

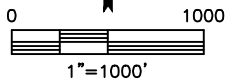
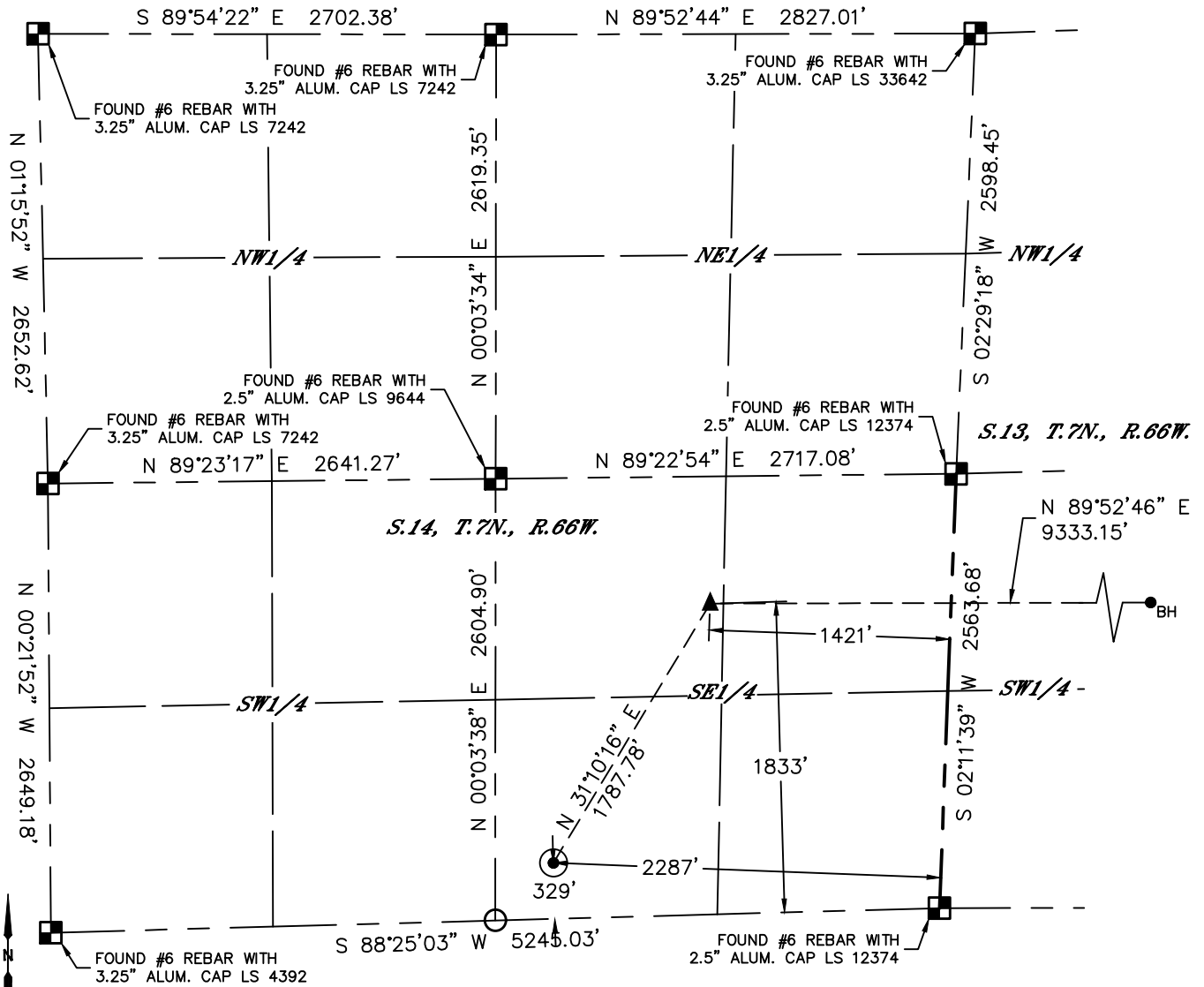


Lat40°, Inc. 6250 W. 10th Street, Unit 2, Greeley, CO 970-515-5294

WELL LOCATION CERTIFICATE

CALIFORNIA 11C

SECTION: 14
TOWNSHIP: 7N
RANGE: 66W
6TH. P.M.
WELD COUNTY, CO



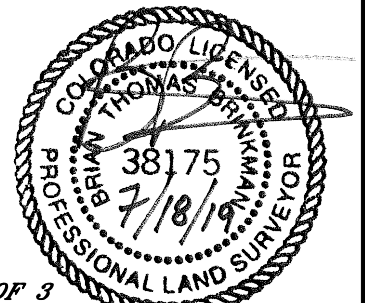
CLIENT: PDC ENERGY, INC.				LANDMAN: MAC NEUMANN				
INSTRUMENT OPERATOR: JAKE STILLE				SURVEY DATE: 10/5/2018		SURFACE USE: CROPLAND		
SHL FOOTAGE			SHL LAT °	SHL LONG °	SHL PDOP	SHL ELEV (FT.)	SHL 1/4/1/4	SHL S-T-R
329	FSL	2287	FEL	40.56904	-104.74353	1.5	4899	SWSE 14-7-66

BHL FOOTAGE			BHL LAT °	BHL LONG °	BHL S-T-R	EP LAT °	EP LONG °	EP S-T-R
1833	FSL	2580	FWL	40.57304	-104.70656	18-7-65	40.57321	-104.74015 14-7-66

- LEGEND
- = ALIQUOT MONUMENT AS DESCRIBED
 - = CALCULATED POSITION
 - = SURFACE HOLE LOCATION (SHL)
 - = ENTRY POINT LOCATION (EP)
 - = BOTTOM HOLE LOCATION (BHL)
 - = EXISTING WELL
 - = ABANDONED WELL

NOTE:

- 1) Bearings shown are Grid Bearings of the Colorado State Plane Coordinate System, North Zone, North American Datum 1983. The lineal dimensions as contained herein are based upon the "U.S. Survey Foot."
- 2) Distances to section lines measured at 90 degrees from said section lines.
- 3) Ground elevations are based on an observed GPS elevation (NAVD 1988 DATUM).
- 4) Latitude and Longitude shown are (NAD 83 DATUM).
- 5) IMPROVEMENTS: See LOCATION DRAWING for all visible improvements within 500' of oil and gas location.
- 6) This map does not represent a boundary survey.



SHEET 1 OF 3

Brian T. Brinkman—On behalf of Lat40, Inc.
Colorado Licensed Professional DATE: 7/18/2019
Land Surveyor No. 38175 PROJECT#: 2018155-01

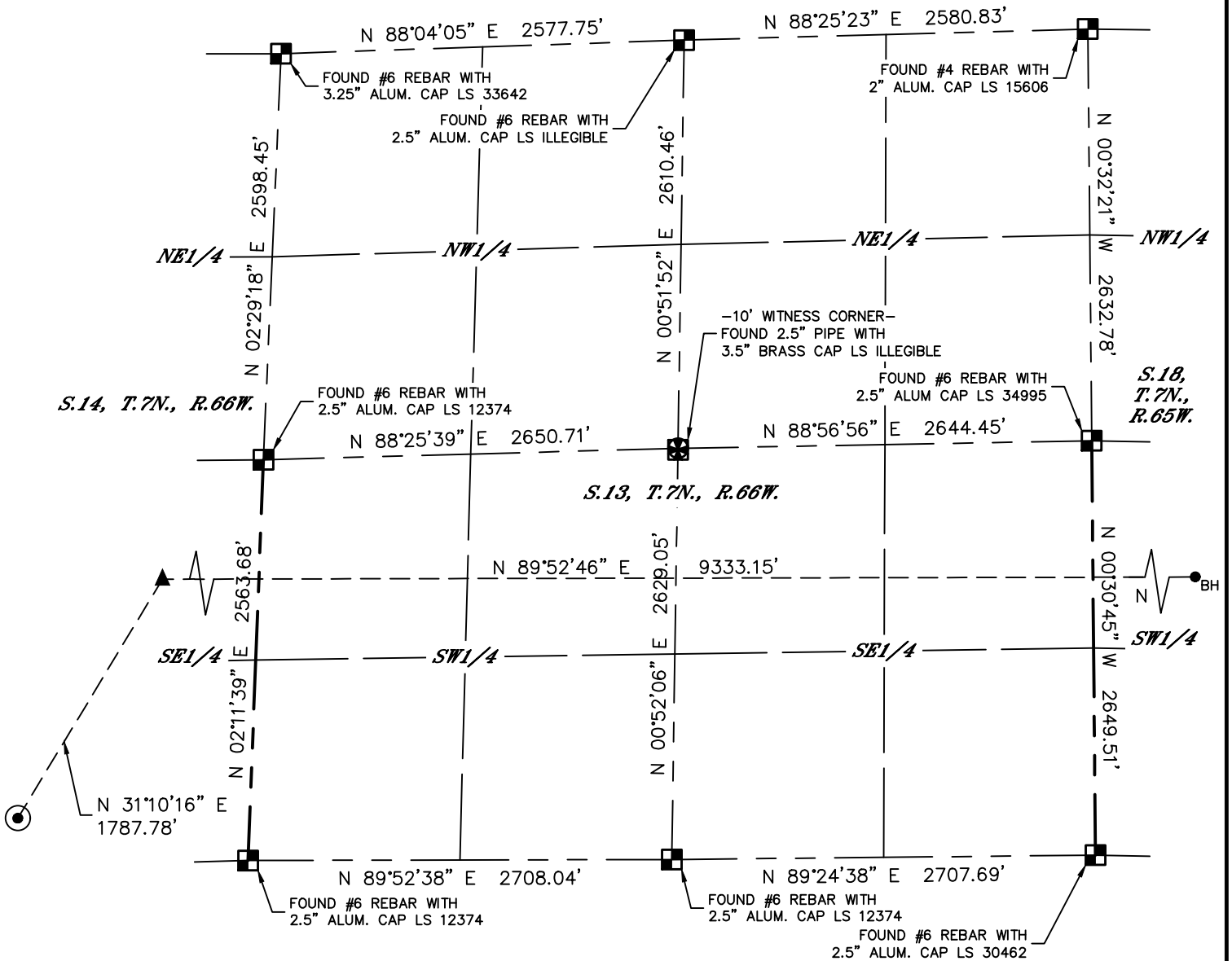


Lat40°, Inc. 6250 W. 10th Street, Unit 2, Greeley, CO 970-515-5294

WELL LOCATION CERTIFICATE

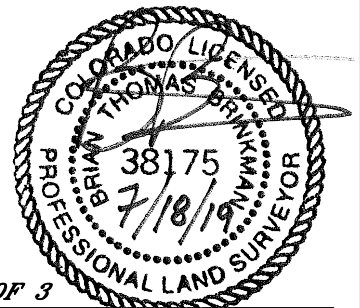
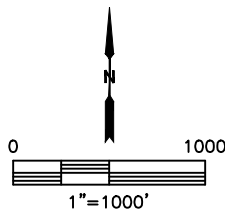
CALIFORNIA 11C

SECTION: 14
TOWNSHIP: 7N
RANGE: 66W
6TH. P.M.
WELD COUNTY, CO



LEGEND

- = ALIQUOT MONUMENT AS DESCRIBED
- = CALCULATED POSITION
- = SURFACE HOLE LOCATION (SHL)
- = ENTRY POINT LOCATION (EP)
- = BOTTOM HOLE LOCATION (BHL)
- = EXISTING WELL
- = ABANDONED WELL



SHEET 2 OF 3

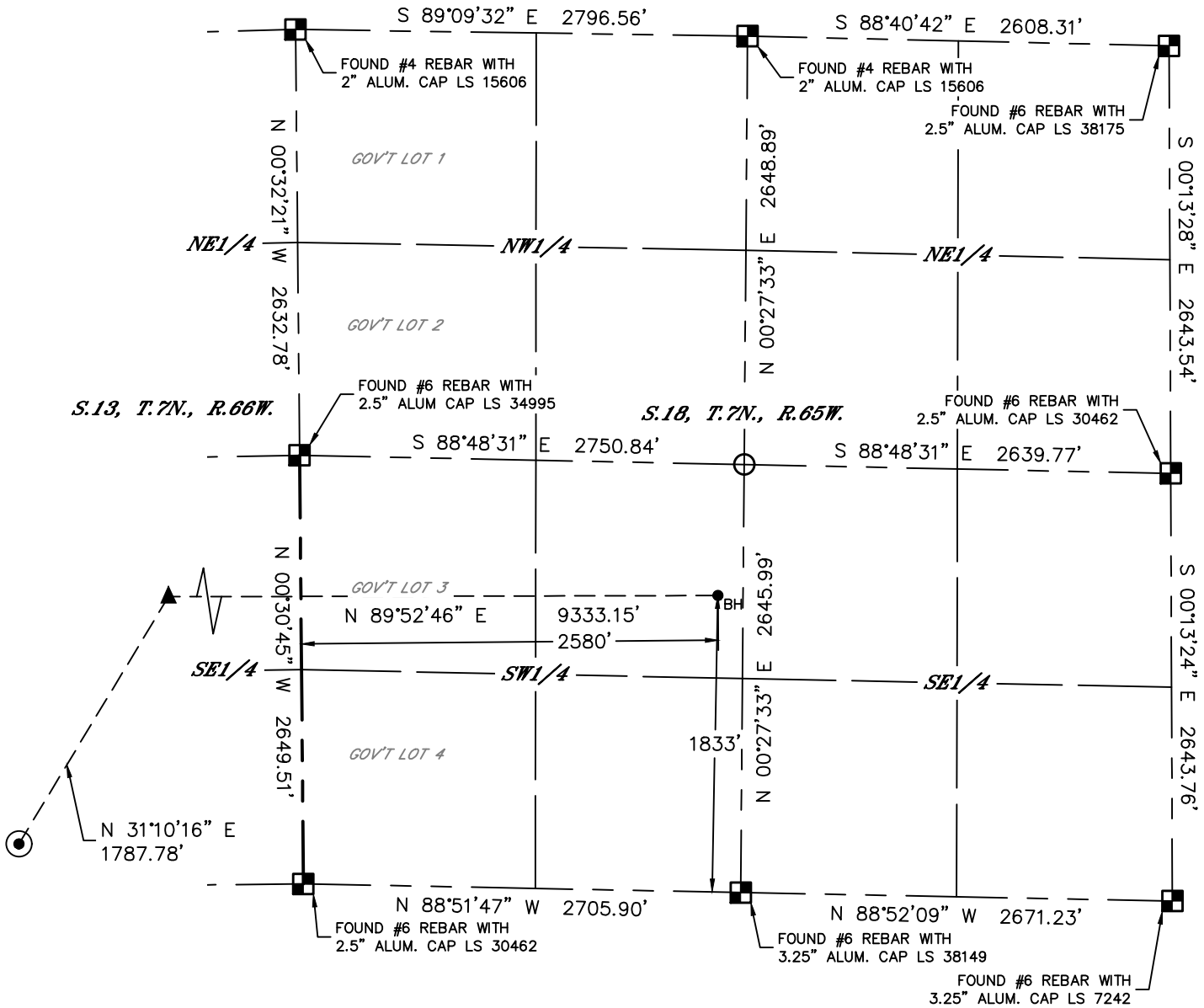
Brian T. Brinkman—On behalf of Lat40°, Inc.
Colorado Licensed Professional DATE: 7/18/2019
Land Surveyor No. 38175 PROJECT#: 2018155-01



WELL LOCATION CERTIFICATE

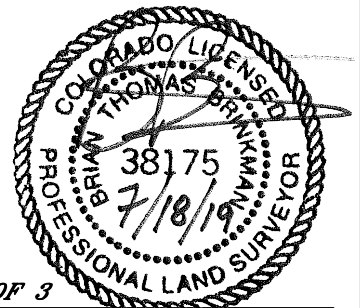
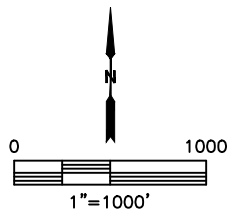
CALIFORNIA 11C

SECTION: 14
TOWNSHIP: 7N
RANGE: 66W
6TH. P.M.
WELD COUNTY, CO



LEGEND

- = ALIQUOT MONUMENT AS DESCRIBED
- = CALCULATED POSITION
- = SURFACE HOLE LOCATION (SHL)
- = ENTRY POINT LOCATION (EP)
- = BOTTOM HOLE LOCATION (BHL)
- = EXISTING WELL
- = ABANDONED WELL



SHEET 3 OF 3

Brian T. Brinkman—On behalf of Lat40°, Inc.
Colorado Licensed Professional DATE: 7/18/2019
Land Surveyor No. 38175 PROJECT#: 2018155-01