

Inspection Photos

5/07/2020

Operator: CAERUS PICEANCE LLC # 10456

Location ID: 335618

Garfield County, CO

Aaron Trujillo

NW Reclamation Specialist

COGCC

Inspection Photos
Operator Name: CAERUS PICEANCE LLC # 10456
Location ID: 335618



Photo 1: Photo taken south end of the Location, facing west. Photo 1-4 provide an overview of the Location and current interim areas from west, northwest, northeast to east.



Photo 2: See comments under photo 1.

Inspection Photos
Operator Name: CAERUS PICEANCE LLC # 10456
Location ID: 335618

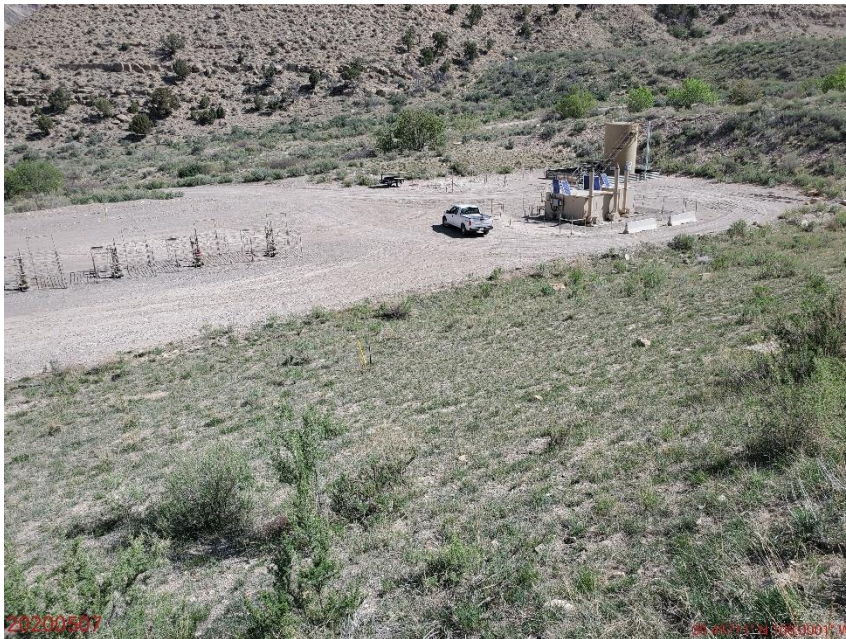


Photo 3: See comments under photo 1.



Photo 4: See comments under photo 1.

Inspection Photos
Operator Name: CAERUS PICEANCE LLC # 10456
Location ID: 335618



Photo 5: Photo taken from the north end of the Location. Photo shows anchors have been properly marked in accordance with Rule 1003.a



Photo 6: Photo taken from the southwest interim areas. Photo shows what appears to be Carduus nutans rosette. This is a Colorado State Listed Noxious weed and requires management.

Inspection Photos

Operator Name: CAERUS PICEANCE LLC # 10456

Location ID: 335618



Photo 7: Photo taken from the western interim areas. Photo shows what appears to be Carduus nutans rosette. This is a Colorado State Listed Noxious weed and requires management.



Photo 8: Photo taken from the northwest interim areas, facing east. Photo shows overview of the interim areas.

Inspection Photos
Operator Name: CAERUS PICEANCE LLC # 10456
Location ID: 335618



Photo 9: Photo taken from the northwest interim areas, facing south. Photo shows overview of the interim areas.



Photo 10: Photo taken from the northwest interim areas. Photo shows sediment trap.

Inspection Photos

Operator Name: CAERUS PICEANCE LLC # 10456

Location ID: 335618



Photo 11: Photo of sediment trap adjacent to the access road northwest of the Location.



Photo 12: Photo taken from the northwest corner of the fill slope/pad. Photo shows rock checks and outlet.

Inspection Photos
Operator Name: CAERUS PICEANCE LLC # 10456
Location ID: 335618



Photo 13: Photo taken from northeast corner of the Location, facing south. Photo provides overview of the Location and interim areas.



Photo 14: Photo taken from northeast corner of the Location, facing southwest. Photo provides overview of the Location and interim areas.

Inspection Photos
Operator Name: CAERUS PICEANCE LLC # 10456
Location ID: 335618



Photo 15: Photo taken from the east end of the Location. Photo shows what appears to be Carduus nutans rosette. This is a Colorado State Listed Noxious weed and requires management.



Photo 16: Photo taken from the east end of the Location. Photo shows what appears to be Carduus nutans rosette. This is a Colorado State Listed Noxious weed and requires management.

Inspection Photos
Operator Name: CAERUS PICEANCE LLC # 10456
Location ID: 335618



Photo 17: Photo taken from the northwest corner of the pad, facing east. Photo shows areas where a tank battery was Located. Facility has since been remove resulting in areas no longer needed for production subject to 1003 interim reclamation. Areas are being proposed for use by Operator to store drill cuttings from the NPR O04 Pad, to eventually be utilized for interim reclamation.



Photo 18: Photo taken from the northwest corner of the pad, facing south. See comments under photo 17

Inspection Photos
Operator Name: CAERUS PICEANCE LLC # 10456
Location ID: 335618



Photo 19: On 5/7/2020, Reclamation Specialist Trujillo utilized a SUA to capture aerial imagery of the Location. Photo shows areas on the west end of the Location where a tank battery existed. Facility has since been removed resulting in areas no longer needed for production subject to 1003 interim reclamation (yellow polygon). Areas are being proposed for use by Operator to store drill cuttings from the NPR 004 Pad, to eventually be utilized for interim reclamation.

Inspection Photos
Operator Name: CAERUS PICEANCE LLC # 10456
Location ID: 335618



Photo 20: On 5/7/2020, Reclamation Specialist Trujillo utilized a SUA to capture aerial imagery of the Location to create a 3-D model of the disturbance area. Model shows overview of the Location, and the topography from the south of the Location, facing North.

Inspection Photos
Operator Name: CAERUS PICEANCE LLC # 10456
Location ID: 335618

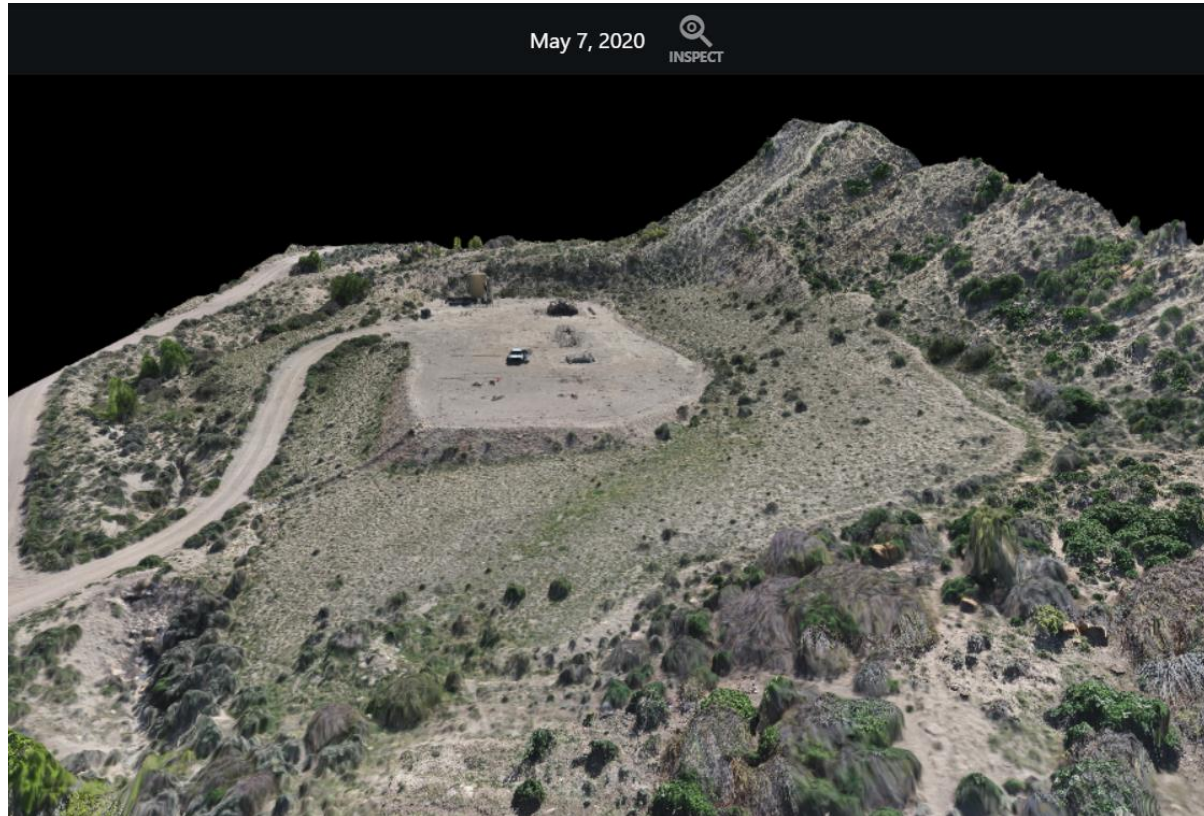


Photo 21: On 5/7/2020, Reclamation Specialist Trujillo utilized a SUA to capture aerial imagery of the Location to create a 3-D model of the disturbance area. Model shows overview of the Location, and the topography from the west of the Location, facing east.

Inspection Photos
Operator Name: CAERUS PICEANCE LLC # 10456
Location ID: 335618

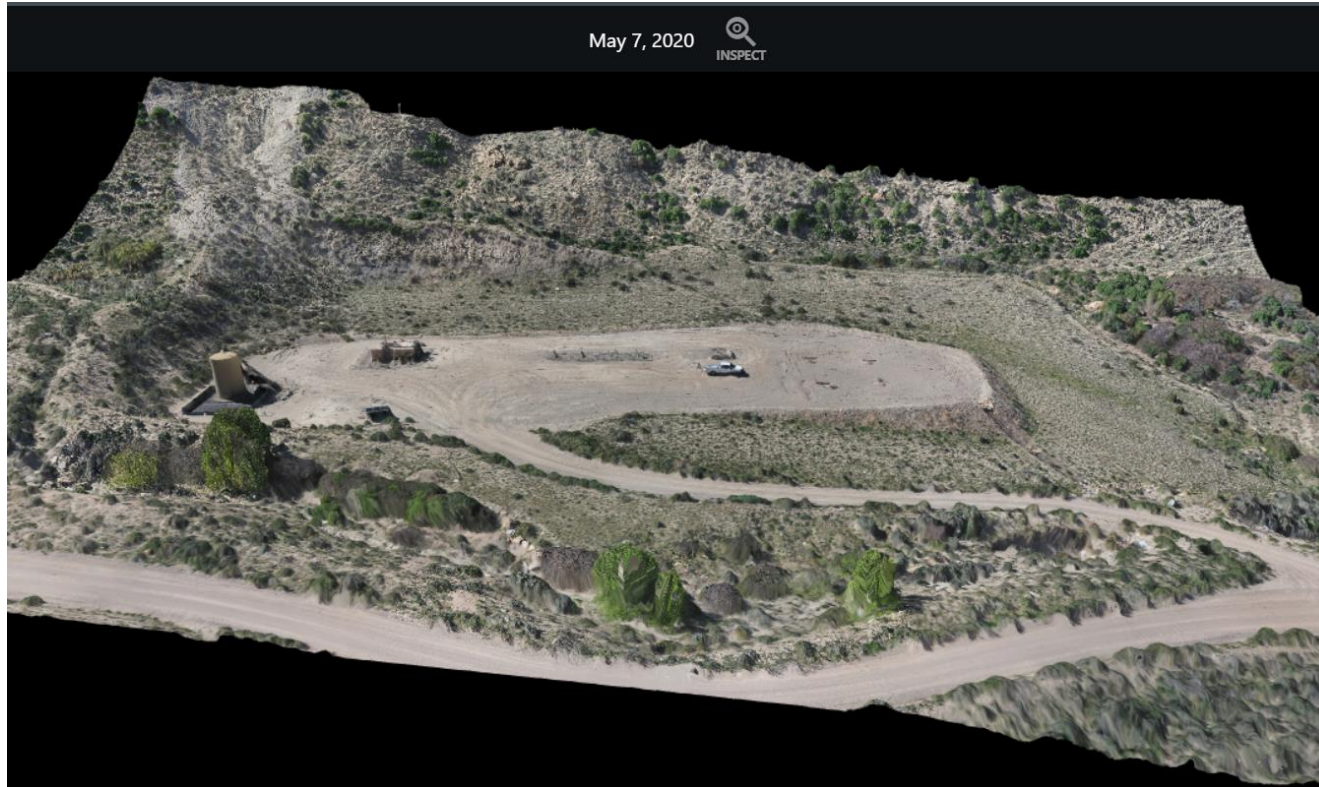


Photo 22: On 5/7/2020, Reclamation Specialist Trujillo utilized a SUA to capture aerial imagery of the Location to create a 3-D model of the disturbance area. Model shows overview of the Location, and the topography from the north of the Location, facing south.

Inspection Photos
Operator Name: CAERUS PICEANCE LLC # 10456
Location ID: 335618

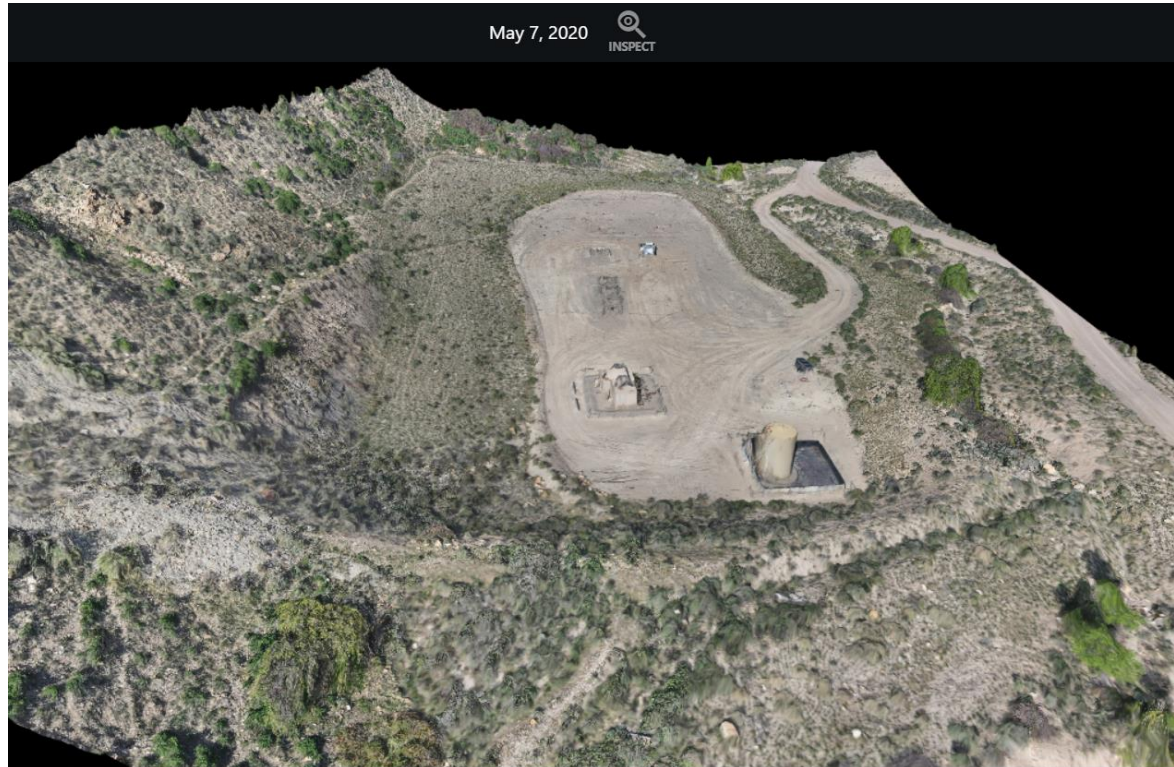


Photo 23: On 5/7/2020, Reclamation Specialist Trujillo utilized a SUA to capture aerial imagery of the Location to create a 3-D model of the disturbance area. Model shows overview of the Location, and the topography from the east of the Location, facing west.