

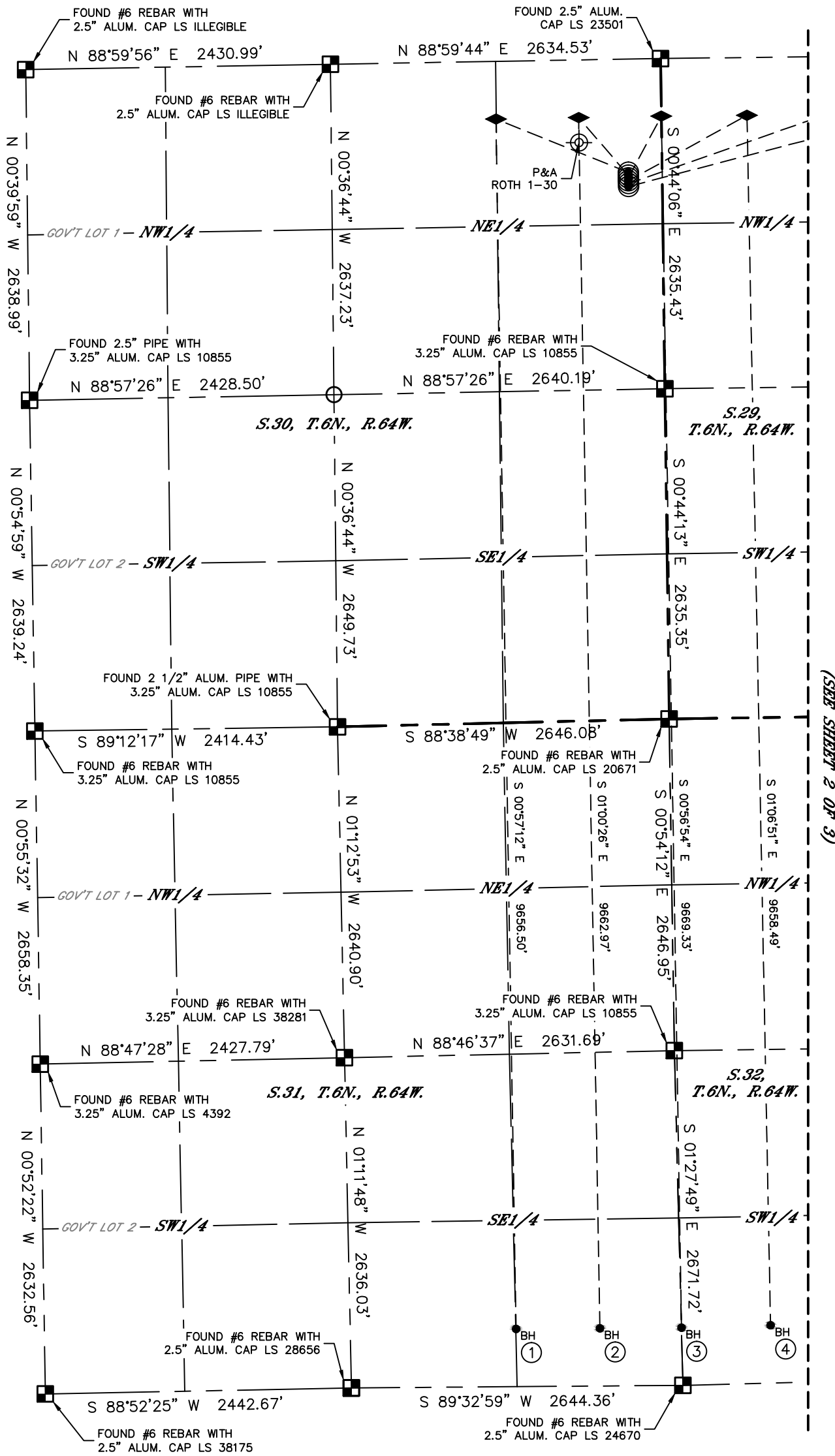


MULTI-WELL PLAN

A30-01 PAD

THIS MAP DOES NOT REPRESENT A BOUNDARY SURVEY

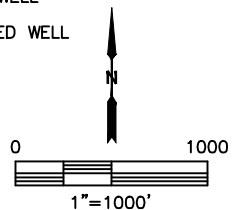
SECTION: 30
TOWNSHIP: 6N
RANGE: 64W
6TH. P.M.
WELD COUNTY, CO



(SEE SHEET 2 OF 3)

#	WELL NAME	BHL FOOTAGE			BHL LAT °	BHL LONG °	BHL S-T-R	
1	ROTH A31-730	460	FSL	1319	FEL	40.43643	-104.58821	31-6-64
2	ROTH A31-720	460	FSL	650	FEL	40.43643	-104.58581	31-6-64
3	ROTH A32-790	460	FSL	0	FWL	40.43642	-104.58348	32-6-64
4	ROTH A32-779	460	FSL	711	FWL	40.43645	-104.58092	32-6-64
5	ROTH A32-770	460	FSL	1327	FWL	40.43648	-104.57871	32-6-64
6	ROTH A32-760	460	FSL	1977	FWL	40.43651	-104.57638	32-6-64

- LEGEND
- = ALIQUOT MONUMENT AS DESCRIBED
 - = CALCULATED POSITION
 - ⊙ = SURFACE HOLE LOCATION (SHL)
 - ◆ = TOP OF PRODUCTION ZONE (TPZ)
 - = BOTTOM HOLE LOCATION (BHL)
 - ⊕ = EXISTING WELL
 - ⊖ = ABANDONED WELL



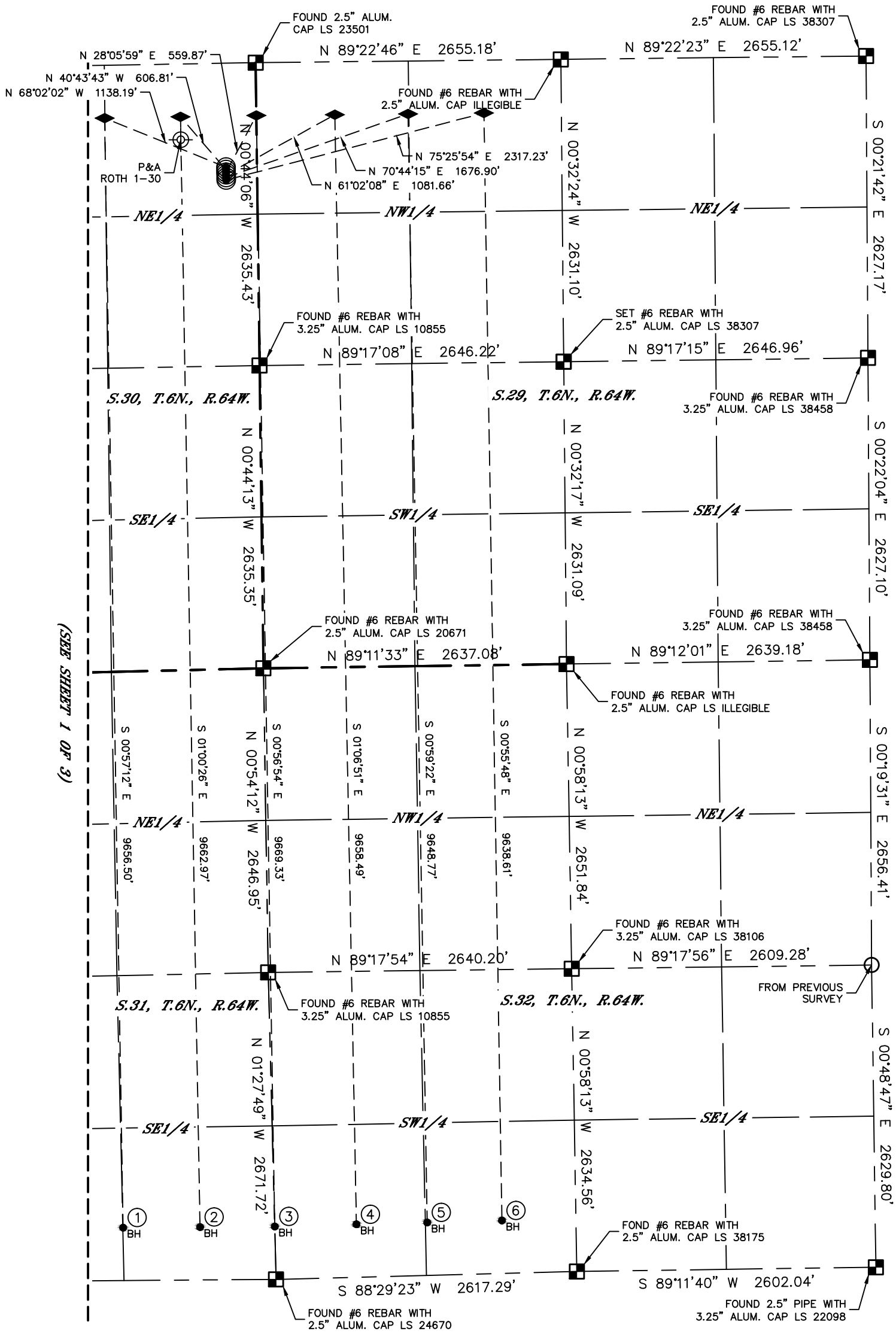


MULTI-WELL PLAN

A30-01 PAD

THIS MAP DOES NOT REPRESENT A BOUNDARY SURVEY

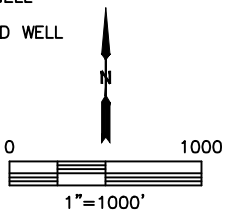
SECTION: 30
TOWNSHIP: 6N
RANGE: 64W
6TH. P.M.
WELD COUNTY, CO



(SEE SHEET 1 OF 3)

#	WELL NAME	BHL FOOTAGE	BHL LAT°	BHL LONG°	BHL S-T-R
1	ROTH A31-730	460 FSL 1319 FEL	40.43643	-104.58821	31-6-64
2	ROTH A31-720	460 FSL 650 FEL	40.43643	-104.58581	31-6-64
3	ROTH A32-790	460 FSL 0 FWL	40.43642	-104.58348	32-6-64
4	ROTH A32-779	460 FSL 711 FWL	40.43645	-104.58092	32-6-64
5	ROTH A32-770	460 FSL 1327 FWL	40.43648	-104.57871	32-6-64
6	ROTH A32-760	460 FSL 1977 FWL	40.43651	-104.57638	32-6-64

- LEGEND
- = ALIQUOT MONUMENT AS DESCRIBED
 - = CALCULATED POSITION
 - ⊙ = SURFACE HOLE LOCATION (SHL)
 - ◆ = TOP OF PRODUCTION ZONE (TPZ)
 - = BOTTOM HOLE LOCATION (BHL)
 - ⊕ = EXISTING WELL
 - ⊖ = ABANDONED WELL



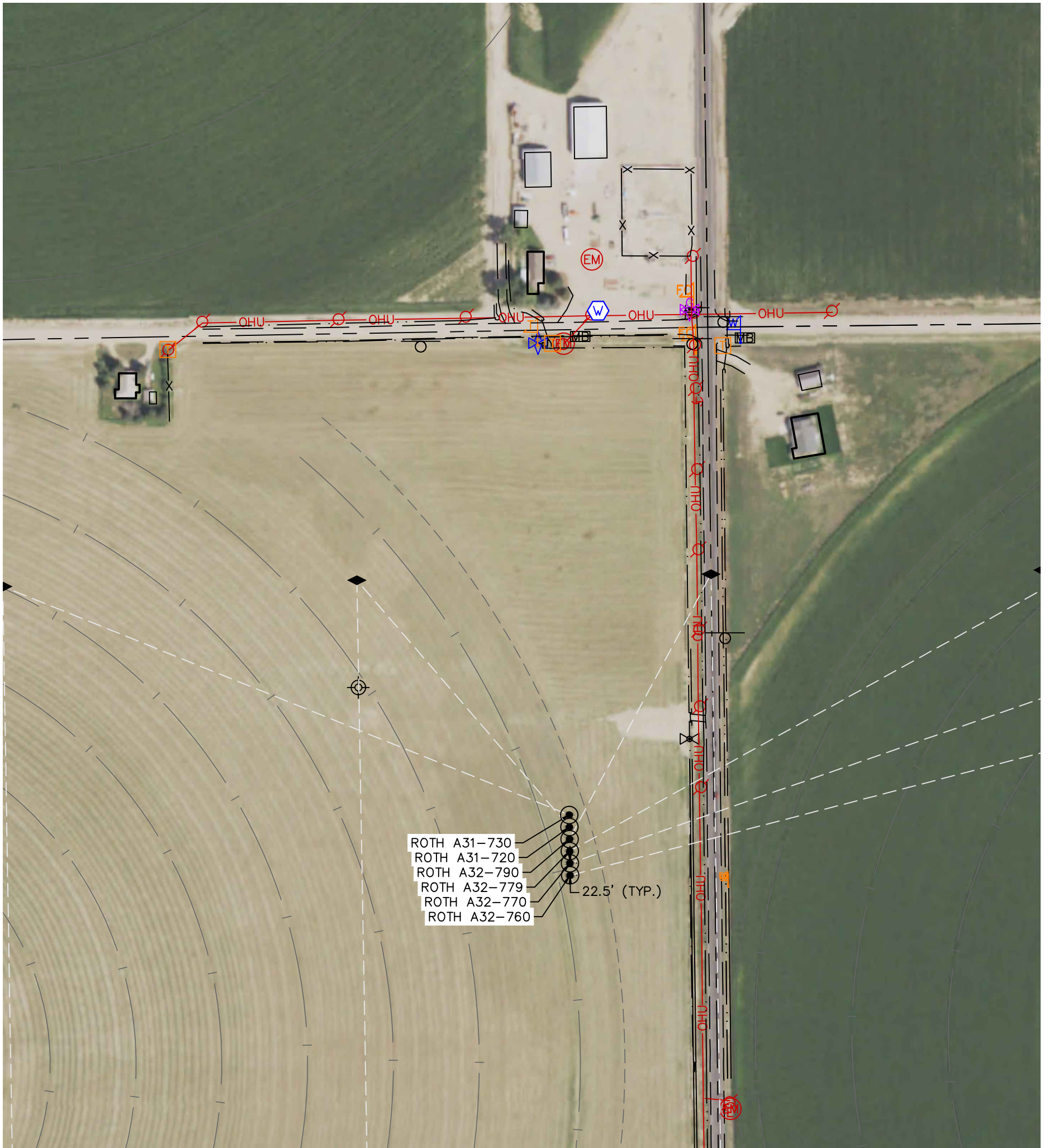


MULTI-WELL PLAN

A30-01 PAD

THIS MAP DOES NOT REPRESENT A BOUNDARY SURVEY

SECTION: 30
TOWNSHIP: 6N
RANGE: 64W
6TH. P.M.
WELD COUNTY, CO



#	WELL NAME	SHL FOOTAGE				SHL LAT °	SHL LONG °	SHL PDOP	SHL ELEV (FT.)	SHL 1/4/1/4	SHL S-T-R
1	ROTH A31-730	904	FNL	270	FEL	40.46173	-104.58466	1.3	4698	NENE	30-6-64
2	ROTH A31-720	927	FNL	270	FEL	40.46167	-104.58466	1.2	4698	NENE	30-6-64
3	ROTH A32-790	949	FNL	270	FEL	40.46161	-104.58466	1.2	4698	NENE	30-6-64
4	ROTH A32-779	972	FNL	270	FEL	40.46155	-104.58466	1.2	4698	NENE	30-6-64
5	ROTH A32-770	994	FNL	270	FEL	40.46149	-104.58466	1.2	4698	NENE	30-6-64
6	ROTH A32-760	1017	FNL	270	FEL	40.46142	-104.58466	1.2	4697	NENE	30-6-64

