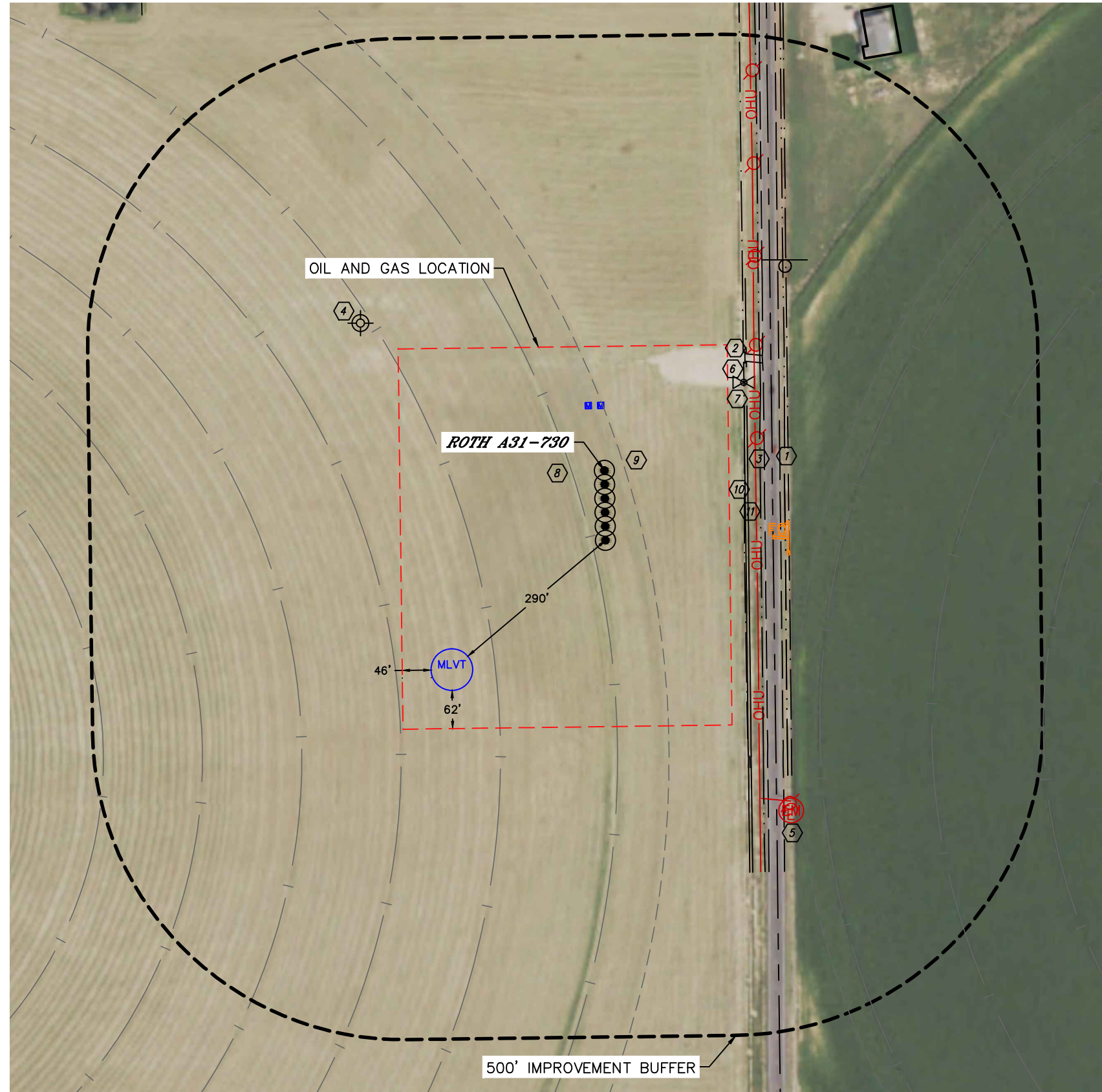


LOCATION DRAWING

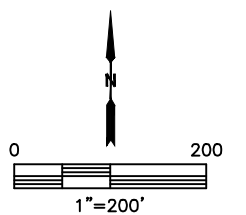
A30-01 PAD



IMPROVEMENTS:
(MEASURED FROM THE PROPOSED ROTH A31-730 WELL LOCATION)

- ⓑ1 NO BUILDING UNITS WITHIN 500' IMPROVEMENT BUFFER
- ⓑ2 NO BUILDINGS WITHIN 500' IMPROVEMENT BUFFER
- ① COUNTY ROAD 51 257' E
- ② ROAD 286' NE
- ③ OVERHEAD UTILITY 243' E, 586' SE
- ④ EXISTING WELL (P&A) ±459' NW
- ⑤ ELECTRIC METER/SERVICE 625' SE
- ⑥ PIPE 283' & 284' NE, 516' & 524' SE
- ⑦ IRRIGATION VALVE 265' NE
- ⑧ IRRIGATION PIVOT TRACK 51', 239', 399', 559', 719' & 879' SW, 359', 398' & 578' NE
- ⑨ IRRIGATION END GUN 32' NE, 359' SE
- ⑩ DITCH 225' & 296' E,
- ⑪ BORROW DITCH 251' & 289' E

NEAREST CULTURAL ITEMS			
MEASURED FROM THE NEAREST	PROPOSED WELL HEAD	EDGE OF PRODUCTION EQUIPMENT	EDGE OF TEMPORARY MLVT
BUILDING	±902' NE	±808' NE	±1173' NW
BUILDING UNIT	±785' NE	±695' NE	±1155' NE
HIGH OCCUPANCY BUILDING UNIT	5280'+	5280'+	5280'+
SCHOOL FACILITY	5280'+	5280'+	5280'+
SCHOOL PROPERTY LINE	5280'+	5280'+	5280'+
CHILD CARE CENTER	5280'+	5280'+	5280'+
DESIGNATED OUTSIDE ACTIVITY AREA	5280'+	5280'+	5280'+
PUBLIC ROAD (COUNTY ROAD 51)	±257' E	±258' E	±474' E
ABOVE GROUND UTILITY	±243' E	±243' E	±460' E
RAILROAD	5280'+	5280'+	5280'+
PROPERTY LINE	±270' E	±270' E	±486' E



LEGEND

	- SURFACE HOLE LOCATION
	- OIL & GAS LOCATION
	- PROPOSED ø67' MLVT
	- PROPOSED GAS LIFT METER BUILDING