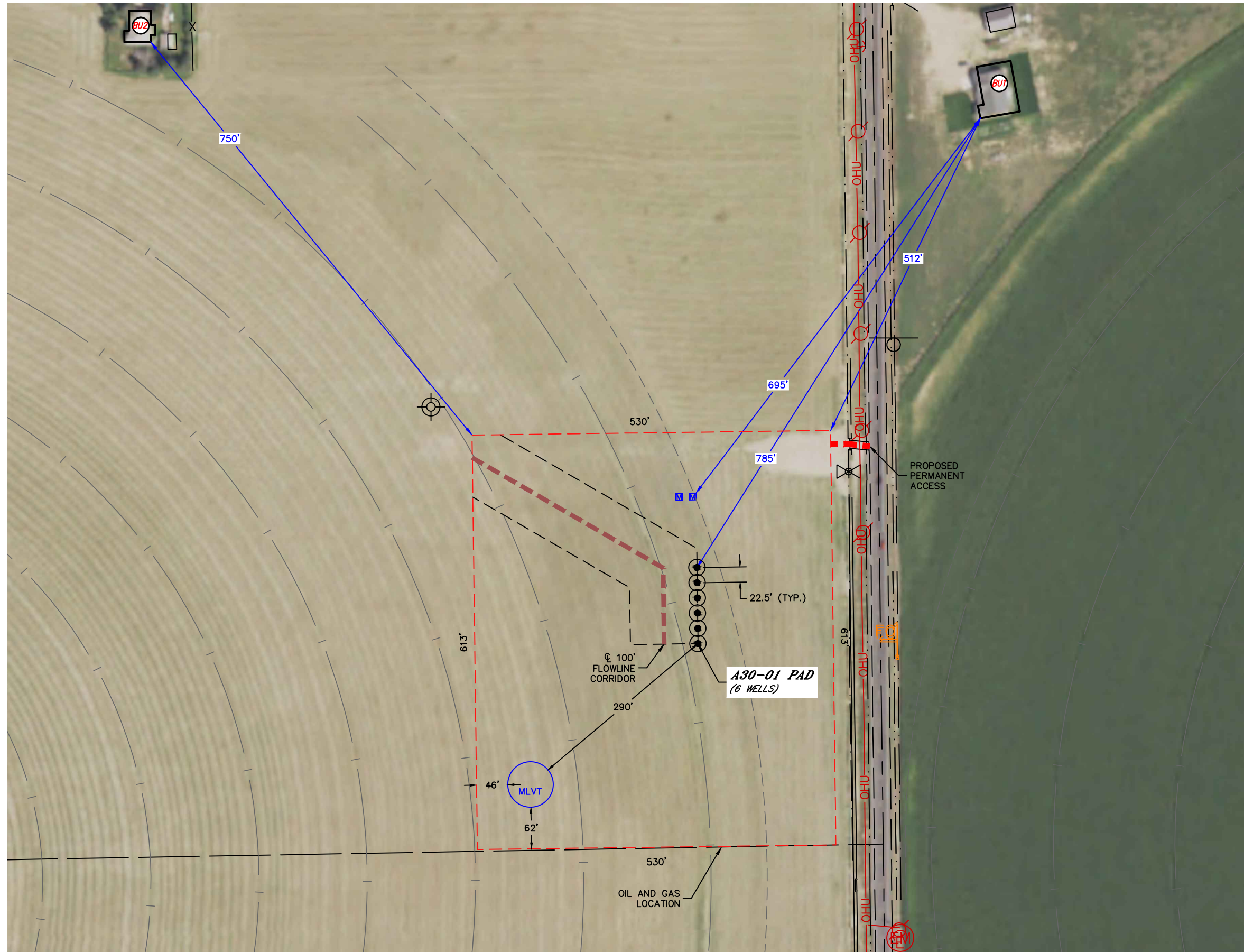









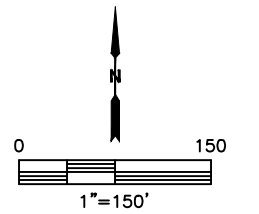
Lat40°, Inc. 6250 W. 10th Street, Unit 2, Greeley, CO 970-515-5294  
**PROPOSED SCALED FACILITY DRAWING**  
 A30-01 PAD

SECTION: 30  
 TOWNSHIP: 6N  
 RANGE: 64W  
 6TH. P.M.  
 WELD COUNTY, CO



LEGEND

-  - SURFACE HOLE LOCATION
-  - OIL & GAS LOCATION
-  - PROPOSED 67" MLVT
-  - PROPOSED GAS LIFT METER BUILDING
-  - BUILDING UNIT



DATE: 3/4/2020  
 PROJECT#: 2018024