



Lat40°, Inc. 6250 W. 10th Street, Unit 2, Greeley, CO 970-515-5294

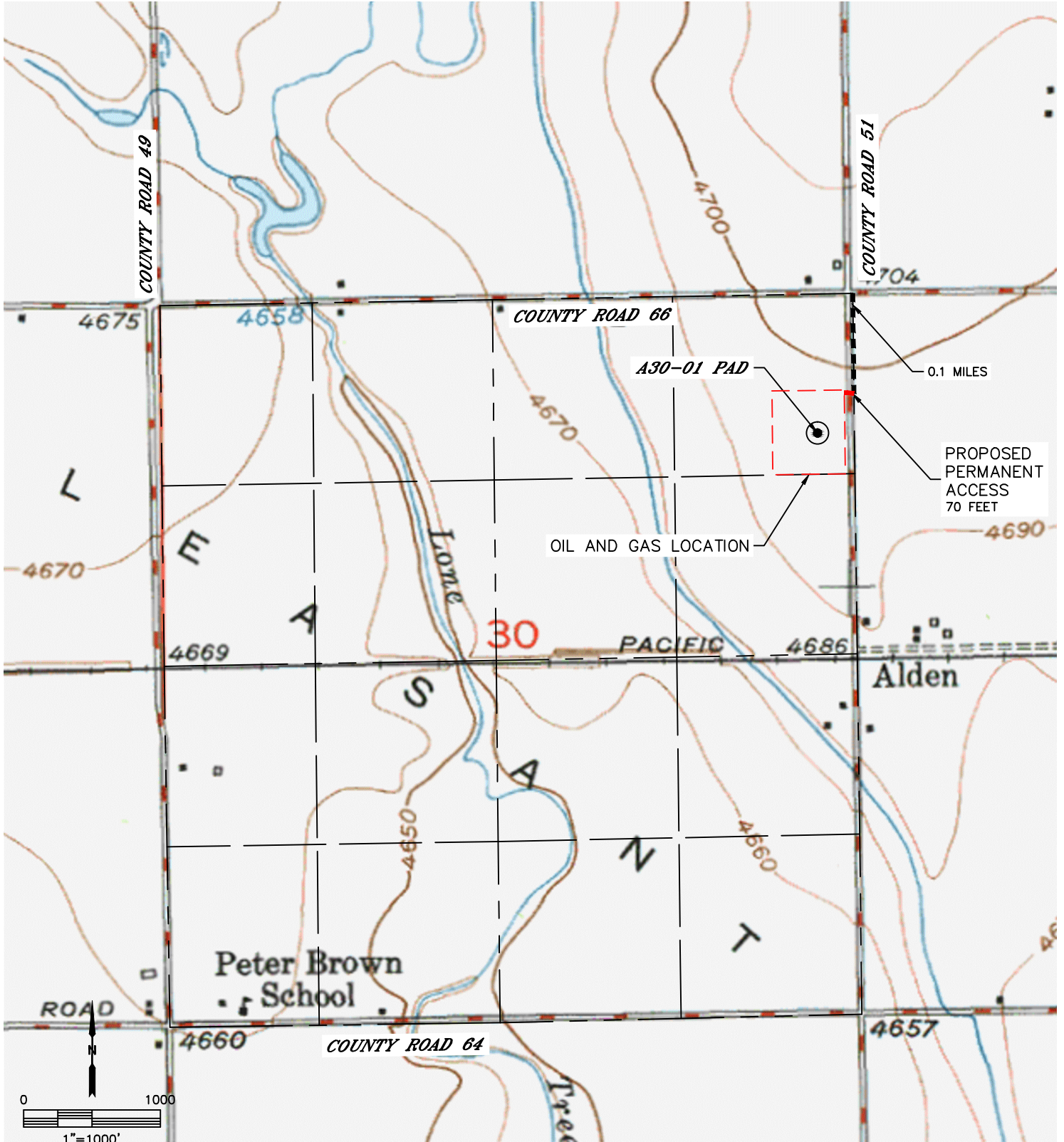
ACCESS ROAD MAP

A30-01 PAD

SECTION: 30
TOWNSHIP: 6N
RANGE: 64W
6TH. P.M.
WELD COUNTY, CO

DIRECTIONS TO THE A30-01 PAD:

FROM THE INTERSECTION OF COUNTY ROAD 66 AND COUNTY ROAD 51 DRIVE SOUTH ON COUNTY ROAD 51 FOR 0.1 MILES TO A PROPOSED ACCESS ON THE WEST. TURN WEST ONTO PROPOSED ACCESS AND DRIVE 70 FEET TO THE PROPOSED OIL AND GAS LOCATION.





Lat40°, Inc. 6250 W. 10th Street, Unit 2, Greeley, CO 970-515-5294

ACCESS ROAD MAP

A30-01 PAD

SECTION: 30
TOWNSHIP: 6N
RANGE: 64W
6TH. P.M.
WELD COUNTY, CO

