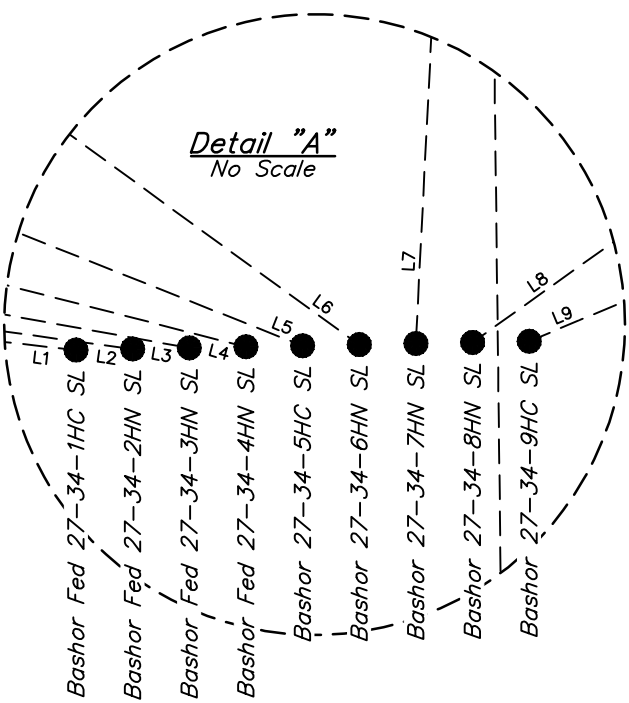
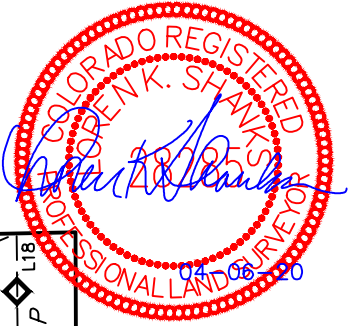
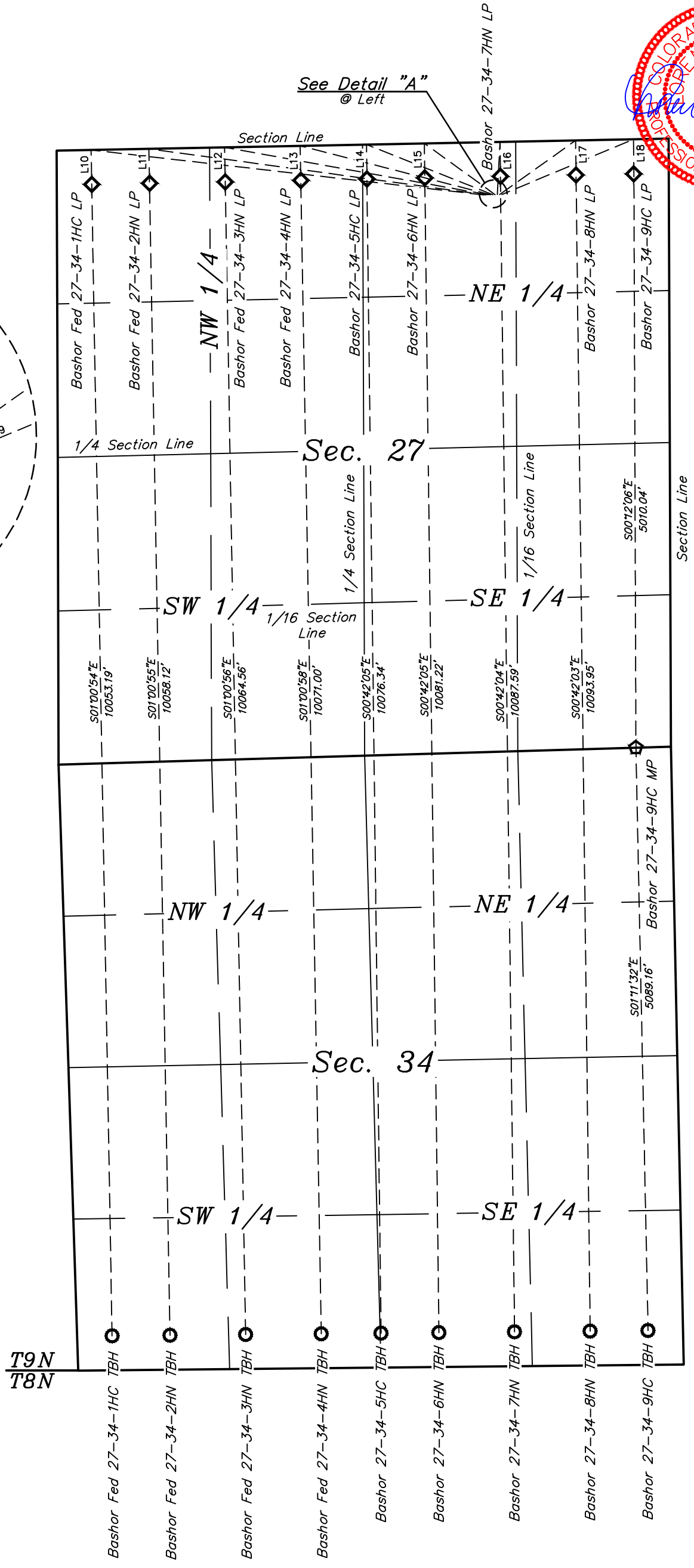


- LEGEND:**
- = SURFACE LOCATION.
 - ◆ = LANDING POINT.
 - = MID-POINT.
 - = TARGET BOTTOM HOLE.
 - SL = SURFACE LOCATION.
 - LP = LANDING POINT.
 - MP = MID-POINT.
 - TBH = TARGET BOTTOM HOLE.



LINE TABLE		
LINE	DIRECTION	LENGTH
L1	N83°28'12"W	3447.57'
L2	N82°13'19"W	2967.53'
L3	N79°47'31"W	2337.27'
L4	N75°34'59"W	1714.30'
L5	N68°19'31"W	1185.42'
L6	N54°02'28"W	761.81'
L7	N02°54'14"E	460.49'
L8	N54°32'18"E	814.35'
L9	N67°13'50"E	1245.31'
L10	S01°00'54"E	300.00'
L11	S01°00'55"E	300.00'
L12	S01°00'56"E	300.00'
L13	S01°00'58"E	300.00'
L14	S00°42'05"E	300.01'
L15	S00°42'05"E	300.01'
L16	S00°42'04"E	300.01'
L17	S00°42'03"E	300.01'
L18	S00°42'03"E	300.01'



REV: 2 04-06-20 C.IVIE (ADD MID-POINT)

MALLARD EXPLORATION

BASHOR 9-60 27B PAD
 NW 1/4 NE 1/4, SECTION 27, T9N, R60W, 6th P.M.
 WELD COUNTY, COLORADO

SURVEYED BY	GREG WEIMER, N.W.	02-07-20	SCALE
DRAWN BY	C.C.	06-28-17	1" = 1000'

MULTI-WELL PLAN

FIGURE #5



UELS, LLC
 Corporate Office * 85 South 200 East
 Vernal, UT 84078 * (435) 789-1017