

PROCEED IN A NORTHERLY DIRECTION FROM KEOTA, COLORADO ALONG COUNTY ROAD 105 APPROXIMATELY 2.1 MILES TO THE BEGINNING OF THE PROPOSED ACCESS ROAD TO THE WEST; FOLLOW ROAD FLAGS IN A WESTERLY DIRECTION APPROXIMATELY 1,302' TO THE PROPOSED LOCATION.

TOTAL DISTANCE FROM KEOTA, COLORADO TO THE PROPOSED WELL LOCATION IS APPROXIMATELY 2.3 MILES.

REV: 1 03-24-20 C.IVIE (COMPANY NAME CHANGE)

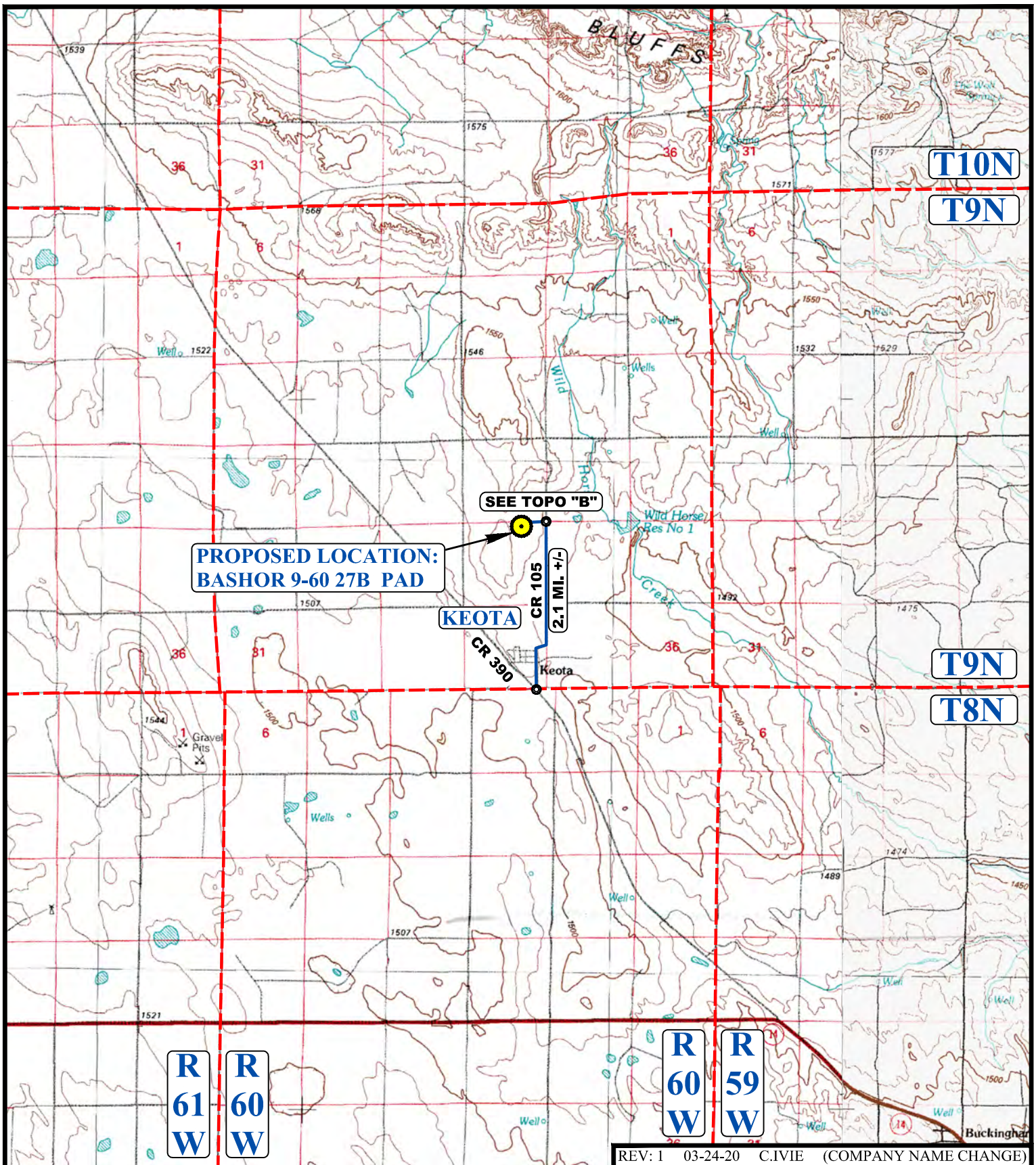
MALLARD EXPLORATION

BASHOR 9-60 27B PAD
NW 1/4 NE 1/4, SECTION 27, T9N, R60W, 6th P.M.
WELD COUNTY, COLORADO

SURVEYED BY	G.W., N.W.	02-07-20	
DRAWN BY	Z.T.	07-03-17	
ROAD DESCRIPTION			



UELS, LLC
Corporate Office * 85 South 200 East
Vernal, UT 84078 * (435) 789-1017



LEGEND:

 PROPOSED LOCATION



UELS, LLC
 Corporate Office * 85 South 200 East
 Vernal, UT 84078 * (435) 789-1017

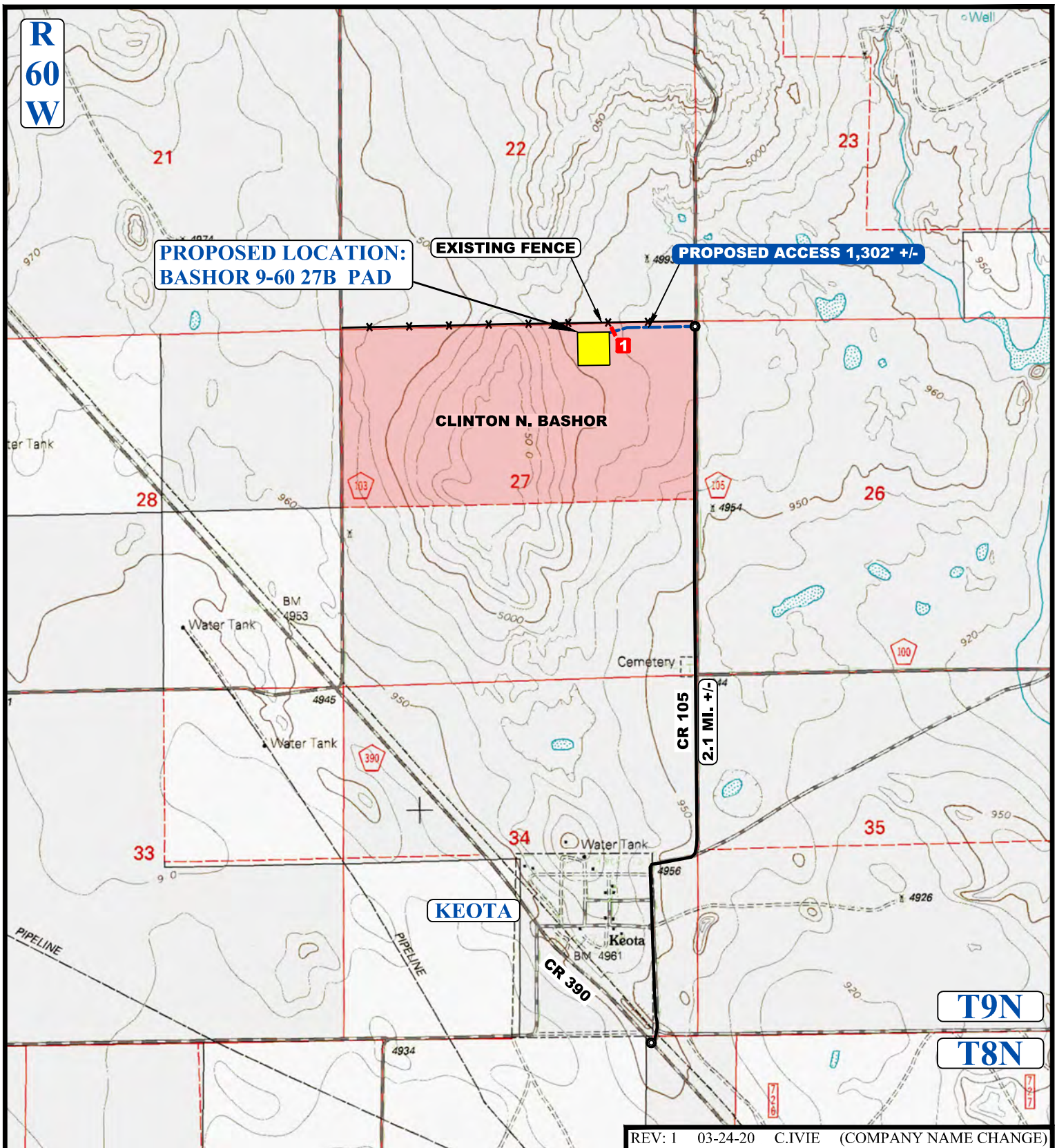


MALLARD EXPLORATION

BASHOR 9-60 27B PAD
 NW 1/4 NE 1/4, SECTION 27, T9N, R60W, 6th P.M.
 WELD COUNTY, COLORADO

SURVEYED BY	G.W., N.W.	02-07-20	SCALE
DRAWN BY	Z.T.	07-03-17	1 : 100,000
ACCESS ROAD MAP			TOPO A

REV: 1 03-24-20 C.IVIE (COMPANY NAME CHANGE)



REV: 1 03-24-20 C.IVIE (COMPANY NAME CHANGE)

NOTE: PARCEL DATA SHOWN HAS BEEN OBTAINED FROM VARIOUS SOURCES AND SHOULD BE USED FOR MAPPING, GRAPHIC AND PLANNING PURPOSES ONLY. NO WARRANTY IS MADE BY UINTAH ENGINEERING AND LAND SURVEYING (UELS) FOR ACCURACY OF THE PARCEL DATA.

LEGEND:

- EXISTING ROAD
- - - PROPOSED ROAD
- * * * EXISTING FENCE
- 1** INSTALL 18" CULVERT



MALLARD EXPLORATION

BASHOR 9-60 27B PAD
NW 1/4 NE 1/4, SECTION 27, T9N, R60W, 6th P.M.
WELD COUNTY, COLORADO

SURVEYED BY	G.W., N.W.	02-07-20	SCALE
DRAWN BY	Z.T.	07-03-17	1 : 24,000
ACCESS ROAD MAP			TOPO B



UELS, LLC
Corporate Office * 85 South 200 East
Vernal, UT 84078 * (435) 789-1017