

# HALLIBURTON

iCem<sup>®</sup> Service

## **TERRA ENERGY PARTNERS-EBUS**

Rock Springs District, COLORADO

### **For: H&P 318**

Date: Sunday, February 02, 2020

### **FEDERAL RWF 312-12 Production**

GARFIELD, CO

API# 05-045-24275

Job Date: Sunday, February 02, 2020

Sincerely,

**Rock Springs, WY**

## Legal Notice

---

### Disclaimer:

All information in this report is provided subject to the terms and conditions which govern the services provided by Halliburton. Halliburton personnel use their best efforts in gathering information and their best judgment in interpreting it, but any interpretation, research, analysis or recommendation furnished by Halliburton are opinions based upon inferences from measurements and empirical relationships and assumptions, which inferences and empirical relationships and assumptions are not infallible, and with respect to which professionals in the industry may differ. iCem 3D Displacement results are used to understand how fluids intermix during a cement job. Simulation and 3D displacement results are not intended as and should not be used as a replacement for bond logs in determining top of cement. Current 3D model calculations are known to model more volume than the input volume for standard cases due to known calculation improvements required. For rotational cases, the modeled volume will be impacted by the same calculations impacting the standard cases, as well as additional constraints imposed to make the calculation time required operationally feasible. Therefore, until further notice, 3D displacement results should not be used for replacement of a bond log, or used as an identifier of top of cement. HALLIBURTON IS UNABLE TO GUARANTEE THE ACCURACY OF ANY CHART INTERPRETATION, RESEARCH ANALYSIS, OR JOB RECOMMENDATION and any interpretation or recommendation is not for use of or reliance upon by any third party. The customer has full responsibility for any of its decisions which are based on the information provided in this report.

Table of Contents

---

1.0    Cementing Job Summary ..... 4

    1.1    Executive Summary .....4

    1.2    Job Overview .....5

    1.3    Planned Pumping Schedule .....5

    1.4    Water Analysis Report .....6

2.0    Real-Time Job Summary ..... 7

    2.1    Job Event Log .....7

3.0    Attachments..... 9

    3.1    CHART WITHOUT EVENTS.png .....9

    3.2    CHART WITH EVENTS.png .....10

## 1.0 Cementing Job Summary

---

### 1.1 Executive Summary

---

Halliburton appreciates the opportunity to perform the cementing services for this cementing services job. A pre-job safety meeting was held before the job where details of the job were discussed, potential safety hazards were reviewed, and environmental compliance procedures were outlined.

Halliburton maintains a continuous quality improvement process and appreciates any comments or suggestions that you may have. Halliburton again thanks you for the opportunity to perform service work on this well. We hope to be your solutions provider for future projects.

Respectfully,

Halliburton, Rock Springs

**Job Times**

	Date	Time	Time Zone
Called Out	2/1/2020	21:00	MST
On Location	2/2/2020	07:00	MST
Job Started	2/2/2020	19:45	MST
Job Complete	2/2/2020	21:45	MST
Depart Location	2/2/2020	23:00	MST

## 1.2 Job Overview

		Units	Description
1	Surface temperature at time of job	°F	35
2	Mud type (OBM, WBM, SBM, Water, Brine)	lb/gal	WBM
3	Actual mud density	lb/gal	13.5
4	Time circulated before job	HH:MM	2:00
5	Mud volume circulated	Bbls	10
6	Rate at which well was circulated	Bpm	1200
7	Pipe movement during hole circulation	Y/N	Y
8	Rig pressure while circulating	Psi	1100
9	Time from end mud circulation to start of job	HH:MM	00:10
10	Pipe movement during cementing	Y/N	Y
11	Calculated displacement	Bbls	136.2
12	Job displaced by	Rig/HES	HES
13	Annular flow before job	Y/N	N
14	Annular flow after job	Y/N	N
15	Length of rat hole	Ft	6
16	Units of gas detected while circulating	Units	2100
17	Was lost circulation experienced at any time ?	Y/N	N

## 1.3 Planned Pumping Schedule

Description	Stage No.	Density (ppg)	Rate (bbl/min)	Yield (ft <sup>3</sup> /sack)	Water Req. (gal/sack)	Volume (bbl)	Bulk Cement (sacks)	Duration (min)
10 lb/gal Base Production Mud	1	10.00	8.00			0.00		0.00
Water	2	8.33	6.00			10.00		1.67
Mud Flush	3	8.40	6.00			20.00		3.33
ThermaCem TEP Deep Tail (2591582/1)	4	13.30	8.00	1.7943	8.498	388.29	1215.00	48.54
Top Plug/Start Displacement								
Water	5-1	8.33	10.00			120.00		12.00
Water	5-2	8.33	4.00			17.66		4.41
Total:						555.95		69.95

1.4 Water Analysis Report

---

**CEMENT MIX WATER REQUIREMENTS**

Item	Recorded Test Value	Units	Max. Acceptable Limit	Potential Problems in Exceeding Limit
pH	8	----	6.0 - 8.0	Chemicals in the water can cause severe retardation
Chlorides	0	ppm	3000 ppm	Can shorten thickening time of cement
Temperature	70	°F	50-80 °F	High temps will accelerate; Low temps may risk freezing in cold weather

## 2.0 Real-Time Job Summary

## 2.1 Job Event Log

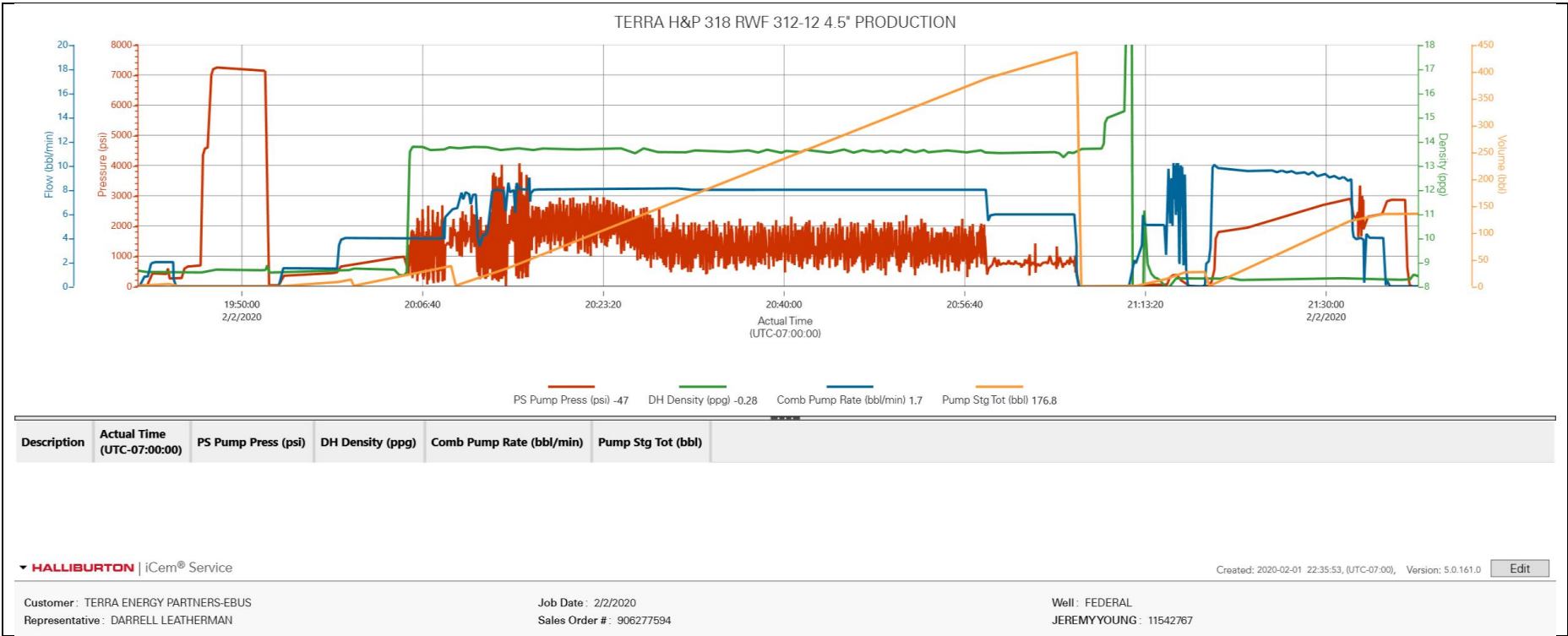
Type	Seq. No.	Graph Label	Date	Time	Source	PS Pump Press (psi)	DH Density (ppg)	Comb Pump Rate (bbl/min)	Pump Stg Tot (bbl)	Comments
Event	1	Call Out	2/1/2020	21:00:00	USER					CALLED OUT FOR TERRA PRODUCTION ON LOCATION AT 7:00
Event	2	Pre-Convoy Safety Meeting	2/1/2020	22:50:00	USER					HALLIBURTON CEMENT CREW DISCUSSED THE HAZARDS OF DRIVING AND THE DIRECTIONS TO LOCATION
Event	3	Crew Leave Yard	2/1/2020	23:00:00	USER					
Event	4	Arrive At Loc	2/2/2020	07:00:00	USER					STILL RUNNING CASING. TD= 8820, TP 883.82' 11.6# P-110. HOLE= 8.75", MUD= 13.5#, SHOE= 29.37'
Event	5	Assessment Of Location Safety Meeting	2/2/2020	07:10:00	USER					HALLIBURTON CEMENT CREW DISCUSSED THE HAZARDS OF THE LOCATION.
Event	6	Pre-Rig Up Safety Meeting	2/2/2020	07:20:00	USER					HALLIBURTON CEMENT CREW DISCUSSED THE HAZARDS OF RIGGING UP THE EQUIPMENT.
Event	7	Rig-Up Equipment	2/2/2020	07:30:00	USER					
Event	8	Pre-Job Safety Meeting	2/2/2020	19:00:00	USER					HALLIBURTON CEMENT CREW, RIG CREW AND COMPANY REP. DISCUSSED THE HAZARDS OF THE JOB AND THE JOB PROCEEDURE.
Event	9	Start Job	2/2/2020	19:40:37	COM4	2.00	8.66	0.00	0.00	
Event	10	Pump Water	2/2/2020	19:41:00	USER	8.00	8.56	0.80	0.20	PUMP 5 BBLS OF WATER TO FILL PUMPS AND LINES.
Event	11	Shutdown	2/2/2020	19:43:38	USER	404.00	8.60	2.00	4.90	
Event	12	Pressure Test	2/2/2020	19:47:36	USER	7244.00	8.69	0.00	0.00	PRESSURE TESTED HES LINES: 500 PSI LOW KICK OUT, 7000 PSI FOR HIGH PRESSURE.
Event	13	Pump Spacer	2/2/2020	19:53:16	USER	50.00	8.56	0.00	0.00	PUMP 10 BBLS OF H2O SPACER
Event	14	Pump Spacer	2/2/2020	20:00:24	USER	713.00	8.74	4.00	1.30	PUMPED 20 BBLS OF MUDFLUSH SPACER AT 8.4 PPG., EST. TOP OF MUDFLUSH AT 1771'
Event	15	Pump THERMACEM Cement	2/2/2020	20:05:33	USER	1134.00	13.79	4.00	21.60	PUMPED 1215 SACKS OF THERMACEM CEMENT AT 13.6 PPG., 1.69 YLD., 7.73 GAL/ SACK. AT 8 BPM. EST. TOP OF CEMENT AT 2136.6'

Event	16	Check Weight	2/2/2020	20:28:52	COM4	788.00	13.60	8.10	148.90	
Event	17	Shutdown	2/2/2020	21:07:00	USER	1.00	13.54	0.00	436.50	
Event	18	Clean Lines	2/2/2020	21:12:04	USER	-52.00	18.52	1.40	0.10	
Event	19	Drop Top Plug	2/2/2020	21:18:29	USER	-35.00	8.33	0.00	26.70	COMPANY REP. WITNESSED THE PLUG DROP
Event	20	Pump Displacement	2/2/2020	21:19:34	USER	483.00	8.35	10.10	2.50	PUMP 136.2 BBLS OF KCL DISPLACEMENT AT 10 BPM SLOWED RATE AT 126 BBLS AWAY TO 4 BPM.
Event	21	Slow Rate	2/2/2020	21:32:00	USER	2864.00	8.30	8.70	120.00	SLOW RATE LAST 10 TO 4 BPM
Event	22	Bump Plug	2/2/2020	21:35:10	USER	2393.00	8.29	4.00	134.20	BUMP PLUG WENT 500 PSI OVER FINAL CIRCULATING PRESSURE.
Event	23	Check Floats	2/2/2020	21:37:14	USER	2871.00	8.27	0.00	135.10	FLOATS HELD WITH 1.5 BBLS BACK TO HALLIBURTON PUMP.
Event	24	End Job	2/2/2020	21:43:59	COM4	-47.00	-0.28	0.00	135.10	FULL RETURNS THROUGHOUT JOB. LEFT CEMENT HEAD ON CASING.
Event	25	Pre-Rig Down Safety Meeting	2/2/2020	21:55:00	USER					HALLIBURTON CEMENT CREW DISCUSSED THE HAZARDS OF RIGGING DOWN THE EQUIPMENT
Event	26	Rig-Down Equipment	2/2/2020	22:00:00	USER					
Event	27	Pre-Convoy Safety Meeting	2/2/2020	22:55:00	USER					HALLIBURTON CEMENT CREW DISCUSSED THE HAZARDS OF DRIVING
Event	28	Crew Leave Location	2/2/2020	23:00:00	USER					
Event	29	Job Complete	2/2/2020	23:00:01	USER					NO ACCIDENTS, NO INCIDENTS. THANKS FROM THE ROCK SPRINGS HALLIBURTON CEMENT CREW



3.0 Attachments

3.1 CHART WITHOUT EVENTS.png



## 3.2 CHART WITH EVENTS.png

