

HALLIBURTON

iCem[®] Service

TERRA ENERGY PARTNERS-EBUS

Rock Springs District, COLORADO

For: H&P 318

Date: Friday, February 21, 2020

FEDERAL RWF 524-1 Surface

API # 05-045-24278

Job Date: Friday, February 21, 2020

Sincerely,

Rock Springs Engineering

Legal Notice

Disclaimer:

All information in this report is provided subject to the terms and conditions which govern the services provided by Halliburton. Halliburton personnel use their best efforts in gathering information and their best judgment in interpreting it, but any interpretation, research, analysis or recommendation furnished by Halliburton are opinions based upon inferences from measurements and empirical relationships and assumptions, which inferences and empirical relationships and assumptions are not infallible, and with respect to which professionals in the industry may differ. iCem 3D Displacement results are used to understand how fluids intermix during a cement job. Simulation and 3D displacement results are not intended as and should not be used as a replacement for bond logs in determining top of cement. Current 3D model calculations are known to model more volume than the input volume for standard cases due to known calculation improvements required. For rotational cases, the modeled volume will be impacted by the same calculations impacting the standard cases, as well as additional constraints imposed to make the calculation time required operationally feasible. Therefore, until further notice, 3D displacement results should not be used for replacement of a bond log, or used as an identifier of top of cement. HALLIBURTON IS UNABLE TO GUARANTEE THE ACCURACY OF ANY CHART INTERPRETATION, RESEARCH ANALYSIS, OR JOB RECOMMENDATION and any interpretation or recommendation is not for use of or reliance upon by any third party. The customer has full responsibility for any of its decisions which are based on the information provided in this report.

Table of Contents

1.0 Cementing Job Summary 4

 1.1 Executive Summary4

 1.2 Job Overview4

 1.3 Planned Pumping Schedule5

 1.4 Water Analysis Report6

2.0 Real-Time Job Summary 7

 2.1 Job Event Log7

3.0 Attachments..... 9

 3.1 CHART WITHOUT EVENTS.png9

 3.2 CHART WITH EVENTS.png10

1.0 Cementing Job Summary

1.1 Executive Summary

Halliburton appreciates the opportunity to perform the cementing services for this cementing services job. A pre-job safety meeting was held before the job where details of the job were discussed, potential safety hazards were reviewed, and environmental compliance procedures were outlined.

Halliburton maintains a continuous quality improvement process and appreciates any comments or suggestions that you may have. Halliburton again thanks you for the opportunity to perform service work on this well. We hope to be your solutions provider for future projects.

Respectfully,

Halliburton, Rock Springs

Job Times

	Date	Time	Time Zone
Called Out	2/20/2020	23:00	MST
On Location	2/21/2020	06:00	MST
Job Started	2/21/2020	07:50	MST
Job Complete	2/21/2020	08:47	MST
Depart Location	2/21/2020	10:00	MST

1.2 Job Overview

		Units	Description
1	Surface temperature at time of job	°F	28
2	Mud type (OBM, WBM, SBM, Water, Brine)	lb/gal	WBM
3	Actual mud density	lb/gal	9.8
4	Time circulated before job	HH:MM	00:30
5	Mud volume circulated	Bbls	300
6	Rate at which well was circulated	Bpm	10
7	Pipe movement during hole circulation	Y/N	N
8	Rig pressure while circulating	Psi	110
9	Time from end mud circulation to start of job	HH:MM	00:10
10	Pipe movement during cementing	Y/N	N
11	Calculated displacement	Bbls	77.5
12	Job displaced by	Rig/HES	HES
13	Annular flow before job	Y/N	N
14	Annular flow after job	Y/N	N
15	Length of rat hole	Ft	7
16	Units of gas detected while circulating	Units	0
17	Was lost circulation experienced at any time ?	Y/N	N

1.3 Planned Pumping Schedule

Description	Stage No.	Density (ppg)	Rate (bbl/min)	Yield (ft ³ /sack)	Water Req. (gal/sack)	Volume (bbl)	Bulk Cement (sacks)	Duration (min)
TEP Surface Mud	1	8.40	4.00			0.00		0.00
Fresh Water Spacer	2	8.33	8.00			20.00		2.50
VariCem GJ1 Lead Q3 2018 2500622/1	3	12.30	8.00	2.3787	13.772	52.96	125.00	6.62
VariCem GJ1 Tail Q3 2018 2500623/1	4	12.80	8.00	2.1124	11.779	56.44	150.00	7.05
Top Plug/Start Displacement								
Fresh Water Displacement	5-1	8.33	10.00			55.50		5.55
Fresh Water Displacement	5-2	8.33	2.00			20.00		10.00
Total:						204.90		31.72

1.4 Water Analysis Report

CEMENT MIX WATER REQUIREMENTS

Item	Recorded Test Value	Units	Max. Acceptable Limit	Potential Problems in Exceeding Limit
pH	7	----	6.0 - 8.0	Chemicals in the water can cause severe retardation
Chlorides	0	ppm	3000 ppm	Can shorten thickening time of cement
Temperature	72	°F	50-80 °F	High temps will accelerate; Low temps may risk freezing in cold weather

2.0 Real-Time Job Summary

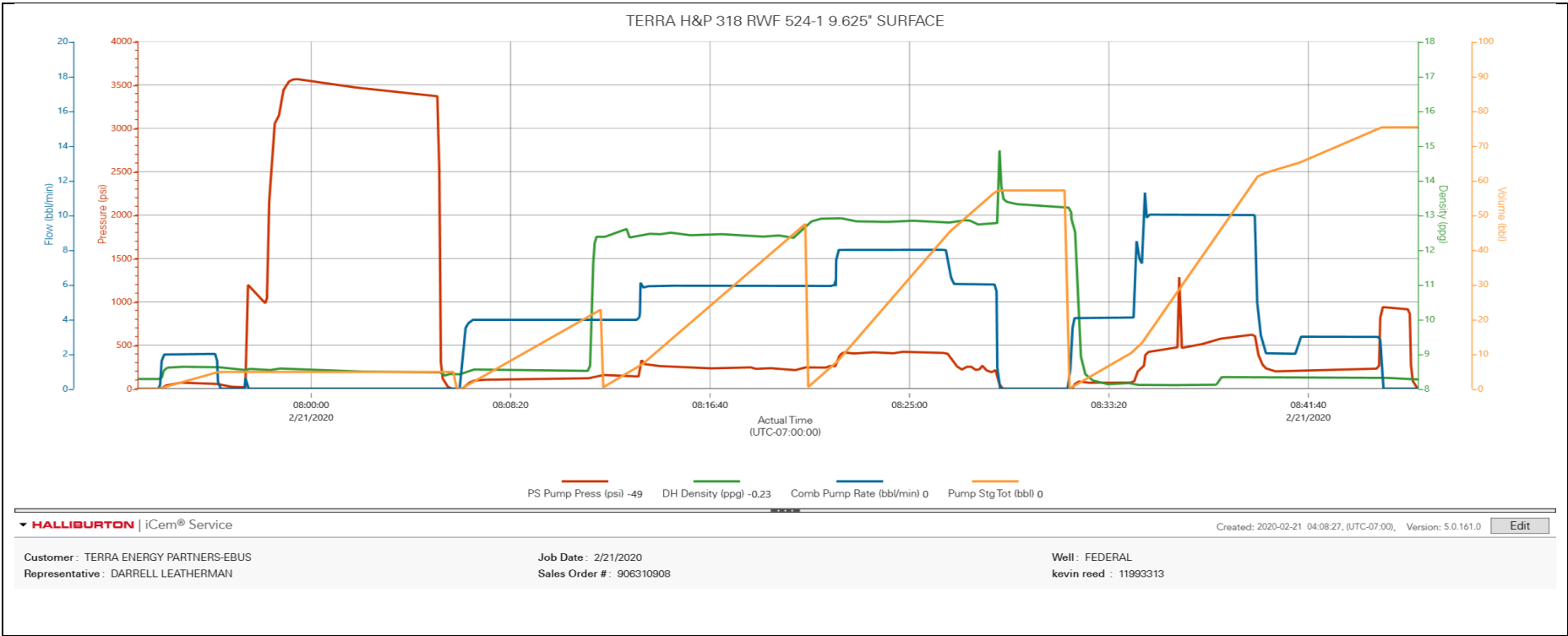
2.1 Job Event Log

Type	Seq. No.	Graph Label	Date	Time	Source	PS Pump Press (psi)	DH Density (ppg)	Comb Pump Rate (bbl/min)	Pump Stg Tot (bbl)	Comments
Event	1	Call Out	2/20/2020	23:00:00	USER					CALLED OUT FOR TERRA SURFACE ON LOCATION AT 06:00
Event	2	Pre-Convoy Safety Meeting	2/21/2020	04:00:00	USER					HALLIBURTON CEMENT CREW DISCUSSED THE HAZARDS OF DRIVING AND THE DIRECTIONS TO LOCATION
Event	3	Crew Leave Staging Area	2/21/2020	04:30:00	USER					
Event	4	Arrive At Loc	2/21/2020	06:00:00	USER					STILL RUNNING CASING. TD= 1052, TP 9.625", 1045.04' 36#. HOLE= 13.5", CENT= 9, MUD= 9.8#, SHOE= 43.13'
Event	5	Assessment Of Location Safety Meeting	2/21/2020	06:10:00	USER					HALLIBURTON CEMENT CREW DISCUSSED THE HAZARDS OF THE LOCATION.
Event	6	Pre-Rig Up Safety Meeting	2/21/2020	06:20:00	USER					HALLIBURTON CEMENT CREW DISCUSSED THE HAZARDS OF RIGGING UP THE EQUIPMENT.
Event	7	Rig-Up Equipment	2/21/2020	06:30:00	USER					
Event	8	Pre-Job Safety Meeting	2/21/2020	07:20:00	USER					HALLIBURTON CEMENT CREW, RIG CREW AND COMPANY REP. DISCUSSED THE HAZARDS OF THE JOB AND THE JOB PROCEEDURE.
Event	9	Start Job	2/21/2020	07:52:54	COM4					
Event	10	Pump Water	2/21/2020	07:53:45	USER	-8.00	8.30	1.60	0.10	PUMP 5 BBLS OF WATER TO FILL PUMPS AND LINES.
Event	11	Shutdown	2/21/2020	07:56:00	USER	57.00	8.62	2.00	4.60	
Event	12	Pressure Test	2/21/2020	07:59:00	USER	3518.00	8.57	0.00	4.80	PRESSURE TESTED HES LINES: 500 PSI LOW KICK OUT, 3500 PSI FOR HIGH PRESSURE.
Event	13	Pump Spacer 1	2/21/2020	08:06:27	USER	31.00	8.47	3.50	0.50	PUMPED 20 BBLS OF H2O AT 4 BPM.
Event	14	Check Weight	2/21/2020	08:12:00	USER	156.00	12.41	4.00	22.40	
Event	15	Pump Lead Cement	2/21/2020	08:12:09	USER	156.00	12.36	4.00	0.20	PUMPED 125 SACKS OF VARICEM LEAD CEMENT AT 12.3 PPG 2.38 YLD., 13.74 GAL/ SACK AT 8 BPM

Event	16	Check Weight	2/21/2020	08:14:34	COM4	259.00	12.45	5.90	11.40	
Event	17	Pump Tail Cement	2/21/2020	08:20:51	USER	244.00	12.80	6.00	1.00	PUMPED 150 SACKS OF VARICEM TAIL CEMENT AT 12.8 PPG 2.11 ft3/sk, 11.74 GAL/ SACK AT 8 BPM. EST. TOP OF TAIL: 435'
Event	18	Check Weight	2/21/2020	08:21:00	USER	248.00	12.85	6.00	1.90	
Event	19	Shutdown	2/21/2020	08:28:34	USER	222.00	12.76	6.00	56.60	
Event	20	Drop Top Plug	2/21/2020	08:31:04	USER	-35.00	13.24	0.00	57.10	COMPANY REP. WITNESSED THE PLUG DROP
Event	21	Pump Displacement	2/21/2020	08:31:52	USER	39.00	12.71	4.10	0.50	PUMP 77.5 BBLS OF H2O DISPLACEMENT AT 10 BPM
Event	22	Slow Rate	2/21/2020	08:39:48	USER	255.00	8.31	2.50	62.00	PUMPED 17.5 BBLS OF H2O AT 2 BPM. FOR A TOTAL OF 77.5 BBLS OF DISPLACEMENT.
Event	23	BUMP PLUG	2/21/2020	08:44:23	USER	251.00	8.29	3.00	74.40	BUMP PLUG AT 251 PSI WENT 500 PSI OVER FINAL CIRCULATING PRESSURE.
Event	24	Check Floats	2/21/2020	08:45:55	USER	704.00	8.29	0.00	75.30	FLOATS HELD WITH .5 BBLS BACK TO HALLIBURTON PUMP.
Event	25	End Job	2/21/2020	08:48:00	USER					FULL RETURNS THROUGHOUT JOB GOT 17 BBLS OF LEAD CEMENT AND 20 BBLS OF SPACER TO SURFACE.
Event	26	Pre-Rig Down Safety Meeting	2/21/2020	08:50:00	USER					HALLIBURTON CEMENT CREW DISCUSSED THE HAZARDS OF RIGGING DOWN THE EQUIPMENT
Event	27	Rig-Down Equipment	2/21/2020	09:00:00	USER					
Event	28	Pre-Convoy Safety Meeting	2/21/2020	09:30:00	USER					HALLIBURTON CEMENT CREW DISCUSSES THE HAZARDS OF DRIVING.
Event	29	Crew Leave Location	2/21/2020	10:00:00	USER					
Event	30	Job Complete	2/21/2020	10:00:01	USER					NO ACCIDENTS, NO INCIDENTS. THANKS FROM THE ROCK SPRINGS HALLIBURTON CEMENT CREW.

3.0 Attachments

3.1 CHART WITHOUT EVENTS.png



3.2 CHART WITH EVENTS.png

