

Ward & Son Alfred, Wright 31-1  
121-07483  
Inspection #688307804  
5/4-5/2020  
Wildlife Mortality/Spill Inspection



Colorado Oil and Gas Conservation Commission  
39.8271, -103.35026, 4852.4ft, 89°  
05/04/2020 12:32:06 PM





Colorado Oil and Gas Conservation Commission

39.82763, -103.35038, 4852.4ft, 15°

05/04/2020 12:33:56 PM



Colorado Oil and Gas Conservation Commission

39.82762, -103.35019, 4914.7ft, 7°

05/04/2020 12:34:19 PM





Colorado Oil and Gas Conservation Commission  
39.8278, -103.3501, 4865.5ft, 263°  
05/04/2020 12:35:29 PM




Colorado Oil and Gas Conservation Commission

39.8279, -103.35013, 4885.2ft, 219°

05/04/2020 12:35:02 PM



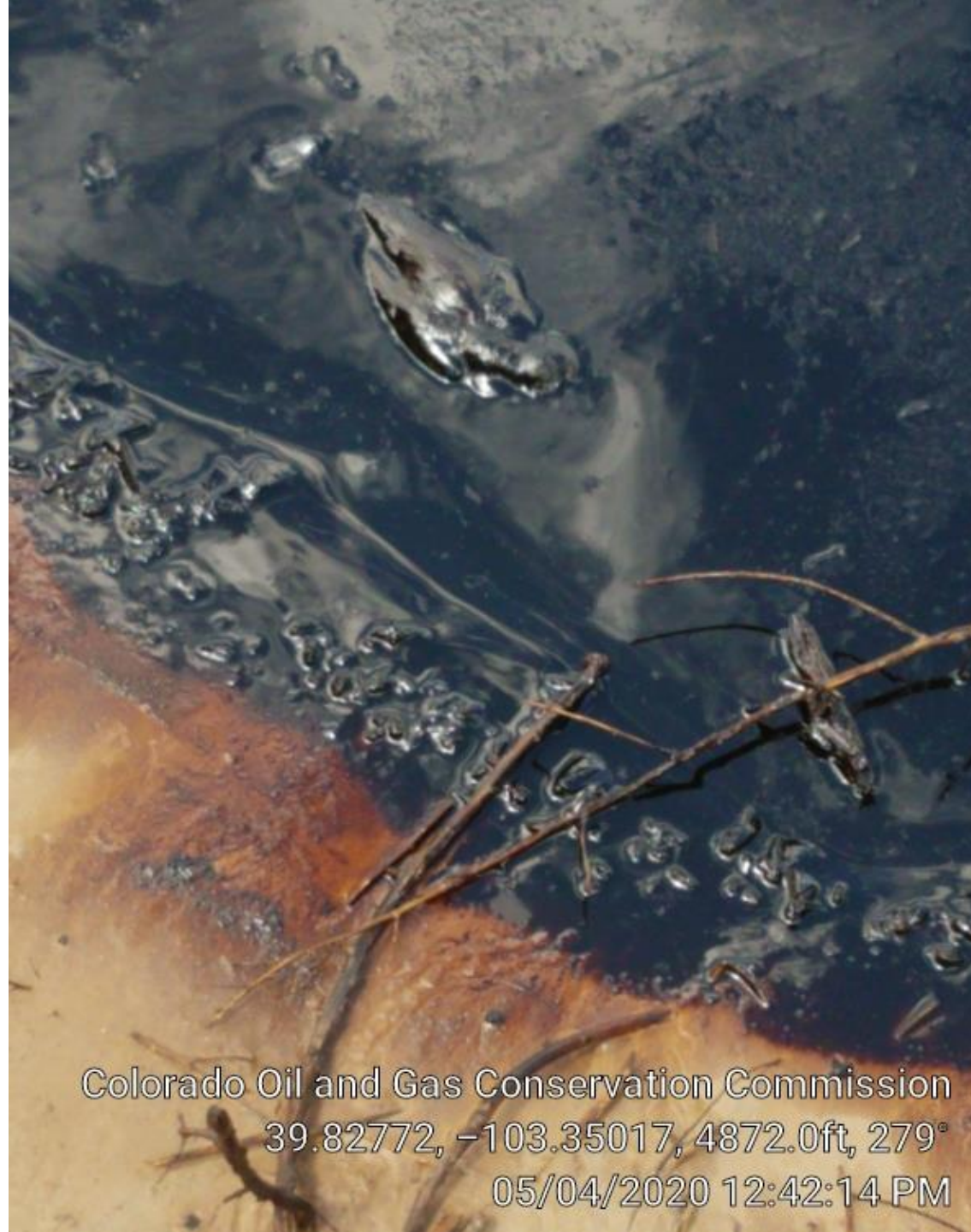
An aerial photograph of a small, rocky island in the middle of a dark blue ocean. The island is irregularly shaped with some lighter-colored rocks and patches of vegetation. The water around the island shows some white foam or surf. The overall scene is captured from a high altitude, looking down at the island.

Colorado Oil and Gas Conservation Commission  
39.82772, -103.35012, 4852.4ft, 268°  
05/04/2020 12:36:14 PM



Colorado Oil and Gas Conservation Commission  
39.82776, -103.35024, 4891.7ft, 310°  
05/04/2020 12:40:48 PM





Colorado Oil and Gas Conservation Commission  
39.82772, -103.35017, 4872.0ft, 279°  
05/04/2020 12:42:14 PM





Colorado Oil and Gas Conservation Commission

39.82729, -103.35024, 4996.7ft, 305°

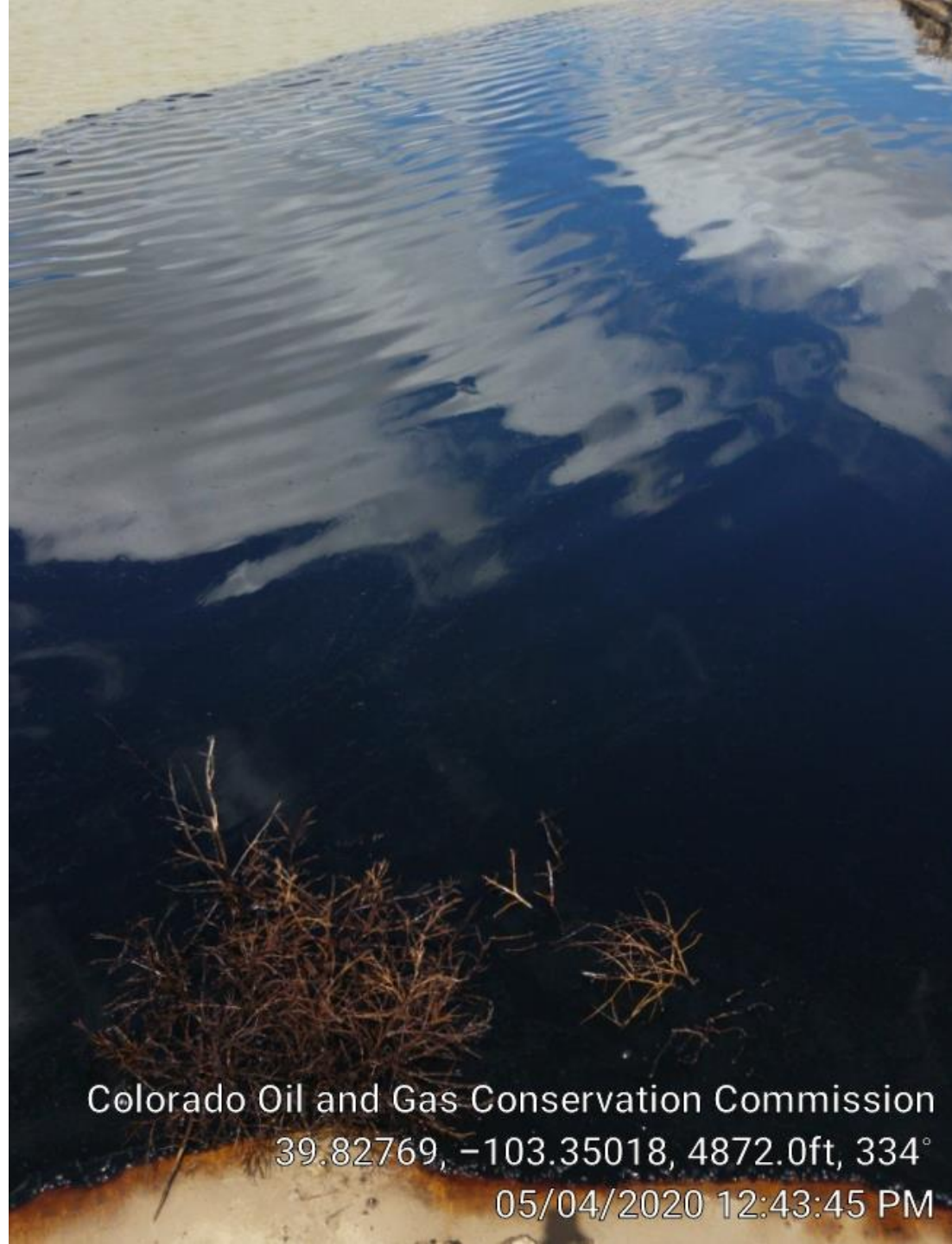
05/04/2020 12:46:03 PM





Colorado Oil and Gas Conservation Commission  
39.82772, -103.35024, 4901.6ft, 303°  
05/04/2020 12:46:12 PM





Colorado Oil and Gas Conservation Commission

39.82769, -103.35018, 4872.0ft, 334°

05/04/2020 12:43:45 PM





Colorado Oil and Gas Conservation Commission

39.8276, -103.35018, 4845.8ft, 103°

05/05/2020 11:06:09 AM





Colorado Oil and Gas Conservation Commission  
39.82765, -103.35019, 4858.9ft, 100°  
05/05/2020 11:08:24 AM



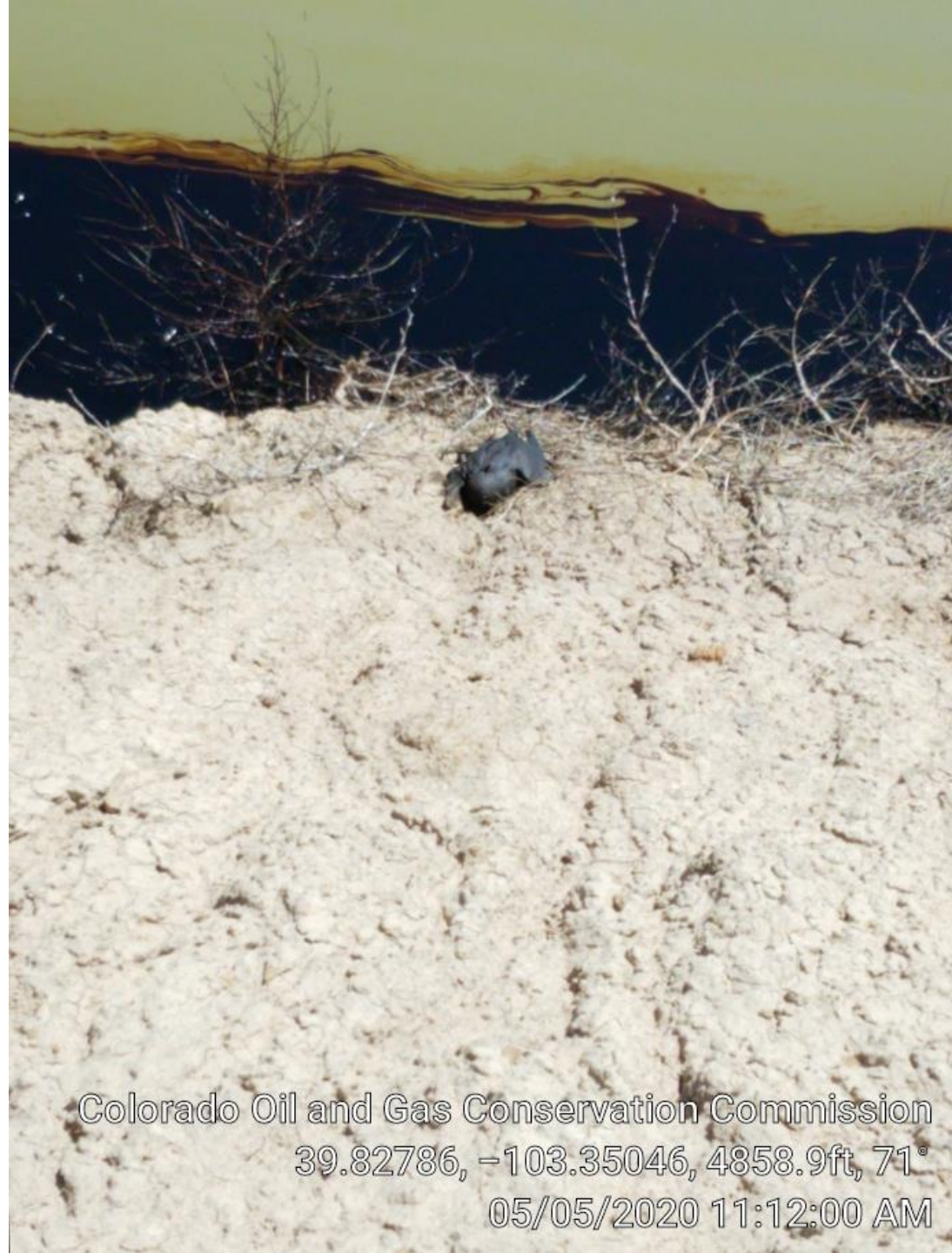


Colorado Oil and Gas Conservation Commission

39.82764, -103.35028, 4858.9ft, 33°

05/05/2020 11:08:53 AM



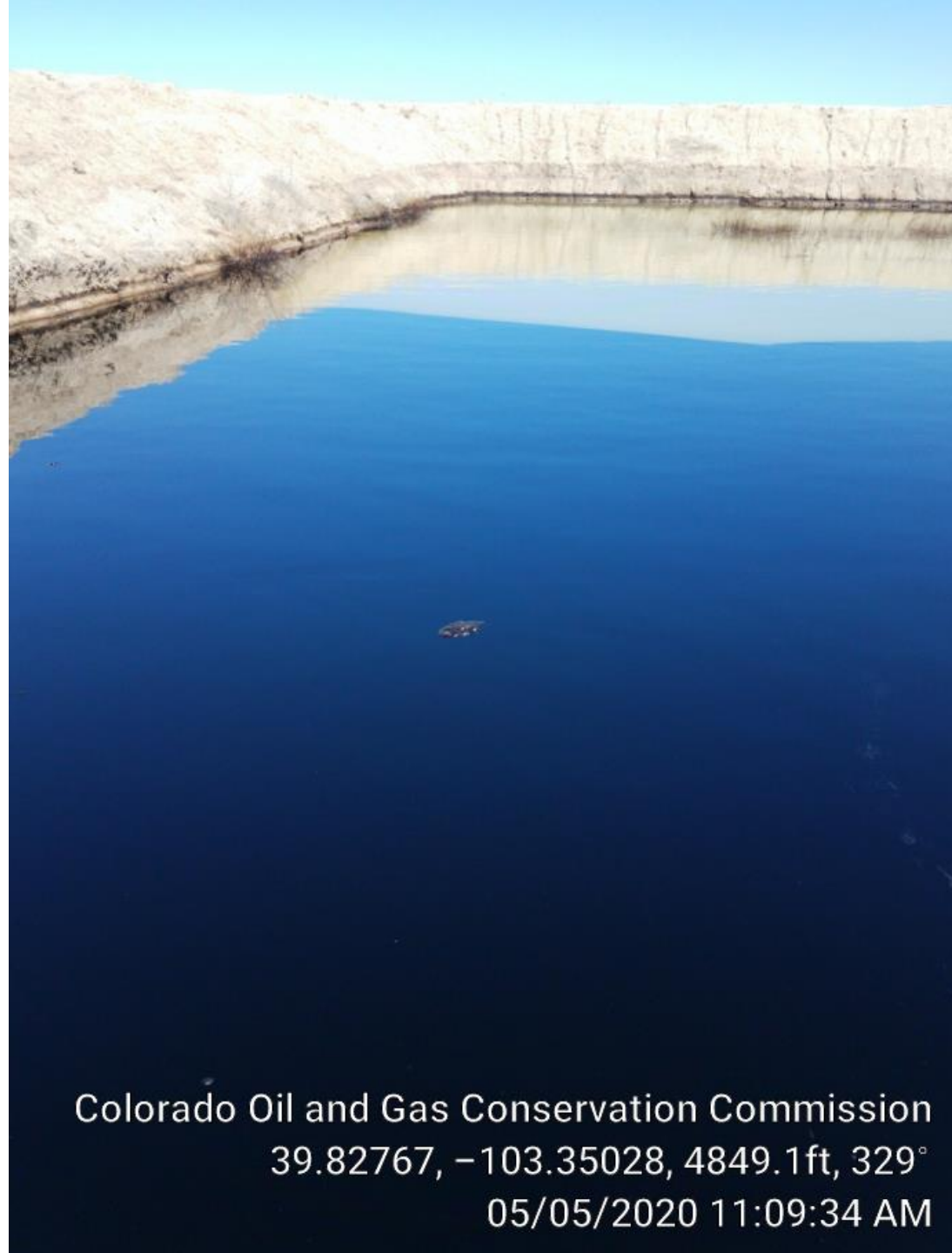


Colorado Oil and Gas Conservation Commission  
39.82786, -103.35046, 4858.9ft, 71°  
05/05/2020 11:12:00 AM





Colorado Oil and Gas Conservation Commission  
39.82778, -103.35045, 4852.4ft, 52°  
05/05/2020 11:11:12 AM



Colorado Oil and Gas Conservation Commission  
39.82767, -103.35028, 4849.1ft, 329°  
05/05/2020 11:09:34 AM





Colorado Oil and Gas Conservation Commission  
39.82799, -103.35017, 4875.3ft, 174°  
05/05/2020 11:50:04 AM



Colorado Oil and Gas Conservation Commission

39.82791, -103.3503, 4904.9ft, 145°

05/05/2020 11:19:33 AM





Colorado Oil and Gas Conservation Commission

39.82793, -103.35018, 4885.2ft, 206°

05/05/2020 11:51:10 AM





Colorado Oil and Gas Conservation Commission

39.8279, -103.35021, 4878.6ft, 200°

05/05/2020 11:55:23 AM



Colorado Oil and Gas Conservation Commission  
39.82785, -103.35045, 4862.2ft, 77°  
05/05/2020 11:19:41 AM





Pit berms  
eroding  
into field.

Colorado Oil and Gas Conservation Commission  
39.82784, -103.35011, 4865.5ft, 115°  
05/04/2020 12:35:09 PM





Colorado Oil and Gas Conservation Commission  
39.82764, -103.35033, 4849.1ft, 90°  
05/04/2020 12:34:01 PM





Colorado Oil and Gas Conservation Commission  
39.72199, -103.40187, 153°  
05/04/2020 12:53:03 PM



WARD AND SON OPERATING  
OGALLALA, NE  
EMERG. 1-308-280-0100 OR 911  
COLO. OPER. #94300  
WRIGHT 31-1  
SESE SEC.31-T2S-R53W  
WASHINGTON COUNTY, COLORADO  
RD. 18, 1.3 MI. W. OF RD., W

Colorado Oil and Gas Conservation Commission  
39.82838, -103.3523, 4836.0ft, 338°  
05/04/2020 12:54:26 PM





Colorado Oil and Gas Conservation Commission  
39.82839, -103.3522, 4839.2ft, 321°  
05/04/2020 12:54:42 PM



Colorado Oil and Gas Conservation Commission  
39.82839, -103.35227, 4836.0ft, 20°  
05/04/2020 12:54:34 PM





Colorado Oil and Gas Conservation Commission  
39.82841, -103.35227, 4986.9ft, 295°  
05/04/2020 12:59:03 PM