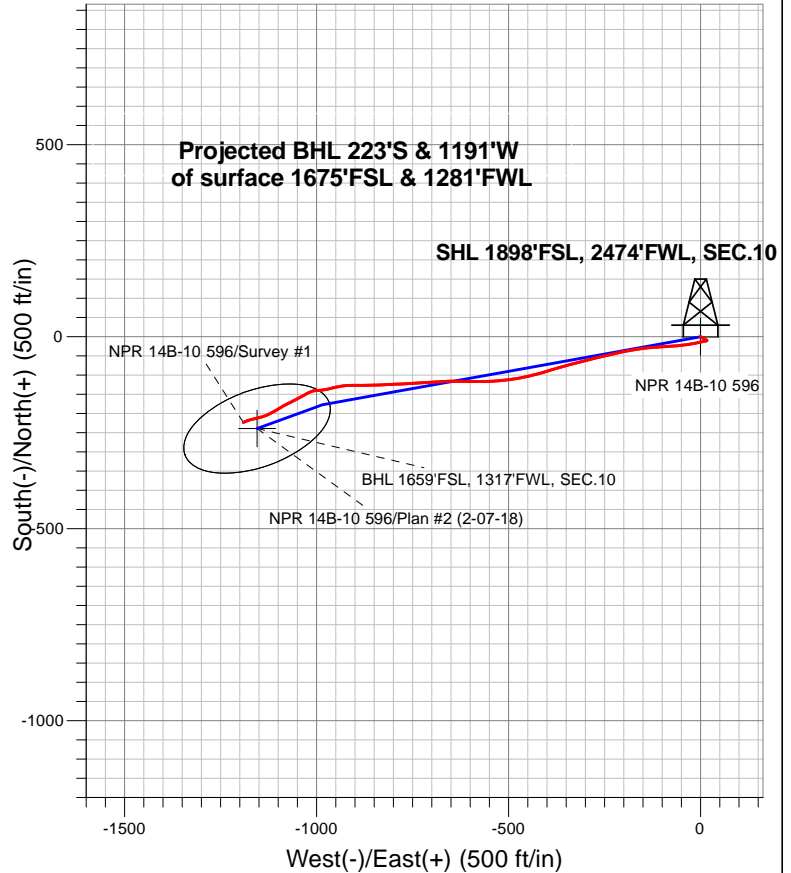





## Caerus Oil and Gas LLC



### L E G E N D

-  NPR 14B-10 596, NPR 14B-10 596 Wellbore #1, Plan #2 (2-07-18) V0
-  NPR 14B-10 596 Wellbore #1
-  Survey #1

## Final Survey Plot

**Projected Final Survey -**  
**9,485'MD & 9366' TVD @ 1210.1'VS**  
**4.4 deg Inc 246.4 deg AZ**

Project: SEC.10-T5S-R96W  
 Site: K10 596 Pad Sec.10-T5S-R96W  
 Well: NPR 14B-10 596  
 Plan: NPR 14B-10 596 Wellbore #1



## **Caerus Oil and Gas LLC**

**SEC.10-T5S-R96W**

**K10 596 Pad Sec.10-T5S-R96W**

**NPR 14B-10 596**

**NPR 14B-10 596 Wellbore #1**

**Survey: Survey #1**

## **Standard Survey Report**

**01 May, 2020**

<b>Company:</b>	Caerus Oil and Gas LLC	<b>Local Co-ordinate Reference:</b>	Well NPR 14B-10 596
<b>Project:</b>	SEC.10-T5S-R96W	<b>TVD Reference:</b>	WELL @ 6733.0ft (Original Well Elev)
<b>Site:</b>	K10 596 Pad Sec.10-T5S-R96W	<b>MD Reference:</b>	WELL @ 6733.0ft (Original Well Elev)
<b>Well:</b>	NPR 14B-10 596	<b>North Reference:</b>	True
<b>Wellbore:</b>	NPR 14B-10 596 Wellbore #1	<b>Survey Calculation Method:</b>	Minimum Curvature
<b>Design:</b>	NPR 14B-10 596 Wellbore #1	<b>Database:</b>	US_EDM

<b>Project</b>	SEC.10-T5S-R96W, Garfield County, CO		
<b>Map System:</b>	Universal Transverse Mercator (US Survey Feet)	<b>System Datum:</b>	Mean Sea Level
<b>Geo Datum:</b>	NAD 1927 - Western US		Using Well Reference Point
<b>Map Zone:</b>	Zone 12N (114 W to 108 W)		Using geodetic scale factor

Site		K10 596 Pad Sec.10-T5S-R96W						
Site Position:		Northing:	14,403,140.13	usft	Latitude:	39.627619		
From:	Lat/Long	Easting:	2,441,439.81	usft	Longitude:	-108.155411		
Position Uncertainty:	0.0	ft	Slot Radius:	13-3/16	"	Grid Convergence:	1.82	°

Well	NPR 14B-10 596					
Well Position	+N-S	0.0 ft	Northing:	14,403,120.49 usft	Latitude:	39.627564
	+E-W	0.0 ft	Easting:	2,441,452.83 usft	Longitude:	-108.155367
Position Uncertainty		0.0 ft	Wellhead Elevation:	0.0 ft	Ground Level:	6,709.0 ft

Wellbore		NPR 14B-10 596 Wellbore #1			
Magnetics	Model Name	Sample Date	Declination (°)	Dip Angle (°)	Field Strength (nT)
	IGRF2010	02/07/2018	9.58	65.63	51,625

Design	NPR 14B-10 596 Wellbore #1				
Audit Notes:					
Version:	1.0	Phase:	ACTUAL	Tie On Depth:	0.0
Vertical Section:	Depth From (TVD) (ft)	+N/-S (ft)	+E/-W (ft)	Direction (°)	
	0.0	0.0	0.0	262.00	

Survey Program		Date	05/01/2020		
From (ft)	To (ft)	Survey (Wellbore)	Tool Name	Description	
478.0	9,485.0	Survey #1 (NPR 14B-10 596 Wellbore #1)	MWD	MWD - Standard	

Survey	Wellbore Data									
	Measured Depth (ft)	Inclination (°)	Azimuth (°)	Vertical Depth (ft)	+N/-S (ft)	+E/-W (ft)	Vertical Section (ft)	Dogleg Rate (°/100usft)	Build Rate (°/100usft)	Turn Rate (°/100usft)
	0.0	0.00	0.00	0.0	0.0	0.0	0.0	0.00	0.00	0.00
	478.0	1.60	118.70	477.9	-3.2	5.9	-5.4	0.33	0.33	0.00
	571.0	2.40	115.20	570.9	-4.7	8.8	-8.0	0.87	0.86	-3.76
	666.0	2.40	117.50	665.8	-6.4	12.3	-11.3	0.10	0.00	2.42
	760.0	2.20	121.90	759.7	-8.3	15.6	-14.3	0.28	-0.21	4.68
	855.0	0.90	214.80	854.7	-9.9	16.7	-15.2	2.55	-1.37	97.79
	949.0	2.70	257.30	948.6	-11.0	14.1	-12.5	2.26	1.91	45.21
	1,044.0	5.00	259.60	1,043.4	-12.2	7.9	-6.1	2.43	2.42	2.42
	1,139.0	6.30	260.10	1,138.0	-13.8	-1.3	3.2	1.37	1.37	0.53
	1,234.0	7.90	259.00	1,232.2	-16.0	-12.9	15.0	1.69	1.68	-1.16

<b>Company:</b>	Caerus Oil and Gas LLC	<b>Local Co-ordinate Reference:</b>	Well NPR 14B-10 596
<b>Project:</b>	SEC.10-T5S-R96W	<b>TVD Reference:</b>	WELL @ 6733.0ft (Original Well Elev)
<b>Site:</b>	K10 596 Pad Sec.10-T5S-R96W	<b>MD Reference:</b>	WELL @ 6733.0ft (Original Well Elev)
<b>Well:</b>	NPR 14B-10 596	<b>North Reference:</b>	True
<b>Wellbore:</b>	NPR 14B-10 596 Wellbore #1	<b>Survey Calculation Method:</b>	Minimum Curvature
<b>Design:</b>	NPR 14B-10 596 Wellbore #1	<b>Database:</b>	US_EDM

Survey									
Measured Depth (ft)	Inclination (°)	Azimuth (°)	Vertical Depth (ft)	+N/-S (ft)	+E/-W (ft)	Vertical Section (ft)	Dogleg Rate (°/100usft)	Build Rate (°/100usft)	Turn Rate (°/100usft)
1,328.0	9.30	257.60	1,325.2	-18.8	-26.6	29.0	1.51	1.49	-1.49
1,422.0	10.80	262.90	1,417.7	-21.6	-42.8	45.4	1.87	1.60	5.64
1,517.0	11.70	266.90	1,510.9	-23.2	-61.2	63.9	1.25	0.95	4.21
1,611.0	13.00	265.30	1,602.7	-24.6	-81.3	83.9	1.43	1.38	-1.70
1,706.0	15.40	266.70	1,694.8	-26.2	-104.5	107.2	2.55	2.53	1.47
1,800.0	16.50	265.30	1,785.2	-28.0	-130.3	132.9	1.24	1.17	-1.49
1,895.0	17.20	261.60	1,876.1	-31.1	-157.6	160.4	1.35	0.74	-3.89
1,958.0	17.90	260.00	1,936.2	-34.2	-176.4	179.4	1.35	1.11	-2.54
2,124.0	18.10	256.70	2,094.1	-44.5	-226.6	230.6	0.63	0.12	-1.99
2,219.0	17.50	257.30	2,184.5	-51.1	-254.9	259.5	0.66	-0.63	0.63
2,313.0	17.20	256.20	2,274.2	-57.5	-282.2	287.5	0.47	-0.32	-1.17
2,407.0	17.00	255.30	2,364.1	-64.3	-309.0	314.9	0.35	-0.21	-0.96
2,502.0	16.80	255.10	2,455.0	-71.4	-335.7	342.3	0.22	-0.21	-0.21
2,597.0	16.30	254.80	2,546.1	-78.4	-361.8	369.2	0.53	-0.53	-0.32
2,691.0	15.60	253.60	2,636.4	-85.4	-386.7	394.8	0.82	-0.74	-1.28
2,786.0	15.30	252.70	2,728.0	-92.7	-410.9	419.8	0.40	-0.32	-0.95
2,880.0	14.90	256.90	2,818.8	-99.2	-434.5	444.1	1.24	-0.43	4.47
2,975.0	14.40	256.90	2,910.7	-104.6	-457.9	468.0	0.53	-0.53	0.00
3,069.0	13.20	260.80	3,002.0	-109.0	-479.9	490.4	1.61	-1.28	4.15
3,164.0	12.30	264.60	3,094.6	-111.7	-500.7	511.3	1.29	-0.95	4.00
3,258.0	11.40	263.00	3,186.6	-113.7	-519.9	530.6	1.02	-0.96	-1.70
3,353.0	11.40	266.30	3,279.7	-115.5	-538.5	549.4	0.69	0.00	3.47
3,448.0	11.60	268.90	3,372.8	-116.3	-557.5	568.2	0.58	0.21	2.74
3,542.0	10.80	270.60	3,465.0	-116.4	-575.7	586.3	0.92	-0.85	1.81
3,637.0	11.70	270.00	3,558.2	-116.3	-594.3	604.7	0.96	0.95	-0.63
3,731.0	12.00	271.30	3,650.2	-116.1	-613.6	623.7	0.43	0.32	1.38
3,826.0	11.50	271.70	3,743.2	-115.6	-632.9	642.8	0.53	-0.53	0.42
3,921.0	11.20	269.10	3,836.4	-115.4	-651.6	661.3	0.62	-0.32	-2.74
4,015.0	11.40	265.90	3,928.5	-116.2	-670.0	679.6	0.70	0.21	-3.40
4,109.0	10.60	266.90	4,020.8	-117.4	-687.9	697.5	0.87	-0.85	1.06
4,204.0	10.90	265.30	4,114.1	-118.6	-705.6	715.2	0.45	0.32	-1.68
4,298.0	11.30	266.70	4,206.4	-119.8	-723.6	733.2	0.51	0.43	1.49
4,393.0	11.40	267.80	4,299.5	-120.7	-742.3	751.9	0.25	0.11	1.16
4,488.0	11.60	266.60	4,392.6	-121.6	-761.2	770.7	0.33	0.21	-1.26
4,582.0	10.60	267.50	4,484.9	-122.6	-779.3	788.7	1.08	-1.06	0.96
4,677.0	10.30	267.20	4,578.3	-123.4	-796.5	805.9	0.32	-0.32	-0.32
4,772.0	9.60	267.00	4,671.9	-124.2	-812.9	822.3	0.74	-0.74	-0.21
4,866.0	9.10	267.90	4,764.6	-124.9	-828.1	837.5	0.55	-0.53	0.96
4,961.0	8.80	266.50	4,858.4	-125.6	-842.9	852.2	0.39	-0.32	-1.47
5,055.0	8.30	269.00	4,951.4	-126.2	-856.9	866.1	0.66	-0.53	2.66
5,150.0	7.90	269.70	5,045.5	-126.3	-870.2	879.4	0.43	-0.42	0.74
5,244.0	7.10	268.90	5,138.7	-126.5	-882.5	891.5	0.86	-0.85	-0.85
5,339.0	6.90	272.50	5,232.9	-126.3	-894.1	903.0	0.51	-0.21	3.79
5,433.0	6.70	268.50	5,326.3	-126.2	-905.2	914.0	0.55	-0.21	-4.26

<b>Company:</b>	Caerus Oil and Gas LLC	<b>Local Co-ordinate Reference:</b>	Well NPR 14B-10 596
<b>Project:</b>	SEC.10-T5S-R96W	<b>TVD Reference:</b>	WELL @ 6733.0ft (Original Well Elev)
<b>Site:</b>	K10 596 Pad Sec.10-T5S-R96W	<b>MD Reference:</b>	WELL @ 6733.0ft (Original Well Elev)
<b>Well:</b>	NPR 14B-10 596	<b>North Reference:</b>	True
<b>Wellbore:</b>	NPR 14B-10 596 Wellbore #1	<b>Survey Calculation Method:</b>	Minimum Curvature
<b>Design:</b>	NPR 14B-10 596 Wellbore #1	<b>Database:</b>	US_EDM

Survey									
Measured Depth (ft)	Inclination (°)	Azimuth (°)	Vertical Depth (ft)	+N/-S (ft)	+E/-W (ft)	Vertical Section (ft)	Dogleg Rate (°/100usft)	Build Rate (°/100usft)	Turn Rate (°/100usft)
5,527.0	6.50	267.70	5,419.7	-126.6	-916.0	924.7	0.23	-0.21	-0.85
5,622.0	5.40	264.80	5,514.1	-127.2	-925.8	934.5	1.20	-1.16	-3.05
5,716.0	4.90	260.90	5,607.8	-128.2	-934.2	942.9	0.65	-0.53	-4.15
5,811.0	4.20	260.10	5,702.5	-129.5	-941.6	950.5	0.74	-0.74	-0.84
5,906.0	3.20	258.10	5,797.3	-130.6	-947.6	956.6	1.06	-1.05	-2.11
6,000.0	3.00	253.60	5,891.1	-131.9	-952.6	961.7	0.33	-0.21	-4.79
6,285.0	2.60	256.90	6,175.8	-135.4	-966.0	975.5	0.15	-0.14	1.16
6,568.0	3.50	264.30	6,458.4	-137.7	-980.9	990.5	0.35	0.32	2.61
6,852.0	4.20	265.00	6,741.7	-139.5	-999.9	1,009.5	0.25	0.25	0.25
7,136.0	4.70	245.00	7,024.9	-145.3	-1,020.8	1,031.1	0.57	0.18	-7.04
7,420.0	4.70	237.20	7,308.0	-156.6	-1,041.1	1,052.7	0.22	0.00	-2.75
7,703.0	5.10	247.10	7,589.9	-167.7	-1,062.4	1,075.4	0.33	0.14	3.50
7,987.0	4.90	239.20	7,872.8	-178.9	-1,084.5	1,098.8	0.25	-0.07	-2.78
8,271.0	5.10	238.40	8,155.8	-191.7	-1,105.6	1,121.6	0.07	0.07	-0.28
8,460.0	5.10	242.20	8,344.0	-200.0	-1,120.2	1,137.2	0.18	0.00	2.01
8,743.0	3.70	257.90	8,626.2	-207.8	-1,140.3	1,158.1	0.65	-0.49	5.55
9,027.0	4.20	253.30	8,909.5	-212.7	-1,159.2	1,177.5	0.21	0.18	-1.62
9,215.0	3.90	258.00	9,097.0	-216.0	-1,172.1	1,190.7	0.24	-0.16	2.50
9,405.0	4.40	246.40	9,286.5	-220.3	-1,185.1	1,204.2	0.51	0.26	-6.11
9,485.0	4.40	246.40	9,366.3	-222.7	-1,190.7	1,210.1	0.00	0.00	0.00

Checked By: \_\_\_\_\_ Approved By: \_\_\_\_\_ Date: \_\_\_\_\_