



# Kerr-McGee Oil & Gas Onshore LP

1099 18<sup>th</sup> Street  
Denver, CO 80202  
720-929-6000

March 23, 2020

Jeff Robbins  
Director, Colorado Oil and Gas Conservation Commission  
Department of Natural Resources – The Chancery Building  
1120 Lincoln Street, Suite 801  
Denver, CO 80203

Re: **30 Day Certification Letter - 318A.e**  
BAKE 11-27HZ (Doc No. 402260605)  
Township 4 North, Range 68 West  
Section 11: SWNW  
Unit Acreage: 720 Acres  
Proposed Spacing Unit:  
04N68W SEC 09: S2S2;  
04N68W SEC 10: S2S2;  
04N68W SEC 11: SWSW  
04N68W SEC 14: NWNW;  
04N68W SEC 15: N2N2;  
04N68W SEC 16: N2N2  
Weld County, Colorado

Dear Director Robbins:

Kerr-McGee Oil and Gas Onshore LP (“KMG”) hereby certifies that a thirty (30) day notice has been given by certified mail to all mineral owners in the proposed wellbore spacing unit. We have not received any objections to such well location, proposed spacing unit, or additional producing formation. KMG hereby respectfully requests approval of this boundary well.

If you have any questions or issues regarding this permit, please contact me at (720) 929-3167.

Sincerely,

**Kerr-McGee Oil and Gas Onshore LP**

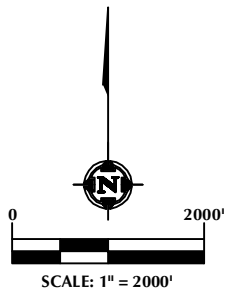
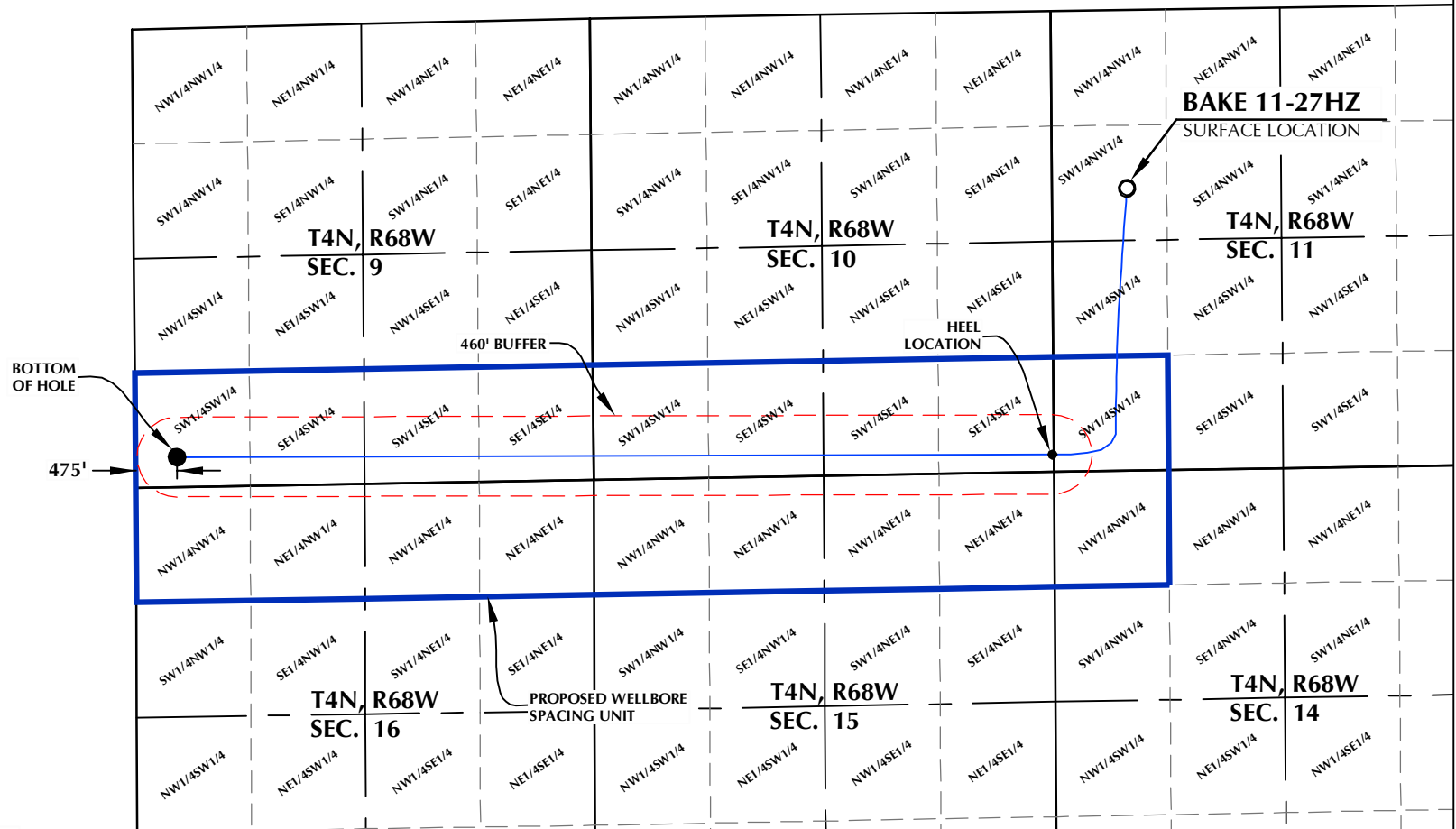
A handwritten signature in black ink that reads 'Samantha Petite'.

Samantha Petite  
Regulatory Analyst

Enclosure

SURFACE LOCATION: NAD 83  
 GROUND ELEVATION= 4990.4'  
 LATITUDE= 40.329878°  
 LONGITUDE= -104.976664°  
 LATITUDE= 40°19'47.561"  
 LONGITUDE= -104°58'35.992"  
 HEEL LOCATION: NAD 83  
 LATITUDE= 40.321445°  
 LONGITUDE= -104.979820°  
 LATITUDE= 40°19'17.202"  
 LONGITUDE= -104°58'47.352"  
 BOTTOM HOLE LOCATION: NAD 83  
 LATITUDE= 40.321521°  
 LONGITUDE= -105.016075°  
 LATITUDE= 40°19'17.476"  
 LONGITUDE= -105°00'57.870"

# BAKE 11-27HZ WELLBORE SPACING UNIT



DISTANCE FROM COMPLETED  
 PORTION OF WELLBORE TO  
 NEAREST UNIT BOUNDARY= 475'

## WELL PAD - S&B 5-11HZ

BAKE 11-27HZ  
 WELLBORE SPACING UNIT  
 2057' FNL & 867' FWL SWNW (SURFACE)  
 LOCATED IN SECTION 11  
 200' FSL & 15' FEL SESE (HEEL)  
 LOCATED IN SECTION 10  
 346' FSL & 475' FWL SWSW (BOTTOM)  
 LOCATED IN SECTION 9  
 T4N, R68W, 6TH P.M.  
 WELD COUNTY, COLORADO

**Kerr-McGee Oil &  
 Gas Onshore L.P.**  
 1099 18th Street  
 Denver, Colorado 80202



## CONSULTING, LLC

SHERIDAN OFFICE  
 1095 Saberton Avenue  
 Sheridan, Wyoming 82801  
 Phone 307-674-0609

LOVELAND OFFICE  
 6706 North Franklin Avenue  
 Loveland, Colorado 80538  
 Phone 970-776-4331

DRAFTED BY:	MDB	CHECKED BY:	RKF
DATE DRAFTED:	3/5/19	DATE SURVEYED:	1/30/19
REVISED:		FILE NAME:	18-209

## NOTES:

1. DRAWING LATITUDE AND LONGITUDE COORDINATES ARE NAD 83 (2011)(EPOCH:2010).
2. ELEVATION BASED ON NAVD88 (GEOID12B).
3. BASIS OF BEARING DERIVED FROM COLORADO COORDINATE SYSTEM OF 1983 NORTH ZONE.
4. ALL MEASURED DISTANCES ARE GRID. COMBINED SCALE FACTOR: .99972262 CALCULATED FROM THE N. 1/4 CORNER OF SECTION 11, T4N, R68W.