

\\ANADARKO\2018_209_SHAKE_N'_BAKE_T4N_R68W_SEC_11\PLATS\S&B 5-11HZ PLAT.dwg, 3/5/2019 1:21:14 PM, lisa

N. 1/4 COR.
SEC. 9, T4N, R68W
FOUND 2 1/2" ALUM. CAP
L.S. NO. 12374

NW. COR.
SEC. 9, T4N, R68W
FOUND 2 1/2"
ALUM. CAP W.C.
600' WEST OF TRUE
CORNER POSITION
P.L.S. NO. 38065

N. 1/4 COR.
SEC. 9, T4N, R68W
FOUND 2 1/2" ALUM. CAP
L.S. NO. 12374

NE. COR.
SEC. 9, T4N, R68W
FOUND 2 1/2" ALUM. CAP
▲ ILLEGIBLE

S 88°36'50" W 2649.27' (M)

S 88°43'03" W 2636.82' (M)

N 00°29'41" W 2646.78' (M)

1 00°25'55" W
2661.75' (M)

N 00°29'54" W 2673.37' (M)

SURFACE LOCATION: NAD 83
GROUND ELEVATION= 4991.2'
LATITUDE= 40.329879°
LONGITUDE= -104.976826°
LATITUDE= 40°19'47.563"
LONGITUDE= -104°58'36.573"
HEEL LOCATION: NAD 83
LATITUDE= 40.324828°
LONGITUDE= -104.980039°
LATITUDE= 40°19'29.381"
LONGITUDE= -104°58'48.140"
BOTTOM HOLE LOCATION: NAD 83
LATITUDE= 40.324805°
LONGITUDE= -105.016087°
LATITUDE= 40°19'29.298"
LONGITUDE= -105°00'57.913"

MATCH LINE
SEE SHEET 1

9

CENTER 1/4 COR.
SEC. 9, T4N, R68W
FOUND 2 1/2" ALUM. CAP
L.S. NO. 30462

E. 1/4 COR.
SEC. 9, T4N, R68W
FOUND 2 1/2" ALUM. CAP
P.L.S. NO. 37911

W. 1/4 COR.
SEC. 9, T4N, R68W
FOUND 2 1/2" ALUM. CAP
L.S. NO. 12374

S 88°56'13" W
2646.17' (M)

S 88°58'15" W
2639.78' (M)

S 89°37'40" W 10051' GRID
S 89°57'57" W TRUE
S 81°45'40" W MAGNETIC

N 00°29'46" W 2645.34' (M)

1 00°25'12" W
2648.45' (M)

00°30'13" W 3649 07' (M)

BOTTOM OF HOLE:
1543' FSL & 475' FWL

1543!

SW. COR.
SEC. 9, T4N, R68W
FOUND 3 1/4" ALUM. CAP
L.S. NO. 22098

S 89°00'13" W 2642.62' (M)

S. 1/4 COR.
SEC. 9, T4N, R68W
FOUND 2 1/2" ALUM. CAP
L.S. NO. 12374

S 89°00'15" W 2642.86' (M)

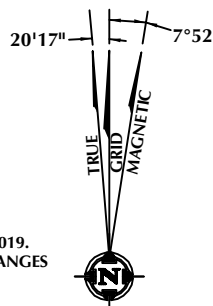
SE. COR.
SEC. 9, T4N, R68W
FOUND 3 1/4" ALUM. CAP
ILLEGIBLE

THIS IS TO CERTIFY THAT THE ABOVE PLAT WAS PREPARED FROM FIELD NOTES OF ACTUAL SURVEYS MADE BY ME OR UNDER MY SUPERVISION AND THAT THE SAME ARE TRUE AND CORRECT TO THE BEST OF MY KNOWLEDGE AND BELIEF. THIS CERTIFICATE DOES NOT REPRESENT A LAND SURVEY PLAT OR IMPROVEMENT SURVEY PLAT AS DEFINED BY C.R.S. §-57-102 AND CANNOT BE RELIED UPON TO DETERMINE OWNERSHIP.

RANDALL K. FRENCH
PROFESSIONAL LAND SURVEYOR
COLORADO REGISTRATION NUMBER 38512

NOTICE: ACCORDING TO COLORADO STATE LAW YOU MUST COMMENCE A LEGAL ACTION BASED UPON ANY DEFECT IN THIS SURVEY WITHIN THREE YEARS AFTER YOU FIRST DISCOVER SUCH DEFECT. IN NO EVENT MAY ANY ACTION BASED UPON ANY DEFECT IN THIS SURVEY BE COMMENCED MORE THAN TEN YEARS FROM THE DATE ON THE CERTIFICATION SHOWN HEREON.

**NOTE:
MAGNETIC NORTH IS
CURRENT AS OF 1/30/2019.
MAGNETIC NORTH CHANGES
WEST 0°06' PER YEAR.**



A horizontal scale bar with alternating black and white segments. It is marked with '0' at the left end, '1000'' at the midpoint, and '2000'' at the right end.

SCALE: 1" = 1000'

NOTES:

1. ▲ INDICATES SECTION CORNER.
2. ● INDICATES CALCULATED CORNER.
3. ELEVATION BASED ON NAVD88 (GEOID12B).
4. BASIS OF BEARING DERIVED FROM COLORADO COORDINATE SYSTEM OF 1983 NORTH ZONE.
5. ALL MEASURED DISTANCES ARE GRID.
6. COMBINED SCALE FACTOR: .99972262 CALCULATED FROM THE N. 1/4 CORNER OF SECTION 11, T4N, R68W.
7. OPERATOR: JEREMY GROVES / PDOP = 1.5.
8. SEE ADDENDUM TO WELL LOCATION CERTIFICATE FOR EXISTING IMPROVEMENTS WITHIN 500' OF THE WELL PAD.
9. WELL FOOTAGES ARE MEASURED AT RIGHT ANGLES TO THE SECTION LINES.
10. THE BOTTOM OF HOLE BEARS S89°37'40"W, 10051' FROM THE HELL LOCATION.

WELL PAD - S&B 5-11HZ

BAKE 11-24HZ
WELL LOCATION CERTIFICATE
2056' FNL & 822' FWL SWNW (SURFACE)
LOCATED IN SECTION 11
1433' FSL & 75' FEL NESE (HEEL)
LOCATED IN SECTION 10
1543' FSL & 475' FWL NWSW (BOTTOM)
LOCATED IN SECTION 9
T4N, R68W, 6TH P.M.
WELD COUNTY, COLORADO

**Kerr-McGee Oil &
Gas Onshore L.P.**
1099 18th Street
Denver, Colorado 80202



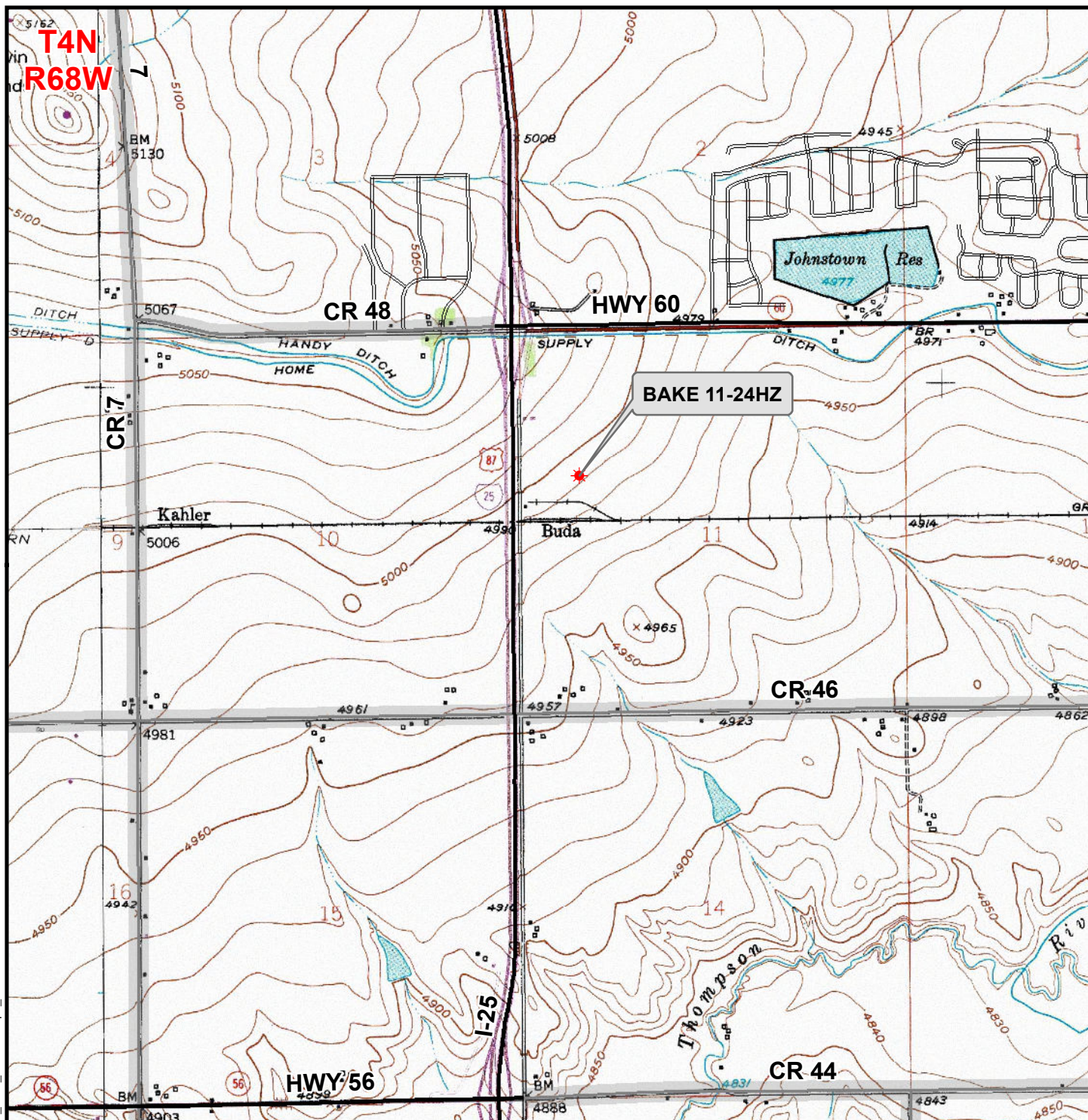
CONSULTING, LLC

SHERIDAN OFFICE
1095 Saberton Avenue
Sheridan, Wyoming 82801
Phone 307-674-0609

LOVELAND OFFICE
6706 North Franklin Avenue
Loveland, Colorado 80538
Phone 970-776-4331

DRAFTED BY:	LMO	CHECKED BY:	RKF	SHEET NO: 2 2 OF 2
DATE DRAFTED:	3/5/19	DATE SURVEYED:	1/30/19	
REVISED:		FILE NAME:	18-209	

K:\ANADARKO\2018\2018_209_SHAKE_N'_BAKE_T4N_R68W_SEC_11\GIS\Maps_ABC\S&B 5-11HZ\BAKE 11-24HZ.mxd 2/14/2019 9:07:03 AM



Legend

- ★ Well - Proposed ===== Road - Primitive - Existing ——— Road - County - Existing
———— Road - Improved - Existing ——— Road - Highway - Existing

WELL PAD - S&B 5-11HZ
GENERAL LOCATION MAP
BAKE 11-24HZ
LOCATED IN SECTION 11
T4N, R68W, 6th P.M.
WELD COUNTY, COLORADO

**Kerr-McGee Oil &
Gas Onshore L.P.**

1099 18th Street
Denver, Colorado 80202



CONSULTING, LLC

SHERIDAN OFFICE **LOVELAND OFFICE**
1095 Saberton Avenue 6706 North Franklin Avenue
Sheridan, Wyoming 82801 Loveland, Colorado 80538
Phone 307-674-0609 Phone 970-776-4331



SCALE: 1" = 2,000ft

NAD83 CO-Nft

DRAWN: DP

DATE: 15 Feb 2019

REVISED:

DATE: