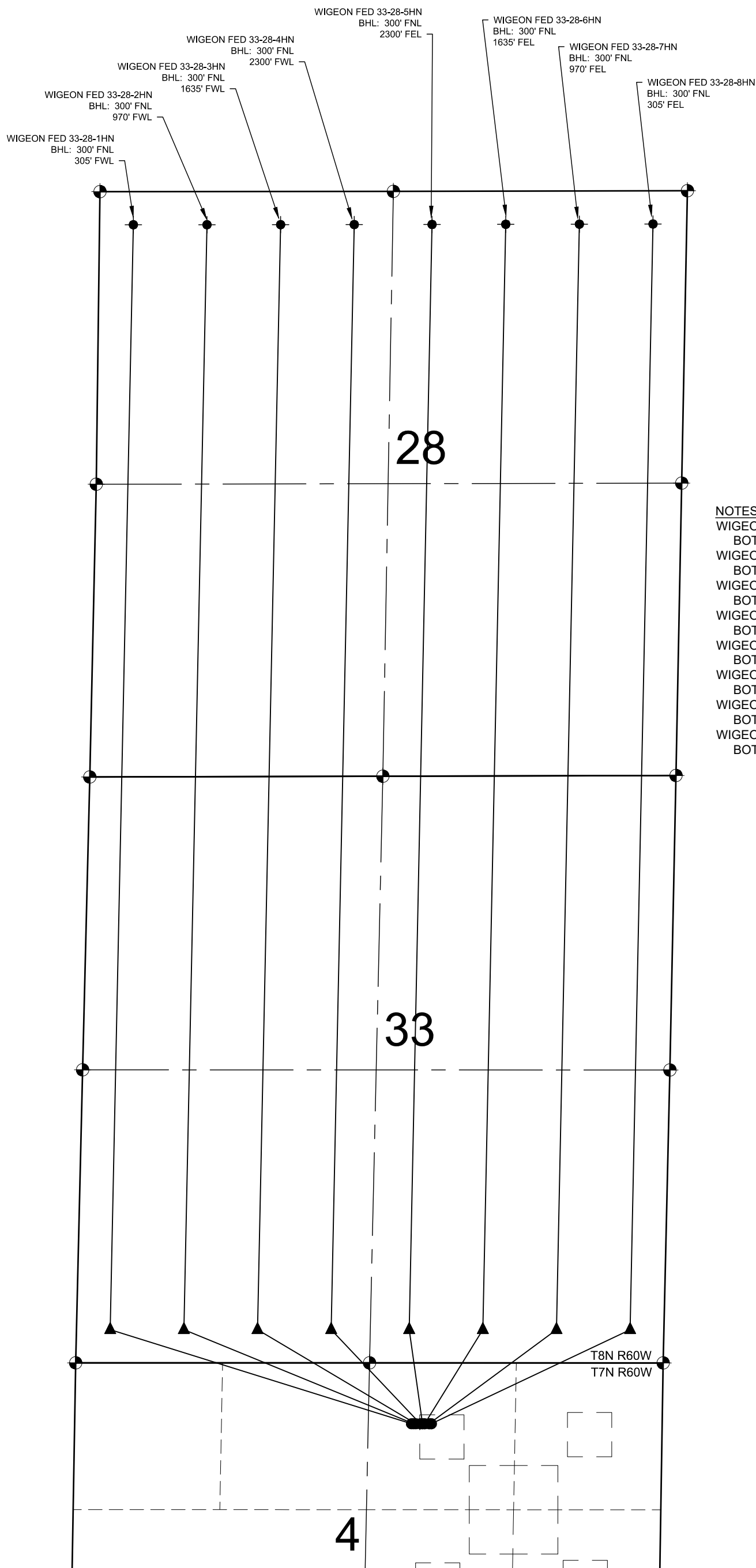


WIGEON FED PAD MULTI-WELL PLAN



NOTES:

1. THIS FIELD SURVEY CONFORMS TO THE MINIMUM STANDARDS SET BY THE COGCC, RULE NO. 215
2. ALL DISTANCES AND BEARINGS SHOWN HEREON ARE GROUND VALUES AS GPS MEASURED IN THE FIELD, WITH TIES TO WELLS MEASURED PERPENDICULAR TO LINES SHOWN HEREON. THIS LOW DISTORTION PROJECTION (LDP) IS BASED ON THE NORTH AMERICAN DATUM OF 1983, U.S. SURVEY FOOT WITH A LATITUDE ORIGIN OF 40.655085°N, A CENTRAL MERIDIAN LONGITUDE OF 104.086861°W, AND A SCALE FACTOR ON THE CENTRAL MERIDIAN OF 1.000232 (EXACT). THE LDP BASIS OF BEARINGS IS GEODETIC NORTH.
3. FIELD VERIFICATION OF MONUMENTS COMPLETED WITHIN 1 YEAR OF SIGNATURE DATE, UNLESS OTHERWISE NOTED.

NOTES:

- WIGEON FED 33-28-1HN TO BE AT 550' FNL & 2264' FEL.
BOTTOM HOLE AT 300' FNL & 305' FWL, SEC. 28, T8N R60W.
- WIGEON FED 33-28-2HN TO BE AT 550' FNL & 2244' FEL.
BOTTOM HOLE AT 300' FNL & 970' FWL, SEC. 28, T8N R60W.
- WIGEON FED 33-28-3HN TO BE AT 550' FNL & 2224' FEL.
BOTTOM HOLE AT 300' FNL & 1635' FWL, SEC. 28, T8N R60W.
- WIGEON FED 33-28-4HN TO BE AT 550' FNL & 2184' FEL.
BOTTOM HOLE AT 300' FNL & 2300' FWL, SEC. 28, T8N R60W.
- WIGEON FED 33-28-5HN TO BE AT 550' FNL & 2164' FEL.
BOTTOM HOLE AT 300' FNL & 2300' FEL, SEC. 28, T8N R60W.
- WIGEON FED 33-28-6HN TO BE AT 550' FNL & 2144' FEL.
BOTTOM HOLE AT 300' FNL & 1635' FEL, SEC. 28, T8N R60W.
- WIGEON FED 33-28-7HN TO BE AT 550' FNL & 2104' FEL.
BOTTOM HOLE AT 300' FNL & 970' FEL, SEC. 28, T8N R60W.
- WIGEON FED 33-28-8HN TO BE AT 550' FNL & 2084' FEL.
BOTTOM HOLE AT 300' FNL & 305' FEL, SEC. 28, T8N R60W.

LEGEND

- = EXISTING MONUMENT
- ▲ = LANDING POINT
- = CALCULATED POSITION
- ◆ = EXISTING WELL
- = PROPOSED WELL
- LP = LANDING POINT
- ◆ = BOTTOM HOLE
- BHL = BOTTOM HOLE

