

AFE #		PO:	
LEASE NAME / NUMBER		API WELL NUMBER	
WELLS RANCH 42-5		0512321803	
SECTION	TOWNSHIP	RANGE	COUNTY, STATE
SENE 5	5N	63W	WELD, COLORADO
WELL PERMIT NUMBER			
JOB TYPE		CM-P2A-PERM.	
Vehicle Type		Single	

TICKET	BCO-2004-0010		
DATE	4/3/2020		
CREW INFORMATION			
SUPERVISOR	Kacey Laeger		
PUMP UNIT	944528		
NUMBERS	CPF002		
ARRIVAL (D&T)	4/3/20 7:30 AM		
DEPARTURE (D&T)	4/3/20 10:30 AM		

[illegible][illegible]

Date Signed



Job Summary

Ticket Number		Ticket Date	
TN#	BCO-2004-0010	4/3/2020	
COUNTY	COMPANY	API Number	
WELD	PDC ENERGY	0512321803	
WELL NAME	RIG	JOB TYPE	
WELLS RANCH 42-5	Ensign 312	CM-P2A-PERM.	
SURFACE WELL LOCATION	CJES Field Supervisor	CUSTOMER REP	
40.43031 -104.45375	Kacey Laeger	Matthew McGraw	

EMPLOYEES

James Payne		
Jared Cross		
Cabe Culbertson		

WELL PROFILE

Max Treating Pressure (psi):		Bottom Hole Static Temperature (°F):	
Bottom Hole Circulating Temperature (°F):		Well Type:	

Open Hole

1	Size (in)	TMD From (ft)	TMD to (ft)	TVD From (Ft)	TVD to (Ft)
2	Size (in)	TMD From (ft)	TMD to (ft)	TVD From (Ft)	TVD to (Ft)

Casing/Tubing/Drill Pipe

Type	Size (in)	Weight (lb/ft)	Grade	TMD From (ft)	TMD to (ft)	TVD From (Ft)	TVD to (Ft)
Surface	8 5/8	24	J55	0	367		
Type	Size (in)	Weight (lb/ft)	Grade	TMD From (ft)	TMD to (ft)	TVD From (Ft)	TVD to (Ft)
Production	4.5	10.5	J55	0	1648		
Type	Size (in)	Weight (lb/ft)	Grade	TMD From (ft)	TMD to (ft)	TVD From (Ft)	TVD to (Ft)
Work string	2 3/8	4.7	J55	0	1648		

CEMENT DATA

Stage 1:	From Depth (ft):	0	To Depth (ft):	1648
Type: Shoe Plugs	Volume (sacks):	102	Volume (bbls):	24
Cement & Additives:		Density (ppg)	Yield (ft³/sk)	Water Req.

Stage 2:	From Depth (ft):	0	To Depth (ft):	150
Type: Surface Plug	Volume (sacks):	28	Volume (bbls):	6.6
Cement & Additives:		Density (ppg)	Yield (ft³/sk)	Water Req.

Stage 3:	From Depth (ft):		To Depth (ft):	
Type: Top Off	Volume (sacks):		Volume (bbls):	
Cement & Additives:		Density (ppg)	Yield (ft³/sk)	Water Req.

Stage 4:	From Depth (ft):		To Depth (ft):	
Type:	Volume (sacks):		Volume (bbls):	
Cement & Additives:		Density (ppg)	Yield (ft³/sk)	Water Req.

SUMMARY

Preflushes:	4 bbls of Fresh Water	Calculated Displacement (bbl):	Stage 1	Stage 2
	bbls of	Actual Displacement (bbl):		
	bbls of	Plug Bump (Y/N):		Bump Pressure (psi):
Total Preflush/Spacer Volume (bbl):	4	Lost Returns (Y/N):		(if Y, when)
Total Slurry Volume (bbl):	30.6			
Total Fluid Pumped	34.6			
Returns to Surface:	Cement 1 bbls			

Job Notes (fluids pumped / procedures / tools / etc.):

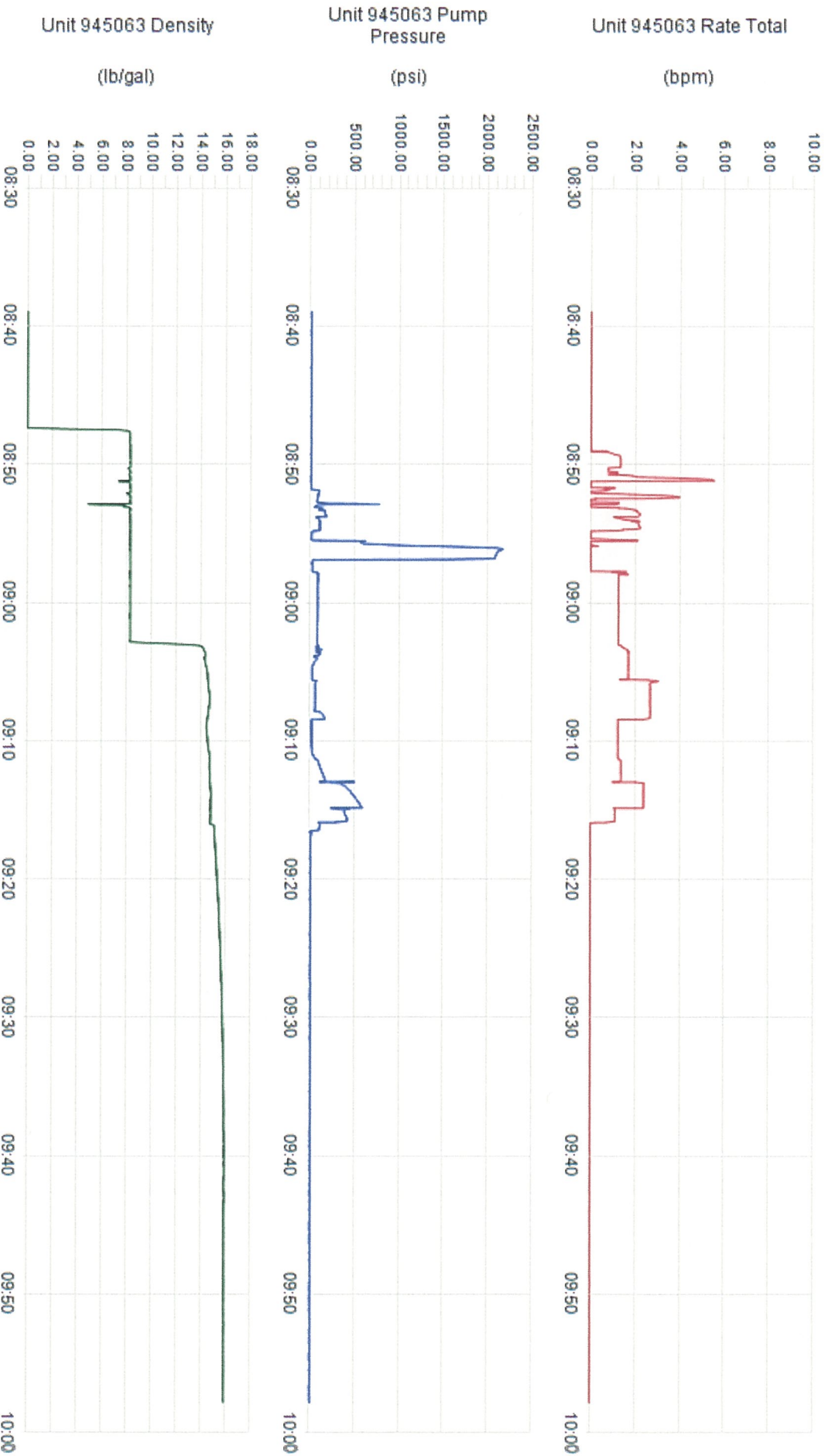
Pressure test , pump 4 bbls h20 , pump 24bbls cemen t14.8 # to surface stop let rig trip out of hole tie on surface casing squeeze 6.6bbls stop ,wash up, rig out leave location

Customer Representative Signature:

Thank You For Using
NexTier Completion Solutions



Client	PDC	Supervisor	Kacey Laeger
Ticket No.	BCO-2004-0010	Unit No.	945063
Location	Brighton	Service District	Brighton
Comments		Job Date	04/03/2020
		Well Name	Wells Ranch 42-5
		Job Type	Abandonment Plugs



	CUSTOMER P. O. NUMBER		SERVICE ORDER 3049		PAGE 1 of 1	
	SureFire Wireline You are hereby requested to perform or attempt to perform the following service(s) or furnish the following equipment:					DATE 4/2/2020
SERVICE(S) AND/OR EQUIPMENT REQUESTED						
CUSTOMER	COMPANY	PDC Energy, Inc				
FURNISHED	LEASE	0 Wells Ranch		WELL NUMBER	0 42-5	
LEASE/WELL	API:	0				
INFORMATION	FIELD	Wattenberg	PARISH/COUNTY	WELD	STATE	Colorado
THE UNDERSIGNED, HEREINAFTER REFERRED TO AS CUSTOMER AGREES TO PAY YOU FOR THE ABOVE SPECIFIED SERVICE(S) (INCLUDING LEASED EQUIPMENT) AND ANY ADDITIONAL SERVICE(S) REQUESTED, AT THE FIELD OFFICE OF SUREFIRE WIRELINE WEST COLORADO LLC., IN ACCORDANCE WITH THE APPLICABLE PROVISIONS OF YOUR CURRENT PRICE SCHEDULE. IN CONSIDERATION OF THE PRICES AS ARE SET OUT IN YOUR CURRENT APPLICABLE PRICE SCHEDULE WE CHOOSE TO BE BOUND BY THE TERMS AND CONDITIONS SET OUT IN THE CURRENT PRICE SCHEDULE (ALSO PRINTED ON THE REVERSE SIDE HEREOF), INCLUDING THE ASSUMPTION BY US OF THE LIABILITIES AND RESPONSIBILITIES CONTAINED IN THE RESPONSIBILITIES HEREIN ASSUMED BY US. WHEN SIGNED BY AN AGENT ON BEHALF OF CUSTOMER, SAID AGENT REPRESENTS THAT HE HAS FULL AUTHORITY FROM HIS PRINCIPAL TO EXECUTE SAME, IN THE ABSENCE OF AUTHORITY, THE SIGNER AGREES THAT HE SHALL BE OBLIGATED HEREUNDER AS CUSTOMER.						
CUSTOMER NAME PDC Energy, Inc						
INVOICE MAILING ADDRESS				CITY	STATE	ZIP CODE
SIGNATURE OF CUSTOMER OR AUTHORIZED REPRESENTATIVE						
X				Thank you for using SureFire Wireline!!		Total runs, all pages 6
THE ESTIMATED CHARGES AND DATA SHOWN ARE SUBJECT TO CORRECTION BY SUREFIRE WIRELINE WEST COLORADO ACCOUNTING						
UNIT NUMBER 803	OPERATION TYPE: DAYLIGHT	WELL TYPE: WORKOVER	ROUND TRIP MILEAGE			
TRIP: FIRST	HOISTING TYPE: WORKOVER RIG					
WIRELINE DEPTH		MAX. WELLHEAD PRESSURE		PSI		BOTTOM HOLE PRESSURE: PSI
Desc. NO.	PERF. INTERVAL	PLUG DEPTH	OPERATION	ITEM	QUAN.	AMOUNT
1			P - 5K Packoff	each	1	
2		6443'	P - Plug or Retainer - setting (3rd party)	each	1	
3			P - Dump Bailer (2 sxs Cement)	per run	1	
4		2500'	P - Plug or Retainer - setting (3rd party)	each	1	
5			P - Dump Bailer (2 sxs Cement)	per run	1	
6			P - Radial Cement Bond Log (2000'-6000')	each	1	
7	150-151'		P - Squeeze Gun - 1st Gun	each	1	
8						
9						
10						
11						
12						
13						
14						
15						
16						
17						
18						
19						
20						
21						
22						
23						
24						
			STANDARD PRICING			
Runs for this job 6			CIBP & 2SX CMT 6443'		TO	
			CIBP & 2SX CMT 2500'		TO	
			CBL3500'-surface; 1-SqzGun		TOTAL DIS	
			ESTIMATED TOTAL C			
THE SERVICE(S) AND/OR EQUIPMENT COVERED BY THIS SERVICE ORDER HAVE BEEN PERFORMED OR RECEIVED AS SET FORTH ABOVE SIGNATURE OF CUSTOMER OR AUTHORIZED REPRESENTATIVE: MATT MCGRAW LOGS RECEIVED AT WELL: CUST. INITIALS: SIGNATURE OF SUREFIRE WIRELINE ENGINEER: Schuman, Shawn						
CASING/TUBING RECORD						
SIZE	WEIGHT	TYPE	FROM	TO	PERM. DEPTH DATUM	GROUND LEVEL
4 1/2		Casing 1			LOG MEAS. FROM	ELEV. ABOVE PERM DATUM
		Casing 2			WHICH IS	D.F. G.L.
		Tubing			Fluid Type	Fluid Weight
		Liner			lbs/gal	feet
		Drill Pipe			REMARKS	
					Bottom Hole Temperature	
					Degrees F	
SUREFIRE ENGINEER NAMES		WORK WITNESSED BY NAME				
Schuman, Shawn		Crew 1		MATT MCGRAW		
SUREFIRE OPERATORS		Crew 2				
Redfearn, Jeremiah		Crew 3				
Carlson, Ben		Crew 4				
		Crew 5				
		Crew 6				
				Type of Job: Vertical P and A		
				Class: Vert. Domestic		
				District job is in: Kersey, CO		
				AFE#:		
				Engineer: Schuman, Shawn		
				MSA#:		