



SRC Energy

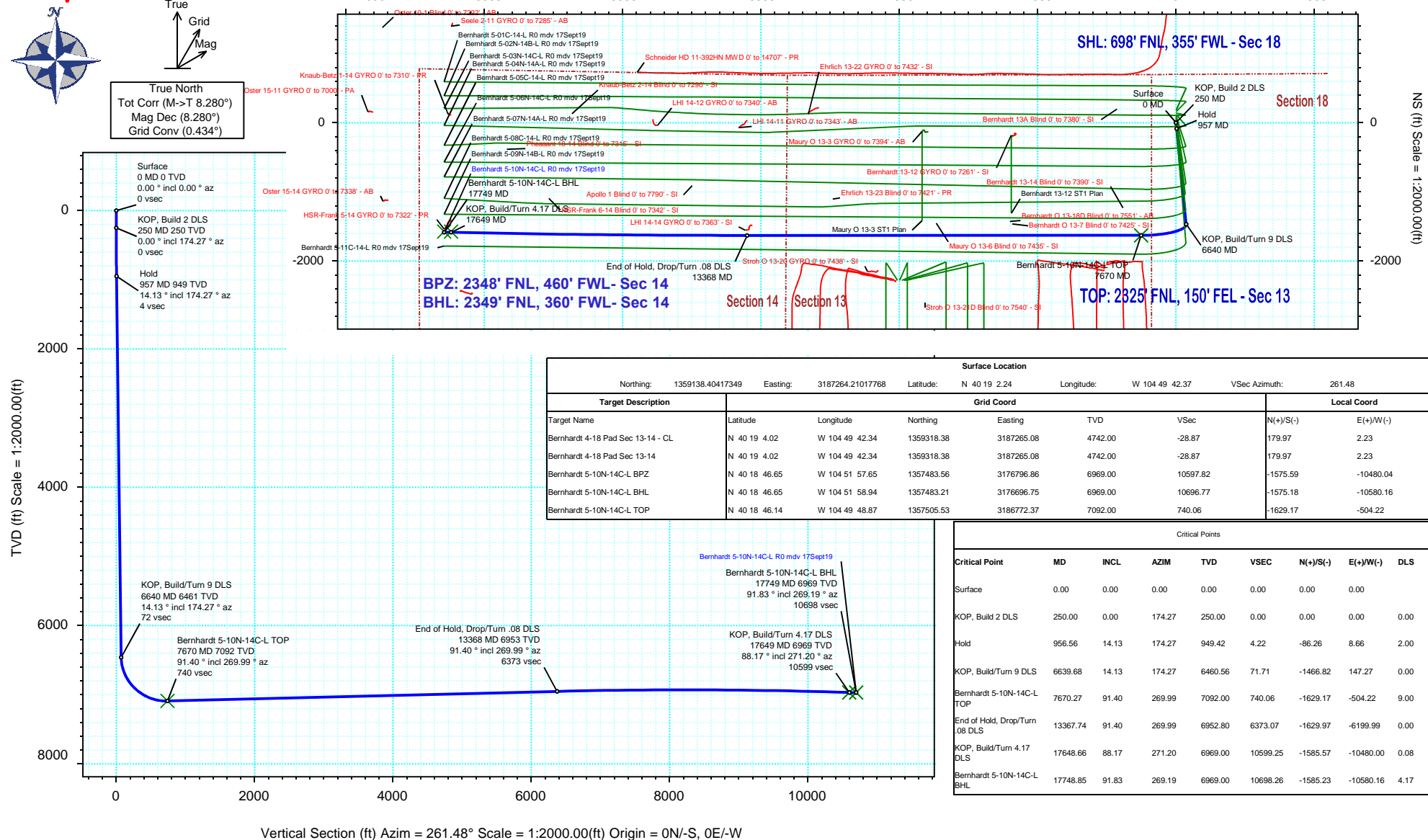
Rev 0

Schlumberger

Borehole:	Well:	Field:	Structure:
Original Hole	Bernhardt 5-10N-14C-L	CO, Weld County (NAD 83 NZ) - SRC	SRC Energy 18-04N-66W (Bernhardt 4-18 Pad)

Gravity & Magnetic Parameters				Surface Location				Miscellaneous			
Model:	HDGM 2019	Dip:	66.673°	Date:	17-Sep-2019	Lat:	N 40 19 2.24	Northing:	1359138.4ftUS	Grid Conv:	0.4339°
MagDec:	8.28°	FS:	52145.16nT	Gravity FS:	999.023mgm (9.80665 Based)	Lon:	W 104 49 42.37	Easting:	3187264.21ftUS	Scale Fact:	0.99995752
								Plan: Bernhardt 5-10N-14C-L R0 mdy 17Sept19			

Proposal





Bernhardt 5-10N-14C-L R0 mdv 17Sept19 Proposal Geodetic Report

(Def Plan)

Report Date: September 23, 2019 - 02:37 PM
Client: SRC Energy
Field: CO, Weld County (NAD 83 NZ) - SRC
Structure / Slot: SRC Energy 18-04N-66W (Bernhardt 4-18 Pad) / Bernhardt 5-10N-14C-L
Well: Bernhardt 5-10N-14C-L
Borehole: Original Hole
UWI / API#: Unknown / Unknown
Survey Name: Bernhardt 5-10N-14C-L R0 mdv 17Sept19
Survey Date: September 17, 2019
Tort / AHD / DDI / ERD Ratio: 114.515 ° / 12250.678 ft / 6.545 / 1.727
Coordinate Reference System: NAD83 Colorado State Plane, Northern Zone, US Feet
Location Lat / Long: N 40° 19' 2.24040", W 104° 49' 42.36600"
Location Grid N/E Y/X: N 1359138.404 ftUS, E 3187264.210 ftUS
CRS Grid Convergence Angle: 0.4339 °
Grid Scale Factor: 0.99995752
Version / Patch: 2.10.782.0

Survey / DLS Computation: Minimum Curvature / Lubinski
Vertical Section Azimuth: 261.479 ° (True North)
Vertical Section Origin: 0.000 ft, 0.000 ft
TVD Reference Datum: KB 4ft
TVD Reference Elevation: 4742.000 ft above MSL
Seabed / Ground Elevation: 4738.000 ft above MSL
Magnetic Declination: 8.280 °
Total Gravity Field Strength: 999.0229mgn (9.80665 Based)
Gravity Model: GARM
Total Magnetic Field Strength: 52145.160 nT
Magnetic Dip Angle: 66.673 °
Declination Date: September 17, 2019
Magnetic Declination Model: HDGM 2019
North Reference: True North
Grid Convergence Used: 0.0000 °
Total Corr Mag North->True North: 8.2804 °
Local Coord Referenced To: Well Head

Comments	MD (ft)	Incl (°)	Azim True (°)	TVD (ft)	VSEC (ft)	NS (ft)	EW (ft)	DLS (°/100ft)	Northing (ftUS)	Easting (ftUS)	Latitude (°)	Longitude (°)
Surface	0.00	0.00	0.00	0.00	0.00	0.00	0.00	N/A	1359138.40	3187264.21	40.317289	-104.828435
	100.00	0.00	174.27	100.00	0.00	0.00	0.00	0.00	1359138.40	3187264.21	40.317289	-104.828435
	200.00	0.00	174.27	200.00	0.00	0.00	0.00	0.00	1359138.40	3187264.21	40.317289	-104.828435
KOP, Build 2 DLS	250.00	0.00	174.27	250.00	0.00	0.00	0.00	0.00	1359138.40	3187264.21	40.317289	-104.828435
	300.00	1.00	174.27	300.00	0.02	-0.43	0.04	2.00	1359137.97	3187264.26	40.317288	-104.828435
	400.00	3.00	174.27	399.93	0.19	-3.91	0.39	2.00	1359134.50	3187264.63	40.317278	-104.828434
	500.00	5.00	174.27	499.68	0.53	-10.85	1.09	2.00	1359127.57	3187265.38	40.317259	-104.828431
	600.00	7.00	174.27	599.13	1.04	-21.25	2.13	2.00	1359117.17	3187266.50	40.317231	-104.828427
	700.00	9.00	174.27	698.15	1.72	-35.09	3.52	2.00	1359103.34	3187268.00	40.317193	-104.828422
	800.00	11.00	174.27	796.63	2.56	-52.37	5.26	2.00	1359086.08	3187269.86	40.317145	-104.828416
	900.00	13.00	174.27	894.44	3.57	-73.06	7.33	2.00	1359065.41	3187272.10	40.317088	-104.828409
Hold	956.56	14.13	174.27	949.42	4.22	-86.26	8.66	2.00	1359052.22	3187273.52	40.317052	-104.828404
	1000.00	14.13	174.27	991.54	4.73	-96.81	9.72	0.00	1359041.68	3187274.66	40.317023	-104.828400
	1100.00	14.13	174.27	1088.52	5.92	-121.10	12.16	0.00	1359017.40	3187277.28	40.316957	-104.828391
	1200.00	14.13	174.27	1185.49	7.11	-145.39	14.60	0.00	1358993.13	3187279.91	40.316890	-104.828383
	1300.00	14.13	174.27	1282.47	8.30	-169.69	17.04	0.00	1358968.86	3187282.53	40.316823	-104.828374
	1400.00	14.13	174.27	1379.44	9.48	-193.98	19.48	0.00	1358944.59	3187285.15	40.316757	-104.828365
	1500.00	14.13	174.27	1476.41	10.67	-218.27	21.91	0.00	1358920.32	3187287.78	40.316690	-104.828356
	1600.00	14.13	174.27	1573.39	11.86	-242.56	24.35	0.00	1358896.04	3187290.40	40.316623	-104.828348
	1700.00	14.13	174.27	1670.36	13.05	-266.86	26.79	0.00	1358871.77	3187293.02	40.316556	-104.828339
	1800.00	14.13	174.27	1767.34	14.23	-291.15	29.23	0.00	1358847.50	3187295.64	40.316490	-104.828330
	1900.00	14.13	174.27	1864.31	15.42	-315.44	31.67	0.00	1358823.23	3187298.27	40.316423	-104.828321
	2000.00	14.13	174.27	1961.28	16.61	-339.73	34.11	0.00	1358798.95	3187300.89	40.316356	-104.828313
	2100.00	14.13	174.27	2058.26	17.80	-364.02	36.55	0.00	1358774.68	3187303.51	40.316290	-104.828304
	2200.00	14.13	174.27	2155.23	18.98	-388.32	38.99	0.00	1358750.41	3187306.13	40.316223	-104.828295
	2300.00	14.13	174.27	2252.20	20.17	-412.61	41.43	0.00	1358726.14	3187308.76	40.316156	-104.828286
	2400.00	14.13	174.27	2349.18	21.36	-436.90	43.86	0.00	1358701.87	3187311.38	40.316090	-104.828278
	2500.00	14.13	174.27	2446.15	22.55	-461.19	46.30	0.00	1358677.59	3187314.00	40.316023	-104.828269
	2600.00	14.13	174.27	2543.13	23.73	-485.49	48.74	0.00	1358653.32	3187316.63	40.315956	-104.828260
	2700.00	14.13	174.27	2640.10	24.92	-509.78	51.18	0.00	1358629.05	3187319.25	40.315890	-104.828251
	2800.00	14.13	174.27	2737.07	26.11	-534.07	53.62	0.00	1358604.78	3187321.87	40.315823	-104.828243
	2900.00	14.13	174.27	2834.05	27.30	-558.36	56.06	0.00	1358580.51	3187324.49	40.315756	-104.828234
	3000.00	14.13	174.27	2931.02	28.48	-582.66	58.50	0.00	1358556.23	3187327.12	40.315690	-104.828225
	3100.00	14.13	174.27	3028.00	29.67	-606.95	60.94	0.00	1358531.96	3187329.74	40.315623	-104.828216
	3200.00	14.13	174.27	3124.97	30.86	-631.24	63.38	0.00	1358507.69	3187332.36	40.315556	-104.828208
	3300.00	14.13	174.27	3221.94	32.05	-655.53	65.81	0.00	1358483.42	3187334.98	40.315490	-104.828199
	3400.00	14.13	174.27	3318.92	33.23	-679.82	68.25	0.00	1358459.15	3187337.61	40.315423	-104.828190
	3500.00	14.13	174.27	3415.89	34.42	-704.12	70.69	0.00	1358434.87	3187340.23	40.315356	-104.828182
	3600.00	14.13	174.27	3512.87	35.61	-728.41	73.13	0.00	1358410.60	3187342.85	40.315290	-104.828173
	3700.00	14.13	174.27	3609.84	36.80	-752.70	75.57	0.00	1358386.33	3187345.48	40.315223	-104.828164
	3800.00	14.13	174.27	3706.81	37.98	-776.99	78.01	0.00	1358362.06	3187348.10	40.315156	-104.828155
	3900.00	14.13	174.27	3803.79	39.17	-801.29	80.45	0.00	1358337.79	3187350.72	40.315090	-104.828147
	4000.00	14.13	174.27	3900.76	40.36	-825.58	82.89	0.00	1358313.51	3187353.34	40.315023	-104.828138
	4100.00	14.13	174.27	3997.73	41.55	-849.87	85.33	0.00	1358289.24	3187355.97	40.314956	-104.828129
	4200.00	14.13	174.27	4094.71	42.73	-874.16	87.77	0.00	1358264.97	3187358.59	40.314889	-104.828120
	4300.00	14.13	174.27	4191.68	43.92	-898.45	90.20	0.00	1358240.70	3187361.21	40.314823	-104.828112
	4400.00	14.13	174.27	4288.66	45.11	-922.75	92.64	0.00	1358216.43	3187363.83	40.314756	-104.828103
	4500.00	14.13	174.27	4385.63	46.30	-947.04	95.08	0.00	1358192.15	3187366.46	40.314689	-104.828094
	4600.00	14.13	174.27	4482.60	47.48	-971.33	97.52	0.00	1358167.88	3187369.08	40.314623	-104.828085
	4700.00	14.13	174.27	4579.58	48.67	-995.62	99.96	0.00	1358143.61	3187371.70	40.314556	-104.828077
	4800.00	14.13	174.27	4676.55	49.86	-1019.92	102.40	0.00	1358119.34	3187374.33	40.314489	-104.828068
	4900.00	14.13	174.27	4773.53	51.05	-1044.21	104.84	0.00	1358095.07	3187376.95	40.314423	-104.828059
	5000.00	14.13	174.27	4870.50	52.23	-1068.50	107.28	0.00	1358070.79	3187379.57	40.314356	-104.828050
	5100.00	14.13	174.27	4967.47	53.42	-1092.79	109.72	0.00	1358046.52	3187382.19	40.314289	-104.828042
	5200.00	14.13	174.27	5064.45	54.61	-1117.08	112.15	0.00	1358022.25	3187384.82	40.314223	-104.828033
	5300.00	14.13	174.27	5161.42	55.80	-1141.38	114.59	0.00	1357997.98	3187387.44	40.314156	-104.828024
	5400.00	14.13	174.27	5258.40	56.98	-1165.67	117.03	0.00	1357973.71	3187390.06	40.314089	-104.828015
	5500.00	14.13	174.27	5355.37	58.17	-1189.96	119.47	0.00	1357949.43	3187392.68	40.314023	-104.828007
	5600.00	14.13	174.27	5452.34	59.36	-1214.25	121.91	0.00	1357925.16	3187395.31	40.313956	-104.827998
	5700.00	14.13	174.27	5549.32	60.55	-1238.55	124.35	0.00	1357900.89	3187397.93	40.313889	-104.827989
	5800.00	14.13	174.27	5646.29	61.73	-1262.84	126.79	0.00	1357876.62	3187400.55	40.313823	-104.827980
	5900.00	14.13	174.27	5743.27	62.92	-1287.13	129.23	0.00	1357852.35	3187403.18	40.313756	-104.827972
	6000.00	14.13	174.27	5840.24	64.11	-1311.42	131.67	0.00	1357828.07	3187405.80	40.313689	-104.827963
	6100.00	14.13	174.27	5937.21	65.30	-1335.72	134.10	0.00	1357803.80	3187408.42	40.313623	-104.827954
	6200.00	14.13	174.27	6034.19	66.48	-1360.01	136.54	0.00	1357779.53	3187411.04	40.313556	-104.827945
	6300.00	14.13	174.27	6131.16	67.67	-1384.30	138.98	0.00	1357755.26	3187413.67	40.313489	-104.827937
	6400.00	14.13	174.27	6228.13	68.86	-1408.59	141.42	0.00	1357730.99	3187416.29	40.313422	-104.827928
	6500.00	14.13	174.27	6325.11	70.05	-1432.88	143.86	0.00	1357706.71	3187418.91	40.313356	-104.827919
	6600.00	14.13	174.27	6422.08	71.23	-1457.18	146.30	0.00	1357682.44	3187421.53	40.313289	-104.827910
KOP, Build/Turn 9 DLS	6639.68	14.13	174.27	6460.56	71.71	-1466.82	147.27	0.00	1357672.81	3187422.57	40.313263	-104.827907
	6700.00	14.65	196.14	6519.03	75.25	-1481.48	145.88	9.00	1357658.14	3187421.30	40.313222	-104.827912
	6800.00	19.15	223.43	6614.84	93.48	-1505.59	131.06	9.00	1357633.92	3187406.66	40.313156	-104.827965
	6900.00	26.02	238.75	6707.19	126.70	-1528.93	100.97	9.00	1357610.35	3187376.75	40.313092	-104.828073
	7000.00	33.86	247.70	6793.82	174.08	-1550.92	56.35	9.00	1357588.02	3187332.30	40.313032	-104.828233

Comments	MD (ft)	Incl (°)	Azim True (°)	TVD (ft)	VSEC (ft)	NS (ft)	EW (ft)	DLS (°/100ft)	Northing (ftUS)	Easting (ftUS)	Latitude (°)	Longitude (°)
Bernhardt 5-10N-14C-L TOP	7200.00	50.59	257.76	6941.56	306.39	-1588.76	-71.76	9.00	1357549.22	3187204.48	40.312928	-104.828692
	7300.00	59.18	261.04	6999.04	388.04	-1603.67	-152.10	9.00	1357533.70	3187124.27	40.312887	-104.828980
	7400.00	67.84	263.78	7043.61	477.44	-1615.39	-240.73	9.00	1357521.31	3187035.73	40.312855	-104.829298
	7500.00	76.54	266.20	7074.16	572.36	-1623.65	-335.48	9.00	1357512.34	3186941.05	40.312832	-104.829638
	7600.00	85.27	268.45	7089.96	670.49	-1628.22	-434.02	9.00	1357507.01	3186842.56	40.312820	-104.829991
	7670.27	91.40	269.99	7092.00	740.06	-1629.17	-504.22	9.00	1357505.53	3186772.37	40.312817	-104.830243
	7700.00	91.40	269.99	7091.27	769.45	-1629.18	-533.94	0.00	1357505.30	3186742.65	40.312817	-104.830350
	7800.00	91.40	269.99	7088.83	868.32	-1629.19	-633.91	0.00	1357504.53	3186642.69	40.312817	-104.830708
	7900.00	91.40	269.99	7086.39	967.18	-1629.21	-733.88	0.00	1357503.76	3186542.73	40.312817	-104.831067
	8000.00	91.40	269.99	7083.94	1066.05	-1629.22	-833.85	0.00	1357502.99	3186442.76	40.312817	-104.831425
	8100.00	91.40	269.99	7081.50	1164.92	-1629.23	-933.82	0.00	1357502.22	3186342.80	40.312817	-104.831783
	8200.00	91.40	269.99	7079.06	1263.79	-1629.25	-1033.79	0.00	1357501.45	3186242.84	40.312817	-104.832142
	8300.00	91.40	269.99	7076.61	1362.66	-1629.26	-1133.76	0.00	1357500.68	3186142.88	40.312817	-104.832500
	8400.00	91.40	269.99	7074.17	1461.53	-1629.28	-1233.73	0.00	1357499.90	3186042.91	40.312817	-104.832859
	8500.00	91.40	269.99	7071.73	1560.40	-1629.29	-1333.70	0.00	1357499.13	3185942.95	40.312817	-104.833217
	8600.00	91.40	269.99	7069.28	1659.26	-1629.30	-1433.67	0.00	1357498.36	3185842.99	40.312817	-104.833576
	8700.00	91.40	269.99	7066.84	1758.13	-1629.32	-1533.64	0.00	1357497.59	3185743.02	40.312816	-104.833934
	8800.00	91.40	269.99	7064.40	1857.00	-1629.33	-1633.61	0.00	1357496.82	3185643.06	40.312816	-104.834293
	8900.00	91.40	269.99	7061.96	1955.87	-1629.35	-1733.58	0.00	1357496.05	3185543.10	40.312816	-104.834651
	9000.00	91.40	269.99	7059.51	2054.74	-1629.36	-1833.55	0.00	1357495.28	3185443.14	40.312816	-104.835010
	9100.00	91.40	269.99	7057.07	2153.61	-1629.37	-1933.52	0.00	1357494.51	3185343.17	40.312816	-104.835368
	9200.00	91.40	269.99	7054.63	2252.48	-1629.39	-2033.49	0.00	1357493.74	3185243.21	40.312816	-104.835727
	9300.00	91.40	269.99	7052.18	2351.35	-1629.40	-2133.46	0.00	1357492.96	3185143.25	40.312816	-104.836085
	9400.00	91.40	269.99	7049.74	2450.21	-1629.42	-2233.43	0.00	1357492.19	3185043.29	40.312816	-104.836444
	9500.00	91.40	269.99	7047.30	2549.08	-1629.43	-2333.40	0.00	1357491.42	3184943.32	40.312816	-104.836802
	9600.00	91.40	269.99	7044.85	2647.95	-1629.44	-2433.37	0.00	1357490.65	3184843.36	40.312816	-104.837160
	9700.00	91.40	269.99	7042.41	2746.82	-1629.46	-2533.34	0.00	1357489.88	3184743.40	40.312816	-104.837519
	9800.00	91.40	269.99	7039.97	2845.69	-1629.47	-2633.31	0.00	1357489.11	3184643.43	40.312816	-104.837877
	9900.00	91.40	269.99	7037.52	2944.56	-1629.49	-2733.28	0.00	1357488.34	3184543.47	40.312816	-104.838236
	10000.00	91.40	269.99	7035.08	3043.43	-1629.50	-2833.25	0.00	1357487.57	3184443.51	40.312816	-104.838594
	10100.00	91.40	269.99	7032.64	3142.29	-1629.51	-2933.22	0.00	1357486.80	3184343.55	40.312816	-104.838953
	10200.00	91.40	269.99	7030.19	3241.16	-1629.53	-3033.19	0.00	1357486.03	3184243.58	40.312816	-104.839311
	10300.00	91.40	269.99	7027.75	3340.03	-1629.54	-3133.16	0.00	1357485.25	3184143.62	40.312815	-104.839670
	10400.00	91.40	269.99	7025.31	3438.90	-1629.56	-3233.13	0.00	1357484.48	3184043.66	40.312815	-104.840028
	10500.00	91.40	269.99	7022.86	3537.77	-1629.57	-3333.10	0.00	1357483.71	3183943.70	40.312815	-104.840387
	10600.00	91.40	269.99	7020.42	3636.64	-1629.58	-3433.07	0.00	1357482.94	3183843.73	40.312815	-104.840745
	10700.00	91.40	269.99	7017.98	3735.51	-1629.60	-3533.04	0.00	1357482.17	3183743.77	40.312815	-104.841104
	10800.00	91.40	269.99	7015.53	3834.37	-1629.61	-3633.01	0.00	1357481.40	3183643.81	40.312815	-104.841462
	10900.00	91.40	269.99	7013.09	3933.24	-1629.63	-3732.98	0.00	1357480.63	3183543.84	40.312815	-104.841821
	11000.00	91.40	269.99	7010.65	4032.11	-1629.64	-3832.95	0.00	1357479.86	3183443.88	40.312815	-104.842179
11100.00	91.40	269.99	7008.20	4130.98	-1629.65	-3932.92	0.00	1357479.09	3183343.92	40.312815	-104.842538	
11200.00	91.40	269.99	7005.76	4229.85	-1629.67	-4032.89	0.00	1357478.32	3183243.96	40.312815	-104.842896	
11300.00	91.40	269.99	7003.32	4328.72	-1629.68	-4132.86	0.00	1357477.54	3183143.99	40.312815	-104.843254	
11400.00	91.40	269.99	7000.87	4427.59	-1629.70	-4232.83	0.00	1357476.77	3183044.03	40.312815	-104.843613	
11500.00	91.40	269.99	6998.43	4526.46	-1629.71	-4332.80	0.00	1357476.00	3182944.07	40.312815	-104.843971	
11600.00	91.40	269.99	6995.99	4625.32	-1629.72	-4432.77	0.00	1357475.23	3182844.11	40.312814	-104.844330	
11700.00	91.40	269.99	6993.54	4724.19	-1629.74	-4532.74	0.00	1357474.46	3182744.14	40.312814	-104.844688	
11800.00	91.40	269.99	6991.10	4823.06	-1629.75	-4632.71	0.00	1357473.69	3182644.18	40.312814	-104.845047	
11900.00	91.40	269.99	6988.66	4921.93	-1629.76	-4732.68	0.00	1357472.92	3182544.22	40.312814	-104.845405	
12000.00	91.40	269.99	6986.22	5020.80	-1629.78	-4832.65	0.00	1357472.15	3182444.25	40.312814	-104.845764	
12100.00	91.40	269.99	6983.77	5119.67	-1629.79	-4932.62	0.00	1357471.38	3182344.29	40.312814	-104.846122	
12200.00	91.40	269.99	6981.33	5218.54	-1629.81	-5032.59	0.00	1357470.61	3182244.33	40.312814	-104.846481	
12300.00	91.40	269.99	6978.89	5317.40	-1629.82	-5132.56	0.00	1357469.84	3182144.37	40.312814	-104.846839	
12400.00	91.40	269.99	6976.44	5416.27	-1629.83	-5232.53	0.00	1357469.07	3182044.40	40.312814	-104.847198	
12500.00	91.40	269.99	6974.00	5515.14	-1629.85	-5332.50	0.00	1357468.29	3181944.44	40.312814	-104.847556	
12600.00	91.40	269.99	6971.56	5614.01	-1629.86	-5432.47	0.00	1357467.52	3181844.48	40.312813	-104.847915	
12700.00	91.40	269.99	6969.11	5712.88	-1629.88	-5532.44	0.00	1357466.75	3181744.52	40.312813	-104.848273	
12800.00	91.40	269.99	6966.67	5811.75	-1629.89	-5632.41	0.00	1357465.98	3181644.55	40.312813	-104.848631	
12900.00	91.40	269.99	6964.23	5910.62	-1629.90	-5732.38	0.00	1357465.21	3181544.59	40.312813	-104.848990	
13000.00	91.40	269.99	6961.78	6009.48	-1629.92	-5832.35	0.00	1357464.44	3181444.63	40.312813	-104.849348	
13100.00	91.40	269.99	6959.34	6108.35	-1629.93	-5932.32	0.00	1357463.67	3181344.66	40.312813	-104.849707	
13200.00	91.40	269.99	6956.90	6207.22	-1629.95	-6032.29	0.00	1357462.90	3181244.70	40.312813	-104.850065	
13300.00	91.40	269.99	6954.45	6306.09	-1629.96	-6132.26	0.00	1357462.12	3181144.74	40.312813	-104.850424	
End of Hold, Drop/Turn .08 DLS	13367.74	91.40	269.99	6952.80	6373.07	-1629.97	-6199.99	0.00	1357461.60	3181077.02	40.312813	-104.850667
13400.00	91.38	270.00	6952.02	6404.96	-1629.97	-6232.23	0.08	1357461.36	3181044.78			

Comments	MD (ft)	Incl (°)	Azim True (°)	TVD (ft)	VSEC (ft)	NS (ft)	EW (ft)	DLS (°/100ft)	Northing (ftUS)	Easting (ftUS)	Latitude (°)	Longitude (°)
	17600.00	88.20	271.18	6967.46	10551.31	-1586.58	-10431.37	0.08	1357472.94	3176845.62	40.312928	-104.865839
KOP, Build/Turn 4.17 DLS	17648.66	88.17	271.20	6969.00	10599.25	-1585.57	-10480.00	0.08	1357473.59	3176796.98	40.312931	-104.866014
	17700.00	90.05	270.17	6969.80	10649.92	-1584.96	-10531.32	4.17	1357473.81	3176745.66	40.312932	-104.866198
Bernhardt 5-10N- 14C-L BHL	17748.85	91.83	269.19	6969.00	10698.26	-1585.23	-10580.16	4.17	1357473.17	3176696.83	40.312931	-104.866373

Survey Type: Def Plan

Survey Error Model: ISCWSA Rev 0 *** 3-D 95.000% Confidence 2.7955 sigma

Survey Program:

Description	Part	MD From (ft)	MD To (ft)	EOU Freq (ft)	Hole Size (in)	Casing Diameter (in)	Expected Max Inclination (deg)	Survey Tool Type	Borehole / Survey
	1	0.000	4.000	1/100.000	13.500	9.625		NAL_MWD_IFR1-Depth Only	Original Hole / Bernhardt 5-10N- 14C-L R0 mdv 17Sept19
	1	4.000	1800.000	1/100.000	13.500	9.625		NAL_MWD_IFR1	Original Hole / Bernhardt 5-10N- 14C-L R0 mdv 17Sept19
	1	1800.000	17748.850	1/100.000	8.500	5.500		NAL_MWD_IFR1+MS	Original Hole / Bernhardt 5-10N- 14C-L R0 mdv 17Sept19