



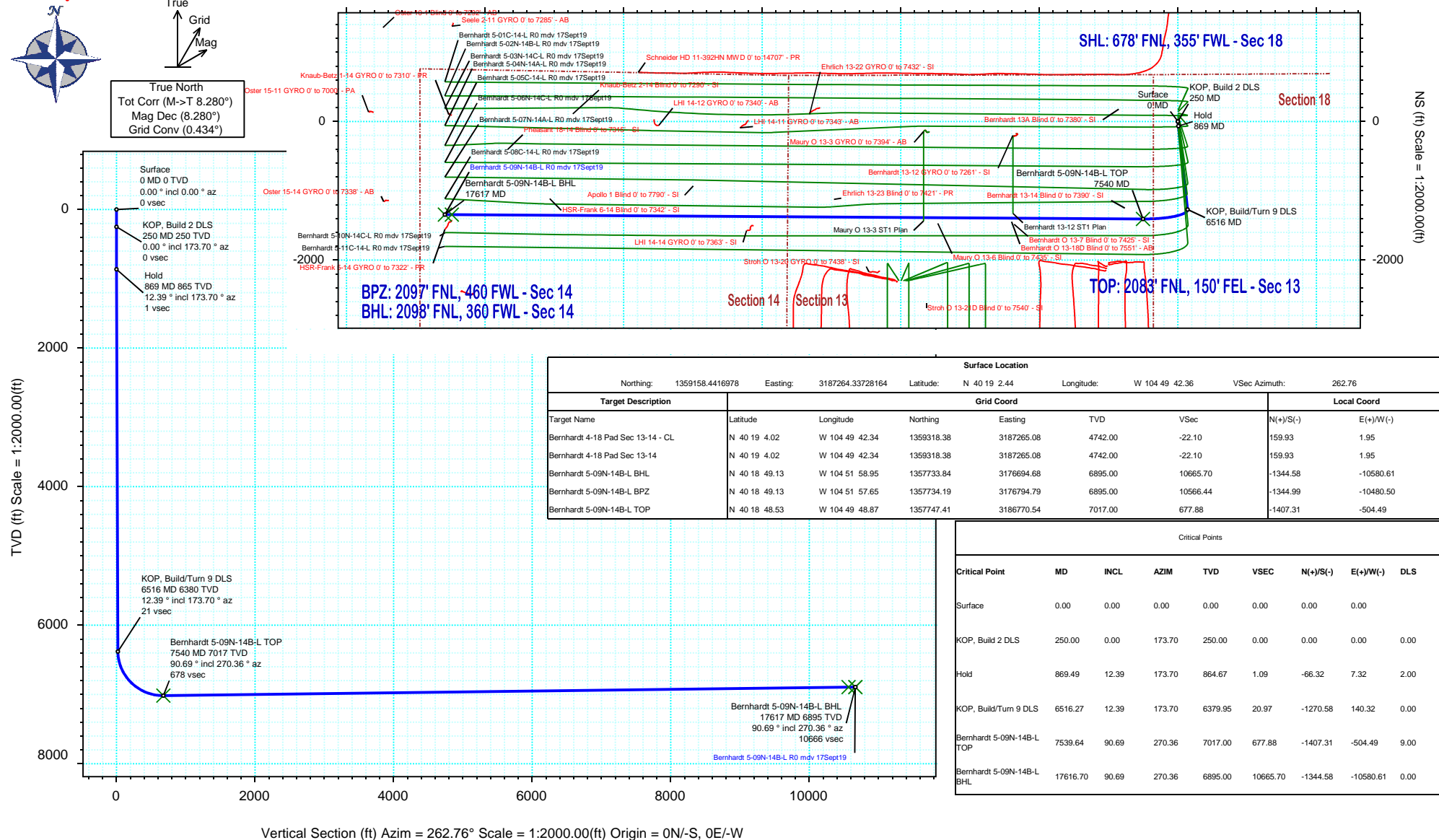
SRC Energy

Rev 0

Schlumberger

Borehole:				Well:				Field:				Structure:			
Original Hole				Bernhardt 5-09N-14B-L				CO, Weld County (NAD 83 NZ) - SRC				SRC Energy 18-04N-66W (Bernhardt 4-18 Pad)			
Gravity & Magnetic Parameters								Surface Location				Miscellaneous			
Model: HDGM 2019 Dip: 66.673° Date: 17-Sep-2019								NAD83 Colorado State Plane, Northern Zone, US Feet				Slot: Bernhardt 5-09N-14B-L TVD Ref: KB 4ft(4742ft above MSL)			
MagDec: 8.28° FS: 52145.183nT Gravity FS: 999.023mgn (9.80665 Based)								Lat: N 40 19 2.44 Northing: 1359158.44ftUS Grid Conv: 0.4339°				Plan: Bernhardt 5-09N-14B-L R0 mdv 17Sept19			
								Lon: W 104 49 42.36 Easting: 3187264.34ftUS Scale Fact: 0.99995752							

Proposal





Bernhardt 5-09N-14B-L R0 mdv 17Sept19 Proposal Geodetic Report

(Def Plan)

Report Date:	September 23, 2019 - 02:21 PM	Survey / DLS Computation:	Minimum Curvature / Lubinski
Client:	SRC Energy	Vertical Section Azimuth:	262.758 ° (True North)
Field:	CO, Weld County (NAD 83 NZ) - SRC	Vertical Section Origin:	0.000 ft, 0.000 ft
Structure / Slot:	SRC Energy 18-04N-66W (Bernhardt 4-18 Pad) / Bernhardt 5-09N-14B-L	TVD Reference Datum:	KB 4ft
Well:	Bernhardt 5-09N-14B-L	TVD Reference Elevation:	4742.000 ft above MSL
Borehole:	Original Hole	Seabed / Ground Elevation:	4738.000 ft above MSL
UWI / API#:	Unknown / Unknown	Magnetic Declination:	8.280 °
Survey Name:	Bernhardt 5-09N-14B-L R0 mdv 17Sept19	Total Gravity Field Strength:	999.0229mgn (9.80665 Based)
Survey Date:	September 17, 2019	Gravity Model:	GARM
Tort / AHD / DDI / ERD Ratio:	104.493 ° / 12038.101 ft / 6.499 / 1.716	Total Magnetic Field Strength:	52145.183 nT
Coordinate Reference System:	NAD83 Colorado State Plane, Northern Zone, US Feet	Magnetic Dip Angle:	66.673 °
Location Lat / Long:	N 40° 19' 2.43840", W 104° 49' 42.36240"	Declination Date:	September 17, 2019
Location Grid N/E Y/X:	N 1359158.442 ftUS, E 3187264.337 ftUS	Magnetic Declination Model:	HDGM 2019
CRS Grid Convergence Angle:	0.4339 °	North Reference:	True North
Grid Scale Factor:	0.99995752	Grid Convergence Used:	0.0000 °
Version / Patch:	2.10.782.0	Total Corr Mag North->True North:	8.2804 °
		Local Coord Referenced To:	Well Head

Comments	MD (ft)	Incl (°)	Azim True (°)	TVD (ft)	VSEC (ft)	NS (ft)	EW (ft)	DLS (°/100ft)	Northing (ftUS)	Easting (ftUS)	Latitude (°)	Longitude (°)
Surface	0.00	0.00	0.00	0.00	0.00	0.00	0.00	N/A	1359158.44	3187264.34	40.317344	-104.828434
	100.00	0.00	173.70	100.00	0.00	0.00	0.00	0.00	1359158.44	3187264.34	40.317344	-104.828434
	200.00	0.00	173.70	200.00	0.00	0.00	0.00	0.00	1359158.44	3187264.34	40.317344	-104.828434
KOP, Build 2 DLS	250.00	0.00	173.70	250.00	0.00	0.00	0.00	0.00	1359158.44	3187264.34	40.317344	-104.828434
	300.00	1.00	173.70	300.00	0.01	-0.43	0.05	2.00	1359158.01	3187264.39	40.317343	-104.828434
	400.00	3.00	173.70	399.93	0.06	-3.90	0.43	2.00	1359154.54	3187264.80	40.317333	-104.828432
	500.00	5.00	173.70	499.68	0.18	-10.84	1.20	2.00	1359147.62	3187265.62	40.317314	-104.828430
	600.00	7.00	173.70	599.13	0.35	-21.22	2.34	2.00	1359137.24	3187266.84	40.317286	-104.828426
	700.00	9.00	173.70	698.15	0.58	-35.06	3.87	2.00	1359123.42	3187268.47	40.317248	-104.828420
	800.00	11.00	173.70	796.63	0.86	-52.32	5.78	2.00	1359106.17	3187270.51	40.317200	-104.828413
Hold	869.49	12.39	173.70	864.67	1.09	-66.32	7.32	2.00	1359092.19	3187272.16	40.317162	-104.828408
	900.00	12.39	173.70	894.47	1.20	-72.82	8.04	0.00	1359085.68	3187272.93	40.317144	-104.828405
	1000.00	12.39	173.70	992.14	1.55	-94.15	10.40	0.00	1359064.38	3187275.45	40.317086	-104.828397
	1100.00	12.39	173.70	1089.81	1.91	-115.48	12.75	0.00	1359043.07	3187277.96	40.317027	-104.828388
	1200.00	12.39	173.70	1187.49	2.26	-136.80	15.11	0.00	1359021.76	3187280.48	40.316968	-104.828380
	1300.00	12.39	173.70	1285.16	2.61	-158.13	17.46	0.00	1359000.46	3187283.00	40.316910	-104.828371
	1400.00	12.39	173.70	1382.83	2.96	-179.46	19.82	0.00	1358979.15	3187285.51	40.316851	-104.828363
	1500.00	12.39	173.70	1480.50	3.31	-200.78	22.17	0.00	1358957.84	3187288.03	40.316793	-104.828354
	1600.00	12.39	173.70	1578.17	3.67	-222.11	24.53	0.00	1358936.54	3187290.55	40.316734	-104.828346
	1700.00	12.39	173.70	1675.84	4.02	-243.43	26.89	0.00	1358915.23	3187293.06	40.316676	-104.828338
	1800.00	12.39	173.70	1773.51	4.37	-264.76	29.24	0.00	1358893.92	3187295.58	40.316617	-104.828329
	1900.00	12.39	173.70	1871.18	4.72	-286.09	31.60	0.00	1358872.61	3187298.10	40.316559	-104.828321
	2000.00	12.39	173.70	1968.85	5.07	-307.41	33.95	0.00	1358851.31	3187300.61	40.316500	-104.828312
	2100.00	12.39	173.70	2066.53	5.43	-328.74	36.31	0.00	1358830.00	3187303.13	40.316442	-104.828304
	2200.00	12.39	173.70	2164.20	5.78	-350.07	38.66	0.00	1358808.69	3187305.65	40.316383	-104.828295
	2300.00	12.39	173.70	2261.87	6.13	-371.39	41.02	0.00	1358787.39	3187308.16	40.316325	-104.828287
	2400.00	12.39	173.70	2359.54	6.48	-392.72	43.37	0.00	1358766.08	3187310.68	40.316266	-104.828278
	2500.00	12.39	173.70	2457.21	6.83	-414.05	45.73	0.00	1358744.77	3187313.20	40.316207	-104.828270
	2600.00	12.39	173.70	2554.88	7.19	-435.37	48.08	0.00	1358723.46	3187315.71	40.316149	-104.828262
	2700.00	12.39	173.70	2652.55	7.54	-456.70	50.44	0.00	1358702.16	3187318.23	40.316090	-104.828253
	2800.00	12.39	173.70	2750.22	7.89	-478.03	52.79	0.00	1358680.85	3187320.75	40.316032	-104.828245
	2900.00	12.39	173.70	2847.89	8.24	-499.35	55.15	0.00	1358659.54	3187323.26	40.315973	-104.828236
	3000.00	12.39	173.70	2945.56	8.59	-520.68	57.50	0.00	1358638.24	3187325.78	40.315915	-104.828228
	3100.00	12.39	173.70	3043.24	8.95	-542.01	59.86	0.00	1358616.93	3187328.30	40.315856	-104.828219
	3200.00	12.39	173.70	3140.91	9.30	-563.33	62.21	0.00	1358595.62	3187330.81	40.315798	-104.828211
	3300.00	12.39	173.70	3238.58	9.65	-584.66	64.57	0.00	1358574.31	3187333.33	40.315739	-104.828202
	3400.00	12.39	173.70	3336.25	10.00	-605.99	66.93	0.00	1358553.01	3187335.85	40.315681	-104.828194
	3500.00	12.39	173.70	3433.92	10.35	-627.31	69.28	0.00	1358531.70	3187338.36	40.315622	-104.828186
	3600.00	12.39	173.70	3531.59	10.71	-648.64	71.64	0.00	1358510.39	3187340.88	40.315564	-104.828177
	3700.00	12.39	173.70	3629.26	11.06	-669.96	73.99	0.00	1358489.09	3187343.40	40.315505	-104.828169
	3800.00	12.39	173.70	3726.93	11.41	-691.29	76.35	0.00	1358467.78	3187345.91	40.315446	-104.828160
	3900.00	12.39	173.70	3824.60	11.76	-712.62	78.70	0.00	1358446.47	3187348.43	40.315388	-104.828152
	4000.00	12.39	173.70	3922.28	12.11	-733.94	81.06	0.00	1358425.17	3187350.95	40.315329	-104.828143
	4100.00	12.39	173.70	4019.95	12.47	-755.27	83.41	0.00	1358403.86	3187353.46	40.315271	-104.828135
	4200.00	12.39	173.70	4117.62	12.82	-776.60	85.77	0.00	1358382.55	3187355.98	40.315212	-104.828126
	4300.00	12.39	173.70	4215.29	13.17	-797.92	88.12	0.00	1358361.24	3187358.50	40.315154	-104.828118
	4400.00	12.39	173.70	4312.96	13.52	-819.25	90.48	0.00	1358339.94	3187361.01	40.315095	-104.828110
	4500.00	12.39	173.70	4410.63	13.87	-840.58	92.83	0.00	1358318.63	3187363.53	40.315037	-104.828101
	4600.00	12.39	173.70	4508.30	14.23	-861.90	95.19	0.00	1358297.32	3187366.05	40.314978	-104.828093
	4700.00	12.39	173.70	4605.97	14.58	-883.23	97.54	0.00	1358276.02	3187368.56	40.314920	-104.828084
	4800.00	12.39	173.70	4703.64	14.93	-904.56	99.90	0.00	1358254.71	3187371.08	40.314861	-104.828076
	4900.00	12.39	173.70	4801.31	15.28	-925.88	102.26	0.00	1358233.40	3187373.60	40.314803	-104.828067
	5000.00	12.39	173.70	4898.99	15.63	-947.21	104.61	0.00	1358212.09	3187376.11	40.314744	-104.828059
	5100.00	12.39	173.70	4996.66	15.99	-968.54	106.97	0.00	1358190.79	3187378.63	40.314685	-104.828050
	5200.00	12.39	173.70	5094.33	16.34	-989.86	109.32	0.00	1358169.48	3187381.15	40.314627	-104.828042
	5300.00	12.39	173.70	5192.00	16.69	-1011.19	111.68	0.00	1358148.17	3187383.66	40.314568	-104.828034
	5400.00	12.39	173.70	5289.67	17.04	-1032.51	114.03	0.00	1358126.87	3187386.18	40.314510	-104.828025
	5500.00	12.39	173.70	5387.34	17.39	-1053.84	116.39	0.00	1358105.56	3187388.70	40.314451	-104.828017
	5600.00	12.39	173.70	5485.01	17.75	-1075.17	118.74	0.00	1358084.25	3187391.21	40.314393	-104.828008
	5700.00	12.39	173.70	5582.68	18.10	-1096.49	121.10	0.00	1358062.94	3187393.73	40.314334	-104.828000
	5800.00	12.39	173.70	5680.35	18.45	-1117.82	123.45	0.00	1358041.64	3187396.25	40.314276	-104.827991
	5900.00	12.39	173.70	5778.03	18.80	-1139.15	125.81	0.00	1358020.33	3187398.76	40.314217	-104.827983
	6000.00	12.39	173.70	5875.70	19.15	-1160.47	128.16	0.00	1357999.02	3187401.28	40.314159	-104.827974
	6100.00	12.39	173.70	5973.37	19.51	-1181.80	130.52	0.00	1357977.72	3187403.80	40.314100	-104.827966
	6200.00	12.39	173.70	6071.04	19.86	-1203.13	132.87	0.00	1357956.41	3187406.31	40.314041	-104.827958
	6300.00	12.39	173.70	6168.71	20.21	-1224.45	135.23	0.00	1357935.10	3187408.83	40.313983	-104.827949
	6400.00	12.39	173.70	6266.38	20.56	-1245.78	137.59	0.00	1357913.80	3187411.35	40.313924	-104.827941
	6500.00	12.39	173.70	6364.05	20.91	-1267.11	139.94	0.00	1357892.49	3187413.86	40.313866	-104.827932
KOP, Build/Turn 9 DLS	6516.27	12.39	173.70	6379.95	20.97	-1270.58	140.32	0.00	1357889.02	3187414.27	40.313856	-104.827931
	6600.00	13.74	206.98	6461.62	26.72	-1288.39	136.79	9.00	1357871.18	3187410.88	40.313807	-104.827943
	6700.00	19.42	231.97	6557.54	47.73	-1309.26	118.27	9.00	1357850.17	3187392.51	40.313750	-104.828010
	6800.00	26.93	244.76	6649.46	83.62	-1329.20	84.62	9.00	1357829.98	3187359.02	40.313695	-104.828131
	6900.00	35.11	252.12	6735.12	133.53	-1347.73	36.67	9.00	1357811.09	3187311.21	40.313645	-104.828303
	7000.00	43.58	256.95	6812.40	196.21	-1364.38	-24.40	9.00	1357793.98	3187250.27	40.313599	-104.828521
	7100.00	52.20	260.46	6879.41	270.12	-1378.74	-97.09	9.00	1357779.07	3187177.70	40.313559	-104.828785

Comments	MD (ft)	Incl (°)	Azim True (°)	TVD (ft)	VSEC (ft)	NS (ft)	EW (ft)	DLS (°/100ft)	Northing (ftUS)	Easting (ftUS)	Latitude (°)	Longitude (°)
Bernhardt 5-09N-14B-L TOP	7200.00	60.90	263.23	6934.49	353.45	-1390.47	-179.60	9.00	1357766.72	3187095.28	40.313527	-104.829078
	7300.00	69.64	265.56	6976.29	444.15	-1399.27	-269.90	9.00	1357757.23	3187005.05	40.313503	-104.829402
	7400.00	78.42	267.64	7003.77	539.97	-1404.92	-365.78	9.00	1357750.85	3186909.23	40.313488	-104.829746
	7500.00	87.21	269.60	7016.27	638.56	-1407.30	-464.86	9.00	1357747.73	3186810.17	40.313481	-104.830101
	7539.64	90.69	270.36	7017.00	677.88	-1407.31	-504.49	9.00	1357747.41	3186770.54	40.313481	-104.830243
	7600.00	90.69	270.36	7016.27	737.70	-1406.94	-564.84	0.00	1357747.33	3186710.19	40.313482	-104.830459
	7700.00	90.69	270.36	7015.06	836.81	-1406.31	-664.83	0.00	1357747.20	3186610.20	40.313484	-104.830818
	7800.00	90.69	270.36	7013.85	935.93	-1405.69	-764.82	0.00	1357747.06	3186510.22	40.313485	-104.831176
	7900.00	90.69	270.36	7012.64	1035.04	-1405.07	-864.81	0.00	1357746.93	3186410.23	40.313487	-104.831535
	8000.00	90.69	270.36	7011.43	1134.16	-1404.45	-964.80	0.00	1357746.79	3186310.24	40.313489	-104.831894
	8100.00	90.69	270.36	7010.22	1233.27	-1403.82	-1064.79	0.00	1357746.66	3186210.25	40.313491	-104.832252
	8200.00	90.69	270.36	7009.01	1332.39	-1403.20	-1164.78	0.00	1357746.52	3186110.26	40.313492	-104.832611
	8300.00	90.69	270.36	7007.79	1431.50	-1402.58	-1264.78	0.00	1357746.39	3186010.28	40.313494	-104.832969
	8400.00	90.69	270.36	7006.58	1530.62	-1401.96	-1364.77	0.00	1357746.25	3185910.29	40.313496	-104.833328
	8500.00	90.69	270.36	7005.37	1629.73	-1401.33	-1464.76	0.00	1357746.12	3185810.30	40.313497	-104.833686
	8600.00	90.69	270.36	7004.16	1728.85	-1400.71	-1564.75	0.00	1357745.98	3185710.31	40.313499	-104.834045
	8700.00	90.69	270.36	7002.95	1827.96	-1400.09	-1664.74	0.00	1357745.85	3185610.32	40.313501	-104.834403
	8800.00	90.69	270.36	7001.74	1927.07	-1399.47	-1764.73	0.00	1357745.71	3185510.34	40.313502	-104.834762
	8900.00	90.69	270.36	7000.53	2026.19	-1398.84	-1864.72	0.00	1357745.58	3185410.35	40.313504	-104.835121
	9000.00	90.69	270.36	6999.32	2125.30	-1398.22	-1964.71	0.00	1357745.44	3185310.36	40.313506	-104.835479
	9100.00	90.69	270.36	6998.11	2224.42	-1397.60	-2064.70	0.00	1357745.31	3185210.37	40.313507	-104.835838
	9200.00	90.69	270.36	6996.90	2323.53	-1396.98	-2164.69	0.00	1357745.18	3185110.38	40.313509	-104.836196
	9300.00	90.69	270.36	6995.69	2422.65	-1396.35	-2264.68	0.00	1357745.04	3185010.39	40.313511	-104.836555
	9400.00	90.69	270.36	6994.48	2521.76	-1395.73	-2364.67	0.00	1357744.91	3184910.41	40.313512	-104.836913
	9500.00	90.69	270.36	6993.27	2620.88	-1395.11	-2464.66	0.00	1357744.77	3184810.42	40.313514	-104.837272
	9600.00	90.69	270.36	6992.06	2719.99	-1394.49	-2564.65	0.00	1357744.64	3184710.43	40.313516	-104.837630
	9700.00	90.69	270.36	6990.85	2819.11	-1393.86	-2664.65	0.00	1357744.50	3184610.44	40.313518	-104.837989
	9800.00	90.69	270.36	6989.63	2918.22	-1393.24	-2764.64	0.00	1357744.37	3184510.45	40.313519	-104.838347
	9900.00	90.69	270.36	6988.42	3017.33	-1392.62	-2864.63	0.00	1357744.23	3184410.47	40.313521	-104.838706
	10000.00	90.69	270.36	6987.21	3116.45	-1392.00	-2964.62	0.00	1357744.10	3184310.48	40.313523	-104.839065
	10100.00	90.69	270.36	6986.00	3215.56	-1391.37	-3064.61	0.00	1357743.96	3184210.49	40.313524	-104.839423
	10200.00	90.69	270.36	6984.79	3314.68	-1390.75	-3164.60	0.00	1357743.83	3184110.50	40.313526	-104.839782
	10300.00	90.69	270.36	6983.58	3413.79	-1390.13	-3264.59	0.00	1357743.69	3184010.51	40.313528	-104.840140
	10400.00	90.69	270.36	6982.37	3512.91	-1389.51	-3364.58	0.00	1357743.56	3183910.53	40.313529	-104.840499
	10500.00	90.69	270.36	6981.16	3612.02	-1388.88	-3464.57	0.00	1357743.42	3183810.54	40.313531	-104.840857
	10600.00	90.69	270.36	6979.95	3711.14	-1388.26	-3564.56	0.00	1357743.29	3183710.55	40.313533	-104.841216
	10700.00	90.69	270.36	6978.74	3810.25	-1387.64	-3664.55	0.00	1357743.15	3183610.56	40.313534	-104.841574
	10800.00	90.69	270.36	6977.53	3909.36	-1387.01	-3764.54	0.00	1357743.02	3183510.57	40.313536	-104.841933
	10900.00	90.69	270.36	6976.32	4008.48	-1386.39	-3864.53	0.00	1357742.88	3183410.58	40.313538	-104.842291
	11000.00	90.69	270.36	6975.11	4107.59	-1385.77	-3964.53	0.00	1357742.75	3183310.60	40.313539	-104.842650
11100.00	90.69	270.36	6973.90	4206.71	-1385.15	-4064.52	0.00	1357742.62	3183210.61	40.313541	-104.843009	
11200.00	90.69	270.36	6972.69	4305.82	-1384.52	-4164.51	0.00	1357742.48	3183110.62	40.313543	-104.843367	
11300.00	90.69	270.36	6971.47	4404.94	-1383.90	-4264.50	0.00	1357742.35	3183010.63	40.313544	-104.843726	
11400.00	90.69	270.36	6970.26	4504.05	-1383.28	-4364.49	0.00	1357742.21	3182910.64	40.313546	-104.844084	
11500.00	90.69	270.36	6969.05	4603.17	-1382.66	-4464.48	0.00	1357742.08	3182810.66	40.313548	-104.844443	
11600.00	90.69	270.36	6967.84	4702.28	-1382.03	-4564.47	0.00	1357741.94	3182710.67	40.313549	-104.844801	
11700.00	90.69	270.36	6966.63	4801.40	-1381.41	-4664.46	0.00	1357741.81	3182610.68	40.313551	-104.845160	
11800.00	90.69	270.36	6965.42	4900.51	-1380.79	-4764.45	0.00	1357741.67	3182510.69	40.313553	-104.845518	
11900.00	90.69	270.36	6964.21	4999.62	-1380.17	-4864.44	0.00	1357741.54	3182410.70	40.313554	-104.845877	
12000.00	90.69	270.36	6963.00	5098.74	-1379.54	-4964.43	0.00	1357741.40	3182310.72	40.313556	-104.846235	
12100.00	90.69	270.36	6961.79	5197.85	-1378.92	-5064.42	0.00	1357741.27	3182210.73	40.313558	-104.846594	
12200.00	90.69	270.36	6960.58	5296.97	-1378.30	-5164.41	0.00	1357741.13	3182110.74	40.313559	-104.846953	
12300.00	90.69	270.36	6959.37	5396.08	-1377.68	-5264.40	0.00	1357741.00	3182010.75	40.313561	-104.847311	
12400.00	90.69	270.36	6958.16	5495.20	-1377.05	-5364.40	0.00	1357740.86	3181910.76	40.313562	-104.847670	
12500.00	90.69	270.36	6956.95	5594.31	-1376.43	-5464.39	0.00	1357740.73	3181810.77	40.313564	-104.848028	
12600.00	90.69	270.36	6955.74	5693.43	-1375.81	-5564.38	0.00	1357740.59	3181710.79	40.313566	-104.848387	
12700.00	90.69	270.36	6954.53	5792.54	-1375.19	-5664.37	0.00	1357740.46	3181610.80	40.313567	-104.848745	
12800.00	90.69	270.36	6953.31	5891.66	-1374.56	-5764.36	0.00	1357740.32	3181510.81	40.313569	-104.849104	
12900.00	90.69	270.36	6952.10	5990.77	-1373.94	-5864.35	0.00	1357740.19	3181410.82	40.313571	-104.849462	
13000.00	90.69	270.36	6950.89	6089.88	-1373.32	-5964.34	0.00	1357740.06	3181310.83	40.313572	-104.849821	
13100.00	90.69	270.36	6949.68	6189.00	-1372.70	-6064.33	0.00	1357739.92	3181210.85	40.313574	-104.850179	
13200.00	90.69	270.36	6948.47	6288.11	-1372.07	-6164.32	0.00	1357739.79	3181110.86	40.313576	-104.850538	
13300.00	90.69	270.36	6947.26	6387.23	-1371.45	-6264.31	0.00	1357739.65	3181010.87	40.313577	-104.850897	
13400.00	90.69	270.36	6946.05	6486.34	-1370.83	-6364.30	0.00	1357739.52	3180910.88	40.313579	-104.851255	
13500.00	90.69	270.36	6944.84	6585.46	-1370.21	-6464.29	0.00	1357739.38	3180810.89	40.313581	-104.851614	
13600.00	90.69	270.36	6943.63	6684.57	-1369.58	-6564.28	0.00					

Comments	MD (ft)	Incl (°)	Azim True (°)	TVD (ft)	VSEC (ft)	NS (ft)	EW (ft)	DLS (°/100ft)	Northing (ftUS)	Easting (ftUS)	Latitude (°)	Longitude (°)
----------	------------	-------------	------------------	-------------	--------------	------------	------------	------------------	--------------------	-------------------	-----------------	------------------

Survey Type: Def Plan

Survey Error Model: ISCWSA Rev 0 *** 3-D 95.000% Confidence 2.7955 sigma
Survey Program:

Description	Part	MD From (ft)	MD To (ft)	EOU Freq (ft)	Hole Size (in)	Casing Diameter (in)	Expected Max Inclination (deg)	Survey Tool Type	Borehole / Survey
	1	0.000	4.000	1/100.000	13.500	9.625		NAL_MWD_IFR1-Depth Only	Original Hole / Bernhardt 5-09N-14B-L R0 mdv 17Sept19
	1	4.000	1800.000	1/100.000	13.500	9.625		NAL_MWD_IFR1	Original Hole / Bernhardt 5-09N-14B-L R0 mdv 17Sept19
	1	1800.000	17616.701	1/100.000	8.500	5.500		NAL_MWD_IFR1+MS	Original Hole / Bernhardt 5-09N-14B-L R0 mdv 17Sept19