



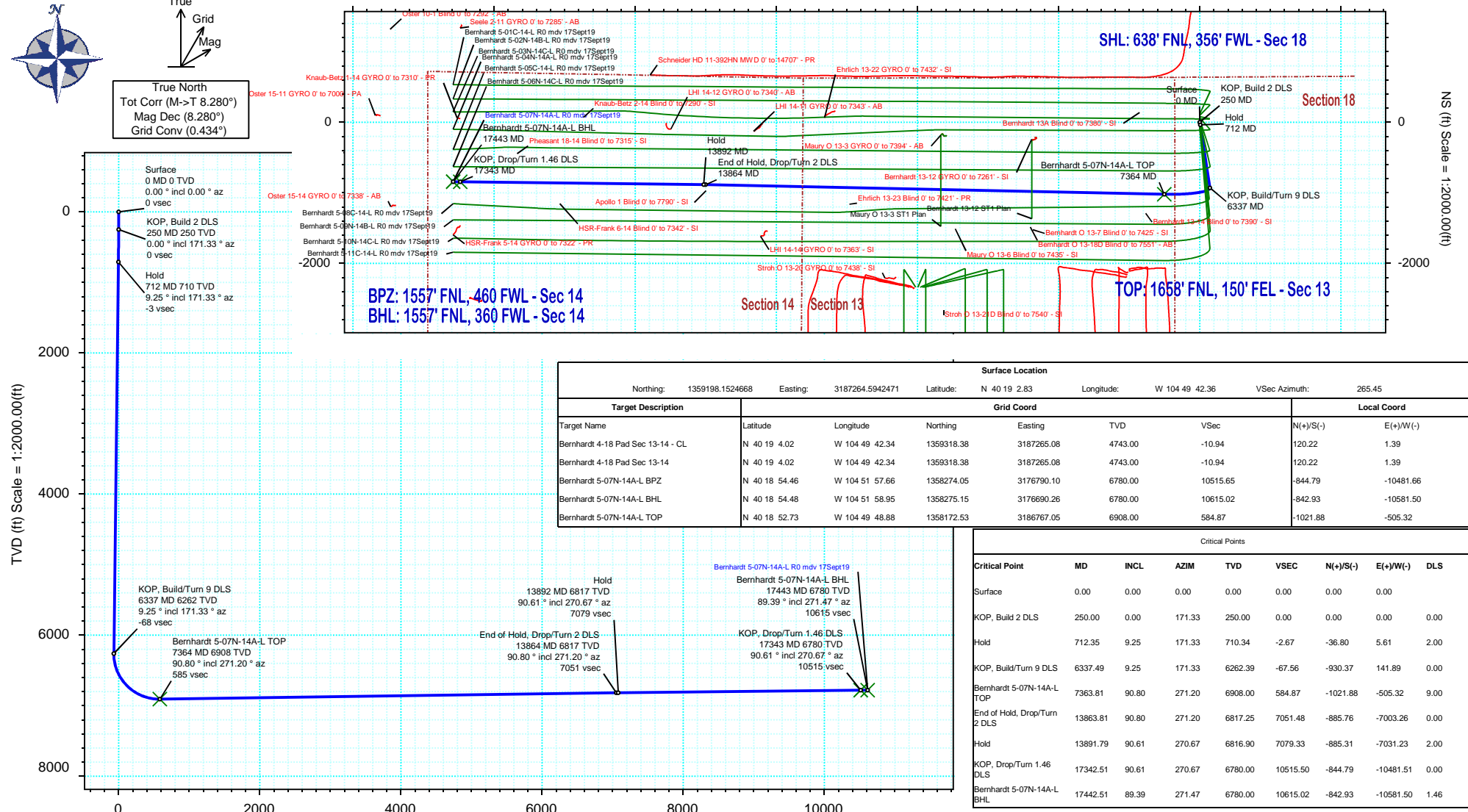
SRC Energy

Rev 0

Schlumberger

Borehole:				Well:				Field:				Structure:			
Original Hole				Bernhardt 5-07N-14A-L				CO, Weld County (NAD 83 NZ) - SRC				SRC Energy 18-04N-66W (Bernhardt 4-18 Pad)			
Gravity & Magnetic Parameters								Surface Location				Miscellaneous			
Model: HDGM 2019 Dip: 66.674° Date: 17-Sep-2019								NAD83 Colorado State Plane, Northern Zone, US Feet				Slot: Bernhardt 5-07N-14A-L TVD Ref: KB 4ft(4743ft above MSL)			
MagDec: 8.28° FS: 52145.219nT Gravity FS: 999.023mgn (9.80665 Based)								Lat: N 40 19 2.83 Northing: 1359198.15ftUS Grid Conv: 0.4339°				Plan: Bernhardt 5-07N-14A-L R0 mdv 17Sept19			
								Lon: W 104 49 42.36 Easting: 3187264.59ftUS Scale Fact: 0.99995752							

Proposal



Vertical Section (ft) Azim = 265.45° Scale = 1:2000.00(ft) Origin = 0N/-S, 0E/-W



Bernhardt 5-07N-14A-L R0 mdv 17Sept19 Proposal Geodetic Report

(Def Plan)

Report Date: September 23, 2019 - 01:36 PM
Client: SRC Energy
Field: CO, Weld County (NAD 83 NZ) - SRC
Structure / Slot: SRC Energy 18-04N-66W (Bernhardt 4-18 Pad) / Bernhardt 5-07N-14A-L
Well: Bernhardt 5-07N-14A-L
Borehole: Original Hole
UWI / API#: Unknown / Unknown
Survey Name: Bernhardt 5-07N-14A-L R0 mdv 17Sept19
Survey Date: September 17, 2019
Tort / AHD / DDI / ERD Ratio: 103.635 ° / 11689.336 ft / 6.486 / 1.692
Coordinate Reference System: NAD83 Colorado State Plane, Northern Zone, US Feet
Location Lat / Long: N 40° 19' 2.83080", W 104° 49' 42.35520"
Location Grid N/E Y/X: N 1359198.152 ftUS, E 3187264.594 ftUS
CRS Grid Convergence Angle: 0.4339 °
Grid Scale Factor: 0.99995752
Version / Patch: 2.10.782.0

Survey / DLS Computation: Minimum Curvature / Lubinski
Vertical Section Azimuth: 265.445 ° (True North)
Vertical Section Origin: 0.000 ft, 0.000 ft
TVD Reference Datum: KB 4ft
TVD Reference Elevation: 4743.000 ft above MSL
Seabed / Ground Elevation: 4738.000 ft above MSL
Magnetic Declination: 8.280 °
Total Gravity Field Strength: 999.0228mgn (9.80665 Based)
Gravity Model: GARM
Total Magnetic Field Strength: 52145.219 nT
Magnetic Dip Angle: 66.674 °
Declination Date: September 17, 2019
Magnetic Declination Model: HDGM 2019
North Reference: True North
Grid Convergence Used: 0.0000 °
Total Corr Mag North->True North: 8.2803 °
Local Coord Referenced To: Well Head

Comments	MD (ft)	Incl (°)	Azim True (°)	TVD (ft)	VSEC (ft)	NS (ft)	EW (ft)	DLS (°/100ft)	Northing (ftUS)	Easting (ftUS)	Latitude (°)	Longitude (°)
Surface	0.00	0.00	0.00	0.00	0.00	0.00	0.00	N/A	1359198.15	3187264.59	40.317453	-104.828432
	100.00	0.00	171.33	100.00	0.00	0.00	0.00	0.00	1359198.15	3187264.59	40.317453	-104.828432
	200.00	0.00	171.33	200.00	0.00	0.00	0.00	0.00	1359198.15	3187264.59	40.317453	-104.828432
KOP, Build 2 DLS	250.00	0.00	171.33	250.00	0.00	0.00	0.00	0.00	1359198.15	3187264.59	40.317453	-104.828432
	300.00	1.00	171.33	300.00	-0.03	-0.43	0.07	2.00	1359197.72	3187264.66	40.317452	-104.828432
	400.00	3.00	171.33	399.93	-0.28	-3.88	0.59	2.00	1359194.28	3187265.22	40.317442	-104.828430
	500.00	5.00	171.33	499.68	-0.78	-10.78	1.64	2.00	1359187.39	3187266.32	40.317423	-104.828426
	600.00	7.00	171.33	599.13	-1.53	-21.11	3.22	2.00	1359177.07	3187267.97	40.317395	-104.828420
	700.00	9.00	171.33	698.15	-2.53	-34.87	5.32	2.00	1359163.33	3187270.18	40.317357	-104.828413
Hold	712.35	9.25	171.33	710.34	-2.67	-36.80	5.61	2.00	1359161.40	3187270.49	40.317352	-104.828412
	800.00	9.25	171.33	796.86	-3.68	-50.73	7.74	0.00	1359147.49	3187272.71	40.317314	-104.828404
	900.00	9.25	171.33	895.56	-4.84	-66.61	10.16	0.00	1359131.62	3187275.26	40.317270	-104.828396
	1000.00	9.25	171.33	994.26	-5.99	-82.50	12.58	0.00	1359115.76	3187277.80	40.317227	-104.828387
	1100.00	9.25	171.33	1092.96	-7.14	-98.38	15.00	0.00	1359099.89	3187280.34	40.317183	-104.828378
	1200.00	9.25	171.33	1191.66	-8.30	-114.27	17.43	0.00	1359084.03	3187282.89	40.317139	-104.828370
	1300.00	9.25	171.33	1290.36	-9.45	-130.15	19.85	0.00	1359068.16	3187285.43	40.317096	-104.828361
	1400.00	9.25	171.33	1389.06	-10.61	-146.04	22.27	0.00	1359052.29	3187287.97	40.317052	-104.828352
	1500.00	9.25	171.33	1487.76	-11.76	-161.92	24.70	0.00	1359036.43	3187290.51	40.317009	-104.828343
	1600.00	9.25	171.33	1586.46	-12.91	-177.81	27.12	0.00	1359020.56	3187293.06	40.316965	-104.828335
	1700.00	9.25	171.33	1685.16	-14.07	-193.69	29.54	0.00	1359004.70	3187295.60	40.316921	-104.828326
	1800.00	9.25	171.33	1783.86	-15.22	-209.58	31.96	0.00	1358988.83	3187298.14	40.316878	-104.828317
	1900.00	9.25	171.33	1882.56	-16.37	-225.46	34.39	0.00	1358972.97	3187300.69	40.316834	-104.828309
	2000.00	9.25	171.33	1981.26	-17.53	-241.35	36.81	0.00	1358957.10	3187303.23	40.316791	-104.828300
	2100.00	9.25	171.33	2079.96	-18.68	-257.23	39.23	0.00	1358941.23	3187305.77	40.316747	-104.828291
	2200.00	9.25	171.33	2178.66	-19.83	-273.12	41.65	0.00	1358925.37	3187308.31	40.316703	-104.828283
	2300.00	9.25	171.33	2277.36	-20.99	-289.01	44.08	0.00	1358909.50	3187310.86	40.316660	-104.828274
	2400.00	9.25	171.33	2376.06	-22.14	-304.89	46.50	0.00	1358893.64	3187313.40	40.316616	-104.828265
	2500.00	9.25	171.33	2474.77	-23.30	-320.78	48.92	0.00	1358877.77	3187315.94	40.316572	-104.828257
	2600.00	9.25	171.33	2573.47	-24.45	-336.66	51.34	0.00	1358861.90	3187318.48	40.316529	-104.828248
	2700.00	9.25	171.33	2672.17	-25.60	-352.55	53.77	0.00	1358846.04	3187321.03	40.316485	-104.828239
	2800.00	9.25	171.33	2770.87	-26.76	-368.43	56.19	0.00	1358830.17	3187323.57	40.316442	-104.828231
	2900.00	9.25	171.33	2869.57	-27.91	-384.32	58.61	0.00	1358814.31	3187326.11	40.316398	-104.828222
	3000.00	9.25	171.33	2968.27	-29.06	-400.20	61.04	0.00	1358798.44	3187328.66	40.316354	-104.828213
	3100.00	9.25	171.33	3066.97	-30.22	-416.09	63.46	0.00	1358782.58	3187331.20	40.316311	-104.828204
	3200.00	9.25	171.33	3165.67	-31.37	-431.97	65.88	0.00	1358766.71	3187333.74	40.316267	-104.828196
	3300.00	9.25	171.33	3264.37	-32.52	-447.86	68.30	0.00	1358750.84	3187336.28	40.316224	-104.828187
	3400.00	9.25	171.33	3363.07	-33.68	-463.74	70.73	0.00	1358734.98	3187338.83	40.316180	-104.828178
	3500.00	9.25	171.33	3461.77	-34.83	-479.63	73.15	0.00	1358719.11	3187341.37	40.316136	-104.828170
	3600.00	9.25	171.33	3560.47	-35.98	-495.51	75.57	0.00	1358703.25	3187343.91	40.316093	-104.828161
	3700.00	9.25	171.33	3659.17	-37.14	-511.40	77.99	0.00	1358687.38	3187346.46	40.316049	-104.828152
	3800.00	9.25	171.33	3757.87	-38.29	-527.28	80.42	0.00	1358671.52	3187349.00	40.316006	-104.828144
	3900.00	9.25	171.33	3856.57	-39.45	-543.17	82.84	0.00	1358655.65	3187351.54	40.315962	-104.828135
	4000.00	9.25	171.33	3955.27	-40.60	-559.05	85.26	0.00	1358639.78	3187354.08	40.315918	-104.828126
	4100.00	9.25	171.33	4053.97	-41.75	-574.94	87.69	0.00	1358623.92	3187356.63	40.315875	-104.828118
	4200.00	9.25	171.33	4152.67	-42.91	-590.83	90.11	0.00	1358608.05	3187359.17	40.315831	-104.828109
	4300.00	9.25	171.33	4251.37	-44.06	-606.71	92.53	0.00	1358592.19	3187361.71	40.315788	-104.828100
	4400.00	9.25	171.33	4350.07	-45.21	-622.60	94.95	0.00	1358576.32	3187364.26	40.315744	-104.828092
	4500.00	9.25	171.33	4448.78	-46.37	-638.48	97.38	0.00	1358560.46	3187366.80	40.315700	-104.828083
	4600.00	9.25	171.33	4547.48	-47.52	-654.37	99.80	0.00	1358544.59	3187369.34	40.315657	-104.828074
	4700.00	9.25	171.33	4646.18	-48.67	-670.25	102.22	0.00	1358528.72	3187371.88	40.315613	-104.828065
	4800.00	9.25	171.33	4744.88	-49.83	-686.14	104.64	0.00	1358512.86	3187374.43	40.315570	-104.828057
	4900.00	9.25	171.33	4843.58	-50.98	-702.02	107.07	0.00	1358496.99	3187376.97	40.315526	-104.828048
	5000.00	9.25	171.33	4942.28	-52.14	-717.91	109.49	0.00	1358481.13	3187379.51	40.315482	-104.828039
	5100.00	9.25	171.33	5040.98	-53.29	-733.79	111.91	0.00	1358465.26	3187382.06	40.315439	-104.828031
	5200.00	9.25	171.33	5139.68	-54.44	-749.68	114.33	0.00	1358449.40	3187384.60	40.315395	-104.828022
	5300.00	9.25	171.33	5238.38	-55.60	-765.56	116.76	0.00	1358433.53	3187387.14	40.315352	-104.828013
	5400.00	9.25	171.33	5337.08	-56.75	-781.45	119.18	0.00	1358417.66	3187389.68	40.315308	-104.828005
	5500.00	9.25	171.33	5435.78	-57.90	-797.33	121.60	0.00	1358401.80	3187392.23	40.315264	-104.827996
	5600.00	9.25	171.33	5534.48	-59.06	-813.22	124.03	0.00	1358385.93	3187394.77	40.315221	-104.827987
	5700.00	9.25	171.33	5633.18	-60.21	-829.10	126.45	0.00	1358370.07	3187397.31	40.315177	-104.827979
	5800.00	9.25	171.33	5731.88	-61.36	-844.99	128.87	0.00	1358354.20	3187399.85	40.315134	-104.827970
	5900.00	9.25	171.33	5830.58	-62.52	-860.87	131.29	0.00	1358338.34	3187402.40	40.315090	-104.827961
	6000.00	9.25	171.33	5929.28	-63.67	-876.76	133.72	0.00	1358322.47	3187404.94	40.315046	-104.827953
	6100.00	9.25	171.33	6027.98	-64.82	-892.64	136.14	0.00	1358306.60	3187407.48	40.315003	-104.827944
	6200.00	9.25	171.33	6126.68	-65.98	-908.53	138.56	0.00	1358290.74	3187410.03	40.314959	-104.827935
	6300.00	9.25	171.33	6225.38	-67.13	-924.42	140.98	0.00	1358274.87	3187412.57	40.314916	-104.827926
KOP, Build/Turn 9 DLS	6337.49	9.25	171.33	6262.39	-67.56	-930.37	141.89	0.00	1358268.92	3187413.52	40.314899	-104.827923
	6400.00	9.98	205.24	6324.07	-65.23	-940.24	140.34	9.00	1358259.04	3187412.04	40.314872	-104.827929
	6500.00	15.89	236.76	6421.60	-48.89	-955.61	125.17	9.00	1358243.56	3187396.99	40.314830	-104.827983
	6600.00	23.79	249.73	6515.64	-17.40	-970.13	94.74	9.00	1358228.81	3187366.67	40.314790	-104.828092
	6700.00	32.25	256.34	6603.86	-28.45	-983.45	49.80	9.00	1358215.15	3187321.84	40.314753	-104.828253
	6800.00	40.92	260.40	6684.09	-87.54	-995.23	-8.53	9.00	1358202.93	3187263.60	40.314721	-104.828463
	6900.00	49.69	263.25	6754.36	-158.41	-1005.20	-78.83	9.00	1358192.43	3187193.38	40.314694	-104.828715
	7000.00	58.52	265.43	6812.94	-239.31	-1013.09	-159.37	9.00	1358183.93	3187112.91	40.314672	-104.829003
	7100.00	67.37	267.24	6858.38	-328.27							

Comments	MD (ft)	Incl (°)	Azim True (°)	TVD (ft)	VSEC (ft)	NS (ft)	EW (ft)	DLS (°/100ft)	Northing (ftUS)	Easting (ftUS)	Latitude (°)	Longitude (°)
Bernhardt 5-07N-14A-L TOP	7200.00	76.25	268.82	6889.57	423.07	-1021.95	-343.00	9.00	1358173.68	3186929.36	40.314648	-104.829662
	7300.00	85.13	270.29	6905.73	521.40	-1022.70	-441.58	9.00	1358172.18	3186830.79	40.314646	-104.830015
	7363.81	90.80	271.20	6908.00	584.87	-1021.88	-505.32	9.00	1358172.53	3186767.05	40.314648	-104.830244
	7400.00	90.80	271.20	6907.49	620.87	-1021.12	-541.50	0.00	1358173.01	3186730.87	40.314650	-104.830374
	7500.00	90.80	271.20	6906.10	720.36	-1019.02	-641.47	0.00	1358174.35	3186630.89	40.314656	-104.830732
	7600.00	90.80	271.20	6904.70	819.85	-1016.93	-741.43	0.00	1358175.68	3186530.92	40.314662	-104.831091
	7700.00	90.80	271.20	6903.31	919.33	-1014.84	-841.40	0.00	1358177.02	3186430.94	40.314667	-104.831449
	7800.00	90.80	271.20	6901.91	1018.82	-1012.74	-941.37	0.00	1358178.36	3186330.96	40.314673	-104.831808
	7900.00	90.80	271.20	6900.51	1118.30	-1010.65	-1041.34	0.00	1358179.69	3186230.99	40.314679	-104.832166
	8000.00	90.80	271.20	6899.12	1217.79	-1008.55	-1141.31	0.00	1358181.03	3186131.01	40.314685	-104.832525
	8100.00	90.80	271.20	6897.72	1317.28	-1006.46	-1241.28	0.00	1358182.37	3186031.03	40.314690	-104.832883
	8200.00	90.80	271.20	6896.32	1416.76	-1004.37	-1341.24	0.00	1358183.70	3185931.05	40.314696	-104.833242
	8300.00	90.80	271.20	6894.93	1516.25	-1002.27	-1441.21	0.00	1358185.04	3185831.08	40.314702	-104.833600
	8400.00	90.80	271.20	6893.53	1615.74	-1000.18	-1541.18	0.00	1358186.38	3185731.10	40.314707	-104.833958
	8500.00	90.80	271.20	6892.14	1715.22	-998.08	-1641.15	0.00	1358187.71	3185631.12	40.314713	-104.834317
	8600.00	90.80	271.20	6890.74	1814.71	-995.99	-1741.12	0.00	1358189.05	3185531.15	40.314719	-104.834675
	8700.00	90.80	271.20	6889.34	1914.20	-993.90	-1841.09	0.00	1358190.39	3185431.17	40.314725	-104.835034
	8800.00	90.80	271.20	6887.95	2013.68	-991.80	-1941.05	0.00	1358191.72	3185331.19	40.314730	-104.835392
	8900.00	90.80	271.20	6886.55	2113.17	-989.71	-2041.02	0.00	1358193.06	3185231.22	40.314736	-104.835751
	9000.00	90.80	271.20	6885.16	2212.65	-987.61	-2140.99	0.00	1358194.40	3185131.24	40.314742	-104.836109
	9100.00	90.80	271.20	6883.76	2312.14	-985.52	-2240.96	0.00	1358195.73	3185031.26	40.314748	-104.836468
	9200.00	90.80	271.20	6882.36	2411.63	-983.42	-2340.93	0.00	1358197.07	3184931.29	40.314753	-104.836826
	9300.00	90.80	271.20	6880.97	2511.11	-981.33	-2440.90	0.00	1358198.41	3184831.31	40.314759	-104.837185
	9400.00	90.80	271.20	6879.57	2610.60	-979.24	-2540.86	0.00	1358199.75	3184731.33	40.314765	-104.837543
	9500.00	90.80	271.20	6878.17	2710.09	-977.14	-2640.83	0.00	1358201.08	3184631.36	40.314770	-104.837902
	9600.00	90.80	271.20	6876.78	2809.57	-975.05	-2740.80	0.00	1358202.42	3184531.38	40.314776	-104.838260
	9700.00	90.80	271.20	6875.38	2909.06	-972.95	-2840.77	0.00	1358203.76	3184431.40	40.314782	-104.838619
	9800.00	90.80	271.20	6873.99	3008.55	-970.86	-2940.74	0.00	1358205.09	3184331.42	40.314788	-104.838977
	9900.00	90.80	271.20	6872.59	3108.03	-968.77	-3040.71	0.00	1358206.43	3184231.45	40.314793	-104.839336
	10000.00	90.80	271.20	6871.19	3207.52	-966.67	-3140.67	0.00	1358207.77	3184131.47	40.314799	-104.839694
	10100.00	90.80	271.20	6869.80	3307.00	-964.58	-3240.64	0.00	1358209.10	3184031.49	40.314805	-104.840053
	10200.00	90.80	271.20	6868.40	3406.49	-962.48	-3340.61	0.00	1358210.44	3183931.52	40.314810	-104.840411
	10300.00	90.80	271.20	6867.00	3505.98	-960.39	-3440.58	0.00	1358211.78	3183831.54	40.314816	-104.840769
	10400.00	90.80	271.20	6865.61	3605.46	-958.30	-3540.55	0.00	1358213.11	3183731.56	40.314822	-104.841128
	10500.00	90.80	271.20	6864.21	3704.95	-956.20	-3640.52	0.00	1358214.45	3183631.59	40.314828	-104.841486
	10600.00	90.80	271.20	6862.82	3804.44	-954.11	-3740.48	0.00	1358215.79	3183531.61	40.314833	-104.841845
	10700.00	90.80	271.20	6861.42	3903.92	-952.01	-3840.45	0.00	1358217.12	3183431.63	40.314839	-104.842203
	10800.00	90.80	271.20	6860.02	4003.41	-949.92	-3940.42	0.00	1358218.46	3183331.66	40.314845	-104.842562
	10900.00	90.80	271.20	6858.63	4102.90	-947.83	-4040.39	0.00	1358219.80	3183231.68	40.314850	-104.842920
	11000.00	90.80	271.20	6857.23	4202.38	-945.73	-4140.36	0.00	1358221.13	3183131.70	40.314856	-104.843279
	11100.00	90.80	271.20	6855.83	4301.87	-943.64	-4240.33	0.00	1358222.47	3183031.73	40.314862	-104.843637
	11200.00	90.80	271.20	6854.44	4401.35	-941.54	-4340.29	0.00	1358223.81	3182931.75	40.314867	-104.843996
	11300.00	90.80	271.20	6853.04	4500.84	-939.45	-4440.26	0.00	1358225.15	3182831.77	40.314873	-104.844354
	11400.00	90.80	271.20	6851.65	4600.33	-937.36	-4540.23	0.00	1358226.48	3182731.79	40.314879	-104.844713
	11500.00	90.80	271.20	6850.25	4699.81	-935.26	-4640.20	0.00	1358227.82	3182631.82	40.314885	-104.845071
	11600.00	90.80	271.20	6848.85	4799.30	-933.17	-4740.17	0.00	1358229.16	3182531.84	40.314890	-104.845430
	11700.00	90.80	271.20	6847.46	4898.79	-931.07	-4840.14	0.00	1358230.49	3182431.86	40.314896	-104.845788
	11800.00	90.80	271.20	6846.06	4998.27	-928.98	-4940.10	0.00	1358231.83	3182331.89	40.314902	-104.846147
	11900.00	90.80	271.20	6844.66	5097.76	-926.89	-5040.07	0.00	1358233.17	3182231.91	40.314907	-104.846505
	12000.00	90.80	271.20	6843.27	5197.25	-924.79	-5140.04	0.00	1358234.50	3182131.93	40.314913	-104.846864
	12100.00	90.80	271.20	6841.87	5296.73	-922.70	-5240.01	0.00	1358235.84	3182031.96	40.314919	-104.847222
	12200.00	90.80	271.20	6840.48	5396.22	-920.60	-5339.98	0.00	1358237.18	3181931.98	40.314924	-104.847580
	12300.00	90.80	271.20	6839.08	5495.70	-918.51	-5439.95	0.00	1358238.51	3181832.00	40.314930	-104.847939
	12400.00	90.80	271.20	6837.68	5595.19	-916.42	-5539.91	0.00	1358239.85	3181732.03	40.314936	-104.848297
	12500.00	90.80	271.20	6836.29	5694.68	-914.32	-5639.88	0.00	1358241.19	3181632.05	40.314941	-104.848656
	12600.00	90.80	271.20	6834.89	5794.16	-912.23	-5739.85	0.00	1358242.52	3181532.07	40.314947	-104.849014
	12700.00	90.80	271.20	6833.50	5893.65	-910.13	-5839.82	0.00	1358243.86	3181432.10	40.314953	-104.849373
	12800.00	90.80	271.20	6832.10	5993.14	-908.04	-5939.79	0.00	1358245.20	3181332.12	40.314959	-104.849731
	12900.00	90.80	271.20	6830.70	6092.62	-905.95	-6039.75	0.00	1358246.53	3181232.14	40.314964	-104.850090
	13000.00	90.80	271.20	6829.31	6192.11	-903.85	-6139.72	0.00	1358247.87	3181132.16	40.314970	-104.850448
	13100.00	90.80	271.20	6827.91	6291.60	-901.76	-6239.69	0.00	1358249.21	3181032.19	40.314976	-104.850807
	13200.00	90.80	271.20	6826.51	6391.08	-899.66	-6339.66	0.00	1358250.54	3180932.21	40.314981	-104.851165
	13300.00	90.80	271.20	6825.12	6490.57	-897.57	-6439.63	0.00	1358251.88	3180832.23	40.314987	-104.851524
	13400.00	90.80	271.20	6823.72	6590.05	-895.48	-6539.60	0.00	1358253.22	3180732.26	40.314993	-104.851882
	13500.00	90.80	271.20	6822.33	6689.54	-893.38	-6639.56	0.00	1358254.56	3180632.28	40.314998	-104.852241
	13600.00	90.80	271.20	6820.93	6789.03	-891.29	-6739.53	0.00	1358255.89	3180532.30	40.315004	-104.852599
	13700.00	90.80	271.20	6819.53	6888.51	-889.19	-6839.50	0.00	1358257.23	3180432.33	40.315010	-104.852958
	13800.00	90.80	271.20	6818.14	6988.00	-887.10	-6939.47	0.00	1358258.57	3180332.35	40.315015	-104.853316
End of Hold, Drop/Turn 2 DLS	13863.81	90.80	271.20	6817.25	7051.48	-885.76	-7003.26	0.00	1358259.42	3180268.55	40.315019	-104.853545
Hold	13891.79	90.61	270.67	6816.90	7079.33	-885.31	-7031.23	2.00	1358259.66	3180240.58	40.315020	-104.853645
	13900.00	90.61	270.67	6816.81	7087.51	-885.21	-7039.44	0.00	1358259.70	3180232.37	40.315020	-104.853675
	14000.00	90.61	270.67	6815.74	7187.08	-884.04	-7139.43	0.00	1358260.12	3180132.38	40.315024	-104.854033
	14100.00	90.61	270.67	6814.67	7286.66	-882.86	-7239.42	0.00	1358260.53	3180032.39	40.315027	-104.854392
	14200.00	90.61	270.67	6813.60	7386.24	-881.69	-7339.40	0.00	1358260.95	3179932.40	40.315030	-104.854750
	14300.00	90.61	270.67	6812.54	7485.82	-880.51	-7439.39	0.00	1358261.37	3179832.41	40.315033	-104.855109
	14400.00	90.61	270.67	6811.47	7585.40	-879.34	-7539.38	0.00	1358261.78	3179732.43	40.315036	-104.855467
	14500.00	90.61	270.67	6810.40	7684.98	-878.17	-7639.37	0.00	1358262.20			

Comments	MD (ft)	Incl (°)	Azim True (°)	TVD (ft)	VSEC (ft)	NS (ft)	EW (ft)	DLS (°/100ft)	Northing (ftUS)	Easting (ftUS)	Latitude (°)	Longitude (°)
KOP, Drop/Turn 1.46 DLS	17342.51	90.61	270.67	6780.00	10515.50	-844.79	-10481.51	0.00	1358274.04	3176790.24	40.315128	-104.866017
	17400.00	89.91	271.13	6779.74	10572.73	-843.89	-10539.00	1.46	1358274.51	3176732.76	40.315130	-104.866224
Bernhardt 5-07N- 14A-L BHL	17442.51	89.39	271.47	6780.00	10615.02	-842.93	-10581.50	1.46	1358275.15	3176690.26	40.315133	-104.866376

Survey Type: Def Plan

Survey Error Model: ISCWSA Rev 0 *** 3-D 95.000% Confidence 2.7955 sigma
Survey Program:

Description	Part	MD From (ft)	MD To (ft)	EOU Freq (ft)	Hole Size (in)	Casing Diameter (in)	Expected Max Inclination (deg)	Survey Tool Type	Borehole / Survey
	1	0.000	5.000	1/100.000	13.500	9.625		NAL_MWD_IFR1-Depth Only	Original Hole / Bernhardt 5-07N- 14A-L R0 mdv 17Sept19
	1	5.000	1800.000	1/100.000	13.500	9.625		NAL_MWD_IFR1	Original Hole / Bernhardt 5-07N- 14A-L R0 mdv 17Sept19
	1	1800.000	17442.508	1/100.000	8.500	5.500		NAL_MWD_IFR1+MS	Original Hole / Bernhardt 5-07N- 14A-L R0 mdv 17Sept19