



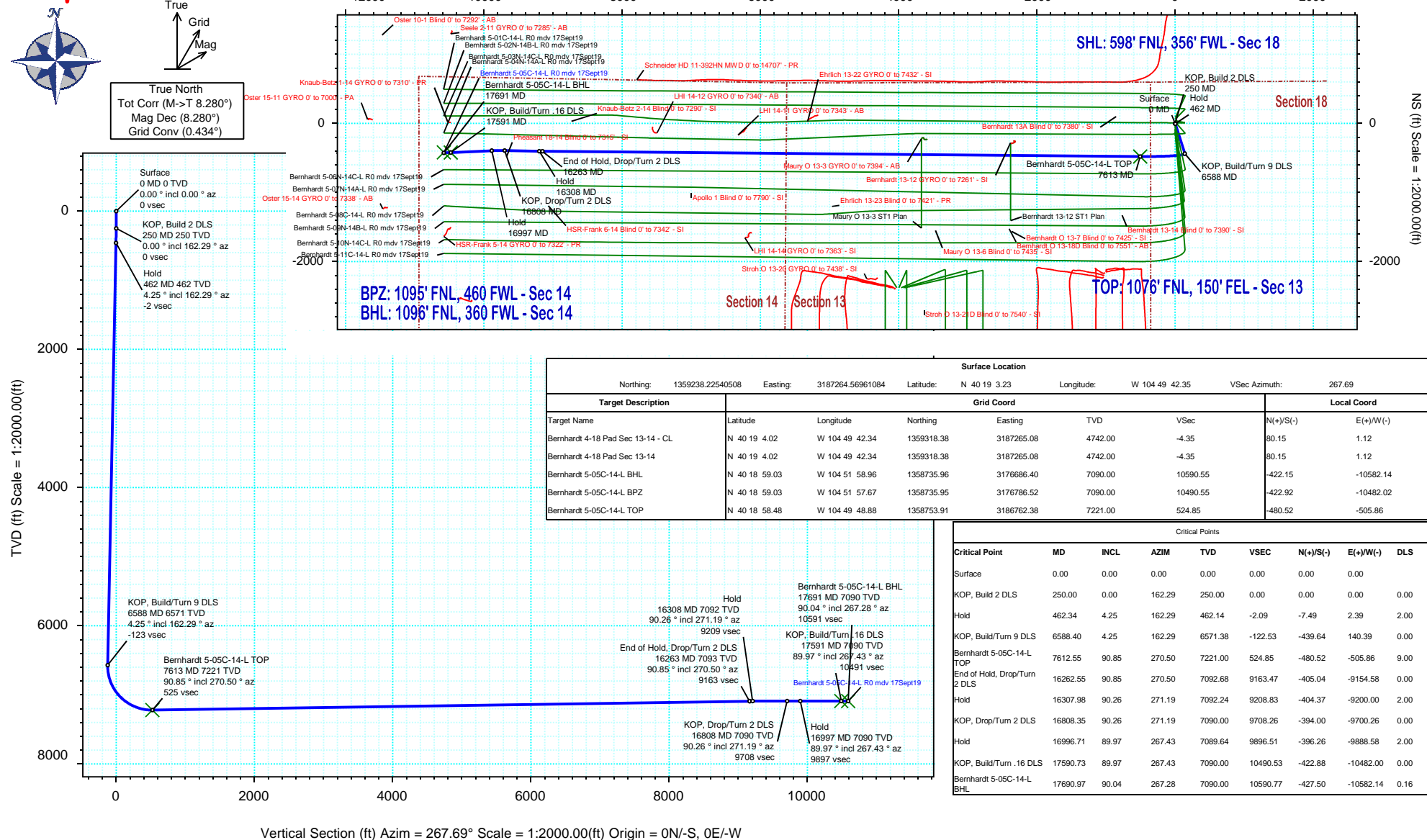
SRC Energy

Rev 0

Schlumberger

Borehole:				Well:				Field:				Structure:			
Original Hole				Bernhardt 5-05C-14-L				CO, Weld County (NAD 83 NZ) - SRC				SRC Energy 18-04N-66W (Bernhardt 4-18 Pad)			
Gravity & Magnetic Parameters								Surface Location				Miscellaneous			
Model: HDGM 2019 Dip: 66.674° Date: 17-Sep-2019								NAD83 Colorado State Plane, Northern Zone, US Feet				Slot: Bernhardt 5-05C-14-L TVD Ref: KB 4ft(4742ft above MSL)			
MagDec: 8.28° FS: 52145.275nT Gravity FS: 999.023mgn (9.80665 Based)								Lat: N 40 19 3.23 Northing: 1359238.23ftUS Grid Conv: 0.4339°				Plan: Bernhardt 5-05C-14-L R0 mdv 17Sept19			
								Lon: W 104 49 42.35 Easting: 3187264.57ftUS Scale Fact: 0.99995752							

Proposal



Bernhardt 5-05C-14-L R0 mdv 17Sept19 Proposal Geodetic Report

(Def Plan)

Report Date: September 23, 2019 - 12:42 PM
Client: SRC Energy
Field: CO, Weld County (NAD 83 NZ) - SRC

Structure / Slot: SRC Energy 18-04N-66W (Bernhardt 4-18 Pad) / Bernhardt 5-05C-14-L

Well: Bernhardt 5-05C-14-L
Borehole: Original Hole
UWI / API#: Unknown / Unknown
Survey Name: Bernhardt 5-05C-14-L R0 mdv 17Sept19
Survey Date: September 17, 2019
Tort / AHD / DDI / ERD Ratio: 101.259 ° / 11191.704 ft / 6.443 / 1.550
Coordinate Reference System: NAD83 Colorado State Plane, Northern Zone, US Feet
Location Lat / Long: N 40° 19' 3.22680", W 104° 49' 42.35160"
Location Grid N/E Y/X: N 1359238.225 ftUS, E 3187264.570 ftUS
CRS Grid Convergence Angle: 0.4339 °
Grid Scale Factor: 0.99995752
Version / Patch: 2.10.782.0

Survey / DLS Computation: Minimum Curvature / Lubinski
Vertical Section Azimuth: 267.687 ° (True North)
Vertical Section Origin: 0.000 ft, 0.000 ft
TVD Reference Datum: KB 4ft
TVD Reference Elevation: 4742.000 ft above MSL
Seabed / Ground Elevation: 4738.000 ft above MSL
Magnetic Declination: 8.280 °
Total Gravity Field Strength: 999.0229mgn (9.80665 Based)
Gravity Model: GARM
Total Magnetic Field Strength: 52145.275 nT
Magnetic Dip Angle: 66.674 °
Declination Date: September 17, 2019
Magnetic Declination Model: HDGM 2019
North Reference: True North
Grid Convergence Used: 0.0000 °
Total Corr Mag North->True North: 8.2803 °
Local Coord Referenced To: Well Head

Comments	MD (ft)	Incl (°)	Azim True (°)	TVD (ft)	VSEC (ft)	NS (ft)	EW (ft)	DLS (°/100ft)	Northing (ftUS)	Easting (ftUS)	Latitude (°)	Longitude (°)
Surface	0.00	0.00	0.00	0.00	0.00	0.00	0.00	N/A	1359238.23	3187264.57	40.317563	-104.828431
	100.00	0.00	162.29	100.00	0.00	0.00	0.00	0.00	1359238.23	3187264.57	40.317563	-104.828431
	200.00	0.00	162.29	200.00	0.00	0.00	0.00	0.00	1359238.23	3187264.57	40.317563	-104.828431
KOP, Build 2 DLS	250.00	0.00	162.29	250.00	0.00	0.00	0.00	0.00	1359238.23	3187264.57	40.317563	-104.828431
Hold	300.00	1.00	162.29	300.00	-0.12	-0.42	0.13	2.00	1359237.81	3187264.71	40.317562	-104.828431
	400.00	3.00	162.29	399.93	-1.04	-3.74	1.19	2.00	1359234.49	3187265.79	40.317553	-104.828427
	462.34	4.25	162.29	462.14	-2.09	-7.49	2.39	2.00	1359230.75	3187267.02	40.317542	-104.828422
	500.00	4.25	162.29	499.70	-2.83	-10.15	3.24	0.00	1359228.10	3187267.89	40.317535	-104.828419
	600.00	4.25	162.29	599.43	-4.79	-17.20	5.49	0.00	1359221.06	3187270.19	40.317516	-104.828411
	700.00	4.25	162.29	699.15	-6.76	-24.26	7.75	0.00	1359214.03	3187272.50	40.317496	-104.828403
	800.00	4.25	162.29	798.88	-8.73	-31.31	10.00	0.00	1359206.99	3187274.80	40.317477	-104.828395
	900.00	4.25	162.29	898.60	-10.69	-38.37	12.25	0.00	1359199.95	3187277.11	40.317458	-104.828387
	1000.00	4.25	162.29	998.33	-12.66	-45.42	14.50	0.00	1359192.92	3187279.42	40.317438	-104.828379
	1100.00	4.25	162.29	1098.05	-14.62	-52.48	16.76	0.00	1359185.88	3187281.72	40.317419	-104.828371
	1200.00	4.25	162.29	1197.78	-16.59	-59.53	19.01	0.00	1359178.84	3187284.03	40.317400	-104.828363
	1300.00	4.25	162.29	1297.51	-18.56	-66.58	21.26	0.00	1359171.81	3187286.33	40.317380	-104.828355
	1400.00	4.25	162.29	1397.23	-20.52	-73.64	23.51	0.00	1359164.77	3187288.64	40.317361	-104.828347
	1500.00	4.25	162.29	1496.96	-22.49	-80.69	25.77	0.00	1359157.73	3187290.95	40.317342	-104.828339
	1600.00	4.25	162.29	1596.68	-24.45	-87.75	28.02	0.00	1359150.70	3187293.25	40.317322	-104.828331
	1700.00	4.25	162.29	1696.41	-26.42	-94.80	30.27	0.00	1359143.66	3187295.56	40.317303	-104.828322
	1800.00	4.25	162.29	1796.13	-28.39	-101.85	32.52	0.00	1359136.62	3187297.86	40.317283	-104.828314
	1900.00	4.25	162.29	1895.86	-30.35	-108.91	34.78	0.00	1359129.59	3187300.17	40.317264	-104.828306
	2000.00	4.25	162.29	1995.58	-32.32	-115.96	37.03	0.00	1359122.55	3187302.47	40.317245	-104.828298
	2100.00	4.25	162.29	2095.31	-34.28	-123.02	39.28	0.00	1359115.51	3187304.78	40.317225	-104.828290
	2200.00	4.25	162.29	2195.03	-36.25	-130.07	41.53	0.00	1359108.48	3187307.09	40.317206	-104.828282
	2300.00	4.25	162.29	2294.76	-38.22	-137.13	43.79	0.00	1359101.44	3187309.39	40.317187	-104.828274
	2400.00	4.25	162.29	2394.49	-40.18	-144.18	46.04	0.00	1359094.40	3187311.70	40.317167	-104.828266
	2500.00	4.25	162.29	2494.21	-42.15	-151.23	48.29	0.00	1359087.37	3187314.00	40.317148	-104.828258
	2600.00	4.25	162.29	2593.94	-44.11	-158.29	50.55	0.00	1359080.33	3187316.31	40.317129	-104.828250
	2700.00	4.25	162.29	2693.66	-46.08	-165.34	52.80	0.00	1359073.29	3187318.62	40.317109	-104.828242
	2800.00	4.25	162.29	2793.39	-48.05	-172.40	55.05	0.00	1359066.26	3187320.92	40.317090	-104.828234
	2900.00	4.25	162.29	2893.11	-50.01	-179.45	57.30	0.00	1359059.22	3187323.23	40.317070	-104.828226
	3000.00	4.25	162.29	2992.84	-51.98	-186.51	59.56	0.00	1359052.18	3187325.53	40.317051	-104.828217
	3100.00	4.25	162.29	3092.56	-53.94	-193.56	61.81	0.00	1359045.15	3187327.84	40.317032	-104.828209
	3200.00	4.25	162.29	3192.29	-55.91	-200.61	64.06	0.00	1359038.11	3187330.14	40.317012	-104.828201
	3300.00	4.25	162.29	3292.01	-57.88	-207.67	66.31	0.00	1359031.07	3187332.45	40.316993	-104.828193
	3400.00	4.25	162.29	3391.74	-59.84	-214.72	68.57	0.00	1359024.04	3187334.76	40.316974	-104.828185
	3500.00	4.25	162.29	3491.47	-61.81	-221.78	70.82	0.00	1359017.00	3187337.06	40.316954	-104.828177
	3600.00	4.25	162.29	3591.19	-63.77	-228.83	73.07	0.00	1359009.96	3187339.37	40.316935	-104.828169
	3700.00	4.25	162.29	3690.92	-65.74	-235.89	75.32	0.00	1359002.93	3187341.67	40.316916	-104.828161
	3800.00	4.25	162.29	3790.64	-67.71	-242.94	77.58	0.00	1358995.89	3187343.98	40.316896	-104.828153
	3900.00	4.25	162.29	3890.37	-69.67	-249.99	79.83	0.00	1358988.85	3187346.29	40.316877	-104.828145
	4000.00	4.25	162.29	3990.09	-71.64	-257.05	82.08	0.00	1358981.82	3187348.59	40.316857	-104.828137
	4100.00	4.25	162.29	4089.82	-73.60	-264.10	84.33	0.00	1358974.78	3187350.90	40.316838	-104.828129
	4200.00	4.25	162.29	4189.54	-75.57	-271.16	86.59	0.00	1358967.74	3187353.20	40.316819	-104.828121
	4300.00	4.25	162.29	4289.27	-77.54	-278.21	88.84	0.00	1358960.71	3187355.51	40.316799	-104.828112
	4400.00	4.25	162.29	4388.99	-79.50	-285.26	91.09	0.00	1358953.67	3187357.81	40.316780	-104.828104
	4500.00	4.25	162.29	4488.72	-81.47	-292.32	93.34	0.00	1358946.63	3187360.12	40.316761	-104.828096
	4600.00	4.25	162.29	4588.45	-83.43	-299.37	95.60	0.00	1358939.60	3187362.43	40.316741	-104.828088
4700.00	4.25	162.29	4688.17	-85.40	-306.43	97.85	0.00	1358932.56	3187364.73	40.316722	-104.828080	
4800.00	4.25	162.29	4787.90	-87.37	-313.48	100.10	0.00	1358925.52	3187367.04	40.316703	-104.828072	
4900.00	4.25	162.29	4887.62	-89.33	-320.54	102.35	0.00	1358918.49	3187369.34	40.316683	-104.828064	
5000.00	4.25	162.29	4987.35	-91.30	-327.59	104.61	0.00	1358911.45	3187371.65	40.316664	-104.828056	
5100.00	4.25	162.29	5087.07	-93.26	-334.64	106.86	0.00	1358904.41	3187373.96	40.316644	-104.828048	
5200.00	4.25	162.29	5186.80	-95.23	-341.70	109.11	0.00	1358897.38	3187376.26	40.316625	-104.828040	
5300.00	4.25	162.29	5286.52	-97.20	-348.75	111.36	0.00	1358890.34	3187378.57	40.316606	-104.828032	
5400.00	4.25	162.29	5386.25	-99.16	-355.81	113.62	0.00	1358883.30	3187380.87	40.316586	-104.828024	
5500.00	4.25	162.29	5485.97	-101.13	-362.86	115.87	0.00	1358876.27	3187383.18	40.316567	-104.828015	
5600.00	4.25	162.29	5585.70	-103.09	-369.92	118.12	0.00	1358869.23	3187385.48	40.316548	-104.828007	
5700.00	4.25	162.29	5685.43	-105.06	-376.97	120.37	0.00	1358862.19	3187387.79	40.316528	-104.827999	
5800.00	4.25	162.29	5785.15	-107.03	-384.02	122.63	0.00	1358855.16	3187390.10	40.316509	-104.827991	
5900.00	4.25	162.29	5884.88	-108.99	-391.08	124.88	0.00	1358848.12	3187392.40	40.316490	-104.827983	
6000.00	4.25	162.29	5984.60	-110.96	-398.13	127.13	0.00	1358841.08	3187394.71	40.316470	-104.827975	
6100.00	4.25	162.29	6084.33	-112.92	-405.19	129.39	0.00	1358834.05	3187397.01	40.316451	-104.827967	
6200.00	4.25	162.29	6184.05	-114.89	-412.24	131.64	0.00	1358827.01	3187399.32	40.316431	-104.827959	
6300.00	4.25	162.29	6283.78	-116.86	-419.30	133.89	0.00	1358819.97	3187401.63	40.316412	-104.827951	
6400.00	4.25	162.29	6383.50	-118.82	-426.35	136.14	0.00	1358812.94	3187403.93	40.316393	-104.827943	
6500.00	4.25	162.29	6483.23	-120.79	-433.40	138.40	0.00	1358805.90	3187406.24	40.316373	-104.827935	
KOP, Build/Turn 9 DLS	6588.40	4.25	162.29	6571.38	-122.53	-439.64	140.39	0.00	1358799.68	3187408.28	40.316356	-104.827928
	6600.00	4.05	176.51	6582.96	-122.65	-440.46	140.54	9.00	1358798.86	3187408.44	40.316354	-104.827927
	6700.00	9.60	245.80	6682.33	-114.96	-447.41	133.13	9.00	1358791.85	3187401.08	40.316335	-104.827954
	6800.00	18.16	258.02	6779.34	-91.81	-454.08	110.23	9.00	1358785.01	3187378.23	40.316317	-104.828036
	6900.00	27.00	262.48	6871.59	-53.76	-460.30	72.40	9.00	1358778.51	3187340.45	40.316300	-104.828171
	7000.00	35.92	264.85	6966.81	-1.75	-465.92	20.57	9.00	1358772.50	3187288.67	40.316284	-104.828357
	7100.00	44.87	266.37	7032.89	62.94	-470.79	-43.98	9.00	1358767.14	3187224.16	40.316271	-104.828557

	MD (ft)	Incl (°)	Azim True (°)	TVD (ft)	VSEC (ft)	NS (ft)	EW (ft)	DLS (°/100ft)	Northing (ftUS)	Easting (ftUS)	Latitude (°)	Longitude (°)
Bernhardt 5-05C-14-L TOP	7200.00	53.83	267.48	7097.98	138.73	-474.80	-119.66	9.00	1358762.55	3187148.52	40.316260	-104.828860
	7300.00	62.80	268.36	7150.45	223.73	-477.85	-204.61	9.00	1358758.86	3187063.60	40.316251	-104.829165
	7400.00	71.77	269.11	7189.03	315.86	-479.87	-296.73	9.00	1358756.15	3186971.49	40.316246	-104.829495
	7500.00	80.75	269.78	7212.76	412.85	-480.80	-393.76	9.00	1358754.48	3186874.48	40.316243	-104.829843
	7600.00	89.72	270.42	7221.06	512.31	-480.62	-493.32	9.00	1358753.91	3186774.93	40.316244	-104.830200
	7612.55	90.85	270.50	7221.00	524.85	-480.52	-505.86	9.00	1358753.91	3186762.38	40.316244	-104.830245
	7700.00	90.85	270.50	7219.70	612.18	-479.75	-593.30	0.00	1358754.01	3186674.94	40.316246	-104.830559
	7800.00	90.85	270.50	7218.22	712.05	-478.88	-693.29	0.00	1358754.13	3186574.96	40.316248	-104.830917
	7900.00	90.85	270.50	7216.74	811.92	-478.01	-793.27	0.00	1358754.25	3186474.97	40.316251	-104.831276
	8000.00	90.85	270.50	7215.25	911.79	-477.13	-893.26	0.00	1358754.36	3186374.99	40.316253	-104.831634
	8100.00	90.85	270.50	7213.77	1011.66	-476.26	-993.24	0.00	1358754.48	3186275.01	40.316256	-104.831993
	8200.00	90.85	270.50	7212.29	1111.53	-475.39	-1093.23	0.00	1358754.59	3186175.02	40.316258	-104.832351
	8300.00	90.85	270.50	7210.80	1211.40	-474.52	-1193.21	0.00	1358754.71	3186075.04	40.316260	-104.832710
	8400.00	90.85	270.50	7209.32	1311.26	-473.64	-1293.20	0.00	1358754.82	3185975.05	40.316263	-104.833068
	8500.00	90.85	270.50	7207.83	1411.13	-472.77	-1393.18	0.00	1358754.94	3185875.07	40.316265	-104.833427
	8600.00	90.85	270.50	7206.35	1511.00	-471.90	-1493.17	0.00	1358755.05	3185775.08	40.316268	-104.833785
	8700.00	90.85	270.50	7204.87	1610.87	-471.03	-1593.15	0.00	1358755.17	3185675.10	40.316270	-104.834144
	8800.00	90.85	270.50	7203.38	1710.74	-470.15	-1693.14	0.00	1358755.28	3185575.11	40.316272	-104.834503
	8900.00	90.85	270.50	7201.90	1810.61	-469.28	-1793.12	0.00	1358755.40	3185475.13	40.316275	-104.834861
	9000.00	90.85	270.50	7200.42	1910.47	-468.41	-1893.11	0.00	1358755.51	3185375.15	40.316277	-104.835220
	9100.00	90.85	270.50	7198.93	2010.34	-467.54	-1993.10	0.00	1358755.63	3185275.16	40.316279	-104.835578
	9200.00	90.85	270.50	7197.45	2110.21	-466.66	-2093.08	0.00	1358755.74	3185175.18	40.316282	-104.835937
	9300.00	90.85	270.50	7195.97	2210.08	-465.79	-2193.07	0.00	1358755.86	3185075.19	40.316284	-104.836295
	9400.00	90.85	270.50	7194.48	2309.95	-464.92	-2293.05	0.00	1358755.98	3184975.21	40.316287	-104.836654
	9500.00	90.85	270.50	7193.00	2409.82	-464.05	-2393.04	0.00	1358756.09	3184875.22	40.316289	-104.837012
	9600.00	90.85	270.50	7191.52	2509.69	-463.17	-2493.02	0.00	1358756.21	3184775.24	40.316291	-104.837371
	9700.00	90.85	270.50	7190.03	2609.55	-462.30	-2593.01	0.00	1358756.32	3184675.25	40.316294	-104.837729
	9800.00	90.85	270.50	7188.55	2709.42	-461.43	-2692.99	0.00	1358756.44	3184575.27	40.316296	-104.838088
	9900.00	90.85	270.50	7187.07	2809.29	-460.56	-2792.98	0.00	1358756.55	3184475.29	40.316298	-104.838446
	10000.00	90.85	270.50	7185.58	2909.16	-459.68	-2892.96	0.00	1358756.67	3184375.30	40.316301	-104.838805
	10100.00	90.85	270.50	7184.10	3009.03	-458.81	-2992.95	0.00	1358756.78	3184275.32	40.316303	-104.839164
	10200.00	90.85	270.50	7182.62	3108.90	-457.94	-3092.93	0.00	1358756.90	3184175.33	40.316305	-104.839522
	10300.00	90.85	270.50	7181.13	3208.76	-457.07	-3192.92	0.00	1358757.01	3184075.35	40.316308	-104.839881
	10400.00	90.85	270.50	7179.65	3308.63	-456.19	-3292.90	0.00	1358757.13	3183975.36	40.316310	-104.840239
	10500.00	90.85	270.50	7178.17	3408.50	-455.32	-3392.89	0.00	1358757.24	3183875.38	40.316313	-104.840598
	10600.00	90.85	270.50	7176.68	3508.37	-454.45	-3492.87	0.00	1358757.36	3183775.39	40.316315	-104.840956
	10700.00	90.85	270.50	7175.20	3608.24	-453.58	-3592.86	0.00	1358757.47	3183675.41	40.316317	-104.841315
	10800.00	90.85	270.50	7173.71	3708.11	-452.70	-3692.84	0.00	1358757.59	3183575.42	40.316320	-104.841673
	10900.00	90.85	270.50	7172.23	3807.98	-451.83	-3792.83	0.00	1358757.70	3183475.44	40.316322	-104.842032
	11000.00	90.85	270.50	7170.75	3907.84	-450.96	-3892.81	0.00	1358757.82	3183375.45	40.316324	-104.842390
	11100.00	90.85	270.50	7169.26	4007.71	-450.09	-3992.80	0.00	1358757.94	3183275.47	40.316327	-104.842749
	11200.00	90.85	270.50	7167.78	4107.58	-449.21	-4092.78	0.00	1358758.05	3183175.49	40.316329	-104.843107
	11300.00	90.85	270.50	7166.30	4207.45	-448.34	-4192.77	0.00	1358758.17	3183075.50	40.316331	-104.843466
	11400.00	90.85	270.50	7164.81	4307.32	-447.47	-4292.75	0.00	1358758.28	3182975.52	40.316334	-104.843825
	11500.00	90.85	270.50	7163.33	4407.19	-446.60	-4392.74	0.00	1358758.40	3182875.53	40.316336	-104.844183
	11600.00	90.85	270.50	7161.85	4507.05	-445.72	-4492.72	0.00	1358758.51	3182775.55	40.316338	-104.844542
11700.00	90.85	270.50	7160.36	4606.92	-444.85	-4592.71	0.00	1358758.63	3182675.56	40.316341	-104.844900	
11800.00	90.85	270.50	7158.88	4706.79	-443.98	-4692.70	0.00	1358758.74	3182575.58	40.316343	-104.845259	
11900.00	90.85	270.50	7157.40	4806.66	-443.11	-4792.68	0.00	1358758.86	3182475.60	40.316345	-104.845617	
12000.00	90.85	270.50	7155.91	4906.53	-442.23	-4892.67	0.00	1358758.97	3182375.61	40.316348	-104.845976	
12100.00	90.85	270.50	7154.43	5006.40	-441.36	-4992.65	0.00	1358759.09	3182275.63	40.316350	-104.846334	
12200.00	90.85	270.50	7152.95	5106.27	-440.49	-5092.64	0.00	1358759.20	3182175.64	40.316352	-104.846693	
12300.00	90.85	270.50	7151.46	5206.13	-439.61	-5192.62	0.00	1358759.32	3182075.66	40.316355	-104.847051	
12400.00	90.85	270.50	7149.98	5306.00	-438.74	-5292.61	0.00	1358759.43	3181975.67	40.316357	-104.847410	
12500.00	90.85	270.50	7148.50	5405.87	-437.87	-5392.59	0.00	1358759.55	3181875.69	40.316359	-104.847769	
12600.00	90.85	270.50	7147.01	5505.74	-437.00	-5492.58	0.00	1358759.67	3181775.70	40.316362	-104.848127	
12700.00	90.85	270.50	7145.53	5605.61	-436.12	-5592.56	0.00	1358759.78	3181675.72	40.316364	-104.848486	
12800.00	90.85	270.50	7144.05	5705.48	-435.25	-5692.55	0.00	1358759.90	3181575.74	40.316366	-104.848844	
12900.00	90.85	270.50	7142.56	5805.35	-434.38	-5792.53	0.00	1358760.01	3181475.75	40.316369	-104.849203	
13000.00	90.85	270.50	7141.08	5905.21	-433.51	-5892.52	0.00	1358760.13	3181375.77	40.316371	-104.849561	
13100.00	90.85	270.50	7139.60	6005.08	-432.63	-5992.50	0.00	1358760.24	3181275.78	40.316373	-104.849920	
13200.00	90.85	270.50	7138.11	6104.95	-431.76	-6092.49	0.00	1358760.36	3181175.80	40.316376	-104.850278	
13300.00	90.85	270.50	7136.63	6204.82	-430.89	-6192.47	0.00	1358760.47	3181075.81	40.316378	-104.850637	
13400.00	90.85	270.50	7135.14	6304.69	-430.02	-6292.46	0.00	1358760.59	3180975.83	40.316380	-104.850995	
13500.00	90.85	270.50	7133.66	6404.56	-429.14	-6392.44	0.00	1358760.70	3180875.84	40.316383	-104.851354	
13600.00	90.85	270.50	7132.18	6504.42	-428.27	-6492.43	0.00	1358760.82	3180775.86	40.316385	-104.851713	
1370												

Comments	MD (ft)	Incl (°)	Azim True (°)	TVD (ft)	VSEC (ft)	NS (ft)	EW (ft)	DLS (°/100ft)	Northing (ftUS)	Easting (ftUS)	Latitude (°)	Longitude (°)
	17200.00	89.97	267.43	7089.76	10099.80	-405.37	-10091.66	0.00	1358756.46	3177176.72	40.316445	-104.864619
	17300.00	89.97	267.43	7089.82	10199.80	-409.85	-10191.56	0.00	1358751.22	3177076.86	40.316432	-104.864977
	17400.00	89.97	267.43	7089.88	10299.80	-414.33	-10291.46	0.00	1358745.98	3176977.00	40.316420	-104.865336
	17500.00	89.97	267.43	7089.94	10399.80	-418.81	-10391.36	0.00	1358740.75	3176877.14	40.316407	-104.865694
KOP, Build/Turn .16 DLS	17590.73	89.97	267.43	7090.00	10490.53	-422.88	-10482.00	0.00	1358736.00	3176786.54	40.316396	-104.866019
	17600.00	89.97	267.42	7090.01	10499.80	-423.30	-10491.26	0.16	1358735.51	3176777.28	40.316395	-104.866052
Bernhardt 5-05C- 14-L BHL	17690.97	90.04	267.28	7090.00	10590.77	-427.50	-10582.14	0.16	1358730.62	3176686.45	40.316383	-104.866378

Survey Type: Def Plan

Survey Error Model: ISCWSA Rev 0 *** 3-D 95.000% Confidence 2.7955 sigma

Survey Program:

Description	Part	MD From (ft)	MD To (ft)	EOU Freq (ft)	Hole Size	Casing Diameter (in)	Expected Max Inclination (deg)	Survey Tool Type	Borehole / Survey
	1	0.000	4.000	1/100.000	13.500	9.625		NAL_MWD_IFR1-Depth Only	Original Hole / Bernhardt 5-05C- 14-L R0 mdv 17Sept19
	1	4.000	1800.000	1/100.000	13.500	9.625		NAL_MWD_IFR1	Original Hole / Bernhardt 5-05C- 14-L R0 mdv 17Sept19
	1	1800.000	17690.973	1/100.000	8.500	5.500		NAL_MWD_IFR1+MS	Original Hole / Bernhardt 5-05C- 14-L R0 mdv 17Sept19