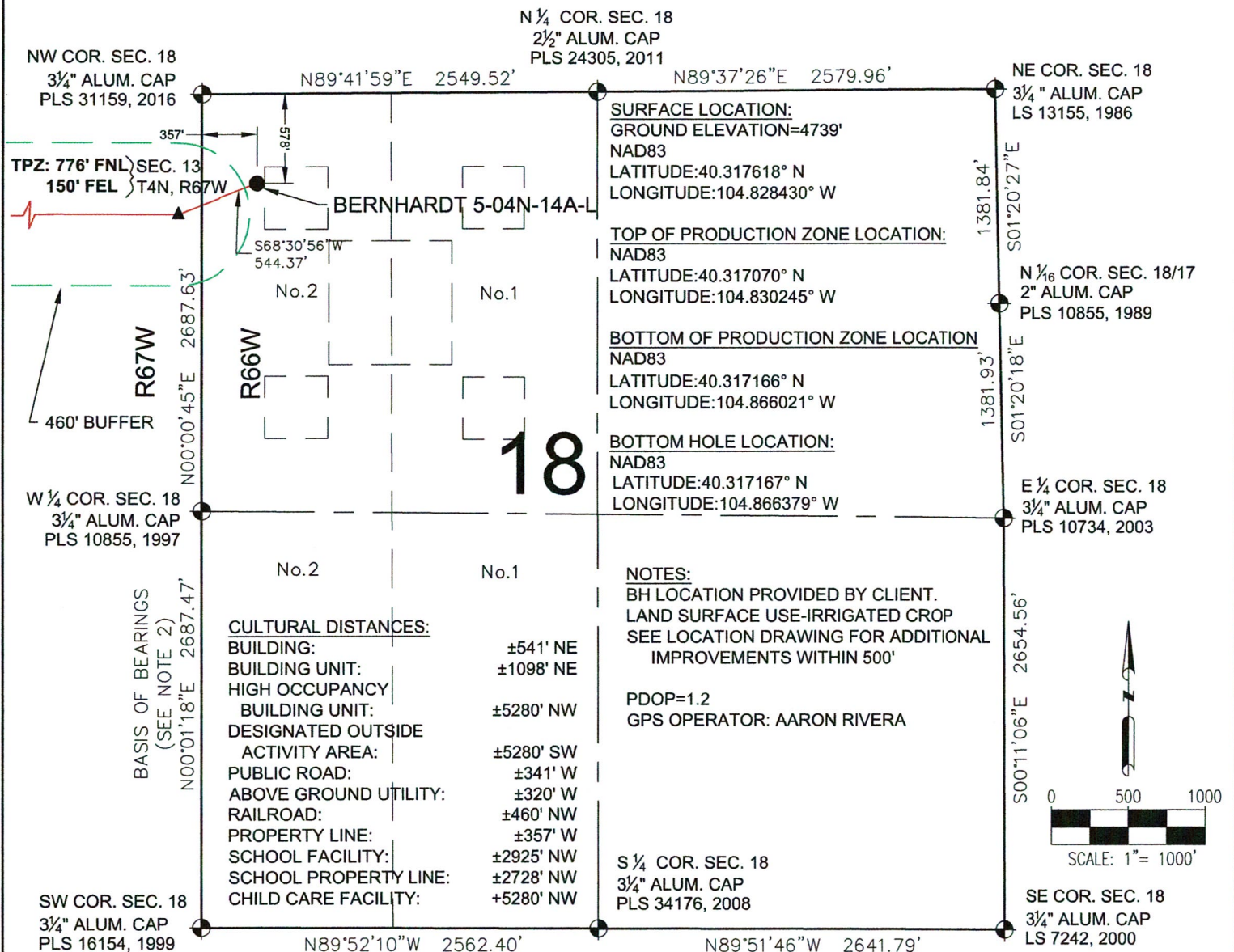


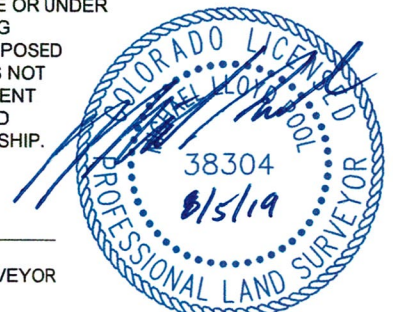
BERNHARDT 5-04N-14A-L WELL LOCATION CERTIFICATE



WELL BERNHARDT 5-04N-14A-L TO BE LOCATED 578' FNL & 357' FWL

SURVEYOR IN THE STATE OF COLORADO DO HEREBY CERTIFY TO **SRC ENERGY, INC.** THAT THE SURVEY AND WELL LOCATION CERTIFICATE SHOWN HEREON WERE DONE BY ME OR UNDER MY DIRECT SUPERVISION AND THAT THE DRAWING SHOWN HEREON ACCURATELY DEPICTS THE PROPOSED LOCATION OF THE WELL. THIS CERTIFICATE DOES NOT REPRESENT A LAND SURVEY PLAT OR IMPROVEMENT SURVEY PLAT AS DEFINED BY C.R.S. 38-51-102 AND CANNOT BE RELIED UPON TO DETERMINE OWNERSHIP.

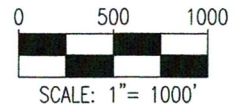
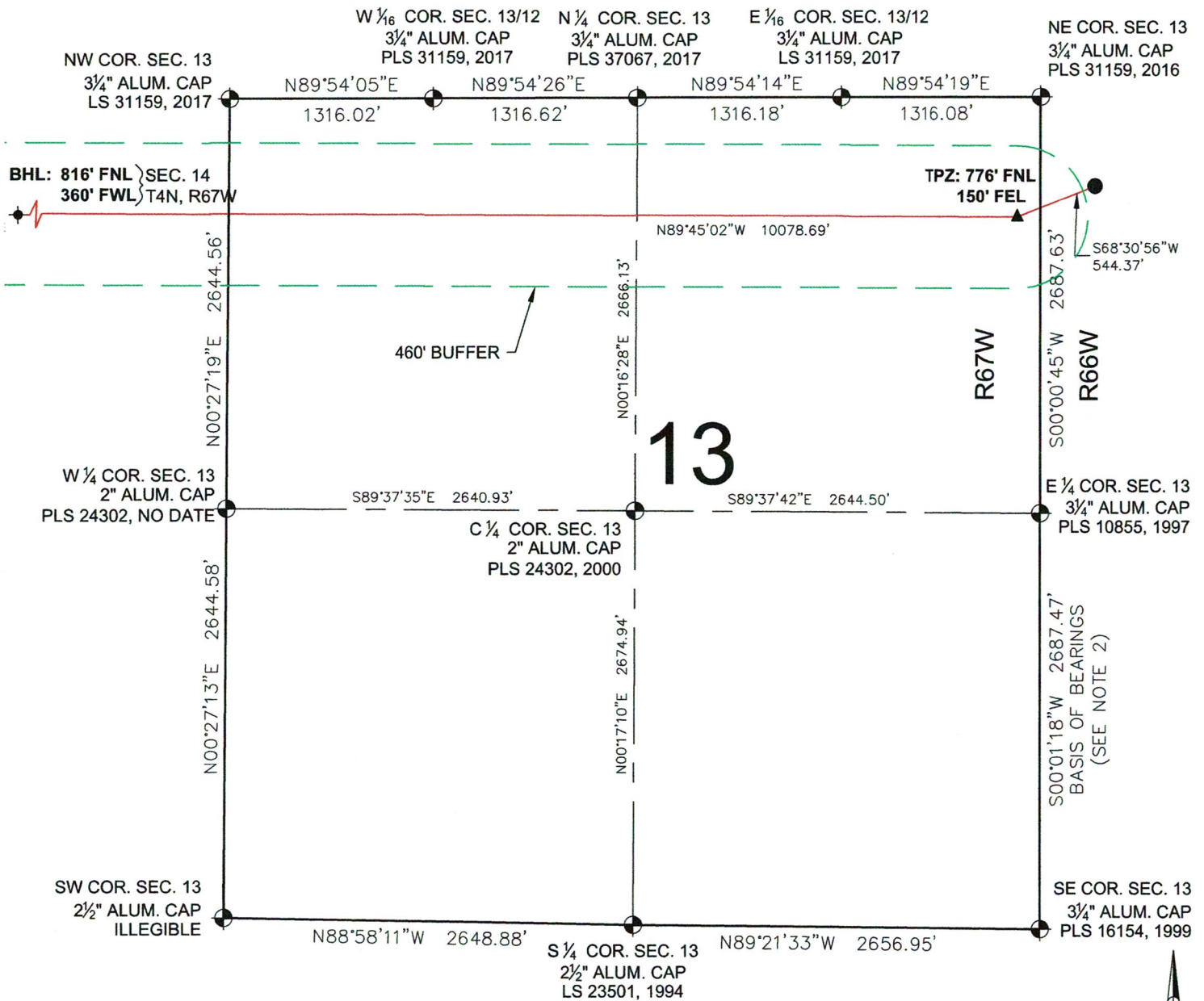
MICHAEL L. POOL, PLS 38304
COLORADO LICENSED PROFESSIONAL LAND SURVEYOR
FOR AND ON BEHALF OF P.F.S., LLC



SHEET 1 OF 3

<p>8620 Wolff Court Westminster, CO 80031 (303) 928-7128 www.ascentgeomatics.com</p>	FIELD DATE: 11-10-16	WELL NAME: BERNHARDT 5-04N-14A-L	PREPARED FOR:
	DRAWING DATE: 08-02-19	SURFACE LOCATION: LOT 2 NW 1/4 SEC. 18, T4N, R66W, 6TH P.M. WELD COUNTY, COLORADO	
BY: DNS	CHECKED BY: JW		

BERNHARDT 5-04N-14A-L WELL LOCATION CERTIFICATE



LEGEND

- = EXISTING MONUMENT
- = CALCULATED POSITION
- = PROPOSED WELL
- ◆ = EXISTING WELL
- ◆ = BOTTOM HOLE
- △ = BOTTOM OF PRODUCTION ZONE
- ▲ = TOP OF PRODUCTION ZONE
- TPZ = TOP OF PRODUCTION ZONE
- BHL = BOTTOM HOLE LOCATION
- BPZ = BOTTOM OF PRODUCTION ZONE

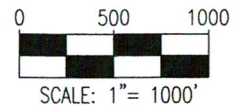
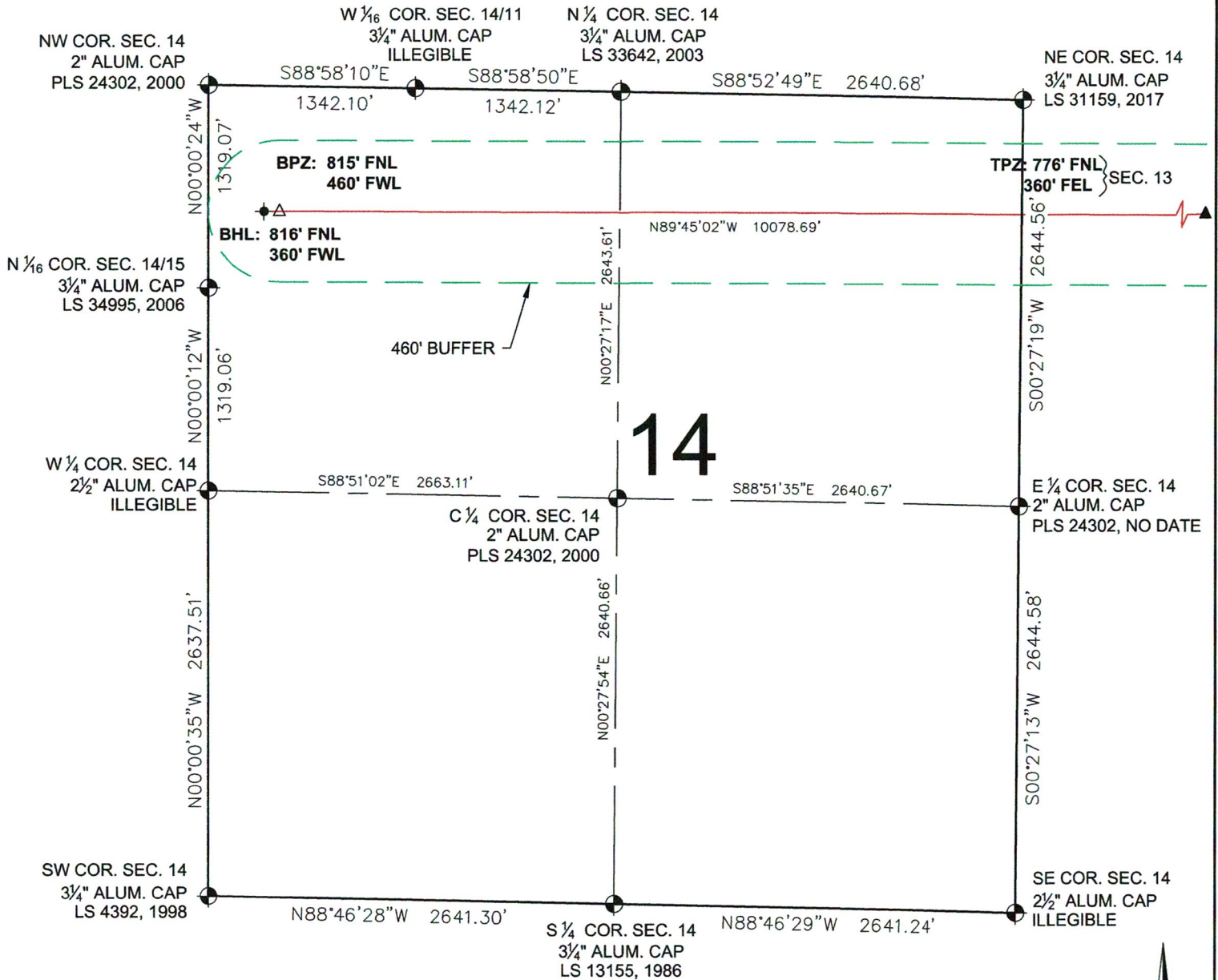
MICHAEL L. POOL, PLS 38304
COLORADO LICENSED PROFESSIONAL LAND SURVEYOR
FOR AND ON BEHALF OF P.F.S., LLC



SHEET 2 OF 3

PREPARED BY: 8620 Wolff Court Westminster, CO 80031 (303) 928-7128 www.ascentgeomatics.com	FIELD DATE: 11-10-16 DRAWING DATE: 08-02-19 BY: DNS CHECKED BY: JW	WELL NAME: BERNHARDT 5-04N-14A-L SURFACE LOCATION: LOT 2 NW 1/4 SEC. 18, T4N, R66W, 6TH P.M. WELD COUNTY, COLORADO
		PREPARED FOR: SRC ENERGY

BERNHARDT 5-04N-14A-L WELL LOCATION CERTIFICATE



LEGEND

- ⊙ = EXISTING MONUMENT △ = BOTTOM OF PRODUCTION ZONE
- = CALCULATED POSITION ▲ = TOP OF PRODUCTION ZONE
- = PROPOSED WELL TPZ = TOP OF PRODUCTION ZONE
- ◆ = EXISTING WELL BHL = BOTTOM HOLE LOCATION
- ⬮ = BOTTOM HOLE BPZ = BOTTOM OF PRODUCTION ZONE

MICHAEL L. POOL, PLS 38304
COLORADO LICENSED PROFESSIONAL LAND SURVEYOR
FOR AND ON BEHALF OF P.F.S., LLC



SHEET 3 OF 3

FIELD DATE:
11-10-16

DRAWING DATE:
08-02-19

BY:
DNS

CHECKED BY:
JW

WELL NAME:
BERNHARDT 5-04N-14A-L

SURFACE LOCATION:
LOT 2 NW 1/4 SEC. 18, T4N, R66W, 6TH P.M.
WELD COUNTY, COLORADO

PREPARED FOR: