



SRC Energy

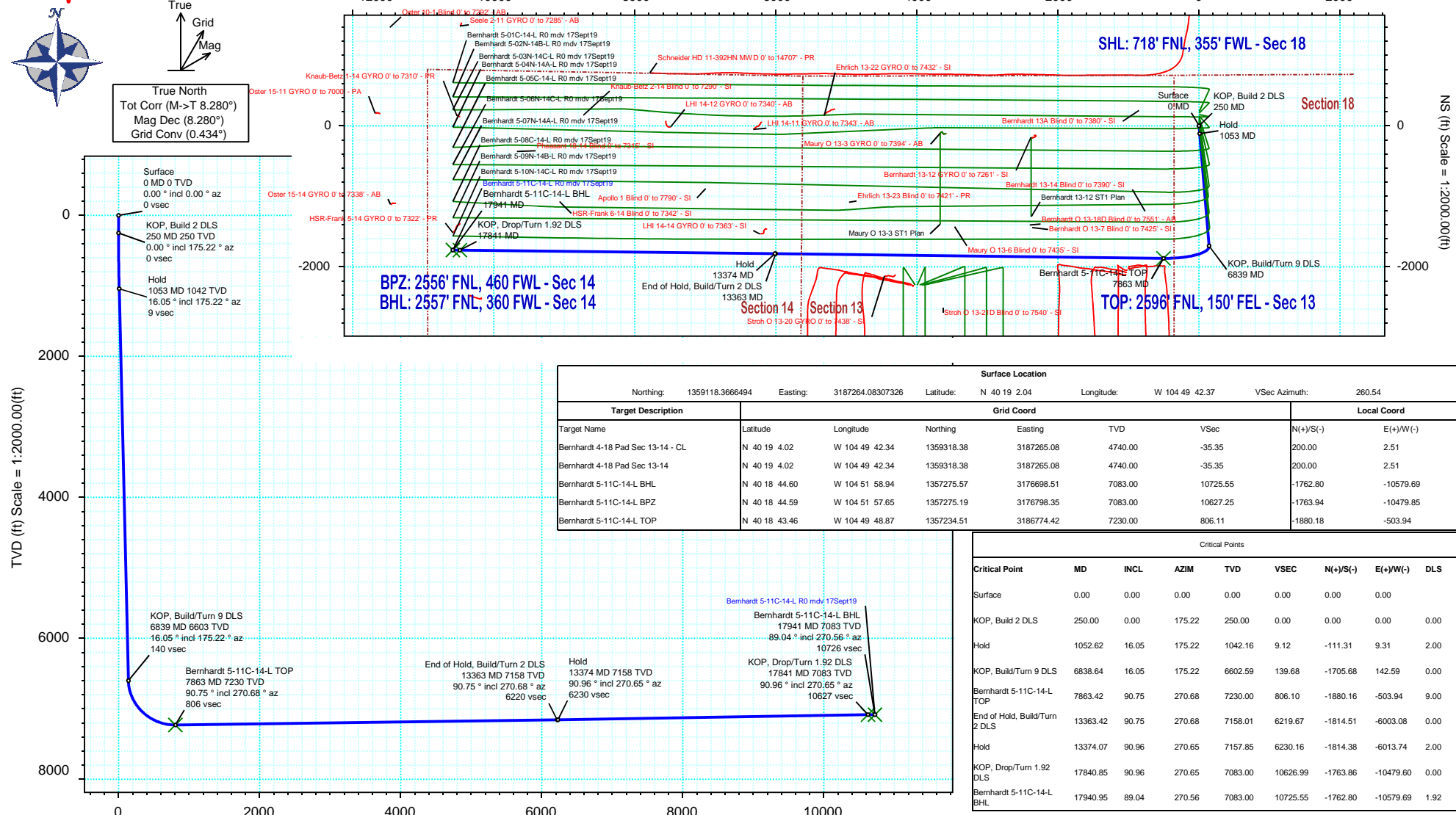
Rev 0

Schlumberger

Borehole:	Well:	Field:	Structure:
Original Hole	Bernhardt 5-11C-14-L	CO, Weld County (NAD 83 NZ) - SRC	SRC Energy 18-04N-66W (Bernhardt 4-18 Pad)

Gravity & Magnetic Parameters					Surface Location				NAD83 Colorado State Plane, Northern Zone, US Feet				Miscellaneous			
Model:	HDGM 2019	Dip:	66.673°	Date:	17-Sep-2019	Lat:	N 40 19 2.04	Northings:	1359118.37ftUS	Grid Conv:	0.4339°	Slot:	Bernhardt 5-11C-14-L	TVD Ref:	KB 4ft(4740ft above MSL)	
MagDec:	8.28°	FS:	52145.156nT	Gravity FS:	999.023mgn (9.80665 Based)	Lon:	W 104 49 42.37	Easting:	3187264.08ftUS	Scale Fact:	0.99995752	Plan:	Bernhardt 5-11C-14-L R0 mdy 17Sept19			

Proposal





Bernhardt 5-11C-14-L R0 mdv 17Sept19 Proposal Geodetic Report

(Def Plan)

Report Date: September 23, 2019 - 02:49 PM
Client: SRC Energy
Field: CO, Weld County (NAD 83 NZ) - SRC
Structure / Slot: SRC Energy 18-04N-66W (Bernhardt 4-18 Pad) / Bernhardt 5-11C-14-L
Well: Bernhardt 5-11C-14-L
Borehole: Original Hole
UWI / API#: Unknown / Unknown
Survey Name: Bernhardt 5-11C-14-L R0 mdv 17Sept19
Survey Date: September 17, 2019
Tort / AHD / DDI / ERD Ratio: 110.417 ° / 12491.476 ft / 6.534 / 1.728
Coordinate Reference System: NAD83 Colorado State Plane, Northern Zone, US Feet
Location Lat / Long: N 40° 19' 2.04240", W 104° 49' 42.36960"
Location Grid N/E Y/X: N 1359118.367 ftUS, E 3187264.083 ftUS
CRS Grid Convergence Angle: 0.4339 °
Grid Scale Factor: 0.99995752
Version / Patch: 2.10.782.0

Survey / DLS Computation: Minimum Curvature / Lubinski
Vertical Section Azimuth: 260.540 ° (True North)
Vertical Section Origin: 0.000 ft, 0.000 ft
TVD Reference Datum: KB 4ft
TVD Reference Elevation: 4740.000 ft above MSL
Seabed / Ground Elevation: 4738.000 ft above MSL
Magnetic Declination: 8.280 °
Total Gravity Field Strength: 999.0231mgn (9.80665 Based)
Gravity Model: GARM
Total Magnetic Field Strength: 52145.156 nT
Magnetic Dip Angle: 66.673 °
Declination Date: September 17, 2019
Magnetic Declination Model: HDGM 2019
North Reference: True North
Grid Convergence Used: 0.0000 °
Total Corr Mag North->True North: 8.2804 °
Local Coord Referenced To: Well Head

Comments	MD (ft)	Incl (°)	Azim True (°)	TVD (ft)	VSEC (ft)	NS (ft)	EW (ft)	DLS (°/100ft)	Northing (ftUS)	Easting (ftUS)	Latitude (°)	Longitude (°)
Surface	0.00	0.00	0.00	0.00	0.00	0.00	0.00	N/A	1359118.37	3187264.08	40.317234	-104.828436
	100.00	0.00	175.22	100.00	0.00	0.00	0.00	0.00	1359118.37	3187264.08	40.317234	-104.828436
	200.00	0.00	175.22	200.00	0.00	0.00	0.00	0.00	1359118.37	3187264.08	40.317234	-104.828436
KOP, Build 2 DLS	250.00	0.00	175.22	250.00	0.00	0.00	0.00	0.00	1359118.37	3187264.08	40.317234	-104.828436
	300.00	1.00	175.22	300.00	0.04	-0.43	0.04	2.00	1359117.93	3187264.12	40.317233	-104.828436
	400.00	3.00	175.22	399.93	0.32	-3.91	0.33	2.00	1359114.46	3187264.44	40.317223	-104.828435
	500.00	5.00	175.22	499.68	0.89	-10.86	0.91	2.00	1359107.51	3187265.07	40.317204	-104.828433
	600.00	7.00	175.22	599.13	1.74	-21.28	1.78	2.00	1359097.10	3187266.02	40.317176	-104.828430
	700.00	9.00	175.22	698.15	2.88	-35.15	2.94	2.00	1359083.24	3187267.29	40.317138	-104.828425
	800.00	11.00	175.22	796.63	4.30	-52.45	4.38	2.00	1359065.95	3187268.86	40.317090	-104.828420
	900.00	13.00	175.22	894.44	5.99	-73.17	6.12	2.00	1359045.25	3187270.75	40.317033	-104.828414
	1000.00	15.00	175.22	991.46	7.97	-97.28	8.13	2.00	1359021.16	3187272.95	40.316967	-104.828407
Hold	1052.62	16.05	175.22	1042.16	9.12	-111.31	9.31	2.00	1359007.13	3187274.23	40.316928	-104.828403
	1100.00	16.05	175.22	1087.69	10.19	-124.37	10.40	0.00	1358994.09	3187275.42	40.316893	-104.828399
	1200.00	16.05	175.22	1183.79	12.44	-151.92	12.70	0.00	1358966.55	3187277.93	40.316817	-104.828390
	1300.00	16.05	175.22	1279.90	14.70	-179.48	15.00	0.00	1358939.01	3187280.45	40.316741	-104.828382
	1400.00	16.05	175.22	1376.00	16.95	-207.03	17.31	0.00	1358911.48	3187282.96	40.316666	-104.828374
	1500.00	16.05	175.22	1472.10	19.21	-234.59	19.61	0.00	1358883.94	3187285.47	40.316590	-104.828366
	1600.00	16.05	175.22	1568.20	21.47	-262.14	21.91	0.00	1358856.41	3187287.98	40.316514	-104.828357
	1700.00	16.05	175.22	1664.30	23.72	-289.70	24.22	0.00	1358828.87	3187290.49	40.316439	-104.828349
	1800.00	16.05	175.22	1760.40	25.98	-317.26	26.52	0.00	1358801.33	3187293.01	40.316363	-104.828341
	1900.00	16.05	175.22	1856.50	28.24	-344.81	28.83	0.00	1358773.80	3187295.52	40.316288	-104.828333
	2000.00	16.05	175.22	1952.60	30.49	-372.37	31.13	0.00	1358746.26	3187298.03	40.316212	-104.828324
	2100.00	16.05	175.22	2048.70	32.75	-399.92	33.43	0.00	1358718.73	3187300.54	40.316136	-104.828316
	2200.00	16.05	175.22	2144.80	35.01	-427.48	35.74	0.00	1358691.19	3187303.05	40.316061	-104.828308
	2300.00	16.05	175.22	2240.91	37.26	-455.03	38.04	0.00	1358663.66	3187305.57	40.315985	-104.828300
	2400.00	16.05	175.22	2337.01	39.52	-482.59	40.34	0.00	1358636.12	3187308.08	40.315909	-104.828291
	2500.00	16.05	175.22	2433.11	41.78	-510.14	42.65	0.00	1358608.58	3187310.59	40.315834	-104.828283
	2600.00	16.05	175.22	2529.21	44.03	-537.70	44.95	0.00	1358581.05	3187313.10	40.315758	-104.828275
	2700.00	16.05	175.22	2625.31	46.29	-565.25	47.25	0.00	1358553.51	3187315.61	40.315682	-104.828267
	2800.00	16.05	175.22	2721.41	48.55	-592.81	49.56	0.00	1358525.98	3187318.13	40.315607	-104.828258
	2900.00	16.05	175.22	2817.51	50.80	-620.37	51.86	0.00	1358498.44	3187320.64	40.315531	-104.828250
	3000.00	16.05	175.22	2913.61	53.06	-647.92	54.17	0.00	1358470.90	3187323.15	40.315455	-104.828242
	3100.00	16.05	175.22	3009.71	55.32	-675.48	56.47	0.00	1358443.37	3187325.66	40.315380	-104.828234
	3200.00	16.05	175.22	3105.81	57.57	-703.03	58.77	0.00	1358415.83	3187328.17	40.315304	-104.828225
	3300.00	16.05	175.22	3201.91	59.83	-730.59	61.08	0.00	1358388.30	3187330.69	40.315229	-104.828217
	3400.00	16.05	175.22	3298.02	62.09	-758.14	63.38	0.00	1358360.76	3187333.20	40.315153	-104.828209
	3500.00	16.05	175.22	3394.12	64.34	-785.70	65.68	0.00	1358333.22	3187335.71	40.315077	-104.828200
	3600.00	16.05	175.22	3490.22	66.60	-813.25	67.99	0.00	1358305.69	3187338.22	40.315002	-104.828192
	3700.00	16.05	175.22	3586.32	68.86	-840.81	70.29	0.00	1358278.15	3187340.74	40.314926	-104.828184
	3800.00	16.05	175.22	3682.42	71.11	-868.36	72.59	0.00	1358250.62	3187343.25	40.314850	-104.828176
	3900.00	16.05	175.22	3778.52	73.37	-895.92	74.90	0.00	1358223.08	3187345.76	40.314775	-104.828167
	4000.00	16.05	175.22	3874.62	75.63	-923.48	77.20	0.00	1358195.54	3187348.27	40.314699	-104.828159
	4100.00	16.05	175.22	3970.72	77.88	-951.03	79.50	0.00	1358168.01	3187350.78	40.314623	-104.828151
	4200.00	16.05	175.22	4066.82	80.14	-978.59	81.81	0.00	1358140.47	3187353.30	40.314548	-104.828143
	4300.00	16.05	175.22	4162.92	82.40	-1006.14	84.11	0.00	1358112.94	3187355.81	40.314472	-104.828134
	4400.00	16.05	175.22	4259.02	84.65	-1033.70	86.42	0.00	1358085.40	3187358.32	40.314397	-104.828126
	4500.00	16.05	175.22	4355.13	86.91	-1061.25	88.72	0.00	1358057.86	3187360.83	40.314321	-104.828118
	4600.00	16.05	175.22	4451.23	89.17	-1088.81	91.02	0.00	1358030.33	3187363.34	40.314245	-104.828110
	4700.00	16.05	175.22	4547.33	91.42	-1116.36	93.33	0.00	1358002.79	3187365.86	40.314170	-104.828101
	4800.00	16.05	175.22	4643.43	93.68	-1143.92	95.63	0.00	1357975.26	3187368.37	40.314094	-104.828093
	4900.00	16.05	175.22	4739.53	95.94	-1171.47	97.93	0.00	1357947.72	3187370.88	40.314018	-104.828085
	5000.00	16.05	175.22	4835.63	98.19	-1199.03	100.24	0.00	1357920.18	3187373.39	40.313943	-104.828077
	5100.00	16.05	175.22	4931.73	100.45	-1226.58	102.54	0.00	1357892.65	3187375.90	40.313867	-104.828068
	5200.00	16.05	175.22	5027.83	102.71	-1254.14	104.84	0.00	1357865.11	3187378.42	40.313791	-104.828060
	5300.00	16.05	175.22	5123.93	104.96	-1281.70	107.15	0.00	1357837.58	3187380.93	40.313716	-104.828052
	5400.00	16.05	175.22	5220.03	107.22	-1309.25	109.45	0.00	1357810.04	3187383.44	40.313640	-104.828044
	5500.00	16.05	175.22	5316.14	109.48	-1336.81	111.75	0.00	1357782.50	3187385.95	40.313565	-104.828035
	5600.00	16.05	175.22	5412.24	111.73	-1364.36	114.06	0.00	1357754.97	3187388.47	40.313489	-104.828027
	5700.00	16.05	175.22	5508.34	113.99	-1391.92	116.36	0.00	1357727.43	3187390.98	40.313413	-104.828019
	5800.00	16.05	175.22	5604.44	116.25	-1419.47	118.67	0.00	1357699.90	3187393.49	40.313338	-104.828010
	5900.00	16.05	175.22	5700.54	118.50	-1447.03	120.97	0.00	1357672.36	3187396.00	40.313262	-104.828002
	6000.00	16.05	175.22	5796.64	120.76	-1474.58	123.27	0.00	1357644.82	3187398.51	40.313186	-104.827994
	6100.00	16.05	175.22	5892.74	123.02	-1502.14	125.58	0.00	1357617.29	3187401.03	40.313111	-104.827986
	6200.00	16.05	175.22	5988.84	125.27	-1529.69	127.88	0.00	1357589.75	3187403.54	40.313035	-104.827977
	6300.00	16.05	175.22	6084.94	127.53	-1557.25	130.18	0.00	1357562.22	3187406.05	40.312959	-104.827969
	6400.00	16.05	175.22	6181.04	129.79	-1584.81	132.49	0.00	1357534.68	3187408.56	40.312884	-104.827961
	6500.00	16.05	175.22	6277.14	132.04	-1612.36	134.79	0.00	1357507.14	3187411.07	40.312808	-104.827953
	6600.00	16.05	175.22	6373.25	134.30	-1639.92	137.09	0.00	1357479.61	3187413.59	40.312733	-104.827944
	6700.00	16.05	175.22	6469.35	136.56	-1667.47	139.40	0.00	1357452.07	3187416.10	40.312657	-104.827936
	6800.00	16.05	175.22	6565.45	138.81	-1695.03	141.70	0.00	1357424.54	3187418.61	40.312581	-104.827928
KOP, Build/Turn 9 DLS	6838.64	16.05	175.22	6602.59	139.68	-1705.68	142.59	0.00	1357413.90	3187419.58	40.312552	-104.827925
	6900.00	16.49	194.96	6661.53	143.98	-1722.55	141.05	9.00	1357397.01	3187418.17	40.312506	-104.827930
	7000.00	20.54	220.60	6756.49	163.34	-1749.64	125.94	9.00	13573			

	MD (ft)	Incl (°)	Azim True (°)	TVD (ft)	VSEC (ft)	NS (ft)	EW (ft)	DLS (°/100ft)	Northing (ftUS)	Easting (ftUS)	Latitude (°)	Longitude (°)
Bernhardt 5-11C-14-L TOP	7200.00	34.58	245.90	6933.93	245.83	-1799.87	50.67	9.00	1357319.02	3187328.38	40.312293	-104.828254
	7300.00	42.64	252.34	7012.04	306.94	-1821.77	-7.62	9.00	1357296.67	3187270.26	40.312233	-104.828463
	7400.00	50.97	257.04	7080.45	379.37	-1840.80	-77.89	9.00	1357277.11	3187200.14	40.312181	-104.828715
	7500.00	59.44	260.73	7137.47	461.37	-1856.48	-158.40	9.00	1357260.83	3187119.76	40.312138	-104.829004
	7600.00	68.01	263.82	7181.71	550.89	-1868.43	-247.17	9.00	1357248.21	3187031.08	40.312105	-104.829322
	7700.00	76.62	266.56	7212.07	645.75	-1876.35	-342.01	9.00	1357239.57	3186936.31	40.312084	-104.829662
	7800.00	85.26	269.11	7227.80	743.60	-1880.05	-440.59	9.00	1357235.12	3186837.76	40.312073	-104.830016
	7863.42	90.75	270.68	7230.00	806.10	-1880.16	-503.94	9.00	1357234.53	3186774.41	40.312073	-104.830243
	7900.00	90.75	270.68	7229.52	842.11	-1879.72	-540.52	0.00	1357234.69	3186737.84	40.312074	-104.830374
	8000.00	90.75	270.68	7228.21	940.54	-1878.53	-640.51	0.00	1357235.12	3186637.85	40.312078	-104.830733
	8100.00	90.75	270.68	7226.90	1038.97	-1877.34	-740.49	0.00	1357235.56	3186537.86	40.312081	-104.831091
	8200.00	90.75	270.68	7225.59	1137.40	-1876.14	-840.47	0.00	1357236.00	3186437.88	40.312084	-104.831450
	8300.00	90.75	270.68	7224.29	1235.83	-1874.95	-940.46	0.00	1357236.43	3186337.89	40.312087	-104.831808
	8400.00	90.75	270.68	7222.98	1334.26	-1873.75	-1040.44	0.00	1357236.87	3186237.91	40.312091	-104.832167
	8500.00	90.75	270.68	7221.67	1432.69	-1872.56	-1140.43	0.00	1357237.31	3186137.92	40.312094	-104.832525
	8600.00	90.75	270.68	7220.36	1531.11	-1871.37	-1240.41	0.00	1357237.74	3186037.93	40.312097	-104.832884
	8700.00	90.75	270.68	7219.05	1629.54	-1870.17	-1340.40	0.00	1357238.18	3185937.95	40.312100	-104.833242
	8800.00	90.75	270.68	7217.74	1727.97	-1868.98	-1440.38	0.00	1357238.62	3185837.96	40.312104	-104.833601
	8900.00	90.75	270.68	7216.43	1826.40	-1867.79	-1540.37	0.00	1357239.05	3185737.98	40.312107	-104.833959
	9000.00	90.75	270.68	7215.12	1924.83	-1866.59	-1640.35	0.00	1357239.49	3185637.99	40.312110	-104.834318
	9100.00	90.75	270.68	7213.81	2023.26	-1865.40	-1740.33	0.00	1357239.92	3185538.00	40.312113	-104.834676
	9200.00	90.75	270.68	7212.50	2121.68	-1864.21	-1840.32	0.00	1357240.36	3185438.02	40.312117	-104.835035
	9300.00	90.75	270.68	7211.20	2220.11	-1863.01	-1940.30	0.00	1357240.80	3185338.03	40.312120	-104.835393
	9400.00	90.75	270.68	7209.89	2318.54	-1861.82	-2040.29	0.00	1357241.23	3185238.05	40.312123	-104.835752
	9500.00	90.75	270.68	7208.58	2416.97	-1860.62	-2140.27	0.00	1357241.67	3185138.06	40.312126	-104.836110
	9600.00	90.75	270.68	7207.27	2515.40	-1859.43	-2240.26	0.00	1357242.11	3185038.07	40.312130	-104.836469
	9700.00	90.75	270.68	7205.96	2613.83	-1858.24	-2340.24	0.00	1357242.54	3184938.09	40.312133	-104.836827
	9800.00	90.75	270.68	7204.65	2712.26	-1857.04	-2440.22	0.00	1357242.98	3184838.10	40.312136	-104.837186
	9900.00	90.75	270.68	7203.34	2810.68	-1855.85	-2540.21	0.00	1357243.42	3184738.11	40.312139	-104.837544
	10000.00	90.75	270.68	7202.03	2909.11	-1854.66	-2640.19	0.00	1357243.85	3184638.13	40.312143	-104.837903
	10100.00	90.75	270.68	7200.72	3007.54	-1853.46	-2740.18	0.00	1357244.29	3184538.14	40.312146	-104.838262
	10200.00	90.75	270.68	7199.42	3105.97	-1852.27	-2840.16	0.00	1357244.73	3184438.16	40.312149	-104.838620
	10300.00	90.75	270.68	7198.11	3204.40	-1851.08	-2940.15	0.00	1357245.16	3184338.17	40.312152	-104.838979
	10400.00	90.75	270.68	7196.80	3302.83	-1849.88	-3040.13	0.00	1357245.60	3184238.18	40.312156	-104.839337
	10500.00	90.75	270.68	7195.49	3401.25	-1848.69	-3140.11	0.00	1357246.03	3184138.20	40.312159	-104.839696
	10600.00	90.75	270.68	7194.18	3499.68	-1847.49	-3240.10	0.00	1357246.47	3184038.21	40.312162	-104.840054
	10700.00	90.75	270.68	7192.87	3598.11	-1846.30	-3340.08	0.00	1357246.91	3183938.23	40.312165	-104.840413
	10800.00	90.75	270.68	7191.56	3696.54	-1845.11	-3440.07	0.00	1357247.34	3183838.24	40.312169	-104.840771
	10900.00	90.75	270.68	7190.25	3794.97	-1843.91	-3540.05	0.00	1357247.78	3183738.25	40.312172	-104.841130
	11000.00	90.75	270.68	7188.94	3893.40	-1842.72	-3640.04	0.00	1357248.22	3183638.27	40.312175	-104.841488
11100.00	90.75	270.68	7187.63	3991.82	-1841.53	-3740.02	0.00	1357248.65	3183538.28	40.312178	-104.841847	
11200.00	90.75	270.68	7186.33	4090.25	-1840.33	-3840.00	0.00	1357249.09	3183438.30	40.312182	-104.842205	
11300.00	90.75	270.68	7185.02	4188.68	-1839.14	-3939.99	0.00	1357249.53	3183338.31	40.312185	-104.842564	
11400.00	90.75	270.68	7183.71	4287.11	-1837.94	-4039.97	0.00	1357249.96	3183238.32	40.312188	-104.842922	
11500.00	90.75	270.68	7182.40	4385.54	-1836.75	-4139.96	0.00	1357250.40	3183138.34	40.312191	-104.843281	
11600.00	90.75	270.68	7181.09	4483.97	-1835.56	-4239.94	0.00	1357250.83	3183038.35	40.312195	-104.843639	
11700.00	90.75	270.68	7179.78	4582.40	-1834.36	-4339.93	0.00	1357251.27	3182938.37	40.312198	-104.843998	
11800.00	90.75	270.68	7178.47	4680.82	-1833.17	-4439.91	0.00	1357251.71	3182838.38	40.312201	-104.844356	
11900.00	90.75	270.68	7177.16	4779.25	-1831.98	-4539.89	0.00	1357252.14	3182738.39	40.312204	-104.844715	
12000.00	90.75	270.68	7175.85	4877.68	-1830.78	-4639.88	0.00	1357252.58	3182638.41	40.312207	-104.845073	
12100.00	90.75	270.68	7174.54	4976.11	-1829.59	-4739.86	0.00	1357253.02	3182538.42	40.312211	-104.845432	
12200.00	90.75	270.68	7173.24	5074.54	-1828.40	-4839.85	0.00	1357253.45	3182438.44	40.312214	-104.845790	
12300.00	90.75	270.68	7171.93	5172.97	-1827.20	-4939.83	0.00	1357253.89	3182338.45	40.312217	-104.846149	
12400.00	90.75	270.68	7170.62	5271.39	-1826.01	-5039.82	0.00	1357254.33	3182238.46	40.312220	-104.846507	
12500.00	90.75	270.68	7169.31	5369.82	-1824.81	-5139.80	0.00	1357254.76	3182138.48	40.312224	-104.846866	
12600.00	90.75	270.68	7168.00	5468.25	-1823.62	-5239.78	0.00	1357255.20	3182038.49	40.312227	-104.847224	
12700.00	90.75	270.68	7166.69	5566.68	-1822.43	-5339.77	0.00	1357255.64	3181938.51	40.312230	-104.847583	
12800.00	90.75	270.68	7165.38	5665.11	-1821.23	-5439.75	0.00	1357256.07	3181838.52	40.312233	-104.847941	
12900.00	90.75	270.68	7164.07	5763.54	-1820.04	-5539.74	0.00	1357256.51	3181738.53	40.312236	-104.848300	
13000.00	90.75	270.68	7162.76	5861.97	-1818.85	-5639.72	0.00	1357256.94	3181638.55	40.312240	-104.848659	
13100.00	90.75	270.68	7161.46	5960.39	-1817.65	-5739.71	0.00	1357257.38	3181538.56	40.312243	-104.849017	
13200.00	90.75	270.68	7160.15	6058.82	-1816.46	-5839.69	0.00	1357257.82	3181438.58	40.312246	-104.849376	
13300.00	90.75	270.68	7158.84	6157.25	-1815.26	-5939.67	0.00	1357258.25	3181338.59	40.312249	-104.849734	
End of Hold, Build/Turn 2 DLS	13363.42	90.75	270.68	7158.01	6219.67	-1814.51	-6003.08	0.00	1357258.53	3181275.18	40.312251	-104.849961
Hold	13374.07	90.96	270.65	7157.85	6230.16	-1814.38	-6013.74	2.00	1357258.57	3181264.53	40.312252	-104.850000
	13400.00	90.96	270.65	7157.41	6255.68	-1814.						

Comments	MD (ft)	Incl (°)	Azim True (°)	TVD (ft)	VSEC (ft)	NS (ft)	EW (ft)	DLS (°/100ft)	Northing (ftUS)	Easting (ftUS)	Latitude (°)	Longitude (°)
	17500.00	90.96	270.65	7088.71	10291.48	-1767.72	-10138.82	0.00	1357274.00	3177139.39	40.312376	-104.864791
	17600.00	90.96	270.65	7087.04	10389.91	-1766.58	-10238.80	0.00	1357274.37	3177039.41	40.312379	-104.865150
	17700.00	90.96	270.65	7085.36	10488.35	-1765.45	-10338.78	0.00	1357274.75	3176939.43	40.312382	-104.865508
	17800.00	90.96	270.65	7083.68	10586.78	-1764.32	-10438.76	0.00	1357275.12	3176839.45	40.312385	-104.865867
KOP, Drop/Turn 1.92 DLS	17840.85	90.96	270.65	7083.00	10626.99	-1763.86	-10479.60	0.00	1357275.27	3176798.61	40.312386	-104.866013
	17900.00	89.83	270.60	7082.59	10685.22	-1763.22	-10538.74	1.92	1357275.47	3176739.46	40.312388	-104.866225
Bernhardt 5-11C- 14-L BHL	17940.95	89.04	270.56	7083.00	10725.55	-1762.80	-10579.69	1.92	1357275.57	3176698.51	40.312389	-104.866372

Survey Type: Def Plan

Survey Error Model: ISCWSA Rev 0 *** 3-D 95.000% Confidence 2.7955 sigma
Survey Program:

Description	Part	MD From (ft)	MD To (ft)	EOU Freq (ft)	Hole Size (in)	Casing Diameter (in)	Expected Max Inclination (deg)	Survey Tool Type	Borehole / Survey
	1	0.000	2.000	1/100.000	13.500	9.625		NAL_MWD_IFR1-Depth Only	Original Hole / Bernhardt 5-11C- 14-L R0 mdv 17Sept19
	1	2.000	1800.000	1/100.000	13.500	9.625		NAL_MWD_IFR1	Original Hole / Bernhardt 5-11C- 14-L R0 mdv 17Sept19
	1	1800.000	17940.954	1/100.000	8.500	5.500		NAL_MWD_IFR1+MS	Original Hole / Bernhardt 5-11C- 14-L R0 mdv 17Sept19