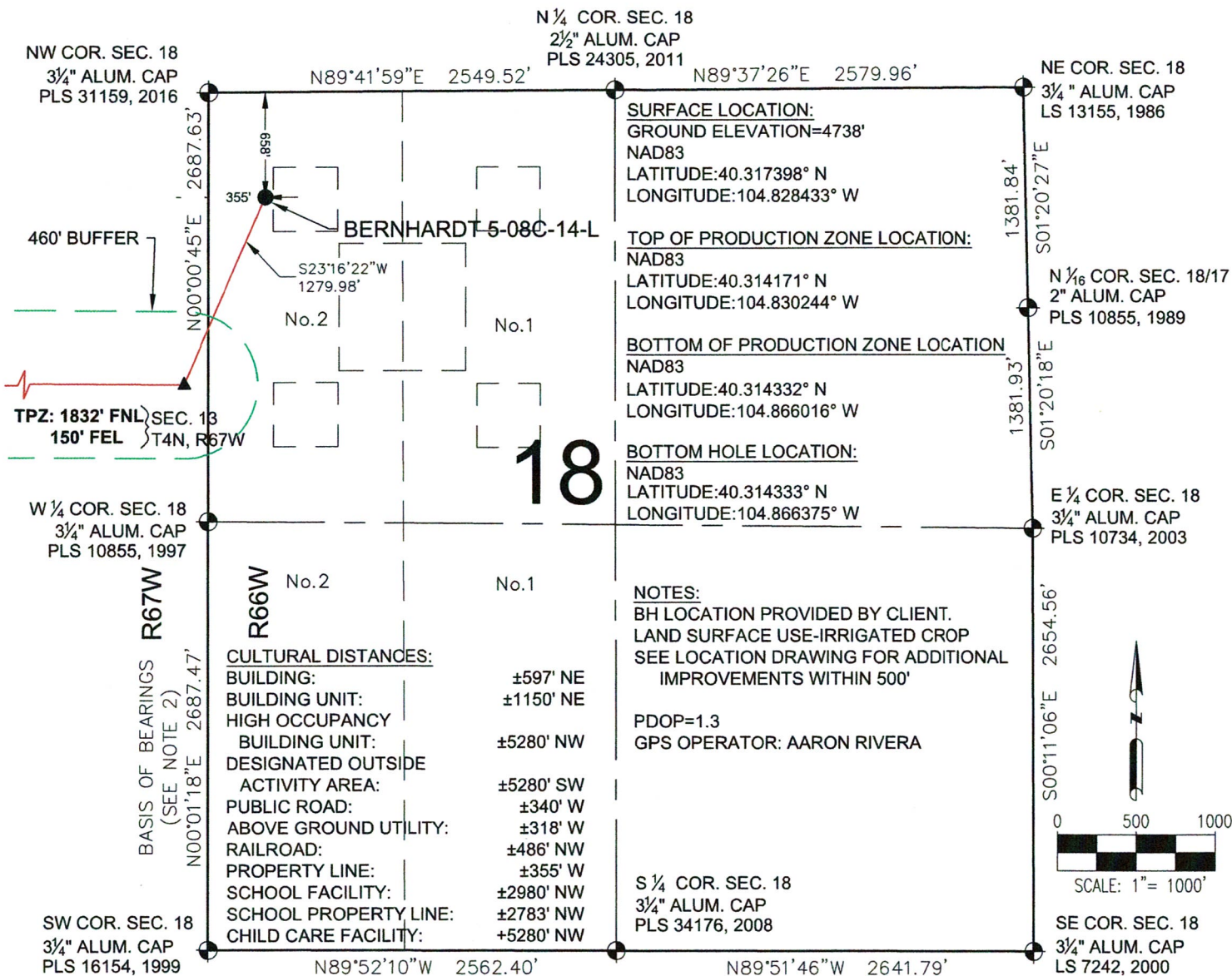


# BERNHARDT 5-08C-14-L WELL LOCATION CERTIFICATE



## LEGEND

- |                         |                                 |
|-------------------------|---------------------------------|
| ● = EXISTING MONUMENT   | △ = BOTTOM OF PRODUCTION ZONE   |
| ○ = CALCULATED POSITION | ▲ = TOP OF PRODUCTION ZONE      |
| ● = PROPOSED WELL       | TPZ = TOP OF PRODUCTION ZONE    |
| ◆ = EXISTING WELL       | BHL = BOTTOM HOLE LOCATION      |
| ◆ = BOTTOM HOLE         | BPZ = BOTTOM OF PRODUCTION ZONE |

## NOTES:

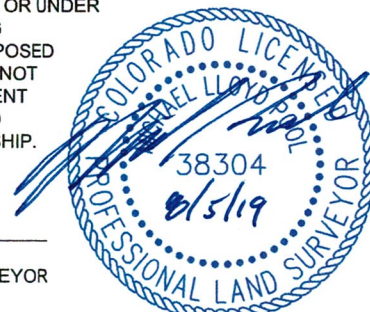
- THIS FIELD SURVEY CONFORMS TO THE MINIMUM STANDARDS SET BY THE C.O.G.C.C., RULE NO. 215
- BEARINGS ARE BASED ON THE ASSUMPTION THAT THE WEST LINE OF THE SOUTHWEST QUARTER OF SECTION 18, BEARS N00°01'18"E BETWEEN THE MONUMENTS SHOWN HEREON.
- ALL DISTANCES AND BEARINGS SHOWN HEREON ARE GROUND VALUES AS GPS MEASURED IN THE FIELD, WITH TIES TO WELLS MEASURED PERPENDICULAR TO SECTION LINES. THIS LOW DISTORTION PROJECTION (LDP) IS BASED ON THE NORTH AMERICAN DATUM OF 1983, U.S. SURVEY FOOT WITH A LATITUDE ORIGIN OF 40.304428°N, A CENTRAL MERIDIAN LONGITUDE OF 104.773161°W, AND A SCALE FACTOR ON THE CENTRAL MERIDIAN OF 1.000224 (EXACT). THE LDP BASIS OF BEARINGS IS GEODETIC NORTH.
- FIELD VERIFICATION OF MONUMENTS COMPLETED ON 11-1-16 THRU 11-2-16, EXCEPT NORTH LINE OF SECTION 13 COMPLETED ON 3-7-17.

NOTICE: ACCORDING TO COLORADO LAW YOU MUST COMMENCE ANY LEGAL ACTION BASED UPON ANY DEFECT IN THIS SURVEY WITHIN THREE YEARS AFTER YOU FIRST DISCOVER SUCH DEFECT. IN NO EVENT MAY ANY ACTION BASED UPON ANY DEFECT IN THIS SURVEY BE COMMENCED MORE THAN TEN YEARS FROM THIS SAID DATE OF THIS CERTIFICATION SHOWN HEREON.

## WELL BERNHARDT 5-08C-14-L TO BE LOCATED 658' FNL & 355' FWL

SURVEYOR IN THE STATE OF COLORADO DO HEREBY CERTIFY TO **SRC ENERGY, INC.** THAT THE SURVEY AND WELL LOCATION CERTIFICATE SHOWN HEREON WERE DONE BY ME OR UNDER MY DIRECT SUPERVISION AND THAT THE DRAWING SHOWN HEREON ACCURATELY DEPICTS THE PROPOSED LOCATION OF THE WELL. THIS CERTIFICATE DOES NOT REPRESENT A LAND SURVEY PLAT OR IMPROVEMENT SURVEY PLAT AS DEFINED BY C.R.S. 38-51-102 AND CANNOT BE RELIED UPON TO DETERMINE OWNERSHIP.

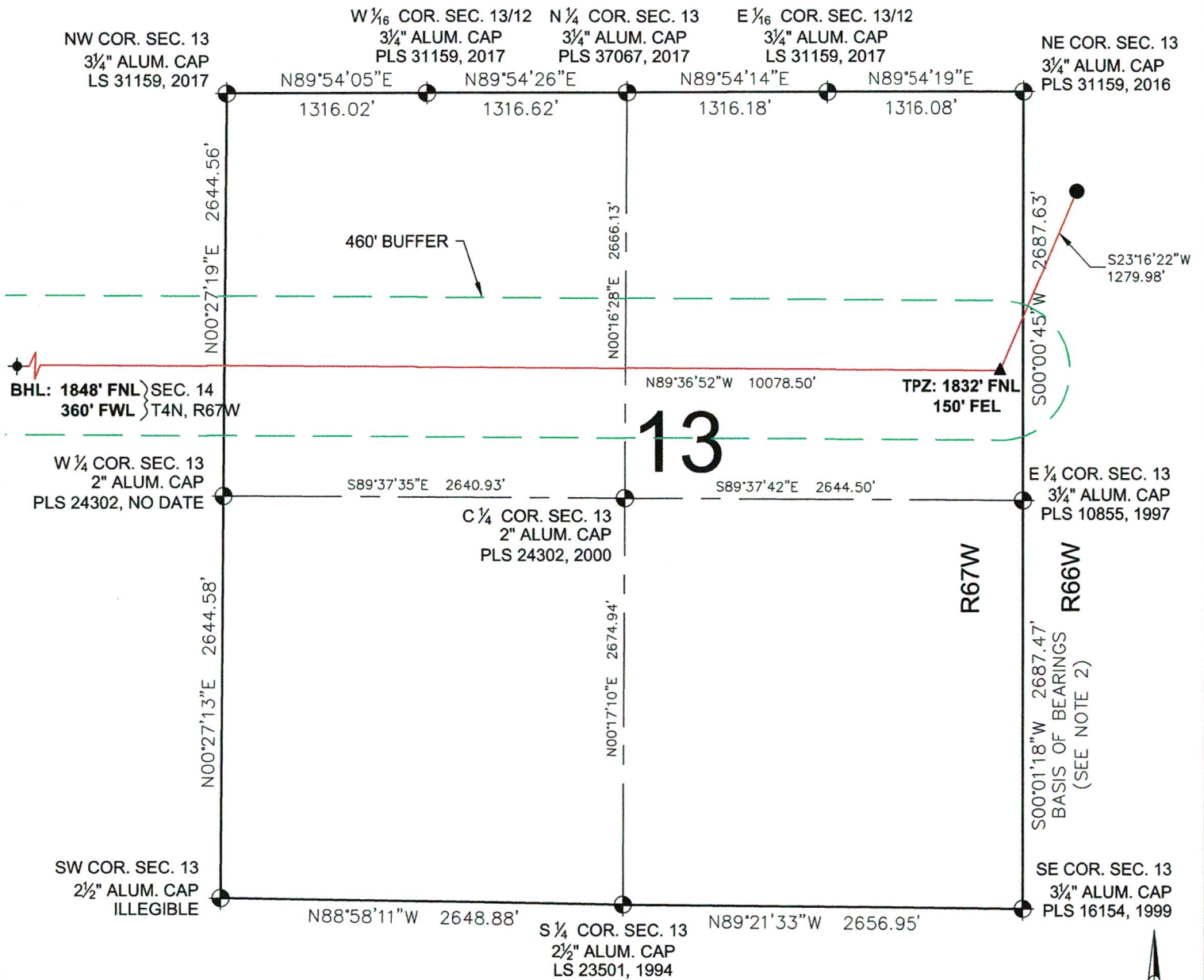
MICHAEL L. POOL, PLS 38304  
COLORADO LICENSED PROFESSIONAL LAND SURVEYOR  
FOR AND ON BEHALF OF P.F.S., LLC



SHEET 1 OF 3



# BERNHARDT 5-08C-14-L WELL LOCATION CERTIFICATE



## LEGEND

- ⊕ = EXISTING MONUMENT      △ = BOTTOM OF PRODUCTION ZONE
- = CALCULATED POSITION      ▲ = TOP OF PRODUCTION ZONE
- = PROPOSED WELL      TPZ = TOP OF PRODUCTION ZONE
- ◆ = EXISTING WELL      BHL = BOTTOM HOLE LOCATION
- ⊙ = BOTTOM HOLE      BPZ = BOTTOM OF PRODUCTION ZONE

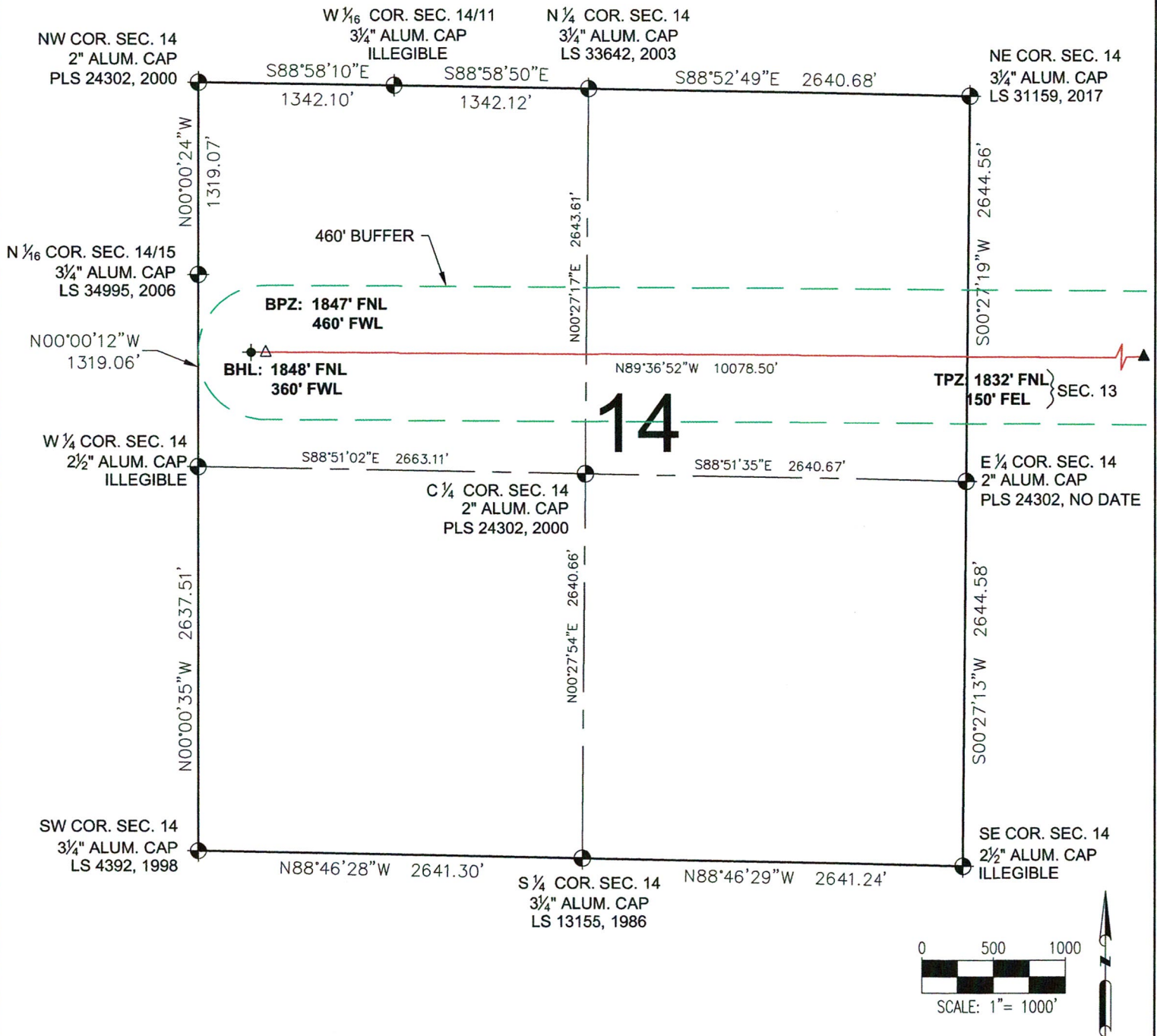
MICHAEL L. POOL, PLS 38304  
COLORADO LICENSED PROFESSIONAL LAND SURVEYOR  
FOR AND ON BEHALF OF P.F.S., LLC



SHEET 2 OF 3

<b>PREPARED BY:</b>  8520 Wolff Court Westminster, CO 80031 (303) 928-7128 <a href="http://www.ascentgeomatics.com">www.ascentgeomatics.com</a>	<b>FIELD DATE:</b> 11-10-16	<b>WELL NAME:</b> BERNHARDT 5-08C-14-L	<b>PREPARED FOR:</b> SRC ENERGY
	<b>DRAWING DATE:</b> 08-02-19	<b>SURFACE LOCATION:</b> LOT 2 NW 1/4 SEC. 18, T4N, R66W, 6TH P.M. WELD COUNTY, COLORADO	
<b>BY:</b> DNS		<b>CHECKED BY:</b> JW	

# BERNHARDT 5-08C-14-L WELL LOCATION CERTIFICATE



## LEGEND

- ⊕ = EXISTING MONUMENT
- = CALCULATED POSITION
- = PROPOSED WELL
- ◆ = EXISTING WELL
- ⬢ = BOTTOM HOLE
- △ = BOTTOM OF PRODUCTION ZONE
- ▲ = TOP OF PRODUCTION ZONE
- TPZ = TOP OF PRODUCTION ZONE
- BHL = BOTTOM HOLE LOCATION
- BPZ = BOTTOM OF PRODUCTION ZONE

MICHAEL L. POOL, PLS 38304  
COLORADO LICENSED PROFESSIONAL LAND SURVEYOR  
FOR AND ON BEHALF OF P.F.S., LLC



SHEET 3 OF 3



8620 Wolff Court  
Westminster, CO 80031  
(303) 928-7128  
www.ascentgeomatics.com

FIELD DATE:  
11-10-16

DRAWING DATE:  
08-02-19

BY:  
DNS

CHECKED BY:  
JW

WELL NAME:  
BERNHARDT 5-08C-14-L

SURFACE LOCATION:

LOT 2 NW 1/4 SEC. 18, T4N, R66W, 6TH P.M.  
WELD COUNTY, COLORADO

PREPARED FOR:



SRC ENERGY