



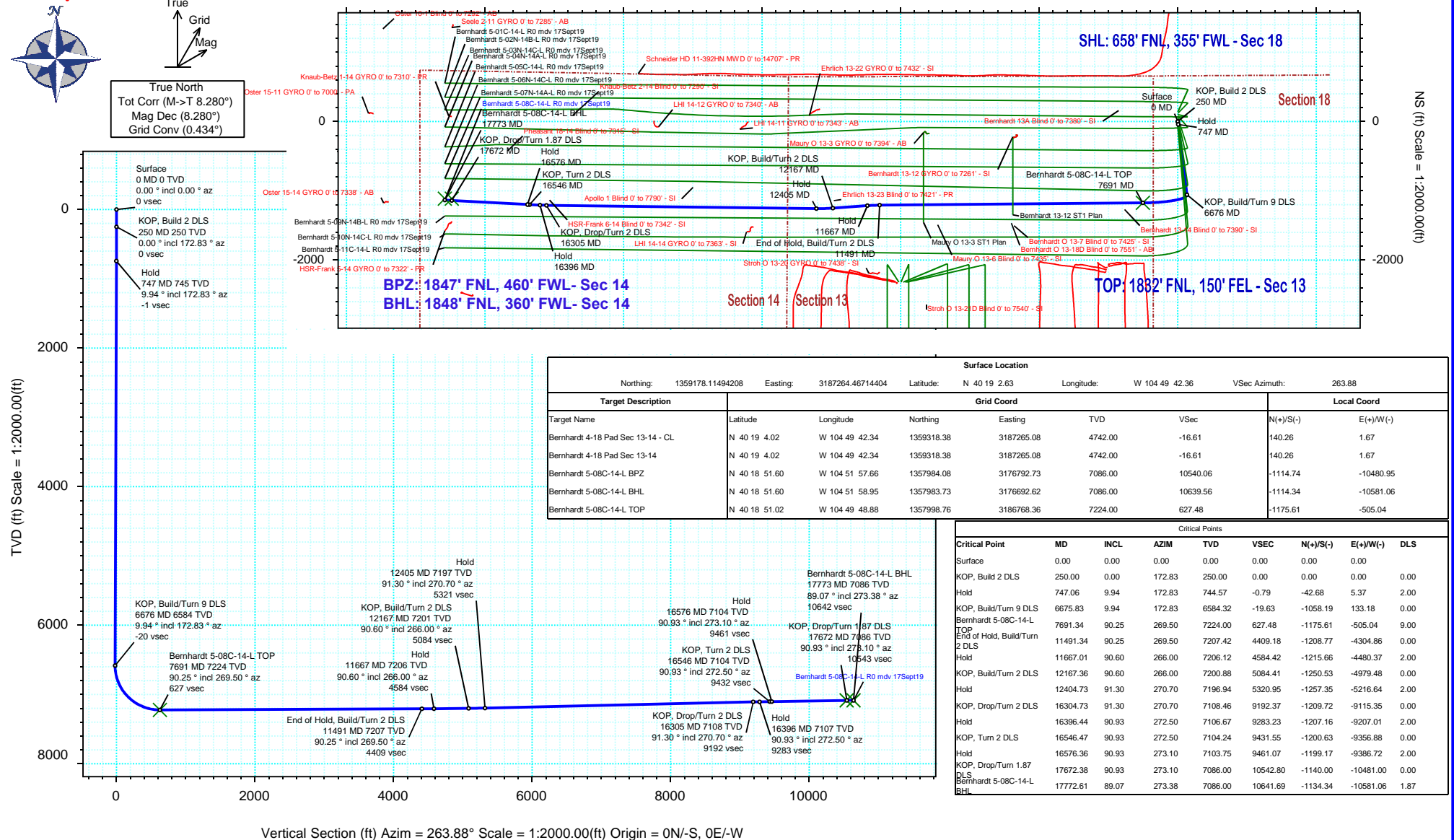
# SRC Energy

## Rev 0

# Schlumberger

Borehole:		Well:	Field:	Structure:
Original Hole		Bernhardt 5-08C-14-L	CO, Weld County (NAD 83 NZ) - SRC	SRC Energy 18-04N-66W (Bernhardt 4-18 Pad)
Gravity & Magnetic Parameters			Surface Location	Miscellaneous
Model:	HDGM 2019	Dip: 66.674°	NAD83 Colorado State Plane, Northern Zone, US Feet	Slot: Bernhardt 5-08C-14-L
MagDec:	8.28°	Date: 17-Sep-2019	Lat: N 40 19 2.63	TVD Ref: KB 4ft(4742ft above MSL)
	FS: 52145.206nT	Gravity FS: 999.023mgn (9.80665 Based)	North: 1359178.11ftUS	Plan: Bernhardt 5-08C-14-L R0 mdv 17Sept19
			Lon: W 104 49 42.36	
			Easting: 3187264.47ftUS	
			Scale Fact: 0.99995752	

## Proposal





## Bernhardt 5-08C-14-L R0 mdv 17Sept19 Proposal Geodetic Report

(Def Plan)

**Report Date:** September 23, 2019 - 01:58 PM  
**Client:** SRC Energy  
**Field:** CO, Weld County (NAD 83 NZ) - SRC  
**Structure / Slot:** SRC Energy 18-04N-66W (Bernhardt 4-18 Pad) / Bernhardt 5-08C-14-L  
**Well:** Bernhardt 5-08C-14-L  
**Borehole:** Original Hole  
**UWI / API#:** Unknown / Unknown  
**Survey Name:** Bernhardt 5-08C-14-L R0 mdv 17Sept19  
**Survey Date:** September 17, 2019  
**Tort / AHD / DDI / ERD Ratio:** 113.907 ° / 11813.157 ft / 6.520 / 1.635  
**Coordinate Reference System:** NAD83 Colorado State Plane, Northern Zone, US Feet  
**Location Lat / Long:** N 40° 19' 2.63280", W 104° 49' 42.35880"  
**Location Grid N/E Y/X:** N 1359178.115 ftUS, E 3187264.467 ftUS  
**CRS Grid Convergence Angle:** 0.4339 °  
**Grid Scale Factor:** 0.99995752  
**Version / Patch:** 2.10.782.0

**Survey / DLS Computation:** Minimum Curvature / Lubinski  
**Vertical Section Azimuth:** 263.881 ° (True North)  
**Vertical Section Origin:** 0.000 ft, 0.000 ft  
**TVD Reference Datum:** KB 4ft  
**TVD Reference Elevation:** 4742.000 ft above MSL  
**Seabed / Ground Elevation:** 4738.000 ft above MSL  
**Magnetic Declination:** 8.280 °  
**Total Gravity Field Strength:** 999.0229mgn (9.80665 Based)  
**Gravity Model:** GARM  
**Total Magnetic Field Strength:** 52145.206 nT  
**Magnetic Dip Angle:** 66.674 °  
**Declination Date:** September 17, 2019  
**Magnetic Declination Model:** HDGM 2019  
**North Reference:** True North  
**Grid Convergence Used:** 0.0000 °  
**Total Corr Mag North->True North:** 8.2803 °  
**Local Coord Referenced To:** Well Head

Comments	MD (ft)	Incl (°)	Azim True (°)	TVD (ft)	VSEC (ft)	NS (ft)	EW (ft)	DLS (°/100ft)	Northing (ftUS)	Easting (ftUS)	Latitude (°)	Longitude (°)
Surface	0.00	0.00	0.00	0.00	0.00	0.00	0.00	N/A	1359178.11	3187264.47	40.317398	-104.828433
	100.00	0.00	172.83	100.00	0.00	0.00	0.00	0.00	1359178.11	3187264.47	40.317398	-104.828433
	200.00	0.00	172.83	200.00	0.00	0.00	0.00	0.00	1359178.11	3187264.47	40.317398	-104.828433
KOP, Build 2 DLS	250.00	0.00	172.83	250.00	0.00	0.00	0.00	0.00	1359178.11	3187264.47	40.317398	-104.828433
	300.00	1.00	172.83	300.00	-0.01	-0.43	0.05	2.00	1359177.68	3187264.52	40.317397	-104.828433
	400.00	3.00	172.83	399.93	-0.07	-3.90	0.49	2.00	1359174.22	3187264.99	40.317387	-104.828431
	500.00	5.00	172.83	499.68	-0.20	-10.82	1.36	2.00	1359167.31	3187265.91	40.317368	-104.828428
	600.00	7.00	172.83	599.13	-0.39	-21.19	2.67	2.00	1359156.95	3187267.29	40.317340	-104.828423
	700.00	9.00	172.83	698.15	-0.65	-34.99	4.40	2.00	1359143.16	3187269.14	40.317302	-104.828417
Hold	747.06	9.94	172.83	744.57	-0.79	-42.68	5.37	2.00	1359135.48	3187270.16	40.317281	-104.828414
	800.00	9.94	172.83	796.71	-0.96	-51.74	6.51	0.00	1359126.42	3187271.37	40.317256	-104.828410
	900.00	9.94	172.83	895.21	-1.28	-68.87	8.67	0.00	1359109.31	3187273.66	40.317209	-104.828402
	1000.00	9.94	172.83	993.71	-1.60	-86.00	10.82	0.00	1359092.20	3187275.94	40.317162	-104.828394
	1100.00	9.94	172.83	1092.21	-1.91	-103.13	12.98	0.00	1359075.09	3187278.23	40.317115	-104.828386
	1200.00	9.94	172.83	1190.71	-2.23	-120.26	15.14	0.00	1359057.98	3187280.51	40.317068	-104.828379
	1300.00	9.94	172.83	1289.21	-2.55	-137.39	17.29	0.00	1359040.87	3187282.80	40.317021	-104.828371
	1400.00	9.94	172.83	1387.71	-2.87	-154.52	19.45	0.00	1359023.76	3187285.08	40.316974	-104.828363
	1500.00	9.94	172.83	1486.20	-3.18	-171.64	21.60	0.00	1359006.65	3187287.37	40.316927	-104.828356
	1600.00	9.94	172.83	1584.70	-3.50	-188.77	23.76	0.00	1358989.54	3187289.65	40.316880	-104.828348
	1700.00	9.94	172.83	1683.20	-3.82	-205.90	25.91	0.00	1358972.42	3187291.94	40.316833	-104.828340
	1800.00	9.94	172.83	1781.70	-4.14	-223.03	28.07	0.00	1358955.31	3187294.22	40.316786	-104.828332
	1900.00	9.94	172.83	1880.20	-4.45	-240.16	30.23	0.00	1358938.20	3187296.51	40.316739	-104.828325
	2000.00	9.94	172.83	1978.70	-4.77	-257.29	32.38	0.00	1358921.09	3187298.80	40.316692	-104.828317
	2100.00	9.94	172.83	2077.20	-5.09	-274.42	34.54	0.00	1358903.98	3187301.08	40.316645	-104.828309
	2200.00	9.94	172.83	2175.69	-5.41	-291.54	36.69	0.00	1358886.87	3187303.37	40.316598	-104.828301
	2300.00	9.94	172.83	2274.19	-5.73	-308.67	38.85	0.00	1358869.76	3187305.65	40.316551	-104.828294
	2400.00	9.94	172.83	2372.69	-6.04	-325.80	41.01	0.00	1358852.65	3187307.94	40.316504	-104.828286
	2500.00	9.94	172.83	2471.19	-6.36	-342.93	43.16	0.00	1358835.54	3187310.22	40.316457	-104.828278
	2600.00	9.94	172.83	2569.69	-6.68	-360.06	45.32	0.00	1358818.43	3187312.51	40.316410	-104.828270
	2700.00	9.94	172.83	2668.19	-7.00	-377.19	47.47	0.00	1358801.32	3187314.79	40.316363	-104.828263
	2800.00	9.94	172.83	2766.69	-7.31	-394.32	49.63	0.00	1358784.20	3187317.08	40.316316	-104.828255
	2900.00	9.94	172.83	2865.18	-7.63	-411.44	51.78	0.00	1358767.09	3187319.36	40.316269	-104.828247
	3000.00	9.94	172.83	2963.68	-7.95	-428.57	53.94	0.00	1358749.98	3187321.65	40.316222	-104.828240
	3100.00	9.94	172.83	3062.18	-8.27	-445.70	56.10	0.00	1358732.87	3187323.93	40.316175	-104.828232
	3200.00	9.94	172.83	3160.68	-8.59	-462.83	58.25	0.00	1358715.76	3187326.22	40.316128	-104.828224
	3300.00	9.94	172.83	3259.18	-8.90	-479.96	60.41	0.00	1358698.65	3187328.51	40.316081	-104.828216
	3400.00	9.94	172.83	3357.68	-9.22	-497.09	62.56	0.00	1358681.54	3187330.79	40.316034	-104.828209
	3500.00	9.94	172.83	3456.18	-9.54	-514.21	64.72	0.00	1358664.43	3187333.08	40.315987	-104.828201
	3600.00	9.94	172.83	3554.67	-9.86	-531.34	66.88	0.00	1358647.32	3187335.36	40.315939	-104.828193
	3700.00	9.94	172.83	3653.17	-10.17	-548.47	69.03	0.00	1358630.21	3187337.65	40.315892	-104.828185
	3800.00	9.94	172.83	3751.67	-10.49	-565.60	71.19	0.00	1358613.09	3187339.93	40.315845	-104.828178
	3900.00	9.94	172.83	3850.17	-10.81	-582.73	73.34	0.00	1358595.98	3187342.22	40.315798	-104.828170
	4000.00	9.94	172.83	3948.67	-11.13	-599.86	75.50	0.00	1358578.87	3187344.50	40.315751	-104.828162
	4100.00	9.94	172.83	4047.17	-11.45	-616.99	77.65	0.00	1358561.76	3187346.79	40.315704	-104.828155
	4200.00	9.94	172.83	4145.67	-11.76	-634.11	79.81	0.00	1358544.65	3187349.07	40.315657	-104.828147
	4300.00	9.94	172.83	4244.16	-12.08	-651.24	81.97	0.00	1358527.54	3187351.36	40.315610	-104.828139
	4400.00	9.94	172.83	4342.66	-12.40	-668.37	84.12	0.00	1358510.43	3187353.64	40.315563	-104.828131
	4500.00	9.94	172.83	4441.16	-12.72	-685.50	86.28	0.00	1358493.32	3187355.93	40.315516	-104.828124
	4600.00	9.94	172.83	4539.66	-13.03	-702.63	88.43	0.00	1358476.21	3187358.22	40.315469	-104.828116
	4700.00	9.94	172.83	4638.16	-13.35	-719.76	90.59	0.00	1358459.10	3187360.50	40.315422	-104.828108
	4800.00	9.94	172.83	4736.66	-13.67	-736.89	92.75	0.00	1358441.99	3187362.79	40.315375	-104.828100
	4900.00	9.94	172.83	4835.16	-13.99	-754.01	94.90	0.00	1358424.87	3187365.07	40.315328	-104.828093
	5000.00	9.94	172.83	4933.65	-14.30	-771.14	97.06	0.00	1358407.76	3187367.36	40.315281	-104.828085
	5100.00	9.94	172.83	5032.15	-14.62	-788.27	99.21	0.00	1358390.65	3187369.64	40.315234	-104.828077
	5200.00	9.94	172.83	5130.65	-14.94	-805.40	101.37	0.00	1358373.54	3187371.93	40.315187	-104.828070
	5300.00	9.94	172.83	5229.15	-15.26	-822.53	103.52	0.00	1358356.43	3187374.21	40.315140	-104.828062
	5400.00	9.94	172.83	5327.65	-15.58	-839.66	105.68	0.00	1358339.32	3187376.50	40.315093	-104.828054
	5500.00	9.94	172.83	5426.15	-15.89	-856.79	107.84	0.00	1358322.21	3187378.78	40.315046	-104.828046
	5600.00	9.94	172.83	5524.65	-16.21	-873.91	109.99	0.00	1358305.10	3187381.07	40.314999	-104.828039
	5700.00	9.94	172.83	5623.14	-16.53	-891.04	112.15	0.00	1358287.99	3187383.35	40.314952	-104.828031
	5800.00	9.94	172.83	5721.64	-16.85	-908.17	114.30	0.00	1358270.88	3187385.64	40.314905	-104.828023
	5900.00	9.94	172.83	5820.14	-17.16	-925.30	116.46	0.00	1358253.76	3187387.92	40.314858	-104.828015
	6000.00	9.94	172.83	5918.64	-17.48	-942.43	118.61	0.00	1358236.65	3187390.21	40.314811	-104.828008
	6100.00	9.94	172.83	6017.14	-17.80	-959.56	120.77	0.00	1358219.54	3187392.50	40.314764	-104.828000
	6200.00	9.94	172.83	6115.64	-18.12	-976.69	122.93	0.00	1358202.43	3187394.78	40.314717	-104.827992
	6300.00	9.94	172.83	6214.14	-18.44	-993.81	125.08	0.00	1358185.32	3187397.07	40.314670	-104.827984
	6400.00	9.94	172.83	6312.63	-18.75	-1010.94	127.24	0.00	1358168.21	3187399.35	40.314623	-104.827977
	6500.00	9.94	172.83	6411.13	-19.07	-1028.07	129.39	0.00	1358151.10	3187401.64	40.314576	-104.827969
	6600.00	9.94	172.83	6509.63	-19.39	-1045.20	131.55	0.00	1358133.99	3187403.92	40.314529	-104.827961
KOP, Build/Turn 9 DLS	6675.83	9.94	172.83	6584.32	-19.63	-1058.19	133.18	0.00	1358121.01	3187405.66	40.314493	-104.827955
	6700.00	9.93	185.46	6608.13	-19.25	-1062.33	133.25	9.00	1358116.87	3187405.75	40.314482	-104.827955
	6800.00	14.04	225.35	6706.09	-8.00	-1079.48	123.78	9.00	1358099.65	3187396.41	40.314435	-104.827989
	6900.00	21.36	243.02	6801.36	18.56	-1096.30	98.87	9.00	1358082.64	3187371.63	40.314389	-104.828078
	7000.00	29.59	251.60	6891.59	59.78	-1112.39	59.13	9.00	1358066.26	3187332.02	40.314345	-104.828221
	7100.00	38.14	256.65	6974.56	114.66	-1127.34	5.54	9.00	1358050.90	31		

	MD	Incl	Azim True	TVD	VSEC	NS	EW	DLS	Northing	Easting	Latitude	Longitude
	(ft)	(°)	(°)	(ft)	(ft)	(ft)	(ft)	(°/100ft)	(ftUS)	(ftUS)	(°)	(°)
Bernhardt 5-08C-14-L TOP	7200.00	46.85	260.06	7048.23	181.83	-1140.79	-60.57	9.00	1358036.94	3187212.54	40.314267	-104.828650
	7300.00	55.63	262.62	7110.79	259.64	-1152.42	-137.58	9.00	1358024.74	3187135.62	40.314235	-104.828926
	7400.00	64.45	264.68	7160.69	346.18	-1161.92	-223.60	9.00	1358014.59	3187049.68	40.314209	-104.829235
	7500.00	73.29	266.46	7196.71	439.32	-1169.07	-316.50	9.00	1358006.73	3186956.84	40.314189	-104.829568
	7600.00	82.15	268.08	7217.95	536.76	-1173.70	-414.01	9.00	1358001.37	3186859.38	40.314176	-104.829918
	7691.34	90.25	269.50	7224.00	627.48	-1175.61	-505.04	9.00	1357998.76	3186768.36	40.314171	-104.830244
	7700.00	90.25	269.50	7223.96	636.10	-1175.69	-513.71	0.00	1357998.62	3186759.70	40.314171	-104.830275
	7800.00	90.25	269.50	7223.53	735.62	-1176.56	-613.70	0.00	1357996.99	3186659.72	40.314168	-104.830634
	7900.00	90.25	269.50	7223.09	835.14	-1177.43	-713.70	0.00	1357995.36	3186559.74	40.314166	-104.830992
	8000.00	90.25	269.50	7222.65	934.66	-1178.31	-813.69	0.00	1357993.73	3186459.76	40.314164	-104.831351
	8100.00	90.25	269.50	7222.22	1034.18	-1179.18	-913.69	0.00	1357992.10	3186359.78	40.314161	-104.831709
	8200.00	90.25	269.50	7221.78	1133.69	-1180.05	-1013.68	0.00	1357990.47	3186259.79	40.314159	-104.832068
	8300.00	90.25	269.50	7221.34	1233.21	-1180.92	-1113.68	0.00	1357988.84	3186159.81	40.314156	-104.832426
	8400.00	90.25	269.50	7220.91	1332.73	-1181.80	-1213.67	0.00	1357987.21	3186059.83	40.314154	-104.832785
	8500.00	90.25	269.50	7220.47	1432.25	-1182.67	-1313.67	0.00	1357985.58	3185959.85	40.314152	-104.833144
	8600.00	90.25	269.50	7220.04	1531.77	-1183.54	-1413.66	0.00	1357983.95	3185859.87	40.314149	-104.833502
	8700.00	90.25	269.50	7219.60	1631.29	-1184.41	-1513.66	0.00	1357982.32	3185759.89	40.314147	-104.833861
	8800.00	90.25	269.50	7219.16	1730.81	-1185.29	-1613.65	0.00	1357980.69	3185659.91	40.314144	-104.834219
	8900.00	90.25	269.50	7218.73	1830.32	-1186.16	-1713.65	0.00	1357979.06	3185559.93	40.314142	-104.834578
	9000.00	90.25	269.50	7218.29	1929.84	-1187.03	-1813.65	0.00	1357977.43	3185459.94	40.314139	-104.834936
9100.00	90.25	269.50	7217.85	2029.36	-1187.91	-1913.64	0.00	1357975.80	3185359.96	40.314137	-104.835295	
9200.00	90.25	269.50	7217.42	2128.88	-1188.78	-2013.64	0.00	1357974.17	3185259.98	40.314135	-104.835654	
9300.00	90.25	269.50	7216.98	2228.40	-1189.65	-2113.63	0.00	1357972.54	3185160.00	40.314132	-104.836012	
9400.00	90.25	269.50	7216.54	2327.92	-1190.52	-2213.63	0.00	1357970.91	3185060.02	40.314130	-104.836371	
9500.00	90.25	269.50	7216.11	2427.44	-1191.40	-2313.62	0.00	1357969.29	3184960.04	40.314127	-104.836729	
9600.00	90.25	269.50	7215.67	2526.95	-1192.27	-2413.62	0.00	1357967.66	3184860.06	40.314125	-104.837088	
9700.00	90.25	269.50	7215.24	2626.47	-1193.14	-2513.61	0.00	1357966.03	3184760.07	40.314123	-104.837446	
9800.00	90.25	269.50	7214.80	2725.99	-1194.01	-2613.61	0.00	1357964.40	3184660.09	40.314120	-104.837805	
9900.00	90.25	269.50	7214.36	2825.51	-1194.89	-2713.60	0.00	1357962.77	3184560.11	40.314118	-104.838164	
10000.00	90.25	269.50	7213.93	2925.03	-1195.76	-2813.60	0.00	1357961.14	3184460.13	40.314115	-104.838522	
10100.00	90.25	269.50	7213.49	3024.55	-1196.63	-2913.59	0.00	1357959.51	3184360.15	40.314113	-104.838881	
10200.00	90.25	269.50	7213.05	3124.07	-1197.50	-3013.59	0.00	1357957.88	3184260.17	40.314110	-104.839239	
10300.00	90.25	269.50	7212.62	3223.58	-1198.38	-3113.58	0.00	1357956.25	3184160.19	40.314108	-104.839598	
10400.00	90.25	269.50	7212.18	3323.10	-1199.25	-3213.58	0.00	1357954.62	3184060.21	40.314106	-104.839956	
10500.00	90.25	269.50	7211.74	3422.62	-1200.12	-3313.57	0.00	1357952.99	3183960.22	40.314103	-104.840315	
10600.00	90.25	269.50	7211.31	3522.14	-1201.00	-3413.57	0.00	1357951.36	3183860.24	40.314101	-104.840673	
10700.00	90.25	269.50	7210.87	3621.66	-1201.87	-3513.56	0.00	1357949.73	3183760.26	40.314098	-104.841032	
10800.00	90.25	269.50	7210.44	3721.18	-1202.74	-3613.56	0.00	1357948.10	3183660.28	40.314096	-104.841391	
10900.00	90.25	269.50	7210.00	3820.70	-1203.61	-3713.55	0.00	1357946.47	3183560.30	40.314093	-104.841749	
11000.00	90.25	269.50	7209.56	3920.21	-1204.49	-3813.55	0.00	1357944.84	3183460.32	40.314091	-104.842108	
11100.00	90.25	269.50	7209.13	4019.73	-1205.36	-3913.55	0.00	1357943.21	3183360.34	40.314089	-104.842466	
11200.00	90.25	269.50	7208.69	4119.25	-1206.23	-4013.54	0.00	1357941.58	3183260.36	40.314086	-104.842825	
11300.00	90.25	269.50	7208.25	4218.77	-1207.10	-4113.54	0.00	1357939.95	3183160.37	40.314084	-104.843183	
11400.00	90.25	269.50	7207.82	4318.29	-1207.98	-4213.53	0.00	1357938.32	3183060.39	40.314081	-104.843542	
End of Hold, Build/Turn 2 DLS	11491.34	90.25	269.50	7207.42	4409.18	-1208.77	-4304.86	0.00	1357936.83	3182969.07	40.314079	-104.843869
Hold	11500.00	90.27	269.33	7207.38	4417.81	-1208.86	-4313.53	2.00	1357936.68	3182960.41	40.314079	-104.843901
	11600.00	90.47	267.34	7206.74	4517.50	-1211.77	-4413.48	2.00	1357933.01	3182860.49	40.314071	-104.844259
	11667.01	90.60	266.00	7206.12	4584.42	-1215.66	-4480.37	2.00	1357928.61	3182793.64	40.314060	-104.844499
	11700.00	90.60	266.00	7205.77	4617.39	-1217.96	-4513.28	0.00	1357926.06	3182760.74	40.314054	-104.844617
	11800.00	90.60	266.00	7204.72	4717.32	-1224.93	-4613.03	0.00	1357918.34	3182661.05	40.314034	-104.844975
	11900.00	90.60	266.00	7203.68	4817.24	-1231.90	-4712.78	0.00	1357910.62	3182561.36	40.314015	-104.845332
	12000.00	90.60	266.00	7202.63	4917.17	-1238.87	-4812.53	0.00	1357902.89	3182461.67	40.313996	-104.845690
12100.00	90.60	266.00	7201.58	5017.09	-1245.84	-4912.28	0.00	1357895.17	3182361.98	40.313977	-104.846048	
KOP, Build/Turn 2 DLS	12167.36	90.60	266.00	7200.88	5084.41	-1250.53	-4979.48	0.00	1357889.97	3182294.82	40.313964	-104.846289
Hold	12200.00	90.70	266.65	7200.51	5117.01	-1252.62	-5012.05	2.00	1357887.63	3182262.27	40.313958	-104.846405
	12300.00	90.99	268.63	7199.04	5216.78	-1256.74	-5111.95	2.00	1357882.75	3182162.41	40.313947	-104.846764
	12400.00	91.29	270.61	7197.05	5316.26	-1257.41	-5211.92	2.00	1357881.33	3182062.45	40.313945	-104.847122
	12404.73	91.30	270.70	7196.94	5320.95	-1257.35	-5216.64	2.00	1357881.35	3182057.73	40.313945	-104.847139
	12500.00	91.30	270.70	7194.78	5415.52	-1256.19	-5311.88	0.00	1357881.79	3181962.48	40.313948	-104.847480
	12600.00	91.30	270.70	7192.51	5514.79	-1254.97	-5411.85	0.00	1357882.25	3181862.52	40.313952	-104.847839
	12700.00	91.30	270.70	7190.24	5614.06	-1253.75	-5511.82	0.00	1357882.72	3181762.55	40.313955	-104.848197
	12800.00	91.30	270.70	7187.97	5713.32	-1252.53	-5611.79	0.00	1357883.18	3181662.58	40.313958	-104.848556
	12900.00	91.30	270.70	7185.70	5812.59	-1251.30	-5711.75	0.00	1357883.65	3181562.61	40.313961	-104.848914
	13000.00	91.30	270.70	7183.44	5911.86	-1250.08	-5811.72	0.00	1357884.11	3181462.64	40.313965	-104.849273
	13100.00	91.30	270.70	7181.17	6011.13	-1248.86	-5911.69	0.00	1357884.58	3181362.67	40.313968	-104.849631
	13200.00	91.30	270.70	7178.90								

Comments	MD (ft)	Incl (°)	Azim True (°)	TVD (ft)	VSEC (ft)	NS (ft)	EW (ft)	DLS (°/100ft)	Northing (ftUS)	Easting (ftUS)	Latitude (°)	Longitude (°)
Hold	16576.36	90.93	273.10	7103.75	9461.07	-1199.17	-9386.72	2.00	1357907.95	3177887.51	40.314101	-104.862092
	16600.00	90.93	273.10	7103.37	9484.40	-1197.89	-9410.33	0.00	1357909.05	3177863.90	40.314105	-104.862177
	16700.00	90.93	273.10	7101.75	9583.10	-1192.49	-9510.17	0.00	1357913.69	3177764.03	40.314120	-104.862535
	16800.00	90.93	273.10	7100.13	9681.79	-1187.10	-9610.01	0.00	1357918.33	3177664.15	40.314134	-104.862893
	16900.00	90.93	273.10	7098.51	9780.49	-1181.70	-9709.85	0.00	1357922.97	3177564.28	40.314149	-104.863251
	17000.00	90.93	273.10	7096.89	9879.19	-1176.30	-9809.69	0.00	1357927.61	3177464.40	40.314164	-104.863609
	17100.00	90.93	273.10	7095.27	9977.88	-1170.90	-9909.53	0.00	1357932.26	3177364.53	40.314179	-104.863967
	17200.00	90.93	273.10	7093.65	10076.58	-1165.50	-10009.37	0.00	1357936.90	3177264.65	40.314193	-104.864325
	17300.00	90.93	273.10	7092.03	10175.28	-1160.10	-10109.21	0.00	1357941.54	3177164.78	40.314208	-104.864683
	17400.00	90.93	273.10	7090.41	10273.97	-1154.70	-10209.05	0.00	1357946.18	3177064.90	40.314223	-104.865041
	17500.00	90.93	273.10	7088.79	10372.67	-1149.31	-10308.89	0.00	1357950.82	3176965.03	40.314237	-104.865399
	17600.00	90.93	273.10	7087.17	10471.37	-1143.91	-10408.74	0.00	1357955.47	3176865.16	40.314252	-104.865757
KOP, Drop/Turn 1.87 DLS	17672.38	90.93	273.10	7086.00	10542.80	-1140.00	-10481.00	0.00	1357958.83	3176792.87	40.314263	-104.866016
Bernhardt 5-08C- 14-L BHL	17700.00	90.42	273.17	7085.68	10570.06	-1138.49	-10508.58	1.87	1357960.13	3176765.28	40.314267	-104.866115
	17772.61	89.07	273.38	7086.00	10641.69	-1134.34	-10581.06	1.87	1357963.73	3176692.77	40.314278	-104.866375

Survey Type: Def Plan

Survey Error Model: ISCWSA Rev 0 \*\*\* 3-D 95.000% Confidence 2.7955 sigma  
Survey Program:

Description	Part	MD From (ft)	MD To (ft)	EOU Freq (ft)	Hole Size (in)	Casing Diameter (in)	Expected Max Inclination (deg)	Survey Tool Type	Borehole / Survey
	1	0.000	4.000	1/100.000	13.500	9.625		NAL_MWD_IFR1-Depth Only	Original Hole / Bernhardt 5-08C- 14-L R0 mdv 17Sept19
	1	4.000	1800.000	1/100.000	13.500	9.625		NAL_MWD_IFR1	Original Hole / Bernhardt 5-08C- 14-L R0 mdv 17Sept19
	1	1800.000	17772.607	1/100.000	8.500	5.500		NAL_MWD_IFR1+MS	Original Hole / Bernhardt 5-08C- 14-L R0 mdv 17Sept19