



SRC Energy

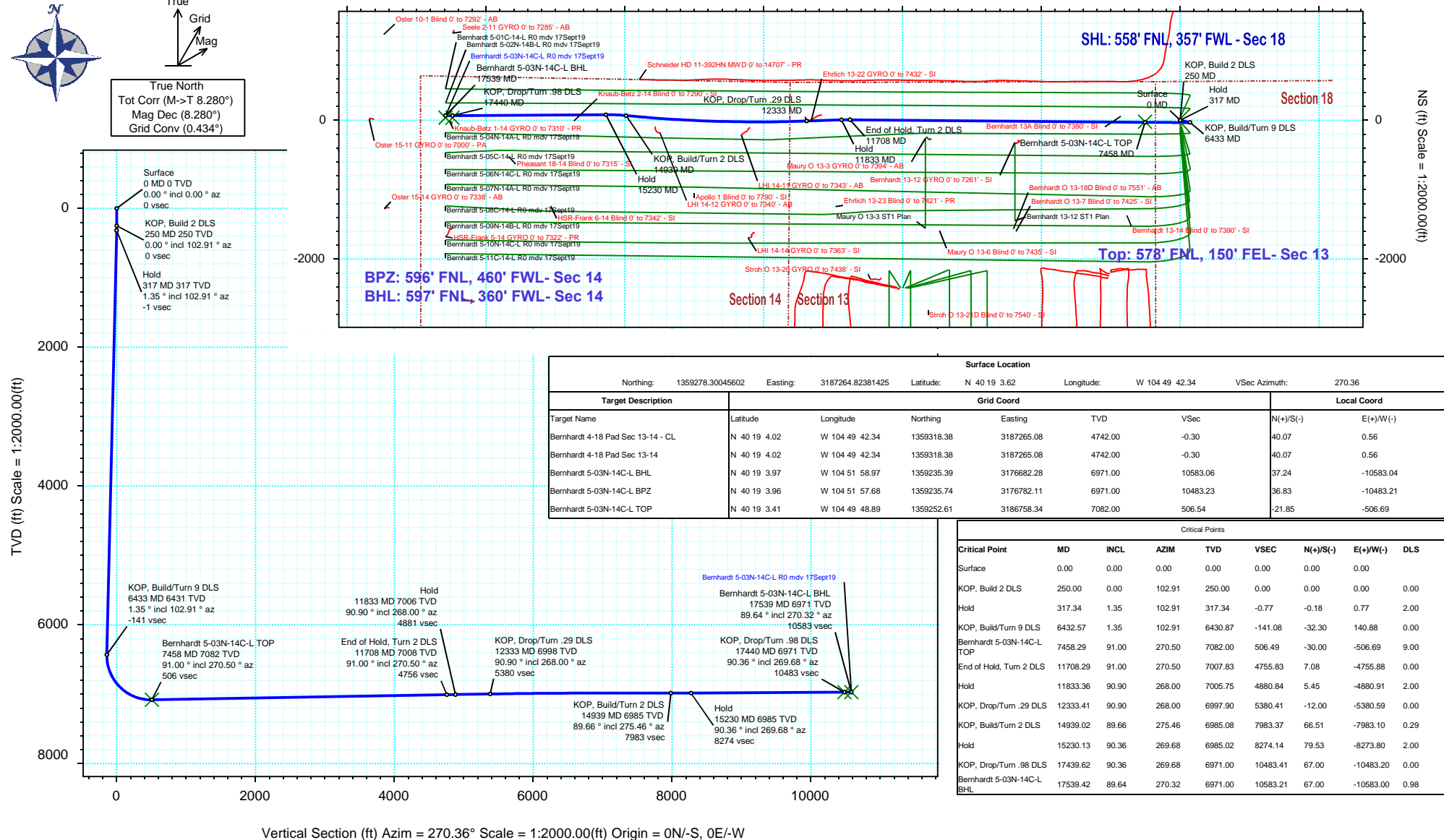
Rev 0

Schlumberger

Borehole:	Well:	Field:	Structure:
Original Hole	Bernhardt 5-03N-14C-L	CO, Weld County (NAD 83 NZ) - SRC	SRC Energy 18-04N-66W (Bernhardt 4-18 Pad)

Gravity & Magnetic Parameters		Surface Location			Miscellaneous	
Model:	HdGM 2019	Dip:	66.674°	Date:	17-Sep-2019	Lat: N 40 19 3.62
MagDec:	8.28°	FS:	52145.321nT	Gravity FS:	999.023mgn (9.80665 Based)	Northing: 1359278.3ftUS
						Grid Conv: 0.4339°
						Scale Fact: 0.99995753
						Slot: Bernhardt 5-03N-14C-L
						TVD Ref: KB 4ft(4742ft above MSL)
						Plan: Bernhardt 5-03N-14C-L R0 mdy 17Sept19

Proposal



Bernhardt 5-03N-14C-L R0 mdv 17Sept19 Proposal Geodetic Report

(Def Plan)

Report Date: September 23, 2019 - 12:08 PM
Client: SRC Energy
Field: CO, Weld County (NAD 83 NZ) - SRC
Structure / Slot: SRC Energy 18-04N-66W (Bernhardt 4-18 Pad) / Bernhardt 5-03N-14C-L
Well: Bernhardt 5-03N-14C-L
Borehole: Original Hole
UWI / API#: Unknown / Unknown
Survey Name: Bernhardt 5-03N-14C-L R0 mdv 17Sept19
Survey Date: September 17, 2019
Tort / AHD / DDI / ERD Ratio: 110.517 ° / 10872.771 ft / 6.474 / 1.535
Coordinate Reference System: NAD83 Colorado State Plane, Northern Zone, US Feet
Location Lat / Long: N 40° 19' 3.62280", W 104° 49' 42.34440"
Location Grid N/E Y/X: N 1359278.300 ftUS, E 3187264.824 ftUS
CRS Grid Convergence Angle: 0.4339 °
Grid Scale Factor: 0.99995753
Version / Patch: 2.10.782.0

Survey / DLS Computation: Minimum Curvature / Lubinski
Vertical Section Azimuth: 270.363 ° (True North)
Vertical Section Origin: 0.000 ft, 0.000 ft
TVD Reference Datum: KB 4ft
TVD Reference Elevation: 4742.000 ft above MSL
Seabed / Ground Elevation: 4738.000 ft above MSL
Magnetic Declination: 8.280 °
Total Gravity Field Strength: 999.0229mgn (9.80665 Based)
Gravity Model: GARM
Total Magnetic Field Strength: 52145.321 nT
Magnetic Dip Angle: 66.674 °
Declination Date: September 17, 2019
Magnetic Declination Model: HDGM 2019
North Reference: True North
Grid Convergence Used: 0.0000 °
Total Corr Mag North->True North: 8.2803 °
Local Coord Referenced To: Well Head

Comments	MD (ft)	Incl (°)	Azim True (°)	TVD (ft)	VSEC (ft)	NS (ft)	EW (ft)	DLS (°/100ft)	Northing (ftUS)	Easting (ftUS)	Latitude (°)	Longitude (°)	
Surface	0.00	0.00	0.00	0.00	0.00	0.00	0.00	0.00	N/A	1359278.30	3187264.82	40.317673	-104.828429
	100.00	0.00	102.91	100.00	0.00	0.00	0.00	0.00	1359278.30	3187264.82	40.317673	-104.828429	
	200.00	0.00	102.91	200.00	0.00	0.00	0.00	0.00	1359278.30	3187264.82	40.317673	-104.828429	
KOP, Build 2	250.00	0.00	102.91	250.00	0.00	0.00	0.00	0.00	1359278.30	3187264.82	40.317673	-104.828429	
DLS	300.00	1.00	102.91	300.00	-0.43	-0.10	0.43	2.00	1359278.21	3187265.25	40.317673	-104.828427	
Hold	317.34	1.35	102.91	317.34	-0.77	-0.18	0.77	2.00	1359278.13	3187265.60	40.317673	-104.828426	
	400.00	1.35	102.91	399.97	-2.67	-0.61	2.67	0.00	1359277.71	3187267.49	40.317671	-104.828419	
	500.00	1.35	102.91	499.94	-4.96	-1.14	4.96	0.00	1359277.20	3187269.79	40.317670	-104.828411	
	600.00	1.35	102.91	599.92	-7.26	-1.66	7.25	0.00	1359276.69	3187272.08	40.317668	-104.828403	
	700.00	1.35	102.91	699.89	-9.55	-2.19	9.54	0.00	1359276.19	3187274.38	40.317667	-104.828395	
	800.00	1.35	102.91	799.86	-11.85	-2.71	11.83	0.00	1359275.68	3187276.67	40.317666	-104.828387	
	900.00	1.35	102.91	899.83	-14.14	-3.24	14.12	0.00	1359275.17	3187278.97	40.317664	-104.828378	
	1000.00	1.35	102.91	999.81	-16.44	-3.76	16.41	0.00	1359274.66	3187281.26	40.317663	-104.828370	
	1100.00	1.35	102.91	1099.78	-18.73	-4.29	18.70	0.00	1359274.15	3187283.56	40.317661	-104.828362	
	1200.00	1.35	102.91	1199.75	-21.02	-4.81	20.99	0.00	1359273.65	3187285.85	40.317660	-104.828354	
	1300.00	1.35	102.91	1299.72	-23.32	-5.34	23.28	0.00	1359273.14	3187288.15	40.317658	-104.828345	
	1400.00	1.35	102.91	1399.69	-25.61	-5.86	25.58	0.00	1359272.63	3187290.44	40.317657	-104.828337	
	1500.00	1.35	102.91	1499.67	-27.91	-6.39	27.87	0.00	1359272.12	3187292.74	40.317655	-104.828329	
	1600.00	1.35	102.91	1599.64	-30.20	-6.91	30.16	0.00	1359271.61	3187295.03	40.317654	-104.828321	
	1700.00	1.35	102.91	1699.61	-32.50	-7.44	32.45	0.00	1359271.11	3187297.33	40.317653	-104.828313	
	1800.00	1.35	102.91	1799.58	-34.79	-7.97	34.74	0.00	1359270.60	3187299.62	40.317651	-104.828304	
	1900.00	1.35	102.91	1899.56	-37.08	-8.49	37.03	0.00	1359270.09	3187301.92	40.317650	-104.828296	
	2000.00	1.35	102.91	1999.53	-39.38	-9.02	39.32	0.00	1359269.58	3187304.21	40.317648	-104.828288	
	2100.00	1.35	102.91	2099.50	-41.67	-9.54	41.61	0.00	1359269.07	3187306.51	40.317647	-104.828280	
	2200.00	1.35	102.91	2199.47	-43.97	-10.07	43.90	0.00	1359268.57	3187308.80	40.317645	-104.828272	
	2300.00	1.35	102.91	2299.45	-46.26	-10.59	46.20	0.00	1359268.06	3187311.10	40.317644	-104.828263	
	2400.00	1.35	102.91	2399.42	-48.56	-11.12	48.49	0.00	1359267.55	3187313.39	40.317642	-104.828255	
	2500.00	1.35	102.91	2499.39	-50.85	-11.64	50.78	0.00	1359267.04	3187315.69	40.317641	-104.828247	
	2600.00	1.35	102.91	2599.36	-53.14	-12.17	53.07	0.00	1359266.54	3187317.98	40.317640	-104.828239	
	2700.00	1.35	102.91	2699.34	-55.44	-12.69	55.36	0.00	1359266.03	3187320.28	40.317638	-104.828230	
	2800.00	1.35	102.91	2799.31	-57.73	-13.22	57.65	0.00	1359265.52	3187322.57	40.317637	-104.828222	
	2900.00	1.35	102.91	2899.28	-60.03	-13.74	59.94	0.00	1359265.01	3187324.87	40.317635	-104.828214	
	3000.00	1.35	102.91	2999.25	-62.32	-14.27	62.23	0.00	1359264.50	3187327.16	40.317634	-104.828206	
	3100.00	1.35	102.91	3099.22	-64.62	-14.79	64.52	0.00	1359264.00	3187329.46	40.317632	-104.828198	
	3200.00	1.35	102.91	3199.20	-66.91	-15.32	66.82	0.00	1359263.49	3187331.75	40.317631	-104.828189	
	3300.00	1.35	102.91	3299.17	-69.21	-15.85	69.11	0.00	1359262.98	3187334.05	40.317630	-104.828181	
	3400.00	1.35	102.91	3399.14	-71.50	-16.37	71.40	0.00	1359262.47	3187336.34	40.317628	-104.828173	
	3500.00	1.35	102.91	3499.11	-73.79	-16.90	73.69	0.00	1359261.96	3187338.64	40.317627	-104.828165	
	3600.00	1.35	102.91	3599.09	-76.09	-17.42	75.98	0.00	1359261.46	3187340.93	40.317625	-104.828157	
	3700.00	1.35	102.91	3699.06	-78.38	-17.95	78.27	0.00	1359260.95	3187343.22	40.317624	-104.828148	
	3800.00	1.35	102.91	3799.03	-80.68	-18.47	80.56	0.00	1359260.44	3187345.52	40.317622	-104.828140	
	3900.00	1.35	102.91	3899.00	-82.97	-19.00	82.85	0.00	1359259.93	3187347.81	40.317621	-104.828132	
	4000.00	1.35	102.91	3998.98	-85.27	-19.52	85.14	0.00	1359259.42	3187350.11	40.317619	-104.828124	
	4100.00	1.35	102.91	4098.95	-87.56	-20.05	87.44	0.00	1359258.92	3187352.40	40.317618	-104.828115	
	4200.00	1.35	102.91	4198.92	-89.85	-20.57	89.73	0.00	1359258.41	3187354.70	40.317617	-104.828107	
	4300.00	1.35	102.91	4298.89	-92.15	-21.10	92.02	0.00	1359257.90	3187356.99	40.317615	-104.828099	
	4400.00	1.35	102.91	4398.87	-94.44	-21.62	94.31	0.00	1359257.39	3187359.29	40.317614	-104.828091	
	4500.00	1.35	102.91	4498.84	-96.74	-22.15	96.60	0.00	1359256.88	3187361.58	40.317612	-104.828083	
	4600.00	1.35	102.91	4598.81	-99.03	-22.67	98.89	0.00	1359256.38	3187363.88	40.317611	-104.828074	
	4700.00	1.35	102.91	4698.78	-101.33	-23.20	101.18	0.00	1359255.87	3187366.17	40.317609	-104.828066	
	4800.00	1.35	102.91	4798.76	-103.62	-23.73	103.47	0.00	1359255.36	3187368.47	40.317608	-104.828058	
	4900.00	1.35	102.91	4898.73	-105.92	-24.25	105.76	0.00	1359254.85	3187370.76	40.317606	-104.828050	
	5000.00	1.35	102.91	4998.70	-108.21	-24.78	108.05	0.00	1359254.34	3187373.06	40.317605	-104.828042	
	5100.00	1.35	102.91	5098.67	-110.50	-25.30	110.35	0.00	1359253.84	3187375.35	40.317604	-104.828033	
	5200.00	1.35	102.91	5198.64	-112.80	-25.83	112.64	0.00	1359253.33	3187377.65	40.317602	-104.828025	
	5300.00	1.35	102.91	5298.62	-115.09	-26.35	114.93	0.00	1359252.82	3187379.94	40.317601	-104.828017	
	5400.00	1.35	102.91	5398.59	-117.39	-26.88	117.22	0.00	1359252.31	3187382.24	40.317599	-104.828009	
	5500.00	1.35	102.91	5498.56	-119.68	-27.40	119.51	0.00	1359251.80	3187384.53	40.317598	-104.828000	
	5600.00	1.35	102.91	5598.53	-121.98	-27.93	121.80	0.00	1359251.30	3187386.83	40.317596	-104.827992	
	5700.00	1.35	102.91	5698.51	-124.27	-28.45	124.09	0.00	1359250.79	3187389.12	40.317595	-104.827984	
	5800.00	1.35	102.91	5798.48	-126.56	-28.98	126.38	0.00	1359250.28	3187391.42	40.317593	-104.827976	
	5900.00	1.35	102.91	5898.45	-128.86	-29.50	128.67	0.00	1359249.77	3187393.71	40.317592	-104.827968	
	6000.00	1.35	102.91	5998.42	-131.15	-30.03	130.97	0.00	1359249.27	3187396.01	40.317591	-104.827959	
	6100.00	1.35	102.91	6098.40	-133.45	-30.55	133.26	0.00	1359248.76	3187398.30	40.317589	-104.827951	
	6200.00	1.35	102.91	6198.37	-135.74	-31.08	135.55	0.00	1359248.25	3187400.60	40.317588	-104.827943	
	6300.00	1.35	102.91	6298.34	-138.04	-31.61	137.84	0.00	1359247.74	3187402.89	40.317586	-104.827935	
	6400.00	1.35	102.91	6398.31	-140.33	-32.13	140.13	0.00	1359247.23	3187405.19	40.317585	-104.827926	
KOP, Build/Turn 9 DLS	6432.57	1.35	102.91	6430.87	-141.08	-32.30	140.88	0.00	1359247.07	3187405.93	40.317584	-104.827924	
	6500.00	4.76	267.02	6498.24	-139.06	-32.62	138.85	9.00	1359246.73	3187403.91	40.317583	-104.827931	
	6600.00	13.76	269.31	6596.84	-122.99	-32.98	122.78	9.00	1359246.25	3187397.85	40.317582	-104.827989	
	6700.00	22.76	269.80	6691.71	-91.70	-33.19	91.49	9.00	1359245.80	3187356.56	40.317582	-104.828101	
	6800.00	31.75	270.03	6780.51	-45.95	-33.25	45.74	9.00	1359245.40	3187310.81	40.317582	-104.828265	
	6900.00	40.75	270.16	6861.07	13.12	-33.14	-13.33	9.00	1359245.06	3187251.74	40.317582	-104.828477	
	7000.00	4											

	MD (ft)	Incl (°)	Azim True (°)	TVD (ft)	VSEC (ft)	NS (ft)	EW (ft)	DLS (°/100ft)	Northing (ftUS)	Easting (ftUS)	Latitude (°)	Longitude (°)
Bernhardt 5-03N-14C-L TOP	7200.00	67.75	270.38	7034.71	254.36	-31.94	-254.57	9.00	1359244.44	3187010.52	40.317585	-104.829342
	7300.00	76.75	270.43	7065.16	349.51	-31.27	-349.71	9.00	1359244.38	3186915.38	40.317587	-104.829683
	7400.00	85.75	270.47	7080.35	448.24	-30.49	-448.44	9.00	1359244.41	3186816.64	40.317589	-104.830037
	7458.29	91.00	270.50	7082.00	506.49	-30.00	-506.69	9.00	1359244.47	3186758.40	40.317591	-104.830246
	7500.00	91.00	270.50	7081.27	548.19	-29.64	-548.39	0.00	1359244.51	3186716.70	40.317592	-104.830396
	7600.00	91.00	270.50	7079.53	648.17	-28.76	-648.37	0.00	1359244.63	3186616.72	40.317594	-104.830754
	7700.00	91.00	270.50	7077.78	748.16	-27.89	-748.35	0.00	1359244.74	3186516.74	40.317596	-104.831113
	7800.00	91.00	270.50	7076.04	848.14	-27.02	-848.33	0.00	1359244.86	3186416.76	40.317599	-104.831471
	7900.00	91.00	270.50	7074.29	948.13	-26.15	-948.31	0.00	1359244.97	3186316.78	40.317601	-104.831830
	8000.00	91.00	270.50	7072.55	1048.11	-25.27	-1048.29	0.00	1359245.09	3186216.80	40.317604	-104.832188
	8100.00	91.00	270.50	7070.80	1148.10	-24.40	-1148.27	0.00	1359245.21	3186116.82	40.317606	-104.832547
	8200.00	91.00	270.50	7069.06	1248.08	-23.53	-1248.26	0.00	1359245.32	3186016.84	40.317608	-104.832905
	8300.00	91.00	270.50	7067.31	1348.07	-22.66	-1348.24	0.00	1359245.44	3185916.86	40.317611	-104.833264
	8400.00	91.00	270.50	7065.56	1448.05	-21.78	-1448.22	0.00	1359245.55	3185816.88	40.317613	-104.833622
	8500.00	91.00	270.50	7063.82	1548.04	-20.91	-1548.20	0.00	1359245.67	3185716.90	40.317615	-104.833981
	8600.00	91.00	270.50	7062.07	1648.02	-20.04	-1648.18	0.00	1359245.78	3185616.92	40.317618	-104.834339
	8700.00	91.00	270.50	7060.33	1748.00	-19.17	-1748.16	0.00	1359245.90	3185516.94	40.317620	-104.834698
	8800.00	91.00	270.50	7058.58	1847.99	-18.29	-1848.14	0.00	1359246.01	3185416.96	40.317623	-104.835056
	8900.00	91.00	270.50	7056.84	1947.97	-17.42	-1948.12	0.00	1359246.13	3185316.98	40.317625	-104.835415
	9000.00	91.00	270.50	7055.09	2047.96	-16.55	-2048.10	0.00	1359246.24	3185217.00	40.317627	-104.835774
	9100.00	91.00	270.50	7053.35	2147.94	-15.68	-2148.08	0.00	1359246.36	3185117.02	40.317630	-104.836132
	9200.00	91.00	270.50	7051.60	2247.93	-14.80	-2248.07	0.00	1359246.47	3185017.03	40.317632	-104.836491
	9300.00	91.00	270.50	7049.86	2347.91	-13.93	-2348.05	0.00	1359246.59	3184917.05	40.317634	-104.836849
	9400.00	91.00	270.50	7048.11	2447.90	-13.06	-2448.03	0.00	1359246.70	3184817.07	40.317637	-104.837208
	9500.00	91.00	270.50	7046.37	2547.88	-12.19	-2548.01	0.00	1359246.82	3184717.09	40.317639	-104.837566
	9600.00	91.00	270.50	7044.62	2647.86	-11.31	-2647.99	0.00	1359246.93	3184617.11	40.317642	-104.837925
	9700.00	91.00	270.50	7042.88	2747.85	-10.44	-2747.97	0.00	1359247.05	3184517.13	40.317644	-104.838283
	9800.00	91.00	270.50	7041.13	2847.83	-9.57	-2847.95	0.00	1359247.17	3184417.15	40.317646	-104.838642
	9900.00	91.00	270.50	7039.39	2947.82	-8.70	-2947.93	0.00	1359247.28	3184317.17	40.317649	-104.839000
	10000.00	91.00	270.50	7037.64	3047.80	-7.82	-3047.91	0.00	1359247.40	3184217.19	40.317651	-104.839359
	10100.00	91.00	270.50	7035.90	3147.79	-6.95	-3147.89	0.00	1359247.51	3184117.21	40.317653	-104.839717
	10200.00	91.00	270.50	7034.15	3247.77	-6.08	-3247.88	0.00	1359247.63	3184017.23	40.317656	-104.840076
	10300.00	91.00	270.50	7032.41	3347.76	-5.21	-3347.86	0.00	1359247.74	3183917.25	40.317658	-104.840434
	10400.00	91.00	270.50	7030.66	3447.74	-4.33	-3447.84	0.00	1359247.86	3183817.27	40.317660	-104.840793
	10500.00	91.00	270.50	7028.91	3547.72	-3.46	-3547.82	0.00	1359247.97	3183717.29	40.317663	-104.841152
	10600.00	91.00	270.50	7027.17	3647.71	-2.59	-3647.80	0.00	1359248.09	3183617.31	40.317665	-104.841510
	10700.00	91.00	270.50	7025.42	3747.69	-1.72	-3747.78	0.00	1359248.20	3183517.33	40.317668	-104.841869
	10800.00	91.00	270.50	7023.68	3847.68	-0.84	-3847.76	0.00	1359248.32	3183417.35	40.317670	-104.842227
	10900.00	91.00	270.50	7021.93	3947.66	0.03	-3947.74	0.00	1359248.43	3183317.37	40.317672	-104.842586
	11000.00	91.00	270.50	7020.19	4047.65	0.90	-4047.72	0.00	1359248.55	3183217.39	40.317675	-104.842944
	11100.00	91.00	270.50	7018.44	4147.63	1.77	-4147.70	0.00	1359248.66	3183117.41	40.317677	-104.843303
	11200.00	91.00	270.50	7016.70	4247.62	2.65	-4247.68	0.00	1359248.78	3183017.43	40.317679	-104.843661
	11300.00	91.00	270.50	7014.95	4347.60	3.52	-4347.67	0.00	1359248.89	3182917.45	40.317682	-104.844020
	11400.00	91.00	270.50	7013.21	4447.59	4.39	-4447.65	0.00	1359249.01	3182817.47	40.317684	-104.844378
	11500.00	91.00	270.50	7011.46	4547.57	5.26	-4547.63	0.00	1359249.13	3182717.49	40.317686	-104.844737
	11600.00	91.00	270.50	7009.72	4647.55	6.14	-4647.61	0.00	1359249.24	3182617.51	40.317689	-104.845095
	11700.00	91.00	270.50	7007.97	4747.54	7.01	-4747.59	0.00	1359249.36	3182517.53	40.317691	-104.845454
End of Hold, Turn 2 DLS	11708.29	91.00	270.50	7007.83	4755.83	7.08	-4755.88	0.00	1359249.37	3182509.24	40.317691	-104.845484
Hold	11800.00	90.93	268.67	7006.29	4847.51	6.42	-4847.57	2.00	1359248.01	3182417.56	40.317689	-104.845812
	11833.36	90.90	268.00	7005.75	4880.84	5.45	-4880.91	2.00	1359246.78	3182384.23	40.317687	-104.845932
	11900.00	90.90	268.00	7004.71	4947.42	3.12	-4947.50	0.00	1359243.95	3182317.66	40.317680	-104.846171
	12000.00	90.90	268.00	7003.14	5047.32	-0.37	-5047.43	0.00	1359239.71	3182217.77	40.317671	-104.846529
	12100.00	90.90	268.00	7001.57	5147.23	-3.86	-5147.35	0.00	1359235.46	3182117.87	40.317661	-104.846887
	12200.00	90.90	268.00	7000.00	5247.13	-7.35	-5247.28	0.00	1359231.22	3182017.98	40.317651	-104.847246
	12300.00	90.90	268.00	6998.42	5347.03	-10.83	-5347.21	0.00	1359226.97	3181918.09	40.317642	-104.847604
	12333.41	90.90	268.00	6997.90	5380.41	-12.00	-5380.59	0.00	1359225.55	3181884.72	40.317638	-104.847724
	12400.00	90.87	268.19	6996.87	5446.94	-14.21	-5447.14	0.29	1359222.84	3181818.19	40.317632	-104.847963
	12500.00	90.82	268.48	6995.40	5546.87	-17.12	-5547.09	0.29	1359219.17	3181718.27	40.317624	-104.848321
KOP, Drop/Turn .29 DLS	12600.00	90.77	268.76	6994.01	5646.81	-19.53	-5647.05	0.29	1359216.01	3181618.34	40.317618	-104.848679
	12700.00	90.73	269.05	6992.70	5746.77	-21.44	-5747.02	0.29	1359213.34	3181518.39	40.317612	-104.849038
	12800.00	90.68	269.34	6991.47	5846.74	-22.85	-5847.00	0.29	1359211.18	3181418.42	40.317608	-104.849396
	12900.00	90.63	269.62	6990.33	5946.72	-23.76	-5946.99	0.29	1359209.51	3181318.45	40.317606	-104.849755
	13000.00	90.58	269.91	6989.27	6046.71	-24.17	-6046.99	0.29	1359208.34	3181218.46	40.317605	-104.850114
	13100.00	90.54	270.19	6988.29	6146.70	-24.08	-6146.98	0.29	1359207.67	3181118.48	40.317605	-104.850472
	13200.00	90.49	270.48	6987.39	6246.70	-23.49	-6246.97	0.29	1359207.50	3181018.48	40.317606	-104.850831
	13300.00	90.44	270.77	6986.58	6346.70	-22.40	-6346.97	0.29	1359207.83	3180918.49	40.317609	-104.851189
	13400.00	90.39	271.05	6989								

Comments	MD (ft)	Incl (°)	Azim True (°)	TVD (ft)	VSEC (ft)	NS (ft)	EW (ft)	DLS (°/100ft)	Northing (ftUS)	Easting (ftUS)	Latitude (°)	Longitude (°)
	17000.00	90.36	269.68	6973.79	10043.84	69.49	-10043.60	0.00	1359271.73	3177221.43	40.317858	-104.864446
	17100.00	90.36	269.68	6973.15	10143.83	68.93	-10143.60	0.00	1359270.40	3177121.45	40.317856	-104.864804
	17200.00	90.36	269.68	6972.52	10243.82	68.36	-10243.59	0.00	1359269.08	3177021.46	40.317855	-104.865163
	17300.00	90.36	269.68	6971.89	10343.81	67.79	-10343.59	0.00	1359267.76	3176921.48	40.317853	-104.865521
	17400.00	90.36	269.68	6971.25	10443.80	67.22	-10443.59	0.00	1359266.43	3176821.49	40.317851	-104.865880
KOP, Drop/Turn .98 DLS	17439.62	90.36	269.68	6971.00	10483.41	67.00	-10483.20	0.00	1359265.91	3176781.88	40.317851	-104.866022
	17500.00	89.92	270.07	6970.85	10543.80	66.86	-10543.58	0.98	1359265.31	3176721.51	40.317850	-104.866239
Bernhardt 5-03N- 14C-L BHL	17539.42	89.64	270.32	6971.00	10583.21	67.00	-10583.00	0.98	1359265.15	3176682.09	40.317851	-104.866380

Survey Type: Def Plan

Survey Error Model: ISCWSA Rev 0 *** 3-D 95.000% Confidence 2.7955 sigma
Survey Program:

Description	Part	MD From (ft)	MD To (ft)	EOU Freq (ft)	Hole Size Casing Diameter (in)	Expected Max Inclination (deg)	Survey Tool Type	Borehole / Survey
	1	0.000	4.000	1/100.000	13.500	9.625	NAL_MWD_IFR1-Depth Only	Original Hole / Bernhardt 5-03N- 14C-L R0 mdv 17Sept19
	1	4.000	1800.000	1/100.000	13.500	9.625	NAL_MWD_IFR1	Original Hole / Bernhardt 5-03N- 14C-L R0 mdv 17Sept19
	1	1800.000	17539.417	1/100.000	8.500	5.500	NAL_MWD_IFR1+MS	Original Hole / Bernhardt 5-03N- 14C-L R0 mdv 17Sept19