



# SRC Energy

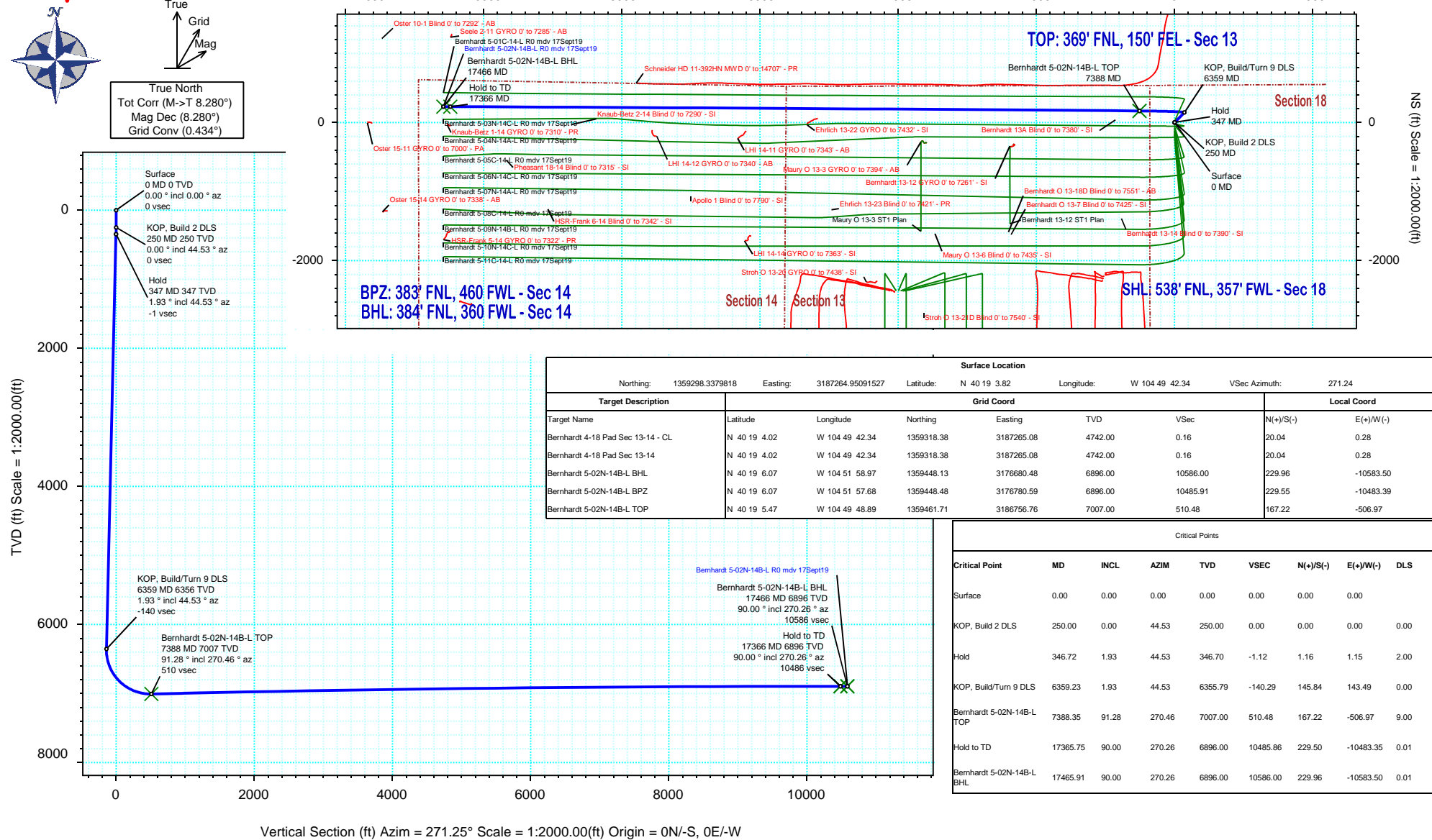
## Rev 0

# Schlumberger

Borehole:	Well:	Field:	Structure:
Original Hole	Bernhardt 5-02N-14B-L	CO, Weld County (NAD 83 NZ) - SRC	SRC Energy 18-04N-66W (Bernhardt 4-18 Pad)

Gravity & Magnetic Parameters		Surface Location			Miscellaneous	
Model:	HDGM 2019	Dip:	66.674°	Date:	17-Sep-2019	Lat: N 40 19 3.82
MagDec:	8.28°	FS:	52145.344nT	Gravity FS:	999.023mgn (9.80665 Based)	Northing: 1359298.34ftUS
						Grid Conv: 0.4339°
						Lon: W 104 49 42.34
						Easting: 3187264.95ftUS
						Scale Fact: 0.99995753
						Slot: Bernhardt 5-02N-14B-L
						Plan: Bernhardt 5-02N-14B-L R0 mdy 17Sept19
						TVD Ref: KB 4ft(4742ft above MSL)

## Proposal



# Bernhardt 5-02N-14B-L R0 mdv 17Sept19 Proposal Geodetic Report

## (Def Plan)

**Report Date:** September 20, 2019 - 11:33 AM  
**Client:** SRC Energy  
**Field:** CO, Weld County (NAD 83 NZ) - SRC  
**Structure / Slot:** SRC Energy 18-04N-66W (Bernhardt 4-18 Pad) / Bernhardt 5-02N-14B-L  
**Well:** Bernhardt 5-02N-14B-L  
**Borehole:** Original Hole  
**UWI / API#:** Unknown / Unknown  
**Survey Name:** Bernhardt 5-02N-14B-L R0 mdv 17Sept19  
**Survey Date:** September 17, 2019  
**Tort / AHD / DDI / ERD Ratio:** 95.854 ° / 10933.397 ft / 6.417 / 1.560  
**Coordinate Reference System:** NAD83 Colorado State Plane, Northern Zone, US Feet  
**Location Lat / Long:** N 40° 19' 3.82080", W 104° 49' 42.34080"  
**Location Grid N/E Y/X:** N 1359298.338 ftUS, E 3187264.951 ftUS  
**CRS Grid Convergence Angle:** 0.4339 °  
**Grid Scale Factor:** 0.99995753  
**Version / Patch:** 2.10.782.0

**Survey / DLS Computation:** Minimum Curvature / Lubinski  
**Vertical Section Azimuth:** 271.245 ° (True North)  
**Vertical Section Origin:** 0.000 ft, 0.000 ft  
**TVD Reference Datum:** KB 4ft  
**TVD Reference Elevation:** 4742.000 ft above MSL  
**Seabed / Ground Elevation:** 4738.000 ft above MSL  
**Magnetic Declination:** 8.280 °  
**Total Gravity Field Strength:** 999.0229mgn (9.80665 Based)  
**Gravity Model:** GARM  
**Total Magnetic Field Strength:** 52145.344 nT  
**Magnetic Dip Angle:** 66.674 °  
**Declination Date:** September 17, 2019  
**Magnetic Declination Model:** HDGM 2019  
**North Reference:** True North  
**Grid Convergence Used:** 0.0000 °  
**Total Corr Mag North->True North:** 8.2802 °  
**Local Coord Referenced To:** Well Head

Comments	MD (ft)	Incl (°)	Azim True (°)	TVD (ft)	VSEC (ft)	NS (ft)	EW (ft)	DLS (°/100ft)	Northing (ftUS)	Easting (ftUS)	Latitude (°)	Longitude (°)
Surface	0.00	0.00	0.00	0.00	0.00	0.00	0.00	N/A	1359298.34	3187264.95	40.317728	-104.828428
	100.00	0.00	44.53	100.00	0.00	0.00	0.00	0.00	1359298.34	3187264.95	40.317728	-104.828428
	200.00	0.00	44.53	200.00	0.00	0.00	0.00	0.00	1359298.34	3187264.95	40.317728	-104.828428
KOP, Build 2	250.00	0.00	44.53	250.00	0.00	0.00	0.00	0.00	1359298.34	3187264.95	40.317728	-104.828428
DLS	300.00	1.00	44.53	300.00	-0.30	0.31	0.31	2.00	1359298.65	3187265.25	40.317729	-104.828427
Hold	346.72	1.93	44.53	346.70	-1.12	1.16	1.15	2.00	1359299.51	3187266.09	40.317731	-104.828424
	400.00	1.93	44.53	399.95	-2.35	2.45	2.41	0.00	1359300.80	3187267.34	40.317735	-104.828419
	500.00	1.93	44.53	499.89	-4.67	4.85	4.77	0.00	1359303.23	3187269.69	40.317741	-104.828411
	600.00	1.93	44.53	599.84	-6.98	7.26	7.14	0.00	1359305.65	3187272.04	40.317748	-104.828402
	700.00	1.93	44.53	699.78	-9.30	9.66	9.51	0.00	1359308.07	3187274.39	40.317755	-104.828394
	800.00	1.93	44.53	799.72	-11.61	12.07	11.88	0.00	1359310.50	3187276.73	40.317761	-104.828385
	900.00	1.93	44.53	899.67	-13.93	14.48	14.24	0.00	1359312.92	3187279.08	40.317768	-104.828377
	1000.00	1.93	44.53	999.61	-16.24	16.88	16.61	0.00	1359315.35	3187281.43	40.317774	-104.828368
	1100.00	1.93	44.53	1099.55	-18.56	19.29	18.98	0.00	1359317.77	3187283.78	40.317781	-104.828360
	1200.00	1.93	44.53	1199.50	-20.87	21.70	21.35	0.00	1359320.19	3187286.13	40.317788	-104.828351
	1300.00	1.93	44.53	1299.44	-23.18	24.10	23.71	0.00	1359322.62	3187288.48	40.317794	-104.828343
	1400.00	1.93	44.53	1399.38	-25.50	26.51	26.08	0.00	1359325.04	3187290.83	40.317801	-104.828334
	1500.00	1.93	44.53	1499.32	-27.81	28.91	28.45	0.00	1359327.47	3187293.18	40.317807	-104.828326
	1600.00	1.93	44.53	1599.27	-30.13	31.32	30.82	0.00	1359329.89	3187295.53	40.317814	-104.828317
	1700.00	1.93	44.53	1699.21	-32.44	33.73	33.18	0.00	1359332.31	3187297.88	40.317821	-104.828309
	1800.00	1.93	44.53	1799.15	-34.76	36.13	35.55	0.00	1359334.74	3187300.23	40.317827	-104.828301
	1900.00	1.93	44.53	1899.10	-37.07	38.54	37.92	0.00	1359337.16	3187302.57	40.317834	-104.828292
	2000.00	1.93	44.53	1999.04	-39.39	40.95	40.29	0.00	1359339.59	3187304.92	40.317840	-104.828284
	2100.00	1.93	44.53	2098.98	-41.70	43.35	42.65	0.00	1359342.01	3187307.27	40.317847	-104.828275
	2200.00	1.93	44.53	2198.93	-44.02	45.76	45.02	0.00	1359344.43	3187309.62	40.317854	-104.828267
	2300.00	1.93	44.53	2298.87	-46.33	48.16	47.39	0.00	1359346.86	3187311.97	40.317860	-104.828258
	2400.00	1.93	44.53	2398.81	-48.65	50.57	49.76	0.00	1359349.28	3187314.32	40.317867	-104.828250
	2500.00	1.93	44.53	2498.75	-50.96	52.98	52.12	0.00	1359351.71	3187316.67	40.317873	-104.828241
	2600.00	1.93	44.53	2598.70	-53.27	55.38	54.49	0.00	1359354.13	3187319.02	40.317880	-104.828233
	2700.00	1.93	44.53	2698.64	-55.59	57.79	56.86	0.00	1359356.55	3187321.37	40.317887	-104.828224
	2800.00	1.93	44.53	2798.58	-57.90	60.19	59.23	0.00	1359358.98	3187323.72	40.317893	-104.828216
	2900.00	1.93	44.53	2898.53	-60.22	62.60	61.59	0.00	1359361.40	3187326.07	40.317900	-104.828207
	3000.00	1.93	44.53	2998.47	-62.53	65.01	63.96	0.00	1359363.82	3187328.41	40.317906	-104.828199
	3100.00	1.93	44.53	3098.41	-64.85	67.41	66.33	0.00	1359366.25	3187330.76	40.317913	-104.828190
	3200.00	1.93	44.53	3198.36	-67.16	69.82	68.70	0.00	1359368.67	3187333.11	40.317920	-104.828182
	3300.00	1.93	44.53	3298.30	-69.48	72.23	71.06	0.00	1359371.10	3187335.46	40.317926	-104.828173
	3400.00	1.93	44.53	3398.24	-71.79	74.63	73.43	0.00	1359373.52	3187337.81	40.317933	-104.828165
	3500.00	1.93	44.53	3498.18	-74.11	77.04	75.80	0.00	1359375.94	3187340.16	40.317939	-104.828156
	3600.00	1.93	44.53	3598.13	-76.42	79.44	78.17	0.00	1359378.37	3187342.51	40.317946	-104.828148
	3700.00	1.93	44.53	3698.07	-78.74	81.85	80.53	0.00	1359380.79	3187344.86	40.317953	-104.828139
	3800.00	1.93	44.53	3798.01	-81.05	84.26	82.90	0.00	1359383.22	3187347.21	40.317959	-104.828131
	3900.00	1.93	44.53	3897.96	-83.37	86.66	85.27	0.00	1359385.64	3187349.56	40.317966	-104.828122
	4000.00	1.93	44.53	3997.90	-85.68	89.07	87.64	0.00	1359388.06	3187351.91	40.317972	-104.828114
	4100.00	1.93	44.53	4097.84	-87.99	91.48	90.00	0.00	1359390.49	3187354.25	40.317979	-104.828105
	4200.00	1.93	44.53	4197.79	-90.31	93.88	92.37	0.00	1359392.91	3187356.60	40.317986	-104.828097
	4300.00	1.93	44.53	4297.73	-92.62	96.29	94.74	0.00	1359395.34	3187358.95	40.317992	-104.828088
	4400.00	1.93	44.53	4397.67	-94.94	98.69	97.11	0.00	1359397.76	3187361.30	40.317999	-104.828080
	4500.00	1.93	44.53	4497.61	-97.25	101.10	99.47	0.00	1359400.18	3187363.65	40.318006	-104.828071
	4600.00	1.93	44.53	4597.56	-99.57	103.51	101.84	0.00	1359402.61	3187366.00	40.318012	-104.828063
	4700.00	1.93	44.53	4697.50	-101.88	105.91	104.21	0.00	1359405.03	3187368.35	40.318019	-104.828054
	4800.00	1.93	44.53	4797.44	-104.20	108.32	106.57	0.00	1359407.46	3187370.70	40.318025	-104.828046
	4900.00	1.93	44.53	4897.39	-106.51	110.73	108.94	0.00	1359409.88	3187373.05	40.318032	-104.828037
	5000.00	1.93	44.53	4997.33	-108.83	113.13	111.31	0.00	1359412.30	3187375.40	40.318039	-104.828029
	5100.00	1.93	44.53	5097.27	-111.14	115.54	113.68	0.00	1359414.73	3187377.74	40.318045	-104.828020
	5200.00	1.93	44.53	5197.22	-113.46	117.94	116.04	0.00	1359417.15	3187380.09	40.318052	-104.828012
	5300.00	1.93	44.53	5297.16	-115.77	120.35	118.41	0.00	1359419.58	3187382.44	40.318058	-104.828003
	5400.00	1.93	44.53	5397.10	-118.08	122.76	120.78	0.00	1359422.00	3187384.79	40.318065	-104.827995
	5500.00	1.93	44.53	5497.04	-120.40	125.16	123.15	0.00	1359424.42	3187387.14	40.318072	-104.827986
	5600.00	1.93	44.53	5596.99	-122.71	127.57	125.51	0.00	1359426.85	3187389.49	40.318078	-104.827978
	5700.00	1.93	44.53	5696.93	-125.03	129.98	127.88	0.00	1359429.27	3187391.84	40.318085	-104.827969
	5800.00	1.93	44.53	5796.87	-127.34	132.38	130.25	0.00	1359431.70	3187394.19	40.318091	-104.827961
	5900.00	1.93	44.53	5896.82	-129.66	134.79	132.62	0.00	1359434.12	3187396.54	40.318098	-104.827952
	6000.00	1.93	44.53	5996.76	-131.97	137.19	134.98	0.00	1359436.54	3187398.89	40.318105	-104.827944
	6100.00	1.93	44.53	6096.70	-134.29	139.60	137.35	0.00	1359438.97	3187401.24	40.318111	-104.827935
	6200.00	1.93	44.53	6196.65	-136.60	142.01	139.72	0.00	1359441.39	3187403.58	40.318118	-104.827927
	6300.00	1.93	44.53	6296.59	-138.92	144.41	142.09	0.00	1359443.82	3187405.93	40.318124	-104.827918
KOP, Build/Turn 9 DLS	6359.23	1.93	44.53	6355.79	-140.29	145.84	143.49	0.00	1359445.25	3187407.33	40.318128	-104.827913
	6400.00	2.71	301.37	6396.53	-139.93	146.83	143.15	9.00	1359446.24	3187406.98	40.318131	-104.827915
	6500.00	11.41	277.40	6495.69	-128.03	149.34	131.30	9.00	1359448.66	3187395.11	40.318138	-104.827957
	6600.00	20.37	274.24	6591.78	-100.76	151.90	104.08	9.00	1359451.02	3187367.87	40.318145	-104.828055
	6700.00	29.35	272.97	6682.42	-58.79	154.46	62.16	9.00	1359453.26	3187325.94	40.318152	-104.828205
	6800.00	38.35	272.25	6765.38	-3.16	156.96	6.57	9.00	1359455.33	3187270.33	40.318159	-104.828404
	6900.00	47.34	271.77	6838.63	64.76	159.32	-61.31	9.00	1359457.18	3187202.43	40.318165	-104.828648
	7000.00	56.34	271.42	6900.36	143.30	161.49	-138.83	9.00	1359458.75	3187123.91	40.318171	-104.828929
	7100.00	65.33	271.13	6949.04	230.54	163.42	-227.04	9.00	1359460.02	3187036.69	40.318177	-104.829242

Comments	MD (ft)	Incl (°)	Azim True (°)	TVD (ft)	VSEC (ft)	NS (ft)	EW (ft)	DLS (°/100ft)	Northing (ftUS)	Easting (ftUS)	Latitude (°)	Longitude (°)
Bernhardt 5-02N-14B-L TOP	7200.00	74.33	270.88	6983.49	324.31	165.06	-320.80	9.00	1359460.95	3186942.93	40.318181	-104.829578
	7300.00	83.33	270.65	7002.84	422.31	166.37	-418.79	9.00	1359461.52	3186844.93	40.318185	-104.829930
	7388.35	91.28	270.46	7007.00	510.48	167.22	-506.97	9.00	1359461.71	3186756.76	40.318187	-104.830246
	7400.00	91.27	270.46	7006.74	522.13	167.32	-518.62	0.01	1359461.71	3186745.11	40.318187	-104.830288
	7500.00	91.26	270.46	7004.53	622.09	168.12	-618.59	0.01	1359461.76	3186645.16	40.318189	-104.830646
	7600.00	91.25	270.46	7002.34	722.06	168.91	-718.56	0.01	1359461.80	3186545.16	40.318192	-104.831005
	7700.00	91.24	270.45	7000.17	822.03	169.71	-818.53	0.01	1359461.83	3186445.19	40.318194	-104.831363
	7800.00	91.22	270.45	6998.03	921.99	170.50	-918.51	0.01	1359461.87	3186345.22	40.318196	-104.831722
	7900.00	91.21	270.45	6995.91	1021.96	171.28	-1018.48	0.01	1359461.89	3186245.25	40.318198	-104.832080
	8000.00	91.20	270.45	6993.81	1121.93	172.06	-1118.46	0.01	1359461.92	3186145.27	40.318200	-104.832439
	8100.00	91.18	270.45	6991.73	1221.90	172.84	-1218.43	0.01	1359461.94	3186045.30	40.318202	-104.832797
	8200.00	91.17	270.44	6989.67	1321.87	173.62	-1318.41	0.01	1359461.96	3185945.32	40.318204	-104.833156
	8300.00	91.16	270.44	6987.64	1421.84	174.39	-1418.38	0.01	1359461.97	3185845.35	40.318207	-104.833514
	8400.00	91.15	270.44	6985.63	1521.81	175.16	-1518.36	0.01	1359461.99	3185745.37	40.318209	-104.833873
	8500.00	91.13	270.44	6983.64	1621.78	175.92	-1618.34	0.01	1359461.99	3185645.40	40.318211	-104.834231
	8600.00	91.12	270.44	6981.68	1721.75	176.68	-1718.32	0.01	1359462.00	3185545.42	40.318213	-104.834590
	8700.00	91.11	270.43	6979.73	1821.72	177.44	-1818.29	0.01	1359462.00	3185445.45	40.318215	-104.834948
	8800.00	91.09	270.43	6977.81	1921.69	178.20	-1918.27	0.01	1359461.99	3185345.47	40.318217	-104.835307
	8900.00	91.08	270.43	6975.91	2021.66	178.95	-2018.25	0.01	1359461.99	3185245.49	40.318219	-104.835666
	9000.00	91.07	270.43	6974.04	2121.64	179.69	-2118.23	0.01	1359461.98	3185145.51	40.318221	-104.836024
	9100.00	91.06	270.42	6972.18	2221.61	180.44	-2218.21	0.01	1359461.96	3185045.53	40.318223	-104.836383
	9200.00	91.04	270.42	6970.35	2321.58	181.18	-2318.19	0.01	1359461.95	3184945.56	40.318225	-104.836741
	9300.00	91.03	270.42	6968.54	2421.55	181.91	-2418.17	0.01	1359461.92	3184845.58	40.318227	-104.837100
	9400.00	91.02	270.42	6966.75	2521.53	182.65	-2518.15	0.01	1359461.90	3184745.60	40.318229	-104.837458
	9500.00	91.01	270.42	6964.99	2621.50	183.37	-2618.14	0.01	1359461.87	3184645.62	40.318231	-104.837817
	9600.00	90.99	270.41	6963.24	2721.48	184.10	-2718.12	0.01	1359461.84	3184545.64	40.318233	-104.838175
	9700.00	90.98	270.41	6961.52	2821.45	184.82	-2818.10	0.01	1359461.80	3184445.66	40.318235	-104.838534
	9800.00	90.97	270.41	6959.82	2921.43	185.54	-2918.08	0.01	1359461.76	3184345.67	40.318237	-104.838892
	9900.00	90.95	270.41	6958.15	3021.40	186.25	-3018.07	0.01	1359461.72	3184245.69	40.318239	-104.839251
	10000.00	90.94	270.41	6956.49	3121.38	186.96	-3118.05	0.01	1359461.68	3184145.71	40.318241	-104.839609
	10100.00	90.93	270.40	6954.86	3221.35	187.67	-3218.04	0.01	1359461.63	3184045.73	40.318243	-104.839968
	10200.00	90.92	270.40	6953.25	3321.33	188.38	-3318.02	0.01	1359461.57	3183945.75	40.318244	-104.840327
	10300.00	90.90	270.40	6951.67	3421.31	189.08	-3418.01	0.01	1359461.52	3183845.76	40.318246	-104.840685
	10400.00	90.89	270.40	6950.10	3521.28	189.77	-3517.99	0.01	1359461.46	3183745.78	40.318248	-104.841044
	10500.00	90.88	270.40	6948.56	3621.26	190.47	-3617.97	0.01	1359461.39	3183645.80	40.318250	-104.841402
	10600.00	90.86	270.39	6947.04	3721.24	191.16	-3717.96	0.01	1359461.32	3183545.81	40.318252	-104.841761
	10700.00	90.85	270.39	6945.54	3821.22	191.84	-3817.95	0.01	1359461.25	3183445.83	40.318254	-104.842119
	10800.00	90.84	270.39	6944.07	3921.19	192.52	-3917.94	0.01	1359461.18	3183345.84	40.318256	-104.842478
	10900.00	90.83	270.39	6942.61	4021.17	193.20	-4017.92	0.01	1359461.10	3183245.86	40.318257	-104.842836
	11000.00	90.81	270.39	6941.18	4121.15	193.88	-4117.91	0.01	1359461.02	3183145.87	40.318259	-104.843195
	11100.00	90.80	270.38	6939.77	4221.13	194.55	-4217.90	0.01	1359460.93	3183045.89	40.318261	-104.843554
	11200.00	90.79	270.38	6938.39	4321.11	195.22	-4317.89	0.01	1359460.84	3182945.90	40.318263	-104.843912
	11300.00	90.78	270.38	6937.02	4421.09	195.88	-4417.87	0.01	1359460.75	3182845.92	40.318265	-104.844271
	11400.00	90.76	270.38	6935.68	4521.07	196.54	-4517.86	0.01	1359460.65	3182745.93	40.318266	-104.844629
	11500.00	90.75	270.38	6934.36	4621.05	197.20	-4617.85	0.01	1359460.55	3182645.94	40.318268	-104.844988
	11600.00	90.74	270.37	6933.06	4721.03	197.86	-4717.84	0.01	1359460.45	3182545.96	40.318270	-104.845346
	11700.00	90.72	270.37	6931.79	4821.01	198.51	-4817.83	0.01	1359460.34	3182445.97	40.318272	-104.845705
	11800.00	90.71	270.37	6930.54	4920.99	199.15	-4917.82	0.01	1359460.23	3182345.98	40.318273	-104.846064
	11900.00	90.70	270.37	6929.31	5020.97	199.80	-5017.81	0.01	1359460.12	3182245.99	40.318275	-104.846422
	12000.00	90.69	270.37	6928.10	5120.95	200.43	-5117.80	0.01	1359460.00	3182146.00	40.318277	-104.846781
	12100.00	90.67	270.36	6926.91	5220.93	201.07	-5217.79	0.01	1359459.88	3182046.02	40.318278	-104.847139
	12200.00	90.66	270.36	6925.75	5320.91	201.70	-5317.79	0.01	1359459.75	3181946.03	40.318280	-104.847498
	12300.00	90.65	270.36	6924.61	5420.89	202.33	-5417.78	0.01	1359459.63	3181846.04	40.318282	-104.847856
	12400.00	90.63	270.36	6923.49	5520.86	202.96	-5517.77	0.01	1359459.49	3181746.05	40.318283	-104.848215
	12500.00	90.62	270.36	6922.40	5620.86	203.58	-5617.76	0.01	1359459.36	3181646.06	40.318285	-104.848574
	12600.00	90.61	270.35	6921.32	5720.84	204.20	-5717.75	0.01	1359459.22	3181546.07	40.318287	-104.848932
	12700.00	90.60	270.35	6920.27	5820.82	204.81	-5817.75	0.01	1359459.08	3181446.08	40.318288	-104.849291
	12800.00	90.58	270.35	6919.24	5920.80	205.42	-5917.74	0.01	1359458.93	3181346.09	40.318290	-104.849649
	12900.00	90.57	270.35	6918.23	6020.79	206.03	-6017.73	0.01	1359458.78	3181246.10	40.318292	-104.850008
	13000.00	90.56	270.34	6917.25	6120.77	206.63	-6117.72	0.01	1359458.63	3181146.11	40.318293	-104.850366
	13100.00	90.55	270.34	6916.29	6220.75	207.23	-6217.72	0.01	1359458.47	3181046.12	40.318295	-104.850725
	13200.00	90.53	270.34	6915.35	6320.74	207.83	-6317.71	0.01	1359458.31	3180946.13	40.318296	-104.851084
	13300.00	90.52	270.34	6914.43	6420.72	208.42	-6417.71	0.01	1359458.14	3180846.14	40.318298	-104.851442
	13400.00	90.51	270.34	6913.53	6520.70	209.01	-6517.70	0.01	1359457.98	3180746.14	40.318299	-104.851801
	13500.00	90.49	270.33	6912.66	6620.69	209.60	-6617.69	0.01	1359457.81	3180646.15	40.318301	-104.852159
	13600.00	90.48	270.33	6911.81	6720.67	210.18	-6717.69	0.01	1359457.63	3180546.16	40.318302	-104.852518
	13700.00	90.47	270.33	6910.98	6820.65	210.76	-6817.68	0.01	1359457.45	3180446.17	40.318304	-104.852877
	13800.00	90.46	270.33	6910.17	6920.64	211.33	-6917.68	0.01	1359457.27	3180346.18	40.318305	-104.853235
	13900.00	90.44	270.33	6909.39	7020.62	211.91	-7017.67	0.01	1359457.08	3180246.18	40.318307	-104.853594
	14000.00	90.43	270.32	6908.63	7120.61	212.47	-7117.67	0.01	1359456.89	3180146.19	40.318308	-104.853952
	14100.00	90.42	270.32	6907.89	7220.59	213.04	-7217.67	0.01	1359456.70	3180046.20	40.318310	-104.854311
	14200.00	90.40	270.32	6907.17	7320.58	213.60	-7317.66	0.01	1359456.50	3179946.21	40.318311	-104.854670
	14300.00	90.39	270.32	6906.48	7420.56	214.16	-7417.66	0.01	1359456.30	3179846.21	40.318313	-104.855028
	14400.00	90.38	270.32	6905.80	7520.54	214.71	-7517.65	0.01	1359456.10	3179746.22	40.318314	-104.855387
	14500.00	90.37	270.31	6905.15	7620.53	215.26	-7617.65	0.01	1359455.89	3179646.23	40.318316	-104.855745
	14600.00	90.35	270.31	6904.53	7720.51	215.81	-7717.65	0.01	1359455.68	3179546.23	40.318317	-104.856104
	14700.00	90.34	270.31	6903.92	7820.50	216.35	-7817.64	0.01	1359455.47	3179446.24	40.318318</	

Comments	MD (ft)	Incl (°)	Azim True (°)	TVD (ft)	VSEC (ft)	NS (ft)	EW (ft)	DLS (°/100ft)	Northing (ftUS)	Easting (ftUS)	Latitude (°)	Longitude (°)
----------	------------	-------------	------------------	-------------	--------------	------------	------------	------------------	--------------------	-------------------	-----------------	------------------

Survey Type: Def Plan

Survey Error Model: ISCWSA Rev 0 \*\*\* 3-D 95.000% Confidence 2.7955 sigma  
Survey Program:

Description	Part	MD From (ft)	MD To (ft)	EOU Freq (ft)	Hole Size (in)	Casing Diameter (in)	Expected Max Inclination (deg)	Survey Tool Type	Borehole / Survey
	1	0.000	4.000	1/100.000	13.500	9.625		NAL_MWD_IFR1-Depth Only	Original Hole / Bernhardt 5-02N-14B-L R0 mdv 17Sept19
	1	4.000	1800.000	1/100.000	13.500	9.625		NAL_MWD_IFR1	Original Hole / Bernhardt 5-02N-14B-L R0 mdv 17Sept19
	1	1800.000	17465.910	1/100.000	8.500	5.500		NAL_MWD_IFR1+MS	Original Hole / Bernhardt 5-02N-14B-L R0 mdv 17Sept19