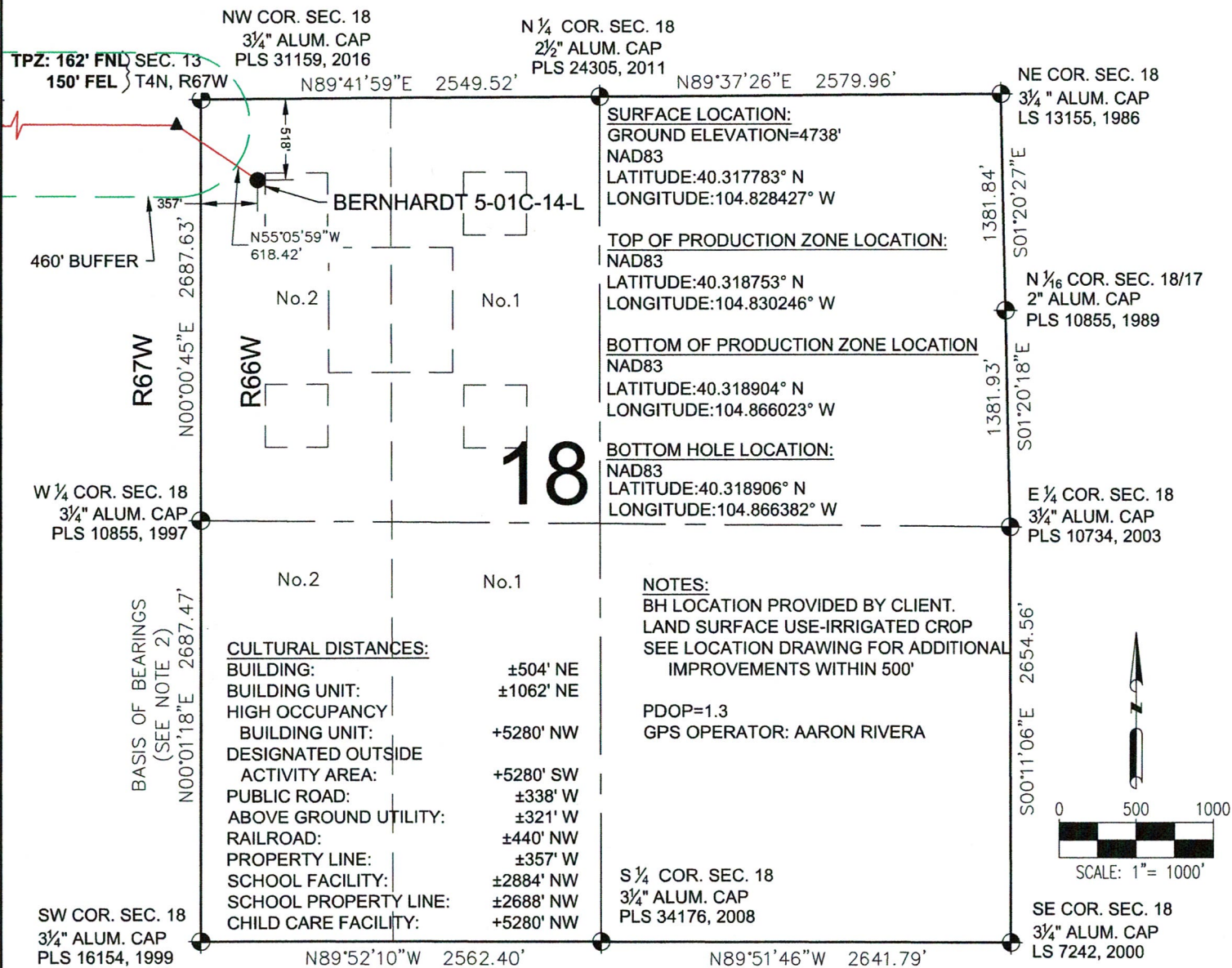









BERNHARDT 5-01C-14-L
WELL LOCATION CERTIFICATE



LEGEND

-  = EXISTING MONUMENT  = BOTTOM OF PRODUCTION ZONE
 = CALCULATED POSITION  = TOP OF PRODUCTION ZONE
 = PROPOSED WELL TPZ = TOP OF PRODUCTION ZONE
 = EXISTING WELL BHL = BOTTOM HOLE LOCATION
 = BOTTOM HOLE BPZ = BOTTOM OF PRODUCTION ZONE

NOTES:

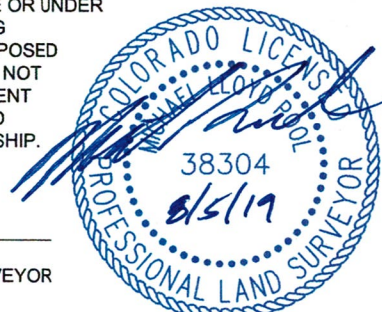
1. THIS FIELD SURVEY CONFORMS TO THE MINIMUM STANDARDS SET BY THE C.O.G.C.C., RULE NO. 215
2. BEARINGS ARE BASED ON THE ASSUMPTION THAT THE WEST LINE OF THE SOUTHWEST QUARTER OF SECTION 18, BEARS N00°01'18"E BETWEEN THE MONUMENTS SHOWN HEREON.
3. ALL DISTANCES AND BEARINGS SHOWN HEREON ARE GROUND VALUES AS GPS MEASURED IN THE FIELD, WITH TIES TO WELLS MEASURED PERPENDICULAR TO SECTION LINES. THIS LOW DISTORTION PROJECTION (LDP) IS BASED ON THE NORTH AMERICAN DATUM OF 1983, U.S. SURVEY FOOT WITH A LATITUDE ORIGIN OF 40.304428°N, A CENTRAL MERIDIAN LONGITUDE OF 104.773161°W, AND A SCALE FACTOR ON THE CENTRAL MERIDIAN OF 1.000224 (EXACT). THE LDP BASIS OF BEARINGS IS GEODETIC NORTH.
4. FIELD VERIFICATION OF MONUMENTS COMPLETED ON 11-1-16 THRU 11-2-16 EXCEPT NORTH LINE OF SECTION 13 COMPLETED ON 3-7-17.

NOTICE: ACCORDING TO COLORADO LAW YOU MUST COMMENCE ANY LEGAL ACTION BASED UPON ANY DEFECT IN THIS SURVEY WITHIN THREE YEARS AFTER YOU FIRST DISCOVER SUCH DEFECT. IN NO EVENT MAY ANY ACTION BASED UPON ANY DEFECT IN THIS SURVEY BE COMMENCED MORE THAN TEN YEARS FROM THIS SAID DATE OF THIS CERTIFICATION SHOWN HEREON.

WELL BERNHARDT 5-01C-14-L TO
BE LOCATED 518' FNL & 357' FWL

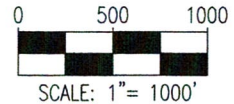
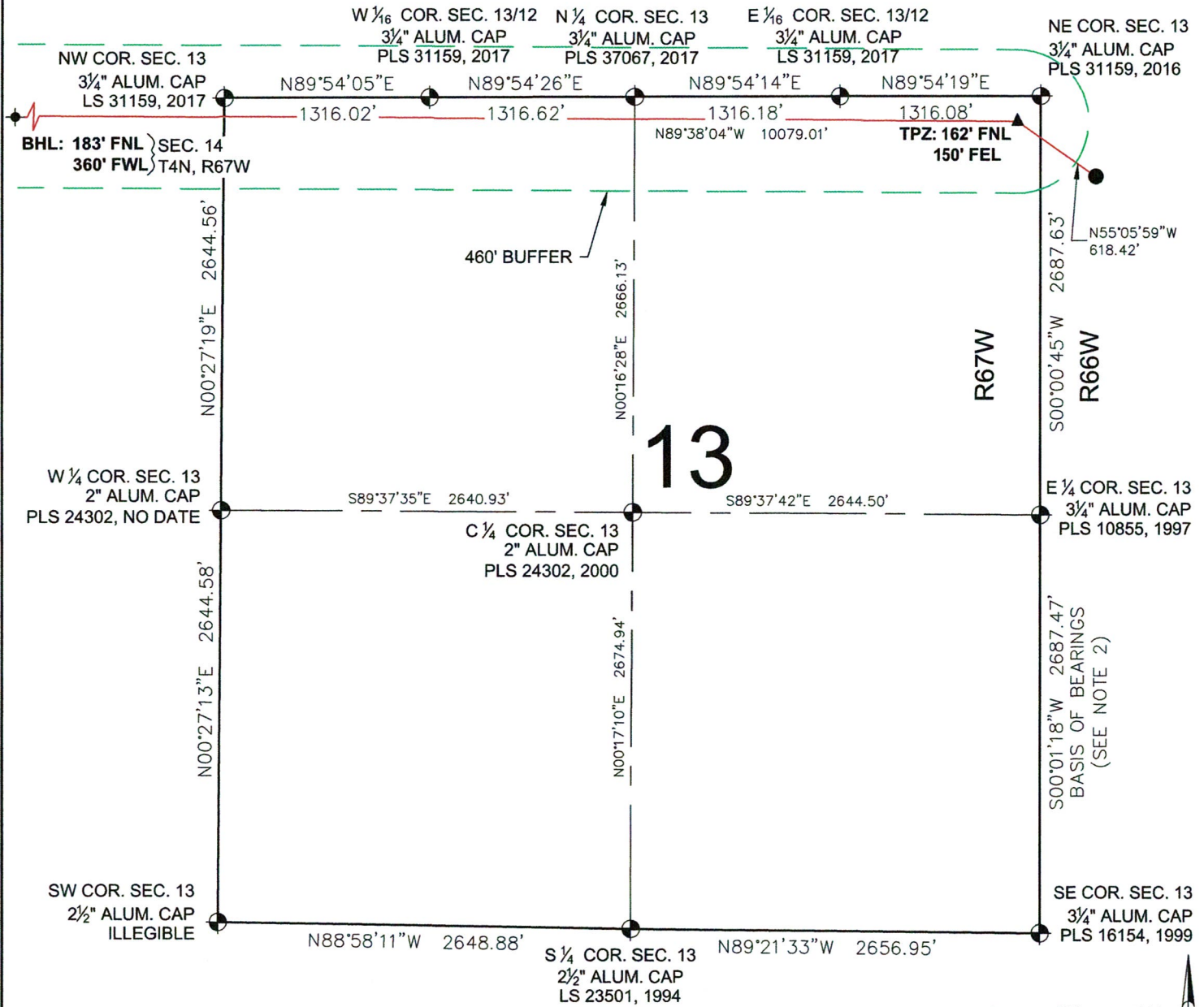
SURVEYOR IN THE STATE OF COLORADO DO HEREBY CERTIFY TO **SRC ENERGY, INC.** THAT THE SURVEY AND WELL LOCATION CERTIFICATE SHOWN HEREON WERE DONE BY ME OR UNDER MY DIRECT SUPERVISION AND THAT THE DRAWING SHOWN HEREON ACCURATELY DEPICTS THE PROPOSED LOCATION OF THE WELL. THIS CERTIFICATE DOES NOT REPRESENT A LAND SURVEY PLAT OR IMPROVEMENT SURVEY PLAT AS DEFINED BY C.R.S. 38-51-102 AND CANNOT BE RELIED UPON TO DETERMINE OWNERSHIP.

MICHAEL L. POOL, PLS 38304
COLORADO LICENSED PROFESSIONAL LAND SURVEYOR
FOR AND ON BEHALF OF P.F.S., LLC



SHEET 1 OF 3

BERNHARDT 5-01C-14-L WELL LOCATION CERTIFICATE





LEGEND

- ⊕ = EXISTING MONUMENT
- = CALCULATED POSITION
- = PROPOSED WELL
- ◆ = EXISTING WELL
- ⬮ = BOTTOM HOLE
- △ = BOTTOM OF PRODUCTION ZONE
- ▲ = TOP OF PRODUCTION ZONE
- TPZ = TOP OF PRODUCTION ZONE
- BHL = BOTTOM HOLE LOCATION
- BPZ = BOTTOM OF PRODUCTION ZONE

MICHAEL L. POOL, PLS 38304
COLORADO LICENSED PROFESSIONAL LAND SURVEYOR
FOR AND ON BEHALF OF P.F.S., LLC



SHEET 2 OF 3

PREPARED BY:  8620 Wolff Court Westminster, CO 80031 (303) 928-7128 www.ascentgeomatics.com	FIELD DATE: 11-10-16 DRAWING DATE: 08-02-19 BY: DNS CHECKED BY: JW	WELL NAME: BERNHARDT 5-01C-14-L SURFACE LOCATION: LOT 2 NW 1/4 SEC. 18, T4N, R66W, 6TH P.M. WELD COUNTY, COLORADO	PREPARED FOR:  SRC ENERGY
---	---	---	--

A circular blue ink seal for a Colorado Licensed Professional Land Surveyor. The outer ring contains the text "COLORADO LICENSED" at the top and "PROFESSIONAL LAND SURVEYOR" at the bottom, separated by dots. Inside the ring, the name "MICHAEL LLOYD B. SMITH" is written in a cursive script. Below the name, the number "38304" and the date "8/5/19" are stamped in a bold, sans-serif font. The seal is crossed out with several diagonal blue ink lines.

SRC ENERGY