



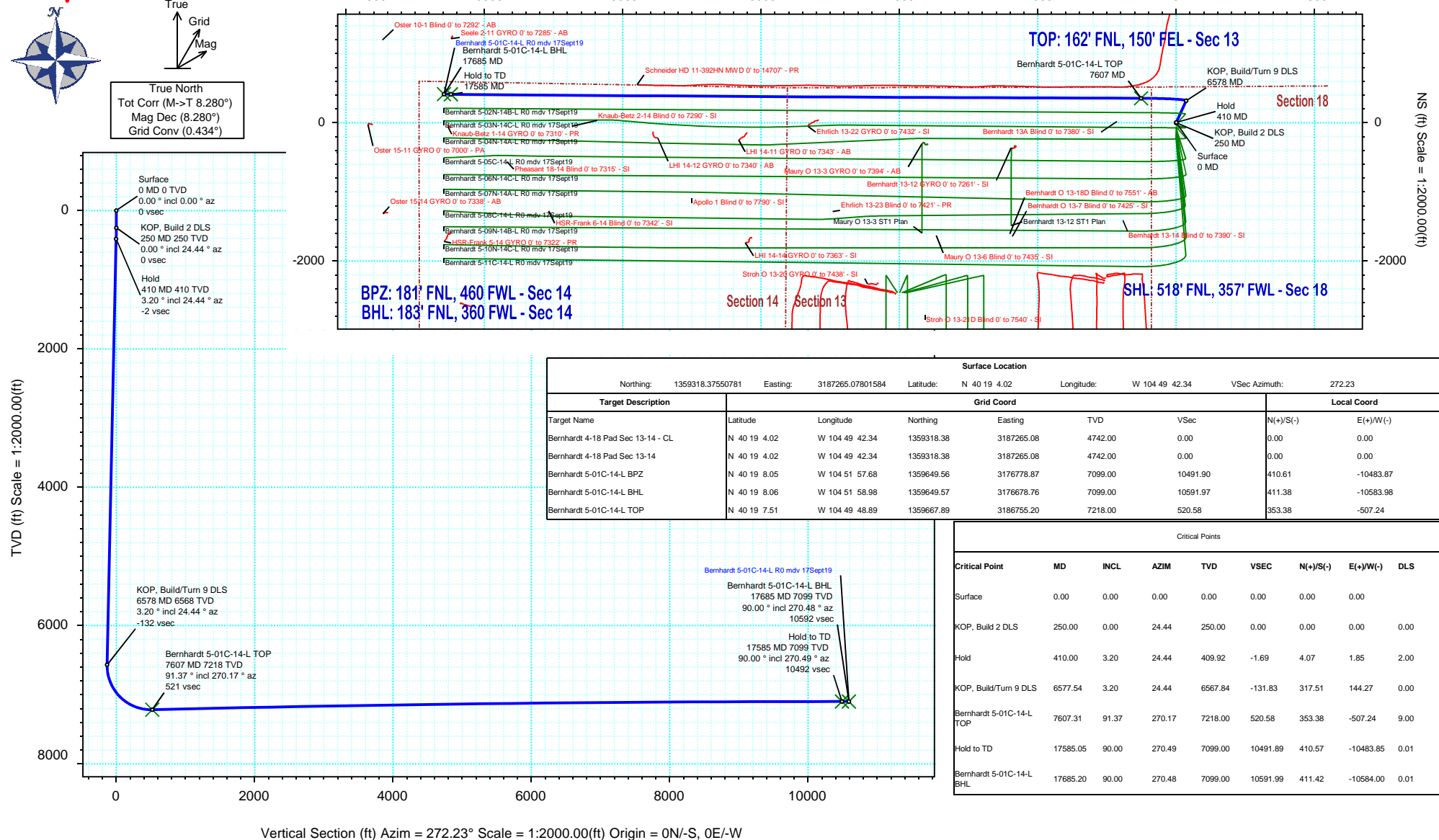
SRC Energy

Rev 0

Schlumberger

Borehole: <div>Original Hole</div>				Well: <div>Bernhardt 5-01C-14-L</div>				Field: <div>CO, Weld County (NAD 83 NZ) - SRC</div>				Structure: <div>SRC Energy 18-04N-66W (Bernhardt 4-18 Pad)</div>											
Gravity & Magnetic Parameters								Surface Location				Miscellaneous											
Model:		HDGM 2019		Dip:		66.674°		Date:		17-Sep-2019		Lat:		N 40 19 4.02		Northing:		1359318.38ftUS		Grid Conv:		0.4339°	
MagDec:		8.28°		FS:		52145.367nT		Gravity FS:		999.023mgn (9.80665 Based)		Lon:		W 104 49 42.34		Easting:		3187265.08ftUS		Scale Fact:		0.99995753	
												Slot: Bernhardt 5-01C-14-L				TVD Ref: KB 4ft(4742ft above MSL)							
												Plan: Bernhardt 5-01C-14-L R0 mdv 17Sept19											

Proposal



Bernhardt 5-01C-14-L R0 mdv 17Sept19 Proposal Geodetic Report

(Def Plan)

Report Date: September 20, 2019 - 11:28 AM
Client: SRC Energy
Field: CO, Weld County (NAD 83 NZ) - SRC
Structure / Slot: SRC Energy 18-04N-66W (Bernhardt 4-18 Pad) / Bernhardt 5-01C-14-L
Well: Bernhardt 5-01C-14-L
Borehole: Original Hole
UWI / API#: Unknown / Unknown
Survey Name: Bernhardt 5-01C-14-L R0 mdv 17Sept19
Survey Date: September 17, 2019
Tort / AHD / DDI / ERD Ratio: 97.288 ° / 11081.476 ft / 6.422 / 1.535
Coordinate Reference System: NAD83 Colorado State Plane, Northern Zone, US Feet
Location Lat / Long: N 40° 19' 4.01880", W 104° 49' 42.33720"
Location Grid N/E Y/X: N 1359318.376 ftUS, E 3187265.078 ftUS
CRS Grid Convergence Angle: 0.4339 °
Grid Scale Factor: 0.99995753
Version / Patch: 2.10.782.0

Survey / DLS Computation: Minimum Curvature / Lubinski
Vertical Section Azimuth: 272.226 ° (True North)
Vertical Section Origin: 0.000 ft, 0.000 ft
TVD Reference Datum: KB 4ft
TVD Reference Elevation: 4742.000 ft above MSL
Seabed / Ground Elevation: 4738.000 ft above MSL
Magnetic Declination: 8.280 °
Total Gravity Field Strength: 999.0229mgn (9.80665 Based)
Gravity Model: GARM
Total Magnetic Field Strength: 52145.367 nT
Magnetic Dip Angle: 66.674 °
Declination Date: September 17, 2019
Magnetic Declination Model: HDGM 2019
North Reference: True North
Grid Convergence Used: 0.0000 °
Total Corr Mag North->True North: 8.2802 °
Local Coord Referenced To: Well Head

Comments	MD (ft)	Incl (°)	Azim True (°)	TVD (ft)	VSEC (ft)	NS (ft)	EW (ft)	DLS (°/100ft)	Northing (ftUS)	Easting (ftUS)	Latitude (°)	Longitude (°)
Surface	0.00	0.00	0.00	0.00	0.00	0.00	0.00	N/A	1359318.38	3187265.08	40.317783	-104.828427
	100.00	0.00	24.44	100.00	0.00	0.00	0.00	0.00	1359318.38	3187265.08	40.317783	-104.828427
	200.00	0.00	24.44	200.00	0.00	0.00	0.00	0.00	1359318.38	3187265.08	40.317783	-104.828427
KOP, Build 2 DLS	250.00	0.00	24.44	250.00	0.00	0.00	0.00	0.00	1359318.38	3187265.08	40.317783	-104.828427
	300.00	1.00	24.44	300.00	-0.16	0.40	0.18	2.00	1359318.77	3187265.26	40.317784	-104.828426
	400.00	3.00	24.44	399.93	-1.48	3.57	1.62	2.00	1359321.96	3187266.67	40.317793	-104.828421
Hold	410.00	3.20	24.44	409.92	-1.69	4.07	1.85	2.00	1359322.46	3187266.90	40.317794	-104.828420
	500.00	3.20	24.44	499.78	-3.59	8.64	3.93	0.00	1359327.05	3187268.94	40.317807	-104.828413
	600.00	3.20	24.44	599.62	-5.70	13.72	6.24	0.00	1359332.14	3187271.21	40.317821	-104.828405
	700.00	3.20	24.44	699.46	-7.81	18.81	8.54	0.00	1359337.24	3187273.48	40.317835	-104.828396
	800.00	3.20	24.44	799.31	-9.92	23.89	10.85	0.00	1359342.34	3187275.75	40.317849	-104.828388
	900.00	3.20	24.44	899.15	-12.03	28.97	13.16	0.00	1359347.44	3187278.02	40.317863	-104.828380
	1000.00	3.20	24.44	999.00	-14.14	34.05	15.47	0.00	1359352.54	3187280.29	40.317876	-104.828372
	1100.00	3.20	24.44	1098.84	-16.25	39.13	17.78	0.00	1359357.64	3187282.56	40.317890	-104.828363
	1200.00	3.20	24.44	1198.69	-18.36	44.22	20.09	0.00	1359362.74	3187284.83	40.317904	-104.828355
	1300.00	3.20	24.44	1298.53	-20.47	49.30	22.40	0.00	1359367.84	3187287.10	40.317918	-104.828347
	1400.00	3.20	24.44	1398.37	-22.58	54.38	24.71	0.00	1359372.94	3187289.37	40.317932	-104.828338
	1500.00	3.20	24.44	1498.22	-24.69	59.46	27.02	0.00	1359378.04	3187291.64	40.317946	-104.828330
	1600.00	3.20	24.44	1598.06	-26.80	64.54	29.33	0.00	1359383.14	3187293.92	40.317960	-104.828322
	1700.00	3.20	24.44	1697.91	-28.91	69.63	31.64	0.00	1359388.24	3187296.19	40.317974	-104.828314
	1800.00	3.20	24.44	1797.75	-31.02	74.71	33.95	0.00	1359393.34	3187298.46	40.317988	-104.828305
	1900.00	3.20	24.44	1897.59	-33.13	79.79	36.26	0.00	1359398.44	3187300.73	40.318002	-104.828297
	2000.00	3.20	24.44	1997.44	-35.24	84.87	38.57	0.00	1359403.53	3187303.00	40.318016	-104.828289
	2100.00	3.20	24.44	2097.28	-37.35	89.96	40.87	0.00	1359408.63	3187305.27	40.318030	-104.828280
	2200.00	3.20	24.44	2197.13	-39.46	95.04	43.18	0.00	1359413.73	3187307.54	40.318044	-104.828272
	2300.00	3.20	24.44	2296.97	-41.57	100.12	45.49	0.00	1359418.83	3187309.81	40.318058	-104.828264
	2400.00	3.20	24.44	2396.81	-43.68	105.20	47.80	0.00	1359423.93	3187312.08	40.318072	-104.828256
	2500.00	3.20	24.44	2496.66	-45.79	110.28	50.11	0.00	1359429.03	3187314.35	40.318086	-104.828247
	2600.00	3.20	24.44	2596.50	-47.90	115.37	52.42	0.00	1359434.13	3187316.62	40.318100	-104.828239
	2700.00	3.20	24.44	2696.35	-50.01	120.45	54.73	0.00	1359439.23	3187318.89	40.318114	-104.828231
	2800.00	3.20	24.44	2796.19	-52.12	125.53	57.04	0.00	1359444.33	3187321.16	40.318128	-104.828222
	2900.00	3.20	24.44	2896.03	-54.23	130.61	59.35	0.00	1359449.43	3187323.43	40.318142	-104.828214
	3000.00	3.20	24.44	2995.88	-56.34	135.70	61.66	0.00	1359454.53	3187325.70	40.318155	-104.828206
	3100.00	3.20	24.44	3095.72	-58.45	140.78	63.97	0.00	1359459.63	3187327.97	40.318169	-104.828198
	3200.00	3.20	24.44	3195.57	-60.56	145.86	66.28	0.00	1359464.73	3187330.25	40.318183	-104.828189
	3300.00	3.20	24.44	3295.41	-62.67	150.94	68.59	0.00	1359469.83	3187332.52	40.318197	-104.828181
	3400.00	3.20	24.44	3395.25	-64.78	156.02	70.90	0.00	1359474.92	3187334.79	40.318211	-104.828173
	3500.00	3.20	24.44	3495.10	-66.89	161.11	73.20	0.00	1359480.02	3187337.06	40.318225	-104.828164
	3600.00	3.20	24.44	3594.94	-69.00	166.19	75.51	0.00	1359485.12	3187339.33	40.318239	-104.828156
	3700.00	3.20	24.44	3694.79	-71.11	171.27	77.82	0.00	1359490.22	3187341.60	40.318253	-104.828148
	3800.00	3.20	24.44	3794.63	-73.22	176.35	80.13	0.00	1359495.32	3187343.87	40.318267	-104.828140
	3900.00	3.20	24.44	3894.47	-75.33	181.43	82.44	0.00	1359500.42	3187346.14	40.318281	-104.828131
	4000.00	3.20	24.44	3994.32	-77.44	186.52	84.75	0.00	1359505.52	3187348.41	40.318295	-104.828123
	4100.00	3.20	24.44	4094.16	-79.55	191.60	87.06	0.00	1359510.62	3187350.68	40.318309	-104.828115
	4200.00	3.20	24.44	4194.01	-81.66	196.68	89.37	0.00	1359515.72	3187352.95	40.318323	-104.828107
	4300.00	3.20	24.44	4293.85	-83.77	201.76	91.68	0.00	1359520.82	3187355.22	40.318337	-104.828098
	4400.00	3.20	24.44	4393.70	-85.88	206.85	93.99	0.00	1359525.92	3187357.49	40.318351	-104.828090
	4500.00	3.20	24.44	4493.54	-87.99	211.93	96.30	0.00	1359531.02	3187359.76	40.318365	-104.828082
	4600.00	3.20	24.44	4593.38	-90.10	217.01	98.61	0.00	1359536.12	3187362.03	40.318379	-104.828073
	4700.00	3.20	24.44	4693.23	-92.21	222.09	100.92	0.00	1359541.22	3187364.30	40.318393	-104.828065
	4800.00	3.20	24.44	4793.07	-94.32	227.17	103.22	0.00	1359546.31	3187366.57	40.318407	-104.828057
	4900.00	3.20	24.44	4892.92	-96.43	232.26	105.53	0.00	1359551.41	3187368.85	40.318421	-104.828049
	5000.00	3.20	24.44	4992.76	-98.54	237.34	107.84	0.00	1359556.51	3187371.12	40.318434	-104.828040
	5100.00	3.20	24.44	5092.60	-100.65	242.42	110.15	0.00	1359561.61	3187373.39	40.318448	-104.828032
	5200.00	3.20	24.44	5192.45	-102.76	247.50	112.46	0.00	1359566.71	3187375.66	40.318462	-104.828024
	5300.00	3.20	24.44	5292.29	-104.87	252.59	114.77	0.00	1359571.81	3187377.93	40.318476	-104.828015
	5400.00	3.20	24.44	5392.14	-106.98	257.67	117.08	0.00	1359576.91	3187380.20	40.318490	-104.828007
	5500.00	3.20	24.44	5491.98	-109.09	262.75	119.39	0.00	1359582.01	3187382.47	40.318504	-104.827999
	5600.00	3.20	24.44	5591.82	-111.20	267.83	121.70	0.00	1359587.11	3187384.74	40.318518	-104.827991
	5700.00	3.20	24.44	5691.67	-113.32	272.91	124.01	0.00	1359592.21	3187387.01	40.318532	-104.827982
	5800.00	3.20	24.44	5791.51	-115.43	278.00	126.32	0.00	1359597.31	3187389.28	40.318546	-104.827974
	5900.00	3.20	24.44	5891.36	-117.54	283.08	128.63	0.00	1359602.41	3187391.55	40.318560	-104.827966
	6000.00	3.20	24.44	5991.20	-119.65	288.16	130.94	0.00	1359607.51	3187393.82	40.318574	-104.827957
	6100.00	3.20	24.44	6091.04	-121.76	293.24	133.25	0.00	1359612.61	3187396.09	40.318588	-104.827949
	6200.00	3.20	24.44	6190.89	-123.87	298.32	135.55	0.00	1359617.70	3187398.36	40.318602	-104.827941
	6300.00	3.20	24.44	6290.73	-125.98	303.41	137.86	0.00	1359622.80	3187400.63	40.318616	-104.827933
	6400.00	3.20	24.44	6390.58	-128.09	308.49	140.17	0.00	1359627.90	3187402.90	40.318630	-104.827924
	6500.00	3.20	24.44	6490.42	-130.20	313.57	142.48	0.00	1359633.00	3187405.18	40.318644	-104.827916
KOP, Build/Turn 9 DLS	6577.54	3.20	24.44	6567.84	-131.83	317.51	144.27	0.00	1359636.96	3187406.94	40.318655	-104.827910
	6600.00	3.00	346.56	6590.27	-131.91	318.66	144.40	9.00	1359638.10	3187407.05	40.318658	-104.827909
	6700.00	10.14	286.81	6689.62	-122.67	323.76	135.35	9.00	1359643.14	3187397.96	40.318672	-104.827942
	6800.00	18.93	278.79	6786.34	-97.99	328.79	110.84	9.00	1359647.99	3187373.42	40.318686	-104.828030
	6900.00	27.85	275.78	6878.03	-58.48	333.63	71.49	9.00	1359652.53	3187334.04	40.318699	-104.828171
	7000.00	36.81	274.15	6962.45	-5.12	338.16	18.26	9.00	1359656.65	3187280.78	40.318711	-104.828362
	7100.00	45.78	273.08	7037.50	60.79	342.26	-47.54	9.00	1359660.25	3187214.95	40.318722	-104.8

	MD (ft)	Incl (°)	Azim True (°)	TVD (ft)	VSEC (ft)	NS (ft)	EW (ft)	DLS (°/100ft)	Northing (ftUS)	Easting (ftUS)	Latitude (°)	Longitude (°)
Bernhardt 5-01C-14-L TOP	7200.00	54.76	272.30	7101.35	137.62	345.84	-124.28	9.00	1359663.25	3187138.19	40.318732	-104.828873
	7300.00	63.75	271.68	7152.42	223.48	348.80	-210.09	9.00	1359665.56	3187052.36	40.318740	-104.829180
	7400.00	72.73	271.15	7189.45	316.25	351.08	-302.84	9.00	1359667.13	3186959.60	40.318747	-104.829513
	7500.00	81.72	270.66	7211.54	413.64	352.61	-400.25	9.00	1359667.93	3186862.19	40.318751	-104.829862
	7600.00	90.71	270.20	7218.13	513.27	353.36	-499.93	9.00	1359667.92	3186762.51	40.318753	-104.830220
	7607.31	91.37	270.17	7218.00	520.58	353.38	-507.24	9.00	1359667.89	3186755.20	40.318753	-104.830246
	7700.00	91.35	270.17	7215.80	613.18	353.66	-599.90	0.01	1359667.47	3186662.54	40.318754	-104.830578
	7800.00	91.34	270.18	7213.45	713.09	353.96	-699.87	0.01	1359667.01	3186562.58	40.318755	-104.830937
	7900.00	91.33	270.18	7211.12	813.00	354.27	-799.84	0.01	1359666.56	3186462.61	40.318755	-104.831295
	8000.00	91.31	270.18	7208.82	912.91	354.58	-899.82	0.01	1359666.12	3186362.64	40.318756	-104.831654
	8100.00	91.30	270.18	7206.54	1012.82	354.90	-999.79	0.01	1359665.68	3186262.67	40.318757	-104.832012
	8200.00	91.29	270.19	7204.28	1112.73	355.23	-1099.77	0.01	1359665.25	3186162.70	40.318758	-104.832371
	8300.00	91.27	270.19	7202.05	1212.64	355.56	-1199.74	0.01	1359664.82	3186062.73	40.318759	-104.832729
	8400.00	91.26	270.19	7199.84	1312.56	355.90	-1299.71	0.01	1359664.40	3185962.76	40.318760	-104.833088
	8500.00	91.24	270.20	7197.66	1412.47	356.24	-1399.69	0.01	1359663.99	3185862.79	40.318761	-104.833446
	8600.00	91.23	270.20	7195.50	1512.38	356.59	-1499.67	0.01	1359663.58	3185762.82	40.318762	-104.833805
	8700.00	91.22	270.20	7193.36	1612.30	356.94	-1599.64	0.01	1359663.17	3185662.85	40.318763	-104.834163
	8800.00	91.20	270.21	7191.25	1712.21	357.30	-1699.62	0.01	1359662.77	3185562.88	40.318764	-104.834522
	8900.00	91.19	270.21	7189.16	1812.13	357.66	-1799.60	0.01	1359662.38	3185462.90	40.318765	-104.834880
	9000.00	91.18	270.21	7187.10	1912.05	358.03	-1899.58	0.01	1359661.99	3185362.93	40.318766	-104.835239
	9100.00	91.16	270.22	7185.06	2011.97	358.41	-1999.55	0.01	1359661.61	3185262.96	40.318767	-104.835598
	9200.00	91.15	270.22	7183.04	2111.88	358.79	-2099.53	0.01	1359661.24	3185162.98	40.318768	-104.835956
	9300.00	91.13	270.22	7181.05	2211.80	359.17	-2199.51	0.01	1359660.87	3185063.01	40.318769	-104.836315
	9400.00	91.12	270.23	7179.08	2311.72	359.57	-2299.49	0.01	1359660.50	3184963.03	40.318770	-104.836673
	9500.00	91.11	270.23	7177.14	2411.64	359.96	-2399.47	0.01	1359660.14	3184863.06	40.318771	-104.837032
	9600.00	91.09	270.23	7175.22	2511.56	360.37	-2499.45	0.01	1359659.79	3184763.08	40.318772	-104.837390
	9700.00	91.08	270.24	7173.32	2611.49	360.78	-2599.43	0.01	1359659.44	3184663.10	40.318773	-104.837749
	9800.00	91.07	270.24	7171.45	2711.41	361.19	-2699.42	0.01	1359659.10	3184563.12	40.318774	-104.838107
	9900.00	91.05	270.24	7169.60	2811.33	361.61	-2799.40	0.01	1359658.76	3184463.15	40.318775	-104.838466
	10000.00	91.04	270.25	7167.77	2911.25	362.04	-2899.38	0.01	1359658.43	3184363.17	40.318776	-104.838824
	10100.00	91.03	270.25	7165.97	3011.18	362.47	-2999.36	0.01	1359658.10	3184263.19	40.318777	-104.839183
	10200.00	91.01	270.25	7164.19	3111.10	362.90	-3099.35	0.01	1359657.78	3184163.21	40.318779	-104.839541
	10300.00	91.00	270.26	7162.44	3211.03	363.35	-3199.33	0.01	1359657.47	3184063.23	40.318780	-104.839900
	10400.00	90.98	270.26	7160.71	3310.95	363.79	-3299.31	0.01	1359657.16	3183963.25	40.318781	-104.840259
	10500.00	90.97	270.26	7159.01	3410.88	364.25	-3399.30	0.01	1359656.85	3183863.27	40.318782	-104.840617
	10600.00	90.96	270.26	7157.32	3510.81	364.71	-3499.28	0.01	1359656.55	3183763.29	40.318783	-104.840976
	10700.00	90.94	270.27	7155.67	3610.74	365.17	-3599.27	0.01	1359656.26	3183663.31	40.318785	-104.841334
	10800.00	90.93	270.27	7154.03	3710.66	365.64	-3699.25	0.01	1359655.97	3183563.33	40.318786	-104.841693
	10900.00	90.92	270.27	7152.42	3810.59	366.12	-3799.24	0.01	1359655.69	3183463.34	40.318787	-104.842051
	11000.00	90.90	270.28	7150.84	3910.52	366.60	-3899.23	0.01	1359655.42	3183363.36	40.318788	-104.842410
	11100.00	90.89	270.28	7149.27	4010.45	367.08	-3999.21	0.01	1359655.15	3183263.38	40.318790	-104.842768
	11200.00	90.87	270.28	7147.74	4110.38	367.58	-4099.20	0.01	1359654.88	3183163.39	40.318791	-104.843127
	11300.00	90.86	270.29	7146.22	4210.31	368.08	-4199.19	0.01	1359654.62	3183063.41	40.318792	-104.843486
	11400.00	90.85	270.29	7144.73	4310.25	368.58	-4299.17	0.01	1359654.37	3182963.43	40.318794	-104.843844
	11500.00	90.83	270.29	7143.26	4410.18	369.09	-4399.16	0.01	1359654.12	3182863.44	40.318795	-104.844203
	11600.00	90.82	270.30	7141.82	4510.11	369.60	-4499.15	0.01	1359653.88	3182763.46	40.318796	-104.844561
	11700.00	90.81	270.30	7140.40	4610.04	370.12	-4599.14	0.01	1359653.64	3182663.47	40.318798	-104.844920
11800.00	90.79	270.30	7139.01	4709.98	370.65	-4699.13	0.01	1359653.41	3182563.49	40.318799	-104.845278	
11900.00	90.78	270.31	7137.64	4809.91	371.18	-4799.12	0.01	1359653.19	3182463.50	40.318801	-104.845637	
12000.00	90.77	270.31	7136.29	4909.85	371.72	-4899.11	0.01	1359652.97	3182363.51	40.318802	-104.845996	
12100.00	90.75	270.31	7134.97	5009.78	372.26	-4999.10	0.01	1359652.75	3182263.53	40.318803	-104.846354	
12200.00	90.74	270.32	7133.67	5109.72	372.81	-5099.09	0.01	1359652.54	3182163.54	40.318805	-104.846713	
12300.00	90.72	270.32	7132.39	5209.66	373.36	-5199.08	0.01	1359652.34	3182063.55	40.318806	-104.847071	
12400.00	90.71	270.32	7131.14	5309.59	373.92	-5299.07	0.01	1359652.14	3181963.57	40.318808	-104.847430	
12500.00	90.70	270.33	7129.91	5409.53	374.49	-5399.06	0.01	1359651.95	3181863.58	40.318809	-104.847788	
12600.00	90.68	270.33	7128.71	5509.47	375.06	-5499.05	0.01	1359651.76	3181763.59	40.318811	-104.848147	
12700.00	90.67	270.33	7127.53	5609.41	375.63	-5599.04	0.01	1359651.58	3181663.60	40.318812	-104.848506	
12800.00	90.66	270.33	7126.37	5709.34	376.22	-5699.03	0.01	1359651.40	3181563.61	40.318814	-104.848864	
12900.00	90.64	270.34	7125.24	5809.28	376.80	-5799.02	0.01	1359651.23	3181463.62	40.318815	-104.849223	
13000.00	90.63	270.34	7124.13	5909.22	377.40	-5899.02	0.01	1359651.07	3181363.63	40.318817	-104.849581	
13100.00	90.61	270.34	7123.05	6009.16	377.99	-5999.01	0.01	1359650.91	3181263.65	40.318819	-104.849940	
13200.00	90.60	270.35	7121.99	6109.10	378.60	-6099.00	0.01	1359650.76	3181163.66	40.318820	-104.850298	
13300.00	90.59	270.35	7120.95	6209.05	379.21	-6199.99	0.01	1359650.61	3181063.67	40.318822	-104.850657	
13400.00	90.57	270.35	7119.94	6308.99	379.82	-6299.98	0.01	1359650.47	3180963.67	40.318823	-104.851016	
13500.00	90.56	270.36	7118.95	6408.93	380.44	-6399.98	0.01	1359650.33	3180863.68	40.318825	-104.851374	
13600.00	90.55	270.36	7117.99	6508.87	381.07	-6499.97	0.01	1359650.20	3180763.69	40.318827	-104.851733	
13700.00	90.53	270.36	7117.05	66								

Comments	MD (ft)	Incl (°)	Azim True (°)	TVD (ft)	VSEC (ft)	NS (ft)	EW (ft)	DLS (°/100ft)	Northing (ftUS)	Easting (ftUS)	Latitude (°)	Longitude (°)
Bernhardt 5-01C-14-L BHL	17685.20	90.00	270.48	7099.00	10591.99	411.42	-10584.00	0.01	1359649.61	3176678.74	40.318906	-104.866382

Survey Type: Def Plan

Survey Error Model: ISCWSA Rev 0 *** 3-D 95.000% Confidence 2.7955 sigma
Survey Program:

Description	Part	MD From (ft)	MD To (ft)	EOU Freq (ft)	Hole Size	Casing Diameter (in)	Expected Max Inclination (deg)	Survey Tool Type	Borehole / Survey
	1	0.000	4.000	1/100.000	13.500	9.625		NAL_MWD_IFR1-Depth Only	Original Hole / Bernhardt 5-01C-14-L R0 mdv 17Sept19
	1	4.000	1800.000	1/100.000	13.500	9.625		NAL_MWD_IFR1	Original Hole / Bernhardt 5-01C-14-L R0 mdv 17Sept19
	1	1800.000	17685.200	1/100.000	8.500	5.500		NAL_MWD_IFR1+MS	Original Hole / Bernhardt 5-01C-14-L R0 mdv 17Sept19