



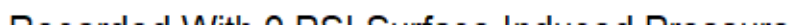
Downloaded from <http://ajph.org/> on November 10, 2015

All interpretations are opinions based on inferences from electrical or other measurements and we cannot and do not guarantee the accuracy or correctness of any interpretation, and we shall not, except in the case of gross or willful negligence on our part, be liable or responsible for any loss, costs, damages, or expenses incurred or sustained by anyone resulting from any interpretation made by any of our officers, agents or employees. These interpretations are also subject to our general terms and conditions set out in our current Price Schedule.

Log ran as per customer request
Depth referenced to Kelly Bushing at 13 FT
Adjusted 0 FT to correlate with Kelly Bushing
Log ran with 0 PSI Surface Induced Pressure
Logging tools were clean and free of debris upon completion of operations

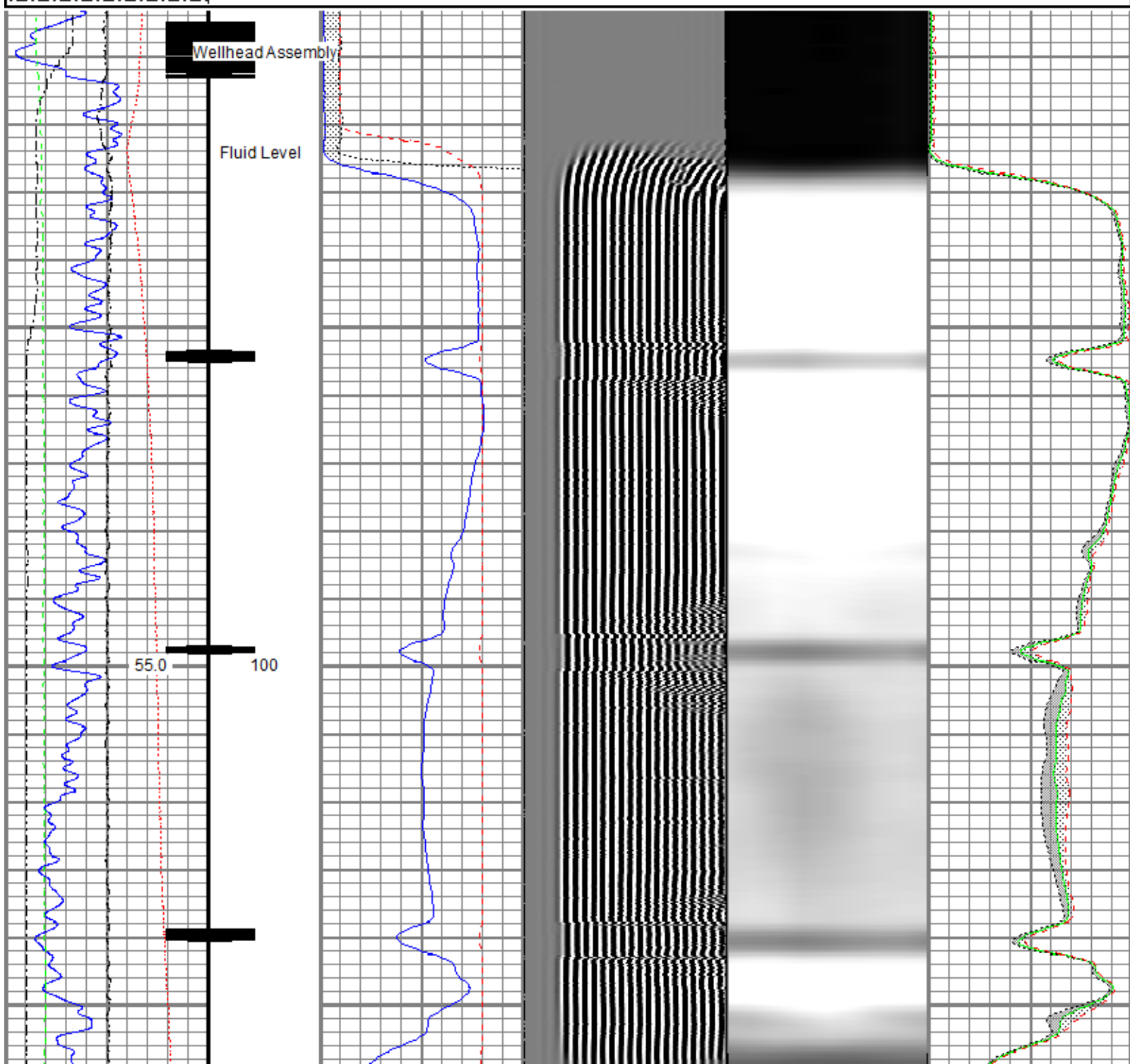
Thank you for choosing Reliance Oilfield Services, LLC!!

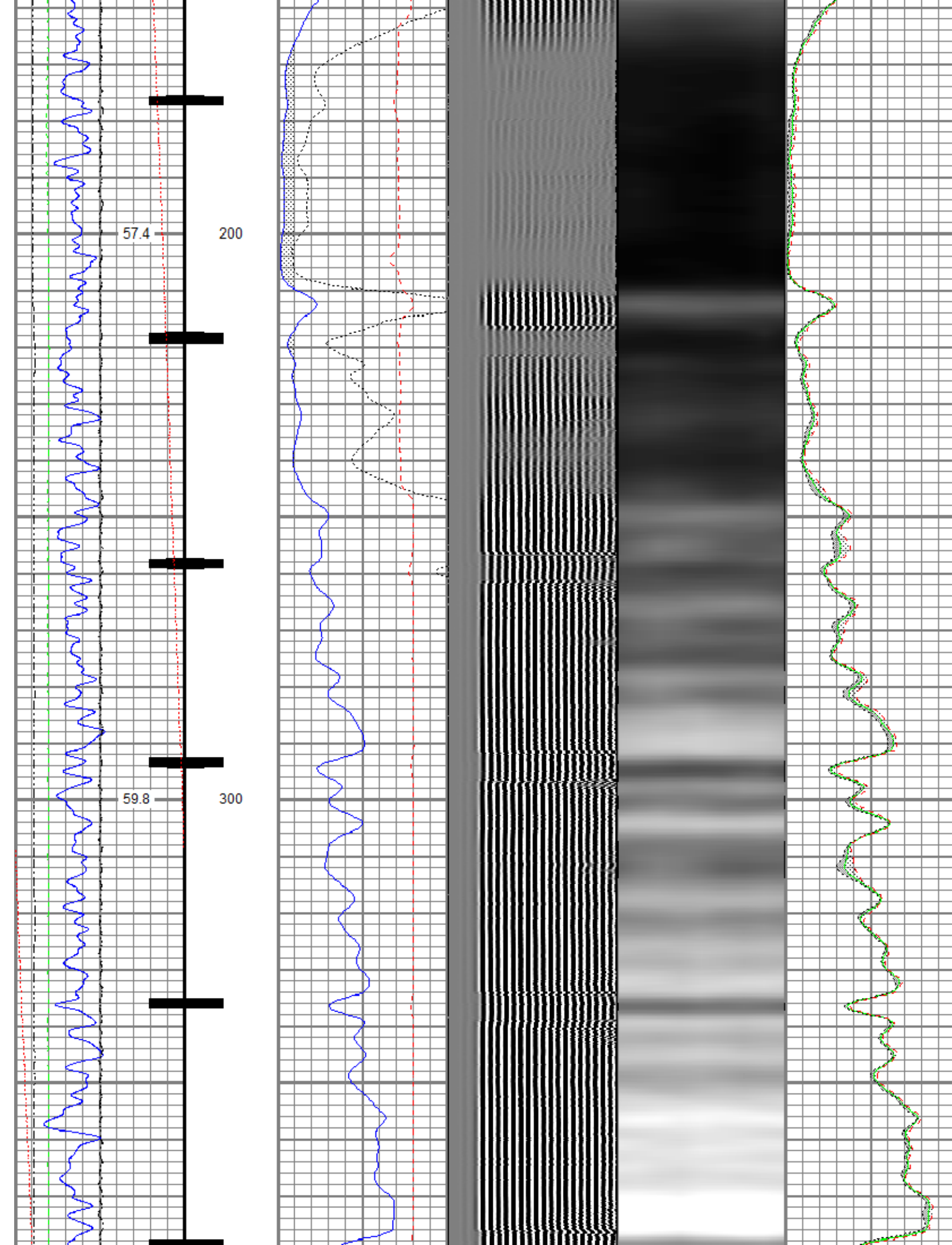
Main Pass

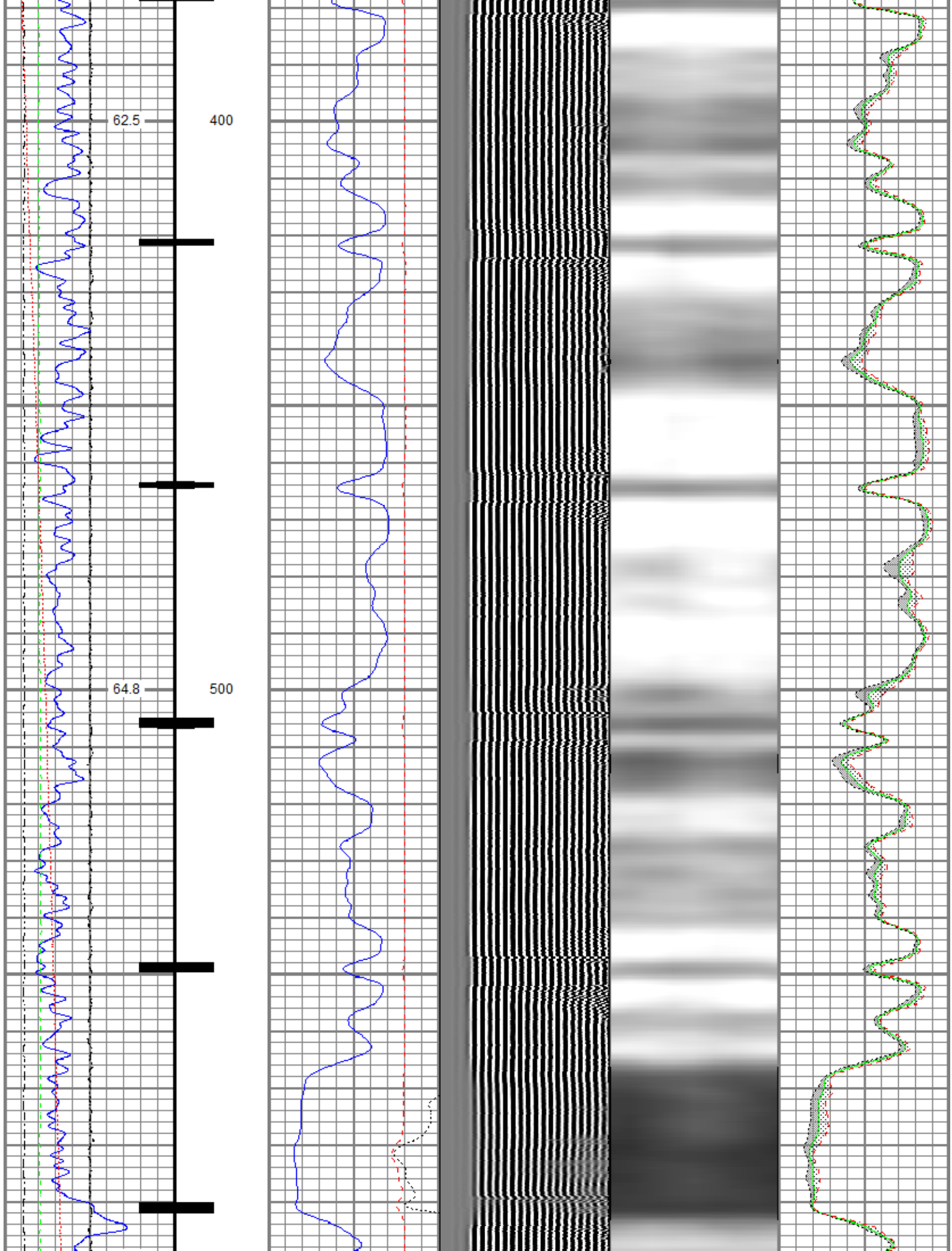


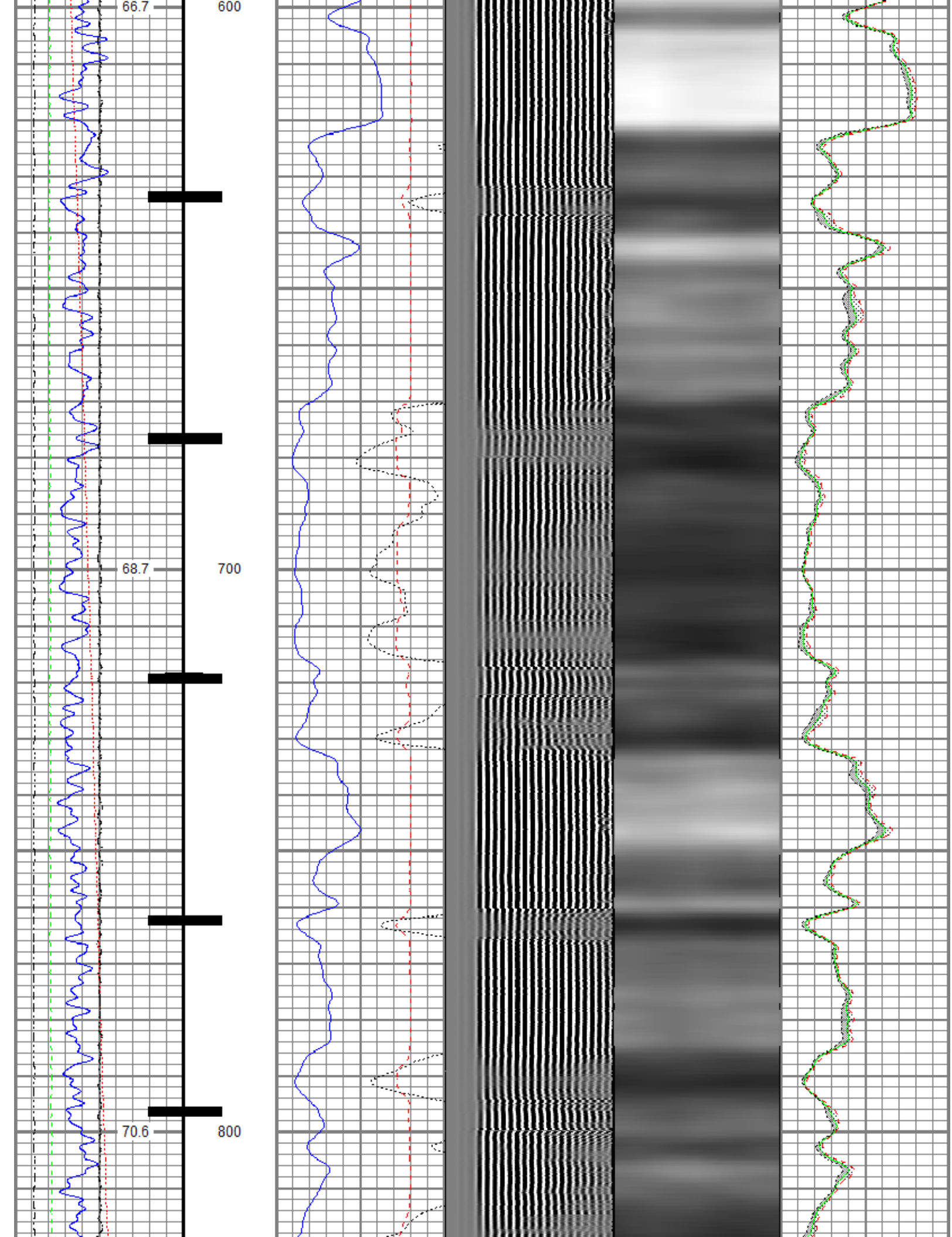
Database File	anadarko\0512331098_anadarko_cannon w15-18d_rbl_02-26-19\0512331098_anadarko_cannon w15-18d_rbl_02-26-19.db
Dataset Pathname	RCBL/main_pass.1
Presentation Format	ros_radri
Dataset Creation	Tue Feb 26 17:05:22 2019
Charted by	Depth in Feet scaled 1:240

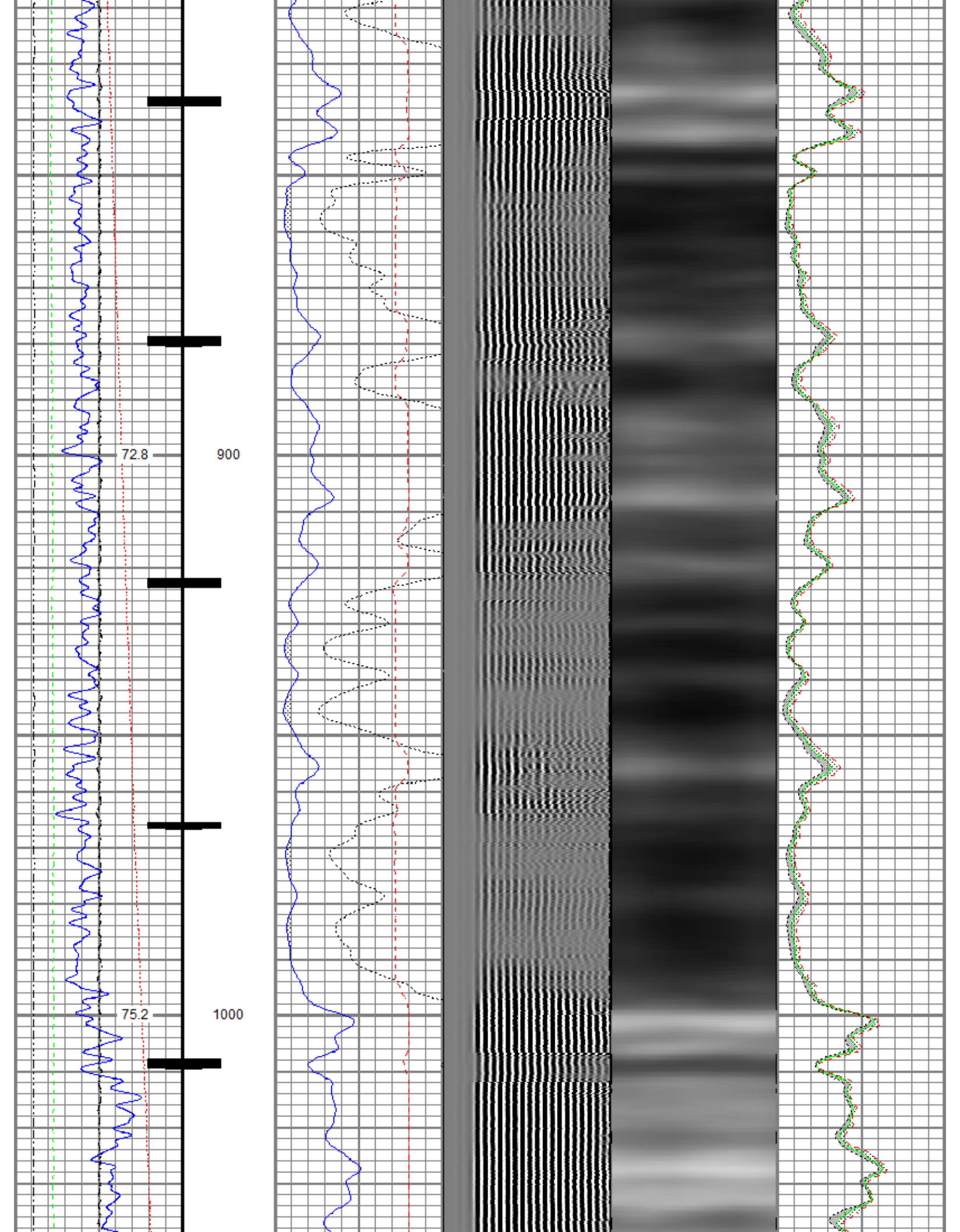
Gamma Ray	0	3' Amplitude (mV)	100	5' Variable Density Log	Sector Map	0	Average Amplitude	100
(GAPI)	120	3' Amplitude x 5	200	1200			Minimum Amplitude	
Casing Collar Locator		(mV)	20					
0 Temperature (degF)	20	3' Travel Time					Maximum Amplitude	
Line Speed		650 (usec)	150					100
-150 (ft/min)	150							
0 Line Tension (lb)	2000							
Differential Temperature								
-2 (degF)	2							

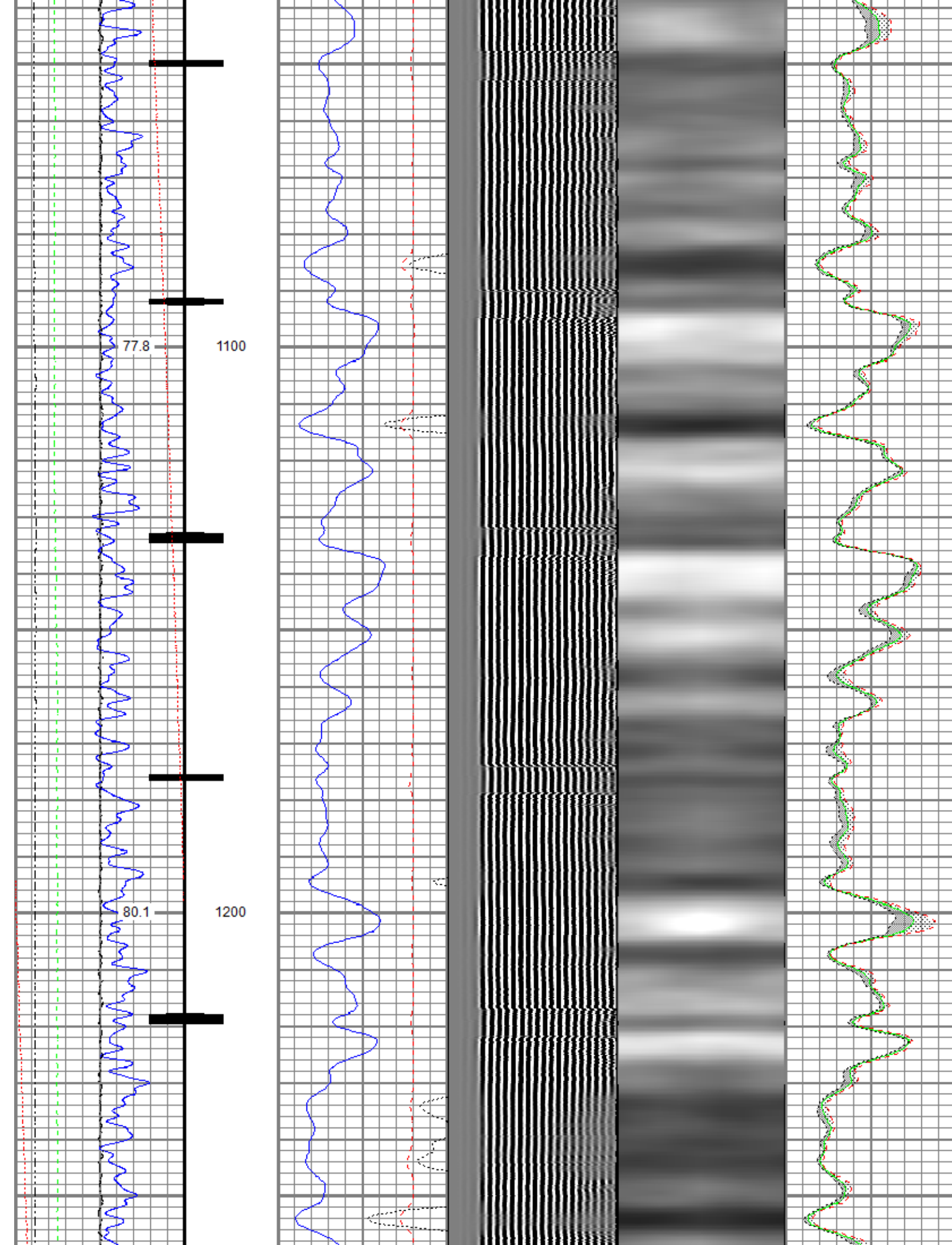


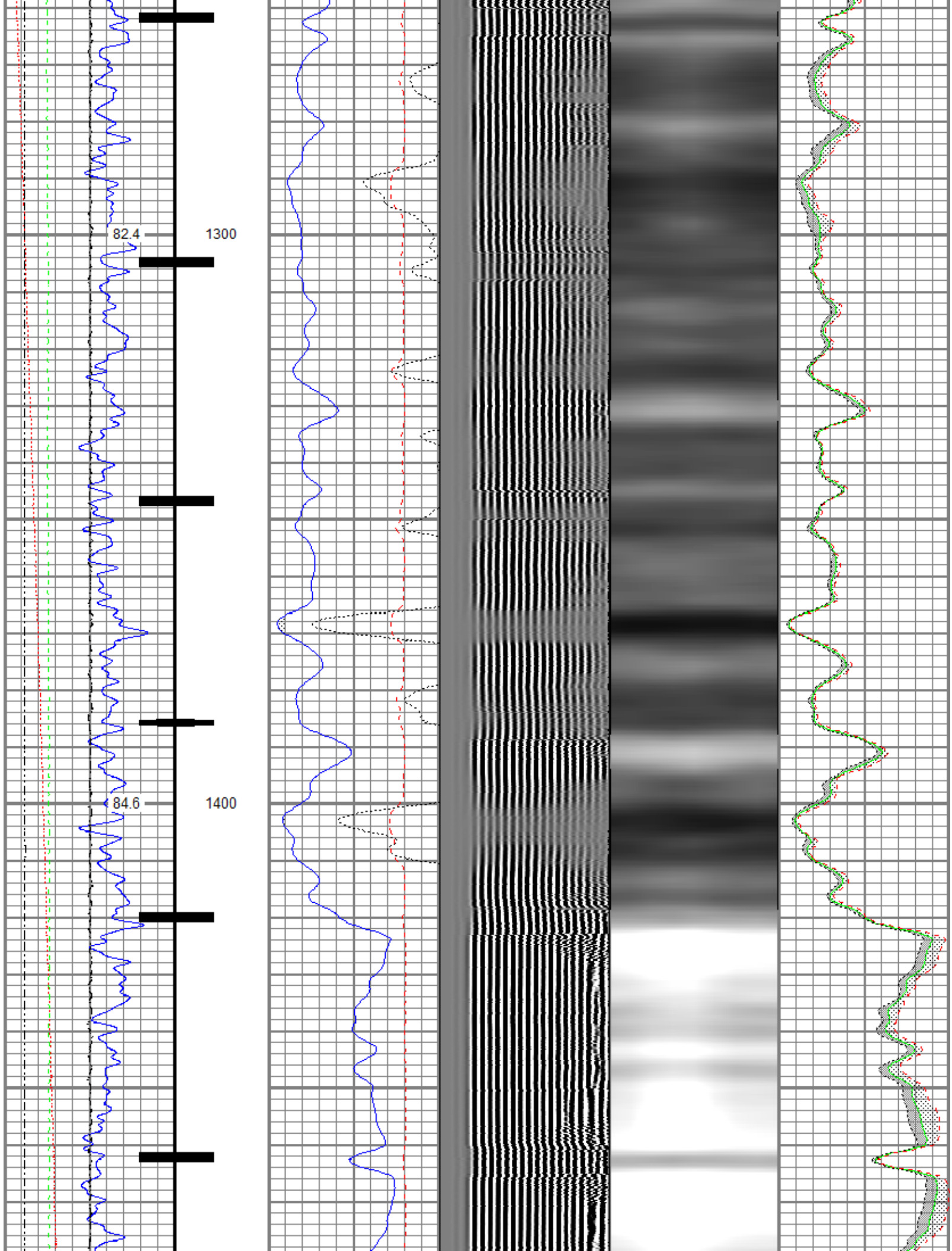


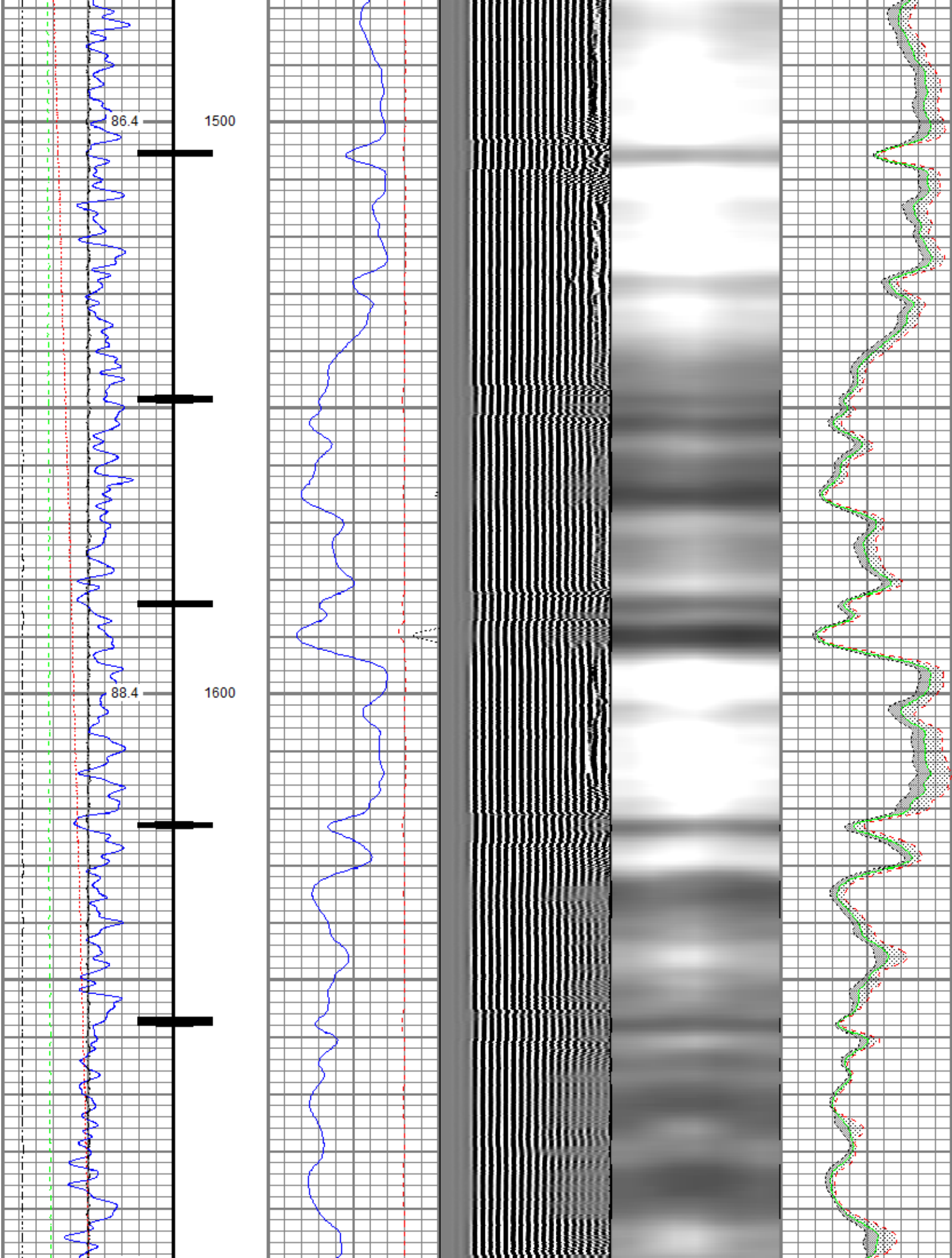


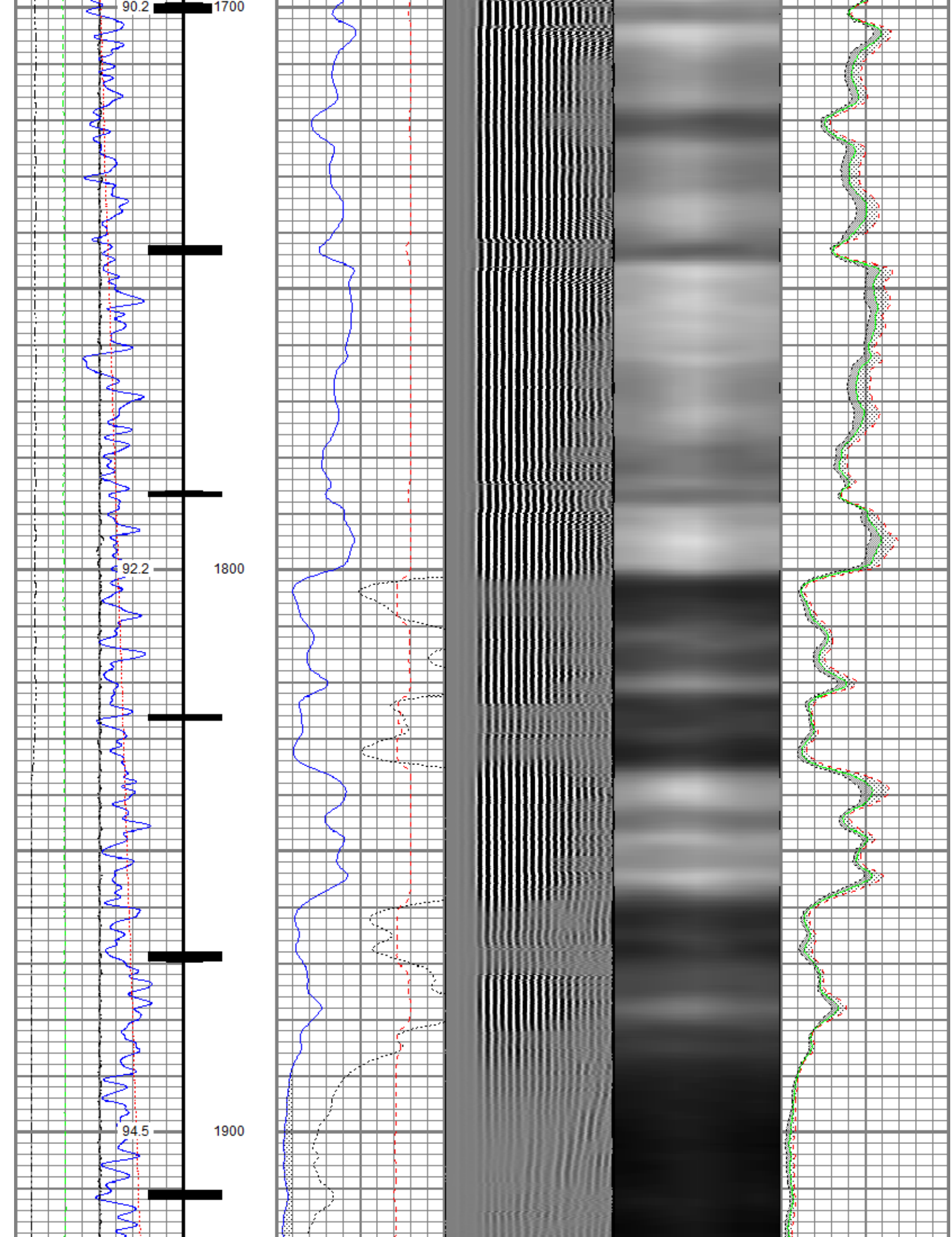


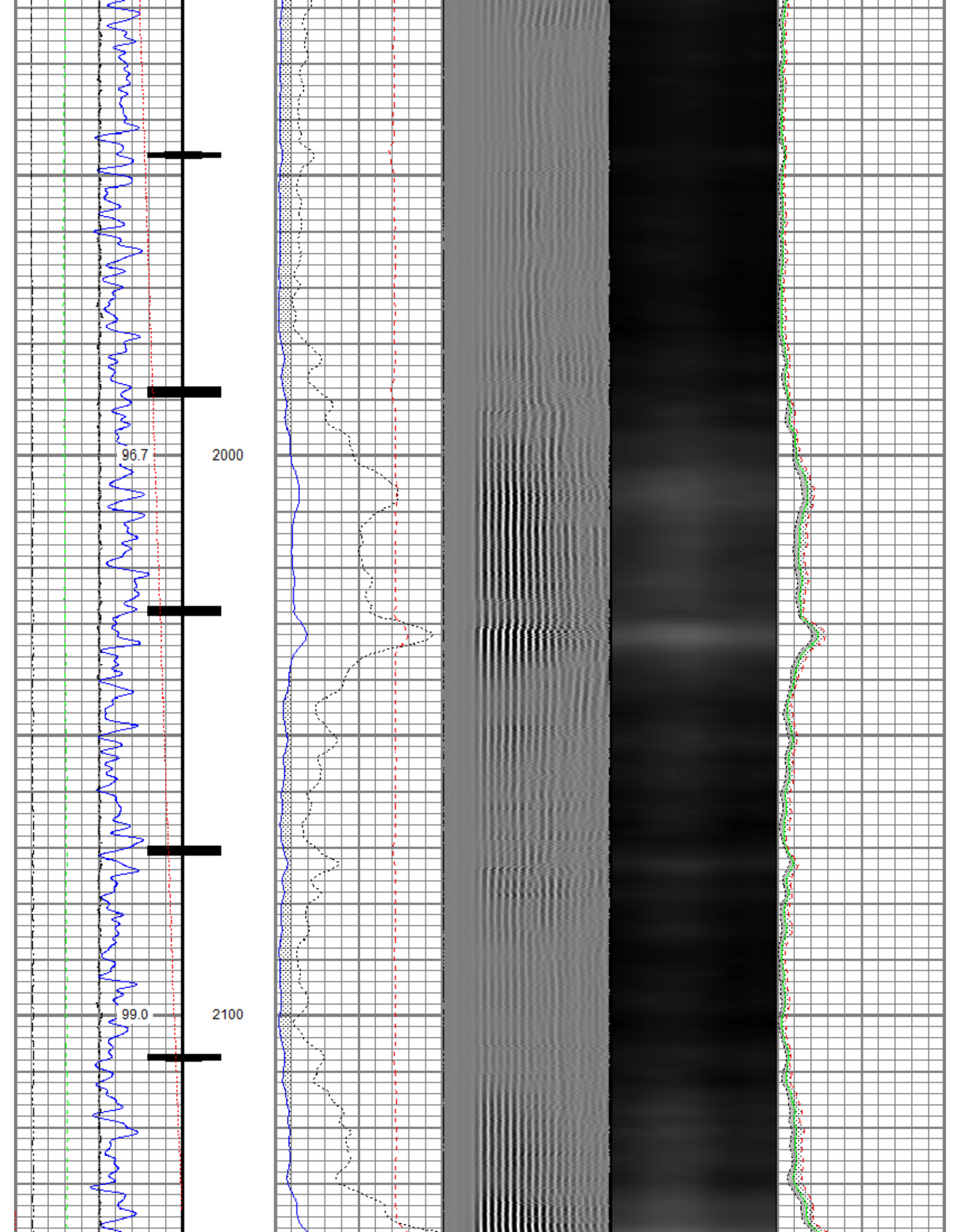


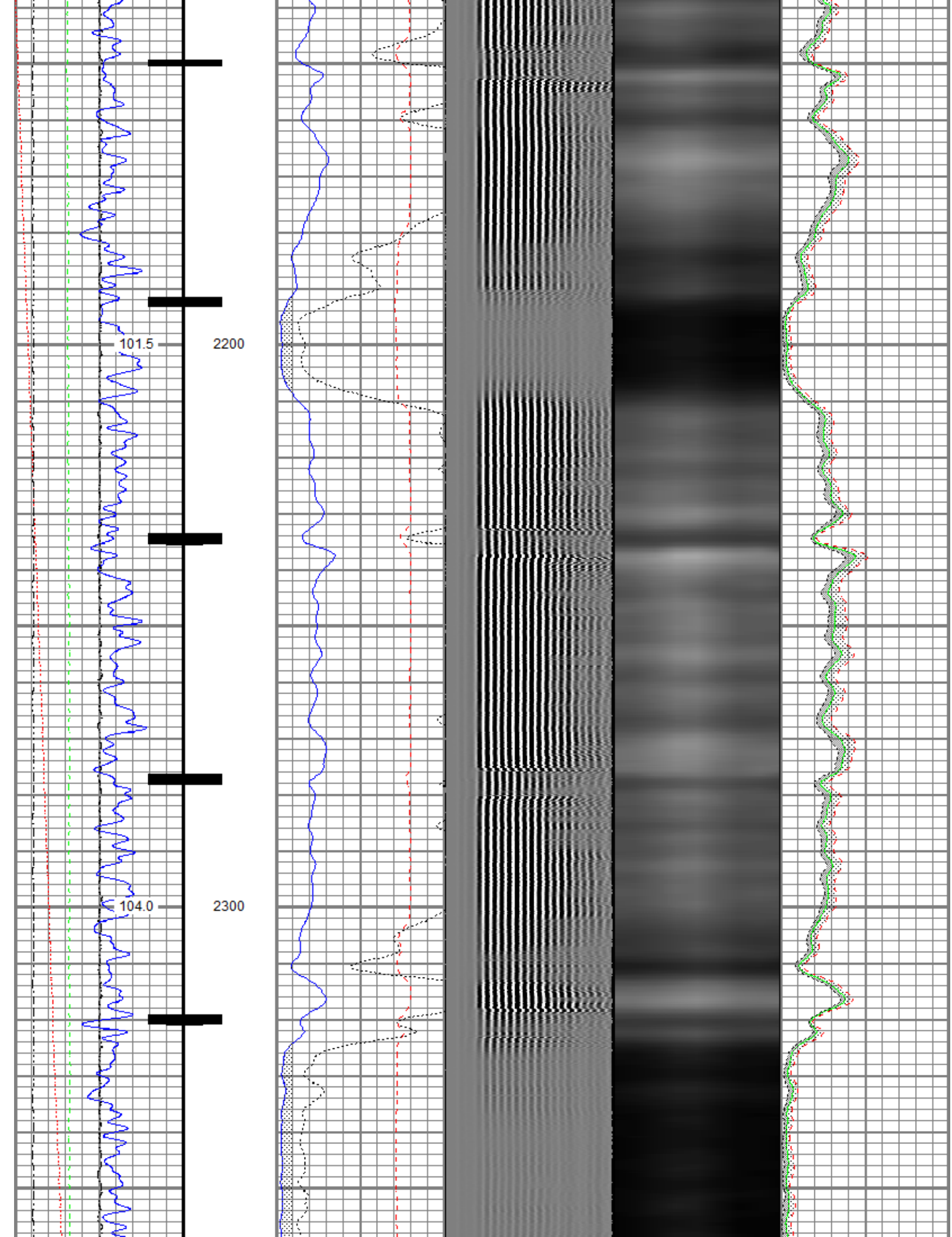


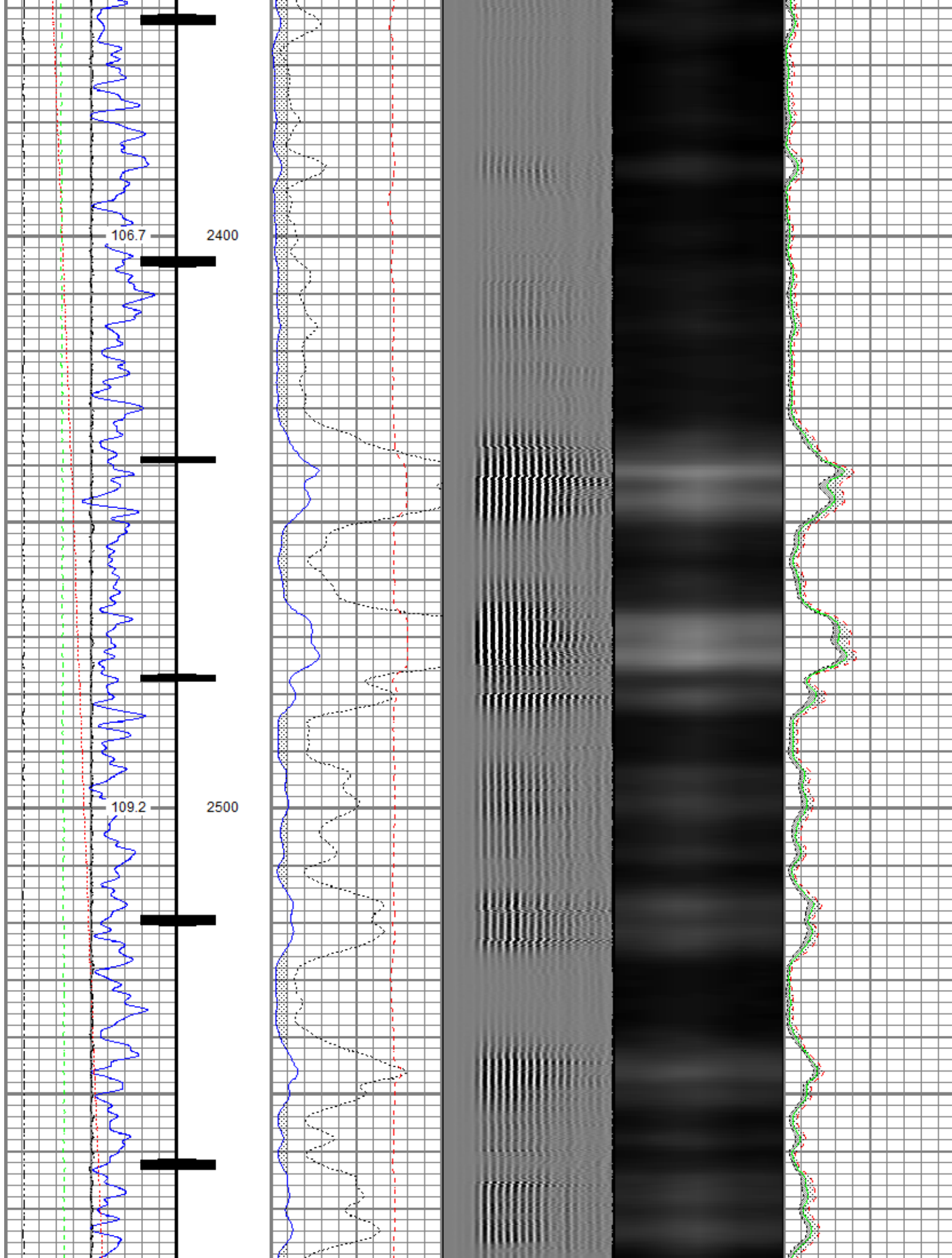


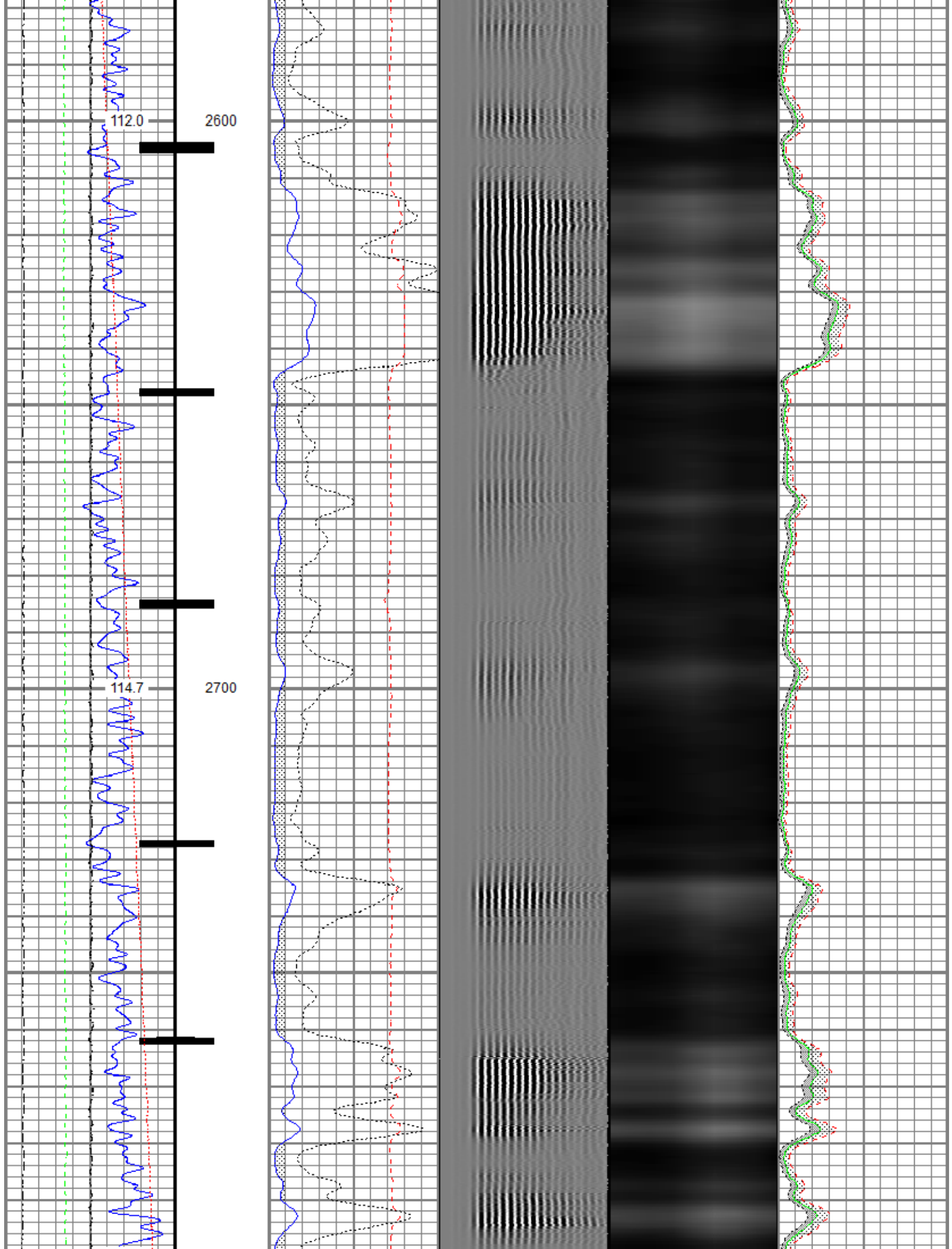


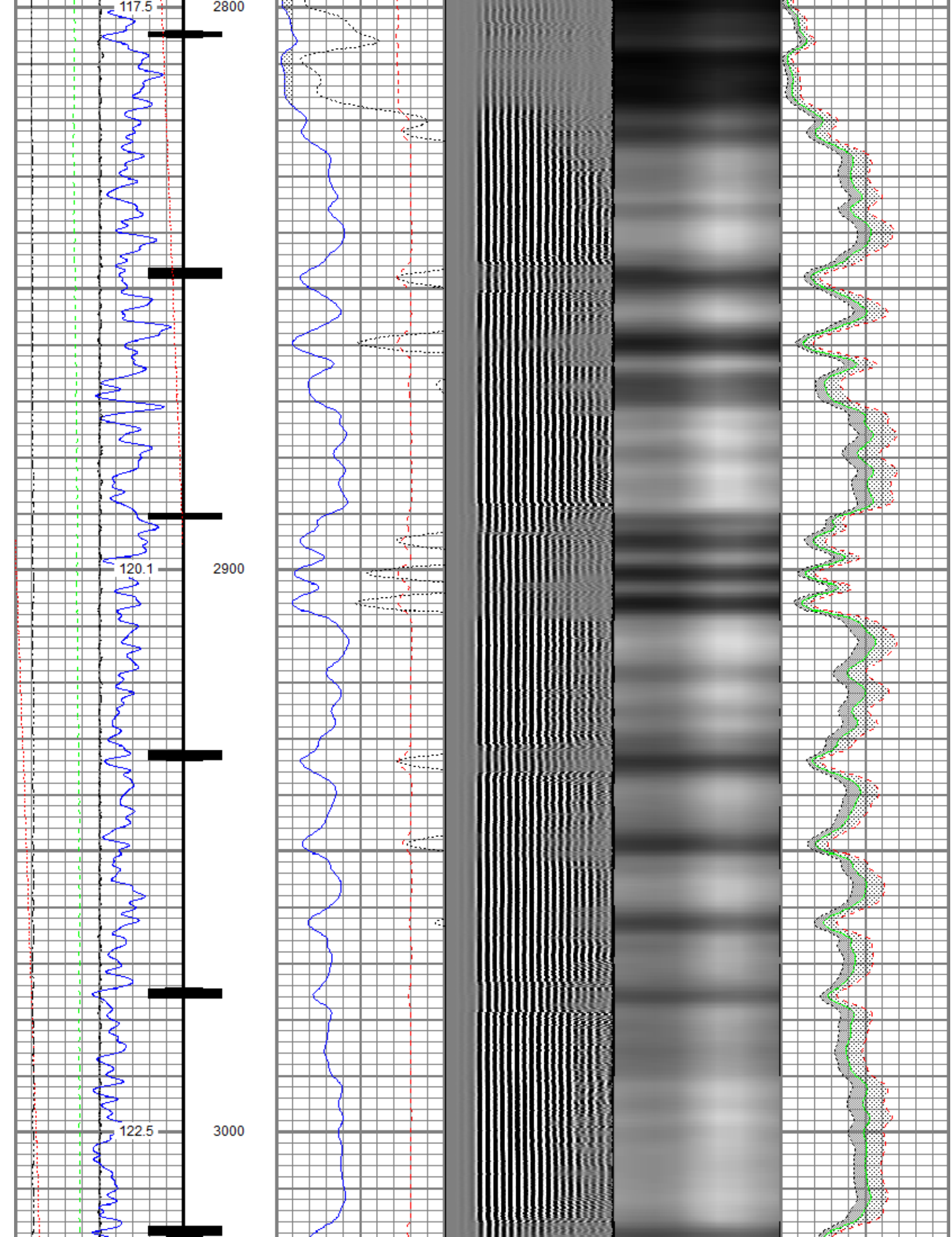


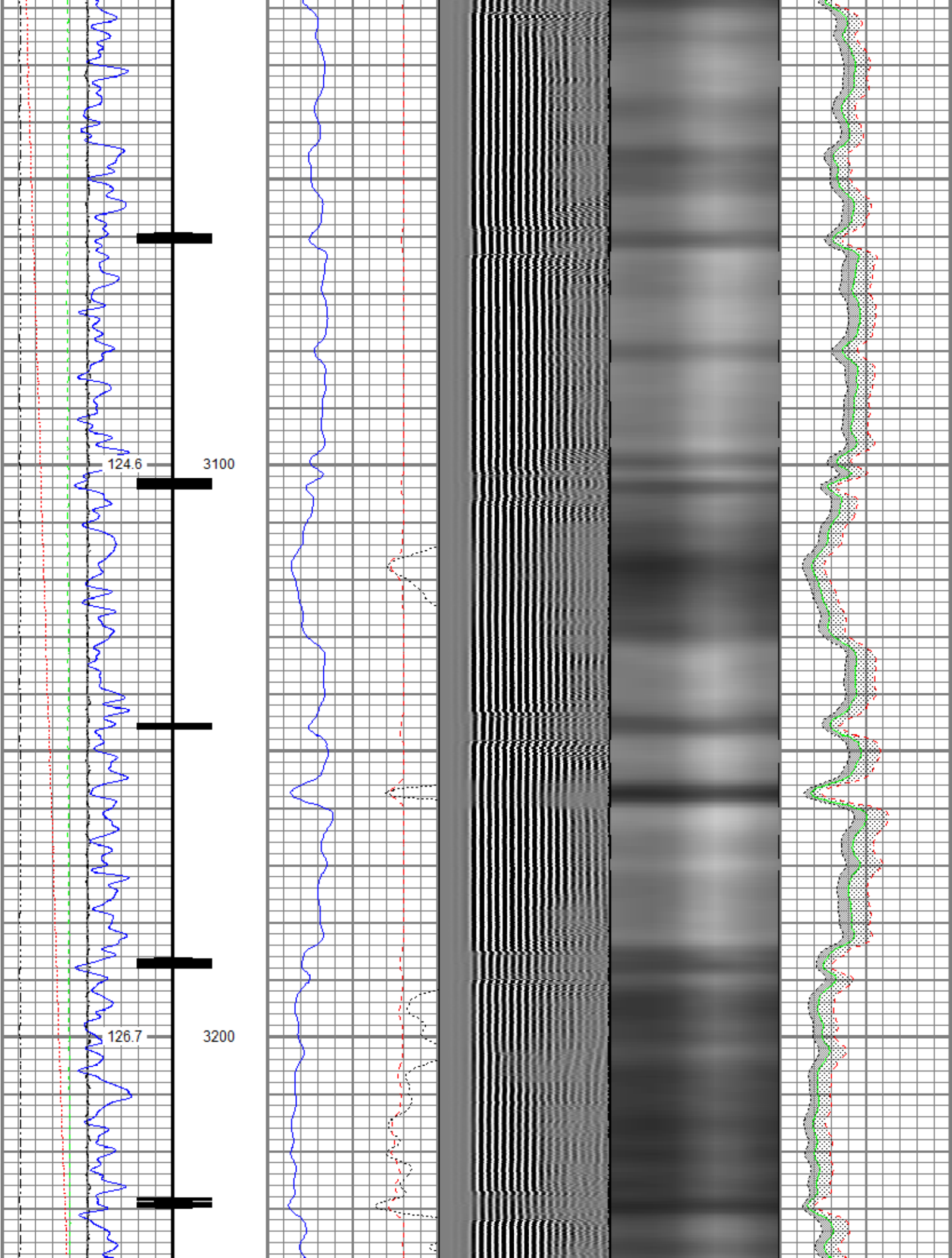


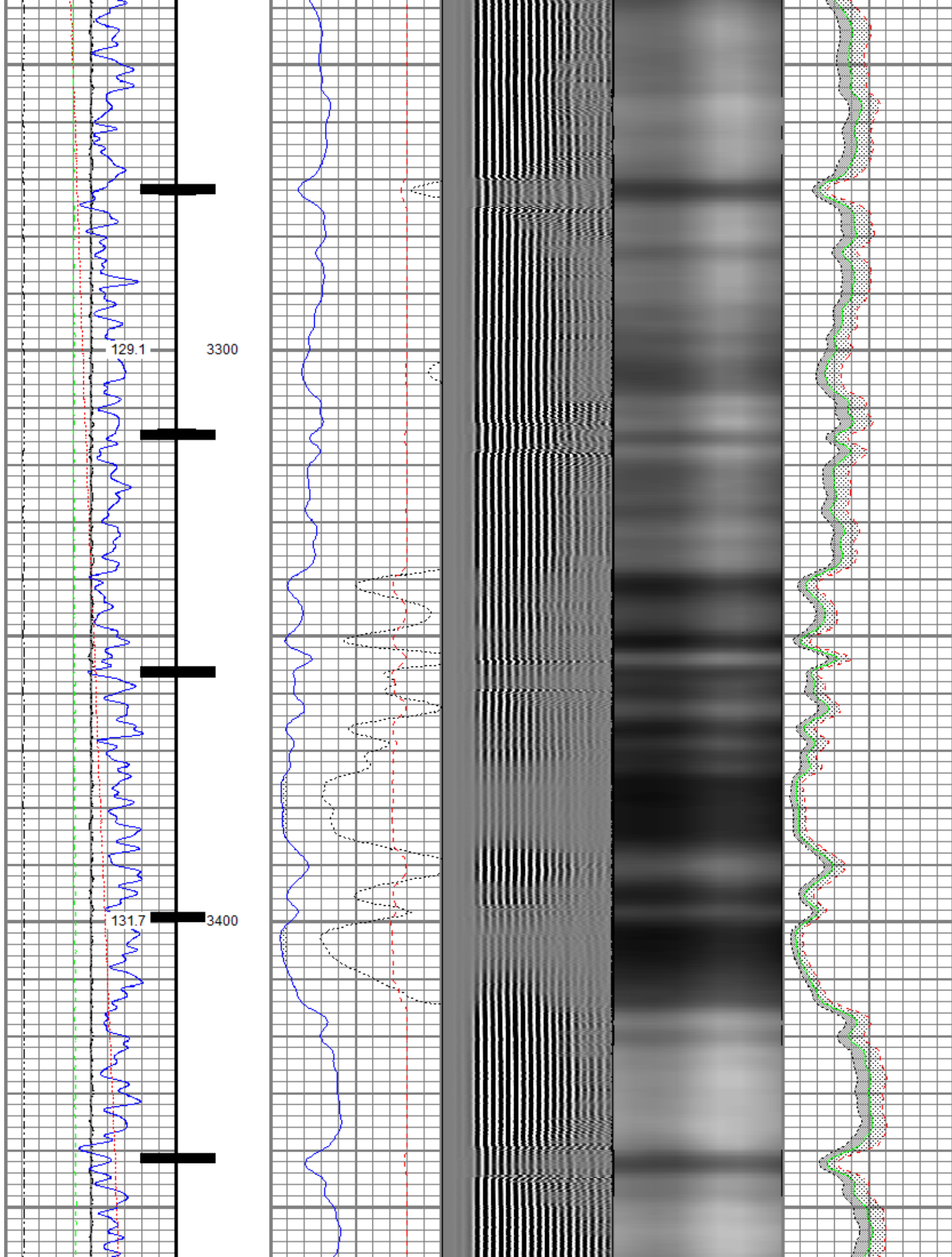


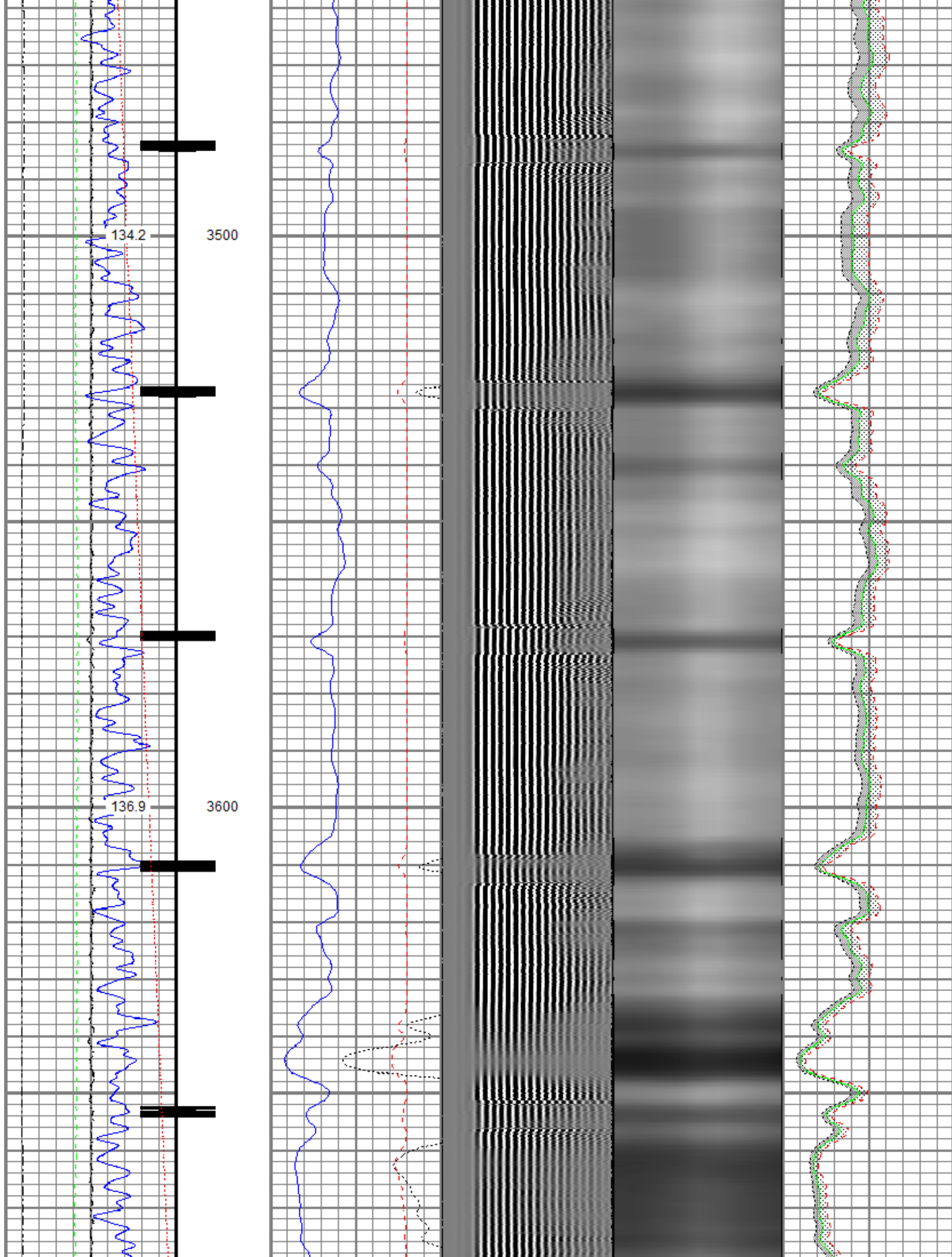


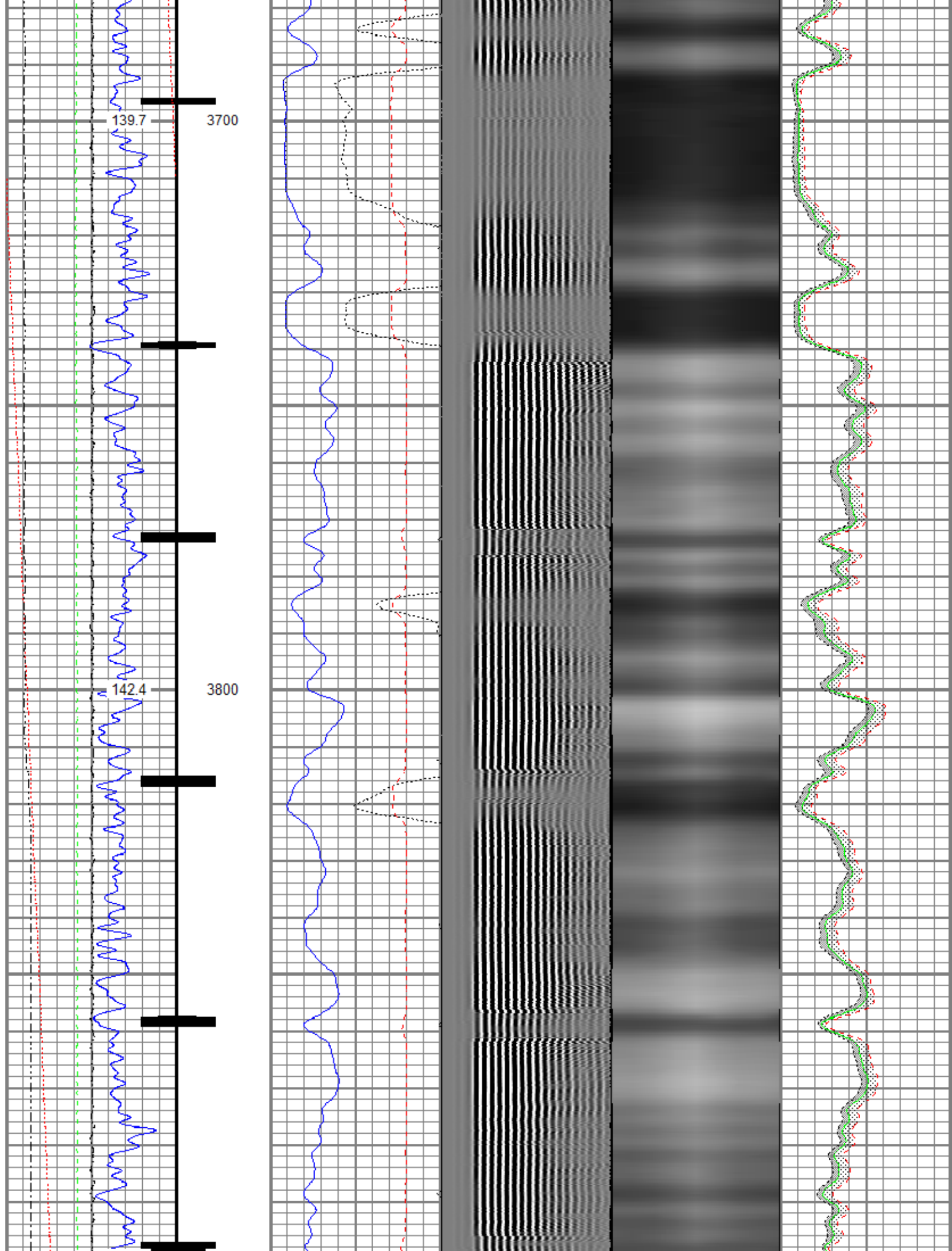


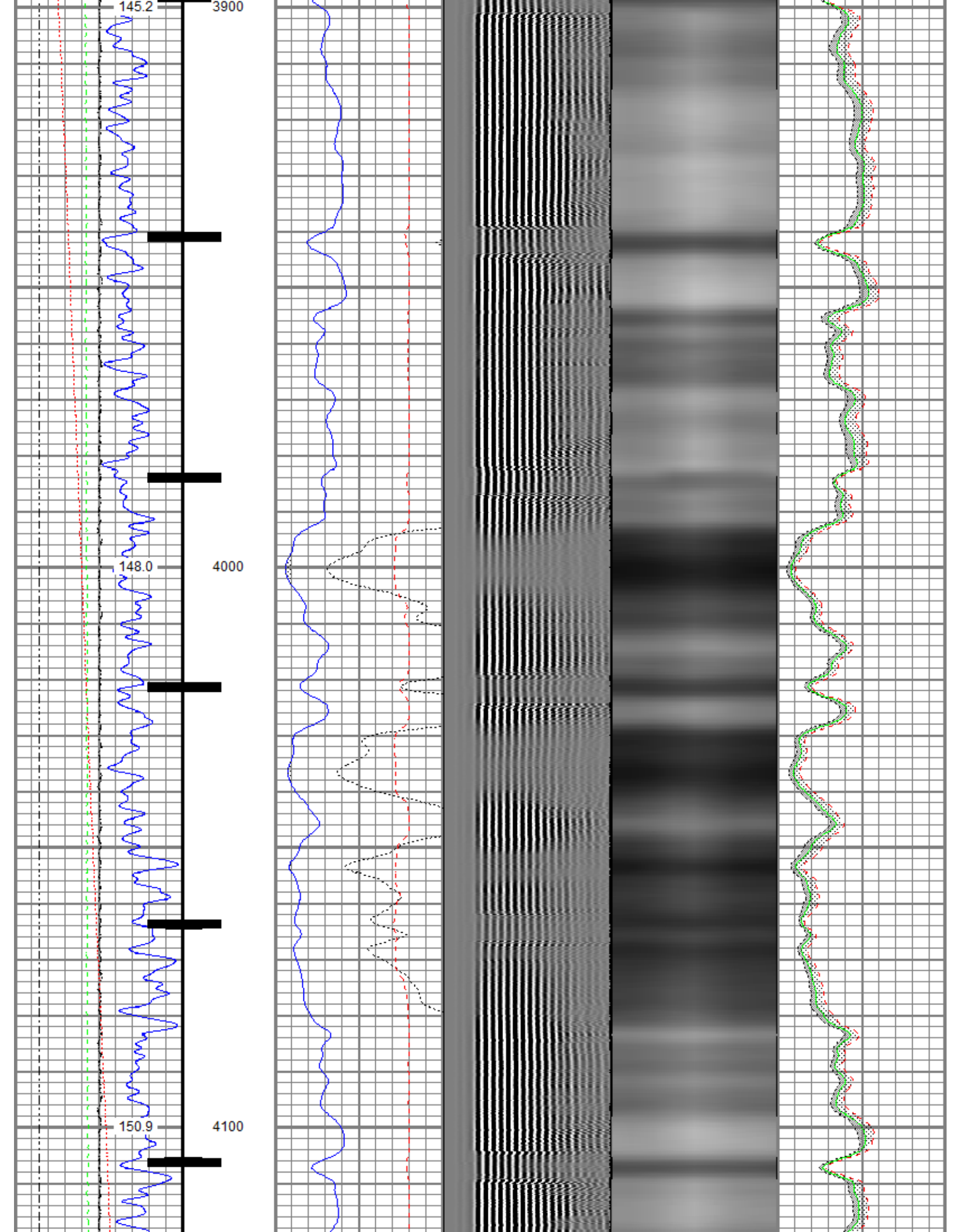


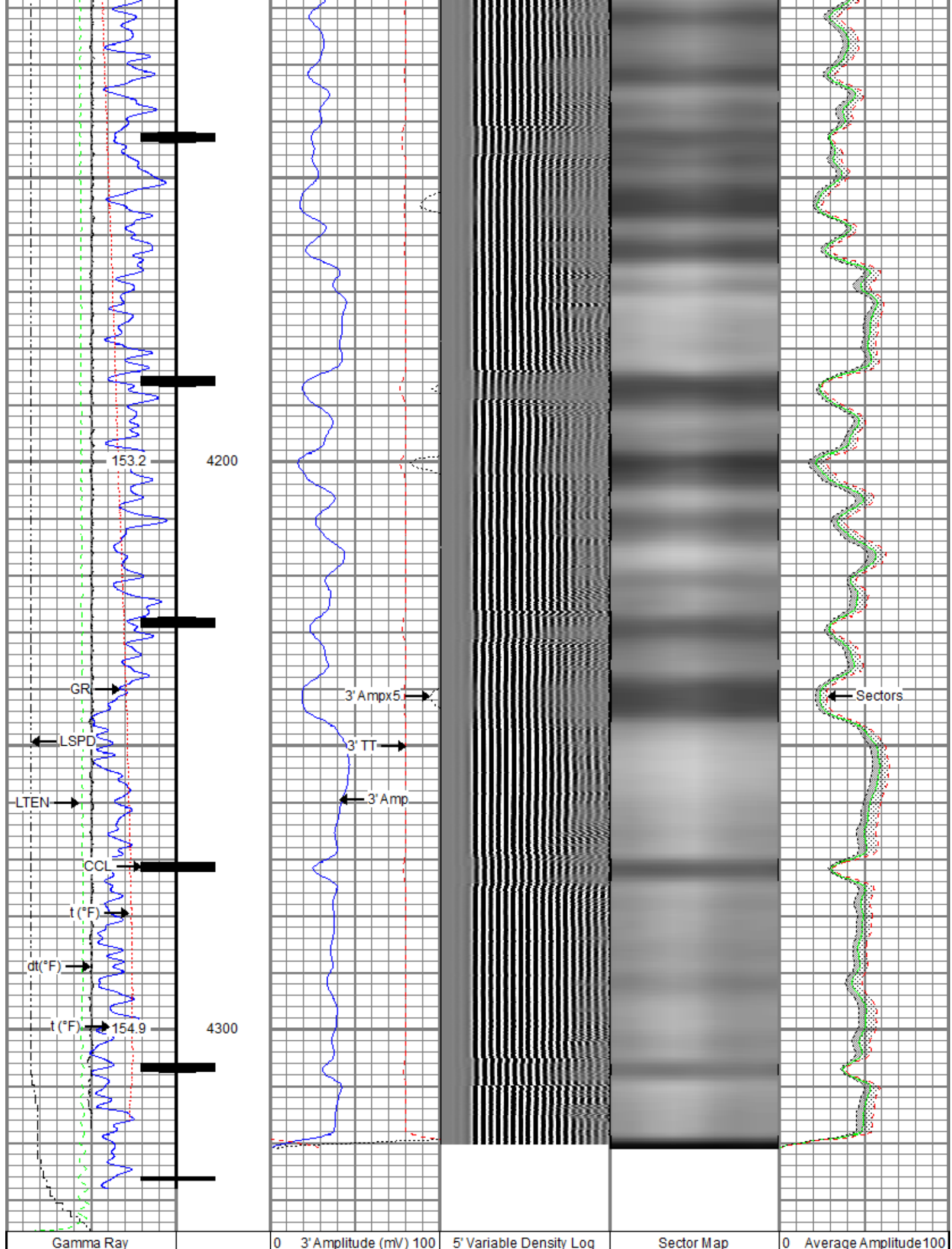












0 (GAPI) 120	3' Amplitude x 5	200	1200	MinimumAmplitude
Casing Collar Locator	0 (mV) 20			0 100
0 Temperature (degF) 20	3' Travel Time			MaximumAmplitude
Line Speed	650 (usec) 150			0 100
-150 (ft/min) 150				
0 Line Tension (lb) 2000				
Differential Temperature				
-2 (degF) 2				

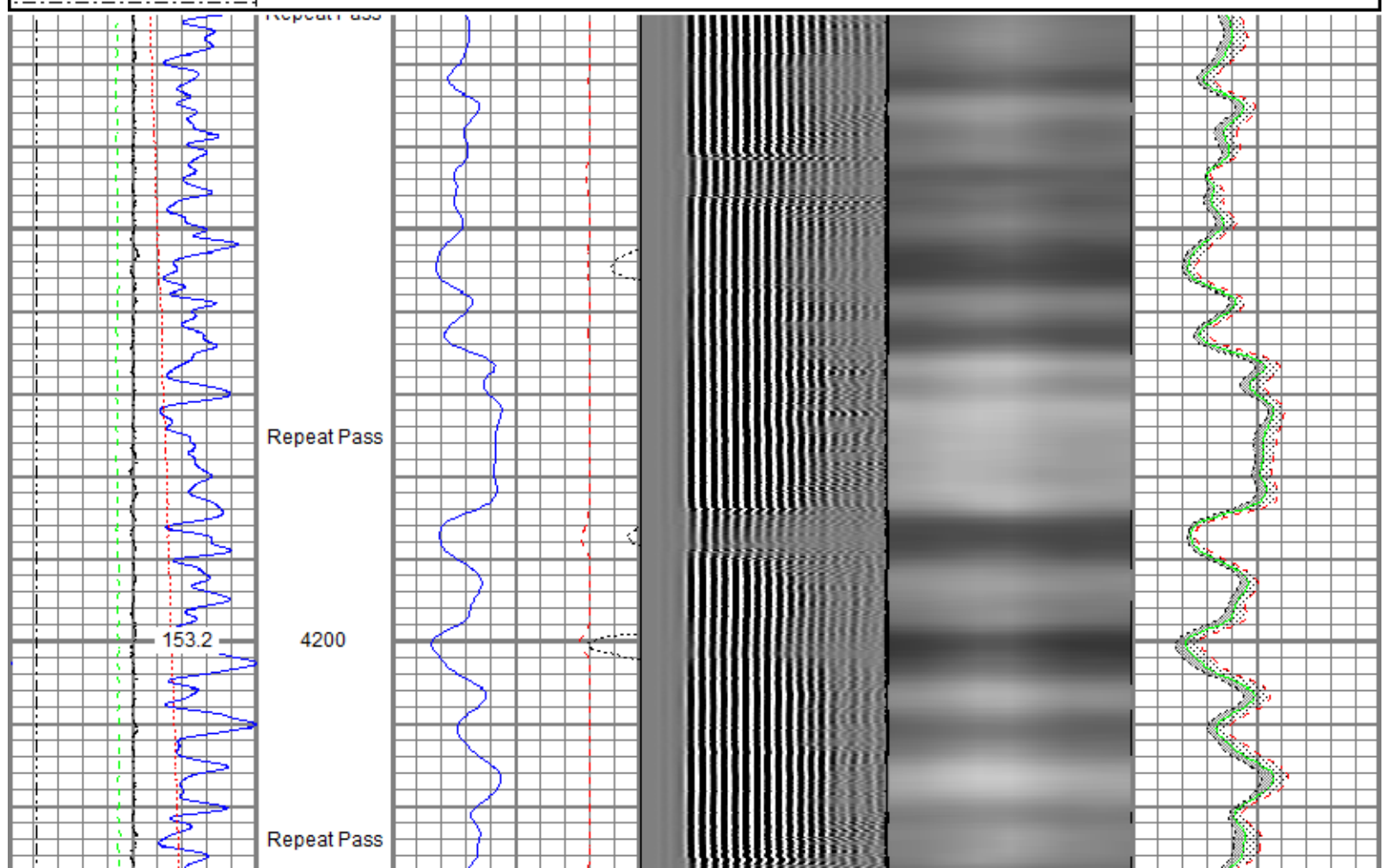


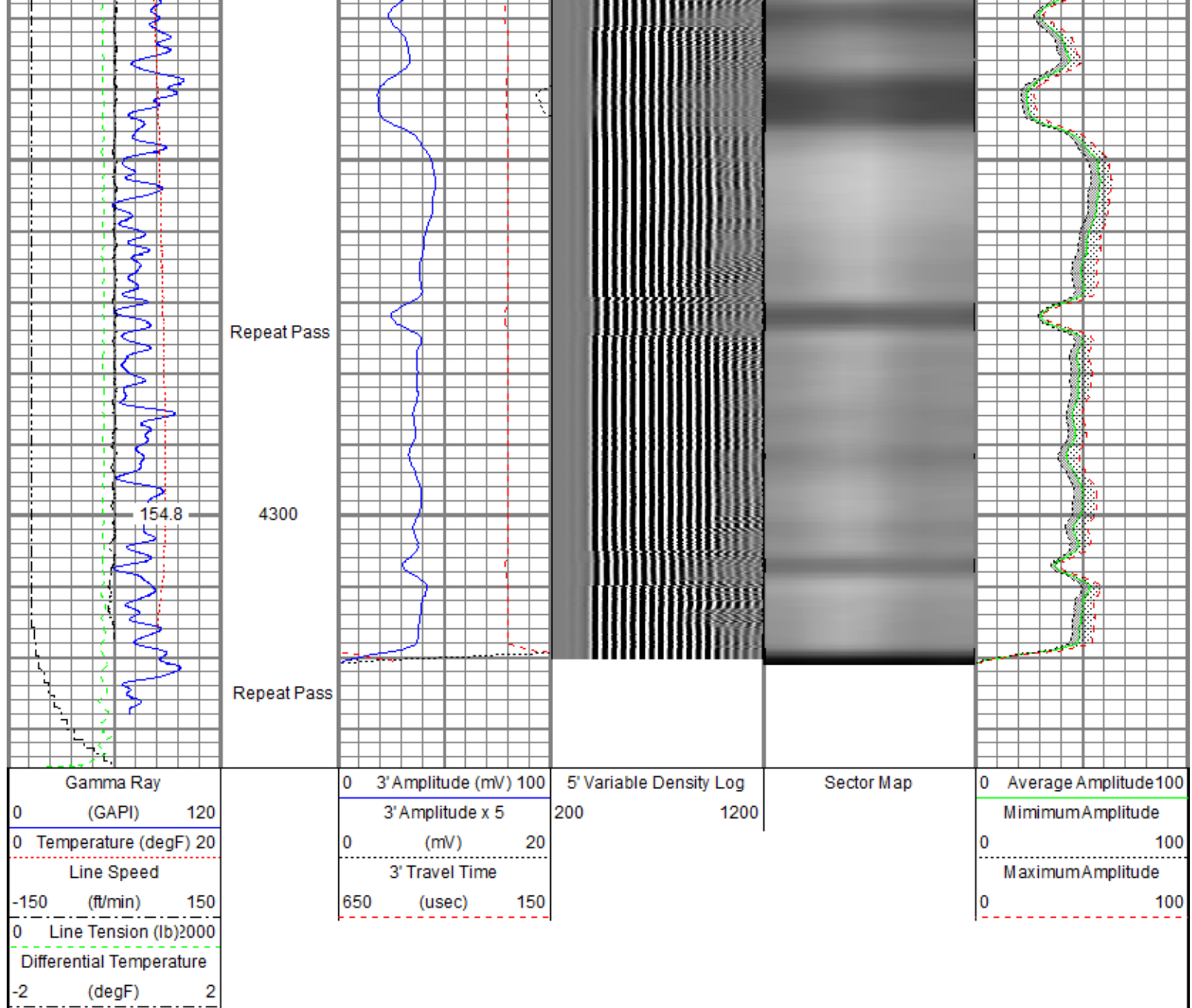
Repeat Pass

Recorded With 0 PSI Surface Induced Pressure

Database File anadarko\0512331098_anadarko_cannon w15-18d_rbl_02-26-19\0512331098_anadarko_cannon w15-18d_rbl_02-26-19.db
Dataset Pathname RCBL/repeat_pass.2
Presentation Format ros_radrii
Dataset Creation Thu Feb 28 15:20:48 2019
Charted by Depth in Feet scaled 1:240

Gamma Ray	0 3' Amplitude (mV) 100	5' Variable Density Log	Sector Map	0 Average Amplitude 100
0 (GAPI) 120	3' Amplitude x 5	200 1200		MinimumAmplitude
0 Temperature (degF) 20	0 (mV) 20			0 100
Line Speed	3' Travel Time			MaximumAmplitude
-150 (ft/min) 150	650 (usec) 150			0 100
0 Line Tension (lb) 2000				
Differential Temperature				
-2 (degF) 2				





Sensor	Offset (ft)	Schematic	Description	Length (ft)	O.D. (in)	Weight (lb)
TEMP	18.23		Titan CHD-14375 GO Titan 1-7/16" Assembled Electric Cable Head w/ 1" Fishing Neck	1.03	1.44	3.60
			Probe CENT-2750 Probe 2-3/4" Electric Inline Bowspring Centralizer	2.88	2.75	20.00

WVFS8	16.00		Probe Radii-2750 RBT (FW1302-002) Probe 2-3/4" Radial Cement Bond Tool with Integral Temperature Sub	9.39	2.75	105.00
WVFS7	16.00					
WVFS6	16.00					
WVFS5	16.00					
WVFS4	16.00					
WVFS3	16.00					
WVFS2	16.00					
WVFS1	16.00					
WVFCAL	16.00					
WVF3FT	16.00					
WVF5FT	15.00					
			Probe CENT-2750 Probe 2-3/4" Electric Inline Bowspring Centralizer	2.88	2.75	20.00
CCL\$2	7.38		Probe CCL-2750 SA (FW1307-076) Probe 2-3/4" Digital Stand Alone Six Magnet Logging CCL	2.66	2.75	35.00
CCL\$1	7.38					
GR	5.24		Probe GR-2750 SA (FW1307-078) Probe 2-3/4" Digital Stand Alone Gamma Ray	3.33	2.75	55.00
			Probe CENT-2750 Probe 2-3/4" Electric Inline Bowspring Centralizer	2.88	2.75	20.00
Dataset: 0512331098_Anadarko_Cannon W15-18D_RBL_02-26-19.db: field/well/RCBL/main_pass.1						
Total length: 25.06 ft						
Total weight: 258.60 lb						
O.D.: 2.75 in						

Calibration Report			
Database File	C:\ProgramData\Warrior\Data\Anadarko\0512331098_Anadarko_Cannon W15-18D_RBL_02-26-19\0512331098_Anadarko_Ca		
Dataset Pathname	RCBL/main_pass.1		
Dataset Creation	Tue Feb 26 17:05:22 2019		
Gamma Ray Calibration Report			
Serial Number:	FW1307-078		
Tool Model:	2750 SA		
Performed:	Mon Oct 01 11:32:38 2018		
Calibrator Value:	637.0	GAPI	
Background Reading:	108.2	cps	
Calibrator Reading:	1134.5	cps	
Sensitivity:	0.6207	GAPI/cps	
Segmented Cement Bond Log Calibration Report			
Serial Number:	FW1302-002		
Tool Model:	2750 RBT		

Tool Model: 2750 RBT
 Calibration Casing Diameter: 4.500 in
 Calibration Depth: 0.000 ft

Master Calibration, performed (Derived):

	Raw (v)		Calibrated (mv)		Results	
	Zero	Cal	Zero	Cal	Gain	Offset
3'	0.005	0.636	0.800	81.196	127.531	0.117
CAL	0.739	0.740				
5'	0.004	0.559	0.800	81.196	144.748	0.230
SUM						
S1	0.002	0.615	0.000	100.000	163.101	-0.334
S2	0.004	0.627	0.000	100.000	160.550	-0.674
S3	0.007	0.665	0.000	100.000	151.882	-1.047
S4	0.007	0.717	0.000	100.000	140.880	-1.025
S5	0.007	0.701	0.000	100.000	144.049	-1.047
S6	0.007	0.674	0.000	100.000	149.880	-0.995
S7	0.003	0.630	0.000	100.000	159.358	-0.460
S8	-0.005	0.602	0.000	100.000	164.626	0.863

Internal Reference Calibration, performed (Not Performed):

	Raw (v)		Calibrated (v)		Results	
	Zero	Cal	Zero	Cal	Gain	Offset
CAL	0.000	0.000	0.739	0.740	1.000	0.000

Air Zero Calibration, performed Tue Feb 26 10:48:00 2019:

	Raw (v)		Calibrated (v)		Results	
	Zero		Zero		Offset	
3'	-0.004		0.000		-0.001	
5'	0.009		0.000		0.000	
SUM						
S1	-0.007		0.000		-0.001	
S2	-0.004		0.000		-0.001	
S3	-0.004		0.000		-0.000	
S4	-0.004		0.000		-0.001	
S5	-0.004		0.000		-0.000	
S6	-0.004		0.000		0.000	
S7	-0.005		0.000		-0.001	
S8	-0.004		0.000		-0.001	

Temperature Calibration Report

Serial Number: FW1302-002
 Tool Model: 2750 RBT
 Performed: Mon Oct 01 11:32:15 2018

	Reference	Reading
Low Reference:	100.00 degF	110.72 degF
High Reference:	350.00 degF	409.18 degF

Gain: 0.84
 Offset: 7.26
 Delta Spacing: 1

Company: Kerr-McGee Oil & Gas Onshore, L.P.
 Well: Cannon W15-18D





Field

Wattenberg

County

Weld

State

Colorado