



RADIAL CEMENT
BOND LOG

Company ANADARKO PETROLEUM CORP.
Well CANNON W15-18D
Field WATTENBERG
County WELD
State COLORADO

Company ANADARKO PETROLEUM CORP.
Well CANNON W15-18D
Field WATTENBERG
County WELD State COLORADO

Location: API #: 05-123-31098
NE NW
LAT:40.14187 LONG:-104.76774
SEC 15 TWP 2N RGE 66W
Permanent Datum GL Elevation 4989'
Log Measured From KB=15'
Drilling Measured From KB
Other Services N/A
Elevation K.B. 5004'
D.F. 5003'
G.L. 4989'

Date 10 MARCH 2020

Run Number 1
Depth Driller 7750'
Depth Logger 1100'
Bottom Logged Interval 1100'
Top Log Interval SURFACE
Open Hole Size 7.875"
Type Fluid H2O
Density / Viscosity 8.3
Max. Recorded Temp. N/A
Estimated Cement Top SEE LOG
Time Well Ready ROA
Time Logger on Bottom 1405
Equipment Number W-054
Location WINDSOR
Recorded By MCDANIEL
Witnessed By SOCORRO OLIVAS

Borehole Record				Tubing Record			
Run Number	Bit	From	To	Size	Weight	From	To
1	12.25"	KB	1004'				
2	7.875"	1004'	7750'				

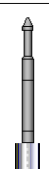
Casing Record Size Wgt/Ft Top Bottom
Surface String 8.63" 24# KB 997'
Prot. String
Production String 4.50" 11.6# KB 7739'
Liner

<<< Fold Here >>>

All interpretations are opinions based on inferences from electrical or other measurements and we cannot and do not guarantee the accuracy or correctness of any interpretation, and we shall not, except in the case of gross or willful negligence on our part, be liable or responsible for any loss, costs, damages, or expenses incurred or sustained by anyone resulting from any interpretation made by any of our officers, agents or employees. These interpretations are also subject to our general terms and conditions set out in our current Price Schedule.

Comments

LOG RAN W/ 500PSI @ SURFACE
LOG NOT CORRELATED TO ANY OTHER LOG
FREE PIPE CALIBRATION PERFORMED @ 725'
SHOP CALIBRATION PERFORMED ON 3/5/2020

Sensor	Offset (ft)	Schematic	Description	Len (ft)	OD (in)	Wt (lb)
			1.4375CHD Titan Cable Head 1 7/16	1.00	1.44	10.00

Tool Joint	Tool Joint Depth (ft)	Tool Joint Description	Tool Joint Length (ft)	Tool Joint Weight (lb)	Tool Joint O.D. (in)
WVF3FT	9.02	RBT8acc-Probe275acc (120663) 2.75" Radial Corrosion with accelerometer	9.20	2.75	110.00
WVFS1	9.02				
WVFS2	9.02				
WVFS3	9.02				
WVFS4	9.02				
WVFS5	9.02				
WVFS6	9.02				
WVFS7	9.02				
WVFS8	9.02				
WVF5FT	8.02				
WVFCAL	4.77	GR-GCT (FW1401-17) Gamma Corrosion Temperature	4.77	2.75	35.00
WVFSYNC	4.77				
RBT_HV	4.77				
ACCX	4.77				
ACCY	4.77				
ACCZ	4.77				
CCL	3.92				
GCT_Temp	3.17				
GR	2.42				

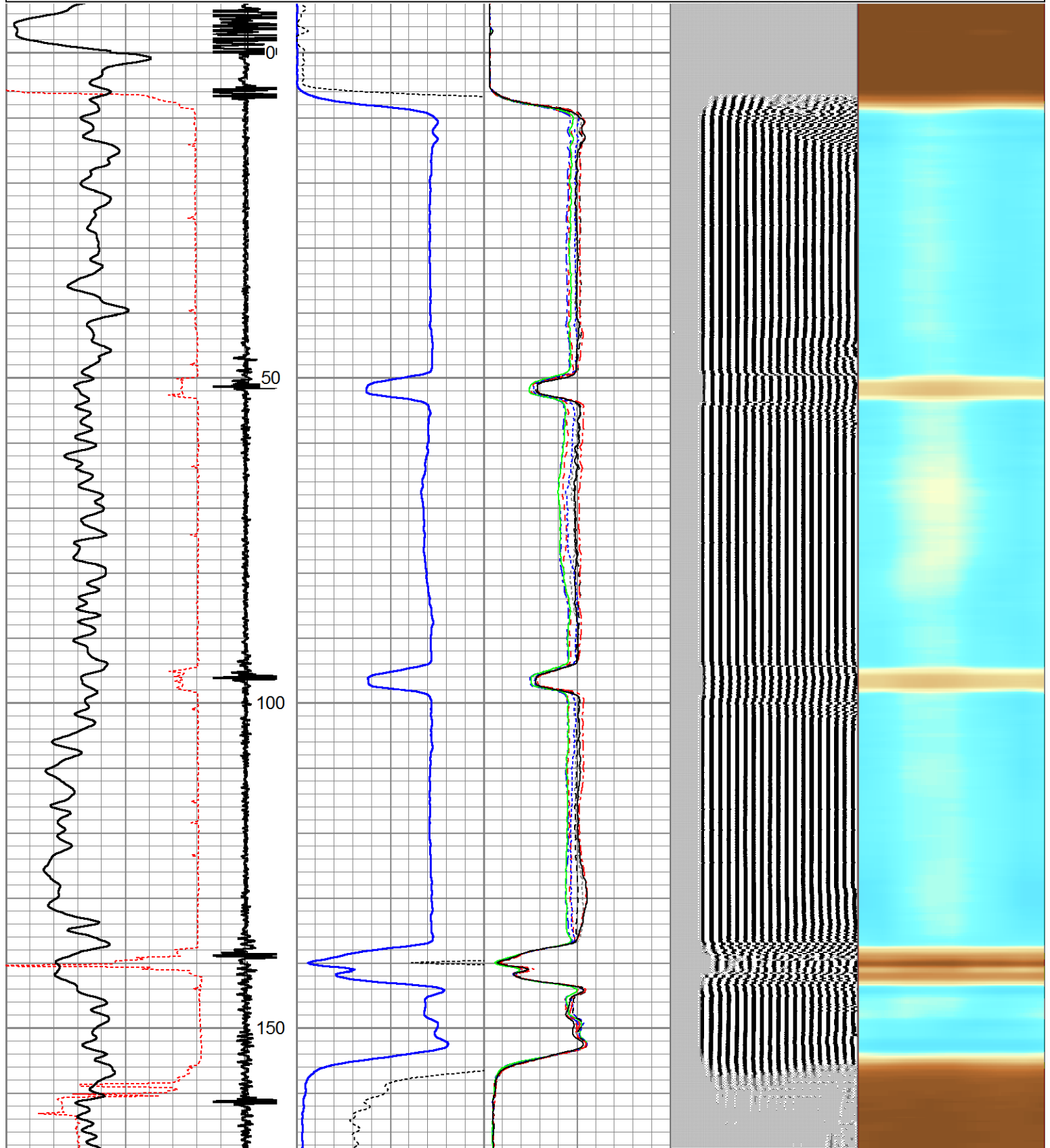
Dataset: oxy_cannon w15-19d_0512331098.db: field/well/run1/pass4.1

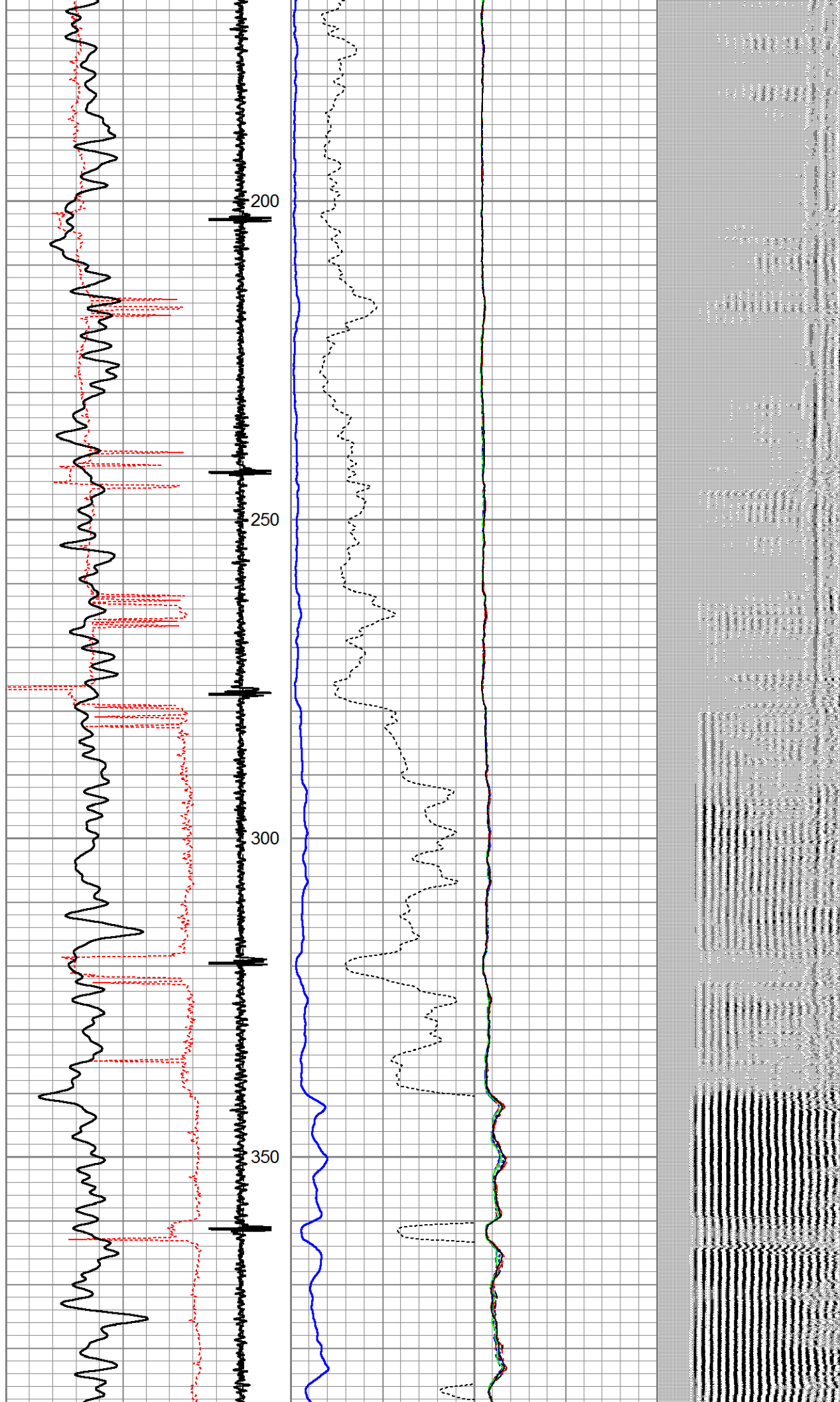
Total Length: 14.97 ft

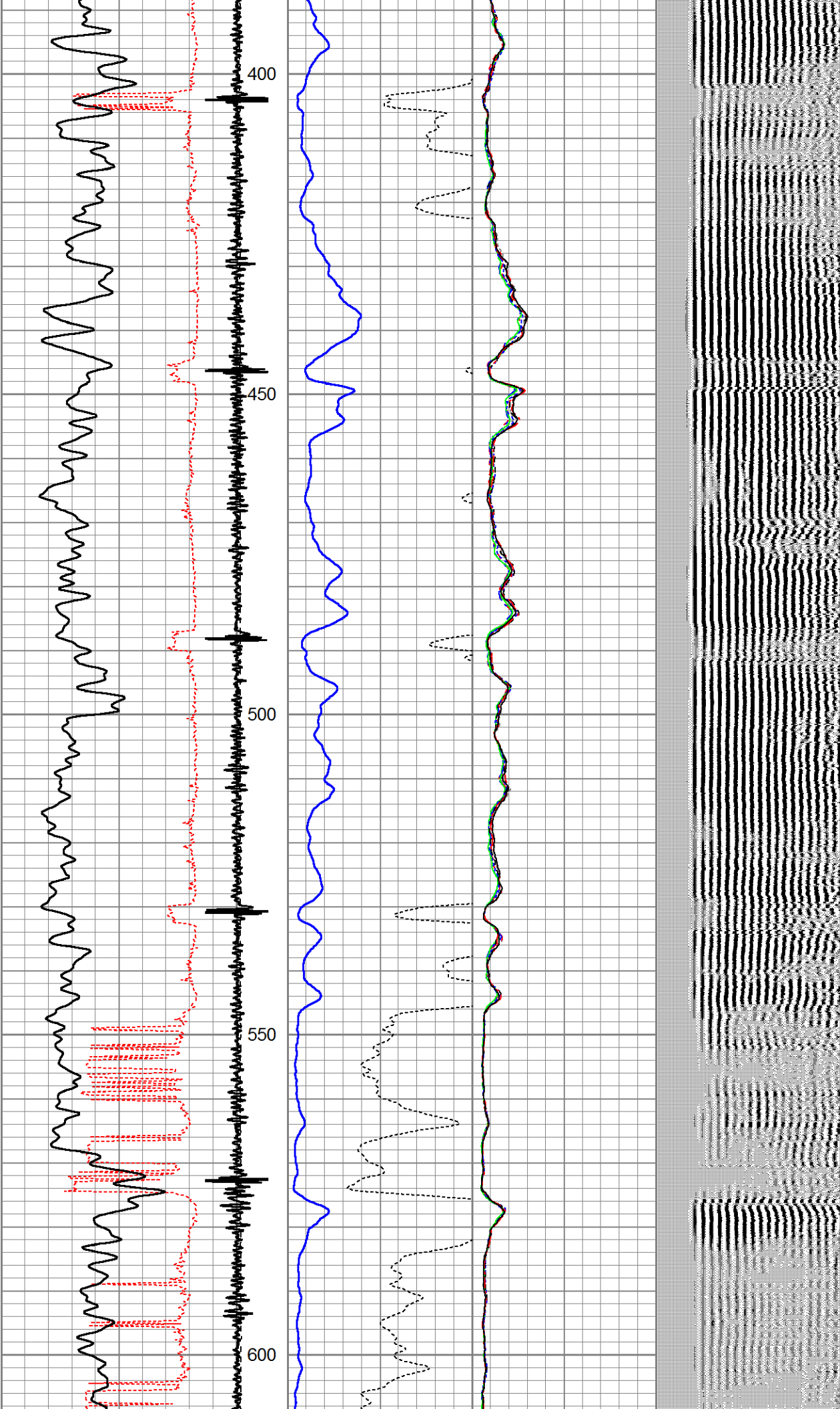
Total Weight: 155.00 lb

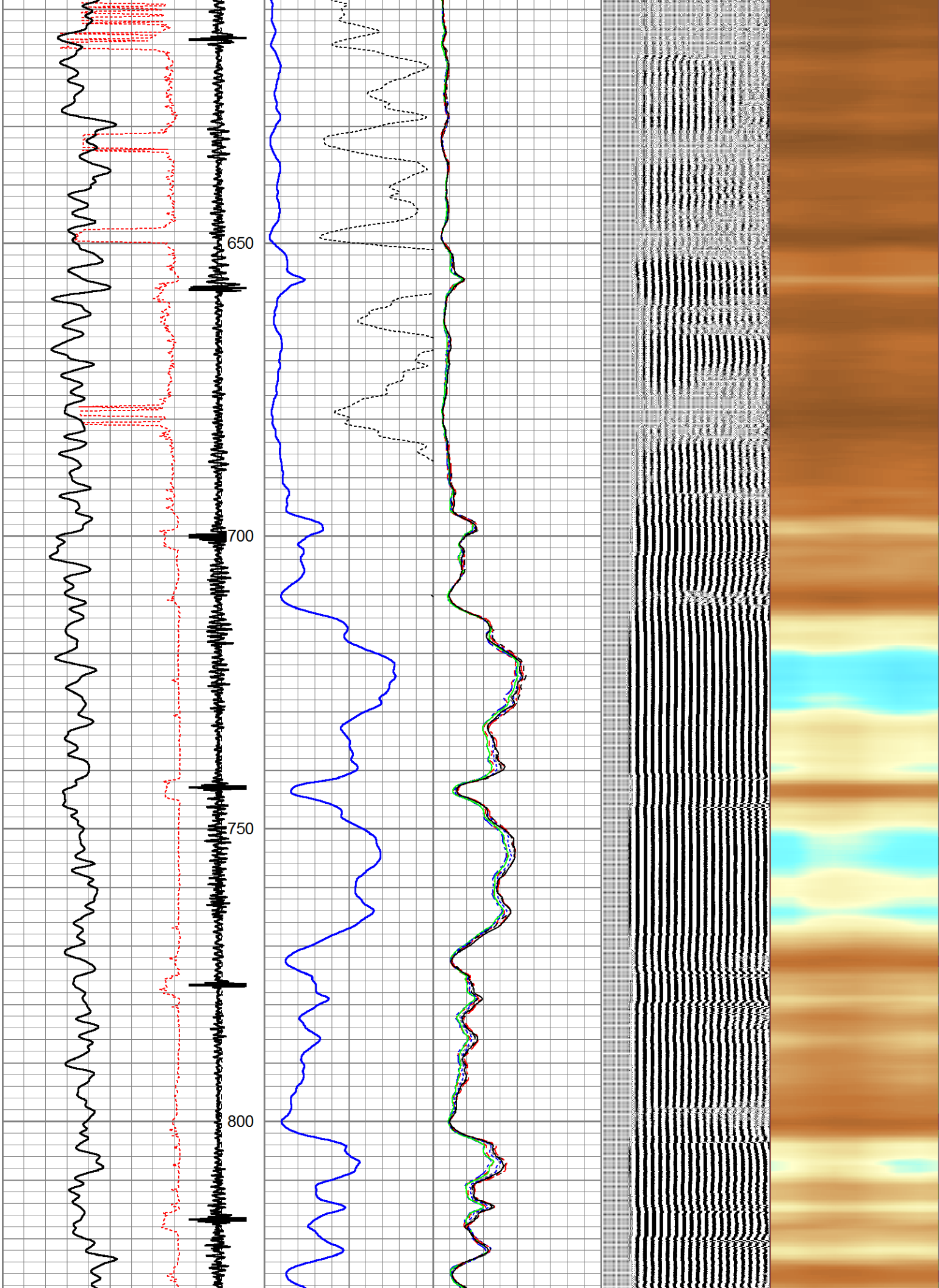
O.D. 2.75 in

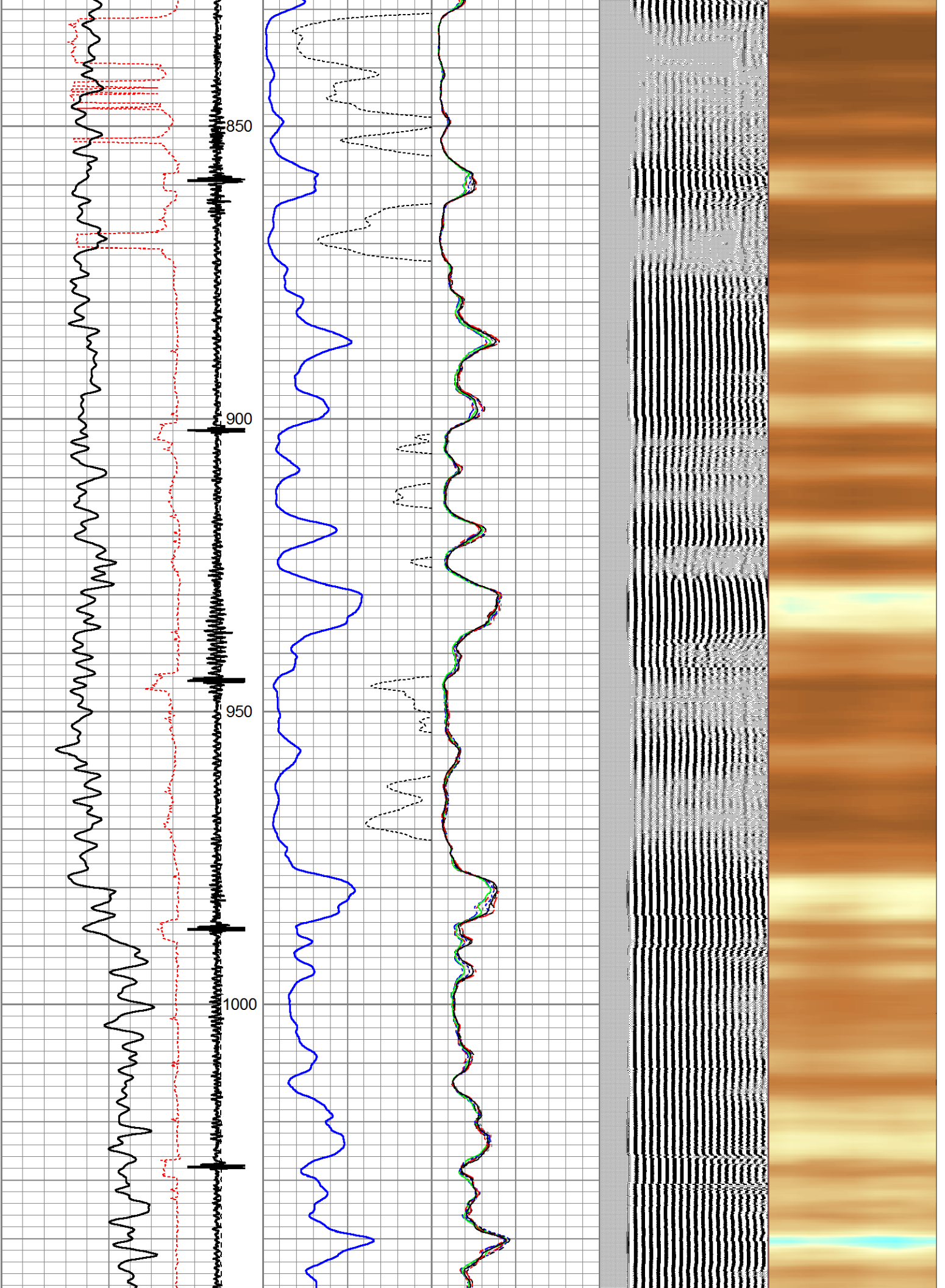
Charted by:		Depth in Feet scaled 1.240											
325	TT (usec)	225	LTEN	0	Amplitude (mV)	100	-5	AMPS2	150	200	VDL	1200	Cement Map
0	GR (GAPI)	200	(lb)		Amplified Amplitude		-5	AMPS3	150				
			CCL	000	0	(mV)	10	-5	AMPS4	150			
								-5	AMPS5	150			
								-5	AMPS6	150			
								-5	AMPS7	150			
								-5	AMPS8	150			
								-5	AMPS1	150			

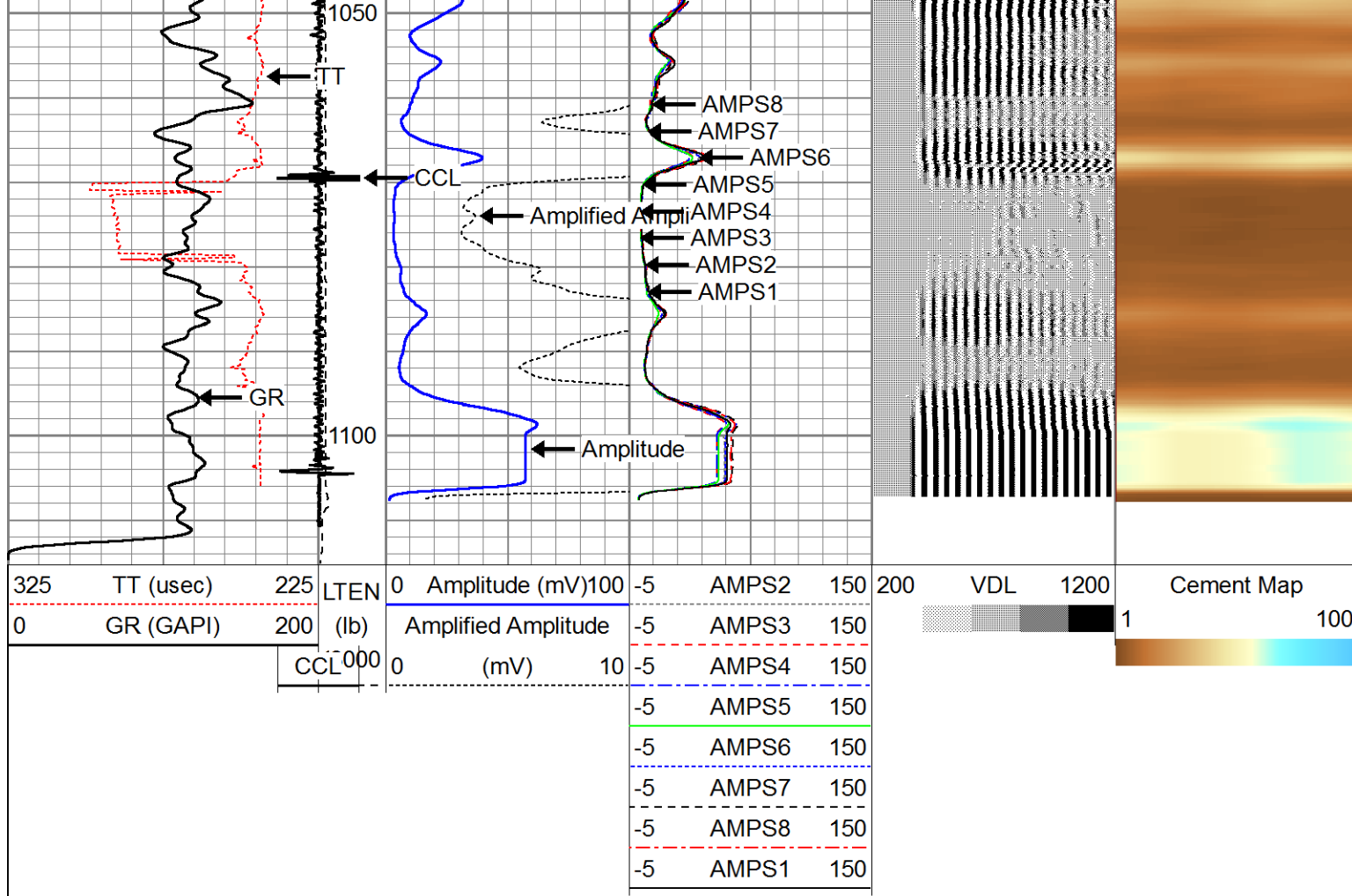












Company
Well
Field
County
State

ANADARKO PETROLEUM CORP.
CANNON W15-18D
WATTENBERG
WELD
COLORADO