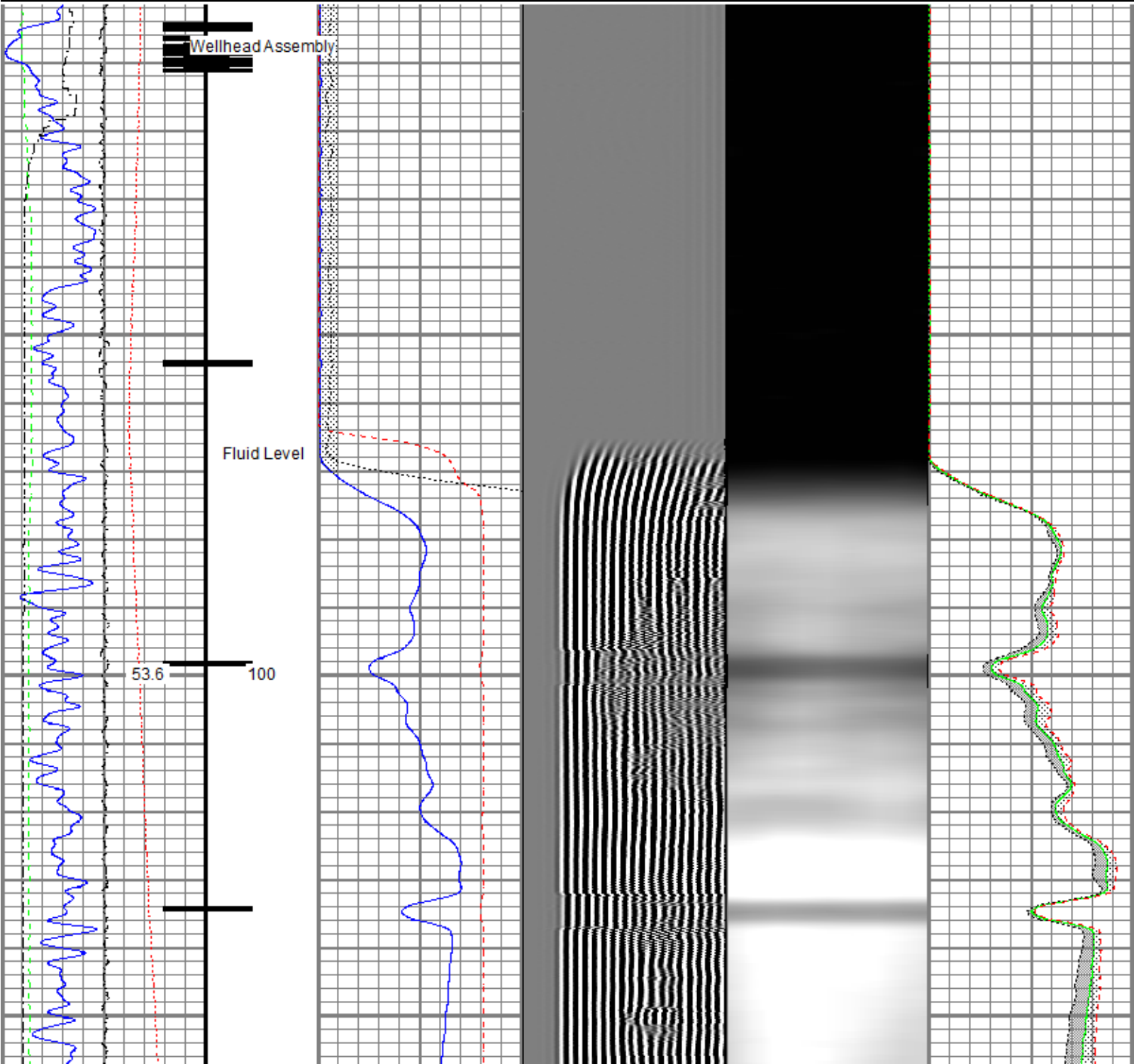


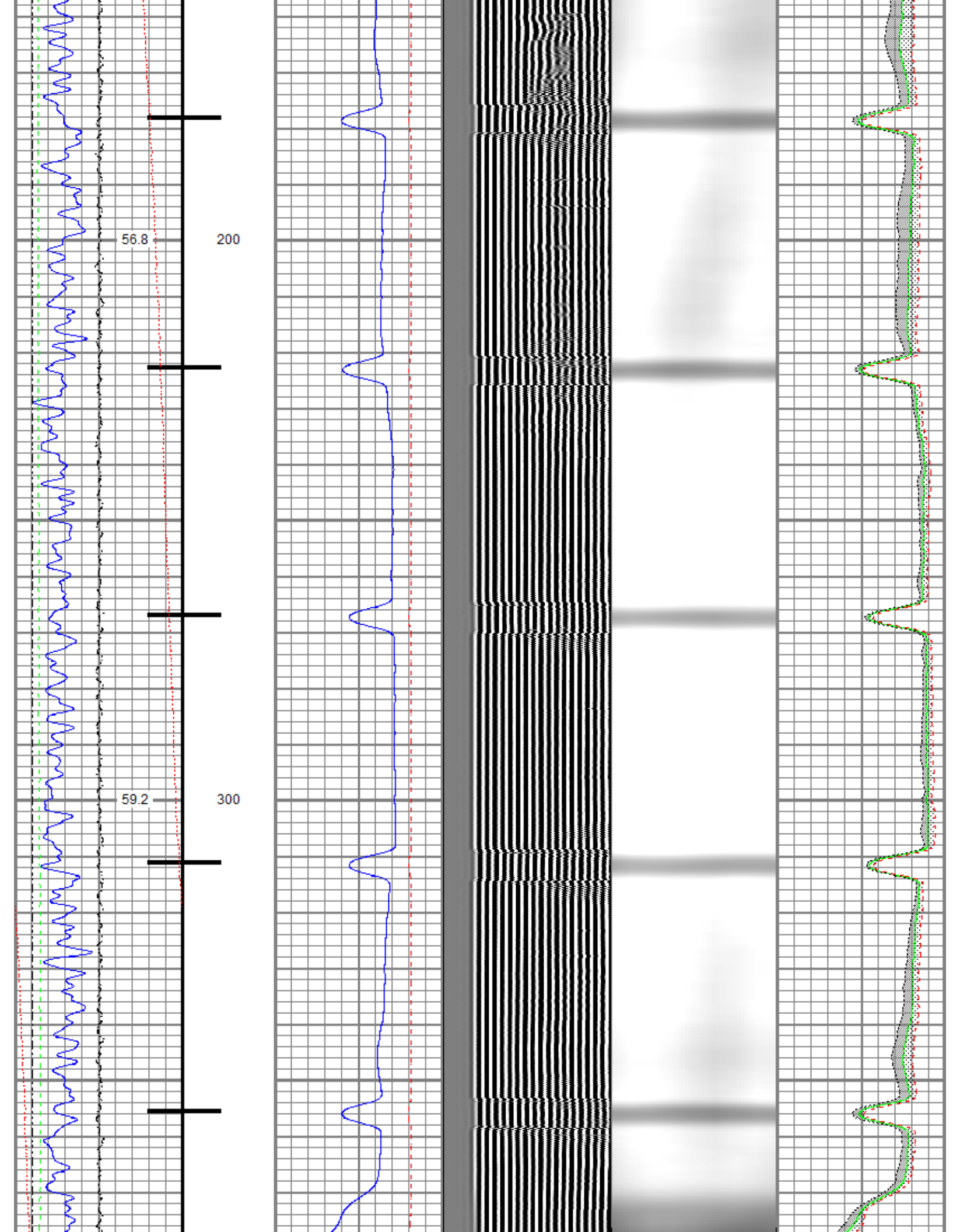


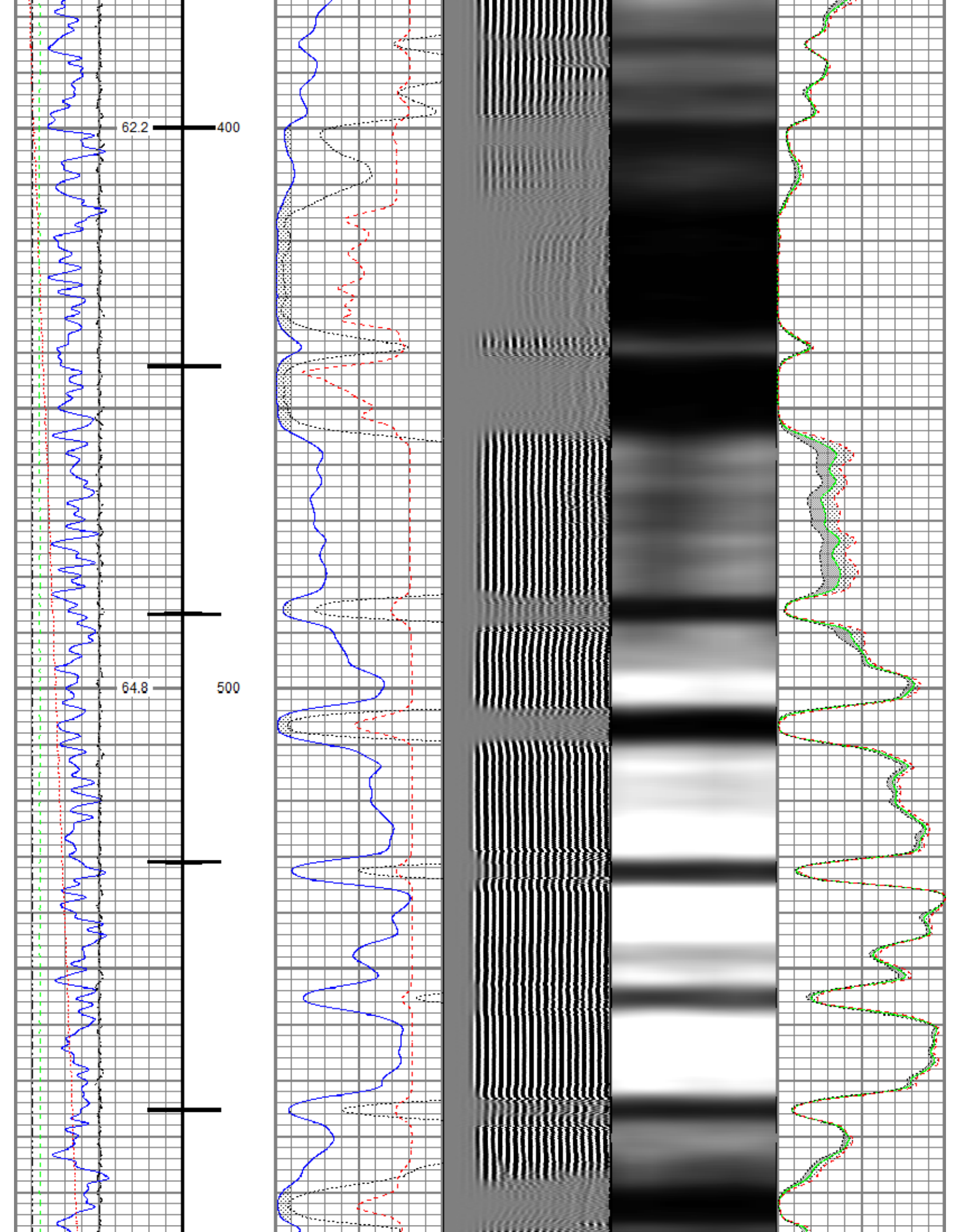
Recorded with 0 PSI Surface Induced Pressure

Database File	oxy\0512330696_oxy_bella 19-8_rbl_02-27-20\processed_0512330696_oxy_bella 19-8_rbl_02-27-20.db
Dataset Pathname	rcbl/pass4.3
Presentation Format	ros_radrii
Dataset Creation	Sat Feb 29 09:31:18 2020
Charted by	Depth in Feet scaled 1:240

Gamma Ray (GAPI) 120	0 3' Amplitude (mV) 100	5' Variable Density Log (usec) 1200	Sector Map	0 Average Amplitude 100
Casing Collar Locator	3' Amplitude x 5 (mV) 20	200		Minimum Amplitude
0 Temperature (degF) 20	0			0 100
Line Speed (ft/min) 150	3' Travel Time (usec) 150			Maximum Amplitude
0 Line Tension (lb) 2000				0 100
Differential Temperature (degF) 2				







67.5

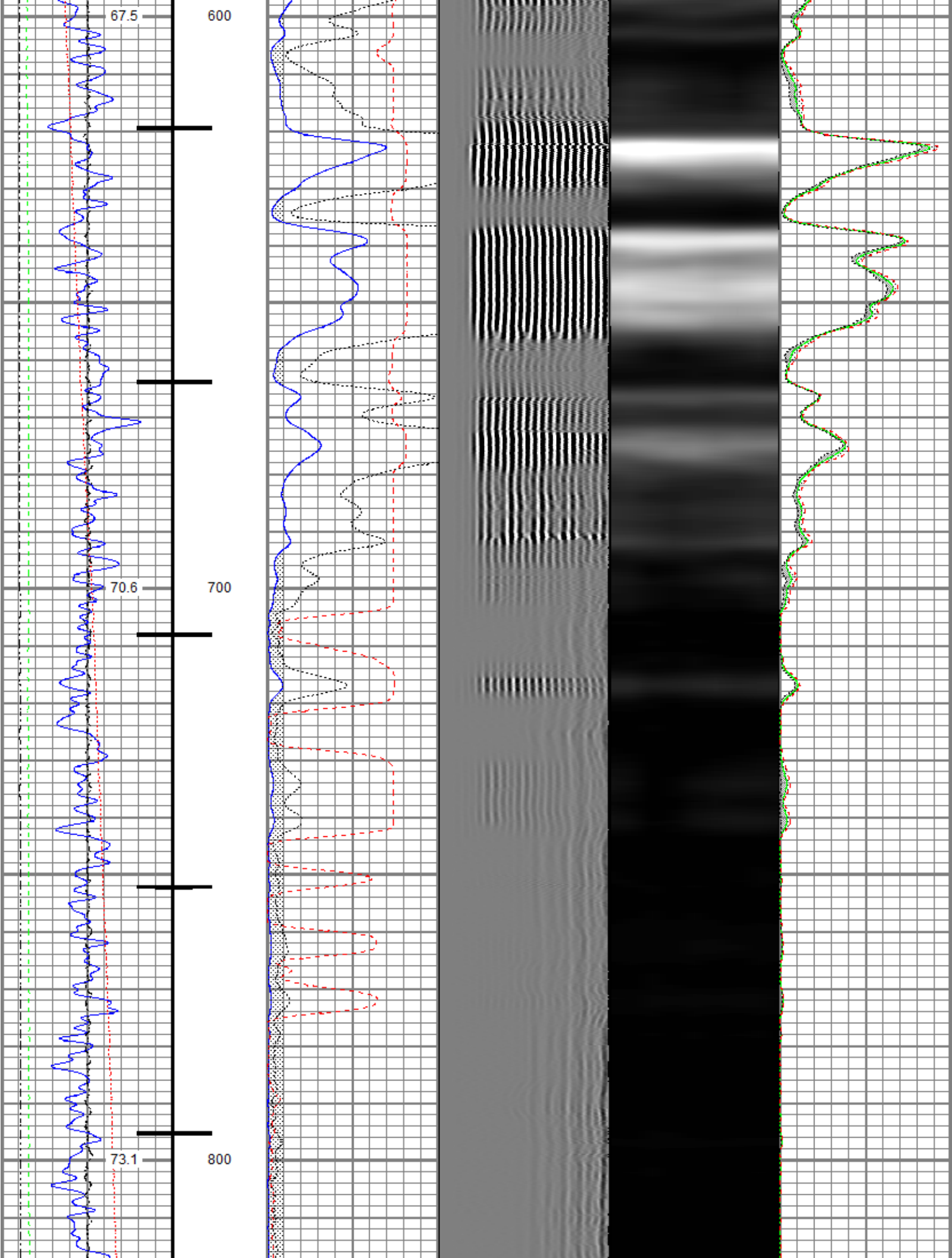
600

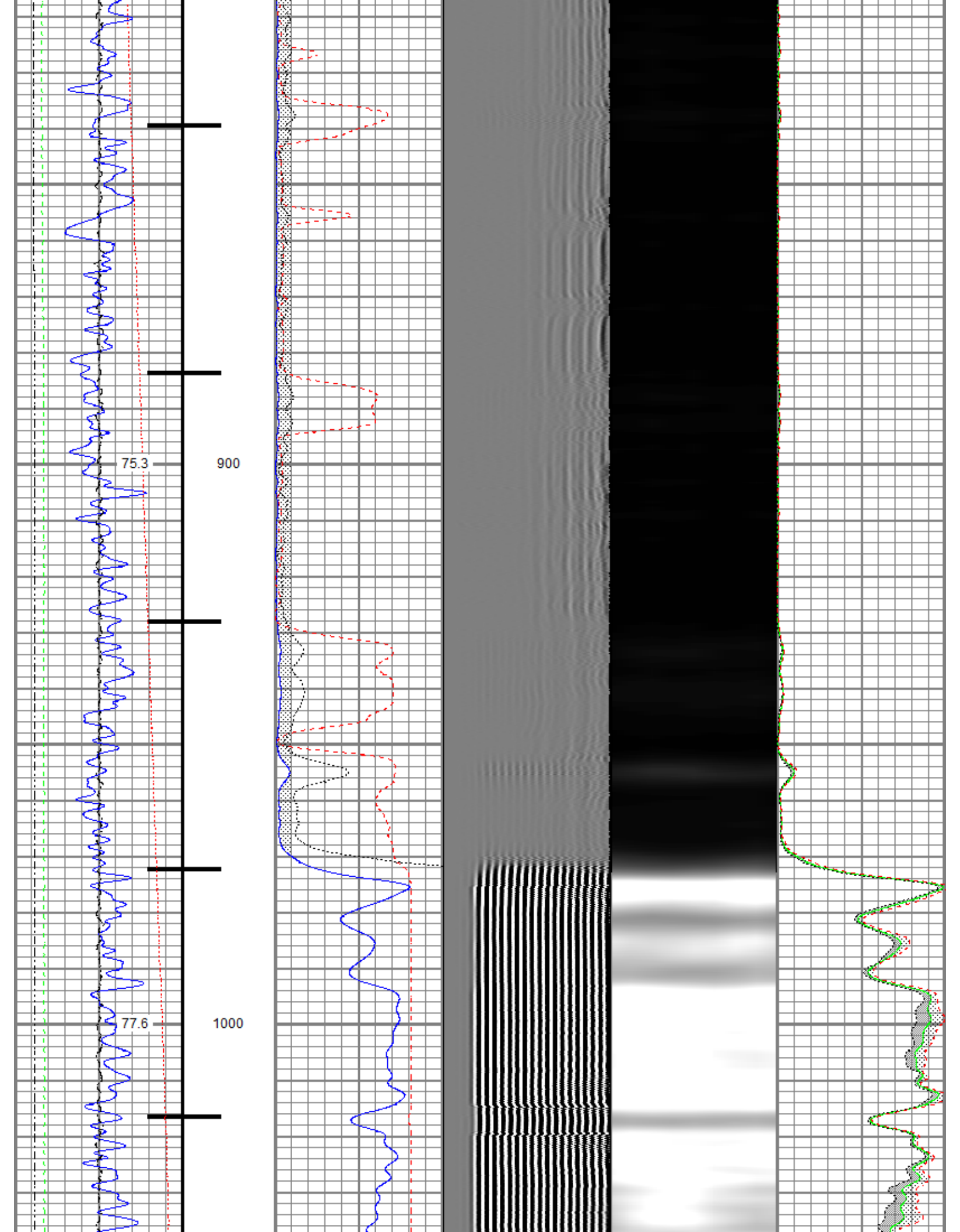
70.6

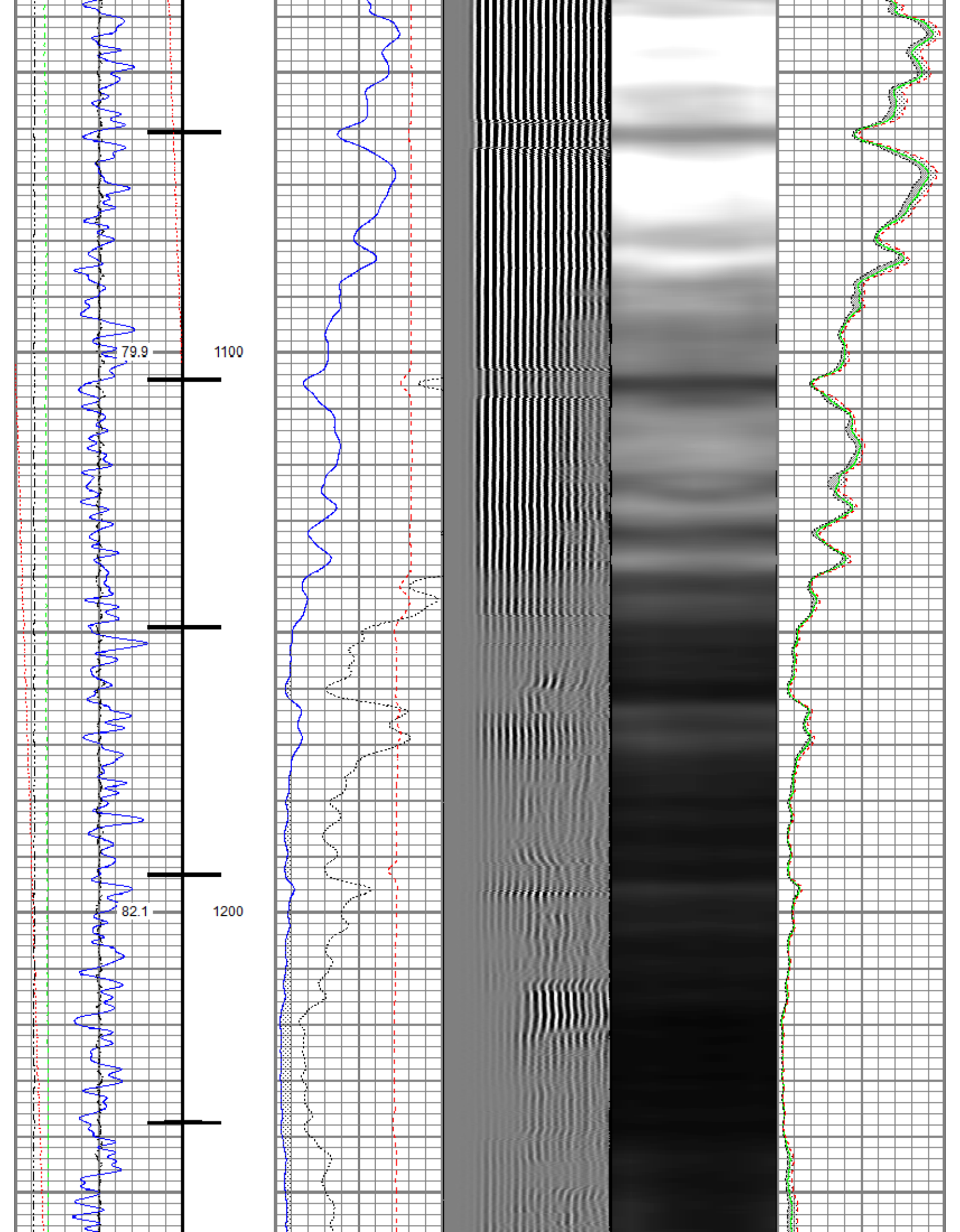
700

73.1

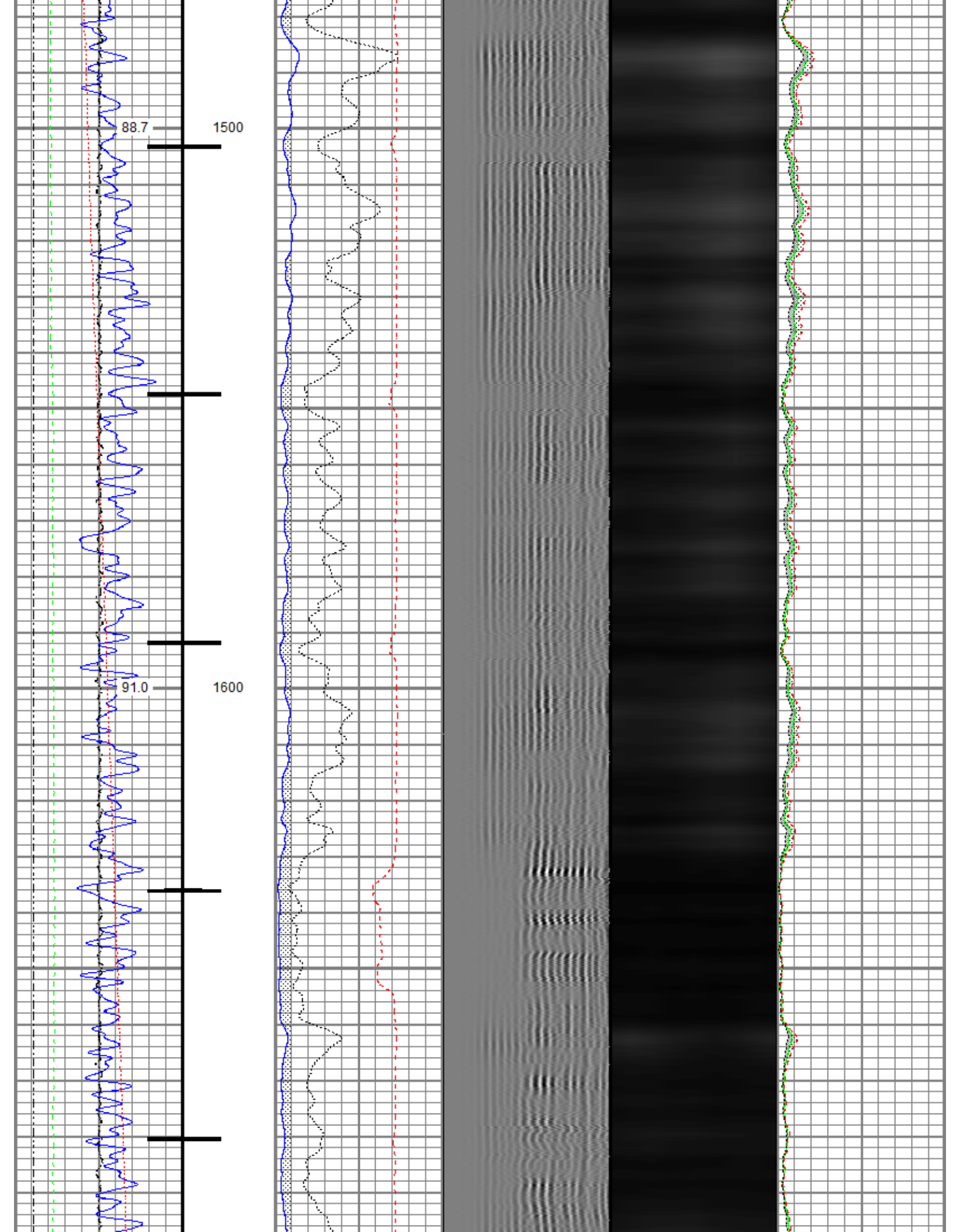
800

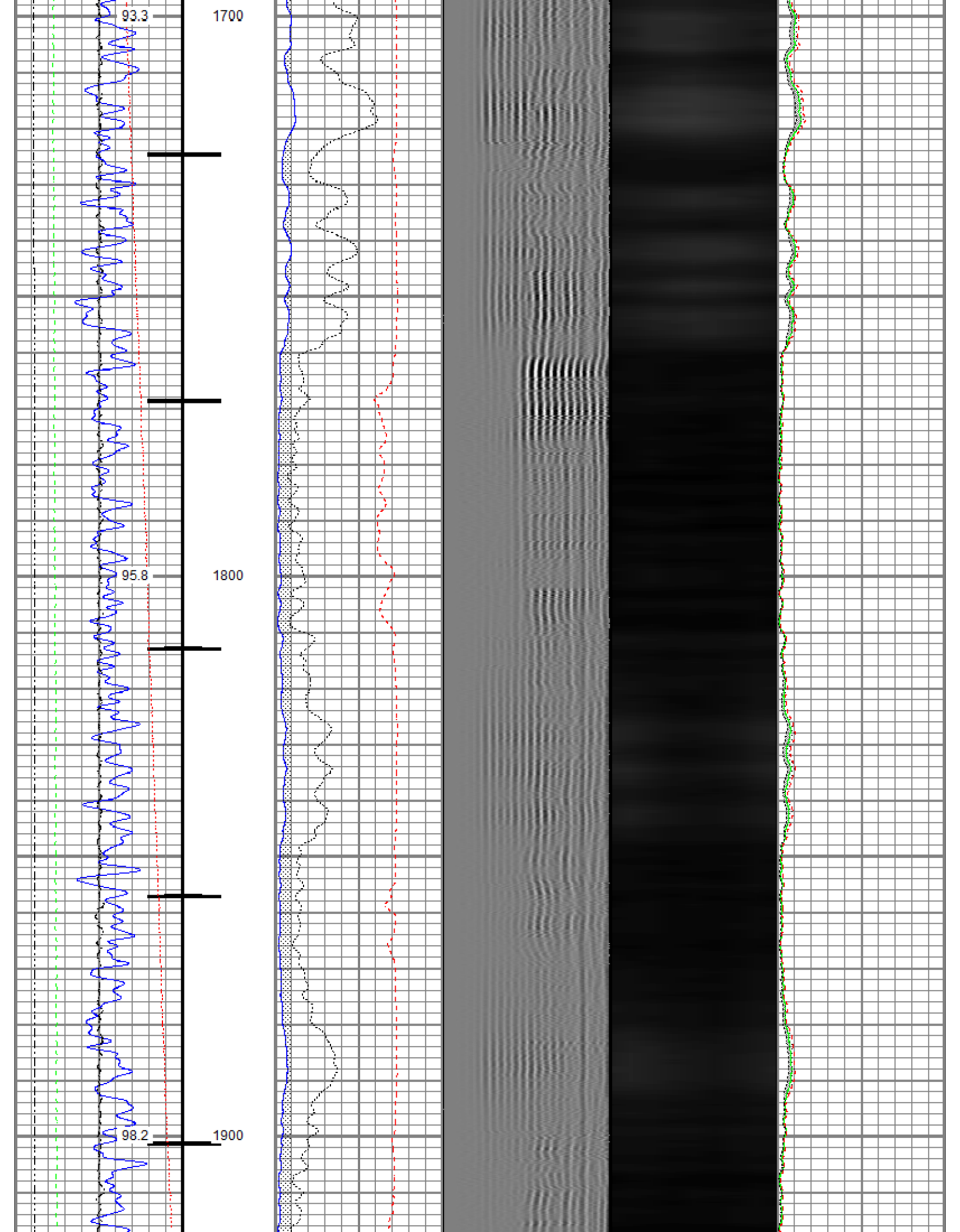


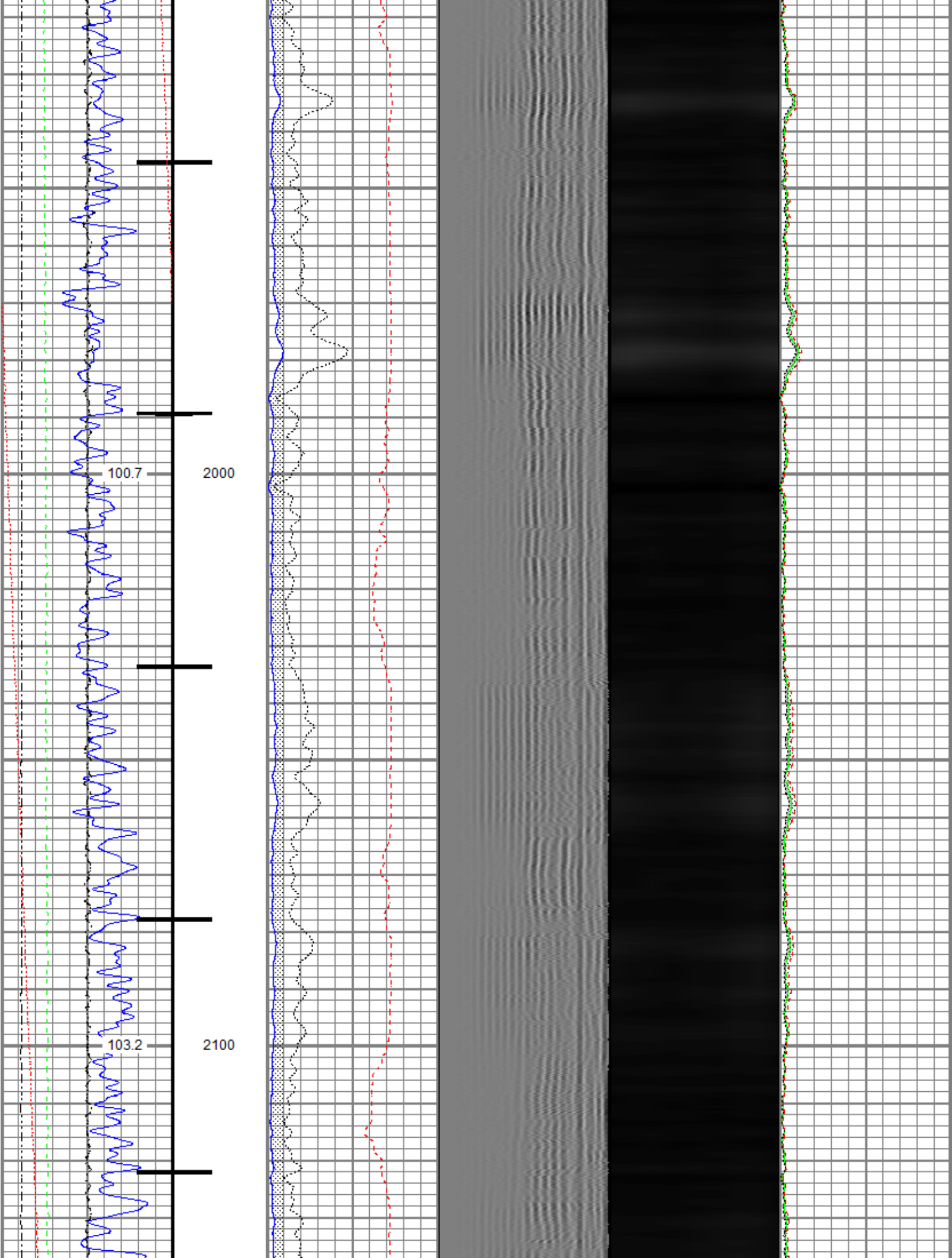


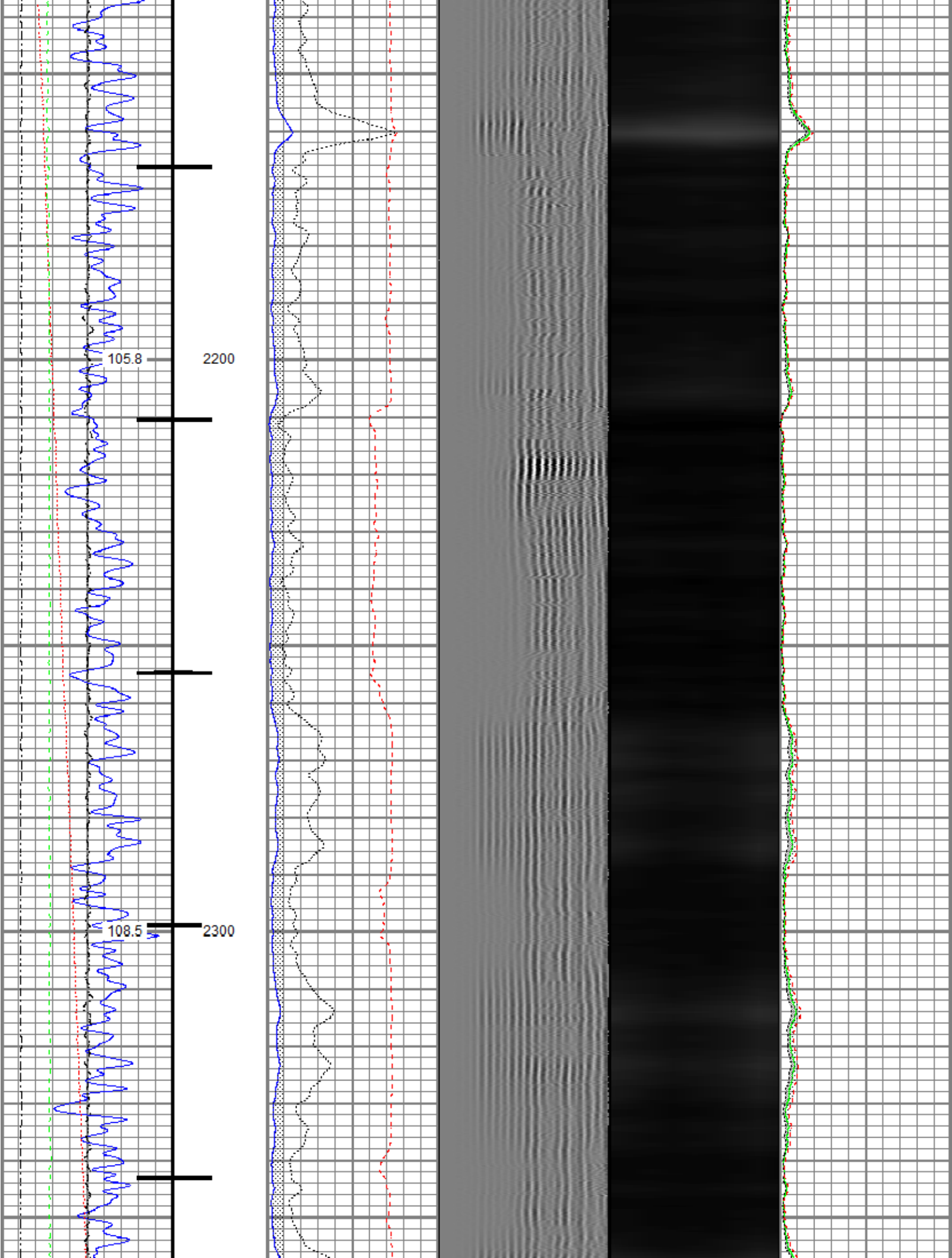


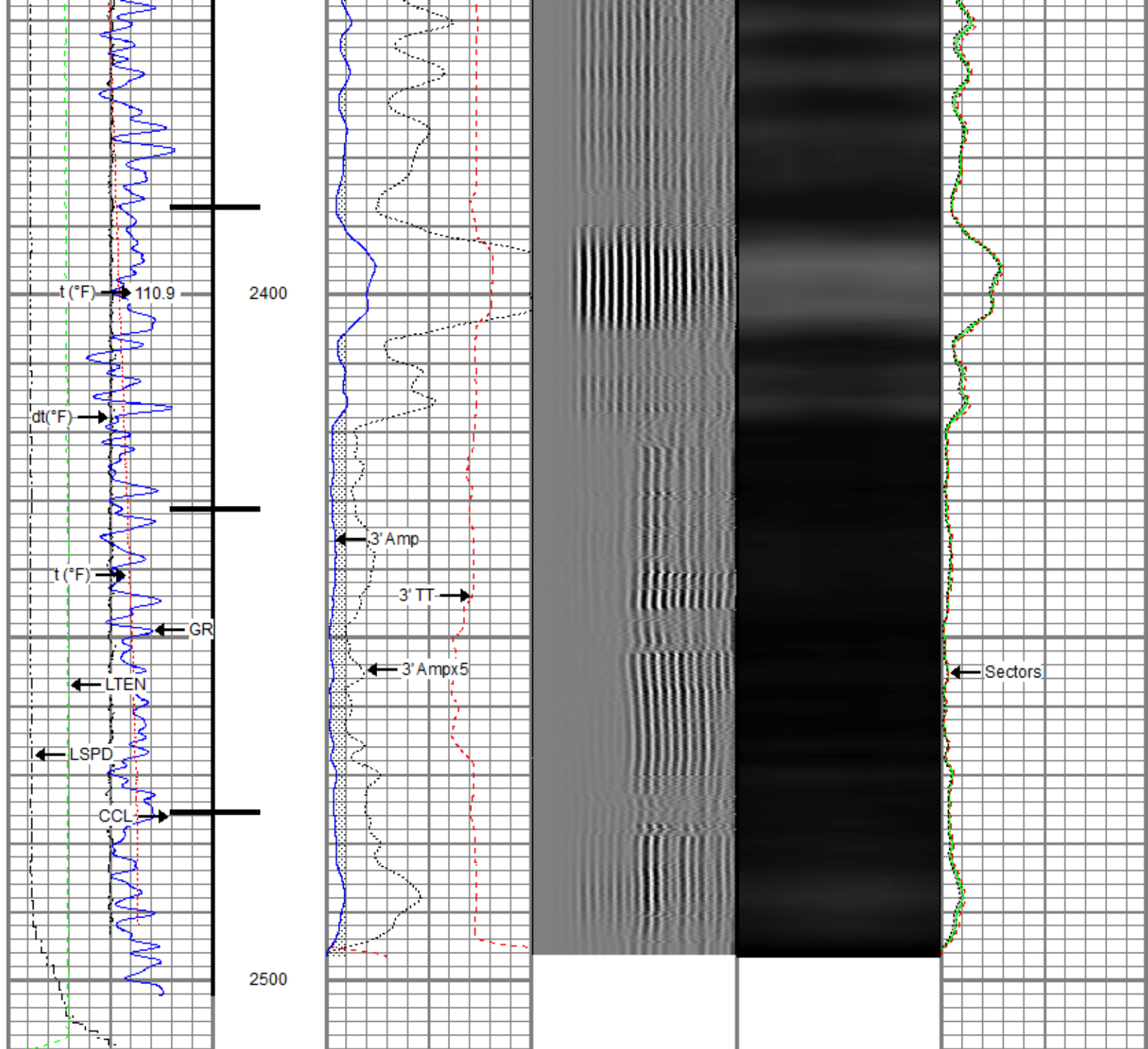












Gamma Ray (GAPI)	0 120	0 3' Amplitude (mV) 100	5' Variable Density Log (usec)	200 1200	Sector Map	0 Average Amplitude 100
Casing Collar Locator		0 3' Amplitude x 5 (mV) 20				Minimum Amplitude
Temperature (degF)	20	0 3' Travel Time (usec) 150				Maximum Amplitude
Line Speed (ft/min)	-150 150					0 100
Line Tension (lb)	2000					
Differential Temperature (degF)	-2 2					

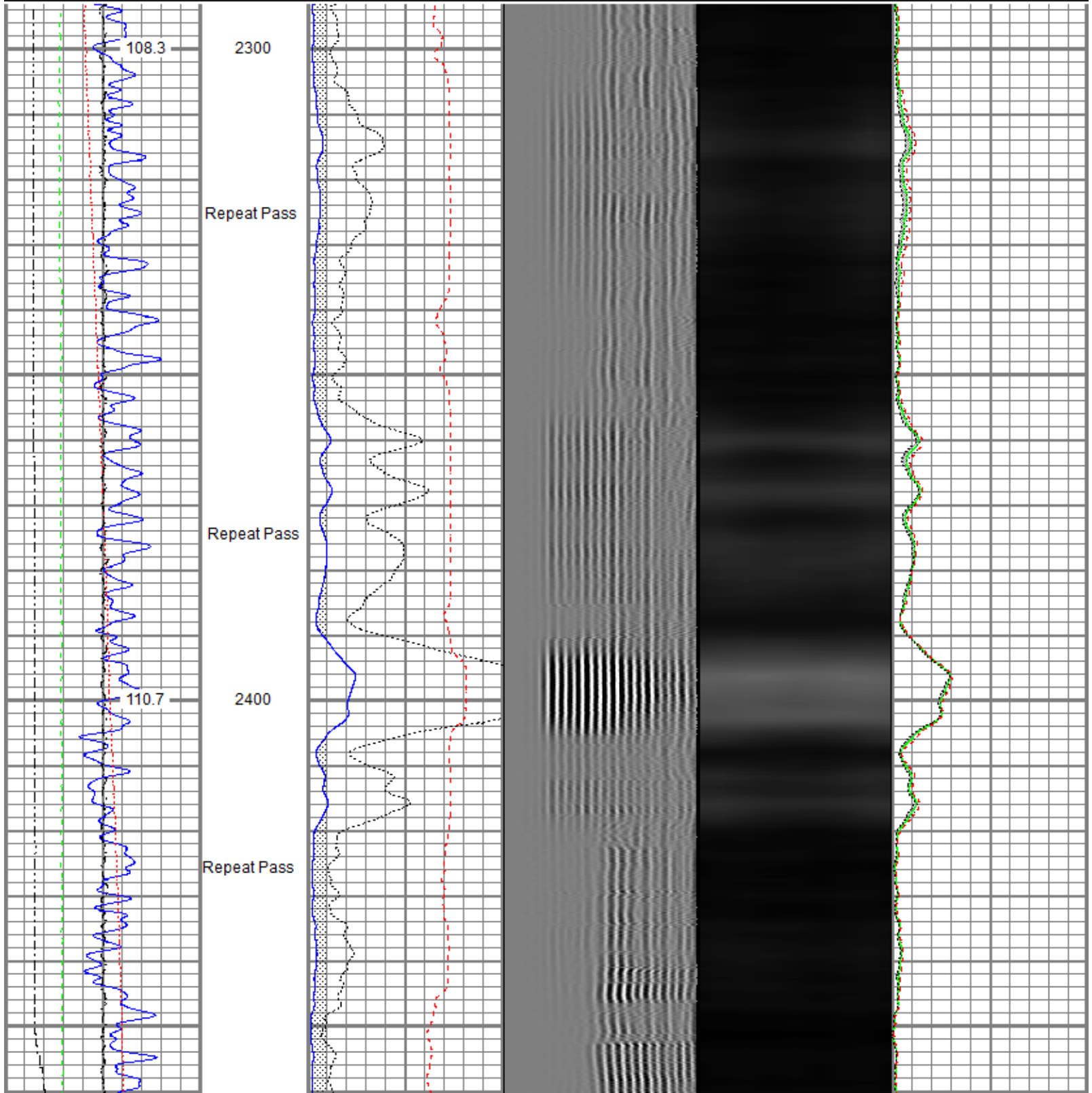
## Repeat Pass

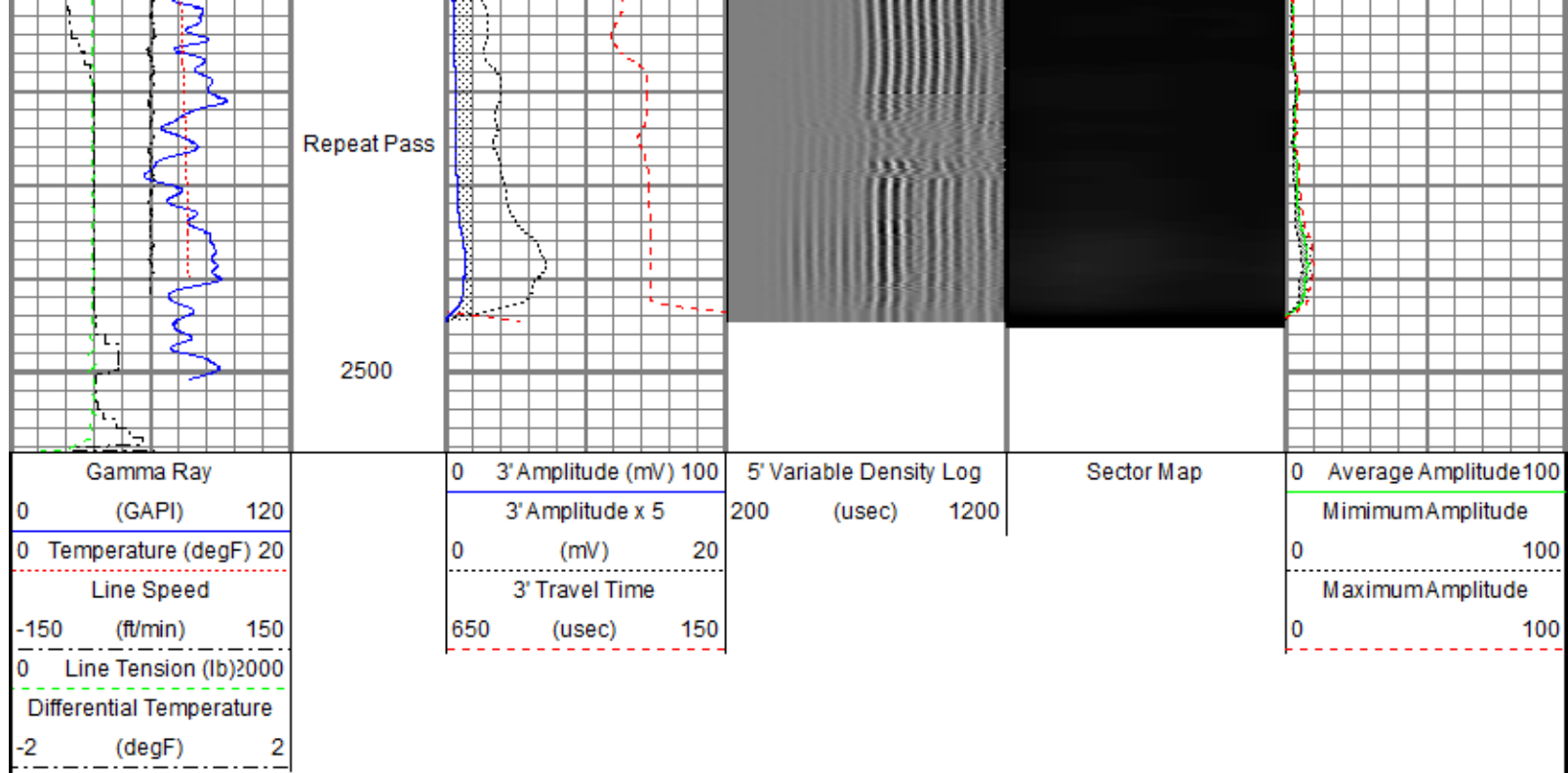


Recorded With 0 PSI Surface Induced Pressure

Database File oxy\0512330696\_oxy\_bella 19-8\_rbl\_02-27-20\processed\_0512330696\_oxy\_bella 19-8\_rbl\_02-27-20.db  
 Dataset Pathname rcb\pass2.2  
 Presentation Format ros\_radrii  
 Dataset Creation Sat Feb 29 09:45:47 2020  
 Charted by Depth in Feet scaled 1:240

Gamma Ray	0	3' Amplitude (mV)	100	5' Variable Density Log	Sector Map	0	Average Amplitude	100
(GAPI)	120	3' Amplitude x 5	200	(usec)			Minimum Amplitude	
Temperature (degF)	20	(mV)	20			0		100
Line Speed		3' Travel Time					Maximum Amplitude	
(ft/min)	150	(usec)	150			0		100
Line Tension (lb)	2000							
Differential Temperature								
(degF)	2							





Sensor	Offset (ft)	Schematic	Description	Length (ft)	O.D. (in)	Weight (lb)	
			Titan CHD-14375 GO Titan 1-7/16" Assembled Electric Cable Head with 1" Fishing Neck	1.03	1.44	3.60	
			Probe CENT-2750 Probe 2-3/4" Electric Inline Bowspring Centralizer	2.88	2.75	20.00	
TEMP	17.04						
WVFS8	14.81			Probe Radii-2750 RBT (FW0712-020) Probe 2-3/4" Radial Cement Bond Tool with Integral Temperature Sub	9.39	2.75	105.00
WVFS7	14.81						
WVFS6	14.81						
WVFS5	14.81						
WVFS4	14.81						
WVFS3	14.81						
WVFS2	14.81						
WVFS1	14.81						
WVFCAL	14.81						
WVF3FT	14.81						
WVF5FT	13.81						
			Probe CENT-2750 Probe 2-3/4" Electric Inline Bowspring Centralizer	2.88	2.75	20.00	

CCL\$2	6.80		Probe GR-CCL-2750 6PB (FW1810-044) Probe 2-3/4" rev.1 Digital Scintillation Gamma Ray/CCL Combined with 6 Pin Bottom for CNT	4.80	2.75	55.00
CCL\$1	6.80					
GR	5.46					
LOCTIM	0.00					
UTCTIM	0.00	Probe CENT-2750 Probe 2-3/4" Electric Inline Bowspring Centralizer	2.88	2.75	20.00	

Dataset: processed\_0512330696\_oxy\_bella 19-8\_rbl\_02-27-20.db: field/well/rcbl/pass4.3  
 Total length: 23.86 ft  
 Total weight: 223.60 lb  
 O.D.: 2.75 in

#### Calibration Report

Database File c:\programdata\warrior\data\oxy\0512330696\_oxy\_bella 19-8\_rbl\_02-27-20\processed\_0512330696\_oxy\_bella 19-8\_rbl\_02-27-20  
 Dataset Pathname rcbl/pass4.3  
 Dataset Creation Sat Feb 29 09:31:18 2020

#### Gamma Ray Calibration Report

Serial Number: FW1810-044  
 Tool Model: 2750 6PB  
 Performed: Tue Dec 03 09:24:53 2019  
 Calibrator Value: 637.0 GAPI  
 Background Reading: 105.3 cps  
 Calibrator Reading: 1221.0 cps  
 Sensitivity: 0.5709 GAPI/cps

#### Segmented Cement Bond Log Calibration Report

Serial Number: FW0712-020  
 Tool Model: 2750 RBT  
 Calibration Casing Diameter: 5.500 in  
 Calibration Depth: 0.000 ft

#### Master Calibration, performed (Derived):

	Raw (v)		Calibrated (mv)		Results	
	Zero	Cal	Zero	Cal	Gain	Offset
3'	0.002	0.578	0.800	81.200	139.774	0.454
CAL	0.003	0.606				
5'	0.005	0.431	0.800	81.200	188.616	-0.108
SUM						
S1	0.003	0.495	0.000	100.000	203.126	-0.645
S2	0.003	0.498	0.000	100.000	202.036	-0.546
S3	-0.003	0.509	0.000	100.000	195.366	0.516
S4	-0.002	0.528	0.000	100.000	188.674	0.385
S5	0.000	0.520	0.000	100.000	199.790	0.904

S5	-0.000	0.530	0.000	100.000	188.706	0.064
S6	0.002	0.512	0.000	100.000	196.163	-0.466
S7	0.001	0.489	0.000	100.000	205.162	-0.288
S8	0.000	0.478	0.000	100.000	209.433	-0.048

Air Zero Calibration, performed Thu Feb 27 11:25:16 2020:

	Raw (v)	Calibrated (v)	Results
	Zero	Zero	Offset
3'	0.009	0.000	-0.006
5'	0.009	0.000	-0.006
SUM			
S1	0.008	0.000	-0.006
S2	0.009	0.000	-0.006
S3	0.012	0.000	-0.009
S4	0.012	0.000	-0.009
S5	0.010	0.000	-0.007
S6	0.009	0.000	-0.006
S7	0.009	0.000	-0.007
S8	0.010	0.000	-0.007

Temperature Calibration Report

Serial Number: FW0712-020  
Tool Model: 2750 RBT  
Performed: Tue Dec 03 09:24:53 2019

	Reference	Reading
Low Reference:	100.00 degF	109.43 degF
High Reference:	350.00 degF	405.87 degF

Gain: 0.84  
Offset: 7.72  
Delta Spacing: 1



**Company** Kerr-McGee Oil & Gas Onshore, L.P.  
**Well** Bella 19-8  
**Field** Wattenberg  
**County** Weld  
**State** Colorado