



Crestone Peak Resources

Schlumberger

Plan 0

Borehole:	Well:	Field:	Structure:
Original Hole	State Massive 5-65 2-3 1CH	CO, Arapahoe County (NAD 83 CZ)	Crestone Peak 02-05S-65W (State Massive 5-65 2-3 Pad)

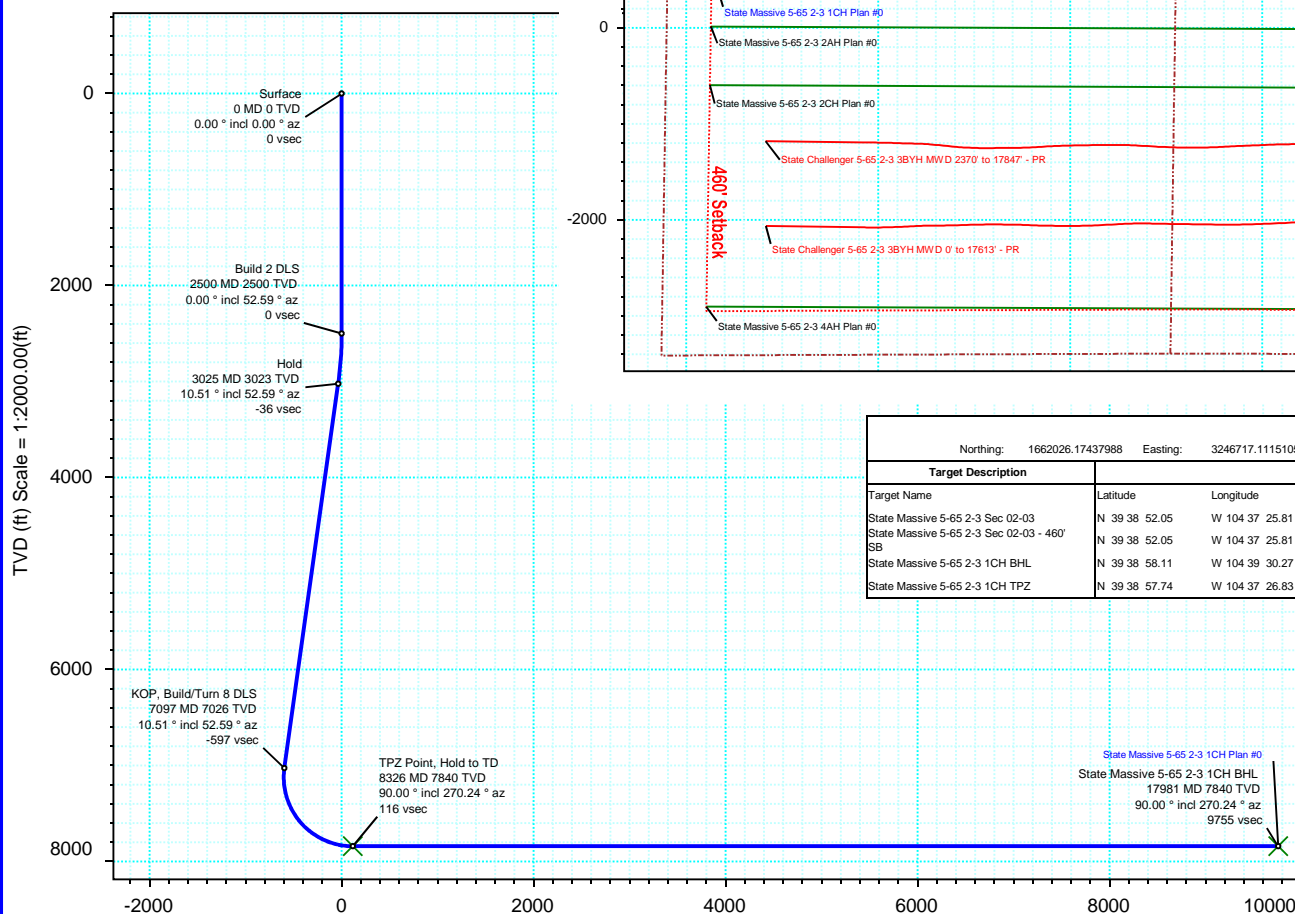
Gravity & Magnetic Parameters			Surface Location			Miscellaneous		
Model:	HDGM 2019	Dip: 66.383°	Date:	19-Mar-2020		State Massive 5-65	TVD Ref:	KB 28ft(5858ft above MSL)
MagDec:	8.549°	FS: 51657.738nT	Gravity FS:	998.902mgn (9.80665 Based)		2-3 1CH	Plan:	State Massive 5-65 2-3 1CH Plan #0
			Lat:	N 39 38 52.05	Northings:	1662026.17ftUS	Grid Conv:	0.5526°
			Lon:	W 104 37 25.81	Easting:	3246717.11ftUS	Scale Fact:	0.99998138

Proposal

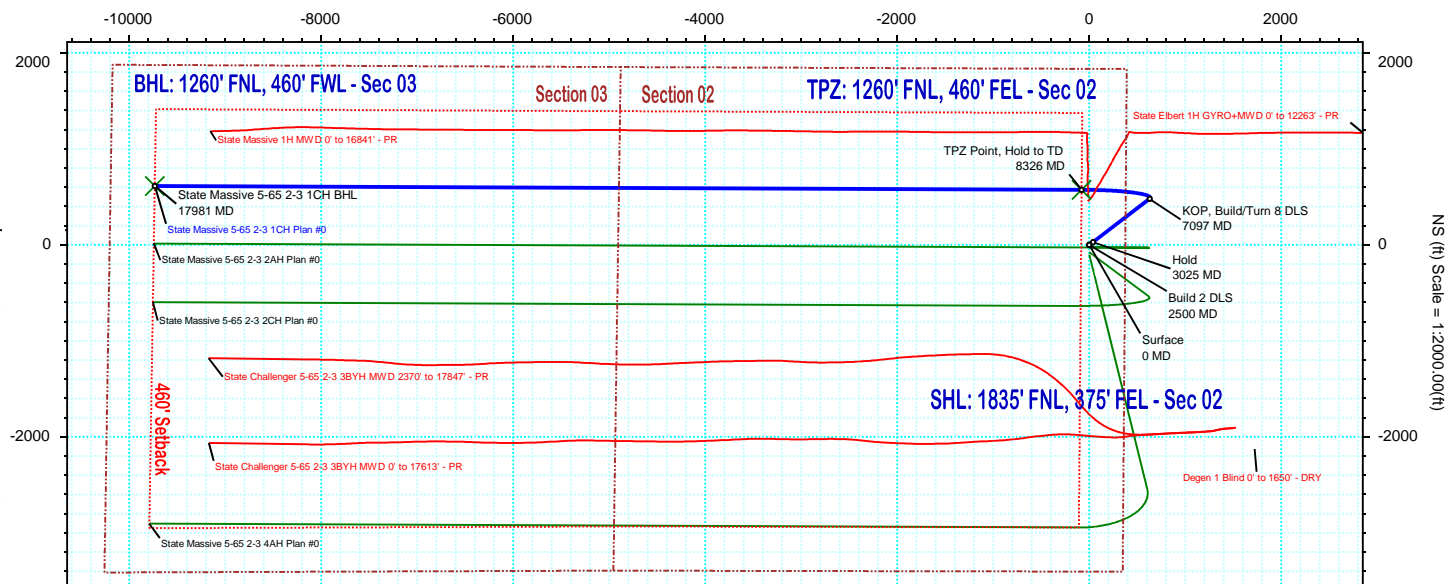
EW (ft) Scale = 1:2000.00(ft)



True North
Tot Corr (M->T 8.549°)
Mag Dec (8.549°)
Grid Conv (0.553°)



Vertical Section (ft) Azim = 273.62° Scale = 1:2000.00(ft) Origin = 0N/-S, 0E/-W



Surface Location										
Northing: 1662026.17437988		Easting: 3246717.11151054		Latitude: N 39 38 52.05		Longitude: W 104 37 25.81		VSec Azimuth: 273.62		
Target Description		Grid Coord						Local Coord		
Target Name		Latitude	Longitude	Northing	Easting	TVD	VSec	N(+)/S(-)	E(+)/W(-)	
State Massive 5-65 2-3 Sec 02-03		N 39 38 52.05	W 104 37 25.81	1662026.17	3246717.11	5858.00	0.00	0.00	0.00	
State Massive 5-65 2-3 Sec 02-03 - 460' SB		N 39 38 52.05	W 104 37 25.81	1662026.17	3246717.11	5858.00	0.00	0.00	0.00	
State Massive 5-65 2-3 1CH BHL		N 39 38 58.11	W 104 39 30.27	1662547.52	3236976.67	7840.00	9754.58	615.27	-9735.16	
State Massive 5-65 2-3 1CH TPZ		N 39 38 57.74	W 104 37 26.83	1662600.90	3246631.31	7840.00	116.40	575.54	-80.25	

Critical Points								
Critical Point	MD	INCL	AZIM	TVD	VSEC	N(+)/S(-)	E(+)/W(-)	DLS
Surface	0.00	0.00	0.00	0.00	0.00	0.00	0.00	
Build 2 DLS	2500.00	0.00	52.59	2500.00	0.00	0.00	0.00	0.00
Hold	3025.49	10.51	52.59	3022.54	-36.26	29.20	38.17	2.00
KOP, Build/Turn 8 DLS	7096.82	10.51	52.59	7025.58	-596.50	480.34	628.05	0.00
TPZ Point, Hold to TD	8325.62	90.00	270.24	7840.00	116.40	575.54	-80.25	8.00
State Massive 5-65 2-3 1CH BHL	17980.61	90.00	270.24	7840.00	9754.58	615.27	-9735.16	0.00

State Massive 5-65 2-3 1CH Plan #0 Proposal Geodetic Report



(Def Plan)

Report Date: March 23, 2020 - 08:35 AM
Client: Crestone Peak Resources
Field: CO, Arapahoe County (NAD 83 CZ)
Structure / Slot: Crestone Peak 02-05S-65W (State Massive 5-65 2-3 Pad) / State Massive 5-65 2-3 1CH
Well: State Massive 5-65 2-3 1CH
Borehole: Original Hole
UWI / API#: Unknown / Unknown
Survey Name: State Massive 5-65 2-3 1CH Plan #0
Survey Date: March 19, 2020
Tort / AHD / DDI / ERD Ratio: 108.814 ° / 11190.203 ft / 6.446 / 1.427
Coordinate Reference System: NAD83 Colorado State Plane, Central Zone, US Feet
Location Lat / Long: N 39° 38' 52.04760", W 104° 37' 25.80600"
Location Grid N/E Y/X: N 1662026.174 ftUS, E 3246717.112 ftUS
CRS Grid Convergence Angle: 0.5526 °
Grid Scale Factor: 0.99998138
Version / Patch: 2.10.787.0

Survey / DLS Computation: Minimum Curvature / Lubinski
Vertical Section Azimuth: 273.616 ° (True North)
Vertical Section Origin: 0.000 ft, 0.000 ft
TVD Reference Datum: KB 28ft
TVD Reference Elevation: 5858.000 ft above MSL
Seabed / Ground Elevation: 5830.000 ft above MSL
Magnetic Declination: 8.549 °
Total Gravity Field Strength: 998.9022mgn (9.80665 Based)
Gravity Model: GARM
Total Magnetic Field Strength: 51657.738 nT
Magnetic Dip Angle: 66.383 °
Declination Date: March 19, 2020
Magnetic Declination Model: HDGM 2019
North Reference: True North
Grid Convergence Used: 0.0000 °
Total Corr Mag North->True North: 8.5487 °

Local Coord Referenced To: Well Head

Comments	MD (ft)	Incl (°)	Azim True (°)	TVD (ft)	TVDSS (ft)	VSEC (ft)	NS (ft)	EW (ft)	DLS (°/100ft)	Northing (ftUS)	Easting (ftUS)	Latitude (°)	Longitude (°)
Surface	0.00	0.00	0.00	0.00	-5858.00	0.00	0.00	0.00	N/A	1662026.17	3246717.11	39.647791	-104.623835
	100.00	0.00	52.59	100.00	-5758.00	0.00	0.00	0.00	0.00	1662026.17	3246717.11	39.647791	-104.623835
	200.00	0.00	52.59	200.00	-5658.00	0.00	0.00	0.00	0.00	1662026.17	3246717.11	39.647791	-104.623835
	300.00	0.00	52.59	300.00	-5558.00	0.00	0.00	0.00	0.00	1662026.17	3246717.11	39.647791	-104.623835
	400.00	0.00	52.59	400.00	-5458.00	0.00	0.00	0.00	0.00	1662026.17	3246717.11	39.647791	-104.623835
	500.00	0.00	52.59	500.00	-5358.00	0.00	0.00	0.00	0.00	1662026.17	3246717.11	39.647791	-104.623835
	600.00	0.00	52.59	600.00	-5258.00	0.00	0.00	0.00	0.00	1662026.17	3246717.11	39.647791	-104.623835
	700.00	0.00	52.59	700.00	-5158.00	0.00	0.00	0.00	0.00	1662026.17	3246717.11	39.647791	-104.623835
	800.00	0.00	52.59	800.00	-5058.00	0.00	0.00	0.00	0.00	1662026.17	3246717.11	39.647791	-104.623835
	900.00	0.00	52.59	900.00	-4958.00	0.00	0.00	0.00	0.00	1662026.17	3246717.11	39.647791	-104.623835
	1000.00	0.00	52.59	1000.00	-4858.00	0.00	0.00	0.00	0.00	1662026.17	3246717.11	39.647791	-104.623835
	1100.00	0.00	52.59	1100.00	-4758.00	0.00	0.00	0.00	0.00	1662026.17	3246717.11	39.647791	-104.623835
	1200.00	0.00	52.59	1200.00	-4658.00	0.00	0.00	0.00	0.00	1662026.17	3246717.11	39.647791	-104.623835
	1300.00	0.00	52.59	1300.00	-4558.00	0.00	0.00	0.00	0.00	1662026.17	3246717.11	39.647791	-104.623835
	1400.00	0.00	52.59	1400.00	-4458.00	0.00	0.00	0.00	0.00	1662026.17	3246717.11	39.647791	-104.623835
	1500.00	0.00	52.59	1500.00	-4358.00	0.00	0.00	0.00	0.00	1662026.17	3246717.11	39.647791	-104.623835
	1600.00	0.00	52.59	1600.00	-4258.00	0.00	0.00	0.00	0.00	1662026.17	3246717.11	39.647791	-104.623835
	1700.00	0.00	52.59	1700.00	-4158.00	0.00	0.00	0.00	0.00	1662026.17	3246717.11	39.647791	-104.623835
	1800.00	0.00	52.59	1800.00	-4058.00	0.00	0.00	0.00	0.00	1662026.17	3246717.11	39.647791	-104.623835
	1900.00	0.00	52.59	1900.00	-3958.00	0.00	0.00	0.00	0.00	1662026.17	3246717.11	39.647791	-104.623835
	2000.00	0.00	52.59	2000.00	-3858.00	0.00	0.00	0.00	0.00	1662026.17	3246717.11	39.647791	-104.623835
	2100.00	0.00	52.59	2100.00	-3758.00	0.00	0.00	0.00	0.00	1662026.17	3246717.11	39.647791	-104.623835
	2200.00	0.00	52.59	2200.00	-3658.00	0.00	0.00	0.00	0.00	1662026.17	3246717.11	39.647791	-104.623835
	2300.00	0.00	52.59	2300.00	-3558.00	0.00	0.00	0.00	0.00	1662026.17	3246717.11	39.647791	-104.623835
2400.00	0.00	52.59	2400.00	-3458.00	0.00	0.00	0.00	0.00	1662026.17	3246717.11	39.647791	-104.623835	
Build 2 DLS	2500.00	0.00	52.59	2500.00	-3358.00	0.00	0.00	0.00	0.00	1662026.17	3246717.11	39.647791	-104.623835
	2600.00	2.00	52.59	2599.98	-3258.02	-1.32	1.06	1.39	2.00	1662027.25	3246718.49	39.647794	-104.623830
	2700.00	4.00	52.59	2699.84	-3158.16	-5.26	4.24	5.54	2.00	1662030.47	3246722.61	39.647803	-104.623815
	2800.00	6.00	52.59	2799.45	-3058.55	-11.84	9.53	12.47	2.00	1662035.83	3246729.48	39.647817	-104.623791
	2900.00	8.00	52.59	2899.70	-2959.30	-21.03	16.94	22.15	2.00	1662043.32	3246739.09	39.647837	-104.623756
	3000.00	10.00	52.59	2997.47	-2860.53	-32.93	26.44	34.57	2.00	1662052.95	3246751.42	39.647864	-104.623712
	3025.49	10.51	52.59	3022.54	-2835.46	-36.26	29.20	38.17	2.00	1662055.74	3246755.00	39.647871	-104.623699
	3100.00	10.51	52.59	3095.81	-2762.19	-46.51	37.45	48.97	0.00	1662064.10	3246765.72	39.647894	-104.623661
	3200.00	10.51	52.59	3194.13	-2663.87	-60.27	48.53	63.46	0.00	1662070.32	3246780.10	39.647924	-104.623610
	3300.00	10.51	52.59	3292.45	-2565.55	-74.03	59.62	77.95	0.00	1662086.54	3246794.48	39.647955	-104.623558
	3400.00	10.51	52.59	3390.78	-2467.22	-87.79	70.70	92.44	0.00	1662097.76	3246808.86	39.647985	-104.623507
	3500.00	10.51	52.59	3489.10	-2368.90	-101.55	81.78	106.92	0.00	1662108.98	3246823.24	39.648016	-104.623455
	3600.00	10.51	52.59	3587.42	-2270.58	-115.31	92.86	121.41	0.00	1662120.20	3246837.62	39.648046	-104.623404
	3700.00	10.51	52.59	3685.74	-2172.26	-129.07	103.94	135.90	0.00	1662131.42	3246852.00	39.648076	-104.623352
	3800.00	10.51	52.59	3784.06	-2073.94	-142.84	115.02	150.39	0.00	1662142.64	3246866.38	39.648107	-104.623301
	3900.00	10.51	52.59	3882.39	-1975.61	-156.60	126.10	164.88	0.00	1662153.86	3246880.76	39.648137	-104.623249
	4000.00	10.51	52.59	3980.71	-1877.29	-170.36	137.18	179.37	0.00	1662165.08	3246895.14	39.648168	-104.623198
	4100.00	10.51	52.59	4079.03	-1778.97	-184.12	148.26	193.86	0.00	1662176.30	3246909.52	39.648198	-104.623147
	4200.00	10.51	52.59	4177.35	-1680.65	-197.88	159.35	208.34	0.00	1662187.52	3246923.90	39.648228	-104.623095
	4300.00	10.51	52.59	4275.68	-1582.32	-211.64	170.43	222.83	0.00	1662198.74	3246938.29	39.648259	-104.623044
	4400.00	10.51	52.59	4374.00	-1484.00	-225.40	181.51	237.32	0.00	1662209.96	3246952.67	39.648289	-104.622992
	4500.00	10.51	52.59	4472.32	-1385.68	-239.16	192.59	251.81	0.00	1662221.18	3246967.05	39.648320	-104.622941
	4600.00	10.51	52.59	4570.64	-1287.36	-252.92	203.67	266.30	0.00	1662232.40	3246981.43	39.648350	-104.622889
	4700.00	10.51	52.59	4668.97	-1189.03	-266.68	214.75	280.79	0.00	1662243.62	3246995.81	39.648381	-104.622838
4800.00	10.51	52.59	4767.29	-1090.71	-280.44	225.83	295.27	0.00	1662254.84	3247010.19	39.648411	-104.622786	
4900.00	10.51	52.59	4865.61	-992.39	-294.20	236.91	309.76	0.00	1662266.06	3247024.57	39.648441	-104.622735	
5000.00	10.51	52.59	4963.93	-894.07	-307.96	247.99	324.25	0.00	1662277.28	3247038.95	39.648472	-104.622684	
5100.00	10.51	52.59	5062.26	-795.74	-321.72	259.07	338.74	0.00	1662288.50	3247053.33	39.648502	-104.622632	
5200.00	10.51	52.59	5160.58	-697.42	-335.49	270.16	353.23	0.00	1662299.72	3247067.71	39.648533	-104.622581	
5300.00	10.51	52.59	5258.90	-599.10	-349.25	281.24	367.72	0.00	1662310.94	3247082.09	39.648563	-104.622529	
5400.00	10.51	52.59	5357.22	-500.78	-363.01	292.32	382.21	0.00	1662322.16	3247096.47	39.648593	-104.622478	
5500.00	10.51	52.59	5455.55	-402.45	-376.77	303.40	396.69	0.00	1662333.38	3247110.85	39.648624	-104.622426	
5600.00	10.51	52.59	5553.87	-304.13	-390.53	314.48	411.18	0.00	1662344.60	3247125.23	39.648654	-104.622375	
5700.00	10.51	52.59	5652.19	-205.81	-404.29	325.56	425.67	0.00	1662355.82	3247139.61	39.648685	-104.622323	
5800.00	10.51	52.59	5750.51	-107.49	-418.05	336.64	440.16	0.00	1662367.04	3247153.99	39.648715	-104.622272	
5900.00	10.51	52.59	5848.84	-9.16	-431.81	347.72	454.65	0.00	1662378.26	3247168.38	39.648746	-104.622220	
6000.00	10.51	52.59	5947.16	89.16	-445.57	358.80	469.14	0.00	1662389.48	3247182.76	39.648776	-104.622169	
6100.00	10.51	52.59	6045.48	187.48	-459.33	369.88	483.63	0.00	1662400.70	3247197.14	39.648806	-104.622118	
6200.00	10.51	52.59	6143.80	285.80	-473.09	380.97	498.11	0.00	1662411.92	3247211.52	39.648837	-104.622066	
6300.00	10.51	52.59	6242.12	384.12	-486.85	392.05	512.60	0.00	1662423.14	3247225.90	39.648867	-104.622015	
6400.00	10.51	52.59	6340.45	482.45	-500.61	403.13	527.09	0.00	1662434.36	3247240.28	39.648898	-104.621963	
6500.00	10.51	52.59	6438.77	580.77	-514.37	414.21	541.58	0.00	1662445.58	3247254.66	39.648928	-104.621912	
6600.00	10.51	52.59	6537.09	679.09	-528.13	425.29	556.07	0.00	1662456.80	3247269.04	39.648959	-104.621860	
6700.00	10.51	52.59	6635.41	777.41	-541.90	436.37	570.56	0.00	1662468.02	3247283.42	39.648989	-104.621809	
6800.00	10.51	52.59	6733.74	875.74	-555.66	447.45	585.04	0.00	1662479.24	3247297.80	39.649019	-104.621757	
6900.00	10.51	52.59	6832.06	974.06	-569.42	458.53	595.53	0.00	1662490.46	3247312.18	39.649050		

Comments	MD (ft)	Incl (°)	Azim True (°)	TVD (ft)	TVDSS (ft)	VSEC (ft)	NS (ft)	EW (ft)	DLS (°/100ft)	Northing (ftUS)	Easting (ftUS)	Latitude (°)	Longitude (°)
TPZ Point, Hold to TD	8300.00	87.96	270.47	7839.54	1981.54	90.82	575.38	-54.64	8.00	1662600.99	3246656.93	39.649371	-104.624029
	8325.62	90.00	270.24	7840.00	1982.00	116.40	575.54	-80.25	8.00	1662600.90	3246631.31	39.649371	-104.624120
	8400.00	90.00	270.24	7840.00	1982.00	190.65	575.84	-154.63	0.00	1662600.49	3246556.94	39.649372	-104.624384
	8500.00	90.00	270.24	7840.00	1982.00	290.47	576.26	-254.63	0.00	1662599.94	3246456.94	39.649373	-104.624739
	8600.00	90.00	270.24	7840.00	1982.00	390.30	576.67	-354.63	0.00	1662599.38	3246356.94	39.649374	-104.625094
	8700.00	90.00	270.24	7840.00	1982.00	490.13	577.08	-454.63	0.00	1662598.83	3246256.93	39.649375	-104.625450
	8800.00	90.00	270.24	7840.00	1982.00	589.95	577.49	-554.63	0.00	1662598.28	3246156.95	39.649376	-104.625805
	8900.00	90.00	270.24	7840.00	1982.00	689.78	577.90	-654.63	0.00	1662597.72	3246056.95	39.649377	-104.626160
	9000.00	90.00	270.24	7840.00	1982.00	789.60	578.31	-754.63	0.00	1662597.17	3245956.96	39.649379	-104.626515
	9100.00	90.00	270.24	7840.00	1982.00	889.43	578.73	-854.63	0.00	1662596.62	3245856.96	39.649380	-104.626870
	9200.00	90.00	270.24	7840.00	1982.00	989.25	579.14	-954.63	0.00	1662596.07	3245756.96	39.649381	-104.627225
	9300.00	90.00	270.24	7840.00	1982.00	1089.08	579.55	-1054.63	0.00	1662595.51	3245656.97	39.649382	-104.627580
	9400.00	90.00	270.24	7840.00	1982.00	1188.91	579.96	-1154.62	0.00	1662594.96	3245556.97	39.649383	-104.627935
	9500.00	90.00	270.24	7840.00	1982.00	1288.73	580.37	-1254.62	0.00	1662594.41	3245456.97	39.649384	-104.628290
	9600.00	90.00	270.24	7840.00	1982.00	1388.56	580.78	-1354.62	0.00	1662593.85	3245356.98	39.649385	-104.628646
	9700.00	90.00	270.24	7840.00	1982.00	1488.38	581.19	-1454.62	0.00	1662593.30	3245256.98	39.649386	-104.629001
	9800.00	90.00	270.24	7840.00	1982.00	1588.21	581.61	-1554.62	0.00	1662592.75	3245156.99	39.649388	-104.629356
	9900.00	90.00	270.24	7840.00	1982.00	1688.04	582.02	-1654.62	0.00	1662592.20	3245056.99	39.649389	-104.629711
	10000.00	90.00	270.24	7840.00	1982.00	1787.86	582.43	-1754.62	0.00	1662591.64	3244956.99	39.649390	-104.630066
	10100.00	90.00	270.24	7840.00	1982.00	1887.69	582.84	-1854.62	0.00	1662591.09	3244857.00	39.649391	-104.630421
	10200.00	90.00	270.24	7840.00	1982.00	1987.51	583.25	-1954.62	0.00	1662590.54	3244757.00	39.649392	-104.630776
	10300.00	90.00	270.24	7840.00	1982.00	2087.34	583.66	-2054.62	0.00	1662589.98	3244657.00	39.649393	-104.631131
	10400.00	90.00	270.24	7840.00	1982.00	2187.17	584.08	-2154.62	0.00	1662589.43	3244557.01	39.649394	-104.631487
	10500.00	90.00	270.24	7840.00	1982.00	2286.99	584.49	-2254.62	0.00	1662588.88	3244457.01	39.649395	-104.631842
	10600.00	90.00	270.24	7840.00	1982.00	2386.82	584.90	-2354.61	0.00	1662588.33	3244357.01	39.649396	-104.632197
	10700.00	90.00	270.24	7840.00	1982.00	2486.64	585.31	-2454.61	0.00	1662587.77	3244257.02	39.649398	-104.632552
	10800.00	90.00	270.24	7840.00	1982.00	2586.47	585.72	-2554.61	0.00	1662587.22	3244157.02	39.649399	-104.632907
	10900.00	90.00	270.24	7840.00	1982.00	2686.30	586.13	-2654.61	0.00	1662586.67	3244057.02	39.649400	-104.633262
	11000.00	90.00	270.24	7840.00	1982.00	2786.12	586.55	-2754.61	0.00	1662586.11	3243957.03	39.649401	-104.633617
	11100.00	90.00	270.24	7840.00	1982.00	2885.95	586.96	-2854.61	0.00	1662585.56	3243857.03	39.649402	-104.633972
	11200.00	90.00	270.24	7840.00	1982.00	2985.77	587.37	-2954.61	0.00	1662585.01	3243757.04	39.649403	-104.634328
	11300.00	90.00	270.24	7840.00	1982.00	3085.60	587.78	-3054.61	0.00	1662584.46	3243657.04	39.649404	-104.634683
	11400.00	90.00	270.24	7840.00	1982.00	3185.43	588.19	-3154.61	0.00	1662583.90	3243557.04	39.649405	-104.635038
	11500.00	90.00	270.24	7840.00	1982.00	3285.25	588.60	-3254.61	0.00	1662583.35	3243457.05	39.649406	-104.635393
	11600.00	90.00	270.24	7840.00	1982.00	3385.08	589.01	-3354.61	0.00	1662582.80	3243357.05	39.649407	-104.635748
	11700.00	90.00	270.24	7840.00	1982.00	3484.90	589.43	-3454.61	0.00	1662582.24	3243257.05	39.649408	-104.636103
	11800.00	90.00	270.24	7840.00	1982.00	3584.73	589.84	-3554.60	0.00	1662581.69	3243157.06	39.649410	-104.636458
	11900.00	90.00	270.24	7840.00	1982.00	3684.56	590.25	-3654.60	0.00	1662581.14	3243057.06	39.649411	-104.636813
	12000.00	90.00	270.24	7840.00	1982.00	3784.38	590.66	-3754.60	0.00	1662580.58	3242957.06	39.649412	-104.637169
	12100.00	90.00	270.24	7840.00	1982.00	3884.21	591.07	-3854.60	0.00	1662580.03	3242857.07	39.649413	-104.637524
	12200.00	90.00	270.24	7840.00	1982.00	3984.03	591.48	-3954.60	0.00	1662579.48	3242757.07	39.649414	-104.637879
	12300.00	90.00	270.24	7840.00	1982.00	4083.86	591.90	-4054.60	0.00	1662578.93	3242657.08	39.649415	-104.638234
	12400.00	90.00	270.24	7840.00	1982.00	4183.69	592.31	-4154.60	0.00	1662578.37	3242557.08	39.649416	-104.638589
	12500.00	90.00	270.24	7840.00	1982.00	4283.51	592.72	-4254.60	0.00	1662577.82	3242457.08	39.649417	-104.638944
	12600.00	90.00	270.24	7840.00	1982.00	4383.34	593.13	-4354.60	0.00	1662577.27	3242357.09	39.649418	-104.639299
	12700.00	90.00	270.24	7840.00	1982.00	4483.16	593.54	-4454.60	0.00	1662576.72	3242257.09	39.649419	-104.639654
	12800.00	90.00	270.24	7840.00	1982.00	4582.99	593.95	-4554.60	0.00	1662576.16	3242157.09	39.649420	-104.640009
	12900.00	90.00	270.24	7840.00	1982.00	4682.82	594.36	-4654.60	0.00	1662575.61	3242057.10	39.649422	-104.640365
	13000.00	90.00	270.24	7840.00	1982.00	4782.64	594.78	-4754.59	0.00	1662575.06	3241957.10	39.649423	-104.640720
	13100.00	90.00	270.24	7840.00	1982.00	4882.47	595.19	-4854.59	0.00	1662574.50	3241857.10	39.649424	-104.641075
	13200.00	90.00	270.24	7840.00	1982.00	4982.29	595.60	-4954.59	0.00	1662573.95	3241757.11	39.649425	-104.641430
	13300.00	90.00	270.24	7840.00	1982.00	5082.12	596.01	-5054.59	0.00	1662573.40	3241657.11	39.649426	-104.641785
	13400.00	90.00	270.24	7840.00	1982.00	5181.95	596.42	-5154.59	0.00	1662572.85	3241557.11	39.649427	-104.642140
	13500.00	90.00	270.24	7840.00	1982.00	5281.77	596.83	-5254.59	0.00	1662572.29	3241457.12	39.649428	-104.642495
	13600.00	90.00	270.24	7840.00	1982.00	5381.60	597.25	-5354.59	0.00	1662571.74	3241357.12	39.649429	-104.642850
	13700.00	90.00	270.24	7840.00	1982.00	5481.42	597.66	-5454.59	0.00	1662571.19	3241257.13	39.649430	-104.643206
	13800.00	90.00	270.24	7840.00	1982.00	5581.25	598.07	-5554.59	0.00	1662570.63	3241157.13	39.649431	-104.643561
	13900.00	90.00	270.24	7840.00	1982.00	5681.08	598.48	-5654.59	0.00	1662570.08	3241057.13	39.649432	-104.643916
	14000.00	90.00	270.24	7840.00	1982.00	5780.90	598.89	-5754.59	0.00	1662569.53	3240957.14	39.649433	-104.644271
	14100.00	90.00	270.24	7840.00	1982.00	5880.73	599.30	-5854.59	0.00	1662568.98	3240857.14	39.649434	-104.644626
	14200.00	90.00	270.24	7840.00	1982.00	5980.55	599.71	-5954.58	0.00	1662568.42	3240757.14	39.649435	-104.644981
	14300.00	90.00	270.24	7840.00	1982.00	6080.38	600.13	-6054.58	0.00	1662567.87	3240657.15	39.649437	-104.645336
	14400.00	90.00	270.24	7840.00	1982.00	6180.21	600.54	-6154.58	0.00	1662567.32	3240557.15	39.649438	-104.645691
	14500.00	90.00	270.24	7840.00	1982.00	6280.03	600.95	-6254.58	0.00	1662566.76	3240457.15	39.649439	-104.646047
	14600.00	90.00	270.24	7840.00	1982.00	6379.86	601.36	-6354.58	0.00	1662566.21	3240357.16	39.649440	-104.646402
	14700.00	90.00	270.24	7840.00	1982.00	6479.68	601.77	-6454.58	0.00	1662565.66	3240257.16	39.649441	-104.646757
	14800.00	90.00	270.24	7840.00	1982.00	6579.51	602.18	-6554.58	0.00	1662565.10	3240157.16	39.649442	-104.647112
	14900.00	90.00	270.24	7840.00	1982.00	6679.34	602.60	-6654.58	0.00	1662564.55	3240057.17	39.649443	-104.647467
	15000.00	90.00	270.24	7840.00	1982.00	6779.16	603.01	-6754.58	0.00	1662564.00	3239957.17	39.649444	-104.647822
	15100.00	90.00	270.24	7840.00	1982.00	6878.99	603.42	-6854.58	0.00	1662563.45	3239857.18	39.649445	-104.648177
	15200.00	90.00	270.24	7840.00	1982.00	6978.81	603.83	-6954.58	0.00	1662562.89	3239757.18	39.649446	-104.648532
	15300.00	90.00	270.24	7840.00	1982.00	7078.64	604.24	-7054.57	0.00	1662562.34	3239657.18	39.649447	

Comments	MD (ft)	Incl (°)	Azim True (°)	TVD (ft)	TVDSS (ft)	VSEC (ft)	NS (ft)	EW (ft)	DLS (°/100ft)	Northing (ftUS)	Easting (ftUS)	Latitude (°)	Longitude (°)
		1	2200.000	17980.609	1/100.000	8.500	5.500		NAL_MWD_PLUS_0.5_DEG		Original Hole / State Massive 5-65 2-3 1CH Plan #0		