

LINE TABLE		
LINE	DIRECTION	LENGTH
L1	N08°11'00"W	580.99'

CERTIFICATION

THIS IS TO CERTIFY THAT THE ABOVE PLAT WAS PREPARED FROM FIELD NOTES OF ACTUAL SURVEYS MADE BY ME OR UNDER MY SUPERVISION AND THAT THE SAME ARE TRUE AND CORRECT TO THE BEST OF MY KNOWLEDGE AND BELIEF.

REGISTERED LAND SURVEYOR
REGISTRATION NO. 28285
STATE OF COLORADO

APPROVAL LAND SURVEYOR

PDOP = 1.2

REV: 3 03-13-20 J.U. (TPZ & BHI MOVE, UPDATE WELLS & COMPANY NAME)

LEGEND:

- = PROPOSED WELLHEAD.
- ◆ = TOP PRODUCTION ZONE.
- = TARGET BOTTOM HOLE.
- ▲ = SECTION CORNERS LOCATED. (NAD 83)
- △ = SECTION CORNERS RE-ESTABLISHED. (Not Set on Ground.) (NAD 83)

NOTE:
DISTANCES REFERENCED ON PLAT TO SECTION LINES ARE PERPENDICULAR.

NAD 83 (SURFACE LOCATION)	NAD 83 (TOP PRODUCTION ZONE)	NAD 83 (TARGET BOTTOM HOLE)
LATITUDE = 39°38'52.05" (39.647791°)	LATITUDE = 39°38'57.73" (39.649371°)	LATITUDE = 39°38'58.11" (39.649475°)
LONGITUDE = 104°37'25.81" (104.623835°)	LONGITUDE = 104°37'26.83" (104.624120°)	LONGITUDE = 104°39'30.26" (104.658407°)
NAD 27 (SURFACE LOCATION)	NAD 27 (TOP PRODUCTION ZONE)	NAD 27 (TARGET BOTTOM HOLE)
LATITUDE = 39°38'52.10" (39.647804°)	LATITUDE = 39°38'57.78" (39.649384°)	LATITUDE = 39°38'58.16" (39.649488°)
LONGITUDE = 104°37'23.92" (104.623311°)	LONGITUDE = 104°37'24.95" (104.623596°)	LONGITUDE = 104°39'28.37" (104.657882°)
STATE PLANE NAD 83 (CO. CEN.)	STATE PLANE NAD 83 (CO. CEN.)	STATE PLANE NAD 83 (CO. CEN.)
N: 1662026.33' E: 3246717.04'	N: 1662600.80' E: 3246631.22'	N: 1662547.63' E: 3236976.74'
STATE PLANE NAD 27 (CO. CEN.)	STATE PLANE NAD 27 (CO. CEN.)	STATE PLANE NAD 27 (CO. CEN.)
N: 662019.16' E: 2246870.97'	N: 662593.62' E: 2246785.15'	N: 662540.28' E: 2237130.75'



UELS, LLC
Corporate Office * 85 South 200 East
Vernal, UT 84078 * (435) 789-1017

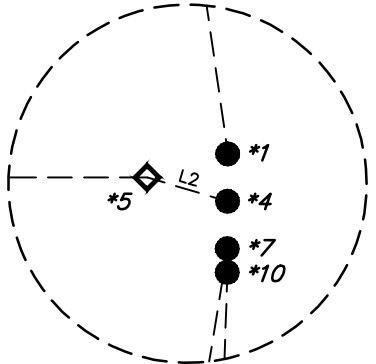
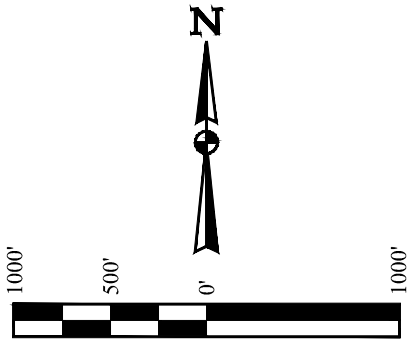
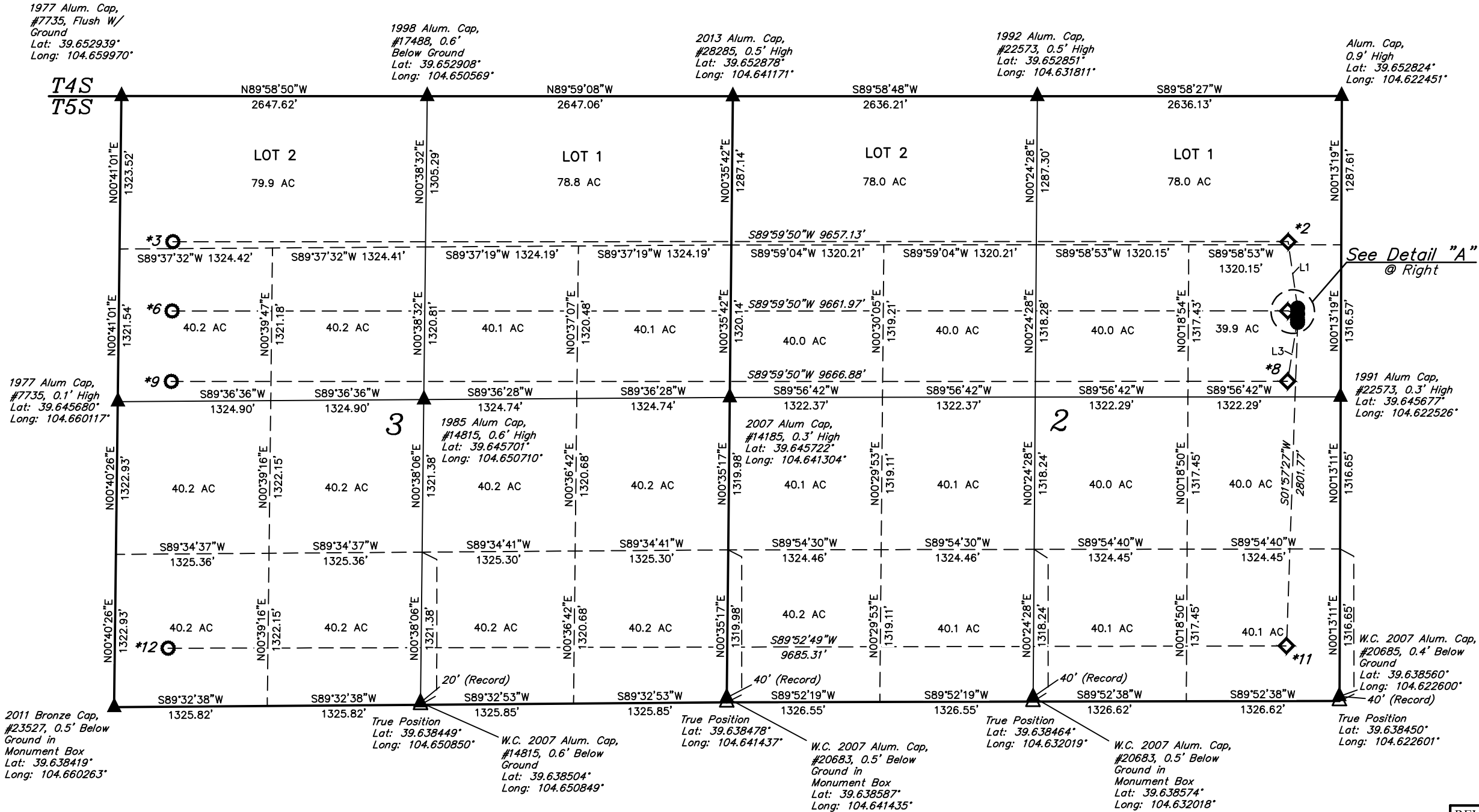
SURVEYED BY	CHAD MEIERS, A.K.	03-22-18	SCALE
DRAWN BY	C.IVIE	03-29-18	1" = 1000'

WELL LOCATION PLAT

STATE MASSIVE #5-65 2-3 1CH, 2AH, 2CH & 4AH
SE 1/4 NE 1/4, SECTION 2, T5S, R65W, 6th P.M.
ARAPAHOE COUNTY, COLORADO

BASIS OF BEARINGS
TRANSVERSE MERCATOR PROJECTION WITH A CENTRAL MERIDIAN OF W105°00'00".
BASIS OF ELEVATION
OPUS SOLUTION GENERATED NAVD 88

LINE TABLE		
LINE	DIRECTION	LENGTH
L1	N08°11'00"W	580.99'
L2	N73°32'04"W	88.49'
L3	S09°14'24"W	541.95'



Detail "A"
No Scale

CERTIFICATE
THIS IS TO CERTIFY THAT THE ABOVE MAP WAS PREPARED FROM FIELD NOTES OF ACTUAL SURVEYS MADE BY ME OR UNDER MY SUPERVISION AND THAT THE SAME ARE TRUE AND CORRECT TO THE BEST OF MY KNOWLEDGE AND BELIEF.

REGISTERED LAND SURVEYOR
REGISTRATION NO. 28285
STATE OF COLORADO
04-29-20

LEGEND:
● = PROPOSED WELLHEAD.
◆ = TOP PRODUCTION ZONE.
○ = TARGET BOTTOM HOLE.
▲ = SECTION CORNERS LOCATED. (NAD 83)
△ = SECTION CORNERS RE-ESTABLISHED. (Not Set on Ground.) (NAD 83)

WELL	SURFACE LOCATION	TOP PRODUCTION ZONE	TARGET BOTTOM HOLE
1CH	*1 1835' FNL 375' FEL	*2 1260' FNL 460' FEL	*3 1260' FNL 460' FWL
2AH	*4 1885' FNL 375' FEL	*5 1860' FNL 460' FEL	*6 1860' FNL 460' FWL
2CH	*7 1935' FNL 375' FEL	*8 2470' FNL 460' FEL	*9 2470' FNL 460' FWL
4AH	*10 1960' FNL 375' FEL	*11 478' FSL 460' FEL	*12 507' FSL 460' FWL

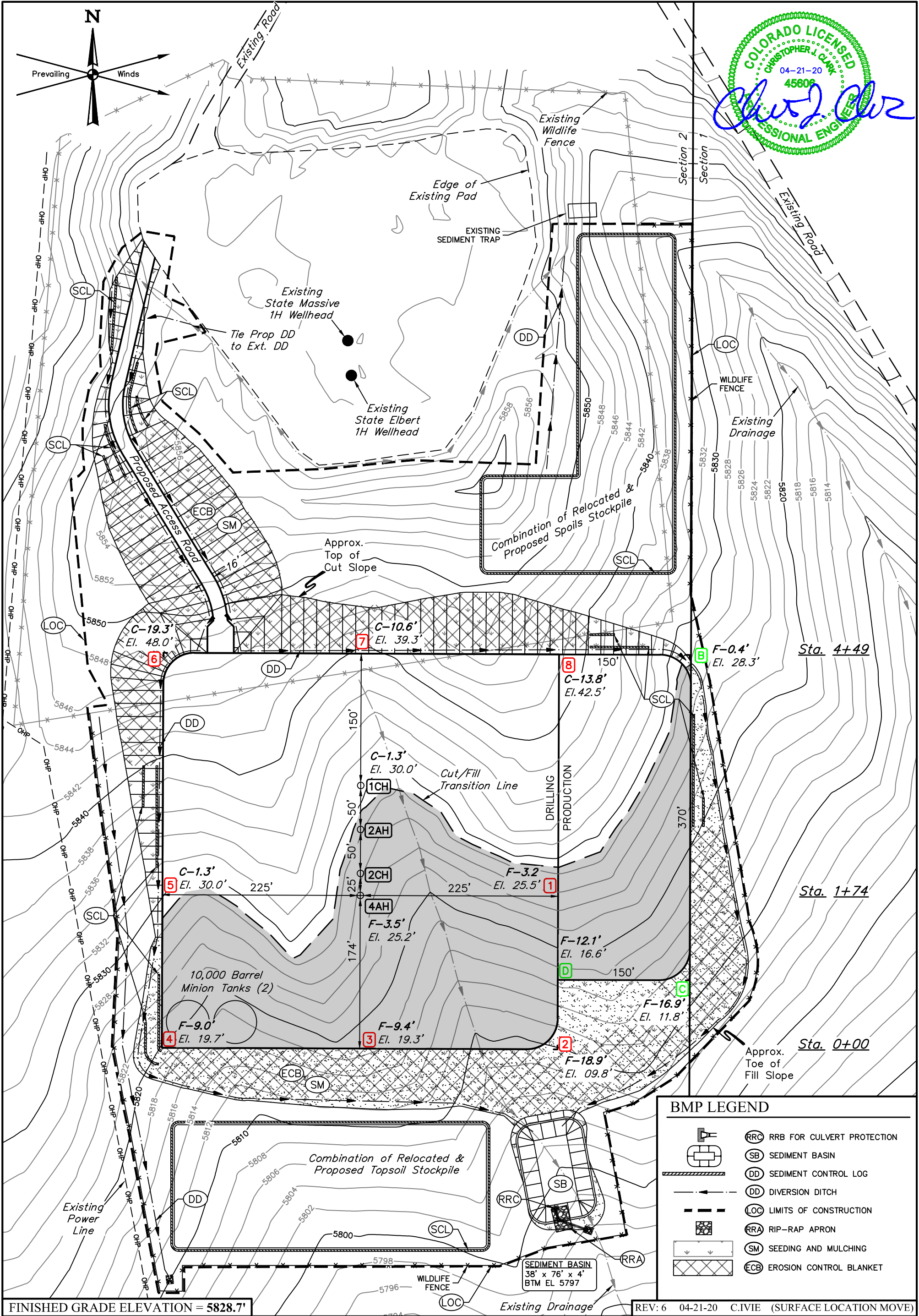
UINTEAH
ENGINEERING & LAND SURVEYING

UELS, LLC
Corporate Office * 85 South 200 East
Vernal, UT 84078 * (435) 789-1017

SURVEYED BY	CHAD MEIERS, A.K.	03-22-18	SCALE
DRAWN BY	C.IVIE	03-29-18	1" = 1000'

SECTION BREAK DOWN

REV: 5 04-23-20 C.IVIE (4AH TOP PRODUCTION ZONE MOVE)



FINISHED GRADE ELEVATION = 5828.7'

- NOTES:**
- Round corners at 35' radius or as needed.
 - Contours shown at 2' intervals.
 - Shown Cut/Fills do NOT include the 6" pad gravel finish.
 - Access road & pad re-design was not engineered by Uintah Engineering & Land Surveying.



UELS, LLC
Corporate Office * 85 South 200 East
Vernal, UT 84078 * (435) 789-1017

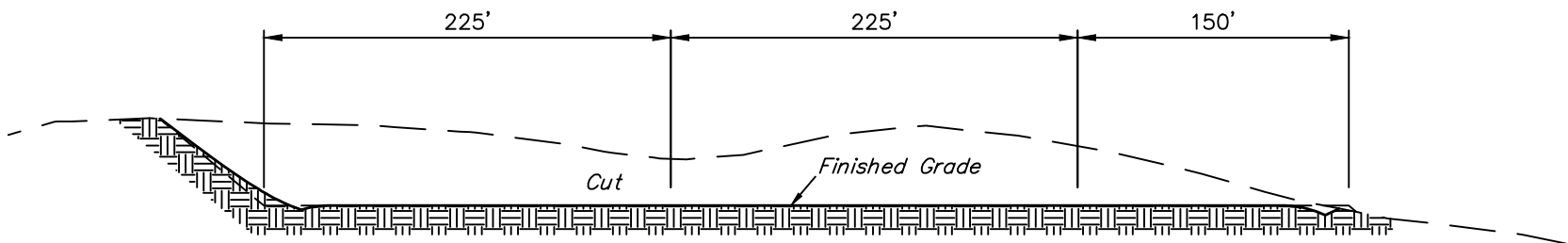
CRESTONE PEAK RESOURCES OPERATING LLC

STATE MASSIVE #5-65 2-3 1CH, 2AH, 2CH & 4AH
SE 1/4 NE 1/4, SECTION 2, T5S, R65W, 6th P.M.
ARAPAHOE COUNTY, COLORADO

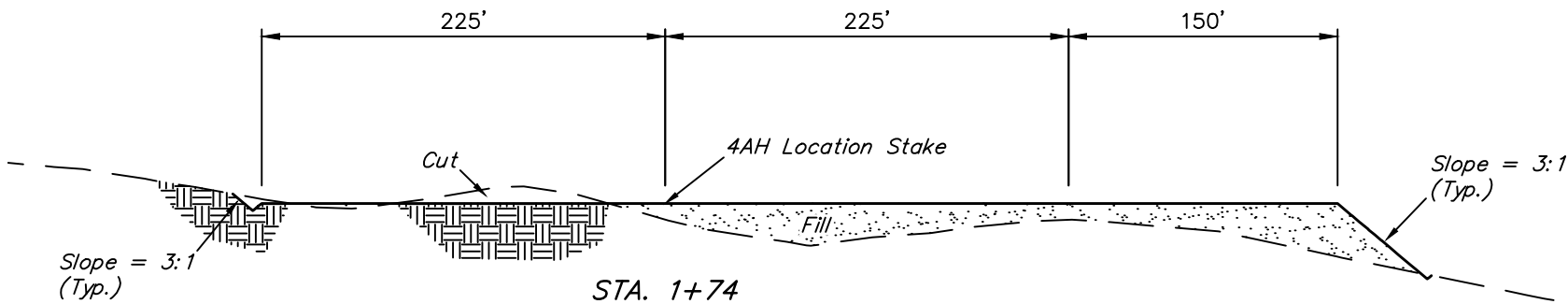
SURVEYED BY	CHAD MEIERS, A.K.	03-22-18	SCALE
DRAWN BY	PH	07-27-18	1" = 100'

CONSTRUCTION LAYOUT **FIGURE #1**

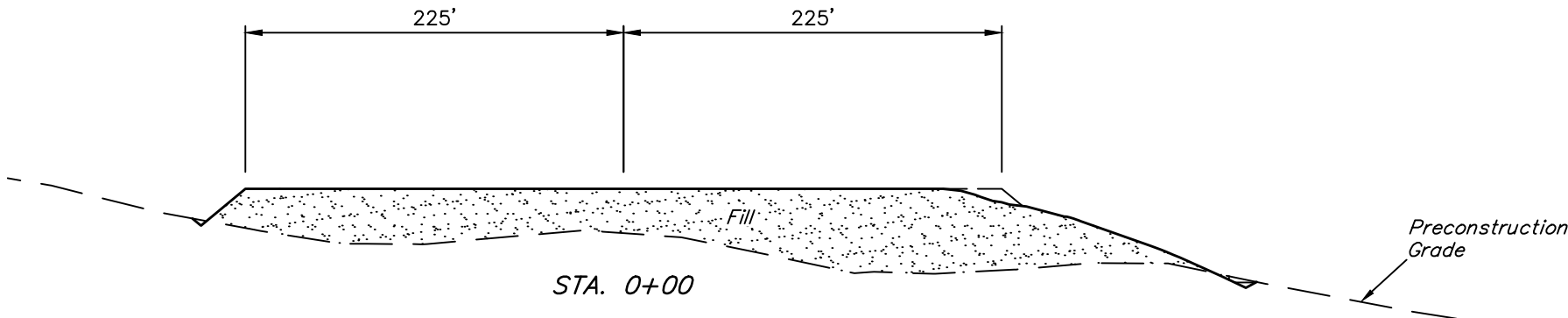
1" = 40'
X-Section
Scale
1" = 100'



STA. 4+49



STA. 1+74



STA. 0+00

APPROXIMATE EARTHWORK QUANTITIES	
(6") TOPSOIL STRIPPING	7,820 Cu. Yds.
REMAINING LOCATION	60,340 Cu. Yds.
TOTAL CUT	68,160 Cu. Yds.
FILL	59,780 Cu. Yds.
EXCESS MATERIAL	8,380 Cu. Yds.
TOPSOIL	7,820 Cu. Yds.
EXCESS UNBALANCE (After Interim Rehabilitation)	560 Cu. Yds.

APPROXIMATE SURFACE DISTURBANCE AREAS		
	DISTANCE	ACRES
TOTAL COMBINED WELL SITE DISTURBANCE	NA	-
& ACCESS ROAD R-O-W DISTURBANCE	±494'	-
TOTAL SURFACE USE AREA		±15.584

REV: 6 04-21-20 C.IVIE (SURFACE LOCATION MOVE)

- NOTES:**
- Fill quantity includes 6" pad gravel surfacing (5,830 CY)
 - Fill quantity includes 10% for compaction.
 - Calculations based on 6" of topsoil stripping.

CRESTONE PEAK RESOURCES OPERATING LLC

**STATE MASSIVE #5-65 2-3 1CH, 2AH, 2CH & 4AH
SE 1/4 NE 1/4, SECTION 2, T5S, R65W, 6th P.M.
ARAPAHOE COUNTY, COLORADO**



UELS, LLC
Corporate Office * 85 South 200 East
Vernal, UT 84078 * (435) 789-1017

SURVEYED BY	CHAD MEIERS, A.K.	03-22-18	SCALE
DRAWN BY	PH	07-27-18	AS SHOWN
CONSTRUCTION LAYOUT CROSS SECTIONS			FIGURE #2



LEGEND:
Reclaimed Area

APPROXIMATE UN-RECLAIMED ACREAGE = ±13.128 ACRES
APPROXIMATE RECLAIMED ACREAGE = ±3.589 ACRES
TOTAL ACREAGE = ±16.717 ACRES

NOTES:
• Contours shown at 2' intervals.

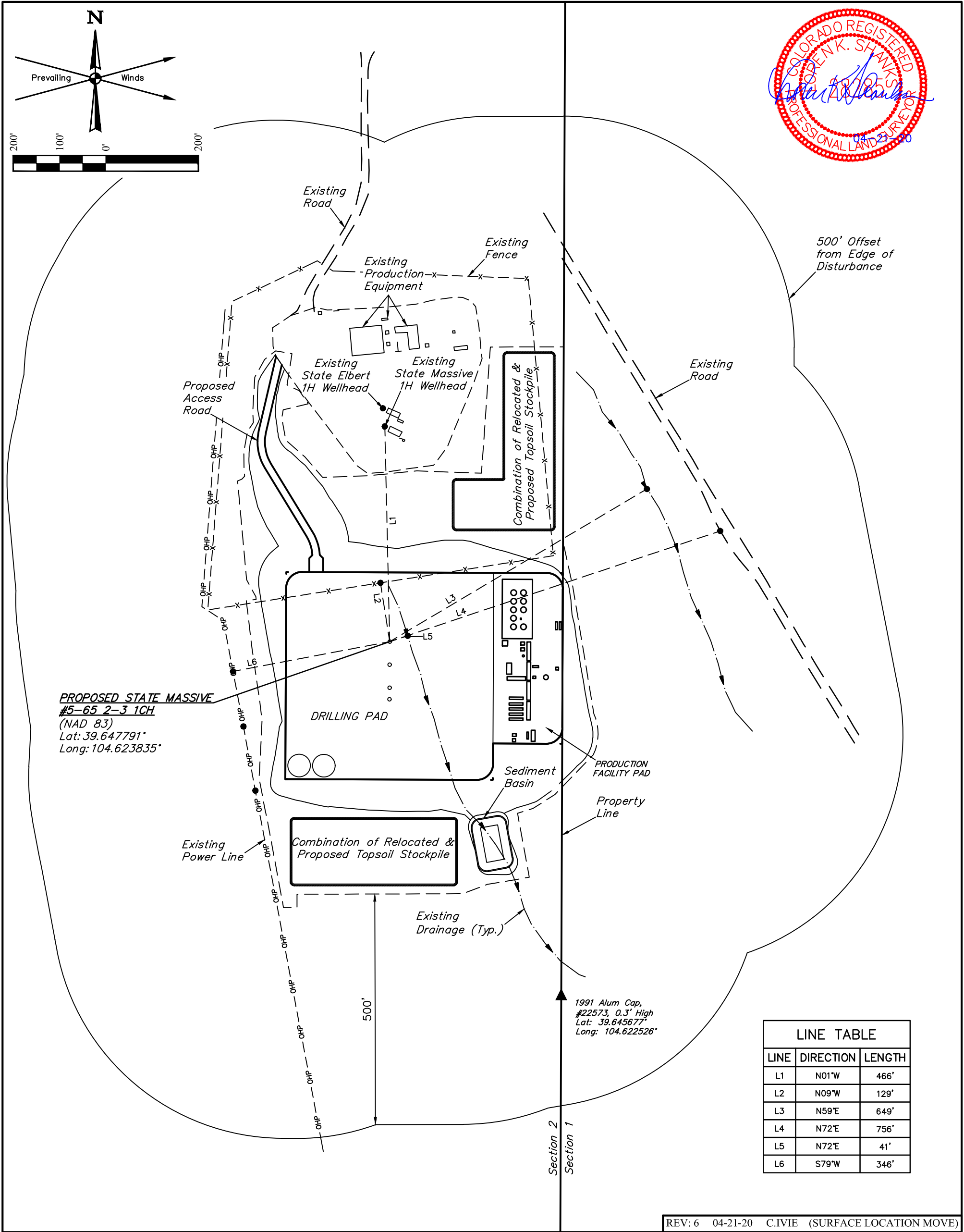
CRESTONE PEAK RESOURCES OPERATING LLC

STATE MASSIVE #5-65 2-3 1CH, 2AH, 2CH & 4AH
SE 1/4 NE 1/4, SECTION 2, T5S, R65W, 6th P.M.
ARAPAHOE COUNTY, COLORADO

SURVEYED BY	CHAD MEIERS, A.K.	03-22-18	SCALE
DRAWN BY	C.IVIE	03-29-18	1" = 100'
INTERIM RECLAMATION PLAN			FIGURE #3



UELS, LLC
Corporate Office * 85 South 200 East
Vernal, UT 84078 * (435) 789-1017



PLANT COMMUNITY

☐ DISTURBED GRASSLAND

☒ NATIVE GRASSLAND

☐ SHRUB LAND

☐ PLAINS RIPARIAN

☐ MOUNTAIN RIPARIAN

☐ FOREST LAND

☐ WETLANDS AQUATIC

☐ ALPINE

☐ OTHER (Describe): _____

CURRENT LAND USE

CROP LAND:	<input type="checkbox"/> IRRIGATED	<input type="checkbox"/> DRY LAND	<input type="checkbox"/> IMPROVED PASTURE	<input type="checkbox"/> HAY MEADOW	<input type="checkbox"/> CRP
NON-CROP LAND:	<input checked="" type="checkbox"/> RANGELAND	<input type="checkbox"/> TIMBER	<input type="checkbox"/> RECREATIONAL	<input type="checkbox"/> OTHER (Describe) _____	
SUBDIVIDED:	<input type="checkbox"/> INDUSTRIAL	<input type="checkbox"/> COMMERCIAL	<input type="checkbox"/> RESIDENTIAL		

FUTURE LAND USE

CROP LAND:	<input type="checkbox"/> IRRIGATED	<input type="checkbox"/> DRY LAND	<input type="checkbox"/> IMPROVED PASTURE	<input type="checkbox"/> HAY MEADOW	<input type="checkbox"/> CRP
NON-CROP LAND:	<input type="checkbox"/> RANGELAND	<input type="checkbox"/> TIMBER	<input type="checkbox"/> RECREATIONAL	<input type="checkbox"/> OTHER (Describe) _____	
SUBDIVIDED:	<input type="checkbox"/> INDUSTRIAL	<input type="checkbox"/> COMMERCIAL	<input type="checkbox"/> RESIDENTIAL		

CRESTONE PEAK RESOURCES OPERATING LLC

**STATE MASSIVE #5-65 2-3 1CH, 2AH, 2CH & 4AH
SE 1/4 NE 1/4, SECTION 2, T5S, R65W, 6th P.M.
ARAPAHOE COUNTY, COLORADO**

SURVEYED BY	CHAD MEIERS, A.K.	03-22-18	SCALE
DRAWN BY	C.IVIE	03-29-18	1" = 200'
LOCATION DRAWING		FIGURE #4	



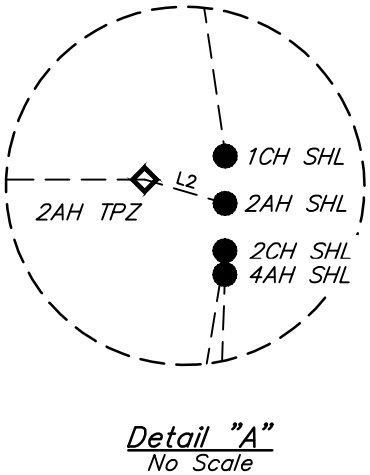
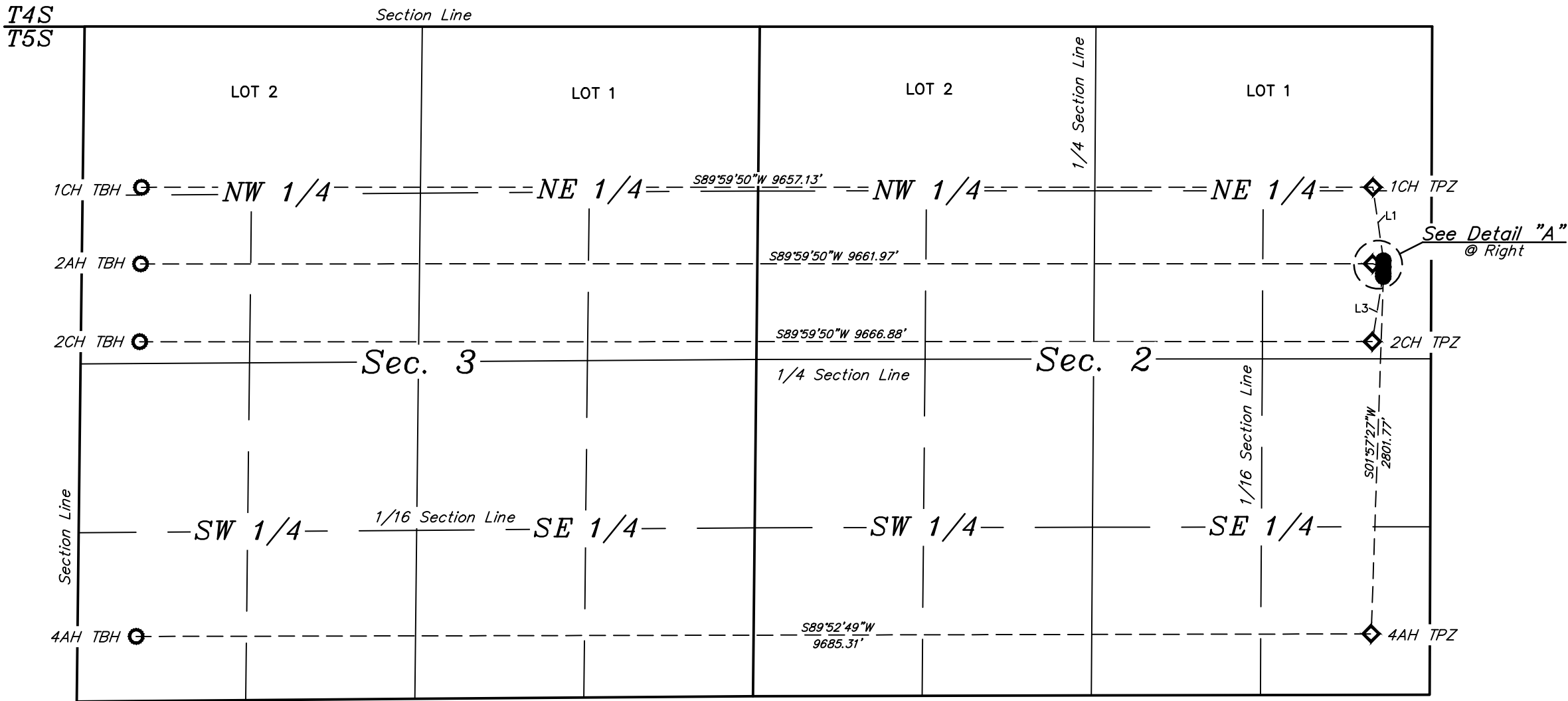
UELS, LLC
Corporate Office * 85 South 200 East
Vernal, UT 84078 * (435) 789-1017



LEGEND:

- = SURFACE LOCATION.
- ◆ = TOP PRODUCTION ZONE.
- = TARGET BOTTOM HOLE.
- SHL= SURFACE HOLE LOCATION.
- TPZ = TOP PRODUCTION ZONE.
- TBH = TARGET BOTTOM HOLE.

LINE TABLE		
LINE	DIRECTION	LENGTH
L1	N08°11'00"W	580.99'
L2	N73°32'04"W	88.49'
L3	S09°14'24"W	541.95'



REV: 5 04-23-20 C.IVIE (4AH TOP PRODUCTION ZONE MOVE)

CRESTONE PEAK RESOURCES OPERATING LLC

STATE MASSIVE #5-65 2-3 1CH, 2AH, 2CH & 4AH
SE 1/4 NE 1/4, SECTION 2, T5S, R65W, 6th P.M.
ARAPAHOE COUNTY, COLORADO

SURVEYED BY	CHAD MEIERS, A.K.	03-22-18	SCALE
DRAWN BY	C.IVIE	03-29-18	1" = 1000'

MULTI-WELL PLAN

FIGURE #5



UELS, LLC
Corporate Office * 85 South 200 East
Vernal, UT 84078 * (435) 789-1017

CRESTONE PEAK RESOURCES OPERATING LLC
STATE MASSIVE #5-65 2-3 1CH, 2AH, 2CH & 4AH
SE 1/4 NE 1/4 SECTION 2, T5S, R65W, 6th P.M.
ARAPAHOE COUNTY, COLORADO
DATE: 03-30-18 C.IVIE
REV: 5 04-21-20 C.IVIE (SURFACE LOCATION MOVE)

DISTANCES FROM WELLHEAD																						
WELL NAME	BUILDING		BUILDING UNIT		HIGH OCCU. BUILDING		D.O.A.A.		PUBLIC ROAD		ABOVE GROUND UTILITY		RAILROAD		PROPERTY LINE		CHILD CARE FACILITY		SCHOOL FACILITY		SCHOOL PROPERTY LINE	
	DIRECTION	LENGTH	DIRECTION	LENGTH	DIRECTION	LENGTH	DIRECTION	LENGTH	DIRECTION	LENGTH	DIRECTION	LENGTH	DIRECTION	LENGTH	DIRECTION	LENGTH	DIRECTION	LENGTH	DIRECTION	LENGTH	DIRECTION	LENGTH
STATE MASSIVE #5-65 2-3 1CH	OVER 1 MILE		OVER 1 MILE		OVER 1 MILE		OVER 1 MILE		OVER 1 MILE		S79°W	346'	OVER 1 MILE		EAST	375'	OVER 1 MILE		OVER 1 MILE		OVER 1 MILE	
STATE MASSIVE #5-65 2-3 2AH	OVER 1 MILE		OVER 1 MILE		OVER 1 MILE		OVER 1 MILE		OVER 1 MILE		S79°W	336'	OVER 1 MILE		EAST	375'	OVER 1 MILE		OVER 1 MILE		OVER 1 MILE	
STATE MASSIVE #5-65 2-3 2CH	OVER 1 MILE		OVER 1 MILE		OVER 1 MILE		OVER 1 MILE		OVER 1 MILE		S79°W	327'	OVER 1 MILE		EAST	375'	OVER 1 MILE		OVER 1 MILE		OVER 1 MILE	
STATE MASSIVE #5-65 2-3 4AH	OVER 1 MILE		OVER 1 MILE		OVER 1 MILE		OVER 1 MILE		OVER 1 MILE		S79°W	322'	OVER 1 MILE		EAST	375'	OVER 1 MILE		OVER 1 MILE		OVER 1 MILE	

DISTANCES FROM PRODUCTION EQUIPMENT																						
PRODUCTION FEATURE	BUILDING		BUILDING UNIT		HIGH OCCU. BUILDING		D.O.A.A.		PUBLIC ROAD		ABOVE GROUND UTILITY		RAILROAD		PROPERTY LINE		CHILD CARE FACILITY		SCHOOL FACILITY		SCHOOL PROPERTY LINE	
	DIRECTION	LENGTH	DIRECTION	LENGTH	DIRECTION	LENGTH	DIRECTION	LENGTH	DIRECTION	LENGTH	DIRECTION	LENGTH	DIRECTION	LENGTH	DIRECTION	LENGTH	DIRECTION	LENGTH	DIRECTION	LENGTH	DIRECTION	LENGTH
PRODUCTION EQUIPMENT	OVER 1 MILE		OVER 1 MILE		OVER 1 MILE		OVER 1 MILE		OVER 1 MILE		S79°W	568'	OVER 1 MILE		EAST	4'	OVER 1 MILE		OVER 1 MILE		OVER 1 MILE	

