

Inspection Photos
Location Name: Ward DP 1-12 Pad
Location ID: 447748



Photo 1: Wellhead sign

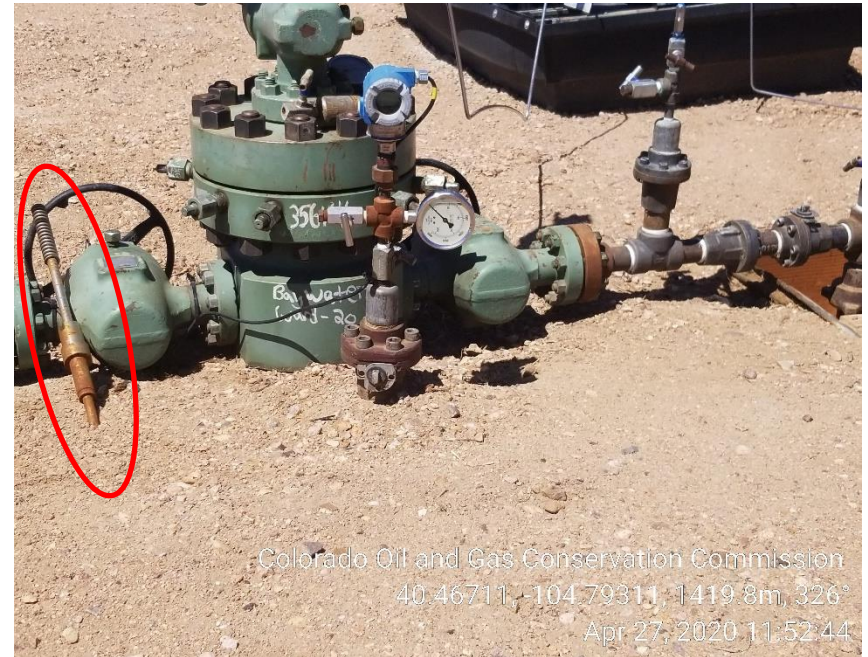


Photo 2: Stained soil removed; Unused equipment



Inspection Photos
Location Name: Ward DP 1-12 Pad
Location ID: 447748



Photo 3: Wellhead Sign



Photo 4: Stained soil removed

Inspection Photos
Location Name: Ward DP 1-12 Pad
Location ID: 447748



Photo 5: Unused equipment



Photo 6: Wellhead Sign

Inspection Photos
Location Name: Ward DP 1-12 Pad
Location ID: 447748



Photo 7: Stained soil

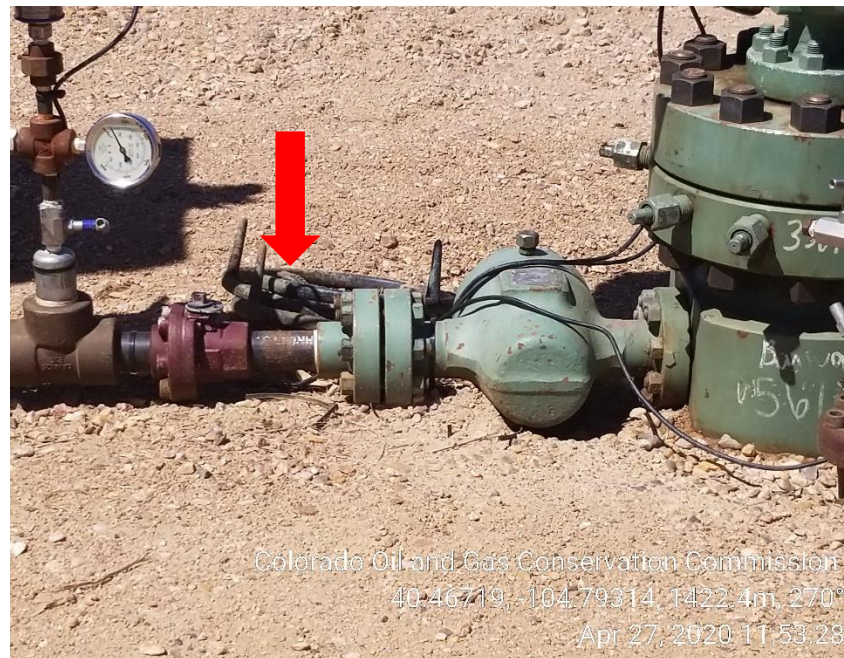


Photo 8: Unused equipment

Inspection Photos
Location Name: Ward DP 1-12 Pad
Location ID: 447748

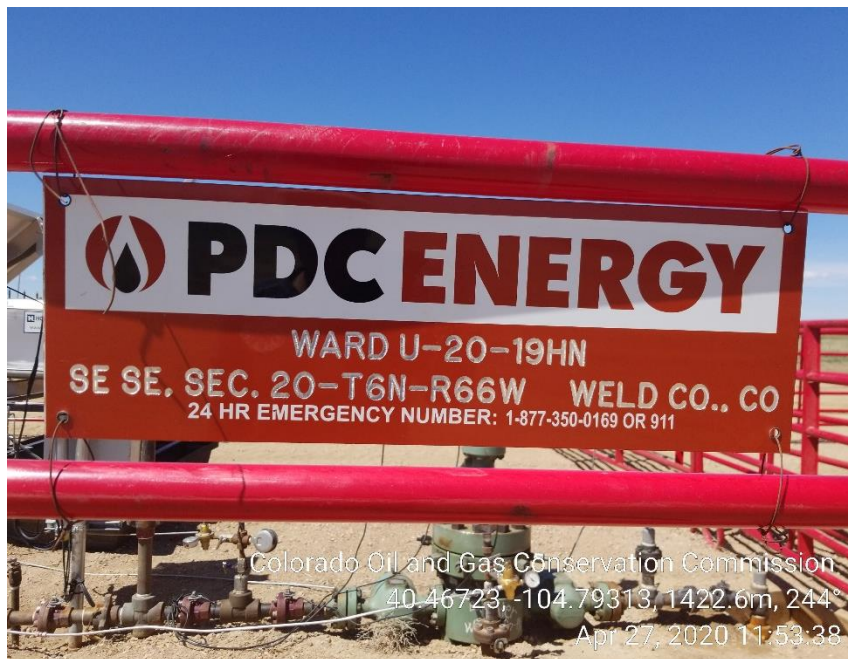


Photo 9: Wellhead Sign



Photo 10: Stained soil

Inspection Photos
Location Name: Ward DP 1-12 Pad
Location ID: 447748

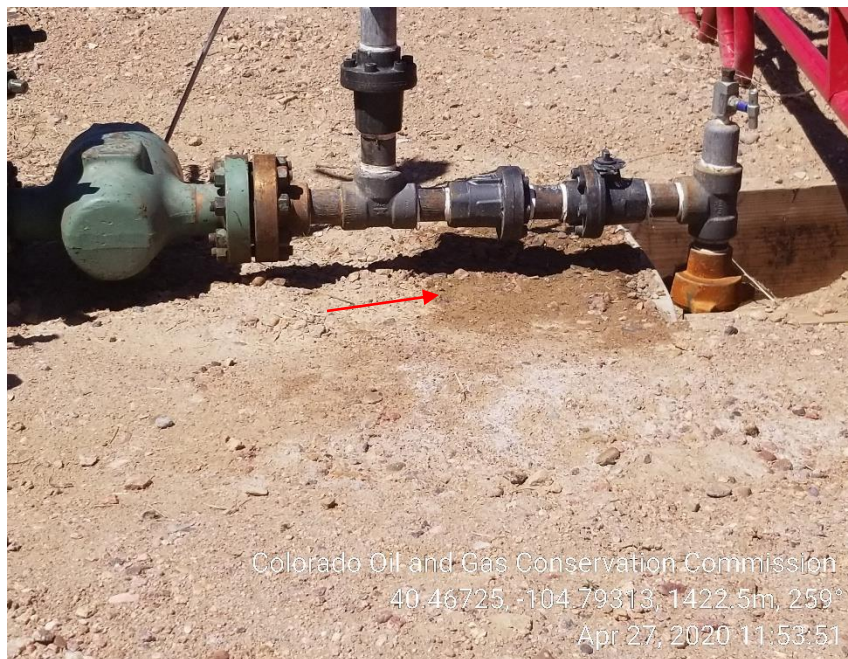


Photo 11: Stained soil



Photo 12: Wellhead Sign

Inspection Photos
Location Name: Ward DP 1-12 Pad
Location ID: 447748

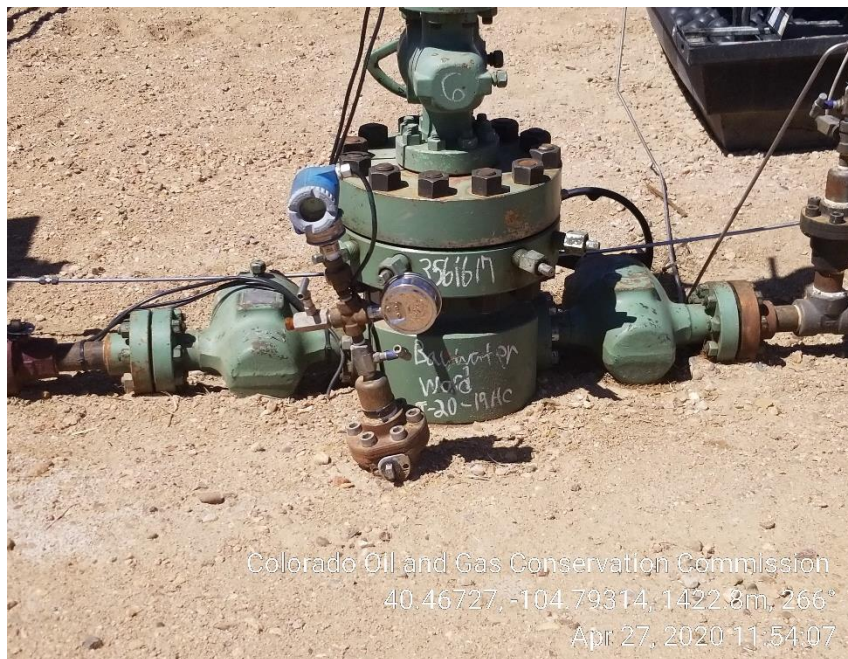


Photo 13: Stained soil removed



Photo 14: Wellhead Sign

Inspection Photos
Location Name: Ward DP 1-12 Pad
Location ID: 447748



Photo 15: Stained soil removed



Photo 16: Wellhead Sign



Inspection Photos
Location Name: Ward DP 1-12 Pad
Location ID: 447748



Photo 17: Stained soil removed



Photo 18: Unused equipment

Inspection Photos
Location Name: Ward DP 1-12 Pad
Location ID: 447748



Photo 19: Wellhead Sign



Photo 20: Stained soil removed

Inspection Photos
Location Name: Ward DP 1-12 Pad
Location ID: 447748



Photo 21: Wellhead Sign



Photo 22: Stained soil removed



Inspection Photos
Location Name: Ward DP 1-12 Pad
Location ID: 447748



Photo 23: Wellhead Sign

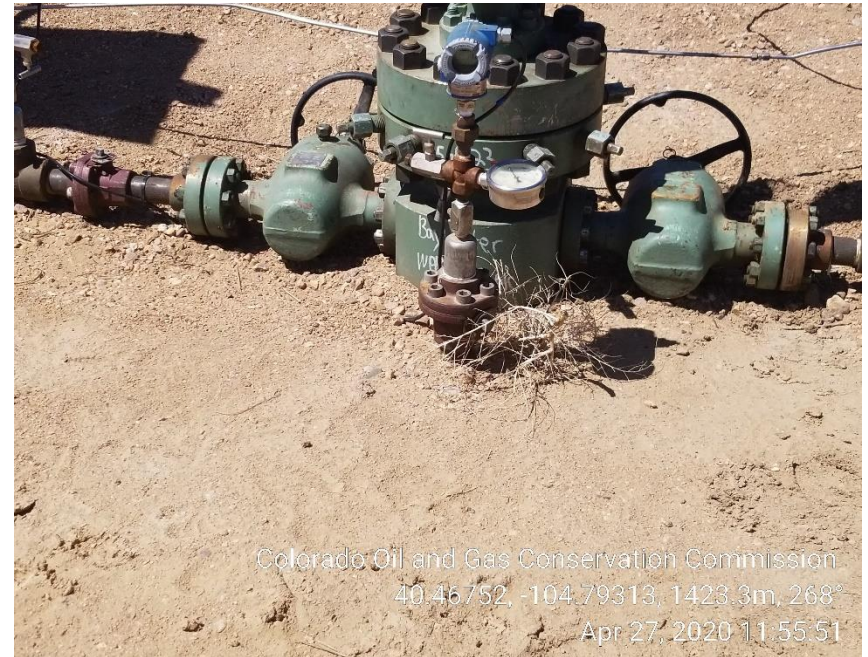


Photo 24: Stained soil removed



Inspection Photos
Location Name: Ward DP 1-12 Pad
Location ID: 447748

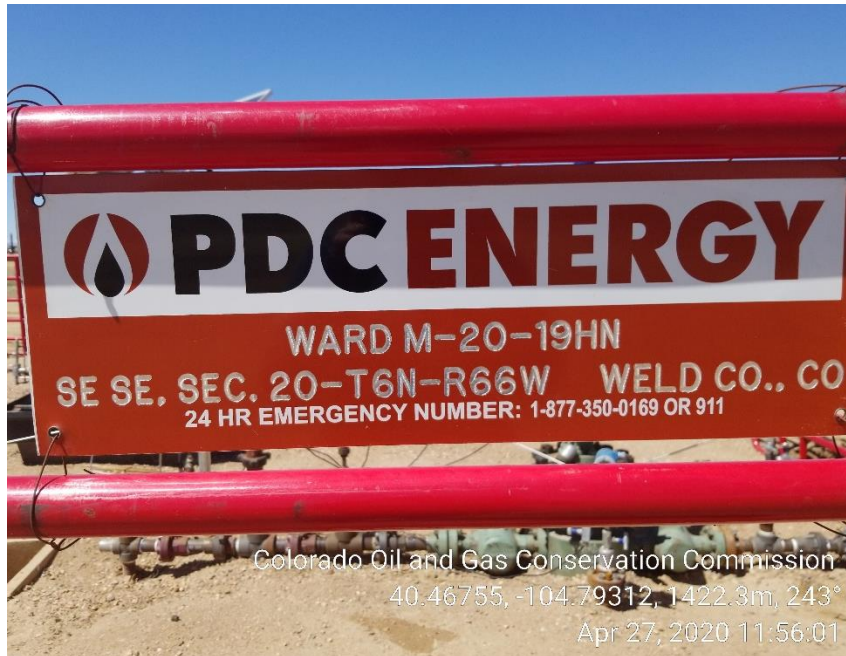


Photo 25: Wellhead Sign



Photo 26: Stained soil removed