

LINE TABLE		
LINE	DIRECTION	LENGTH
L1	N73°32'04"W	88.49'

- LEGEND:
- = PROPOSED WELLHEAD.
  - ◆ = TOP PRODUCTION ZONE.
  - = TARGET BOTTOM HOLE.
  - ▲ = SECTION CORNERS LOCATED. (NAD 83)
  - △ = SECTION CORNERS RE-ESTABLISHED. (Not Set on Ground.) (NAD 83)

NOTE:  
DISTANCES REFERENCED ON PLAT TO  
SECTION LINES ARE PERPENDICULAR.

NAD 83 (SURFACE HOLE LOCATION)	NAD 83 (TOP PRODUCTION ZONE)	NAD 83 (TARGET BOTTOM HOLE)
LATITUDE = 39°38'51.56" (39.647654°)	LATITUDE = 39°38'51.81" (39.647724°)	LATITUDE = 39°38'52.18" (39.647829°)
LONGITUDE = 104°37'25.81" (104.623836°)	LONGITUDE = 104°37'26.90" (104.624138°)	LONGITUDE = 104°39'30.38" (104.658440°)
LATITUDE = 39°38'51.60" (39.647667°)	LATITUDE = 39°38'51.85" (39.647737°)	LATITUDE = 39°38'52.23" (39.647841°)
LONGITUDE = 104°37'23.92" (104.623312°)	LONGITUDE = 104°37'25.01" (104.623613°)	LONGITUDE = 104°39'28.49" (104.657915°)
STATE PLANE NAD 83 (CO. CEN.)	STATE PLANE NAD 83 (CO. CEN.)	STATE PLANE NAD 83 (CO. CEN.)
N: 1661976.36' E: 3246717.17'	N: 1662000.95' E: 3246632.17'	N: 1661947.76' E: 3236972.86'
STATE PLANE NAD 27 (CO. CEN.)	STATE PLANE NAD 27 (CO. CEN.)	STATE PLANE NAD 27 (CO. CEN.)
N: 661969.19' E: 2246871.11'	N: 661993.78' E: 2246786.11'	N: 661940.42' E: 2237126.87'

PDOP = 1.6

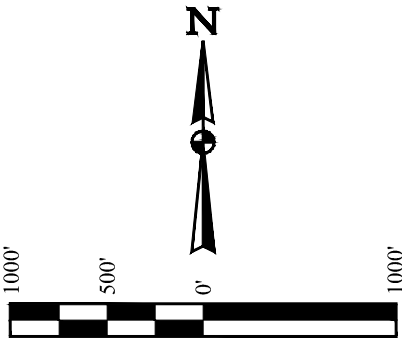
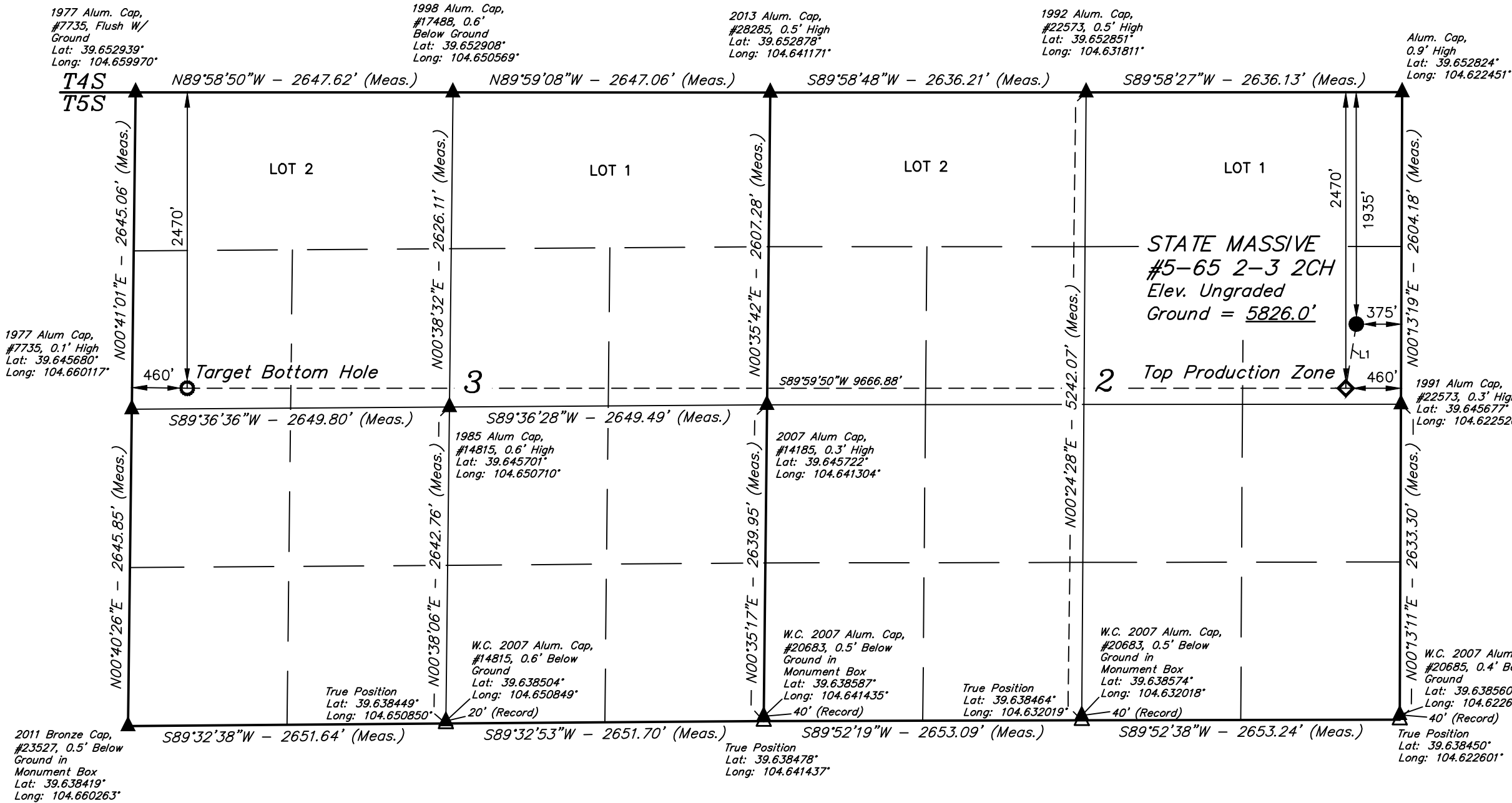
REV: 4 04-21-20 C.IVIE (SURFACE LOCATION MOVE)



UELS, LLC  
Corporate Office \* 85 South 200 East  
Vernal, UT 84078 \* (435) 789-1017

SURVEYED BY	CHAD MEIERS, A.K.	03-22-18	SCALE
DRAWN BY	C.IVIE	03-29-18	1" = 1000'

WELL LOCATION PLAT



LINE TABLE		
LINE	DIRECTION	LENGTH
L1	S09°14'24"W	541.95'

CERTIFICATE OF REGISTRATION

THIS IS TO CERTIFY THAT THE ABOVE PLAT WAS PREPARED FROM FIELD NOTES OF ACTUAL SURVEYS MADE BY ME OR UNDER MY SUPERVISION, AND THAT THE SAME ARE TRUE AND CORRECT TO THE BEST OF MY KNOWLEDGE AND BELIEF.

REGISTERED LAND SURVEYOR  
REGISTRATION NO. 28285  
STATE OF COLORADO  
JAN 15 2020

- LEGEND:
- = PROPOSED WELLHEAD.
  - ◆ = TOP PRODUCTION ZONE.
  - = TARGET BOTTOM HOLE.
  - ▲ = SECTION CORNERS LOCATED. (NAD 83)
  - △ = SECTION CORNERS RE-ESTABLISHED. (Not Set on Ground.) (NAD 83)

NOTE:  
DISTANCES REFERENCED ON PLAT TO  
SECTION LINES ARE PERPENDICULAR.

NAD 83 (SURFACE HOLE LOCATION)	NAD 83 (TOP PRODUCTION ZONE)	NAD 83 (TARGET BOTTOM HOLE)
LATITUDE = 39°38'51.06" (39.647517°)	LATITUDE = 39°38'45.78" (39.646050°)	LATITUDE = 39°38'46.16" (39.646155°)
LONGITUDE = 104°37'25.82" (104.623838°)	LONGITUDE = 104°37'26.96" (104.624155°)	LONGITUDE = 104°39'30.51" (104.658474°)
LATITUDE = 39°38'51.11" (39.647530°)	LATITUDE = 39°38'45.83" (39.646063°)	LATITUDE = 39°38'46.20" (39.646167°)
LONGITUDE = 104°37'23.93" (104.623314°)	LONGITUDE = 104°37'25.07" (104.623631°)	LONGITUDE = 104°39'28.62" (104.657949°)
STATE PLANE NAD 83 (CO. CEN.)	STATE PLANE NAD 83 (CO. CEN.)	STATE PLANE NAD 83 (CO. CEN.)
N: 1661926.39' E: 3246717.13'	N: 1661391.10' E: 3246633.13'	N: 1661337.89' E: 3236968.91'
STATE PLANE NAD 27 (CO. CEN.)	STATE PLANE NAD 27 (CO. CEN.)	STATE PLANE NAD 27 (CO. CEN.)
N: 661919.22' E: 2246871.07'	N: 661383.94' E: 2246787.08'	N: 661330.56' E: 2237122.94'

PDOP = 1.5

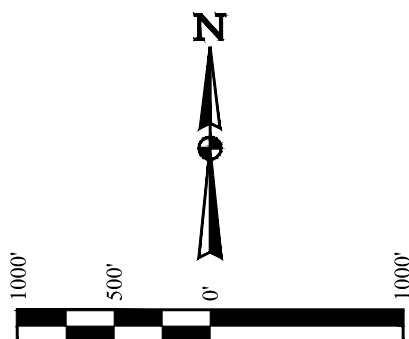
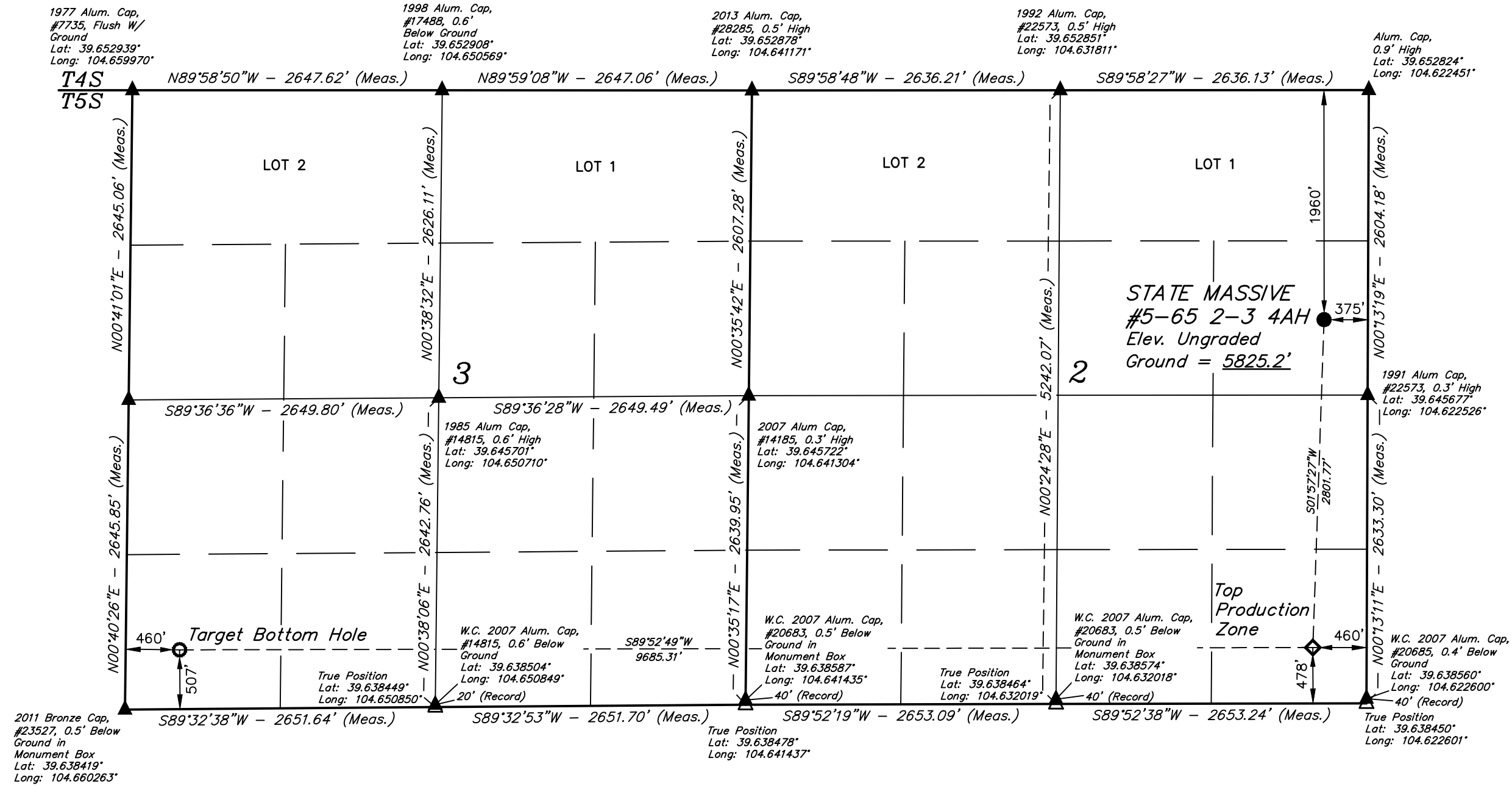
REV: 3 04-21-20 C.IVIE (SURFACE LOCATION MOVE)



UELS, LLC  
Corporate Office \* 85 South 200 East  
Vernal, UT 84078 \* (435) 789-1017

SURVEYED BY	CHAD MEIERS, A.K.	03-22-18	SCALE
DRAWN BY	C.IVIE	03-29-18	1" = 1000'

WELL LOCATION PLAT



CERTIFICATE OF REGISTRATION  
THIS IS TO CERTIFY THAT THE ABOVE PLAT WAS PREPARED FROM FIELD NOTES OF ACTUAL SURVEYS MADE BY ME OR UNDER MY SUPERVISION AND THAT THE SAME ARE TRUE AND CORRECT TO THE BEST OF MY KNOWLEDGE AND BELIEF.  
REGISTERED LAND SURVEYOR  
REGISTRATION NO. 28285  
STATE OF COLORADO  
CHAD MEIERS, A.K.  
03-22-18

- LEGEND:
- = PROPOSED WELLHEAD.
  - ◆ = TOP PRODUCTION ZONE.
  - = TARGET BOTTOM HOLE.
  - ▲ = SECTION CORNERS LOCATED. (NAD 83)
  - △ = SECTION CORNERS RE-ESTABLISHED. (Not Set on Ground.) (NAD 83)

NOTE:  
DISTANCES REFERENCED ON PLAT TO SECTION LINES ARE PERPENDICULAR.

NAD 83 (SURFACE HOLE LOCATION)	NAD 83 (TOP PRODUCTION ZONE)	NAD 83 (TARGET BOTTOM HOLE)
LATITUDE = 39°38'50.81" (39.647448°)	LATITUDE = 39°38'23.15" (39.639764)	LATITUDE = 39°38'23.33" (39.639815°)
LONGITUDE = 104°37'25.82" (104.623839°)	LONGITUDE = 104°37'27.19" (104.624220)	LONGITUDE = 104°39'30.97" (104.658602°)
NAD 27 (SURFACE HOLE LOCATION)	NAD 27 (TOP PRODUCTION ZONE)	NAD 27 (TARGET BOTTOM HOLE)
LATITUDE = 39°38'50.86" (39.647461°)	LATITUDE = 39°38'23.20" (39.639777)	LATITUDE = 39°38'23.38" (39.639827°)
LONGITUDE = 104°37'23.93" (104.623315°)	LONGITUDE = 104°37'25.31" (104.623696)	LONGITUDE = 104°39'29.08" (104.658077°)
STATE PLANE NAD 83 (CO. CEN.)	STATE PLANE NAD 83 (CO. CEN.)	STATE PLANE NAD 83 (CO. CEN.)
N: 1661901.36' E: 3246717.25'	N: 1659101.47' E: 3246636.84	N: 1659028.38' E: 3236954.33'
STATE PLANE NAD 27 (CO. CEN.)	STATE PLANE NAD 27 (CO. CEN.)	STATE PLANE NAD 27 (CO. CEN.)
N: 661894.19' E: 2246871.19'	N: 659094.34' E: 2246790.82	N: 659021.08' E: 2237108.39'

PDOP = 1.3

REV: 4 04-23-20 C.IVIE (TOP PRODUCTION ZONE MOVE)



UELS, LLC  
Corporate Office \* 85 South 200 East  
Vernal, UT 84078 \* (435) 789-1017

SURVEYED BY	CHAD MEIERS, A.K.	03-22-18	SCALE
DRAWN BY	C.IVIE	03-29-18	1" = 1000'

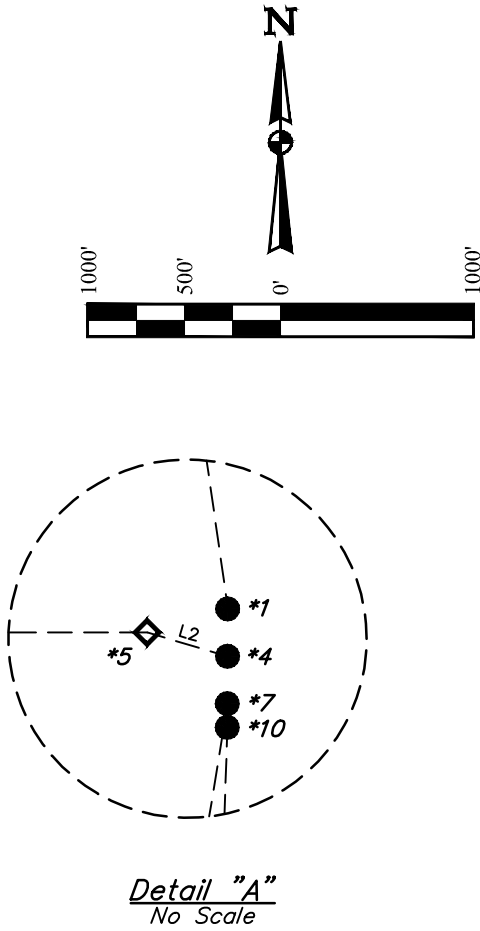
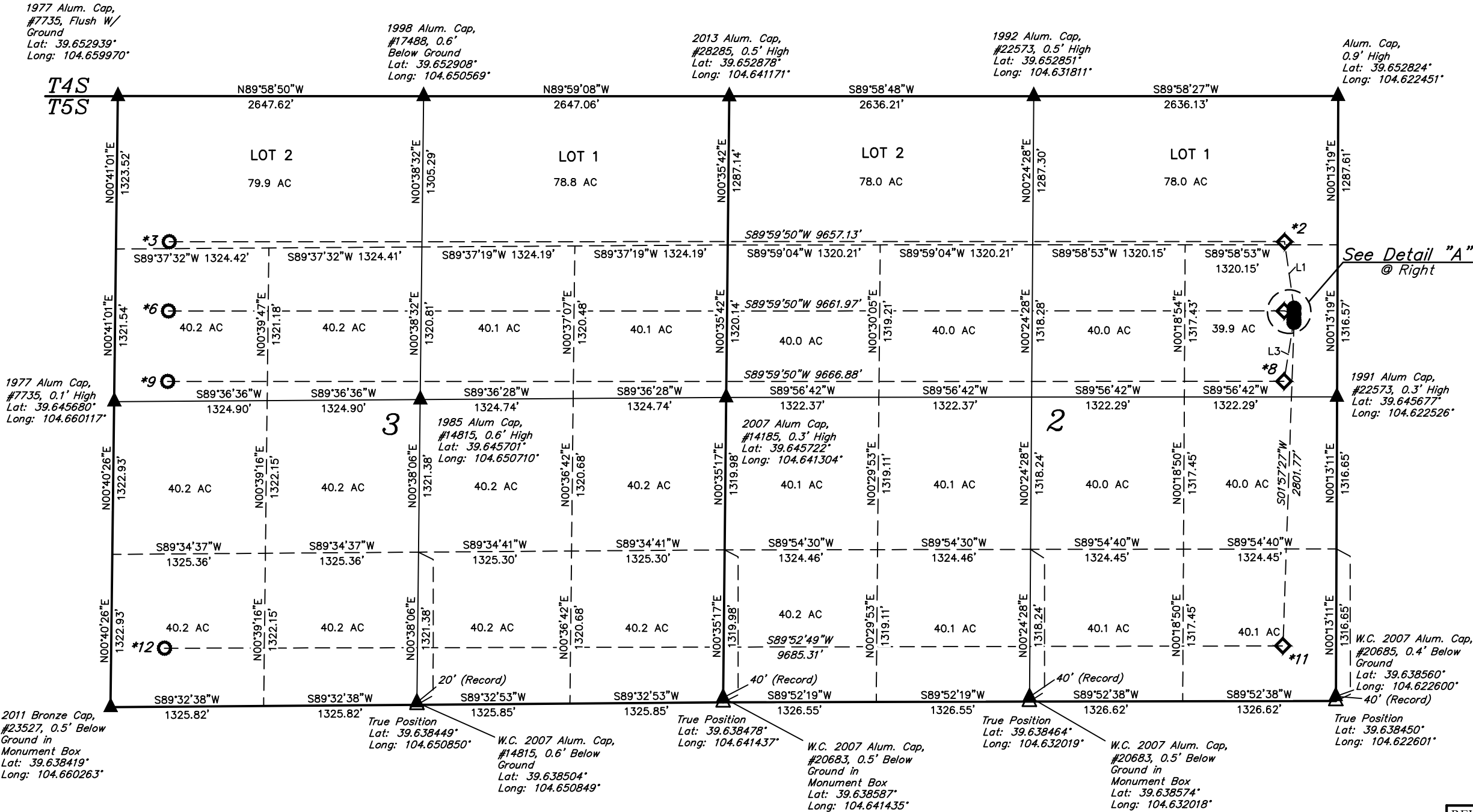
WELL LOCATION PLAT



STATE MASSIVE #5-65 2-3 1CH, 2AH, 2CH & 4AH  
SE 1/4 NE 1/4, SECTION 2, T5S, R65W, 6th P.M.  
ARAPAHOE COUNTY, COLORADO

BASIS OF BEARINGS  
TRANSVERSE MERCATOR PROJECTION WITH A CENTRAL MERIDIAN OF W105°00'00".  
BASIS OF ELEVATION  
OPUS SOLUTION GENERATED NAVD 88

LINE TABLE		
LINE	DIRECTION	LENGTH
L1	N08°11'00"W	580.99'
L2	N73°32'04"W	88.49'
L3	S09°14'24"W	541.95'



CERTIFICATE OF SURVEY  
THIS IS TO CERTIFY THAT THE ABOVE DATA WAS PREPARED FROM FIELD NOTES OF ACTUAL SURVEYS MADE BY ME OR UNDER MY SUPERVISION, AND THAT THE SAME ARE TRUE AND CORRECT TO THE BEST OF MY KNOWLEDGE AND BELIEF.  
REGISTERED LAND SURVEYOR  
REGISTRATION NO. 28285  
STATE OF COLORADO  
04-23-20

LEGEND:  
● = PROPOSED WELLHEAD.  
◆ = TOP PRODUCTION ZONE.  
○ = TARGET BOTTOM HOLE.  
▲ = SECTION CORNERS LOCATED. (NAD 83)  
△ = SECTION CORNERS RE-ESTABLISHED. (Not Set on Ground.) (NAD 83)

WELL	SURFACE LOCATION	TOP PRODUCTION ZONE	TARGET BOTTOM HOLE
1CH	*1 1835' FNL 375' FEL	*2 1260' FNL 460' FEL	*3 1260' FNL 460' FWL
2AH	*4 1885' FNL 375' FEL	*5 1860' FNL 460' FEL	*6 1860' FNL 460' FWL
2CH	*7 1935' FNL 375' FEL	*8 2470' FNL 460' FEL	*9 2470' FNL 460' FWL
4AH	*10 1960' FNL 375' FEL	*11 478' FSL 460' FEL	*12 507' FSL 460' FWL



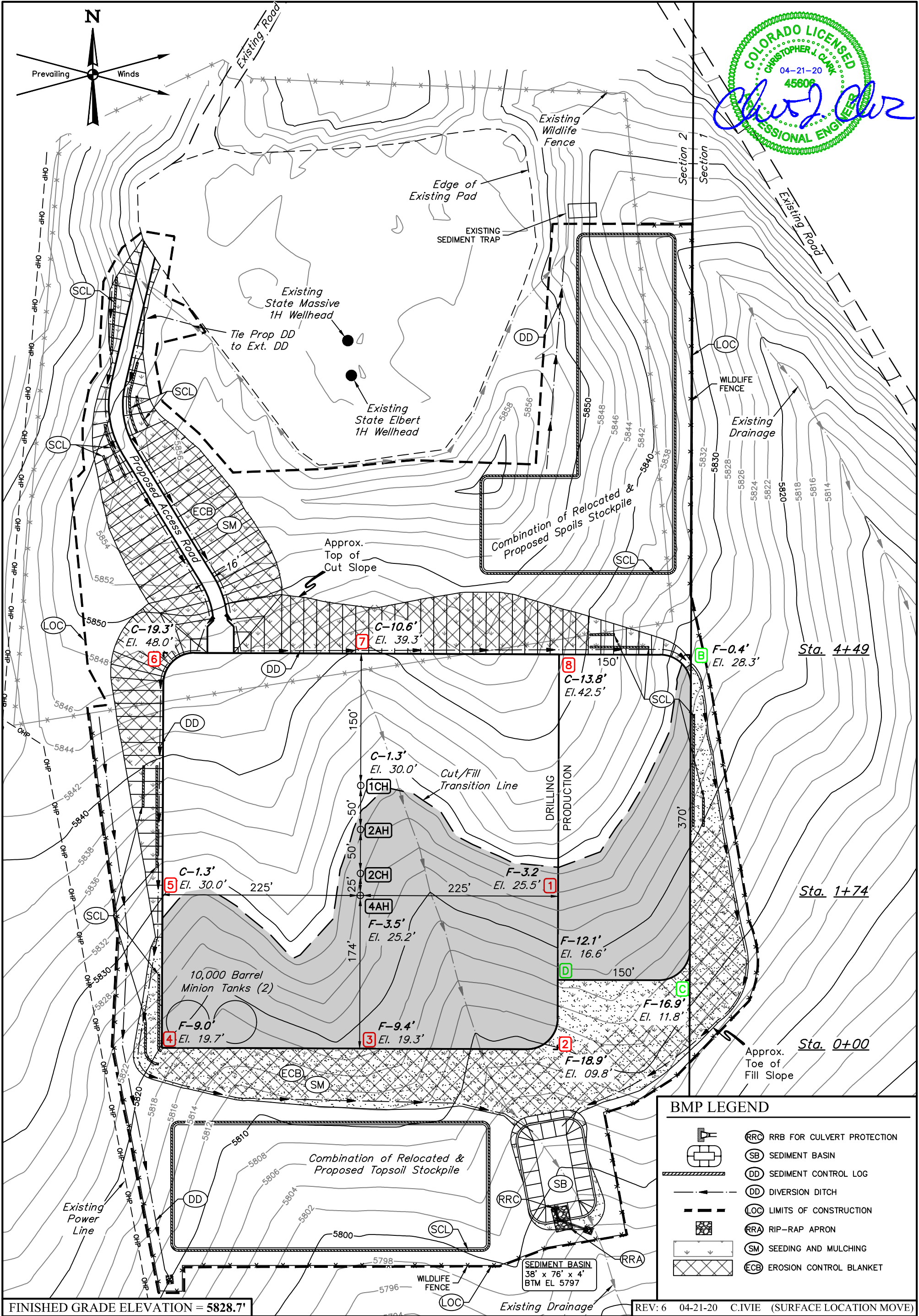
UINTEAH  
ENGINEERING & LAND SURVEYING

UELS, LLC  
Corporate Office \* 85 South 200 East  
Vernal, UT 84078 \* (435) 789-1017

SURVEYED BY	CHAD MEIERS, A.K.	03-22-18	SCALE
DRAWN BY	C.IVIE	03-29-18	1" = 1000'

SECTION BREAK DOWN

REV: 5 04-23-20 C.IVIE (4AH TOP PRODUCTION ZONE MOVE)



FINISHED GRADE ELEVATION = 5828.7'

- NOTES:**
- Round corners at 35' radius or as needed.
  - Contours shown at 2' intervals.
  - Shown Cut/Fills do NOT include the 6" pad gravel finish.
  - Access road & pad re-design was not engineered by Uintah Engineering & Land Surveying.



**UELS, LLC**  
Corporate Office \* 85 South 200 East  
Vernal, UT 84078 \* (435) 789-1017

**CRESTONE PEAK RESOURCES OPERATING LLC**

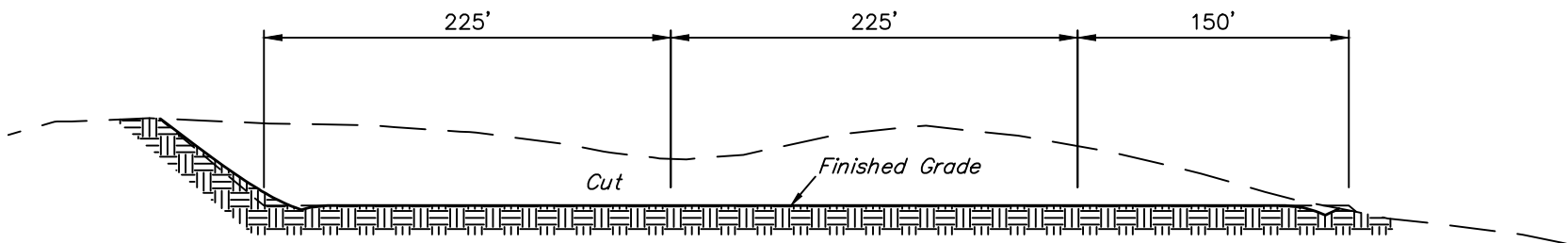
**STATE MASSIVE #5-65 2-3 1CH, 2AH, 2CH & 4AH**  
**SE 1/4 NE 1/4, SECTION 2, T5S, R65W, 6th P.M.**  
**ARAPAHOE COUNTY, COLORADO**

SURVEYED BY	CHAD MEIERS, A.K.	03-22-18	SCALE
DRAWN BY	PH	07-27-18	1" = 100'

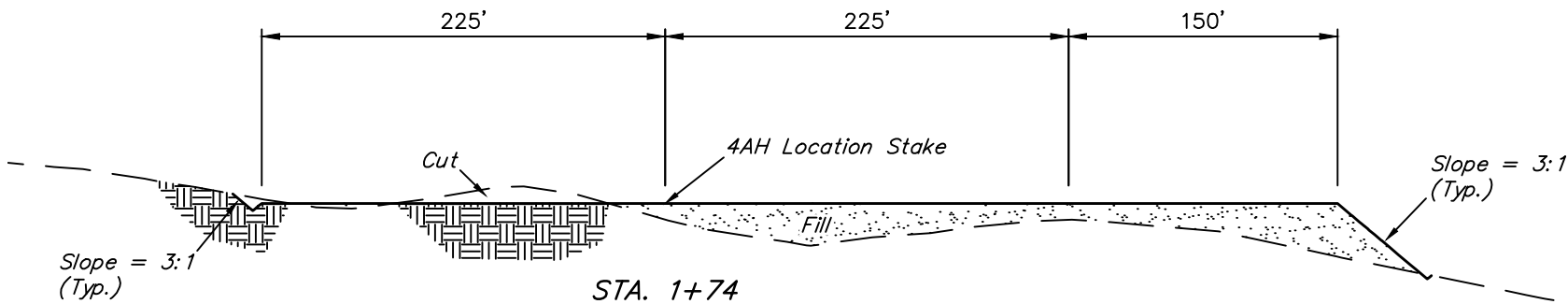
**CONSTRUCTION LAYOUT** **FIGURE #1**



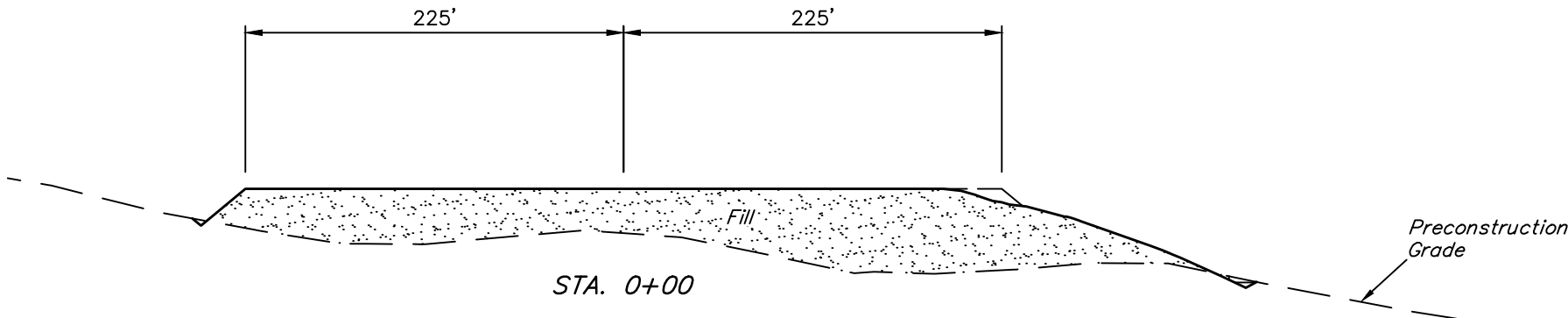
1" = 40'  
X-Section  
Scale  
1" = 100'



STA. 4+49



STA. 1+74



STA. 0+00

APPROXIMATE EARTHWORK QUANTITIES	
(6") TOPSOIL STRIPPING	7,820 Cu. Yds.
REMAINING LOCATION	60,340 Cu. Yds.
TOTAL CUT	68,160 Cu. Yds.
FILL	59,780 Cu. Yds.
EXCESS MATERIAL	8,380 Cu. Yds.
TOPSOIL	7,820 Cu. Yds.
EXCESS UNBALANCE (After Interim Rehabilitation)	560 Cu. Yds.

APPROXIMATE SURFACE DISTURBANCE AREAS		
	DISTANCE	ACRES
TOTAL COMBINED WELL SITE DISTURBANCE	NA	-
& ACCESS ROAD R-O-W DISTURBANCE	±494'	-
TOTAL SURFACE USE AREA		±15.584

REV: 6 04-21-20 C.IVIE (SURFACE LOCATION MOVE)

NOTES:

- Fill quantity includes 6" pad gravel surfacing (5,830 CY)
- Fill quantity includes 10% for compaction.
- Calculations based on 6" of topsoil stripping.

CRESTONE PEAK RESOURCES OPERATING LLC

STATE MASSIVE #5-65 2-3 1CH, 2AH, 2CH & 4AH  
SE 1/4 NE 1/4, SECTION 2, T5S, R65W, 6th P.M.  
ARAPAHOE COUNTY, COLORADO

SURVEYED BY	CHAD MEIERS, A.K.	03-22-18	SCALE
DRAWN BY	PH	07-27-18	AS SHOWN
CONSTRUCTION LAYOUT CROSS SECTIONS			FIGURE #2



UELS, LLC  
Corporate Office \* 85 South 200 East  
Vernal, UT 84078 \* (435) 789-1017



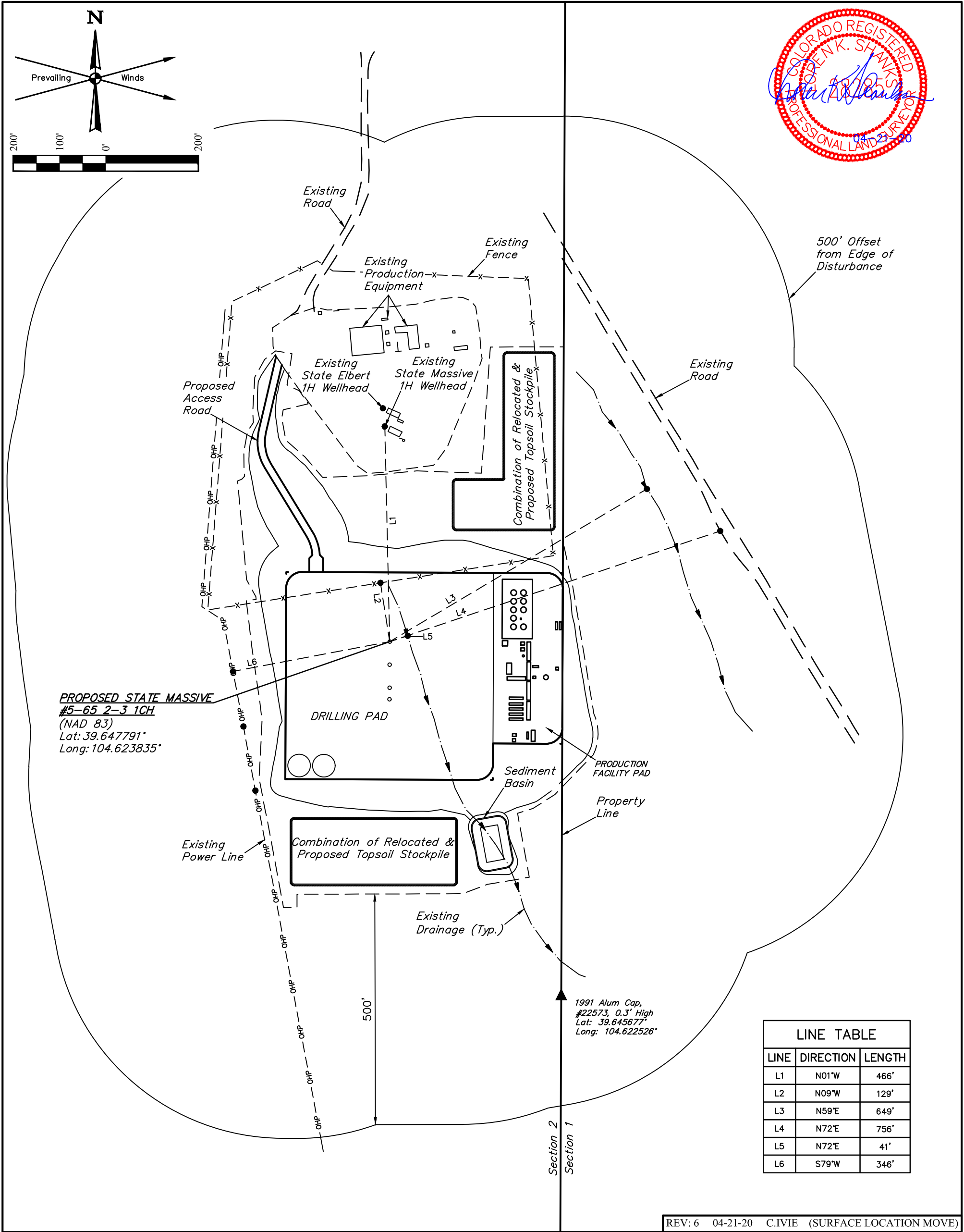
**NOTES:**  
• Contours shown at 2' intervals.



**UELS, LLC**  
Corporate Office \* 85 South 200 East  
Vernal, UT 84078 \* (435) 789-1017

**CRESTONE PEAK RESOURCES OPERATING LLC**

**STATE MASSIVE #5-65 2-3 1CH, 2AH, 2CH & 4AH**  
**SE 1/4 NE 1/4, SECTION 2, T5S, R65W, 6th P.M.**  
**ARAPAHOE COUNTY, COLORADO**



**PLANT COMMUNITY**

☐ DISTURBED GRASSLAND

☒ NATIVE GRASSLAND

☐ SHRUB LAND

☐ PLAINS RIPARIAN

☐ MOUNTAIN RIPARIAN

☐ FOREST LAND

☐ WETLANDS AQUATIC

☐ ALPINE

☐ OTHER (Describe): \_\_\_\_\_

**CURRENT LAND USE**

CROP LAND: ☐ IRRIGATED ☐ DRY LAND ☐ IMPROVED PASTURE ☐ HAY MEADOW ☐ CRP

NON-CROP LAND: ☒ RANGELAND ☐ TIMBER ☐ RECREATIONAL ☐ OTHER (Describe) \_\_\_\_\_

SUBDIVIDED: ☐ INDUSTRIAL ☐ COMMERCIAL ☐ RESIDENTIAL \_\_\_\_\_

**FUTURE LAND USE**

CROP LAND: ☐ IRRIGATED ☐ DRY LAND ☐ IMPROVED PASTURE ☐ HAY MEADOW ☐ CRP

NON-CROP LAND: ☐ RANGELAND ☐ TIMBER ☐ RECREATIONAL ☐ OTHER (Describe) \_\_\_\_\_

SUBDIVIDED: ☐ INDUSTRIAL ☐ COMMERCIAL ☐ RESIDENTIAL \_\_\_\_\_

**CRESTONE PEAK RESOURCES OPERATING LLC**

**STATE MASSIVE #5-65 2-3 1CH, 2AH, 2CH & 4AH**  
**SE 1/4 NE 1/4, SECTION 2, T5S, R65W, 6th P.M.**  
**ARAPAHOE COUNTY, COLORADO**



**UELS, LLC**  
Corporate Office \* 85 South 200 East  
Vernal, UT 84078 \* (435) 789-1017

SURVEYED BY	CHAD MEIERS, A.K.	03-22-18	SCALE
DRAWN BY	C.IVIE	03-29-18	1" = 200'
LOCATION DRAWING		FIGURE #4	

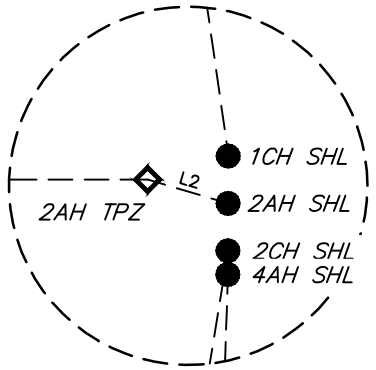
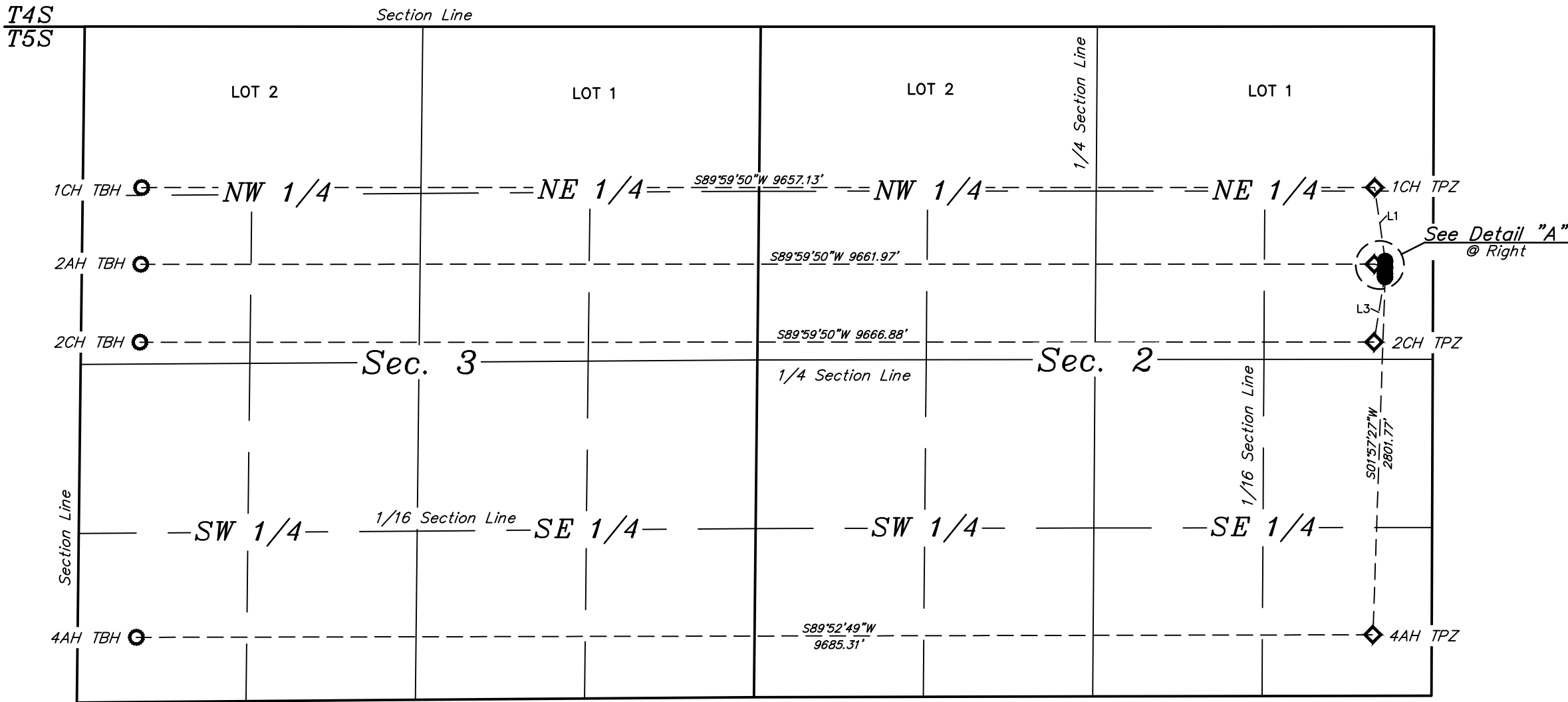




LEGEND:

- = SURFACE LOCATION.
- ◆ = TOP PRODUCTION ZONE.
- = TARGET BOTTOM HOLE.
- SHL= SURFACE HOLE LOCATION.
- TPZ = TOP PRODUCTION ZONE.
- TBH = TARGET BOTTOM HOLE.

LINE TABLE		
LINE	DIRECTION	LENGTH
L1	N08°11'00"W	580.99'
L2	N73°32'04"W	88.49'
L3	S09°14'24"W	541.95'



Detail "A"  
No Scale

REV: 5 04-23-20 C.IVIE (4AH TOP PRODUCTION ZONE MOVE)

CRESTONE PEAK RESOURCES OPERATING LLC

STATE MASSIVE #5-65 2-3 1CH, 2AH, 2CH & 4AH  
SE 1/4 NE 1/4, SECTION 2, T5S, R65W, 6th P.M.  
ARAPAHOE COUNTY, COLORADO

SURVEYED BY	CHAD MEIERS, A.K.	03-22-18	SCALE
DRAWN BY	C.IVIE	03-29-18	1" = 1000'

MULTI-WELL PLAN

FIGURE #5



UELS, LLC  
Corporate Office \* 85 South 200 East  
Vernal, UT 84078 \* (435) 789-1017

CRESTONE PEAK RESOURCES OPERATING LLC  
STATE MASSIVE #5-65 2-3 1CH, 2AH, 2CH & 4AH  
SE 1/4 NE 1/4 SECTION 2, T5S, R65W, 6th P.M.  
ARAPAHOE COUNTY, COLORADO  
DATE: 03-30-18 C.IVIE  
REV: 5 04-21-20 C.IVIE (SURFACE LOCATION MOVE)

DISTANCES FROM WELLHEAD																						
WELL NAME	BUILDING		BUILDING UNIT		HIGH OCCU. BUILDING		D.O.A.A.		PUBLIC ROAD		ABOVE GROUND UTILITY		RAILROAD		PROPERTY LINE		CHILD CARE FACILITY		SCHOOL FACILITY		SCHOOL PROPERTY LINE	
	DIRECTION	LENGTH	DIRECTION	LENGTH	DIRECTION	LENGTH	DIRECTION	LENGTH	DIRECTION	LENGTH	DIRECTION	LENGTH	DIRECTION	LENGTH	DIRECTION	LENGTH	DIRECTION	LENGTH	DIRECTION	LENGTH	DIRECTION	LENGTH
STATE MASSIVE #5-65 2-3 1CH	OVER 1 MILE		OVER 1 MILE		OVER 1 MILE		OVER 1 MILE		OVER 1 MILE		S79°W	346'	OVER 1 MILE		EAST	375'	OVER 1 MILE		OVER 1 MILE		OVER 1 MILE	
STATE MASSIVE #5-65 2-3 2AH	OVER 1 MILE		OVER 1 MILE		OVER 1 MILE		OVER 1 MILE		OVER 1 MILE		S79°W	336'	OVER 1 MILE		EAST	375'	OVER 1 MILE		OVER 1 MILE		OVER 1 MILE	
STATE MASSIVE #5-65 2-3 2CH	OVER 1 MILE		OVER 1 MILE		OVER 1 MILE		OVER 1 MILE		OVER 1 MILE		S79°W	327'	OVER 1 MILE		EAST	375'	OVER 1 MILE		OVER 1 MILE		OVER 1 MILE	
STATE MASSIVE #5-65 2-3 4AH	OVER 1 MILE		OVER 1 MILE		OVER 1 MILE		OVER 1 MILE		OVER 1 MILE		S79°W	322'	OVER 1 MILE		EAST	375'	OVER 1 MILE		OVER 1 MILE		OVER 1 MILE	

DISTANCES FROM PRODUCTION EQUIPMENT																						
PRODUCTION FEATURE	BUILDING		BUILDING UNIT		HIGH OCCU. BUILDING		D.O.A.A.		PUBLIC ROAD		ABOVE GROUND UTILITY		RAILROAD		PROPERTY LINE		CHILD CARE FACILITY		SCHOOL FACILITY		SCHOOL PROPERTY LINE	
	DIRECTION	LENGTH	DIRECTION	LENGTH	DIRECTION	LENGTH	DIRECTION	LENGTH	DIRECTION	LENGTH	DIRECTION	LENGTH	DIRECTION	LENGTH	DIRECTION	LENGTH	DIRECTION	LENGTH	DIRECTION	LENGTH	DIRECTION	LENGTH
PRODUCTION EQUIPMENT	OVER 1 MILE		OVER 1 MILE		OVER 1 MILE		OVER 1 MILE		OVER 1 MILE		S79°W	568'	OVER 1 MILE		EAST	4'	OVER 1 MILE		OVER 1 MILE		OVER 1 MILE	

