

Inspection Photos

4/22/2020

Operator: CAERUS PICEANCE LLC - 10456

Facility ID: 419752

Garfield (Rio Blanco County), CO

Aaron Trujillo

NW Reclamation Specialist

COGCC

Location ID: 419752

Photo 1: Photo of sign at Location entrance on the northeast corner of the Location.

Photo 2: Photo taken from the northeast end of the Location, facing south. Photo provides an overview of the location.

Inspection Photos
Operator Name: CAERUS PICEANCE LLC - 10456
Location ID: 419752



Photo 3: Photo taken from the northeast end of the Location, facing west. Photo provides an overview of the location.



Photo 4: Photo taken from the northeast end of the Location, facing west. Photo shows weed debris has established/accumulated on the perimeter slopes/berms of the Location. Weed debris requires removal and proper disposal.

Inspection Photos
Operator Name: CAERUS PICEANCE LLC - 10456
Location ID: 419752



Photo 5: Photo taken from the north end of the Location, facing west. Photo shows storage of unused equipment/materials/trash. All stored/unused equipment and trash debris requires removal in accordance with Rule 603.f



Photo 6: Photo taken from the north end of the Location, facing north. Photo shows unused equipment (shed) stored on Location. All stored/unused equipment and trash debris requires removal in accordance with Rule 603.f

Inspection Photos

Operator Name: CAERUS PICEANCE LLC - 10456

Location ID: 419752



Photo 7: Photo taken from the north end of the Location. Photo shows trash debris stored on Location. All stored/unused equipment and trash debris requires removal in accordance with Rule 603.f



Photo 8: Photo taken from the north end of the Location. Photo shows trash debris stored on Location. All stored/unused equipment and trash debris requires removal in accordance with Rule 603.f

Inspection Photos
Operator Name: CAERUS PICEANCE LLC - 10456
Location ID: 419752



Photo 9: Photo taken from the north end of the Location. Photo shows unused equipment (shed, etc...) and trash debris stored on Location. All stored/unused equipment and trash debris requires removal in accordance with Rule 603.f



Photo 10: Photo taken from the north end of the Location. Photo shows unused equipment (shed, pipe, etc...) and trash debris stored on Location. All stored/unused equipment and trash debris requires removal in accordance with Rule 603.f



Inspection Photos
Operator Name: CAERUS PICEANCE LLC - 10456
Location ID: 419752



Photo 11: Photo taken from the north end of the Location. Photo shows unused equipment (pipe, tanks, etc...) and trash debris stored on Location. All stored/unused equipment and trash debris requires removal in accordance with Rule 603.f



Photo 12: Photo taken from the north end of the Location. Photo shows unused equipment (tanks, etc...) and trash debris stored on Location. All stored/unused equipment and trash debris requires removal in accordance with Rule 603.f

Inspection Photos

Operator Name: CAERUS PICEANCE LLC - 10456

Location ID: 419752



Photo 13: Photo of sign on tank observed in photo 12. Photo shows tank has been “permanently closed” since March 2006. Tank is considered unused equipment and requires removal.



Photo 14: Photo taken from the north end of the Location. Photo shows unused/abandoned equipment (risers) on Location. All unused/abandoned equipment requires removal in accordance with Rule 603.f

Inspection Photos
Operator Name: CAERUS PICEANCE LLC - 10456
Location ID: 419752



Photo 15: Photo taken from the northwest end of the Location. Photo shows trash debris stored on Location. All stored/unused equipment and trash debris requires removal in accordance with Rule 603.f



Photo 16: Photo taken from the northwest end of the Location, facing east. Photo shows unused equipment and trash debris stored on Location. Photo also shows weed debris has established/accumulated on the perimeter slopes/berms of the Location.

Inspection Photos
Operator Name: CAERUS PICEANCE LLC - 10456
Location ID: 419752



Photo 17: Photo taken from the northwest end of the Location, facing south. Photo shows weed debris has established/accumulated on the perimeter slopes/berms of the Location.



Photo 18: Continued from photo 17.



Inspection Photos
Operator Name: CAERUS PICEANCE LLC - 10456
Location ID: 419752



Photo 19: Photo taken from the northwest end of the Location, facing southeast. Photo shows unused/abandoned equipment (risers) on Location. All unused/abandoned equipment requires removal in accordance with Rule 603.f



Photo 20: Photo taken from the northwest end of the Location, facing west. Photo shows unused/abandoned equipment (heater treater) on Location. All unused/abandoned equipment requires removal in accordance with Rule 603.f

Inspection Photos
Operator Name: CAERUS PICEANCE LLC - 10456
Location ID: 419752



Photo 21: Photo taken from the northwest end of the Location, facing east. Photo shows unused/abandoned equipment (risers) on Location. Equipment appears to have been associated with a compressor, that has since been removed. All unused/abandoned equipment requires removal in accordance with Rule 603.f



Photo 22: See comments under photo 21.

Inspection Photos
Operator Name: CAERUS PICEANCE LLC - 10456
Location ID: 419752



Photo 23: See comments under photo 21.



Photo 24: See comments under photo 21.

Inspection Photos
Operator Name: CAERUS PICEANCE LLC - 10456
Location ID: 419752



Photo 25: See comments under photo 21.



Photo 26: See comments under photo 21.

Inspection Photos
Operator Name: CAERUS PICEANCE LLC - 10456
Location ID: 419752



Photo 27: See comments under photo 21.



Photo 28: See comments under photo 21.

Inspection Photos
Operator Name: CAERUS PICEANCE LLC - 10456
Location ID: 419752



Photo 29: See comments under photo 21.



Photo 30: See comments under photo 21.

Inspection Photos
Operator Name: CAERUS PICEANCE LLC - 10456
Location ID: 419752



Photo 31: See comments under photo 21.



Photo 32: See comments under photo 21.

Inspection Photos
Operator Name: CAERUS PICEANCE LLC - 10456
Location ID: 419752



Photo 33: See comments under photo 21.



Photo 34: See comments under photo 21.

Inspection Photos
Operator Name: CAERUS PICEANCE LLC - 10456
Location ID: 419752



Photo 35: See comments under photo 21.



Photo 36: See comments under photo 21.

Inspection Photos
Operator Name: CAERUS PICEANCE LLC - 10456
Location ID: 419752



Photo 37: Photo taken from the west end of the Location, facing north. Photos 37-40 provide an overview of the Location from north, northeast, southeast to south. Photos also show unused/abandoned equipment on Location.



Photo 38: See comments under photo 37.



Inspection Photos
Operator Name: CAERUS PICEANCE LLC - 10456
Location ID: 419752



Photo 39: See comments under photo 37.



Photo 40: See comments under photo 37.

Inspection Photos
Operator Name: CAERUS PICEANCE LLC - 10456
Location ID: 419752



Photo 41: Photo taken from the storage container on the west end of the Location. Photo shows trash debris.



Photo 42: Photo taken from the north end of the Location, facing southwest. Photo shows unused/abandoned equipment (risers) on Location. Equipment appears to have been associated with a compressor, that has since been removed. All unused/abandoned equipment requires removal in accordance with Rule 603.f. Photo also shows stained soils.

Inspection Photos
Operator Name: CAERUS PICEANCE LLC - 10456
Location ID: 419752



Photo 43: Continued from photo 42. Photo shows stained soils.



Photo 44: Photo taken from the compressor on the west end of the Location. Photo shows barrel of oil placed upon secondary containment. Photo also shows stained soils on Location.

Inspection Photos
Operator Name: CAERUS PICEANCE LLC - 10456
Location ID: 419752



Photo 45: Photo taken from the west end of the Location, facing north. Photo of containment BMP.



Photo 46: Continued from photo 45. Photo shows containment BMP has filled with chemicals/fluids. Photo also shows wildlife appears to have entered and died within the BMP.



Inspection Photos
Operator Name: CAERUS PICEANCE LLC - 10456
Location ID: 419752



Photo 47: Photo taken from the southwest area of the Location. Photo shows unused/abandoned equipment (risers) on Location. Equipment appears to have been associated with a compressor, that has since been removed. All unused/abandoned equipment requires removal in accordance with Rule 603.f. Photo also shows stained soils.



Photo 48: See comments under photo 47.

Inspection Photos
Operator Name: CAERUS PICEANCE LLC - 10456
Location ID: 419752



Photo 49: See comments under photo 47.



Photo 50: See comments under photo 47.



Inspection Photos
Operator Name: CAERUS PICEANCE LLC - 10456
Location ID: 419752



Photo 51: See comments under photo 47.



Photo 52: Photo taken from the southwest end of the Location, facing north. Photo shows stormwater containment pond. Pipe with gate installed to allow flow/discharge. Outlet of BMP appears to discharge directly into a creek adjacent to the Location.

Inspection Photos
Operator Name: CAERUS PICEANCE LLC - 10456
Location ID: 419752



Photo 53: See comments under photo 52.



Photo 54: Photo taken from the southwest end of the Location, facing north. Photos 54-56 provide an overview of the Location from north, east to southeast. Photos also show unused/abandoned equipment on Location.

Inspection Photos
Operator Name: CAERUS PICEANCE LLC - 10456
Location ID: 419752



Photo 55: See comments under photo 54.



Photo 56: See comments under photo 54.

Inspection Photos
Operator Name: CAERUS PICEANCE LLC - 10456
Location ID: 419752



Photo 57: Photo taken from the southwest end of the Location. Photo shows unused equipment being stored on Location.



Photo 58: See comments under photo 57.

Inspection Photos
Operator Name: CAERUS PICEANCE LLC - 10456
Location ID: 419752



Photo 59: See comments under photo 57.



Photo 60: Photo taken from the southeast end of the Location, facing south. Photo show an unused Coalescing Filter stored on the Location. Filter missing blind flange ends; flanges are required to be placed on filter immediately.



Inspection Photos
Operator Name: CAERUS PICEANCE LLC - 10456
Location ID: 419752



Photo 61: Photo taken from the shed on the southeast end of the Location. Photo shows trash debris on Location. All trash debris requires removal in accordance with Rule 603.f.



Photo 62: Photo taken from the east end of the Location, facing northwest. Photo shows unused/abandoned equipment (risers) on Location. All unused/abandoned equipment requires removal in accordance with Rule 603.f.

Inspection Photos
Operator Name: CAERUS PICEANCE LLC - 10456
Location ID: 419752



Photo 63: Photo taken from the east end of the Location. Photo shows unused equipment/trash debris placed on top secondary containment. Unused equipment/trash debris requires removal in accordance with Rule 603.f.



Photo 64: Continued from photo 63. Photo shows chemicals/fluids within secondary containment that needs to be removed.



Inspection Photos
Operator Name: CAERUS PICEANCE LLC - 10456
Location ID: 419752



Photo 65: Photo taken from east end of the Location. Photo shows chemicals/fluids within secondary containment that needs to be removed.



Photo 66: Photo taken from the east end of the Location, facing northwest. Photo shows vertical separator that appears to remain in use on Location.

Inspection Photos
Operator Name: CAERUS PICEANCE LLC - 10456
Location ID: 419752

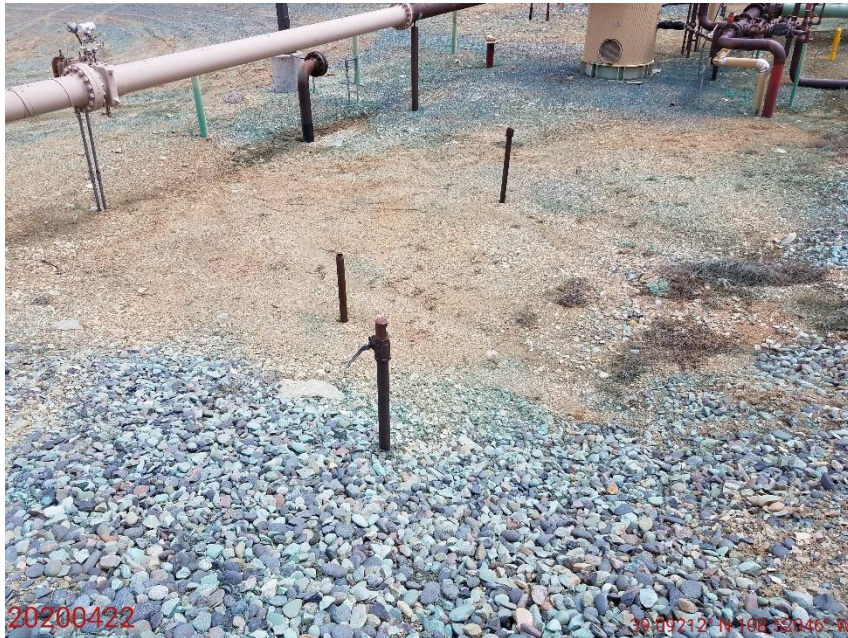


Photo 67: Photo taken from the west end of the vertical separator. Photo shows unused/abandoned equipment (risers) on Location. All unused/abandoned equipment requires removal in accordance with Rule 603.f.



Photo 68: Photo taken from the northeast end of the vertical separator. Photo shows unused/abandoned equipment (risers) on Location, with stones placed upon the open pipe; this is improper capping procedure. All unused/abandoned equipment requires removal in accordance with Rule 603.f.

Inspection Photos
Operator Name: CAERUS PICEANCE LLC - 10456
Location ID: 419752



Photo 69: Photo taken east of the vertical separator. See comments under photo 68.



Photo 70: Photo taken east of the vertical separator. See comments under photo 68.

Inspection Photos
Operator Name: CAERUS PICEANCE LLC - 10456
Location ID: 419752



Photo 71: Photo taken from the east end of the Location, facing northeast. Photo shows unused/abandoned equipment (meter shed, risers) on Location, with stones placed upon the open pipe; this is improper capping procedure. All unused/abandoned equipment requires removal in accordance with Rule 603.f.



Photo 72: Continued from photo 71.



Inspection Photos
Operator Name: CAERUS PICEANCE LLC - 10456
Location ID: 419752



Photo 73: Photo taken from northeast end of the Location. Photo shows unused equipment and trash debris on Location. All stored/unused equipment and trash debris requires removal in accordance with Rule 603.f



Photo 74: Continued from photo 73.



Inspection Photos
Operator Name: CAERUS PICEANCE LLC - 10456
Location ID: 419752



Photo 75: Photo taken from the northeast end of the Location, facing east. Photo shows unused equipment (pipe) stored on Location. All stored/unused equipment and trash debris requires removal in accordance with Rule 603.f



Photo 76: Photo taken from the northeast end of the Location, facing northeast. Photo shows trash container has been left open; Container needs to be closed to prevent access by wildlife.



Inspection Photos
Operator Name: CAERUS PICEANCE LLC - 10456
Location ID: 419752



Photo 77: Photo taken from the trash container. Photo shows stained soils; oily chemicals appear to be discharging from the trash container.



Photo 78: Photo taken from the north end of the Location. Photo shows unused rock material stored on the Location.

Inspection Photos
Operator Name: CAERUS PICEANCE LLC - 10456
Location ID: 419752



Photo 79: On 4/22/2020, Reclamation specialist Trujillo utilized a SUA to capture an aerial image of the Location; Photo shows large areas on the North and southeast ends of the Location where either unused/abandoned equipment, or trash debris is being stored. These areas also include areas where compressors were once located, but have since been removed. All stored/unused equipment and trash debris requires removal in accordance with Rule 603.f. These areas are also no longer needed for production activities and require reclamation in accordance with 1003 rules.



Inspection Photos
Operator Name: CAERUS PICEANCE LLC - 10456
Location ID: 419752



Photo 80: On 4/22/2020, Reclamation specialist Trujillo utilized a SUA to capture an aerial image of the Location; Photo shows large areas on the North ends of the Location where either unused/abandoned equipment, or trash debris is being stored. These areas also include areas where compressors were once located, but have since been removed. All stored/unused equipment and trash debris requires removal in accordance with Rule 603.f. These areas (yellow) are also no longer needed for production activities and require reclamation in accordance with 1003 rules.



Inspection Photos
Operator Name: CAERUS PICEANCE LLC - 10456
Location ID: 419752

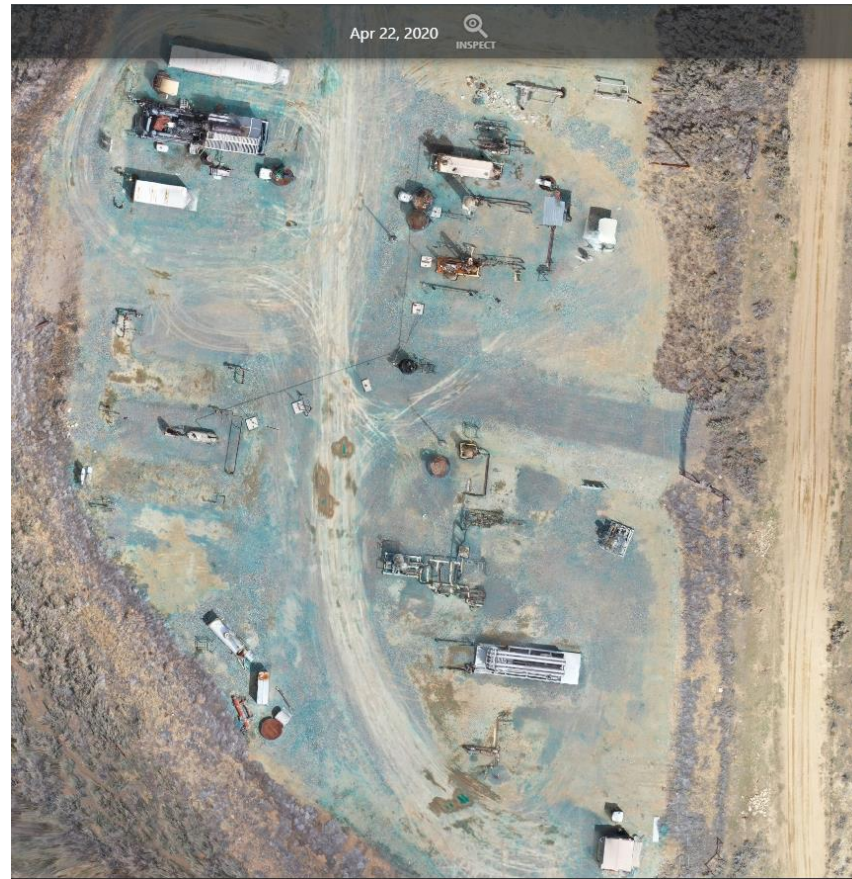


Photo 81: On 4/22/2020, Reclamation specialist Trujillo utilized a SUA to capture an aerial image of the Location; Photo shows large areas on the South ends of the Location where either unused/abandoned equipment, or trash debris is being stored. These areas also include areas where compressors were once located, but have since been removed. All stored/unused equipment and trash debris requires removal in accordance with Rule 603.f.



Inspection Photos
Operator Name: CAERUS PICEANCE LLC - 10456
Location ID: 419752



Photo 82: COGIS 2017 Aerial imagery. Scout card records show that the facility is located in Garfield County, Colorado; Photo shows the facility to be in Rio Blanco County, Colorado.

