

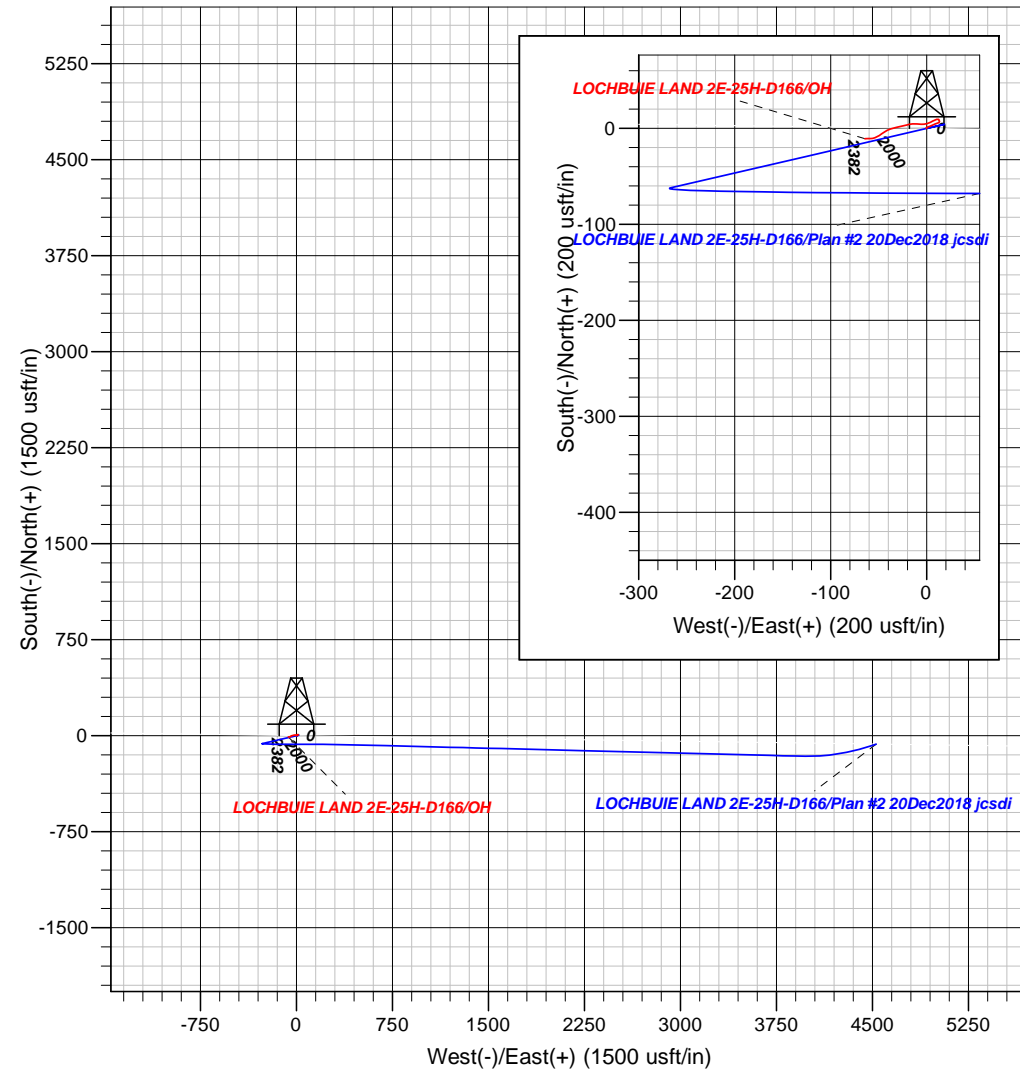
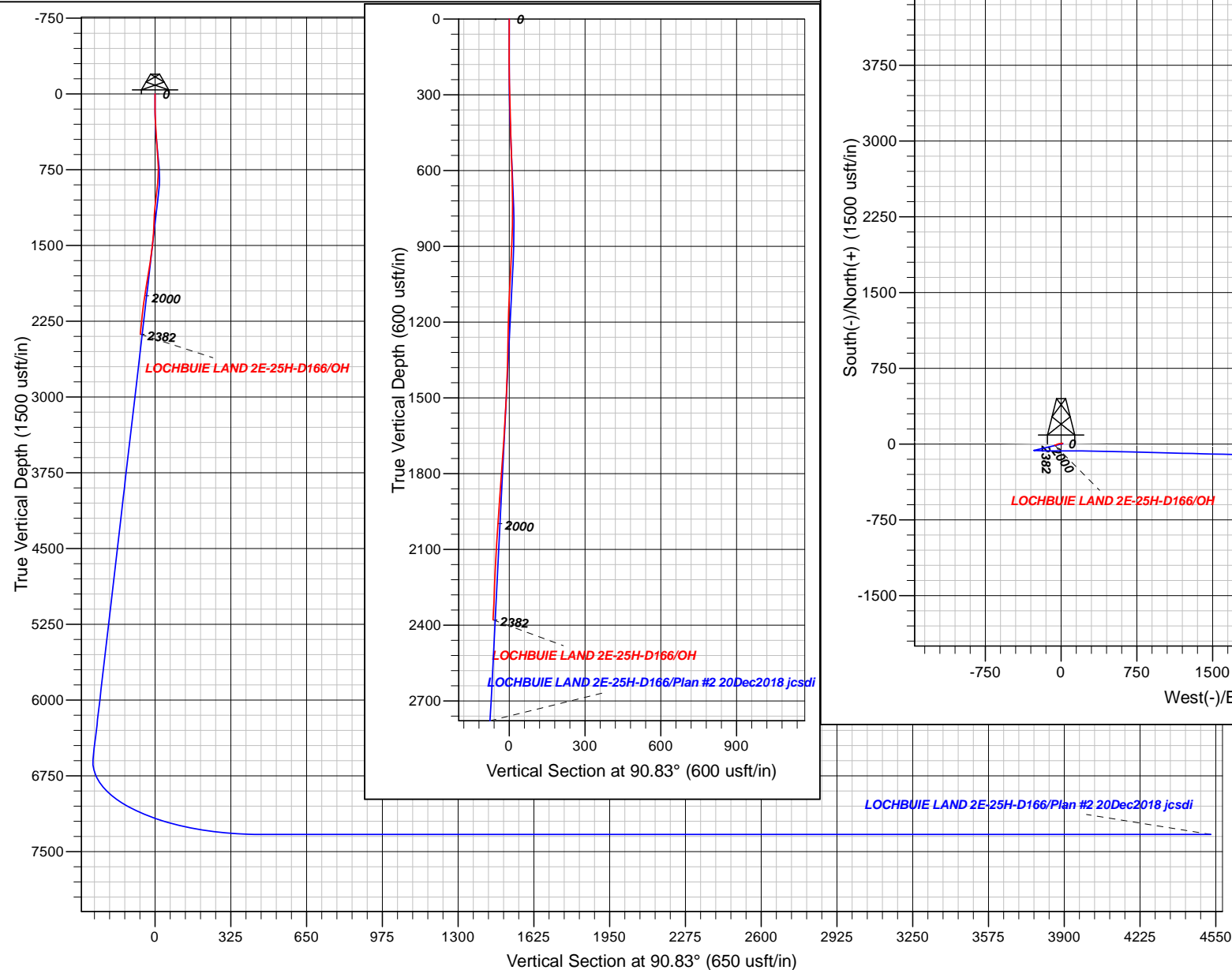


Company Name: Crestone Peak Resources
Project: DJ BASIN
Site: S25-T1N-R66W (LOCHBUIE LAND)
Well: LOCHBUIE LAND 2E-25H-D166
Wellbore: OH



WELL DETAILS: LOCHBUIE LAND 2E-25H-D166

+N/-S	+E/-W	GL 5077' & RKB 13' @ 5090.000usft (Ensign 122) 5077.000	North	East	Lat	Long
0.000	0.000		1253594.19	3214538.35	40.0269594	106.7819333
LOCHBUIE LAND 2E-25H-D166 SHL						



Design: OH (LOCHBUIE LAND 2E-25H-D166/OH)
Created By: Janie Collins Date: 14:34, December 26 2018

PROJECT DETAILS: DJ BASIN

Geodetic System: US State Plane 1983
Datum: North American Datum 1983
Ellipsoid: GRS 1980
Zone: Colorado Northern Zone

System Datum: Mean Sea Level
Local North: True