

talonlpe.com • 866.742.0742



**Nelson C-1
Groundwater Monitoring Report - Fourth Quarter 2019
Remediation Project No. 9146**

January 10, 2020

Prepared By:
Talon/LPE
1811 East Mulberry Street
Fort Collins, CO 80524

Prepared For:
Whiting Petroleum Corporation

Table of Contents

1	Introduction	1
2	Objective	1
3	Regulatory Framework.....	1
4	Site Characteristics	1
5	Groundwater Monitoring.....	2
6	Product Removal and Gauging.....	2
7	Conclusions & Recommendations	3

Attachment 1 - Figures
Attachment 2 - Tables
Attachment 3 - Analytical Report
Attachment 4 – Field Forms

1 Introduction

Talon/LPE (Talon) was contracted by Whiting Petroleum Corporation (Whiting) to conduct groundwater monitoring activities at the Nelson C1 site (Site) in Weld County, Colorado. The site is located at the northwest quarter of the southeast quarter of Section 18, Township 10 North, Range 58 West, 6th Principal Meridian at 40°50'10.72"N and 103°54'17.73"W (Attachment 1). The site is identified by the State of Colorado Oil and Gas Conservation Commission (COGCC) as Spill/Release Point Facility ID 441208 and as Remediation Project Number 9146. The Site Plan is shown on Figure 1, and the general site location is shown on Figure 6.

2 Objective

The primary objective of this document is to report on Site activities completed during the Fourth Quarter of 2019, which included groundwater monitoring and product removal.

3 Regulatory Framework

The COGCC has regulatory jurisdiction over oil and natural gas industry operations in the State of Colorado. Section 900 of the COGCC Rules is for Exploration and Production Waste Management. More specifically, Section 910 details the Concentrations and Sampling for Soil and Groundwater rules. The regulatory limits for specific analytes in groundwater are detailed in Table 910-1 and are summarized below.

Compound	COGCC Table 910-1 Groundwater Concentrations
Benzene	0.005 mg/L
Toluene	1.0 mg/L
Ethylbenzene	0.7 mg/L
Xylenes (total)	10 mg/L

4 Site Characteristics

4.1 Geography

The site is located in the Pawnee Grasslands in Weld County, which is the northeastern part of Colorado. The Grasslands are part of the Colorado Eastern Plains and are relatively flat with the exception of the Pawnee Creek which drains into the South Platte River.

4.2 Geologic Summary

Geology in this area consists of Oligocene age soils of the White River Group comprised of the Brule Formation and Chadron Formation. The Brule Formation consists of interbedded claystones, mudstones, and siltstones of grayish green color. Underlying the Brule Formation is the Chadron Formation comprised of sandstones, claystones, and conglomerates; color varies from yellowish-brown to olive-gray.

4.3 Groundwater

According to the Colorado Division of Water Resources Website, there are no water wells within 1,000-foot radius of the Site.

Depth to groundwater levels, as measured on December 19, 2019, in the 31 groundwater monitoring wells range from 28.07 (MW-8) to 45.21 (MW-29) feet below top of casing (Table 3), which are above-ground by approximately three (3) feet (ft). Several wells had measurable amounts of phase-separated hydrocarbons (PSH) during this monitoring event (Table 3 and Figure 5).

5 Groundwater Monitoring

On December 19, 2019, the 31 monitoring wells were gauged for depth to water and depth to PSH (Table 4). Wells with less than 0.10 feet of PSH were purged of three (3) well casing volumes, or until the wells became dry. On December 20, 2019, Talon personnel collected groundwater samples from these wells. Monitoring wells MW-3, MW-4, MW-7, MW-17, MW-20, MW-23, and MW-27 were not sampled due to the presence of PSH greater than 0.01 feet. Figure 5 shows groundwater elevation contours and the hydraulic gradient based on wells with no measurable PSH. The gradient has been calculated to be approximately 0.0038 ft/foot to the southeast between monitoring wells MW-10 and MW-2 and approximately 0.0052 ft/foot to the north-northwest between monitoring wells MW-26 and MW-2.

The collected groundwater samples were submitted to Summit Scientific in Golden, Colorado (Summit) for analysis of benzene, toluene, ethylbenzene, and total xylenes (BTEX) via method SW8260. Purge water generated during development and sampling was placed in poly containers within secondary containment pending off-site disposal.

Table 1 in Attachment 2 summarizes the well completion and survey information. Groundwater analytical results are summarized in Table 2 and shown on Figure 2.

Groundwater laboratory analytical results for benzene ranged from below laboratory detection limits to 9.2 mg/L (MW-8). Figure 3 shows the isoconcentration contours of dissolved-phase benzene analytical results.

Analytical results for toluene ranged from below laboratory detection limits to 10 mg/L (MW-24). Figure 4 shows the isoconcentration contours of toluene analytical results. Analytical results for ethylbenzene ranged from below laboratory detection limits to 0.81 mg/L (MW-5). Analytical results for total xylenes ranged from below laboratory detection limits to 6.6 mg/L (MW-8).

A copy of the laboratory reports and chain of custody documentation is included in Attachment 3.

6 Product Removal and Gauging

Product recovery is performed twice per week via hand-bailing on monitoring wells containing measureable levels of free product. During the summer months, product removal on five (5) monitoring wells is performed via skimmer pump system. All waste produced by product removal is stored on site in poly containers within secondary containment pending offsite disposal.

Talon gauging data from December 19, 2019, reveals the presence of PSH in monitoring wells MW-1, MW-3, MW-4, MW-6, MW-7, MW-15, MW-17, MW-20, MW-23, and MW-27 ranging from 0.03 ft (MW-6) to 1.0 ft (MW-17) (Table 3). Figure 5 shows contours of PSH thickness.

Product recovery efforts were suspended for two weeks prior to groundwater sampling activities to allow the fluid levels in each well to reach static equilibrium. Following the groundwater sampling event, product recovery efforts resumed. Table 4 summarizes PSH removal and recovery on a monthly basis. To date, over 596 gallons of free product have been recovered from the site via hand-bailing and approximately 200 gallons of product have been recovered via the skimmer pump system.

7 Conclusions & Recommendations

During the Fourth Quarter 2019, Talon collected groundwater samples from 24 of the 31 monitoring wells at the Site. Groundwater laboratory analytical results for benzene ranged from below laboratory detection limits to 9.2 mg/L (MW-8). Analytical results for toluene ranged from below laboratory detection limits to 10 mg/L (MW-24). Analytical results for ethylbenzene ranged from below laboratory detection limits to 0.81 mg/L (MW-5). Analytical results for total xylenes ranged from below laboratory detection limits to 6.6 mg/L (MW-8). PSH was measured in 10 of the 31 monitoring wells ranging from 0.03 ft (MW-6) to 1.0 ft (MW-17).

The skimmer pump system was installed at the site in Summer 2019 in monitoring wells MW-3, MW-5, MW-7, MW-17, and MW-20, and uninstalled in September 2019 due to freezing temperatures. The skimmer pump system will be reinstalled at the site again in Spring 2020.

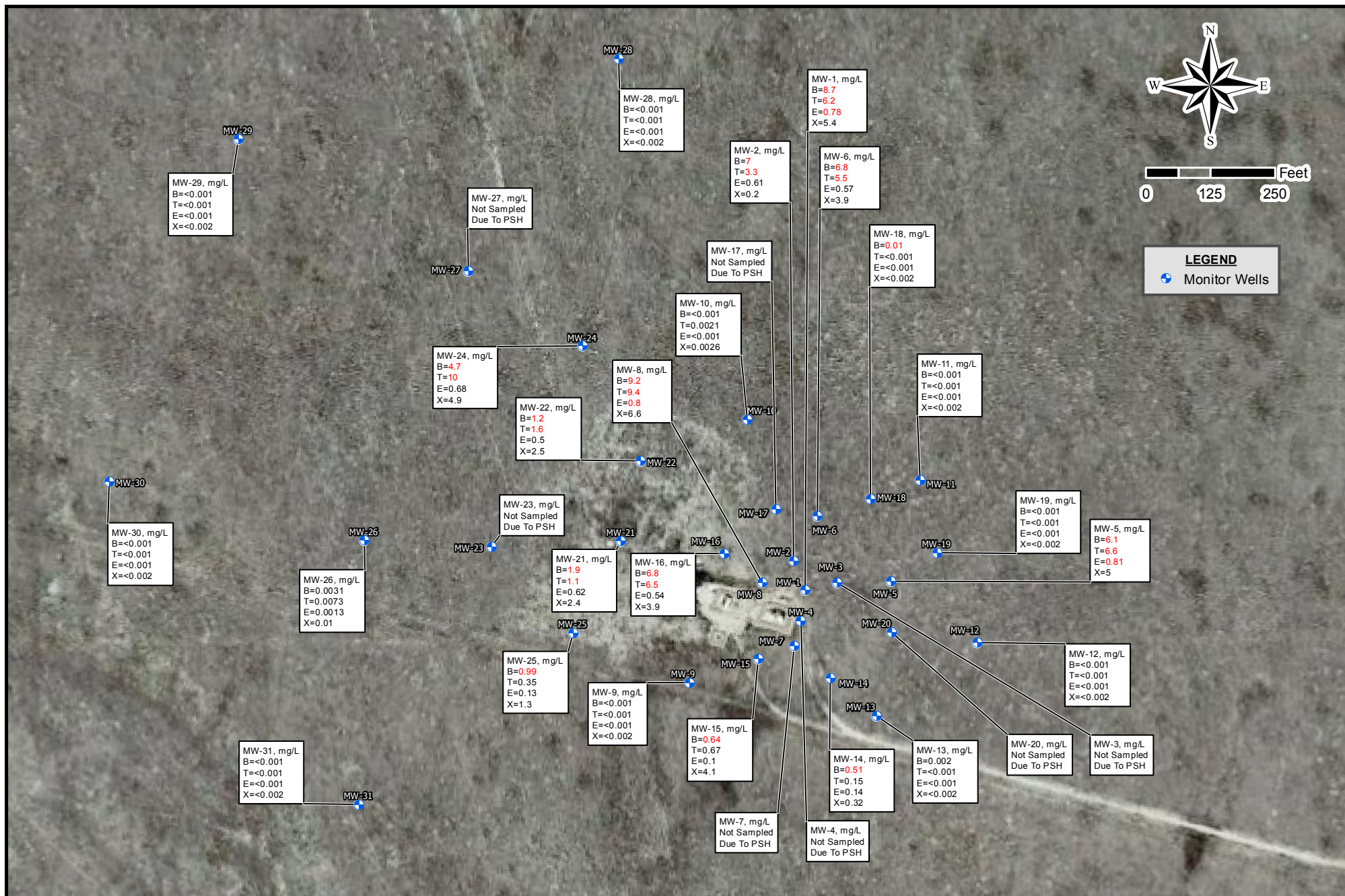
Talon will continue quarterly monitoring and product recovery at the Site. The next groundwater sampling event is anticipated to occur in March 2020.

Attachment 1
Figures



Drafted: 1/8/2020
1 in = 250 ft
Drafted By: JAI

Whiting Oil and Gas Corporation
Nelson C-1
Weld County, Colorado
Figure 1 - Site Map

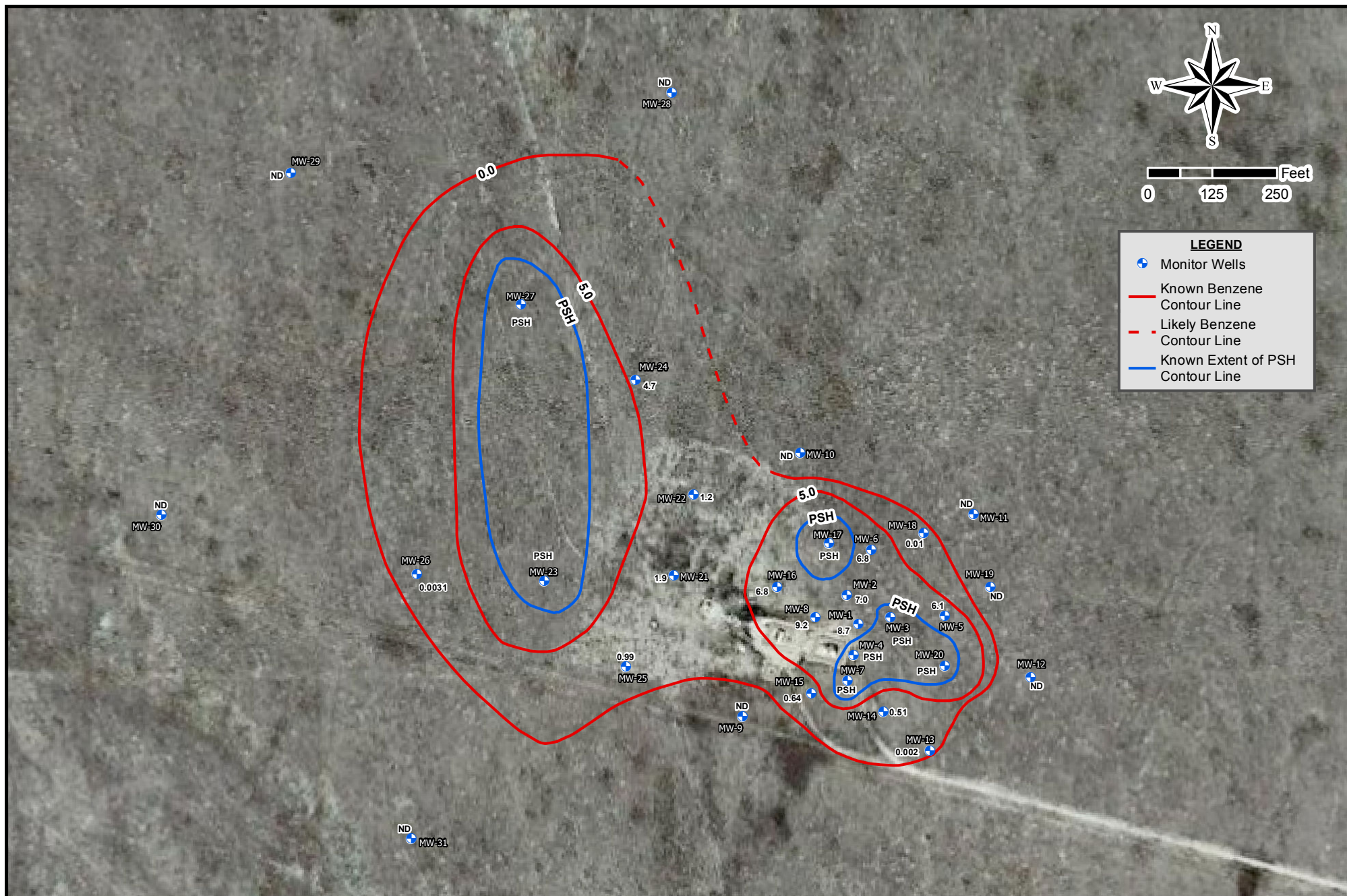


Drafted: 1/8/2020

1 in = 250 ft

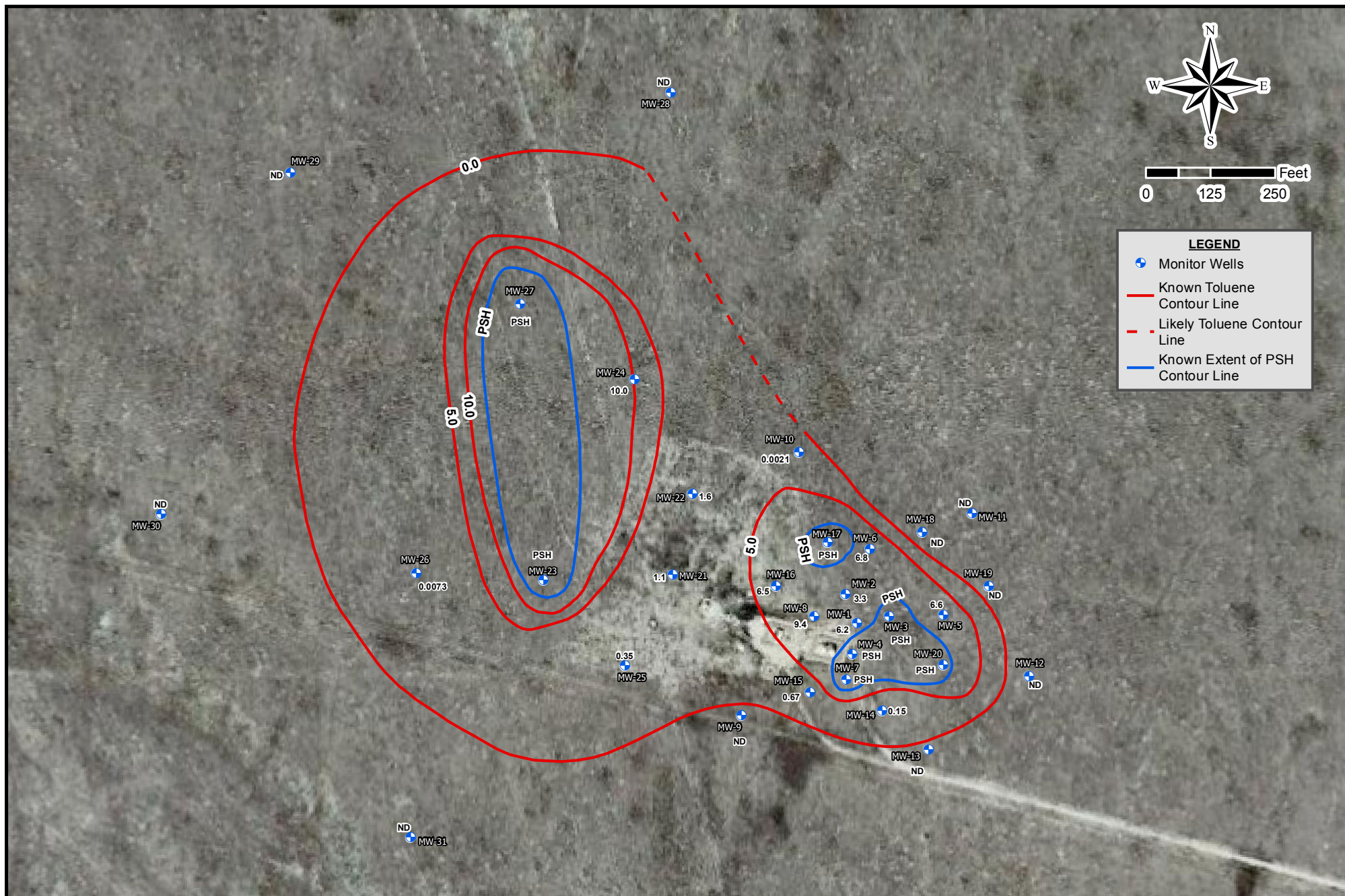
Drafted By: JAI

Whiting Oil and Gas Corporation
 Nelson C-1
 Weld County, Colorado
 Figure 2 - Groundwater Concentration Map (12/20/2019)



Drafted: 1/9/2020
1 in = 250 ft
Drafted By: JAI

Whiting Oil and Gas Corporation
Nelson C-1
Weld County, Colorado
Figure 3 - Benzene Isoconcentration Map (12/20/2019)



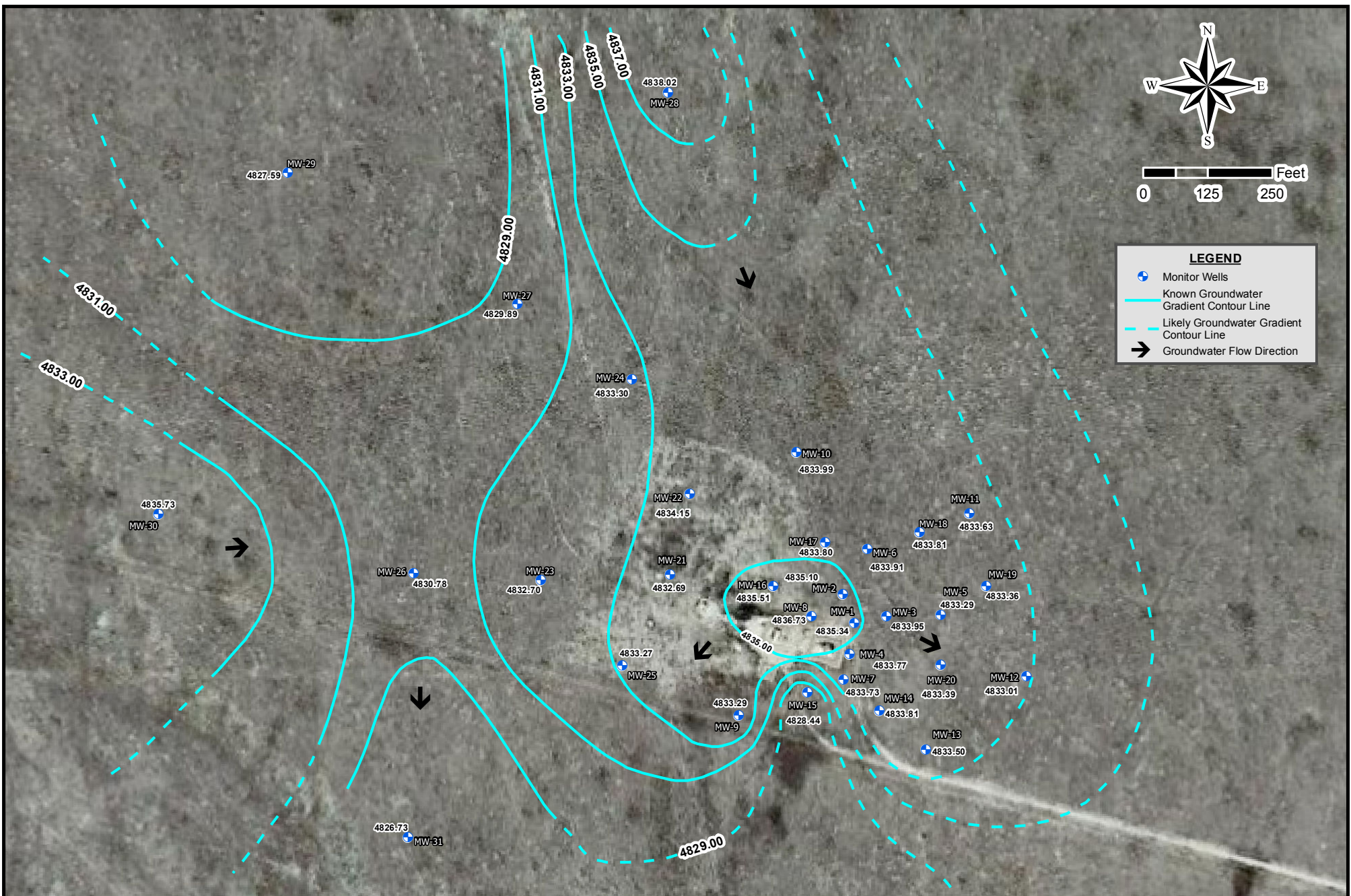
Drafted: 1/10/2020
 1 in = 250 ft
 Drafted By: JAI

Whiting Oil and Gas Corporation
 Nelson C-1
 Weld County, Colorado
 Figure 4 - Toluene Isoconcentration Map (12/20/2019)



Drafted: 1/8/2020
 1 in = 250 ft
 Drafted By: JAI

Whiting Oil and Gas Corporation
 Nelson C-1
 Weld County, Colorado
 Figure 5 - PSH Thickness Isoconcentration Map (12/19/2019)



Drafted: 1/10/2020

1 in = 250 ft

Drafted By: JAI

Whiting Oil and Gas Corporation
Nelson C-1
Weld County, Colorado
Figure 6 - Groundwater Gradient Map (12/19/2019)

Attachment 2 Tables



Table 1 - Well Information

**Whiting Oil and Gas Corporation
Nelson C-1
Weld County, Colorado**

Well ID	Latitude	Longitude	Ground Surface Elevation (ft amsl)	TOC Elevation (ft amsl)	Screen Interval (ft bgs)	Total Depth (ft)
MW-1	40.836402	-103.904669	4862.2	4865.3	19.8-39.8	40.38
MW-2	40.836552	-103.904761	4862.6	4865.8	19-39	39.50
MW-3	40.836453	-103.904461	4863.7	4866.9	19.5-39.5	40.00
MW-4	40.836238	-103.904741	4861.1	4864.0	19.5-39.5	40.00
MW-5	40.836419	-103.904070	4865.7	4868.6	20-40	40.00
MW-6	40.836722	-103.904466	4864.7	4867.6	20-45	45.00
MW-7	40.836089	-103.904824	4860.2	4863.2	20-40	40.00
MW-8	40.836469	-103.904957	4861.6	4864.8	20-40	40.00
MW-9	40.835925	-103.905525	4858.5	4861.4	17-32	35.00
MW-10	40.837318	-103.905089	4865.4	4868.3	19-39	39.00
MW-11	40.836977	-103.903889	4869.5	4872.2	19-44	44.00
MW-12	40.836108	-103.903509	4867.7	4870.6	18-38	38.00
MW-13	40.835729	-103.904222	4862.3	4864.9	20-40	40.00
MW-14	40.835936	-103.904540	4861.2	4864.3	20-40	40.00
MW-15	40.836043	-103.905063	4859.4	4861.9	19-34	34.00
MW-16	40.836609	-103.905264	4861.1	4863.9	19-39	39.00
MW-17	40.836837	-103.904898	4863.7	4866.5	19-44	44.00
MW-18	40.836881	-103.904235	4866.5	4869.2	19-44	44.00
MW-19	40.836590	-103.903776	4868.0	4870.8	19-39	39.00
MW-20	40.836173	-103.904105	4865.0	4867.5	19-39	39.00
MW-21	40.836681	-103.905988	4860.8	4863.8	20-40	40.15
MW-22	40.837108	-103.905839	4863.6	4866.7	20-40	39.68
MW-23	40.836655	-103.906884	4863.8	4866.9	14-34	34.00
MW-24	40.837700	-103.906245	4867.4	4870.5	14-44	44.00
MW-25	40.836214	-103.906318	4859.3	4862.3	14-29	29.00
MW-26	40.836693	-103.907788	4863.7	4866.8	14-34	34.00
MW-27	40.838124	-103.906993	4869.0	4872.1	24-44	44.00
MW-28	40.839217	-103.905930	4875.4	4878.2	35-55	55.00
MW-29	40.838818	-103.908562	4869.9	4872.8	30-45	45.00
MW-30	40.837023	-103.909533	4866.0	4868.9	25-35	35.00
MW-31	40.835311	-103.908502	4855.2	4858.2	20-30	30.00

TOC - Top of Casing
ft bgs - Feet Below Ground Surface
ft amsl - Feet Above Mean Sea Level
Updated July 2018



Table 2 - Groundwater Analytical Data

Whiting Oil and Gas Corporation
Nelson C-1
Weld County, Colorado

Sample ID	Lab ID	Date	Concentration (mg/L)			
			Benzene	Toluene	Ethyl-Benzene	Xylenes
COGCC Table 910-1 Concentration Levels			0.005	1	0.7	10
MW-1	1903272-01	03/26/19	11	8.9	0.76	5.3
	NS	06/11/19	Not Sampled Due to Presence of PSH			
	NS	09/24/19	Not Sampled Due to Presence of PSH			
	1912324-01	12/20/19	8.7	6.2	0.78	5.4
MW-2	1903272-02	03/26/19	4.1	3.3	0.32	5
	1906157-01	06/12/19	6.4	2.6	0.51	5.8
	1909308-01	09/24/19	1.3	1.1	0.44	2.3
	1912324-02	12/20/19	7	3.3	0.61	0.2
MW-3	NS	03/26/19	Not Sampled Due to Presence of PSH			
	NS	06/11/19	Not Sampled Due to Presence of PSH			
	NS	09/24/19	Not Sampled Due to Presence of PSH			
	NS	12/20/19	Not Sampled Due to Presence of PSH			
MW-4	NS	03/26/19	Not Sampled Due to Presence of PSH			
	NS	06/11/19	Not Sampled Due to Presence of PSH			
	NS	09/24/19	Not Sampled Due to Presence of PSH			
	NS	12/20/19	Not Sampled Due to Presence of PSH			
MW-5	1903272-03	03/26/19	6	9.6	0.72	4.6
	1906157-02	06/12/19	8.2	9.3	0.95	5.8
	1909308-02	09/24/19	6.4	7.10	0.82	4.5
	1912324-03	12/20/19	6.1	6.6	0.81	5
MW-6	1903272-04	03/26/19	7.7	8.4	0.69	4.8
	NS	06/12/19	Not Sampled Due to Presence of PSH			
	1909308-03	09/24/19	9.4	10.0	0.9	4.8
	1912324-04	12/20/19	6.8	5.5	0.57	3.9
MW-7	NS	03/26/19	Not Sampled Due to Presence of PSH			
	NS	06/12/19	Not Sampled Due to Presence of PSH			
	NS	09/24/19	Not Sampled Due to Presence of PSH			
	NS	12/20/19	Not Sampled Due to Presence of PSH			
MW-8	1903272-05	03/26/19	10.0	9.7	0.62	5
	1906157-03	06/12/19	12.0	17.0	1.1	7.6
	1909308-04	09/24/19	12.0	11.0	0.87	6.2
	1912324-05	12/20/19	9.2	9.4	0.8	6.6
MW-9	1903272-06	03/26/19	<0.001	<0.001	<0.001	<0.002
	1906134-01	06/11/19	<0.001	<0.001	<0.001	<0.002
	1909308-05	09/24/19	<0.001	<0.001	<0.001	<0.002
	19912379-01	12/23/19	<0.001	<0.001	<0.001	<0.002
MW-10	1903272-07	03/26/19	<0.001	0.0012	<0.001	<0.002
	1906134-02	06/11/19	<0.001	<0.001	<0.001	<0.002
	1909308-06	09/24/19	<0.001	<0.001	<0.001	<0.002
	1912324-06	12/20/19	<0.001	0.0021	<0.001	0.0026
MW-11	1903272-08	03/26/19	<0.001	<0.001	<0.001	<0.002
	1906134-03	06/11/19	<0.001	<0.001	<0.001	<0.002
	1909308-07	09/24/19	<0.001	<0.001	<0.001	<0.002
	1912324-07	12/20/19	<0.001	<0.001	<0.001	<0.002
MW-12	1903272-09	03/26/19	<0.001	<0.001	<0.001	<0.002
	1906134-04	06/11/19	<0.001	<0.001	<0.001	<0.002
	1909308-08	09/24/19	<0.001	<0.001	<0.001	<0.002
	1912324-08	12/20/19	<0.001	<0.001	<0.001	<0.002
MW-13	1903272-10	03/26/19	<0.001	<0.001	<0.001	<0.002
	1906134-05	06/11/19	<0.001	<0.001	<0.001	<0.002
	1909308-09	09/24/19	<0.001	<0.001	<0.001	<0.002
	1912324-09	12/20/19	0.002	<0.001	<0.001	<0.002



Table 2 - Groundwater Analytical Data

Whiting Oil and Gas Corporation
Nelson C-1
Weld County, Colorado

Sample ID	Lab ID	Date	Concentration (mg/L)			
			Benzene	Toluene	Ethyl-Benzene	Xylenes
COGCC Table 910-1 Concentration Levels			0.005	1	0.7	10
MW-14	1903272-11	03/26/19	0.9	<0.001	0.0014	0.0013
	1906134-06	06/11/19	0.8	0.14	0.16	0.36
	1909308-10	09/24/19	<0.001	0.094	0.15	0.29
	1912324-10	12/20/19	0.51	0.15	0.14	0.32
MW-15	NS	03/26/19	Not Sampled Due to Presence of PSH			
	1906157-04	06/12/19	2.2	3.5	0.76	8.2
	1909308-11	09/24/19	1.2	1.2	0.26	4.4
	1912324-11	12/20/19	0.64	0.67	0.1	4.1
MW-16	1903272-12	03/26/19	8.9	9.2	0.61	4.3
	1906157-05	06/12/19	8.7	11	0.68	5.2
	1909308-12	09/24/19	7.6	8.1	0.8	4.9
	1912324-12	12/20/19	6.8	6.5	0.54	3.9
MW-17	NS	03/26/19	Not Sampled Due to Presence of PSH			
	NS	03/26/19	Not Sampled Due to Presence of PSH			
	NS	09/24/19	Not Sampled Due to Presence of PSH			
	NS	12/20/19	Not Sampled Due to Presence of PSH			
MW-18	1903272-13	03/26/19	0.0018	<0.001	<0.001	<0.002
	1906134-07	06/11/19	0.015	<0.001	<0.001	<0.002
	1909308-13	09/24/19	<0.001	<0.001	<0.001	<0.002
	1912324-13	12/20/19	0.01	<0.001	<0.001	<0.002
MW-19	1812346-07	03/26/19	<0.001	<0.001	<0.001	<0.002
	1906134-08	06/11/19	<0.001	<0.001	<0.001	<0.002
	1909308-14	09/24/19	<0.001	<0.001	<0.001	<0.002
	1912324-14	12/20/19	<0.001	<0.001	<0.001	<0.002
MW-20	NS	03/26/19	Not Sampled Due to Presence of PSH			
	NS	06/12/19	Not Sampled Due to Presence of PSH			
	NS	09/24/19	Not Sampled Due to Presence of PSH			
	NS	12/20/19	Not Sampled Due to Presence of PSH			
MW-21	1903272-15	03/26/19	1.5	3.5	0.74	4.6
	1906134-09	06/11/19	2.5	4.7	0.77	4.1
	1909308-15	09/24/19	2.8	4.7	1.00	5.3
	1912324-15	12/20/19	1.9	1.1	0.62	2.4
MW-22	1903272-16	03/26/19	1.6	2.9	0.52	2.9
	1906134-10	06/11/19	2.4	4.8	0.67	3.8
	1909308-16	09/24/19	2.1	3.9	0.66	3.6
	1912324-16	12/20/19	1.2	1.6	0.5	2.5
MW-23	NS	03/26/19	Not Sampled Due to Presence of PSH			
	NS	06/12/19	Not Sampled Due to Presence of PSH			
	NS	09/24/19	Not Sampled Due to Presence of PSH			
	NS	12/20/19	Not Sampled Due to Presence of PSH			
MW-24	1903272-17	03/26/19	5.1	11	0.62	4.4
	1906157-06	06/12/19	5.6	13	0.87	6.1
	1909308-17	09/24/19	5.0	10	0.78	5.3
	1912324-17	12/20/19	4.7	10	0.68	4.9
MW-25	1903272-18	03/26/19	1.9	1.5	0.18	2.6
	1906134-11	06/11/19	1.5	0.35	0.22	2.7
	1909308-18	09/24/19	1.1	0.26	0.13	1.6
	1912324-18	12/20/19	0.99	0.35	0.13	1.3
MW-26	1903272-19	03/26/19	<0.001	<0.001	<0.001	<0.002
	1906134-12	06/11/19	<0.001	<0.001	<0.001	<0.002
	1909308-19	09/24/19	<0.001	<0.001	<0.001	<0.002
	1912324-19	12/20/19	0.0031	0.0073	0.0013	0.01



Table 2 - Groundwater Analytical Data

**Whiting Oil and Gas Corporation
Nelson C-1
Weld County, Colorado**

Sample ID	Lab ID	Date	Concentration (mg/L)			
			Benzene	Toluene	Ethyl-Benzene	Xylenes
COGCC Table 910-1 Concentration Levels			0.005	1	0.7	10
MW-27	NS	03/26/19	Not Sampled Due to Presence of PSH			
	NS	06/12/19	Not Sampled Due to Presence of PSH			
	NS	09/24/19	Not Sampled Due to Presence of PSH			
	NS	12/20/19	Not Sampled Due to Presence of PSH			
MW-28	1903272-20	03/26/19	<0.001	<0.001	<0.001	<0.002
	1906134-13	06/11/19	<0.001	<0.001	<0.001	<0.002
	1909308-20	09/24/19	<0.001	<0.001	<0.001	<0.002
	1912324-20	12/20/19	<0.001	<0.001	<0.001	<0.002
MW-29	1903272-21	03/26/19	<0.001	<0.001	<0.001	<0.002
	1906134-14	06/11/19	<0.001	<0.001	<0.001	<0.002
	1909308-21	09/24/19	<0.001	<0.001	<0.001	<0.002
	1912324-21	12/20/19	<0.001	<0.001	<0.001	<0.002
MW-30	1903272-22	03/26/19	<0.001	<0.001	<0.001	<0.002
	1906134-15	06/11/19	<0.001	<0.001	<0.001	<0.002
	1909308-22	09/24/19	<0.001	<0.001	<0.001	<0.002
	1912324-22	12/20/19	<0.001	<0.001	<0.001	<0.002
MW-31	1903272-23	03/26/19	<0.001	<0.001	<0.001	<0.002
	1906134-16	06/11/19	<0.001	<0.001	<0.001	<0.002
	1909308-23	09/24/19	<0.001	<0.001	<0.001	<0.002
	1912324-23	12/20/19	<0.001	<0.001	<0.001	<0.002

mg/L -milligrams per liter
 < - Analytical result is less than the reporting limit
 COGCC - Colorado Oil and Gas Conservation Commission
 NS - Not Sampled
 PSH - Phase-Separated Hydrocarbons



Table 3 - Gauging Data

Whiting Oil and Gas Corporation
Nelson C-1
Weld County, Colorado

Well ID	Top of Casing Elevation (ft amsl)	Total Depth of Well (ft)	Date Gauged	Depth to Product (ft btoc)	DTW (ft btoc)	Product Thickness (ft)	Potentiometric Surface Elevation (ft)
MW-1	4865.30	40.38	11/4/2015	NA	36.49	0.00	4828.81
			12/3/2015	NA	30.88	0.00	4834.42
			12/8/2015	30.62	30.63	0.01	4834.68
			12/22/2015	NA	31.46	0.00	4833.84
			12/30/2015	NA	32.03	0.00	4833.27
			1/13/2016	NA	38.05	0.00	4827.25
			1/21/2016	NA	31.08	0.00	4834.22
			1/27/2016	31.10	31.13	0.03	4834.19
			2/8/2016	31.24	31.29	0.05	4834.05
			2/15/2016	30.90	30.92	0.02	4834.40
			2/16/2016	30.96	30.99	0.03	4834.33
			2/17/2016	NA	32.27	0.00	4833.03
			2/19/2016	NA	31.04	0.00	4834.26
			2/24/2016	NA	31.19	0.00	4834.11
			2/29/2016	NA	30.95	0.00	4834.35
			3/8/2016	NA	32.67	0.00	4832.63
			3/15/2016	NA	32.95	0.00	4832.35
			3/22/2016	NA	33.02	0.00	4832.28
			3/29/2016	NA	33.04	0.00	4832.26
			4/5/2016	NA	33.22	0.00	4832.08
			4/19/2016	NA	31.70	0.00	4833.60
			4/26/2016	NA	32.78	0.00	4832.52
			5/5/2016	NA	31.41	0.00	4833.89
			6/6/2016	31.35	31.36	0.01	4833.95
			6/20/2016	31.38	31.42	0.04	4833.91
			8/11/2016	NA	30.88	0.00	4834.42
			9/15/2016	NA	30.82	0.00	4834.48
			12/15/2016	30.98	30.99	0.01	4834.32
			3/16/2017	31.45	31.49	0.04	4833.84
			6/15/2017	31.91	31.95	0.04	4833.38
			9/14/2017	30.75	30.78	0.03	4834.54
			12/19/2017	NA	30.92	0.00	4834.38
			3/15/2018	30.91	31.02	0.11	4834.37
			6/11/2018	31.11	31.19	0.08	4834.17
			9/10/2018	30.11	30.22	0.11	4835.17
			12/27/2018	30.90	30.99	0.09	4834.38
			3/25/2019	30.83	30.90	0.07	4834.46
			6/10/2019	30.31	30.32	0.01	4834.99
			9/24/2019	30.65	30.75	0.10	4834.63
			12/19/2019	29.95	30.02	0.07	4835.34
MW-2	4865.8	39.50	11/4/2015	31.15	31.20	0.05	4834.64
			12/3/2015	31.60	31.62	0.02	4834.20
			12/8/2015	31.50	31.52	0.02	4834.30
			12/22/2015	NA	31.29	0.00	4834.51
			12/30/2015	31.93	31.94	0.01	4833.87
			1/13/2016	NA	31.55	0.00	4834.25
			1/21/2016	NA	31.71	0.00	4834.09
			1/27/2016	NA	31.72	0.00	4834.08
			2/8/2016	31.90	31.92	0.02	4833.90
			2/15/2016	31.53	31.58	0.05	4834.26
			2/16/2016	31.63	31.66	0.03	4834.16
			2/17/2016	32.31	32.35	0.04	4833.48
			2/19/2016	31.68	31.73	0.05	4834.11
			2/24/2016	NA	31.80	0.00	4834.00
			2/29/2016	31.56	31.63	0.07	4834.23
			3/8/2016	NA	32.25	0.00	4833.55
			3/15/2016	NA	32.37	0.00	4833.43
			3/22/2016	NA	32.21	0.00	4833.59
			3/29/2016	NA	32.21	0.00	4833.59
			4/5/2016	NA	32.42	0.00	4833.38
			4/19/2016	32.25	32.27	0.02	4833.55
			4/26/2016	NA	32.36	0.00	4833.44
			5/5/2016	NA	32.12	0.00	4833.68
			6/6/2016	32.10	32.14	0.04	4833.69
			6/20/2016	32.15	32.17	0.02	4833.65
			8/11/2016	NA	31.43	0.00	4834.37
			9/15/2016	31.20	31.27	0.07	4834.59
			12/15/2016	38.31	38.50	0.49	4827.69
			3/16/2017	31.45	31.49	0.04	4834.34
			6/15/2017	32.15	32.20	0.05	4833.64
			9/14/2017	30.78	30.80	0.02	4835.02
			12/19/2017	NA	31.24	0.00	4834.56
			3/15/2018	31.14	31.16	0.02	4834.66
			6/11/2018	NA	30.57	0.00	4835.23
			9/10/2018	NA	29.39	0.00	4836.41
			12/27/2018	NA	30.27	0.00	4835.53
			3/25/2019	NA	24.76	0.00	4841.04
			6/11/2019	NA	27.42	0.00	4838.38
			9/24/2019	NA	30.29	0.00	4835.51
			12/9/2019	NA	30.70	0.00	4835.10



Table 3 - Gauging Data

Whiting Oil and Gas Corporation
Nelson C-1
Weld County, Colorado

Well ID	Top of Casing Elevation (ft amsl)	Total Depth of Well (ft)	Date Gauged	Depth to Product (ft btoc)	DTW (ft btoc)	Product Thickness (ft)	Potentiometric Surface Elevation (ft)
MW-3	4866.9	40.00	11/4/2015	35.61	36.52	0.91	4831.11
			12/3/2015	34.74	35.89	1.15	4831.93
			12/8/2015	34.77	35.62	0.85	4831.96
			12/22/2015	34.44	35.36	0.92	4832.28
			12/30/2015	35.07	35.93	0.86	4831.66
			1/13/2016	37.32	37.82	0.50	4829.48
			1/21/2016	33.70	34.78	1.08	4832.99
			1/27/2016	33.62	35.13	1.51	4832.98
			2/8/2016	33.47	35.88	2.41	4832.96
			2/15/2016	32.95	36.07	3.12	4833.34
			2/16/2016	32.98	36.16	3.18	4833.30
			2/17/2016	35.38	36.50	1.12	4831.30
			2/19/2016	33.80	35.09	1.29	4832.85
			2/24/2016	33.58	35.29	1.71	4832.98
			2/29/2016	33.46	35.37	1.91	4833.07
			3/8/2016	33.68	34.69	1.01	4833.02
			3/15/2016	33.65	33.70	0.05	4833.24
			3/22/2016	34.55	35.55	1.00	4832.15
			3/29/2016	34.48	35.38	0.90	4832.24
			4/5/2016	34.95	35.05	0.10	4831.93
			4/19/2016	34.01	34.71	0.70	4832.75
			4/26/2016	34.45	35.04	0.59	4832.33
			5/5/2016	35.37	36.11	0.74	4831.38
			6/6/2016	33.91	34.82	0.91	4832.81
			6/20/2016	33.75	35.32	1.57	4832.84
			8/11/2016	33.90	34.60	0.70	4832.86
			9/15/2016	33.71	34.41	0.70	4833.05
			12/15/2016	33.79	34.30	0.51	4833.01
			3/16/2017	34.87	35.72	0.85	4831.86
			6/16/2017	33.90	34.70	0.80	4832.84
			9/14/2017	NA	Dry	NA	NA
			12/19/2017	33.40	33.61	0.21	4833.46
			3/15/2018	32.92	33.11	0.19	4833.94
			6/11/2018	33.20	33.88	0.68	4833.57
			9/10/2018	32.60	32.74	0.14	4834.27
			12/27/2018	32.55	33.02	0.47	4834.26
			3/26/2019	33.04	33.45	0.41	4833.78
			6/11/2019	32.70	32.95	0.41	4834.28
			9/24/2019	32.71	33.64	0.93	4834.01
			12/19/2019	32.89	33.18	0.29	4833.95
MW-4	4864	40.00	11/4/2015	NA	35.69	0.00	4828.31
			12/3/2015	NA	37.50	0.00	4826.50
			12/8/2015	NA	35.78	0.00	4828.22
			12/22/2015	NA	34.55	0.00	4829.45
			12/30/2015	NA	35.60	0.00	4828.40
			1/13/2016	NA	38.05	0.00	4825.95
			1/21/2016	NA	34.28	0.00	4829.72
			1/27/2016	NA	30.36	0.00	4833.64
			2/8/2016	NA	29.24	0.00	4834.76
			2/15/2016	NA	29.03	0.00	4834.97
			2/16/2016	NA	29.02	0.00	4834.98
			2/17/2016	NA	36.60	0.00	4827.40
			2/19/2016	NA	33.94	0.00	4830.06
			2/24/2016	NA	29.81	0.00	4834.19
			2/29/2016	NA	29.51	0.00	4834.49
			3/8/2016	NA	33.15	0.00	4830.85
			3/15/2016	NA	35.27	0.00	4828.73
			3/22/2016	NA	35.13	0.00	4828.87
			3/29/2016	NA	35.02	0.00	4828.98
			4/5/2016	NA	35.94	0.00	4828.06
			4/19/2016	NA	33.14	0.00	4830.86
			4/26/2016	NA	29.88	0.00	4834.12
			5/5/2016	NA	29.36	0.00	4834.64
			6/6/2016	NA	29.35	0.00	4834.65
			6/20/2016	NA	29.31	0.00	4834.69
			8/11/2016	NA	29.00	0.00	4835.00
			9/15/2016	NA	29.03	0.00	4834.97
			12/15/2016	NA	29.48	0.00	4834.52
			3/16/2017	NA	29.89	0.00	4834.11
			6/15/2017	NA	31.90	0.00	4832.10
			9/14/2017	NA	29.75	0.00	4834.25
			12/19/2017	NA	29.84	0.00	4834.16
			3/15/2018	NA	29.90	0.00	4834.10
			6/11/2018	NA	30.59	0.00	4833.41
			9/10/2018	NA	30.40	0.00	4833.60
			12/27/2018	NA	30.12	0.00	4833.88
			3/25/2019	29.91	30.06	0.15	4834.06
			6/10/2019	29.98	30.35	0.37	4833.95
			9/24/2019	29.90	30.25	0.35	4834.03
			12/19/2019	30.05	30.35	0.15	4833.77



Table 3 - Gauging Data

Whiting Oil and Gas Corporation
Nelson C-1
Weld County, Colorado

Well ID	Top of Casing Elevation (ft amsl)	Total Depth of Well (ft)	Date Gauged	Depth to Product (ft btoc)	DTW (ft btoc)	Product Thickness (ft)	Potentiometric Surface Elevation (ft)
MW-5	4868.6	40.00	2/15/2016	40.31	40.41	0.10	4828.27
			2/16/2016	39.95	40.09	0.14	4828.62
			2/17/2016	NA	Dry	NA	NA
			2/19/2016	39.78	40.07	0.29	4828.76
			2/24/2016	38.60	39.19	0.59	4829.88
			2/29/2016	37.66	38.56	0.90	4830.76
			3/8/2016	36.66	37.95	1.29	4831.69
			3/15/2016	36.20	36.35	0.15	4832.37
			3/22/2016	35.95	37.80	1.85	4832.29
			3/29/2016	35.78	36.51	0.73	4832.68
			4/5/2016	NA	35.74	0.00	4832.86
			4/19/2016	35.65	38.30	2.65	4832.43
			4/26/2016	35.48	38.30	2.82	4832.57
			5/5/2016	35.52	35.53	0.01	4833.08
			6/6/2016	39.08	39.85	0.77	4829.37
			6/20/2016	37.22	38.46	1.24	4831.14
			8/11/2016	39.08	39.65	0.57	4829.41
			9/15/2016	37.18	38.37	1.19	4831.19
			12/15/2016	37.05	38.22	1.17	4831.32
			3/16/2017	37.10	38.22	1.12	4831.28
			6/15/2017	36.86	37.90	1.04	4831.54
			9/14/2017	NA	Dry	NA	NA
			12/19/2017	35.87	36.00	0.13	4832.70
			3/15/2018	35.59	35.74	0.15	4832.98
			6/11/2018	35.85	36.05	0.20	4832.71
			9/10/2018	34.74	34.88	0.14	4833.83
			12/27/2018	NA	35.26	0.00	4833.34
			3/25/2019	35.70	35.75	0.05	4832.89
			6/11/2019	NA	35.35	0.00	4833.25
			9/24/2019	NA	35.45	0.00	4833.15
			12/19/2019	NA	35.31	0.00	4833.29
MW-6	4867.6	45.00	2/15/2016	35.32	36.60	1.28	4832.03
			2/16/2016	35.33	36.91	1.58	4831.96
			2/17/2016	35.95	36.14	0.19	4831.61
			2/19/2016	35.55	36.50	0.95	4831.86
			2/24/2016	35.30	37.55	2.25	4831.86
			2/29/2016	34.76	38.19	3.43	4832.17
			3/8/2016	34.44	39.14	4.70	4832.24
			3/15/2016	34.28	38.44	4.16	4832.50
			3/22/2016	33.92	39.90	5.98	4832.51
			3/29/2016	33.88	40.03	6.15	4832.51
			4/5/2016	34.02	39.58	5.56	4832.49
			4/19/2016	34.11	40.91	6.80	4832.16
			4/26/2016	33.80	38.87	5.07	4832.81
			5/5/2016	34.01	40.78	6.77	4832.26
			6/6/2016	33.94	40.80	6.86	4832.32
			6/20/2016	34.72	39.50	4.78	4831.94
			8/11/2016	35.53	36.32	0.79	4831.92
			9/15/2016	35.17	36.99	1.82	4832.07
			12/15/2016	35.11	36.27	1.16	4832.26
			3/16/2017	35.19	36.20	1.01	4832.21
			6/15/2017	35.25	36.20	0.95	4832.16
			9/14/2017	34.81	35.09	0.28	4832.74
			12/19/2017	34.43	34.87	0.44	4833.08
			3/15/2018	33.95	33.97	0.02	4833.65
			6/11/2018	NA	34.00	0.00	4833.60
			9/10/2018	33.50	34.98	1.48	4833.81
			12/27/2018	33.46	33.50	0.04	4834.13
			3/25/2019	33.96	33.99	0.03	4833.63
			6/11/2019	33.65	33.75	0.10	4833.93
			9/24/2019	NA	33.81	0.00	4833.79
			12/19/2019	33.68	33.71	0.03	4833.91



Table 3 - Gauging Data

Whiting Oil and Gas Corporation
Nelson C-1
Weld County, Colorado

Well ID	Top of Casing Elevation (ft amsl)	Total Depth of Well (ft)	Date Gauged	Depth to Product (ft btoc)	DTW (ft btoc)	Product Thickness (ft)	Potentiometric Surface Elevation (ft)
MW-7	4863.2	40.00	2/15/2016	31.86	34.29	2.43	4830.86
			2/16/2016	30.00	33.03	3.03	4832.61
			2/17/2016	35.38	36.50	1.12	4827.60
			2/19/2016	30.26	32.22	1.96	4832.56
			2/24/2016	28.01	30.35	2.34	4834.73
			2/29/2016	27.75	29.91	2.16	4835.03
			3/8/2016	27.55	29.73	2.18	4835.22
			3/15/2016	27.61	29.90	2.29	4835.14
			3/22/2016	27.58	29.93	2.35	4835.16
			3/29/2016	27.55	29.95	2.40	4835.18
			4/5/2016	27.75	30.28	2.53	4834.95
			4/19/2016	27.89	27.91	0.02	4835.31
			4/26/2016	27.44	30.06	2.62	4835.25
			5/5/2016	27.81	29.09	1.28	4835.14
			6/6/2016	28.62	30.50	1.88	4834.21
			6/20/2016	28.10	29.61	1.51	4834.80
			8/11/2016	28.68	29.30	0.62	4834.40
			9/15/2016	28.38	29.27	0.89	4834.65
			12/15/2016	28.67	29.32	0.65	4834.40
			3/16/2017	28.96	29.66	0.70	4834.10
			6/15/2017	29.21	29.89	0.68	4833.86
			9/14/2017	NA	Dry	NA	NA
			12/19/2017	28.87	30.56	1.69	4834.00
			3/15/2018	28.90	29.56	0.66	4834.17
			6/11/2018	29.39	29.68	0.29	4833.75
			9/10/2018	29.03	29.36	0.33	4834.11
			12/27/2018	29.07	29.42	0.35	4834.06
			3/25/2019	29.41	29.65	0.24	4833.74
			6/11/1994	29.36	29.72	0.36	4833.77
			9/24/2019	29.35	29.60	0.25	4833.80
			12/19/2019	29.41	29.72	0.31	4833.73
MW-8	4864.8	40.00	2/15/2016	NA	35.85	0.00	4828.95
			2/16/2016	NA	34.10	0.00	4830.70
			2/17/2016	NA	35.09	0.00	4829.71
			2/19/2016	NA	32.57	0.00	4832.23
			2/24/2016	NA	28.81	0.00	4835.99
			2/29/2016	NA	27.45	0.00	4837.35
			3/8/2016	NA	27.14	0.00	4837.66
			3/15/2016	NA	27.25	0.00	4837.55
			3/22/2016	NA	33.80	0.00	4831.00
			3/29/2016	NA	27.38	0.00	4837.42
			4/5/2016	27.70	27.73	0.03	4837.09
			4/19/2016	28.04	28.06	0.02	4836.76
			4/26/2016	27.72	27.75	0.03	4837.07
			5/5/2016	28.28	28.30	0.02	4836.52
			6/6/2016	28.46	28.52	0.06	4836.33
			6/20/2016	NA	27.83	0.00	4836.97
			8/11/2016	NA	26.28	0.00	4838.52
			9/15/2016	26.35	26.36	0.01	4838.45
			12/15/2016	NA	27.45	0.00	4837.35
			3/16/2017	28.06	28.07	0.01	4836.74
			6/15/2017	NA	27.15	0.00	4837.65
			9/14/2017	NA	26.04	0.00	4838.76
			12/19/2017	NA	28.24	0.00	4836.56
			3/15/2018	NA	27.81	0.00	4836.99
			6/11/2018	NA	26.67	0.00	4838.13
			9/10/2018	NA	26.45	0.00	4838.35
			12/27/2018	NA	28.03	0.00	4836.77
			3/25/2019	NA	25.31	0.00	4839.49
			6/11/2019	NA	26.60	0.00	4838.20
			9/24/2019	NA	27.29	0.00	4837.51
			12/19/2019	NA	28.07	0.00	4836.73



Table 3 - Gauging Data

Whiting Oil and Gas Corporation
Nelson C-1
Weld County, Colorado

Well ID	Top of Casing Elevation (ft amsl)	Total Depth of Well (ft)	Date Gauged	Depth to Product (ft btoc)	DTW (ft btoc)	Product Thickness (ft)	Potentiometric Surface Elevation (ft)
MW-9	4861.4	35.00	3/15/2016	NA	33.45	0.00	4827.95
			3/21/2016	NA	31.84	0.00	4829.56
			3/22/2016	NA	33.80	0.00	4827.60
			3/29/2016	NA	31.85	0.00	4829.55
			4/5/2016	NA	29.98	0.00	4831.42
			4/19/2016	NA	27.48	0.00	4833.92
			4/26/2016	NA	26.80	0.00	4834.60
			5/5/2016	NA	26.61	0.00	4834.79
			6/6/2016	NA	26.50	0.00	4834.90
			6/20/2016	NA	26.40	0.00	4835.00
			8/11/2016	NA	26.52	0.00	4834.88
			9/15/2016	NA	26.75	0.00	4834.65
			12/15/2016	NA	27.09	0.00	4834.31
			3/16/2017	NA	27.44	0.00	4833.96
			6/15/2017	NA	27.72	0.00	4833.68
			9/14/2017	NA	27.84	0.00	4833.56
			12/19/2017	NA	28.76	0.00	4832.64
			3/15/2018	NA	27.48	0.00	4833.92
			6/11/2018	NA	27.61	0.00	4833.79
			9/10/2018	NA	27.85	0.00	4833.55
			12/27/2018	NA	27.64	0.00	4833.76
			3/26/2019	NA	27.65	0.00	4833.75
			6/10/2019	NA	27.93	0.00	4833.47
			9/24/2019	NA	27.71	0.00	4833.69
			12/19/2019	NA	28.11	0.00	4833.29
MW-10	4868.3	39	3/15/2016	NA	Dry	NA	NA
			3/21/2016	NA	Dry	NA	NA
			3/22/2016	NA	Dry	NA	NA
			3/29/2016	NA	Dry	NA	NA
			4/5/2016	NA	39.12	0.00	4829.18
			4/19/2016	NA	38.19	0.00	4830.11
			4/26/2016	NA	37.78	0.00	4830.52
			5/5/2016	NA	37.58	0.00	4830.72
			6/6/2016	NA	37.35	0.00	4830.95
			6/20/2016	NA	37.32	0.00	4830.98
			8/11/2016	NA	37.20	0.00	4831.10
			9/15/2016	NA	37.13	0.00	4831.17
			12/15/2016	NA	36.89	0.00	4831.41
			3/16/2017	NA	36.75	0.00	4831.55
			6/15/2017	NA	36.41	0.00	4831.89
			9/14/2017	NA	35.78	0.00	4832.52
			12/19/2017	NA	34.63	0.00	4833.67
			3/15/2018	NA	33.60	0.00	4834.70
			6/11/2018	NA	33.71	0.00	4834.59
			9/10/2018	NA	34.22	0.00	4834.08
			12/27/2018	NA	34.11	0.00	4834.19
			3/26/2019	NA	34.15	0.00	4834.15
			6/10/2019	NA	34.46	0.00	4833.84
			9/24/2019	NA	34.30	0.00	4834.00
			12/19/2019	NA	34.31	0.00	4833.99
MW-11	4872.2	44.00	3/15/2016	NA	41.07	0.00	4831.13
			3/21/2016	NA	41.10	0.00	4831.10
			3/22/2016	NA	42.22	0.00	4829.98
			3/29/2016	NA	40.98	0.00	4831.22
			4/5/2016	NA	41.06	0.00	4831.14
			4/19/2016	NA	47.15	0.00	4825.05
			4/26/2016	NA	40.83	0.00	4831.37
			5/5/2016	NA	41.06	0.00	4831.14
			6/6/2016	NA	41.00	0.00	4831.20
			6/20/2016	NA	41.08	0.00	4831.12
			8/11/2016	NA	41.83	0.00	4830.37
			9/15/2016	NA	40.81	0.00	4831.39
			12/15/2016	NA	40.59	0.00	4831.61
			3/16/2017	NA	40.39	0.00	4831.81
			6/15/2017	NA	40.17	0.00	4832.03
			9/14/2017	NA	39.63	0.00	4832.57
			12/19/2017	NA	39.14	0.00	4833.06
			3/15/2018	NA	38.63	0.00	4833.57
			6/11/2018	NA	38.59	0.00	4833.61
			9/10/2018	NA	39.07	0.00	4833.13
			12/27/2018	NA	38.48	0.00	4833.72
			3/25/2019	NA	38.73	0.00	4833.47
			6/10/2019	NA	38.90	0.00	4833.30
			9/24/2019	NA	38.68	0.00	4833.52
			12/19/2019	NA	38.57	0.00	4833.63



Table 3 - Gauging Data

Whiting Oil and Gas Corporation
Nelson C-1
Weld County, Colorado

Well ID	Top of Casing Elevation (ft amsl)	Total Depth of Well (ft)	Date Gauged	Depth to Product (ft btoc)	DTW (ft btoc)	Product Thickness (ft)	Potentiometric Surface Elevation (ft)
MW-12	4870.6	38.00	3/15/2016	NA	Dry	0.00	NA
			3/21/2016	NA	Dry	0.00	NA
			3/22/2016	NA	Dry	0.00	NA
			3/29/2016	NA	Dry	0.00	NA
			4/5/2016	NA	40.09	0.00	4830.51
			4/19/2016	NA	39.46	0.00	4831.14
			4/26/2016	NA	39.28	0.00	4831.32
			5/5/2016	NA	39.16	0.00	4831.44
			6/6/2016	NA	38.94	0.00	4831.66
			6/20/2016	NA	38.91	0.00	4831.69
			8/11/2016	NA	38.83	0.00	4831.77
			9/15/2016	NA	38.78	0.00	4831.82
			12/15/2016	NA	38.67	0.00	4831.93
			3/16/2017	NA	38.61	0.00	4831.99
			6/15/2017	NA	38.45	0.00	4832.15
			9/14/2017	NA	38.35	0.00	4832.25
			12/19/2017	NA	38.10	0.00	4832.50
			3/15/2018	NA	37.88	0.00	4832.72
			6/11/2018	NA	37.72	0.00	4832.88
			9/10/2018	NA	37.72	0.00	4832.88
			12/27/2018	NA	37.60	0.00	4833.00
			3/25/2019	NA	37.66	0.00	4832.94
			6/10/2019	NA	37.58	0.00	4833.02
			9/24/2019	NA	37.59	0.00	4833.01
			12/19/2019	NA	37.59	0.00	4833.01
MW-13	4864.9	40.00	3/15/2016	NA	Dry	0.00	NA
			3/21/2016	NA	38.86	0.00	4826.04
			3/22/2016	NA	39.35	0.00	4825.55
			3/29/2016	NA	37.37	0.00	4827.53
			4/5/2016	NA	35.84	0.00	4829.06
			4/19/2016	NA	33.26	0.00	4831.64
			4/26/2016	NA	32.39	0.00	4832.51
			5/5/2016	NA	31.71	0.00	4833.19
			6/6/2016	NA	30.83	0.00	4834.07
			6/20/2016	NA	30.76	0.00	4834.14
			8/11/2016	NA	31.00	0.00	4833.90
			9/15/2016	NA	30.77	0.00	4834.13
			12/15/2016	NA	31.06	0.00	4833.84
			3/16/2017	NA	31.15	0.00	4833.75
			6/15/2017	NA	31.30	0.00	4833.60
			9/14/2017	NA	31.46	0.00	4833.44
			12/19/2017	NA	32.63	0.00	4832.27
			3/15/2018	NA	31.35	0.00	4833.55
			6/11/2018	NA	31.57	0.00	4833.33
			9/10/2018	NA	31.62	0.00	4833.28
			12/27/2018	NA	31.71	0.00	4833.19
			3/26/2019	NA	31.54	0.00	4833.36
			6/10/2019	NA	31.32	0.00	4833.58
			9/24/2019	NA	31.41	0.00	4833.49
			12/19/2019	NA	31.40	0.00	4833.50
MW-14	4864.3	40.00	3/15/2016	NA	29.62	0.00	4834.68
			3/21/2016	NA	29.55	0.00	4834.75
			3/22/2016	NA	29.35	0.00	4834.95
			3/29/2016	NA	29.37	0.00	4834.93
			4/5/2016	NA	29.64	0.00	4834.66
			4/19/2016	NA	29.85	0.00	4834.45
			4/26/2016	NA	29.51	0.00	4834.79
			5/5/2016	NA	29.79	0.00	4834.51
			6/6/2016	NA	29.73	0.00	4834.57
			6/20/2016	NA	29.94	0.00	4834.36
			8/11/2016	NA	29.71	0.00	4834.59
			9/15/2016	NA	29.80	0.00	4834.50
			12/15/2016	NA	29.87	0.00	4834.43
			3/16/2017	NA	30.29	0.00	4834.01
			6/15/2017	NA	30.65	0.00	4833.65
			9/14/2017	NA	30.42	0.00	4833.88
			12/19/2017	NA	30.63	0.00	4833.67
			3/15/2018	NA	30.11	0.00	4834.19
			6/11/2018	NA	30.50	0.00	4833.80
			9/10/2018	NA	30.31	0.00	4833.99
			12/27/2018	NA	30.15	0.00	4834.15
			3/25/2019	NA	30.77	0.00	4833.53
			6/10/2019	NA	30.61	0.00	4833.69
			9/24/2019	NA	30.60	0.00	4833.70
			12/19/2019	NA	30.49	0.00	4833.81



Table 3 - Gauging Data

Whiting Oil and Gas Corporation
Nelson C-1
Weld County, Colorado

Well ID	Top of Casing Elevation (ft amsl)	Total Depth of Well (ft)	Date Gauged	Depth to Product (ft btoc)	DTW (ft btoc)	Product Thickness (ft)	Potentiometric Surface Elevation (ft)
MW-15	4861.9	34.00	3/15/2016	NA	35.15	0.00	4826.75
			3/21/2016	NA	33.75	0.00	4828.15
			3/22/2016	NA	34.15	0.00	4827.75
			3/29/2016	NA	31.69	0.00	4830.21
			4/5/2016	NA	30.14	0.00	4831.76
			4/19/2016	NA	28.50	0.00	4833.40
			4/26/2016	NA	27.96	0.00	4833.94
			5/5/2016	NA	27.64	0.00	4834.26
			6/6/2016	NA	27.12	0.00	4834.78
			6/20/2016	NA	27.00	0.00	4834.90
			8/11/2016	NA	27.47	0.00	4834.43
			9/15/2016	NA	27.19	0.00	4834.71
			12/15/2016	NA	27.60	0.00	4834.30
			3/16/2017	NA	28.11	0.00	4833.79
			6/15/2017	NA	28.59	0.00	4833.31
			9/14/2017	28.92	28.99	0.07	4832.97
			12/19/2017	NA	29.10	0.00	4832.80
			3/15/2018	29.01	29.05	0.04	4832.88
			6/11/2018	29.32	29.40	0.08	4832.56
			9/10/2018	29.01	29.22	0.21	4832.85
			12/27/2018	29.05	29.10	0.05	4832.84
			3/25/2019	29.52	29.69	0.17	4832.35
			6/11/2019	32.66	32.72	0.06	4829.23
			9/24/2019	33.75	33.82	0.07	4828.14
			12/19/2019	33.45	33.48	0.03	4828.44
MW-16	4863.9	39.00	3/15/2016	NA	35.52	0.00	4828.38
			3/21/2016	NA	32.67	0.00	4831.23
			3/22/2016	36.31	36.34	0.03	4827.58
			3/29/2016	NA	30.70	0.00	4833.20
			4/5/2016	NA	29.65	0.00	4834.25
			4/19/2016	NA	29.19	0.00	4834.71
			4/26/2016	NA	28.98	0.00	4834.92
			5/5/2016	NA	29.18	0.00	4834.72
			6/6/2016	NA	29.27	0.00	4834.63
			6/20/2016	NA	29.30	0.00	4834.60
			8/11/2016	NA	29.30	0.00	4834.60
			9/15/2016	NA	29.20	0.00	4834.70
			12/15/2016	NA	29.15	0.00	4834.75
			3/16/2017	NA	29.13	0.00	4834.77
			6/15/2017	NA	29.53	0.00	4834.37
			9/14/2017	NA	29.47	0.00	4834.43
			12/19/2017	NA	30.00	0.00	4833.90
			3/15/2018	NA	28.49	0.00	4835.41
			6/11/2018	NA	28.78	0.00	4835.12
			9/10/2018	NA	27.63	0.00	4836.27
			12/27/2018	NA	28.04	0.00	4835.86
			3/25/2019	NA	28.49	0.00	4835.41
			6/11/2019	NA	27.61	0.00	4836.29
			9/24/2019	NA	27.84	0.00	4836.06
			12/19/2019	NA	28.39	0.00	4835.51
MW-17	4866.5	44.00	3/16/2016	NA	Dry	0.00	NA
			3/21/2016	43.16	Dry	0.84	NA
			3/22/2016	44.45	45.53	1.08	4821.84
			3/29/2016	39.16	43.55	4.39	4826.48
			4/5/2016	36.62	42.32	5.70	4828.76
			4/19/2016	34.22	42.25	8.03	4830.71
			4/26/2016	33.39	42.16	8.77	4831.39
			5/5/2016	33.04	42.05	9.01	4831.69
			6/6/2016	32.71	41.94	9.23	4831.98
			6/20/2016	36.13	43.14	7.01	4829.00
			8/11/2016	44.20	45.25	1.05	4822.09
			9/15/2016	40.19	43.34	3.15	4825.69
			12/15/2016	40.75	43.09	2.34	4825.29
			3/16/2017	38.92	41.12	2.20	4827.15
			6/15/2017	38.00	39.74	1.74	4828.16
			9/14/2017	NA	Dry	NA	NA
			12/19/2017	33.50	35.59	2.09	4832.59
			3/15/2018	32.75	33.05	0.30	4833.69
			6/11/2018	32.81	33.33	0.52	4833.59
			9/10/2018	32.18	32.45	0.27	4834.27
			12/27/2018	32.25	32.55	0.30	4834.19
			3/25/2019	32.45	33.10	0.65	4833.92
			6/11/2019	32.46	33.18	0.72	4833.90
			9/24/2019	32.43	32.89	0.46	4833.98
			12/19/2019	32.50	33.50	1.00	4833.80



Table 3 - Gauging Data

Whiting Oil and Gas Corporation
Nelson C-1
Weld County, Colorado

Well ID	Top of Casing Elevation (ft amsl)	Total Depth of Well (ft)	Date Gauged	Depth to Product (ft btoc)	DTW (ft btoc)	Product Thickness (ft)	Potentiometric Surface Elevation (ft)
MW-18	4869.2	44.00	3/16/2016	NA	38.87	0.00	4830.33
			3/21/2016	NA	37.72	0.00	4831.48
			3/22/2016	NA	38.10	0.00	4831.10
			3/29/2016	NA	37.55	0.00	4831.65
			4/5/2016	NA	37.74	0.00	4831.46
			4/19/2016	NA	37.87	0.00	4831.33
			4/26/2016	NA	37.55	0.00	4831.65
			5/5/2016	NA	37.79	0.00	4831.41
			6/6/2016	NA	37.75	0.00	4831.45
			6/20/2016	NA	37.90	0.00	4831.30
			8/11/2016	NA	37.63	0.00	4831.57
			9/15/2016	NA	37.56	0.00	4831.64
			12/15/2016	NA	37.33	0.00	4831.87
			3/16/2017	NA	37.29	0.00	4831.91
			6/15/2017	NA	37.49	0.00	4831.71
			9/14/2017	NA	36.60	0.00	4832.60
			12/19/2017	NA	28.90	0.00	4840.30
			3/15/2018	NA	35.45	0.00	4833.75
			6/11/2018	NA	35.48	0.00	4833.72
			9/10/2018	NA	35.34	0.00	4833.86
			12/27/2018	NA	35.25	0.00	4833.95
			3/25/2019	NA	35.64	0.00	4833.56
			6/10/2019	NA	35.71	0.00	4833.49
			9/24/2019	NA	35.55	0.00	4833.65
			12/19/2019	NA	35.39	0.00	4833.81
MW-19	4870.8	39.00	3/21/2016	NA	Dry	NA	NA
			3/22/2016	NA	Dry	NA	NA
			3/29/2016	NA	Dry	NA	NA
			4/5/2016	NA	Dry	NA	NA
			4/19/2016	NA	39.87	0.00	4830.93
			4/26/2016	NA	39.56	0.00	4831.24
			5/5/2016	NA	39.44	0.00	4831.36
			6/6/2016	NA	39.20	0.00	4831.60
			6/20/2016	NA	39.18	0.00	4831.62
			8/11/2016	NA	39.10	0.00	4831.70
			9/15/2016	NA	39.05	0.00	4831.75
			12/15/2016	NA	38.92	0.00	4831.88
			3/16/2017	NA	38.81	0.00	4831.99
			6/15/2017	NA	38.68	0.00	4832.12
			9/14/2017	NA	38.50	0.00	4832.30
			12/19/2017	NA	38.25	0.00	4832.55
			3/15/2018	NA	37.78	0.00	4833.02
			6/11/2018	NA	38.62	0.00	4832.18
			9/10/2018	NA	38.15	0.00	4832.65
			12/27/2018	NA	37.45	0.00	4833.35
			3/25/2019	NA	37.47	0.00	4833.33
			6/10/2019	NA	37.51	0.00	4833.29
			9/24/2019	NA	37.49	0.00	4833.31
			12/19/2019	NA	37.44	0.00	4833.36
MW-20	4867.5	39.00	3/21/2016	33.95	38.85	4.90	4832.59
			3/22/2016	38.35	40.21	1.86	4828.79
			3/29/2016	38.34	39.15	0.81	4829.00
			4/5/2016	33.52	38.88	5.36	4832.93
			4/19/2016	33.67	38.29	4.62	4832.92
			4/26/2016	33.26	38.05	4.79	4833.30
			5/5/2016	33.60	36.30	2.70	4833.37
			6/6/2016	33.85	38.85	5.00	4832.67
			6/20/2016	33.80	38.30	4.50	4832.82
			8/11/2016	35.02	38.32	3.30	4831.83
			9/15/2016	33.89	37.57	3.68	4832.89
			12/15/2016	34.10	35.90	1.80	4833.05
			3/16/2017	34.27	35.91	1.64	4832.91
			6/15/2017	34.27	35.88	1.61	4832.91
			9/14/2017	NA	Dry	NA	NA
			12/19/2017	34.06	35.65	1.59	4833.13
			3/15/2018	33.95	34.99	1.04	4833.35
			6/11/2018	34.15	34.30	0.15	4833.32
			9/10/2018	33.95	34.88	0.93	4833.37
			12/27/2018	34.02	34.20	0.18	4833.44
			3/25/2019	33.95	34.23	0.28	4833.50
			6/11/2019	33.94	34.15	0.21	4833.52
			9/24/2019	33.91	35.91	2.00	4833.20
			12/19/2019	34.08	34.22	0.14	4833.39



Table 3 - Gauging Data

**Whiting Oil and Gas Corporation
Nelson C-1
Weld County, Colorado**

Well ID	Top of Casing Elevation (ft amsl)	Total Depth of Well (ft)	Date Gauged	Depth to Product (ft btoc)	DTW (ft btoc)	Product Thickness (ft)	Potentiometric Surface Elevation (ft)
MW-21	4863.8	40.15	6/29/2017	NA	Dry	NA	NA
			9/14/2017	30.78	32.29	1.51	4832.72
			12/19/2017	29.33	33.10	3.77	4833.73
			3/15/2018	29.68	29.80	0.12	4834.10
			6/11/2018	29.85	29.90	0.05	4833.94
			9/10/2018	NA	30.16	0.00	4833.64
			12/27/2018	NA	30.24	0.00	4833.56
			3/25/2019	NA	30.29	0.00	4833.51
			6/11/2019	NA	30.31	0.00	4833.49
			9/24/2019	NA	30.61	0.00	4833.19
			12/19/2019	NA	31.11	0.00	4832.69
MW-22	4866.7	39.68	6/29/2017	35.69	35.88	0.19	4830.97
			9/14/2017	33.97	34.09	0.12	4832.71
			12/19/2017	NA	32.17	0.00	4834.53
			3/15/2018	NA	30.65	0.00	4836.05
			6/11/2018	NA	31.54	0.00	4835.16
			9/10/2018	NA	32.20	0.00	4834.50
			12/27/2018	NA	32.42	0.00	4834.28
			3/25/2019	NA	32.84	0.00	4833.86
			6/10/2019	NA	33.12	0.00	4833.58
			9/24/2019	NA	32.95	0.00	4833.75
			12/19/2019	NA	32.55	0.00	4834.15
MW-23	4866.9	35.36	4/20/2018	NA	DRY	NA	NA
			5/1/2018	NA	34.35	0.00	4832.55
			6/11/2018	33.37	33.80	0.43	4833.45
			9/10/2018	33.50	33.98	0.48	4833.31
			12/27/2018	33.45	34.10	0.65	4833.32
			3/25/2019	33.87	34.05	0.18	4832.99
			6/11/2019	33.98	34.23	0.25	4832.87
			9/24/2019	33.99	34.31	0.32	4832.85
			12/19/2019	34.15	34.40	0.25	4832.70
			4/20/2018	NA	40.40	0.00	4830.10
MW-24	4870.5	47.32	5/1/2018	NA	37.60	0.00	4832.90
			6/11/2018	NA	36.55	0.00	4833.95
			9/10/2018	NA	36.82	0.00	4833.68
			12/27/2018	NA	36.98	0.00	4833.52
			3/25/2109	NA	37.25	0.00	4833.25
			6/11/2019	NA	37.38	0.00	4833.12
			9/24/2019	NA	37.57	0.00	4832.93
			12/19/2019	NA	37.20	0.00	4833.30
			4/20/2018	NA	DRY	NA	NA
MW-25	4862.3	31.82	5/1/2018	NA	29.97	0.00	4832.33
			5/10/2018	NA	29.34	0.00	4832.96
			6/11/2018	NA	28.84	0.00	4833.46
			9/10/2018	NA	28.95	0.00	4833.35
			12/27/2018	NA	28.89	0.00	4833.41
			3/25/2019	NA	28.85	0.00	4833.45
			6/11/2019	NA	28.82	0.00	4833.48
			9/24/2019	NA	29.10	0.00	4833.20
			12/19/2019	NA	29.03	0.00	4833.27
			4/20/2018	NA	DRY	NA	NA
MW-26	4866.8	36.85	5/1/2018	NA	DRY	NA	NA
			5/10/2018	NA	DRY	NA	NA
			6/11/2018	NA	36.05	0.00	4830.75
			9/10/2018	NA	35.79	0.00	4831.01
			12/27/2018	NA	35.82	0.00	4830.98
			3/25/2019	NA	35.88	0.00	4830.92
			6/10/2019	NA	35.82	0.00	4830.98
			9/24/2019	NA	35.95	0.00	4830.85
			12/19/2019	NA	36.02	0.00	4830.78
MW-27	4872.1	45.32	5/1/2018	42.00	42.70	0.70	4829.96
			6/11/2018	41.81	42.38	0.57	4830.18
			9/10/2018	41.70	42.77	1.07	4830.19
			12/27/2018	42.01	42.54	0.53	4829.99
			3/25/2019	42.02	42.59	0.57	4829.97
			6/11/2019	42.06	42.83	0.77	4829.89
			9/24/2019	42.10	43.20	1.10	4829.78
			12/19/2019	42.04	42.90	0.86	4829.89



Table 3 - Gauging Data

Whiting Oil and Gas Corporation
Nelson C-1
Weld County, Colorado

Well ID	Top of Casing Elevation (ft amsl)	Total Depth of Well (ft)	Date Gauged	Depth to Product (ft btoc)	DTW (ft btoc)	Product Thickness (ft)	Potentiometric Surface Elevation (ft)
MW-28	4878.2	56.20	6/11/2018	NA	40.33	0.00	4837.87
			9/10/2018	NA	40.55	0.00	4837.65
			12/27/2018	NA	40.51	0.00	4837.69
			3/25/2019	NA	40.77	0.00	4837.43
			6/10/2019	NA	40.76	0.00	4837.44
			9/24/2019	NA	40.40	0.00	4837.80
			12/19/2019	NA	40.18	0.00	4838.02
MW-29	4872.8	46.18	6/11/2018	NA	DRY	NA	NA
			9/10/2018	NA	DRY	NA	NA
			12/27/2018	NA	DRY	NA	NA
			3/25/2019	NA	44.82	0.00	4827.98
			6/10/2019	NA	45.14	0.00	4827.66
			9/24/2019	NA	45.15	0.00	4827.65
			12/19/2019	NA	45.21	0.00	4827.59
MW-30	4868.9	37.16	6/11/2018	NA	33.12	0.00	4835.78
			9/10/2018	NA	32.44	0.00	4836.46
			12/27/2018	NA	32.45	0.00	4836.45
			3/25/2019	NA	32.66	0.00	4836.24
			6/10/2019	NA	32.85	0.00	4836.05
			9/24/2019	NA	33.09	0.00	4835.81
			12/19/2019	NA	33.17	0.00	4835.73
MW-31	4858.2	31.41	6/11/2018	NA	DRY	NA	NA
			9/10/2018	NA	DRY	NA	NA
			12/27/2018	NA	DRY	NA	NA
			3/25/2019	NA	30.56	0.00	4827.64
			6/10/2019	NA	31.24	0.00	4826.96
			9/24/2019	NA	31.13	0.00	4827.07
			12/19/2019	NA	31.47	0.00	4826.73

NA - Not Applicable
NG - Not Gauged
DTW - Depth to Water
ft btoc - Feet Below Top of Casing
ft amsl - Feet Above Mean Sea Level



Table 4 - PSH Removal

Whiting Oil and Gas Corporation
Nelson C-1
Weld County, Colorado

Well ID	Cumulative PSH Recovered (gallons)
MW-1	0.16
MW-2	0.46
MW-3	57.23
MW-4	2.11
MW-5	37.45
MW-6	47.04
MW-7	54.91
MW15	0.82
MW-17	109.23
MW-20	168.67
MW-21	7.77
MW-22	0.00
MW-23	16.99
MW-24	0.03
MW-25	0.00
MW-26	0.00
MW-27	93.96
Site Total	596.84
PSH - Phase Separated Hydrocarbons	

Attachment 3
Analytical Report

Summit Scientific

4653 Table Mountain Drive, Golden, Colorado 80403

303.277.9310

January 02, 2020

Jennifer Galles

Talon/LPE

1811 East Mulberry

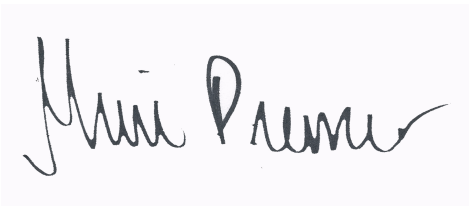
Fort Collins, CO 80525

RE: Nelson C-1 4TH Quarter

Work Order #1912379

Enclosed are the results of analyses for samples received by Summit Scientific on 12/23/19 13:20. If you have any questions concerning this report, please feel free to contact me.

Sincerely,

A handwritten signature in black ink on a light purple background. The signature is written in a cursive style and reads "Muri Premer".

Muri Premer For Paul Shrewsbury
President



Talon/LPE
1811 East Mulberry
Fort Collins CO, 80525

Project: Nelson C-1 4TH Quarter

Project Number: 701530.020.15
Project Manager: Jennifer Galles

Reported:
01/02/20 15:25

ANALYTICAL REPORT FOR SAMPLES

Sample ID	Laboratory ID	Matrix	Date Sampled	Date Received
MW-9	1912379-01	Water	12/23/19 11:05	12/23/19 13:20

Summit Scientific

The results in this report apply to the samples analyzed in accordance with the chain of custody document. This analytical report must be reproduced in its entirety.

Summit Scientific

1912379

741 Corporate Circle Suite I ♦ Golden, Colorado 80401
303-277-9310 ♦ 303-374-5933 Fax

Page 1 of 1

Client: Talon/LPE
Address: 1811 East Mulberry
City/State/Zip: Fort Collins, CO 80524
Phone: 970-818-5330 Fax:
Sampler Name: Alex Lee & Ben Bradford.

Project Manager: Jennifer Galkes
E-Mail: jgalles@talonlpe.com and jleverton@talonlpe.com
Project Name: Nelson C-1 4th quarter monitoring
Project Number: 701570.020.15

Sample Description	Date Sampled	Time Sampled	Number of Containers	Preservative				Matrix				Analyze For:								Special Instructions
				HCl	HNO ₃	None	Other (Specify)	Groundwater	Soil	Air - Canister Serial #	Other (Specify)	BTEX								
MW-9	12.23.19	11:05	3	X				X					X							
Relinquished by: <u>[Signature]</u> Date/Time: <u>12.23.19 13:20</u>				Received by: <u>[Signature]</u> Date/Time: <u>12-23-13:20</u>				Turn Around Time (Check)												
								Same Day <input type="checkbox"/> 72 Hours <input type="checkbox"/> 24 Hours <input type="checkbox"/> Standard <input checked="" type="checkbox"/> 48 Hours <input type="checkbox"/>												
Relinquished by:				Received by:				Sample Integrity:												
Relinquished by:				Received in Lab by:				Temperature Upon Receipt: <u>2.6</u>												
								Intact: Yes <input checked="" type="checkbox"/> No <input type="checkbox"/>												

1912379

Sample Receipt Checklist

S2 Work Order _____

Client: TALON Client Project ID: Nelson C-7 4th & GWMShipped Via: ☒ H.D./P.U./FedEx/UPS/USPS/Other _____ Airbill #: _____Matrix (check all that apply): ☒ Air ☐ Soil/Solid ☒ Water ☐ Other: _____
(Describe)

Temp (°C)	<u>.2</u>
-----------	-----------

Thermometer ID: 61857155-K

	Yes	No	N/A	Comments (if any)
If samples require cooling, was the temperature at 4°C +/- 2°C ⁽¹⁾ ? NOTE: If samples are delivered the same day of sampling, this requirement is met provided that there is evidence that cooling has begun.	<input checked="" type="checkbox"/>	<input type="checkbox"/>	<input type="checkbox"/>	
Were all samples received intact ⁽¹⁾ ?	<input checked="" type="checkbox"/>	<input type="checkbox"/>	<input type="checkbox"/>	
Was adequate sample volume provided ⁽¹⁾ ?	<input checked="" type="checkbox"/>	<input type="checkbox"/>	<input type="checkbox"/>	
If custody seals are present, are they intact ⁽¹⁾ ?	<input type="checkbox"/>	<input type="checkbox"/>	<input checked="" type="checkbox"/>	
Are samples with holding times due within 48 hours sample due within 48 hours present?	<input type="checkbox"/>	<input type="checkbox"/>	<input checked="" type="checkbox"/>	
Is a chain-of-custody (COC) form present and filled out completely ⁽¹⁾ ?	<input checked="" type="checkbox"/>	<input type="checkbox"/>	<input type="checkbox"/>	
Does the COC agree with the number and type of sample bottles received ⁽¹⁾ ?	<input checked="" type="checkbox"/>	<input type="checkbox"/>	<input type="checkbox"/>	
Do the sample IDs on the bottle labels match the COC ⁽¹⁾ ?	<input checked="" type="checkbox"/>	<input type="checkbox"/>	<input type="checkbox"/>	
Is the COC properly relinquished by the client w/ date and time recorded ⁽¹⁾ ?	<input checked="" type="checkbox"/>	<input type="checkbox"/>	<input type="checkbox"/>	
For volatiles in water – is there headspace present? If yes, contact client and note in narrative.	<input type="checkbox"/>	<input checked="" type="checkbox"/>	<input type="checkbox"/>	
Are samples preserved that require preservation (excluding cooling) ⁽¹⁾ ? Note the type of preservative in the Comments column – HCl, H2SO4, NaOH, HNO3, ect	<input checked="" type="checkbox"/>	<input type="checkbox"/>	<input type="checkbox"/>	HCl
If samples are acid preserved for metals, is the pH ≤ 2 ⁽¹⁾ ? Record the pH in Comments.	<input type="checkbox"/>	<input type="checkbox"/>	<input checked="" type="checkbox"/>	
If dissolved metals are requested, were samples field filtered?	<input type="checkbox"/>	<input type="checkbox"/>	<input checked="" type="checkbox"/>	

Additional Comments (if any):

⁽¹⁾ If NO, then contact the client before proceeding with analysis and note in case narrative.Muri P.
Custodian Printed Name or Initials[Signature]
Signature of Custodian12-23-19
Date/Time



Talon/LPE
1811 East Mulberry
Fort Collins CO, 80525

Project: Nelson C-1 4TH Quarter
Project Number: 701530.020.15
Project Manager: Jennifer Galles

Reported:
01/02/20 15:25

MW-9
1912379-01 (Water)

Summit Scientific

Volatile Organic Compounds by EPA Method 8260B

Date Sampled: **12/23/19 11:05**

Analyte	Result	Reporting		Units	Dilution	Batch	Prepared	Analyzed	Method	Notes
		Limit								
Benzene	ND	1.0		ug/l	1	1912421	12/31/19	01/01/20	EPA 8260B	
Toluene	ND	1.0		"	"	"	"	"	"	
Ethylbenzene	ND	1.0		"	"	"	"	"	"	
Xylenes (total)	ND	2.0		"	"	"	"	"	"	

Date Sampled: **12/23/19 11:05**

Analyte	Result	Reporting		Units	Dilution	Batch	Prepared	Analyzed	Method	Notes
		Limit								
Surrogate: 1,2-Dichloroethane-d4		92.6 %		23-173		"	"	"	"	
Surrogate: Toluene-d8		98.4 %		20-170		"	"	"	"	
Surrogate: 4-Bromofluorobenzene		98.3 %		21-167		"	"	"	"	

Summit Scientific

The results in this report apply to the samples analyzed in accordance with the chain of custody document. This analytical report must be reproduced in its entirety.



Talon/LPE
1811 East Mulberry
Fort Collins CO, 80525

Project: Nelson C-1 4TH Quarter
Project Number: 701530.020.15
Project Manager: Jennifer Galles

Reported:
01/02/20 15:25

Volatile Organic Compounds by EPA Method 8260B - Quality Control

Summit Scientific

Analyte	Reporting			Spike	Source		%REC		RPD	
	Result	Limit	Units	Level	Result	%REC	Limits	RPD	Limit	Notes

Batch 1912421 - EPA 5030 Water MS

Blank (1912421-BLK1)

Prepared: 12/31/19 Analyzed: 01/01/20

Benzene	ND	1.0	ug/l							
Toluene	ND	1.0	"							
Ethylbenzene	ND	1.0	"							
Xylenes (total)	ND	2.0	"							
Surrogate: 1,2-Dichloroethane-d4	12.2		"	13.3		91.7	23-173			
Surrogate: Toluene-d8	13.1		"	13.3		98.5	20-170			
Surrogate: 4-Bromofluorobenzene	14.0		"	13.3		105	21-167			

LCS (1912421-BS1)

Prepared: 12/31/19 Analyzed: 01/01/20

Benzene	20.8	1.0	ug/l	33.3		62.3	51-132			
Toluene	23.9	1.0	"	33.3		71.6	51-138			
Ethylbenzene	34.6	1.0	"	33.3		104	58-146			
m,p-Xylene	73.0	2.0	"	66.7		109	57-144			
o-Xylene	34.2	1.0	"	33.3		102	53-146			
Surrogate: 1,2-Dichloroethane-d4	12.0		"	13.3		89.9	23-173			
Surrogate: Toluene-d8	13.0		"	13.3		97.7	20-170			
Surrogate: 4-Bromofluorobenzene	13.4		"	13.3		100	21-167			

Matrix Spike (1912421-MS1)

Source: 1912377-01

Prepared: 12/31/19 Analyzed: 01/01/20

Benzene	20.4	1.0	ug/l	33.3	ND	61.2	34-141			
Toluene	23.6	1.0	"	33.3	ND	70.9	27-151			
Ethylbenzene	35.0	1.0	"	33.3	ND	105	29-160			
m,p-Xylene	73.6	2.0	"	66.7	ND	110	20-166			
o-Xylene	34.5	1.0	"	33.3	ND	104	33-159			
Surrogate: 1,2-Dichloroethane-d4	12.6		"	13.3		94.9	23-173			
Surrogate: Toluene-d8	12.8		"	13.3		96.4	20-170			
Surrogate: 4-Bromofluorobenzene	13.0		"	13.3		97.2	21-167			

Summit Scientific

The results in this report apply to the samples analyzed in accordance with the chain of custody document. This analytical report must be reproduced in its entirety.



Talon/LPE
1811 East Mulberry
Fort Collins CO, 80525

Project: Nelson C-1 4TH Quarter
Project Number: 701530.020.15
Project Manager: Jennifer Galles

Reported:
01/02/20 15:25

Volatile Organic Compounds by EPA Method 8260B - Quality Control
Summit Scientific

Analyte	Reporting			Spike	Source		%REC		RPD	
	Result	Limit	Units	Level	Result	%REC	Limits	RPD	Limit	Notes

Batch 1912421 - EPA 5030 Water MS

Matrix Spike Dup (1912421-MSD1)		Source: 1912377-01			Prepared: 12/31/19 Analyzed: 01/01/20					
Benzene	20.2	1.0	ug/l	33.3	ND	60.7	34-141	0.837	30	
Toluene	23.4	1.0	"	33.3	ND	70.1	27-151	1.23	30	
Ethylbenzene	33.7	1.0	"	33.3	ND	101	29-160	3.72	30	
m,p-Xylene	70.9	2.0	"	66.7	ND	106	20-166	3.68	30	
o-Xylene	33.7	1.0	"	33.3	ND	101	33-159	2.49	30	
Surrogate: 1,2-Dichloroethane-d4	13.1		"	13.3		98.4	23-173			
Surrogate: Toluene-d8	13.3		"	13.3		99.6	20-170			
Surrogate: 4-Bromofluorobenzene	13.1		"	13.3		98.0	21-167			

Summit Scientific

The results in this report apply to the samples analyzed in accordance with the chain of custody document. This analytical report must be reproduced in its entirety.



Talon/LPE
1811 East Mulberry
Fort Collins CO, 80525

Project: Nelson C-1 4TH Quarter
Project Number: 701530.020.15
Project Manager: Jennifer Galles

Reported:
01/02/20 15:25

Notes and Definitions

DET	Analyte DETECTED
ND	Analyte NOT DETECTED at or above the reporting limit
NR	Not Reported
dry	Sample results reported on a dry weight basis
RPD	Relative Percent Difference

Summit Scientific

4653 Table Mountain Drive, Golden, Colorado 80403

303.277.9310

January 02, 2020

Jennifer Galles

Talon/LPE

1811 East Mulberry

Fort Collins, CO 80525

RE: Nelson C-1 4TH Quarter

Work Order #1912324

Enclosed are the results of analyses for samples received by Summit Scientific on 12/20/19 14:30. If you have any questions concerning this report, please feel free to contact me.

Sincerely,

A handwritten signature in black ink on a light purple background. The signature is cursive and reads "Muri Premer".

Muri Premer For Paul Shrewsbury
President



Talon/LPE
1811 East Mulberry
Fort Collins CO, 80525

Project: Nelson C-1 4TH Quarter

Project Number: 701530.020.15
Project Manager: Jennifer Galles

Reported:
01/02/20 10:35

ANALYTICAL REPORT FOR SAMPLES

Sample ID	Laboratory ID	Matrix	Date Sampled	Date Received
MW-1	1912324-01	Water	12/20/19 10:30	12/20/19 14:30
MW-2	1912324-02	Water	12/20/19 10:40	12/20/19 14:30
MW-5	1912324-03	Water	12/20/19 11:35	12/20/19 14:30
MW-6	1912324-04	Water	12/20/19 11:45	12/20/19 14:30
MW-8	1912324-05	Water	12/20/19 11:40	12/20/19 14:30
MW-10	1912324-06	Water	12/20/19 11:10	12/20/19 14:30
MW-11	1912324-07	Water	12/20/19 11:25	12/20/19 14:30
MW-12	1912324-08	Water	12/20/19 11:20	12/20/19 14:30
MW-13	1912324-09	Water	12/20/19 12:00	12/20/19 14:30
MW-14	1912324-10	Water	12/20/19 10:55	12/20/19 14:30
MW-15	1912324-11	Water	12/20/19 10:50	12/20/19 14:30
MW-16	1912324-12	Water	12/20/19 11:15	12/20/19 14:30
MW-18	1912324-13	Water	12/20/19 11:30	12/20/19 14:30
MW-19	1912324-14	Water	12/20/19 11:50	12/20/19 14:30
MW-21	1912324-15	Water	12/20/19 12:00	12/20/19 14:30
MW-22	1912324-16	Water	12/20/19 12:03	12/20/19 14:30
MW-24	1912324-17	Water	12/20/19 12:10	12/20/19 14:30
MW-25	1912324-18	Water	12/20/19 12:15	12/20/19 14:30
MW-26	1912324-19	Water	12/20/19 12:20	12/20/19 14:30
MW-28	1912324-20	Water	12/20/19 12:25	12/20/19 14:30
MW-29	1912324-21	Water	12/20/19 12:30	12/20/19 14:30
MW-30	1912324-22	Water	12/20/19 12:35	12/20/19 14:30
MW-31	1912324-23	Water	12/20/19 12:40	12/20/19 14:30
DUP-A	1912324-24	Water	12/20/19 12:45	12/20/19 14:30
DUP-B	1912324-25	Water	12/20/19 12:50	12/20/19 14:30
DUP-C	1912324-26	Water	12/20/19 12:55	12/20/19 14:30

Summit Scientific

The results in this report apply to the samples analyzed in accordance with the chain of custody document. This analytical report must be reproduced in its entirety.



Talon/LPE
1811 East Mulberry
Fort Collins CO, 80525

Project: Nelson C-1 4TH Quarter
Project Number: 701530.020.15
Project Manager: Jennifer Galles

Reported:
01/02/20 10:35

Summit Scientific

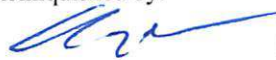
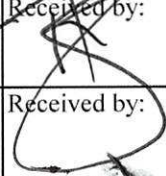
A handwritten signature in black ink, appearing to read "John Palmer", is written over a light purple rectangular background.

The results in this report apply to the samples analyzed in accordance with the chain of custody document. This analytical report must be reproduced in its entirety.

1912324.1

Page 1 of 3

Project Manager:	Jennifer Galles
E-Mail:	jgalles@talonlpe.com and jleverton@talonlpe.com
Project Name:	Nelson C-1 4th quarter
Project Number:	701530.020.15

				Preservative				Matrix				Analyze For:										Special Instructions				
Sample Description	Date Sampled	Time Sampled	Number of Containers	HCl	HNO ₃	None	Other (Specify)	Groundwater	Soil	Air - Canister Serial #	Other (Specify)	BTEX														
MW - 1	12.20.2019	10:30	3	x				x				x														
MW - 2	12.20.2019	10:40	3	x				x				x														
MW - 5	12.20.2019	11:35	3	x				x				x														
MW - 6	12.20.2019	11:45	3	x				x				x														
MW - 8	12.20.2019	11:40	3	x				x				x														
MW - 10	12.20.2019	11:10	3	x				x				x														
MW - 11	12.20.2019	11:25	3	x				x				x														
MW - 12	12.20.2019	11:20	3	x				x				x														
MW - 13	12.20.2019	12:00	3	x				x				x														
MW - 14	12.20.2019	10:55	3	x				x				x														
Relinquished by:  1430				Date/Time: 12.20.19				Received by: 				Date/Time: 12/20/19 1430				Turn Around Time (Check)										
Relinquished by:				Date/Time:				Received by:				Date/Time:				Same Day <input type="checkbox"/> 72 Hours <input type="checkbox"/> 24 Hours <input type="checkbox"/> Standard <input checked="" type="checkbox"/> 48 Hours <input type="checkbox"/>										
Relinquished by:				Date/Time:				Received in Lab by:				Date/Time:				Sample Integrity: Temperature Upon Receipt: 51 Intact: Yes <input checked="" type="checkbox"/> No <input type="checkbox"/>										

Summit Scientific


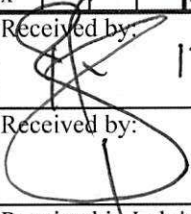
19/2324.2

741 Corporate Circle Suite I ♦ Golden, Colorado 80401
303-277-9310 ♦ 303-374-5933 Fax

Page 2 of 3

Client: Talon/LPE - Bill to Whiting
Address: 1811 East Mulberry
City/State/Zip: Fort Collins, CO 80524
Phone: 970-818-5330 Fax:
Sampler Name: Alex L., Levi K., Jason L., Ben B.

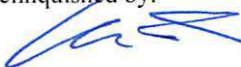
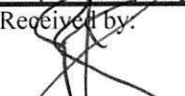
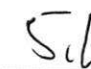
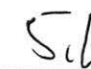
Project Manager: Jennifer Galles
E-Mail: jgalles@talonlpe.com and jleverton@talonlpe.com
Project Name: Nelson C-1 4th quarter
Project Number: 701530.020.15

Sample Description	Date Sampled	Time Sampled	Number of Containers	Preservative				Matrix				Analyze For:												Special Instructions					
				HCl	HNO ₃	None	Other (Specify)	Groundwater	Soil	Air - Canister Serial #	Other (Specify)	BTEX																	
MW - 15	12.20.2019	10:50	3	x				x					x																
MW - 16	12.20.2019	11:15	3	x				x					x																
MW - 18	12.20.2019	11:30	3	x				x					x																
MW - 19	12.20.2019	11:50	3	x				x					x																
MW - 21	12.20.2019	12:00	3	x				x					x																
MW - 22	12.20.2019	12:03	3	x				x					x																
MW - 24	12.20.2019	12:10	3	x				x					x																
MW - 25	12.20.2019	12:15	3	x				x					x																
MW - 26	12.20.2019	12:20	3	x				x					x																
MW - 28	12.20.2019	12:25	3	x				x					x																
Relinquished by:  12/20/19 1430				Date/Time: 12.20.19				Received by:  12/20/19 1430				Date/Time: 12/20/19 1430				Turn Around Time (Check)													
Relinquished by:				Date/Time:				Received by:				Date/Time:				Same Day <input type="checkbox"/> 72 Hours <input type="checkbox"/>													
Relinquished by:				Date/Time:				Received by:				Date/Time:				24 Hours <input type="checkbox"/> Standard <input checked="" type="checkbox"/>													
Relinquished by:				Date/Time:				Received in Lab by:				Date/Time:				Sample Integrity: Temperature Upon Receipt: 5.1													
																Intact: Yes <input checked="" type="checkbox"/> No <input type="checkbox"/>													

1912324.3

Page 3 of 3

Project Manager:	Jennifer Galles
E-Mail:	jgalles@talonlpe.com and jleverton@talonlpe.com
Project Name:	Nelson C-1 4th quarter
Project Number:	701530.020.15

				Preservative				Matrix				Analyze For:												Special Instructions				
Sample Description	Date Sampled	Time Sampled	Number of Containers	HCl	HNO ₃	None	Other (Specify)	Groundwater	Soil	Air - Canister Serial #	Other (Specify)	BTEX																
MW - 29	12.20.2019	12:30	3	x				x				x																
MW - 30	12.20.2019	12:35	3	x				x				x																
MW - 31	12.20.2019	12:40	3	x				x				x																
DUP - A	12.20.2019	12:45	3	x				x				x																
DUP - B	12.20.2019	12:50	3	x				x				x																
DUP - C	12.20.2019	12:55	3	x				x				x																
Relinquished by:  1430 12.20.19				Date/Time: 12/20/19 1430				Received by: 				Date/Time: 12/20/19 1430				Turn Around Time (Check)												
Relinquished by:				Date/Time:				Received by:				Date/Time:				Same Day <input type="checkbox"/> 72 Hours <input type="checkbox"/> 24 Hours <input type="checkbox"/> Standard <input checked="" type="checkbox"/> 48 Hours <input type="checkbox"/>												
Relinquished by:				Date/Time:				Received in Lab by:				Date/Time:				Sample Integrity:  Temperature Upon Receipt:  Intact: Yes <input checked="" type="checkbox"/> No <input type="checkbox"/>												

Sample Receipt Checklist

S2 Work Order

1912324

Client:

Tiplon/LE

Client Project ID:

Nelson C-1 4th quar.

Shipped Via: H.D./P.U./FedEx/UPS/USPS/Other

Airbill #:

Matrix (check all that apply):

Air

Soil/Solid

Water

Other:

(Describe)

Temp (°C)

5.1

Thermometer ID: 61857155-K

	Yes	No	N/A	Comments (if any)
If samples require cooling, was the temperature at 4°C +/- 2°C ⁽¹⁾ ?	<input checked="" type="checkbox"/>	<input type="checkbox"/>	<input type="checkbox"/>	
NOTE: If samples are delivered the same day of sampling, this requirement is met provided that there is evidence that cooling has begun.				
Were all samples received intact ⁽¹⁾ ?	<input checked="" type="checkbox"/>	<input type="checkbox"/>	<input type="checkbox"/>	
Was adequate sample volume provided ⁽¹⁾ ?	<input checked="" type="checkbox"/>	<input type="checkbox"/>	<input type="checkbox"/>	
If custody seals are present, are they intact ⁽¹⁾ ?	<input type="checkbox"/>	<input type="checkbox"/>	<input checked="" type="checkbox"/>	
Are samples with holding times due within 48 hours sample due within 48 hours present?	<input type="checkbox"/>	<input checked="" type="checkbox"/>	<input type="checkbox"/>	
Is a chain-of-custody (COC) form present and filled out completely ⁽¹⁾ ?	<input checked="" type="checkbox"/>	<input type="checkbox"/>	<input type="checkbox"/>	
Does the COC agree with the number and type of sample bottles received ⁽¹⁾ ?	<input checked="" type="checkbox"/>	<input type="checkbox"/>	<input type="checkbox"/>	
Do the sample IDs on the bottle labels match the COC ⁽¹⁾ ?	<input checked="" type="checkbox"/>	<input type="checkbox"/>	<input type="checkbox"/>	
Is the COC properly relinquished by the client w/ date and time recorded ⁽¹⁾ ?	<input checked="" type="checkbox"/>	<input type="checkbox"/>	<input type="checkbox"/>	
For volatiles in water – is there headspace present? If yes, contact client and note in narrative.	<input type="checkbox"/>	<input checked="" type="checkbox"/>	<input type="checkbox"/>	
Are samples preserved that require preservation (excluding cooling) ⁽¹⁾ ?	<input checked="" type="checkbox"/>	<input type="checkbox"/>	<input type="checkbox"/>	HCC
Note the type of preservative in the Comments column – HCl, H ₂ SO ₄ , NaOH, HNO ₃ , ect				
If samples are acid preserved for metals, is the pH ≤ 2 ⁽¹⁾ ?	<input type="checkbox"/>	<input type="checkbox"/>	<input checked="" type="checkbox"/>	
Record the pH in Comments.				
If dissolved metals are requested, were samples field filtered?	<input type="checkbox"/>	<input type="checkbox"/>	<input checked="" type="checkbox"/>	
Additional Comments (if any):				
⁽¹⁾ If NO, then contact the client before proceeding with analysis and note in case narrative.				

Custodian Printed Name or Initials

Signature of Custodian

Date/Time

12/20/19 1800



Talon/LPE
1811 East Mulberry
Fort Collins CO, 80525

Project: Nelson C-1 4TH Quarter
Project Number: 701530.020.15
Project Manager: Jennifer Galles

Reported:
01/02/20 10:35

MW-1
1912324-01 (Water)

Summit Scientific

Volatile Organic Compounds by EPA Method 8260B

Date Sampled: **12/20/19 10:30**

Analyte	Result	Reporting		Dilution	Batch	Prepared	Analyzed	Method	Notes
		Limit	Units						
Benzene	8700	100	ug/l	100	1912388	12/30/19	01/01/20	EPA 8260B	
Toluene	6200	100	"	"	"	"	"	"	
Ethylbenzene	780	100	"	"	"	"	"	"	
Xylenes (total)	5400	200	"	"	"	"	"	"	

Date Sampled: **12/20/19 10:30**

Analyte	Result	Reporting		Dilution	Batch	Prepared	Analyzed	Method	Notes
		Limit	Units						
Surrogate: 1,2-Dichloroethane-d4		106 %	23-173		"	"	"	"	
Surrogate: Toluene-d8		98.1 %	20-170		"	"	"	"	
Surrogate: 4-Bromofluorobenzene		102 %	21-167		"	"	"	"	

Summit Scientific

The results in this report apply to the samples analyzed in accordance with the chain of custody document. This analytical report must be reproduced in its entirety.



Talon/LPE
1811 East Mulberry
Fort Collins CO, 80525

Project: Nelson C-1 4TH Quarter
Project Number: 701530.020.15
Project Manager: Jennifer Galles

Reported:
01/02/20 10:35

MW-2
1912324-02 (Water)

Summit Scientific

Volatile Organic Compounds by EPA Method 8260B

Date Sampled: **12/20/19 10:40**

Analyte	Result	Reporting		Units	Dilution	Batch	Prepared	Analyzed	Method	Notes
		Limit								
Benzene	7000	100		ug/l	100	1912388	12/30/19	01/01/20	EPA 8260B	
Toluene	3300	100		"	"	"	"	"	"	
Ethylbenzene	610	100		"	"	"	"	"	"	
Xylenes (total)	4900	200		"	"	"	"	"	"	

Date Sampled: **12/20/19 10:40**

Analyte	Result	Reporting		Units	Dilution	Batch	Prepared	Analyzed	Method	Notes
		Limit								
Surrogate: 1,2-Dichloroethane-d4		110 %		23-173		"	"	"	"	
Surrogate: Toluene-d8		99.6 %		20-170		"	"	"	"	
Surrogate: 4-Bromofluorobenzene		100 %		21-167		"	"	"	"	

Summit Scientific

The results in this report apply to the samples analyzed in accordance with the chain of custody document. This analytical report must be reproduced in its entirety.



Talon/LPE
1811 East Mulberry
Fort Collins CO, 80525

Project: Nelson C-1 4TH Quarter
Project Number: 701530.020.15
Project Manager: Jennifer Galles

Reported:
01/02/20 10:35

MW-5
1912324-03 (Water)

Summit Scientific

Volatile Organic Compounds by EPA Method 8260B

Date Sampled: **12/20/19 11:35**

Analyte	Result	Reporting		Units	Dilution	Batch	Prepared	Analyzed	Method	Notes
		Limit								
Benzene	6100	100		ug/l	100	1912388	12/30/19	01/01/20	EPA 8260B	
Toluene	6600	100		"	"	"	"	"	"	
Ethylbenzene	810	100		"	"	"	"	"	"	
Xylenes (total)	5000	200		"	"	"	"	"	"	

Date Sampled: **12/20/19 11:35**

Analyte	Result	Reporting		Units	Dilution	Batch	Prepared	Analyzed	Method	Notes
		Limit								
Surrogate: 1,2-Dichloroethane-d4		111 %		23-173		"	"	"	"	
Surrogate: Toluene-d8		99.9 %		20-170		"	"	"	"	
Surrogate: 4-Bromofluorobenzene		99.3 %		21-167		"	"	"	"	

Summit Scientific

The results in this report apply to the samples analyzed in accordance with the chain of custody document. This analytical report must be reproduced in its entirety.



Talon/LPE
1811 East Mulberry
Fort Collins CO, 80525

Project: Nelson C-1 4TH Quarter
Project Number: 701530.020.15
Project Manager: Jennifer Galles

Reported:
01/02/20 10:35

MW-6
1912324-04 (Water)

Summit Scientific

Volatile Organic Compounds by EPA Method 8260B

Date Sampled: **12/20/19 11:45**

Analyte	Result	Reporting		Units	Dilution	Batch	Prepared	Analyzed	Method	Notes
		Limit								
Benzene	6800	100		ug/l	100	1912388	12/30/19	01/01/20	EPA 8260B	
Toluene	5500	100		"	"	"	"	"	"	
Ethylbenzene	570	100		"	"	"	"	"	"	
Xylenes (total)	3900	200		"	"	"	"	"	"	

Date Sampled: **12/20/19 11:45**

Analyte	Result	Reporting		Units	Dilution	Batch	Prepared	Analyzed	Method	Notes
		Limit								
Surrogate: 1,2-Dichloroethane-d4		109 %		23-173		"	"	"	"	
Surrogate: Toluene-d8		97.5 %		20-170		"	"	"	"	
Surrogate: 4-Bromofluorobenzene		99.5 %		21-167		"	"	"	"	

Summit Scientific

The results in this report apply to the samples analyzed in accordance with the chain of custody document. This analytical report must be reproduced in its entirety.



Talon/LPE
1811 East Mulberry
Fort Collins CO, 80525

Project: Nelson C-1 4TH Quarter
Project Number: 701530.020.15
Project Manager: Jennifer Galles

Reported:
01/02/20 10:35

MW-8
1912324-05 (Water)

Summit Scientific

Volatile Organic Compounds by EPA Method 8260B

Date Sampled: **12/20/19 11:40**

Analyte	Result	Reporting		Units	Dilution	Batch	Prepared	Analyzed	Method	Notes
		Limit								
Benzene	9200	100		ug/l	100	1912388	12/30/19	01/01/20	EPA 8260B	
Toluene	9400	100		"	"	"	"	"	"	
Ethylbenzene	800	100		"	"	"	"	"	"	
Xylenes (total)	6600	200		"	"	"	"	"	"	

Date Sampled: **12/20/19 11:40**

Analyte	Result	Reporting		Units	Dilution	Batch	Prepared	Analyzed	Method	Notes
		Limit								
Surrogate: 1,2-Dichloroethane-d4		112 %		23-173		"	"	"	"	
Surrogate: Toluene-d8		99.5 %		20-170		"	"	"	"	
Surrogate: 4-Bromofluorobenzene		101 %		21-167		"	"	"	"	

Summit Scientific

The results in this report apply to the samples analyzed in accordance with the chain of custody document. This analytical report must be reproduced in its entirety.



Talon/LPE
1811 East Mulberry
Fort Collins CO, 80525

Project: Nelson C-1 4TH Quarter
Project Number: 701530.020.15
Project Manager: Jennifer Galles

Reported:
01/02/20 10:35

MW-10
1912324-06 (Water)

Summit Scientific

Volatile Organic Compounds by EPA Method 8260B

Date Sampled: **12/20/19 11:10**

Analyte	Result	Reporting		Units	Dilution	Batch	Prepared	Analyzed	Method	Notes
		Limit								
Benzene	ND	1.0		ug/l	1	1912388	12/30/19	01/01/20	EPA 8260B	
Toluene	2.1	1.0		"	"	"	"	"	"	
Ethylbenzene	ND	1.0		"	"	"	"	"	"	
Xylenes (total)	2.6	2.0		"	"	"	"	"	"	

Date Sampled: **12/20/19 11:10**

Analyte	Result	Reporting		Units	Dilution	Batch	Prepared	Analyzed	Method	Notes
		Limit								
Surrogate: 1,2-Dichloroethane-d4		120 %		23-173		"	"	"	"	
Surrogate: Toluene-d8		95.7 %		20-170		"	"	"	"	
Surrogate: 4-Bromofluorobenzene		100 %		21-167		"	"	"	"	

Summit Scientific

The results in this report apply to the samples analyzed in accordance with the chain of custody document. This analytical report must be reproduced in its entirety.



Talon/LPE
1811 East Mulberry
Fort Collins CO, 80525

Project: Nelson C-1 4TH Quarter
Project Number: 701530.020.15
Project Manager: Jennifer Galles

Reported:
01/02/20 10:35

MW-11
1912324-07 (Water)

Summit Scientific

Volatile Organic Compounds by EPA Method 8260B

Date Sampled: **12/20/19 11:25**

Analyte	Result	Reporting	Units	Dilution	Batch	Prepared	Analyzed	Method	Notes
		Limit							
Benzene	ND	1.0	ug/l	1	1912388	12/30/19	12/31/19	EPA 8260B	
Toluene	ND	1.0	"	"	"	"	"	"	
Ethylbenzene	ND	1.0	"	"	"	"	"	"	
Xylenes (total)	ND	2.0	"	"	"	"	"	"	

Date Sampled: **12/20/19 11:25**

Analyte	Result	Reporting	Units	Dilution	Batch	Prepared	Analyzed	Method	Notes
		Limit							
Surrogate: 1,2-Dichloroethane-d4		120 %	23-173		"	"	"	"	
Surrogate: Toluene-d8		98.6 %	20-170		"	"	"	"	
Surrogate: 4-Bromofluorobenzene		102 %	21-167		"	"	"	"	

Summit Scientific

The results in this report apply to the samples analyzed in accordance with the chain of custody document. This analytical report must be reproduced in its entirety.



Talon/LPE
1811 East Mulberry
Fort Collins CO, 80525

Project: Nelson C-1 4TH Quarter
Project Number: 701530.020.15
Project Manager: Jennifer Galles

Reported:
01/02/20 10:35

MW-12
1912324-08 (Water)

Summit Scientific

Volatile Organic Compounds by EPA Method 8260B

Date Sampled: **12/20/19 11:20**

Analyte	Result	Reporting	Units	Dilution	Batch	Prepared	Analyzed	Method	Notes
		Limit							
Benzene	ND	1.0	ug/l	1	1912388	12/30/19	12/31/19	EPA 8260B	
Toluene	ND	1.0	"	"	"	"	"	"	
Ethylbenzene	ND	1.0	"	"	"	"	"	"	
Xylenes (total)	ND	2.0	"	"	"	"	"	"	

Date Sampled: **12/20/19 11:20**

Analyte	Result	Reporting	Units	Dilution	Batch	Prepared	Analyzed	Method	Notes
		Limit							
Surrogate: 1,2-Dichloroethane-d4		122 %	23-173		"	"	"	"	
Surrogate: Toluene-d8		98.1 %	20-170		"	"	"	"	
Surrogate: 4-Bromofluorobenzene		106 %	21-167		"	"	"	"	

Summit Scientific

The results in this report apply to the samples analyzed in accordance with the chain of custody document. This analytical report must be reproduced in its entirety.



Talon/LPE
1811 East Mulberry
Fort Collins CO, 80525

Project: Nelson C-1 4TH Quarter
Project Number: 701530.020.15
Project Manager: Jennifer Galles

Reported:
01/02/20 10:35

MW-13
1912324-09 (Water)

Summit Scientific

Volatile Organic Compounds by EPA Method 8260B

Date Sampled: **12/20/19 12:00**

Analyte	Result	Reporting	Units	Dilution	Batch	Prepared	Analyzed	Method	Notes
		Limit							
Benzene	2.0	1.0	ug/l	1	1912388	12/30/19	12/31/19	EPA 8260B	
Toluene	ND	1.0	"	"	"	"	"	"	
Ethylbenzene	ND	1.0	"	"	"	"	"	"	
Xylenes (total)	ND	2.0	"	"	"	"	"	"	

Date Sampled: **12/20/19 12:00**

Analyte	Result	Reporting	Units	Dilution	Batch	Prepared	Analyzed	Method	Notes
		Limit							
Surrogate: 1,2-Dichloroethane-d4		119 %	23-173		"	"	"	"	
Surrogate: Toluene-d8		97.4 %	20-170		"	"	"	"	
Surrogate: 4-Bromofluorobenzene		103 %	21-167		"	"	"	"	

Summit Scientific

The results in this report apply to the samples analyzed in accordance with the chain of custody document. This analytical report must be reproduced in its entirety.



Talon/LPE
1811 East Mulberry
Fort Collins CO, 80525

Project: Nelson C-1 4TH Quarter
Project Number: 701530.020.15
Project Manager: Jennifer Galles

Reported:
01/02/20 10:35

MW-14
1912324-10 (Water)

Summit Scientific

Volatile Organic Compounds by EPA Method 8260B

Date Sampled: **12/20/19 10:55**

Analyte	Result	Reporting		Units	Dilution	Batch	Prepared	Analyzed	Method	Notes
		Limit								
Benzene	510	10		ug/l	10	1912388	12/30/19	12/31/19	EPA 8260B	
Toluene	150	1.0		"	1	"	"	"	"	
Ethylbenzene	140	1.0		"	"	"	"	"	"	
Xylenes (total)	320	2.0		"	"	"	"	"	"	

Date Sampled: **12/20/19 10:55**

Analyte	Result	Reporting		Units	Dilution	Batch	Prepared	Analyzed	Method	Notes
		Limit								
Surrogate: 1,2-Dichloroethane-d4		97.1 %		23-173		"	"	"	"	
Surrogate: Toluene-d8		98.9 %		20-170		"	"	"	"	
Surrogate: 4-Bromofluorobenzene		100 %		21-167		"	"	"	"	

Summit Scientific

The results in this report apply to the samples analyzed in accordance with the chain of custody document. This analytical report must be reproduced in its entirety.



Talon/LPE
1811 East Mulberry
Fort Collins CO, 80525

Project: Nelson C-1 4TH Quarter
Project Number: 701530.020.15
Project Manager: Jennifer Galles

Reported:
01/02/20 10:35

MW-15
1912324-11 (Water)

Summit Scientific

Volatile Organic Compounds by EPA Method 8260B

Date Sampled: **12/20/19 10:50**

Analyte	Result	Reporting		Units	Dilution	Batch	Prepared	Analyzed	Method	Notes
		Limit								
Benzene	640	100		ug/l	100	1912388	12/30/19	01/01/20	EPA 8260B	
Toluene	670	100		"	"	"	"	"	"	
Ethylbenzene	100	1.0		"	1	"	"	"	"	
Xylenes (total)	4100	200		"	100	"	"	"	"	

Date Sampled: **12/20/19 10:50**

Analyte	Result	Reporting		Units	Dilution	Batch	Prepared	Analyzed	Method	Notes
		Limit								
Surrogate: 1,2-Dichloroethane-d4		114 %		23-173		"	"	"	"	
Surrogate: Toluene-d8		97.7 %		20-170		"	"	"	"	
Surrogate: 4-Bromofluorobenzene		104 %		21-167		"	"	"	"	

Summit Scientific

The results in this report apply to the samples analyzed in accordance with the chain of custody document. This analytical report must be reproduced in its entirety.



Talon/LPE
1811 East Mulberry
Fort Collins CO, 80525

Project: Nelson C-1 4TH Quarter
Project Number: 701530.020.15
Project Manager: Jennifer Galles

Reported:
01/02/20 10:35

MW-16
1912324-12 (Water)

Summit Scientific

Volatile Organic Compounds by EPA Method 8260B

Date Sampled: **12/20/19 11:15**

Analyte	Result	Reporting		Units	Dilution	Batch	Prepared	Analyzed	Method	Notes
		Limit								
Benzene	6800	100		ug/l	100	1912388	12/30/19	01/01/20	EPA 8260B	
Toluene	6500	100		"	"	"	"	"	"	
Ethylbenzene	540	100		"	"	"	"	"	"	
Xylenes (total)	3900	200		"	"	"	"	"	"	

Date Sampled: **12/20/19 11:15**

Analyte	Result	Reporting		Units	Dilution	Batch	Prepared	Analyzed	Method	Notes
		Limit								
Surrogate: 1,2-Dichloroethane-d4		110 %		23-173		"	"	"	"	
Surrogate: Toluene-d8		97.7 %		20-170		"	"	"	"	
Surrogate: 4-Bromofluorobenzene		102 %		21-167		"	"	"	"	

Summit Scientific

The results in this report apply to the samples analyzed in accordance with the chain of custody document. This analytical report must be reproduced in its entirety.



Talon/LPE
1811 East Mulberry
Fort Collins CO, 80525

Project: Nelson C-1 4TH Quarter
Project Number: 701530.020.15
Project Manager: Jennifer Galles

Reported:
01/02/20 10:35

MW-18
1912324-13 (Water)

Summit Scientific

Volatile Organic Compounds by EPA Method 8260B

Date Sampled: **12/20/19 11:30**

Analyte	Result	Reporting		Units	Dilution	Batch	Prepared	Analyzed	Method	Notes
		Limit								
Benzene	10	1.0		ug/l	1	1912388	12/30/19	12/31/19	EPA 8260B	
Toluene	ND	1.0		"	"	"	"	"	"	
Ethylbenzene	ND	1.0		"	"	"	"	"	"	
Xylenes (total)	ND	2.0		"	"	"	"	"	"	

Date Sampled: **12/20/19 11:30**

Analyte	Result	Reporting		Units	Dilution	Batch	Prepared	Analyzed	Method	Notes
		Limit								
Surrogate: 1,2-Dichloroethane-d4		118 %		23-173		"	"	"	"	
Surrogate: Toluene-d8		96.8 %		20-170		"	"	"	"	
Surrogate: 4-Bromofluorobenzene		99.2 %		21-167		"	"	"	"	

Summit Scientific

The results in this report apply to the samples analyzed in accordance with the chain of custody document. This analytical report must be reproduced in its entirety.



Talon/LPE
1811 East Mulberry
Fort Collins CO, 80525

Project: Nelson C-1 4TH Quarter
Project Number: 701530.020.15
Project Manager: Jennifer Galles

Reported:
01/02/20 10:35

MW-19
1912324-14 (Water)

Summit Scientific

Volatile Organic Compounds by EPA Method 8260B

Date Sampled: **12/20/19 11:50**

Analyte	Result	Reporting	Units	Dilution	Batch	Prepared	Analyzed	Method	Notes
		Limit							
Benzene	ND	1.0	ug/l	1	1912388	12/30/19	12/31/19	EPA 8260B	
Toluene	ND	1.0	"	"	"	"	"	"	
Ethylbenzene	ND	1.0	"	"	"	"	"	"	
Xylenes (total)	ND	2.0	"	"	"	"	"	"	

Date Sampled: **12/20/19 11:50**

Analyte	Result	Reporting	Units	Dilution	Batch	Prepared	Analyzed	Method	Notes
		Limit							
Surrogate: 1,2-Dichloroethane-d4		124 %	23-173		"	"	"	"	
Surrogate: Toluene-d8		98.0 %	20-170		"	"	"	"	
Surrogate: 4-Bromofluorobenzene		104 %	21-167		"	"	"	"	

Summit Scientific

The results in this report apply to the samples analyzed in accordance with the chain of custody document. This analytical report must be reproduced in its entirety.



Talon/LPE
1811 East Mulberry
Fort Collins CO, 80525

Project: Nelson C-1 4TH Quarter
Project Number: 701530.020.15
Project Manager: Jennifer Galles

Reported:
01/02/20 10:35

MW-21
1912324-15 (Water)

Summit Scientific

Volatile Organic Compounds by EPA Method 8260B

Date Sampled: **12/20/19 12:00**

Analyte	Result	Reporting		Units	Dilution	Batch	Prepared	Analyzed	Method	Notes
		Limit								
Benzene	1900	100		ug/l	100	1912388	12/30/19	01/01/20	EPA 8260B	
Toluene	1100	100		"	"	"	"	"	"	
Ethylbenzene	620	100		"	"	"	"	"	"	
Xylenes (total)	2400	200		"	"	"	"	"	"	

Date Sampled: **12/20/19 12:00**

Analyte	Result	Reporting		Units	Dilution	Batch	Prepared	Analyzed	Method	Notes
		Limit								
Surrogate: 1,2-Dichloroethane-d4		115 %		23-173		"	"	"	"	
Surrogate: Toluene-d8		99.8 %		20-170		"	"	"	"	
Surrogate: 4-Bromofluorobenzene		101 %		21-167		"	"	"	"	

Summit Scientific

The results in this report apply to the samples analyzed in accordance with the chain of custody document. This analytical report must be reproduced in its entirety.



Talon/LPE
1811 East Mulberry
Fort Collins CO, 80525

Project: Nelson C-1 4TH Quarter
Project Number: 701530.020.15
Project Manager: Jennifer Galles

Reported:
01/02/20 10:35

MW-22
1912324-16 (Water)

Summit Scientific

Volatile Organic Compounds by EPA Method 8260B

Date Sampled: **12/20/19 12:03**

Analyte	Result	Reporting		Units	Dilution	Batch	Prepared	Analyzed	Method	Notes
		Limit								
Benzene	1200	100		ug/l	100	1912388	12/30/19	01/01/20	EPA 8260B	
Toluene	1600	100		"	"	"	"	"	"	
Ethylbenzene	490	100		"	"	"	"	"	"	
Xylenes (total)	2500	200		"	"	"	"	"	"	

Date Sampled: **12/20/19 12:03**

Analyte	Result	Reporting		Units	Dilution	Batch	Prepared	Analyzed	Method	Notes
		Limit								
Surrogate: 1,2-Dichloroethane-d4		115 %		23-173		"	"	"	"	
Surrogate: Toluene-d8		97.9 %		20-170		"	"	"	"	
Surrogate: 4-Bromofluorobenzene		103 %		21-167		"	"	"	"	

Summit Scientific

The results in this report apply to the samples analyzed in accordance with the chain of custody document. This analytical report must be reproduced in its entirety.



Talon/LPE
1811 East Mulberry
Fort Collins CO, 80525

Project: Nelson C-1 4TH Quarter
Project Number: 701530.020.15
Project Manager: Jennifer Galles

Reported:
01/02/20 10:35

MW-24
1912324-17 (Water)

Summit Scientific

Volatile Organic Compounds by EPA Method 8260B

Date Sampled: **12/20/19 12:10**

Analyte	Result	Reporting		Units	Dilution	Batch	Prepared	Analyzed	Method	Notes
		Limit								
Benzene	4700	100		ug/l	100	1912388	12/30/19	01/01/20	EPA 8260B	
Toluene	10000	100		"	"	"	"	"	"	
Ethylbenzene	680	100		"	"	"	"	"	"	
Xylenes (total)	4900	200		"	"	"	"	"	"	

Date Sampled: **12/20/19 12:10**

Analyte	Result	Reporting		Units	Dilution	Batch	Prepared	Analyzed	Method	Notes
		Limit								
Surrogate: 1,2-Dichloroethane-d4		111 %		23-173		"	"	"	"	
Surrogate: Toluene-d8		99.5 %		20-170		"	"	"	"	
Surrogate: 4-Bromofluorobenzene		101 %		21-167		"	"	"	"	

Summit Scientific

The results in this report apply to the samples analyzed in accordance with the chain of custody document. This analytical report must be reproduced in its entirety.



Talon/LPE
1811 East Mulberry
Fort Collins CO, 80525

Project: Nelson C-1 4TH Quarter
Project Number: 701530.020.15
Project Manager: Jennifer Galles

Reported:
01/02/20 10:35

MW-25
1912324-18 (Water)

Summit Scientific

Volatile Organic Compounds by EPA Method 8260B

Date Sampled: **12/20/19 12:15**

Analyte	Result	Reporting		Units	Dilution	Batch	Prepared	Analyzed	Method	Notes
		Limit								
Benzene	990	100		ug/l	100	1912388	12/30/19	01/01/20	EPA 8260B	
Toluene	350	100		"	"	"	"	"	"	
Ethylbenzene	130	100		"	"	"	"	"	"	
Xylenes (total)	1300	200		"	"	"	"	"	"	

Date Sampled: **12/20/19 12:15**

Analyte	Result	Reporting		Units	Dilution	Batch	Prepared	Analyzed	Method	Notes
		Limit								
Surrogate: 1,2-Dichloroethane-d4		116 %		23-173		"	"	"	"	
Surrogate: Toluene-d8		99.2 %		20-170		"	"	"	"	
Surrogate: 4-Bromofluorobenzene		101 %		21-167		"	"	"	"	

Summit Scientific

The results in this report apply to the samples analyzed in accordance with the chain of custody document. This analytical report must be reproduced in its entirety.



Talon/LPE
1811 East Mulberry
Fort Collins CO, 80525

Project: Nelson C-1 4TH Quarter
Project Number: 701530.020.15
Project Manager: Jennifer Galles

Reported:
01/02/20 10:35

MW-26
1912324-19 (Water)

Summit Scientific

Volatile Organic Compounds by EPA Method 8260B

Date Sampled: **12/20/19 12:20**

Analyte	Result	Reporting		Units	Dilution	Batch	Prepared	Analyzed	Method	Notes
		Limit								
Benzene	3.1	1.0		ug/l	1	1912388	12/30/19	12/31/19	EPA 8260B	
Toluene	7.3	1.0		"	"	"	"	"	"	
Ethylbenzene	1.3	1.0		"	"	"	"	"	"	
Xylenes (total)	10	2.0		"	"	"	"	"	"	

Date Sampled: **12/20/19 12:20**

Analyte	Result	Reporting		Units	Dilution	Batch	Prepared	Analyzed	Method	Notes
		Limit								
Surrogate: 1,2-Dichloroethane-d4		127 %		23-173		"	"	"	"	
Surrogate: Toluene-d8		102 %		20-170		"	"	"	"	
Surrogate: 4-Bromofluorobenzene		99.5 %		21-167		"	"	"	"	

Summit Scientific

The results in this report apply to the samples analyzed in accordance with the chain of custody document. This analytical report must be reproduced in its entirety.



Talon/LPE
1811 East Mulberry
Fort Collins CO, 80525

Project: Nelson C-1 4TH Quarter
Project Number: 701530.020.15
Project Manager: Jennifer Galles

Reported:
01/02/20 10:35

MW-28
1912324-20 (Water)

Summit Scientific

Volatile Organic Compounds by EPA Method 8260B

Date Sampled: **12/20/19 12:25**

Analyte	Result	Reporting	Units	Dilution	Batch	Prepared	Analyzed	Method	Notes
		Limit							
Benzene	ND	1.0	ug/l	1	1912388	12/30/19	12/31/19	EPA 8260B	
Toluene	ND	1.0	"	"	"	"	"	"	
Ethylbenzene	ND	1.0	"	"	"	"	"	"	
Xylenes (total)	ND	2.0	"	"	"	"	"	"	

Date Sampled: **12/20/19 12:25**

Analyte	Result	Reporting	Units	Dilution	Batch	Prepared	Analyzed	Method	Notes
		Limit							
Surrogate: 1,2-Dichloroethane-d4		124 %	23-173		"	"	"	"	
Surrogate: Toluene-d8		98.3 %	20-170		"	"	"	"	
Surrogate: 4-Bromofluorobenzene		103 %	21-167		"	"	"	"	

Summit Scientific

The results in this report apply to the samples analyzed in accordance with the chain of custody document. This analytical report must be reproduced in its entirety.



Talon/LPE
1811 East Mulberry
Fort Collins CO, 80525

Project: Nelson C-1 4TH Quarter
Project Number: 701530.020.15
Project Manager: Jennifer Galles

Reported:
01/02/20 10:35

MW-29
1912324-21 (Water)

Summit Scientific

Volatile Organic Compounds by EPA Method 8260B

Date Sampled: **12/20/19 12:30**

Analyte	Result	Reporting	Units	Dilution	Batch	Prepared	Analyzed	Method	Notes
		Limit							
Benzene	ND	1.0	ug/l	1	1912396	12/30/19	12/31/19	EPA 8260B	
Toluene	ND	1.0	"	"	"	"	"	"	
Ethylbenzene	ND	1.0	"	"	"	"	"	"	
Xylenes (total)	ND	2.0	"	"	"	"	"	"	

Date Sampled: **12/20/19 12:30**

Analyte	Result	Reporting	Units	Dilution	Batch	Prepared	Analyzed	Method	Notes
		Limit							
Surrogate: 1,2-Dichloroethane-d4		99.4 %	23-173		"	"	"	"	
Surrogate: Toluene-d8		102 %	20-170		"	"	"	"	
Surrogate: 4-Bromofluorobenzene		111 %	21-167		"	"	"	"	

Summit Scientific

The results in this report apply to the samples analyzed in accordance with the chain of custody document. This analytical report must be reproduced in its entirety.



Talon/LPE
1811 East Mulberry
Fort Collins CO, 80525

Project: Nelson C-1 4TH Quarter
Project Number: 701530.020.15
Project Manager: Jennifer Galles

Reported:
01/02/20 10:35

MW-30
1912324-22 (Water)

Summit Scientific

Volatile Organic Compounds by EPA Method 8260B

Date Sampled: **12/20/19 12:35**

Analyte	Result	Reporting	Units	Dilution	Batch	Prepared	Analyzed	Method	Notes
		Limit							
Benzene	ND	1.0	ug/l	1	1912396	12/30/19	12/31/19	EPA 8260B	
Toluene	ND	1.0	"	"	"	"	"	"	
Ethylbenzene	ND	1.0	"	"	"	"	"	"	
Xylenes (total)	ND	2.0	"	"	"	"	"	"	

Date Sampled: **12/20/19 12:35**

Analyte	Result	Reporting	Units	Dilution	Batch	Prepared	Analyzed	Method	Notes
		Limit							
Surrogate: 1,2-Dichloroethane-d4		91.3 %	23-173		"	"	"	"	
Surrogate: Toluene-d8		105 %	20-170		"	"	"	"	
Surrogate: 4-Bromofluorobenzene		106 %	21-167		"	"	"	"	

Summit Scientific

The results in this report apply to the samples analyzed in accordance with the chain of custody document. This analytical report must be reproduced in its entirety.



Talon/LPE
1811 East Mulberry
Fort Collins CO, 80525

Project: Nelson C-1 4TH Quarter
Project Number: 701530.020.15
Project Manager: Jennifer Galles

Reported:
01/02/20 10:35

MW-31
1912324-23 (Water)

Summit Scientific

Volatile Organic Compounds by EPA Method 8260B

Date Sampled: **12/20/19 12:40**

Analyte	Result	Reporting	Units	Dilution	Batch	Prepared	Analyzed	Method	Notes
		Limit							
Benzene	ND	1.0	ug/l	1	1912396	12/30/19	12/31/19	EPA 8260B	
Toluene	ND	1.0	"	"	"	"	"	"	
Ethylbenzene	ND	1.0	"	"	"	"	"	"	
Xylenes (total)	ND	2.0	"	"	"	"	"	"	

Date Sampled: **12/20/19 12:40**

Analyte	Result	Reporting	Units	Dilution	Batch	Prepared	Analyzed	Method	Notes
		Limit							
Surrogate: 1,2-Dichloroethane-d4		97.3 %	23-173		"	"	"	"	
Surrogate: Toluene-d8		103 %	20-170		"	"	"	"	
Surrogate: 4-Bromofluorobenzene		108 %	21-167		"	"	"	"	

Summit Scientific

The results in this report apply to the samples analyzed in accordance with the chain of custody document. This analytical report must be reproduced in its entirety.



Talon/LPE
1811 East Mulberry
Fort Collins CO, 80525

Project: Nelson C-1 4TH Quarter
Project Number: 701530.020.15
Project Manager: Jennifer Galles

Reported:
01/02/20 10:35

DUP-A
1912324-24 (Water)

Summit Scientific

Volatile Organic Compounds by EPA Method 8260B

Date Sampled: **12/20/19 12:45**

Analyte	Result	Reporting	Units	Dilution	Batch	Prepared	Analyzed	Method	Notes
		Limit							
Benzene	ND	1.0	ug/l	1	1912396	12/30/19	12/31/19	EPA 8260B	
Toluene	ND	1.0	"	"	"	"	"	"	
Ethylbenzene	ND	1.0	"	"	"	"	"	"	
Xylenes (total)	ND	2.0	"	"	"	"	"	"	

Date Sampled: **12/20/19 12:45**

Analyte	Result	Reporting	Units	Dilution	Batch	Prepared	Analyzed	Method	Notes
		Limit							
Surrogate: 1,2-Dichloroethane-d4		101 %	23-173		"	"	"	"	
Surrogate: Toluene-d8		110 %	20-170		"	"	"	"	
Surrogate: 4-Bromofluorobenzene		107 %	21-167		"	"	"	"	

Summit Scientific

The results in this report apply to the samples analyzed in accordance with the chain of custody document. This analytical report must be reproduced in its entirety.



Talon/LPE
1811 East Mulberry
Fort Collins CO, 80525

Project: Nelson C-1 4TH Quarter
Project Number: 701530.020.15
Project Manager: Jennifer Galles

Reported:
01/02/20 10:35

DUP-B
1912324-25 (Water)

Summit Scientific

Volatile Organic Compounds by EPA Method 8260B

Date Sampled: **12/20/19 12:50**

Analyte	Result	Reporting	Units	Dilution	Batch	Prepared	Analyzed	Method	Notes
		Limit							
Benzene	830	10	ug/l	10	1912396	12/30/19	12/31/19	EPA 8260B	
Toluene	210	1.0	"	1	"	"	"	"	
Ethylbenzene	160	1.0	"	"	"	"	"	"	
Xylenes (total)	390	2.0	"	"	"	"	"	"	

Date Sampled: **12/20/19 12:50**

Analyte	Result	Reporting	Units	Dilution	Batch	Prepared	Analyzed	Method	Notes
		Limit							
Surrogate: 1,2-Dichloroethane-d4		105 %	23-173		"	"	"	"	
Surrogate: Toluene-d8		100 %	20-170		"	"	"	"	
Surrogate: 4-Bromofluorobenzene		113 %	21-167		"	"	"	"	

Summit Scientific

The results in this report apply to the samples analyzed in accordance with the chain of custody document. This analytical report must be reproduced in its entirety.



Talon/LPE
1811 East Mulberry
Fort Collins CO, 80525

Project: Nelson C-1 4TH Quarter
Project Number: 701530.020.15
Project Manager: Jennifer Galles

Reported:
01/02/20 10:35

DUP-C
1912324-26 (Water)

Summit Scientific

Volatile Organic Compounds by EPA Method 8260B

Date Sampled: **12/20/19 12:55**

Analyte	Result	Reporting		Units	Dilution	Batch	Prepared	Analyzed	Method	Notes
		Limit								
Benzene	8100	100		ug/l	100	1912396	12/30/19	01/01/20	EPA 8260B	
Toluene	10000	100		"	"	"	"	"	"	
Ethylbenzene	770	100		"	"	"	"	"	"	
Xylenes (total)	5600	200		"	"	"	"	"	"	

Date Sampled: **12/20/19 12:55**

Analyte	Result	Reporting		Units	Dilution	Batch	Prepared	Analyzed	Method	Notes
		Limit								
Surrogate: 1,2-Dichloroethane-d4		107 %		23-173		"	"	"	"	
Surrogate: Toluene-d8		108 %		20-170		"	"	"	"	
Surrogate: 4-Bromofluorobenzene		98.6 %		21-167		"	"	"	"	

Summit Scientific

The results in this report apply to the samples analyzed in accordance with the chain of custody document. This analytical report must be reproduced in its entirety.



Talon/LPE
1811 East Mulberry
Fort Collins CO, 80525

Project: Nelson C-1 4TH Quarter
Project Number: 701530.020.15
Project Manager: Jennifer Galles

Reported:
01/02/20 10:35

Volatile Organic Compounds by EPA Method 8260B - Quality Control

Summit Scientific

Analyte	Reporting			Spike	Source		%REC		RPD	
	Result	Limit	Units	Level	Result	%REC	Limits	RPD	Limit	Notes

Batch 1912388 - EPA 5030 Water MS

Blank (1912388-BLK1)

Prepared & Analyzed: 12/30/19

Benzene	ND	1.0	ug/l							
Toluene	ND	1.0	"							
Ethylbenzene	ND	1.0	"							
Xylenes (total)	ND	2.0	"							
Surrogate: 1,2-Dichloroethane-d4	16.0		"	13.3		120	23-173			
Surrogate: Toluene-d8	13.0		"	13.3		97.5	20-170			
Surrogate: 4-Bromofluorobenzene	13.6		"	13.3		102	21-167			

LCS (1912388-BS1)

Prepared: 12/30/19 Analyzed: 12/31/19

Benzene	36.6	1.0	ug/l	33.3		110	51-132			
Toluene	35.8	1.0	"	33.3		107	51-138			
Ethylbenzene	34.0	1.0	"	33.3		102	58-146			
m,p-Xylene	65.5	2.0	"	66.7		98.3	57-144			
o-Xylene	32.8	1.0	"	33.3		98.3	53-146			
Surrogate: 1,2-Dichloroethane-d4	15.9		"	13.3		119	23-173			
Surrogate: Toluene-d8	15.3		"	13.3		114	20-170			
Surrogate: 4-Bromofluorobenzene	13.4		"	13.3		101	21-167			

Matrix Spike (1912388-MS1)

Source: 1912324-06

Prepared: 12/30/19 Analyzed: 01/01/20

Benzene	37.4	1.0	ug/l	33.3	ND	112	34-141			
Toluene	37.3	1.0	"	33.3	2.10	106	27-151			
Ethylbenzene	38.3	1.0	"	33.3	ND	115	29-160			
m,p-Xylene	74.8	2.0	"	66.7	2.64	108	20-166			
o-Xylene	37.1	1.0	"	33.3	ND	111	33-159			
Surrogate: 1,2-Dichloroethane-d4	15.7		"	13.3		118	23-173			
Surrogate: Toluene-d8	13.4		"	13.3		100	20-170			
Surrogate: 4-Bromofluorobenzene	13.5		"	13.3		101	21-167			

Summit Scientific

The results in this report apply to the samples analyzed in accordance with the chain of custody document. This analytical report must be reproduced in its entirety.



Talon/LPE
1811 East Mulberry
Fort Collins CO, 80525

Project: Nelson C-1 4TH Quarter
Project Number: 701530.020.15
Project Manager: Jennifer Galles

Reported:
01/02/20 10:35

Volatile Organic Compounds by EPA Method 8260B - Quality Control
Summit Scientific

Analyte	Reporting			Spike	Source		%REC		RPD	
	Result	Limit	Units	Level	Result	%REC	Limits	RPD	Limit	Notes

Batch 1912388 - EPA 5030 Water MS

Matrix Spike Dup (1912388-MSD1)				Source: 1912324-06		Prepared: 12/30/19 Analyzed: 01/01/20				
Benzene	39.7	1.0	ug/l	33.3	ND	119	34-141	5.93	30	
Toluene	42.0	1.0	"	33.3	2.10	120	27-151	11.8	30	
Ethylbenzene	45.5	1.0	"	33.3	ND	136	29-160	17.0	30	
m,p-Xylene	87.1	2.0	"	66.7	2.64	127	20-166	15.2	30	
o-Xylene	48.3	1.0	"	33.3	ND	145	33-159	26.3	30	
Surrogate: 1,2-Dichloroethane-d4	17.4		"	13.3		131	23-173			
Surrogate: Toluene-d8	13.4		"	13.3		100	20-170			
Surrogate: 4-Bromofluorobenzene	4.82		"	13.3		36.2	21-167			

Batch 1912396 - EPA 5030 Water MS

Blank (1912396-BLK1)				Prepared: 12/30/19 Analyzed: 12/31/19						
Benzene	ND	1.0	ug/l							
Toluene	ND	1.0	"							
Ethylbenzene	ND	1.0	"							
Xylenes (total)	ND	2.0	"							
Surrogate: 1,2-Dichloroethane-d4	13.1		"	13.3		98.5	23-173			
Surrogate: Toluene-d8	13.8		"	13.3		104	20-170			
Surrogate: 4-Bromofluorobenzene	14.8		"	13.3		111	21-167			

LCS (1912396-BS1)				Prepared: 12/30/19 Analyzed: 12/31/19						
Benzene	56.7	1.0	ug/l	66.7		85.0	51-132			
Toluene	56.6	1.0	"	66.7		84.9	51-138			
Ethylbenzene	57.2	1.0	"	66.7		85.8	58-146			
m,p-Xylene	118	2.0	"	133		88.5	57-144			
o-Xylene	56.2	1.0	"	66.7		84.3	53-146			
Surrogate: 1,2-Dichloroethane-d4	13.1		"	13.3		98.4	23-173			
Surrogate: Toluene-d8	13.4		"	13.3		101	20-170			
Surrogate: 4-Bromofluorobenzene	13.1		"	13.3		98.3	21-167			

Summit Scientific

The results in this report apply to the samples analyzed in accordance with the chain of custody document. This analytical report must be reproduced in its entirety.



Talon/LPE
1811 East Mulberry
Fort Collins CO, 80525

Project: Nelson C-1 4TH Quarter
Project Number: 701530.020.15
Project Manager: Jennifer Galles

Reported:
01/02/20 10:35

Volatile Organic Compounds by EPA Method 8260B - Quality Control
Summit Scientific

Analyte	Reporting			Spike	Source		%REC		RPD	
	Result	Limit	Units	Level	Result	%REC	Limits	RPD	Limit	Notes

Batch 1912396 - EPA 5030 Water MS

Matrix Spike (1912396-MS1)		Source: 1912324-21			Prepared: 12/30/19		Analyzed: 12/31/19			
Benzene	55.4	1.0	ug/l	66.7	ND	83.1	34-141			
Toluene	55.2	1.0	"	66.7	ND	82.9	27-151			
Ethylbenzene	56.1	1.0	"	66.7	ND	84.1	29-160			
m,p-Xylene	114	2.0	"	133	ND	85.7	20-166			
o-Xylene	55.3	1.0	"	66.7	ND	83.0	33-159			
<hr/>										
Surrogate: 1,2-Dichloroethane-d4	13.2		"	13.3		99.4	23-173			
Surrogate: Toluene-d8	13.4		"	13.3		100	20-170			
Surrogate: 4-Bromofluorobenzene	13.5		"	13.3		101	21-167			
<hr/>										
Matrix Spike Dup (1912396-MSD1)		Source: 1912324-21			Prepared: 12/30/19		Analyzed: 12/31/19			
Benzene	53.7	1.0	ug/l	66.7	ND	80.5	34-141	3.10	30	
Toluene	53.6	1.0	"	66.7	ND	80.4	27-151	2.99	30	
Ethylbenzene	53.1	1.0	"	66.7	ND	79.7	29-160	5.37	30	
m,p-Xylene	109	2.0	"	133	ND	81.5	20-166	4.98	30	
o-Xylene	52.8	1.0	"	66.7	ND	79.2	33-159	4.64	30	
<hr/>										
Surrogate: 1,2-Dichloroethane-d4	13.6		"	13.3		102	23-173			
Surrogate: Toluene-d8	13.5		"	13.3		101	20-170			
Surrogate: 4-Bromofluorobenzene	13.3		"	13.3		100	21-167			

Summit Scientific

The results in this report apply to the samples analyzed in accordance with the chain of custody document. This analytical report must be reproduced in its entirety.



Talon/LPE
1811 East Mulberry
Fort Collins CO, 80525

Project: Nelson C-1 4TH Quarter
Project Number: 701530.020.15
Project Manager: Jennifer Galles

Reported:
01/02/20 10:35

Notes and Definitions

DET	Analyte DETECTED
ND	Analyte NOT DETECTED at or above the reporting limit
NR	Not Reported
dry	Sample results reported on a dry weight basis
RPD	Relative Percent Difference

Attachment 4
Field Forms

WELL SAMPLING LOG

Project: Nelson C-1 4th quarter monitoring Project Number: 701530.022.15
 Address: Weld County Date: 12/19/2019 - 12/20/2019
 Sampled By: Alex L. BenB. Jason L. Lovick. Weather: 40's / wind
 Laboratory/Analyses: BTEX Site Manager: Jason Loverton

Monitoring Well	Time	Depth to NAPL (feet)	Depth To Water (feet)	Total Depth (feet)	Volume Purged (gal)	Comments
1		29.95	30.02	40.33	8/18	Dry NS
2			30.70	42.11	10/22	Dry
3		32.89	33.18	41.11	8/15.5	Dry NS
4		30.05	30.35	40.35	9/20	Dry NS
5			35.31	41.68	6/12.5	Dry
6		33.68	33.71	47.10	14/26	Dry, needs Twine
7		29.41	29.72	40.79	11/22.5	Dry, needs Twine NS
8		/	28.07	41.91	15/27	Dry
9		/	28.11	34.69	6/13	Dry
10			34.31	39.85	5/12	Dry
11			38.57	44.77	5/12	Dry
12			37.59	40.34	1.5/5.5	Dry
13			31.40	40.35	8/17.5	Dry
14			30.49	41.79	14/22	Dry
15		33.45	33.48	35.36	1/4	Dry
16		/	28.39	40.43	16/24	Dry
17		32.50	33.50	46.02	13/26.5	Dry NS

Repairs made: _____ Repairs needed: _____
 No. of wells sampled: _____ Date shipped: _____
 Other comments: _____

WELL SAMPLING LOG

Project: Nelson c1 4th quarter monitoring Project Number: 701530.020.15
 Address: Weld County Date: 12/19/2019 - 12/20/2019
 Sampled By: Alex L. Ben B. Jason L. Levi K. Weather: 40's / Wind
 Laboratory/Analyses: BTEX Site Manager: Jason Leverton

Monitoring Well	Time	Depth to NAPL (feet)	Depth To Water (feet)	Total Depth (feet)	Volume Purged (gal)	Comments
18			35.39	46.82	12/22	Dry
19			37.44	40.22	1.5/5.5	Dry
X 20		34.08	34.22	41.22	6.5/14	Dry * No Sample .14 FSH
21		/	31.11	40.11	9/18	Dry
22		/	32.55	39.66	7/14	Dry * Possible COGAC
X 23		34.15	34.40	35.22	1/2	* No Sample .25 FSH
24		/	37.20	47.27	9/20	Dry * Possible COGAC
25		/	29.03	31.82	2/5.5	Dry
26		/	36.02	36.85	1/2	Dry
X 27		42.04	42.90	45.12	3.5/6	* No Sample .26 FSH
28		/	40.18	56.81	29/33	Dry
29		/	45.21	46.13	1/2	Dry
30		/	33.17	37.20	4.5/8	Dry
31		/	29.95	31.47	1/3	Dry

pics/
poly
bailer-

Repairs made: _____ Repairs needed: _____
 No. of wells sampled: _____ Date shipped: _____

Other comments: _____

Dup A MW 11

Dup B MW 14

Dup C MW 16