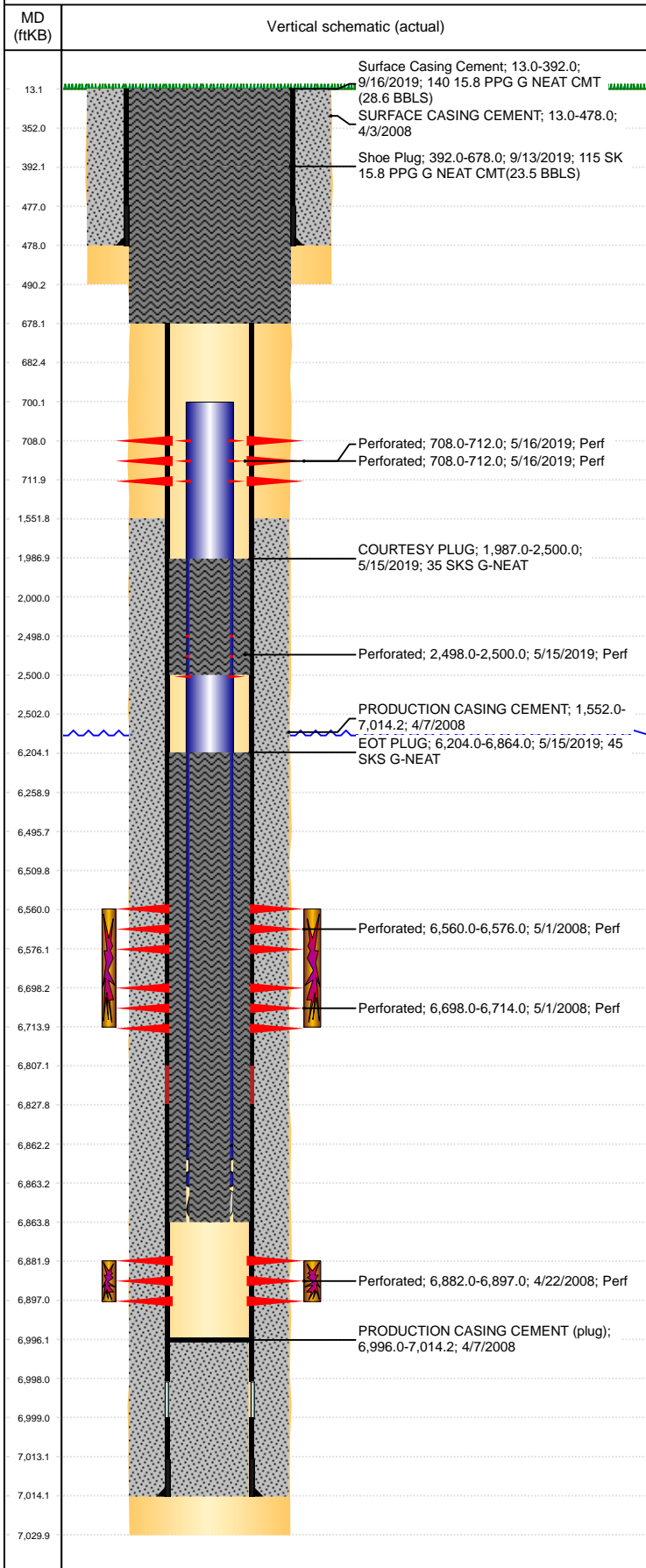


Well Name: DPG F01-13

VERTICAL, ORIGINAL HOLE, 4/24/2020 9:20:03 AM



Well Header									
API 05-123-25569		Business Unit DJ BASIN			District 15		Well Config VERTICAL		
KB - GL / MSL (ft... 13.00		Spud Date 4/7/2008		P & A Date 1/23/2020		Well Production Status PA			SoRT Yes
Comment									
Surface Location (Congressional)									
Qtr 3 SW	Qtr 4 SW	Section 1	Twnshp 5	Twnsh... N	Range 65	Rng E/... W	Actual Latitude (°) 40.42277238	Actual Longitude (°) -104.61874739	
Wellbore Sections									
Section Des			Size (in)			Act Top, MD (ftKB)		Act Btm, MD (ftKB)	
SURFACE			12 1/4			13		490	
PRODUCTION			7 7/8			490		7,030	
Casing Strings									
Csg Des		Run Date		OD (in)	Wt/Len (lb/ft)	Grade	Top, MD (ftKB)	MD (ftKB)	
Surface		4/3/2008		8 5/8	24.00	J-55	13.0	478.0	
Production		4/7/2008		4 1/2	11.60	M-80	13.0	7,014.2	
Cement									
Des				Start Date		Top (ftKB)		Btm (ftKB)	
SURFACE CASING CEMENT				4/3/2008		13.0		478.0	
PRODUCTION CASING CEMENT				4/7/2008		1,552.0		7,014.2	
EOT PLUG				5/15/2019		6,204.0		6,864.0	
COURTESY PLUG				5/15/2019		1,987.0		2,500.0	
Shoe Plug				9/13/2019		352.0		678.0	
Surface Casing Cement				9/16/2019		13.0		392.0	
Zone Statuses									
Zone Name	Status Date	Status	Fluid Type	Job			Prod Method		
NIOBRARA	5/27/2008	PR		DRILLING/COMPLETION - ORIGINAL, 4/3/2008...					
NIOBRARA	5/15/2019	P&A		PLUG AND ABANDON, 5/14/2019 07:00					
CODELL	5/27/2008	PR		DRILLING/COMPLETION - ORIGINAL, 4/3/2008...					
CODELL	5/15/2019	P&A							
Perforation Data									
Linked Zone		Bnch/Stg	Entered Shot Total	Top (ftKB)		Btm (ftKB)		Date	
NIOBRARA, ORIGINAL HOLE NIOBRARA, ORIGINAL HOLE CODELL, ORIGINAL HOLE		A B	24	708.00		712.00		5/16/2019	
			24	708.00		712.00		5/16/2019	
			8	2,498.00		2,500.00		5/15/2019	
			64	6,560.00		6,576.00		5/1/2008	
			64	6,698.00		6,714.00		5/1/2008	
			60	6,882.00		6,897.00		4/22/2008	
Stimulation Intervals									
Zone			Start Date		Top (ftKB)		Btm (ftKB)		
NIOBRARA, ORIGINAL HOLE			5/1/2008		6,560.0		6,714.0		
CODELL, ORIGINAL HOLE			5/1/2008		6,882.0		6,897.0		
Other In Hole									
Run Date	Des			Make		OD (in)	Top (ftKB)	Btm (ftKB)	
Logs									
Date		Type				Top, MD (ftKB)		Btm, MD (ftKB)	
4/6/2008		Caliper/Comp. Density/Neutron/GR/SP/ML				2,500.0		7,010.0	
4/6/2008		DIL/GR/SP/Caliper				460.0		7,030.0	
4/18/2008		CBL/CCL/GR				1,450.0		6,972.0	
Plug Back Total Depths									
Date		Type		Com				Depth (ftKB)	
4/18/2008		CEMENT PLUG		DEPTH LOGGER				6,979.0	
9/26/2008		PLUG REMNANTS						6,996.0	