



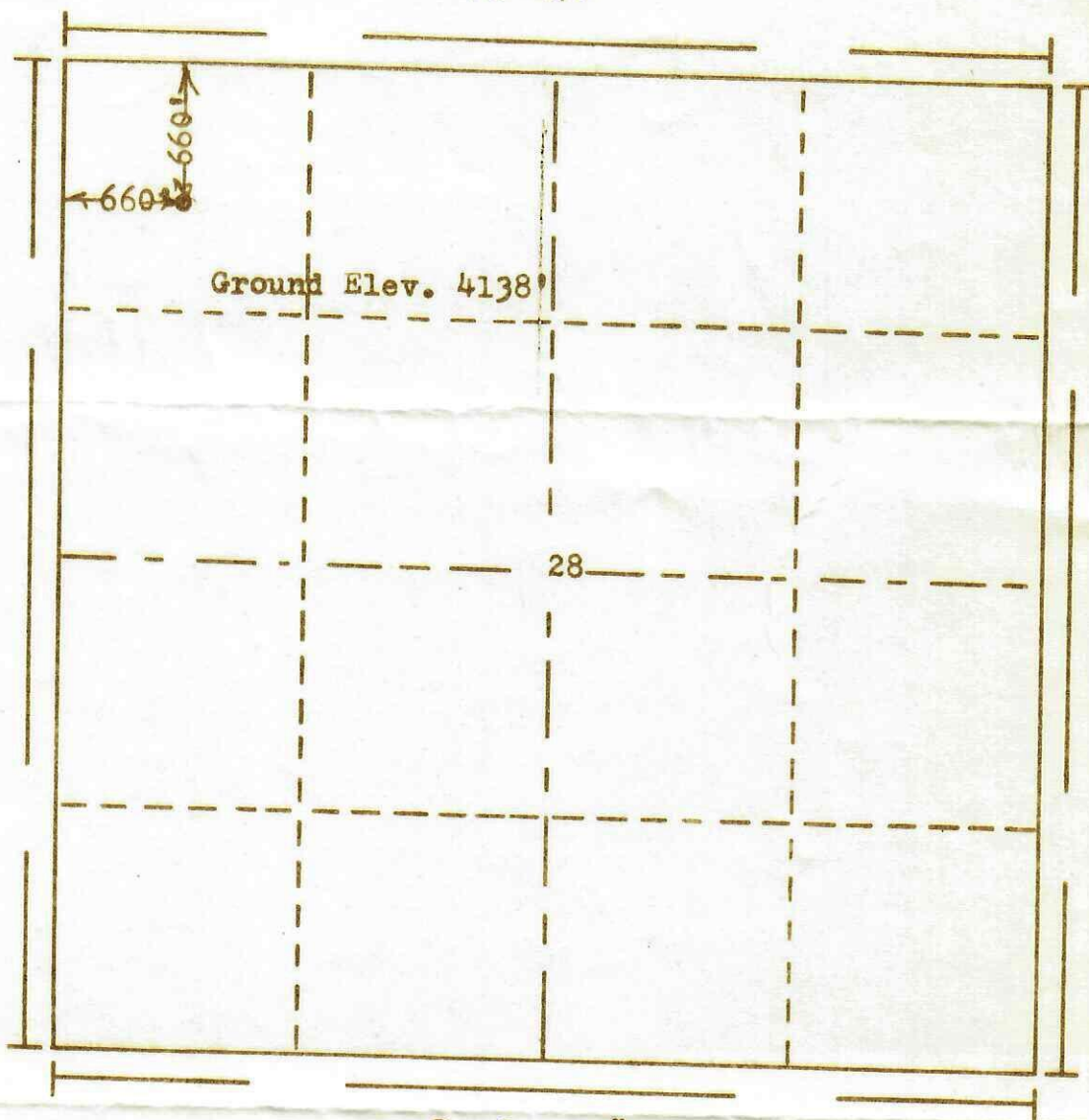
FORM F-106



MAY 15 1972

COLO. OIL & GAS CONS. COMM.

R. 47W



Scale... 1" = 1000'

Powers Elevation Company, Inc. of Denver, Colorado
has in accordance with a request from Mr. Vickory
for Petro-Lewis Corp.

determined the location of No. 4-28 Cleaves
to be CNW NW Section 28 Township 16S
Range 47W of the 6th Principal Meridian
Cheyenne County, Colorado

I hereby certify that this plat is an
accurate representation of a correct
survey showing the location of

Date: 5-8-72

[Signature]
Licensed Land Surveyor No. 2853
State of Colorado