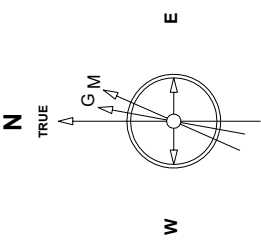


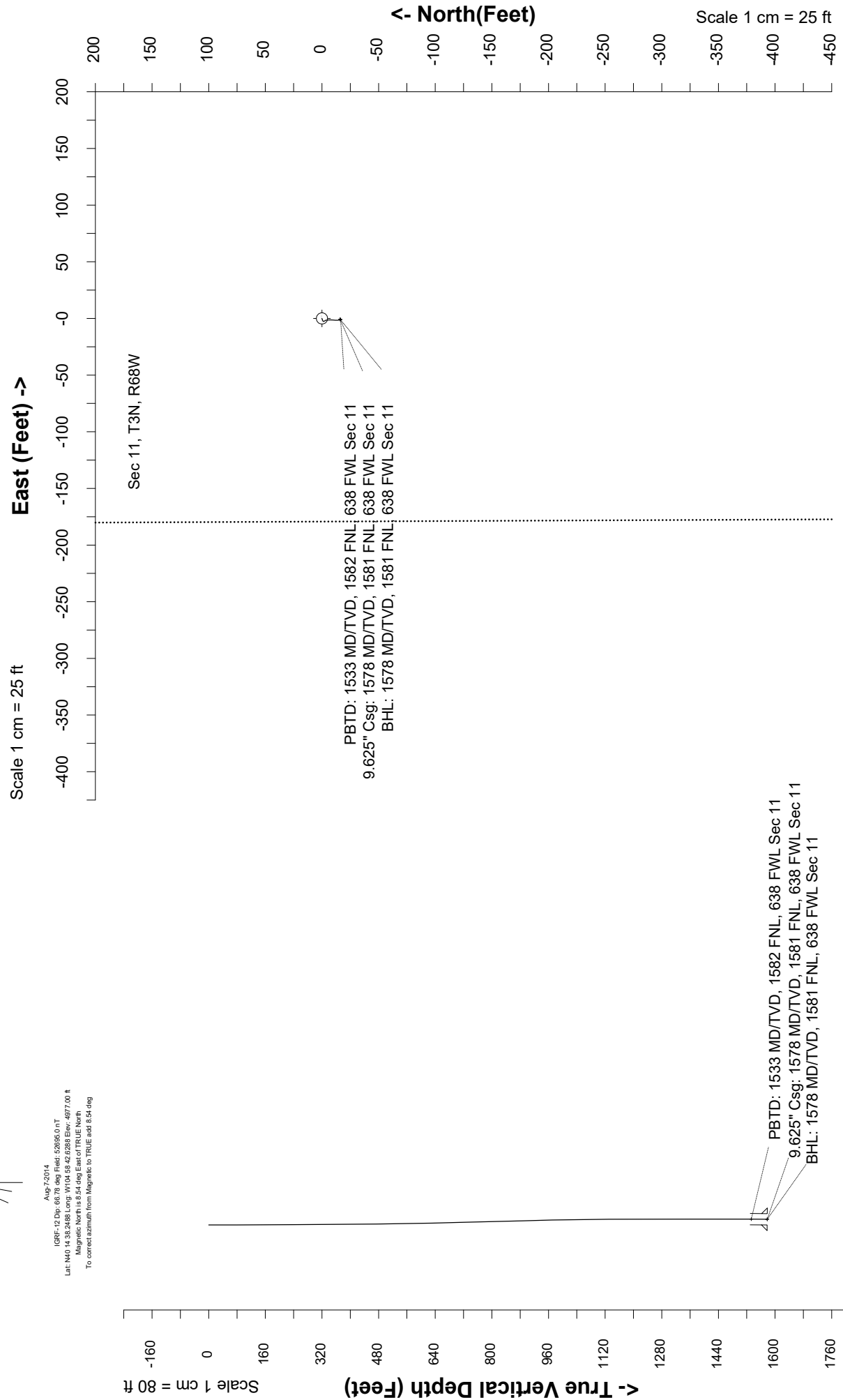
Great Western Operating Company, LLC

Location	Colorado	Slot	S17 - Postle IC 09-259HC
Field	Wattenburg	Well	Postle IC 09-259HC
Installation	Postle West	Wellbore	Postle IC 09-259HC (AWB)

Created by: inmount
 Date plotted: 9-Apr-2020
 Plot reference is Postle IC 09-259HC (AWB).
 Ref wellpath is Postle IC 09-259HC (AWP#1).
 Coordinates are in Feet reference S17 - Postle IC 09-259HC.
 True Vertical Depths are reference Rig Datum.
 Measured Depths are reference Rig Datum.
 Rig Datum: Actual Datum #1
 Rig Datum to Mean Sea Level: 4983.00 ft.
 Plot North is aligned to TRUE North.



Aug 7, 2014
 IGRF-12 Dip: 66.78 deg Field: 52956.0 nT
 Lat: N40 14.38 2488 Long: W104 58 42 6288 Elev: 4877.00 ft
 Magnetic North is 8.54 deg East of TRUE North
 To correct azimuth from Magnetic to TRUE add 8.54 deg



Great Western Operating Co, LLC
 Directional Survey Report
 Wellpath: Postle IC 09-259HC
 MDs and TVDs are from Rig Floor 4983.0ft above Mean Sea Level

Wellbore Information

Date Created	Date Revised	API #	RKB above GL	Well Name
Apr-9-2020	Apr-9-2020	05-123-47375	6.00	Postle IC 09-259HC

Slot Coordinates

Latitude	Longitude
40.24367700	-104.97749100

Pad Information

Pad Name	Ground Elev.
Postle West	4977.00

Field

Name
Wattenburg

Wellpath Report

MD[ft]	Inc[deg]	Azi[deg]	TVD[ft]	North[ft]	East[ft]	DLS [deg/100ft]	Vertical Section[ft]	Lat - NAD 83	Long - NAD 83
0.00	0.00	0.00	0.00	0.00	0.00		0.00	40.24367700	-104.97749100
79.00	0.75	251.57	79.00	-0.16	-0.48	0.96	0.19	40.24367656	-104.97749273
167.00	0.62	253.51	166.99	-0.48	-1.49	0.15	0.56	40.24367569	-104.97749633
259.00	0.57	235.49	258.99	-0.88	-2.34	0.21	1.00	40.24367459	-104.97749939
351.00	0.35	175.37	350.98	-1.42	-2.70	0.54	1.56	40.24367311	-104.97750066
441.00	0.88	140.48	440.98	-2.23	-2.23	0.70	2.34	40.24367089	-104.97749900
531.00	0.83	159.99	530.97	-3.37	-1.57	0.33	3.45	40.24366775	-104.97749663
621.00	1.19	180.21	620.96	-4.92	-1.35	0.56	4.98	40.24366350	-104.97749584
711.00	1.67	176.78	710.93	-7.16	-1.28	0.54	7.22	40.24365734	-104.97749559
800.00	1.45	191.63	799.89	-9.56	-1.44	0.52	9.62	40.24365076	-104.97749614
890.00	1.45	175.73	889.87	-11.81	-1.58	0.45	11.88	40.24364458	-104.97749666
980.00	1.23	184.69	979.84	-13.91	-1.57	0.34	13.97	40.24363882	-104.97749664
1070.00	0.97	160.96	1069.82	-15.59	-1.40	0.58	15.64	40.24363420	-104.97749603
1160.00	0.26	126.95	1159.82	-16.43	-0.99	0.85	16.46	40.24363189	-104.97749456
1250.00	0.09	36.77	1249.82	-16.50	-0.79	0.31	16.52	40.24363170	-104.97749382
1340.00	0.13	214.40	1339.82	-16.53	-0.80	0.24	16.55	40.24363163	-104.97749388
1430.00	0.04	254.65	1429.82	-16.62	-0.89	0.11	16.65	40.24363138	-104.97749419
1528.00	0.26	325.49	1527.82	-16.45	-1.05	0.25	16.48	40.24363185	-104.97749476
1534.00	0.56	27.99	1533.82	-16.41	-1.04	8.28	16.44	40.24363196	-104.97749474
1578.00	0.56	27.99	1577.82	-16.03	-0.84	0.00	16.05	40.24363300	-104.97749402

Comments

MD[ft]	TVD[ft]	North[ft]	East[ft]	Lat - NAD 83	Long - NAD 83	Comment
1533.10	1532.92	-16.42	-1.05	40.24363193	-104.97749475	PBTD: 1533 MD/TVD, 1582 FNL, 638 FWL Sec 11
1578.00	1577.82	-16.03	-0.84	40.24363300	-104.97749402	9.625" Csg: 1578 MD/TVD, 1581 FNL, 638 FWL Sec
1578.00	1577.82	-16.03	-0.84	40.24363300	-104.97749402	BHL: 1578 MD/TVD, 1581 FNL, 638 FWL Sec 11

Hole Sections

Diameter [in]	Start MD[ft]	Start TVD[ft]	Start North[ft]	Start East[ft]	End MD[ft]	End TVD[ft]	End North[ft]	End East[ft]
13.500	0.00	0.00	0.00	0.00	1578.00	1577.82	-16.03	-0.84

Casings

Name	Top MD[ft]	Top TVD[ft]	Top North[ft]	Top East[ft]	Shoe MD[ft]	Shoe TVD[ft]	Shoe North[ft]	Shoe East[ft]
9 5/8in Casing	0.00	0.00	0.00	0.00	1578.00	1577.82	-16.03	-0.84

Survey Tool Program

Reference	Survey Name	MD[ft]	TVD[ft]	Survey Tool
827041	Surface	1578.00	1577.82	MWD

Coordinates are from Slot
 MD's and TVD's are from Rig Floor 4983.0ft above Mean Sea Level
 Vertical Section is from Wellhead on azimuth 183.01 degrees
 Bottom hole distance is 16.05 Feet on azimuth 183.01 degrees from Wellhead
 Survey calculation uses Minimum Curvature method