



PIONEER

Pioneer Energy Services

CEMENT BOND LOG WITH GAMMA RAY

Comp. ANADARKO PETROLEUM CORP.
Well WEICHEL 15-14A
Field WATTENBERG
Co. WELD
State COLORADO

Company **ANADARKO PETROLEUM CORP.**
Well **WEICHEL 15-14A**
Field **WATTENBERG**
County **WELD** State **COLORADO**

Location: API #: 05-123-20338
SW SE
LAT: 40.13250 LONG: -104.62800
SEC 14 TWP 2N RGE 6SW
Permanent Datum GL Elevation 4882
Log Measured From GL 10' Above Perm. Datum
Drilling Measured From KB
Other Services
JET CUT
Elevation
K.B. 4892
D.F. 4891
G.L. 4882

Date of Service	02/12/2020		
Run Number	ONE		
Depth Driller or P8TD	7776		
Depth Logger	2000		
Bottom Log Interval	2000		
Top Log Interval	SURFACE		
Open Hole Size	7-7/8"		
Type Fluid	WATER		
Fluid Level	SURFACE		
Fluid Density	8.4		
Max. Recorded Temperature	N/A		
Max. Wellhead Pressure	ZERO		
Wellhead Connection	PACK OFF		
Estimated Cement Top	N/A		
Unit Number	P-133		
Wireline Size	9/32"		
Location	FORT MORGAN CO.		
Recorded By	P LOPEZ		
Witnessed By	MR. MIKE EDGAR		
	Size	Wt/Ft	Top
Tubing Record			Bottom
Surface Casing	8.63	24	SURFACE 918
Production Casing	4.50	11.6	SURFACE 7737
Liner Record			

<<< Fold Here >>>

All interpretations are opinions based on inferences from electrical or other measurements and Pioneer Wireline Services, LLC cannot and does not guarantee the accuracy or correctness of any interpretation, and Pioneer Wireline Services, LLC will not be liable or responsible for any loss, costs, damages, or expenses incurred or sustained by anyone resulting from any interpretation made by any of our officers, agents or employees.

Comments

N/A DENOTES NOT AVAILABLE OR NON-APPLICABLE.
TOOL ZEROED AT GROUND LEVEL
ALL WIRELINE DEPTH

THANK YOU FOR USING PIONEER ENERGY SERVICES!

Your Pioneer Energy Services Crew

Engineer: P LOPEZ
Operator: G SOTO
Operator: C COBIAN
Operator:

Tool Data - Services

RBL-DC
GR CCL

Serial Number

140141
110246

Top - Bottom

BOREID in 7.875	BOTTEMP degF 150	CASEOD in 4.5	CASETHCK in 0.25	CASEWGHT lb/ft 11.6	MAXAMPL mV 81.2	MINAMPL mV 0.7
MINATTN db/ft 0.8	PERFS No	PPT usec 249	SRFTEMP degF 0	TDEPTH ft 2000		


Variable Description

BOREID : Borehole I.D.
BOTTEMP : Bottom Hole Temperature
CASEOD : Casing O.D.
CASETHCK : Casing Thickness
CASEWGHT : Casing Weight
MAXAMPL : Maximum Amplitude

MINAMPL : Minimum Amplitude
MINATTN : Minimum Attenuation
PERFS : Perforation Flag
PPT : Predicted Pipe Time
SRFTEMP : Surface Temperature
TDEPTH : Total Depth

Sensor	Offset (ft)	Schematic	Description	Length (ft)	O.D. (in)	Weight (lb)
			Cable Head-Titan_144 1 7/16" Titan Cable Head	1.03	1.44	2.00
			Centralizer-275 Probe 2 3/4" Probe Adjustable Spring Centralizer	2.88	2.75	15.00
WVFS8	14.76		PROBE-RBT-DIGITAL-RBL-DC (FW1401-41-T) Probe 2 3/4" Radii Bond-Corrosion Package	8.75	2.75	100.00
WVFS7	14.76					
WVFS6	14.76					
WVFS5	14.76					
WVFS4	14.76					
WVFS3	14.76					
WVFS2	14.76					
WVFS1	14.76					
WVFCAL	14.76					
WV3FT	14.76					
WV5FT	13.76					
HEADVOLT	10.57		Centralizer-275 Probe 2 3/4" Probe Adjustable Spring Centralizer	2.88	2.75	15.00

CCL	6.78		PROBE-GR/CCL-ANALOG-GR/CCL-A (110246) 2 3/4" Gamma with CCL-Analog	4.54	2.75	60.00
GR	4.05		Centralizer-275 Probe 2 3/4" Probe Adjustable Spring Centralizer	2.88	2.75	15.00
			Bullnose-Titan GO Pin Pressure Cap	0.27	1.38	1.00
Dataset: anadarko_weichel 15-14a_0512320338_20200212_scbl.db: field/well/run1/pass12 Total length: 23.23 ft Total weight: 208.00 lb O.D.: 2.75 in						


PIONEER

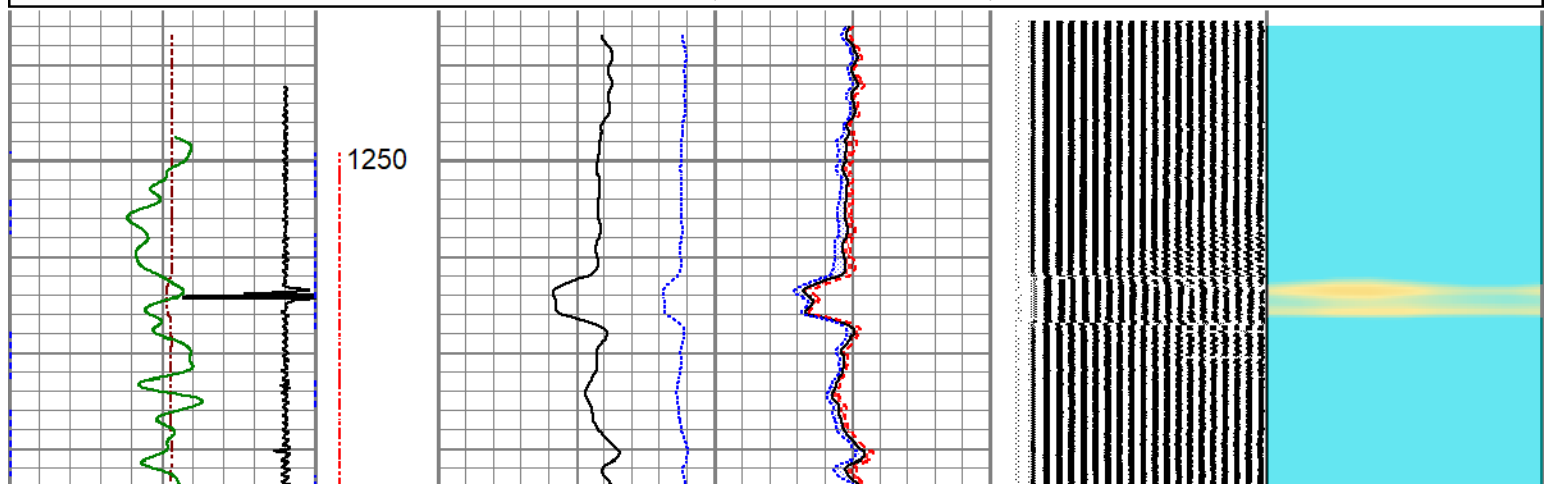
Pioneer Energy Services

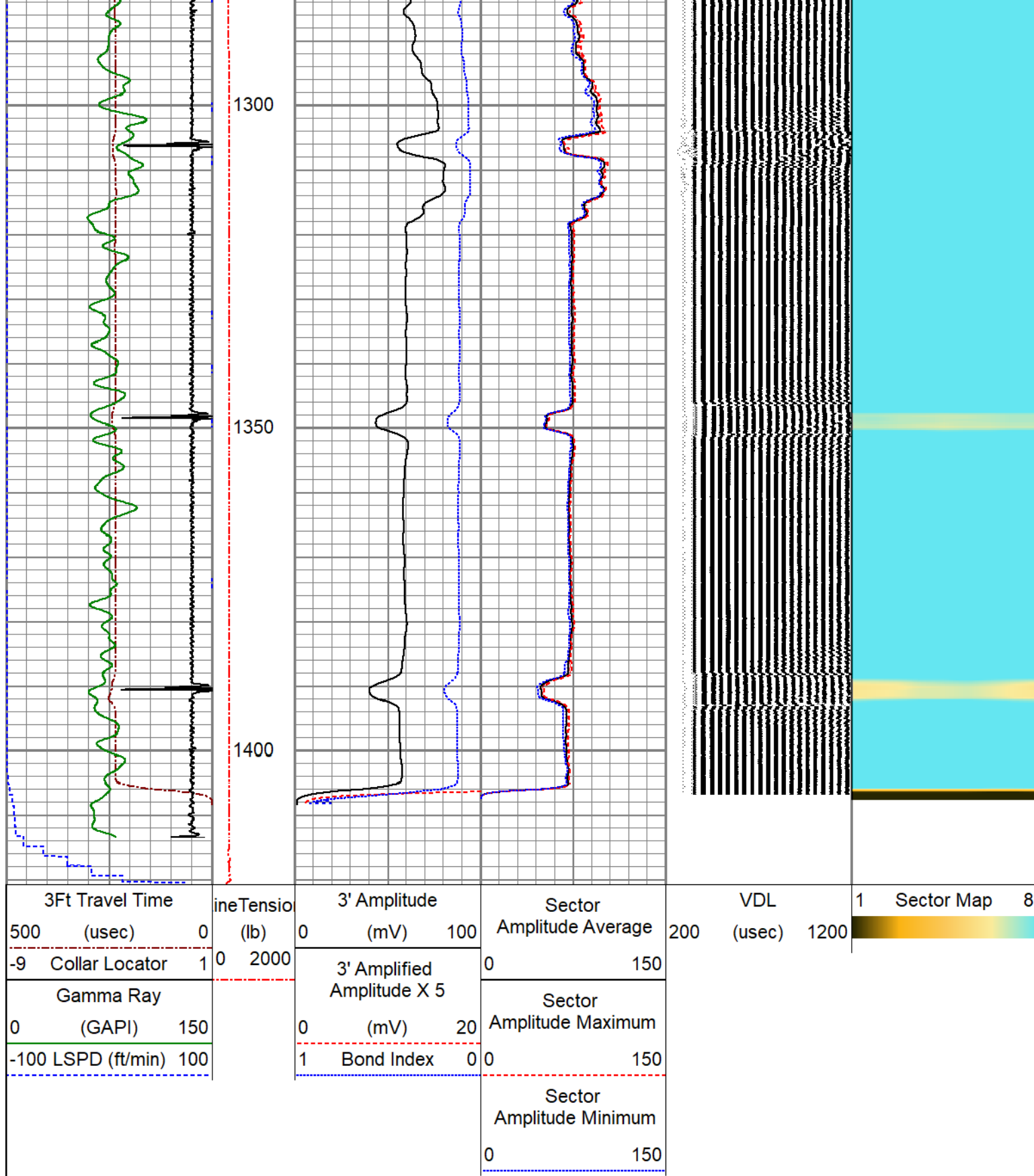
FREE PIPE SECTION


ZERO PSI APPLIED AT SURFACE

Database File anadarko_weichel 15-14a_0512320338_20200212_scbl.db
Dataset Pathname pass8
Presentation Format pinr_scbl
Dataset Creation Wed Feb 12 10:09:13 2020
Charted by Depth in Feet scaled 1:240

3Ft Travel Time	ineTensio	3' Amplitude	Sector	VDL	1	Sector Map	8
500 (usec)	0 (lb)	0 (mV) 100	Amplitude Average	200 (usec) 1200			
-9 Collar Locator	1 0 2000	3' Amplified Amplitude X 5	0 150				
Gamma Ray		0 (mV) 20	Sector Amplitude Maximum				
0 (GAPI) 150		1 Bond Index 0	0 150				
-100 LSPD (ft/min) 100			Sector Amplitude Minimum				
			0 150				








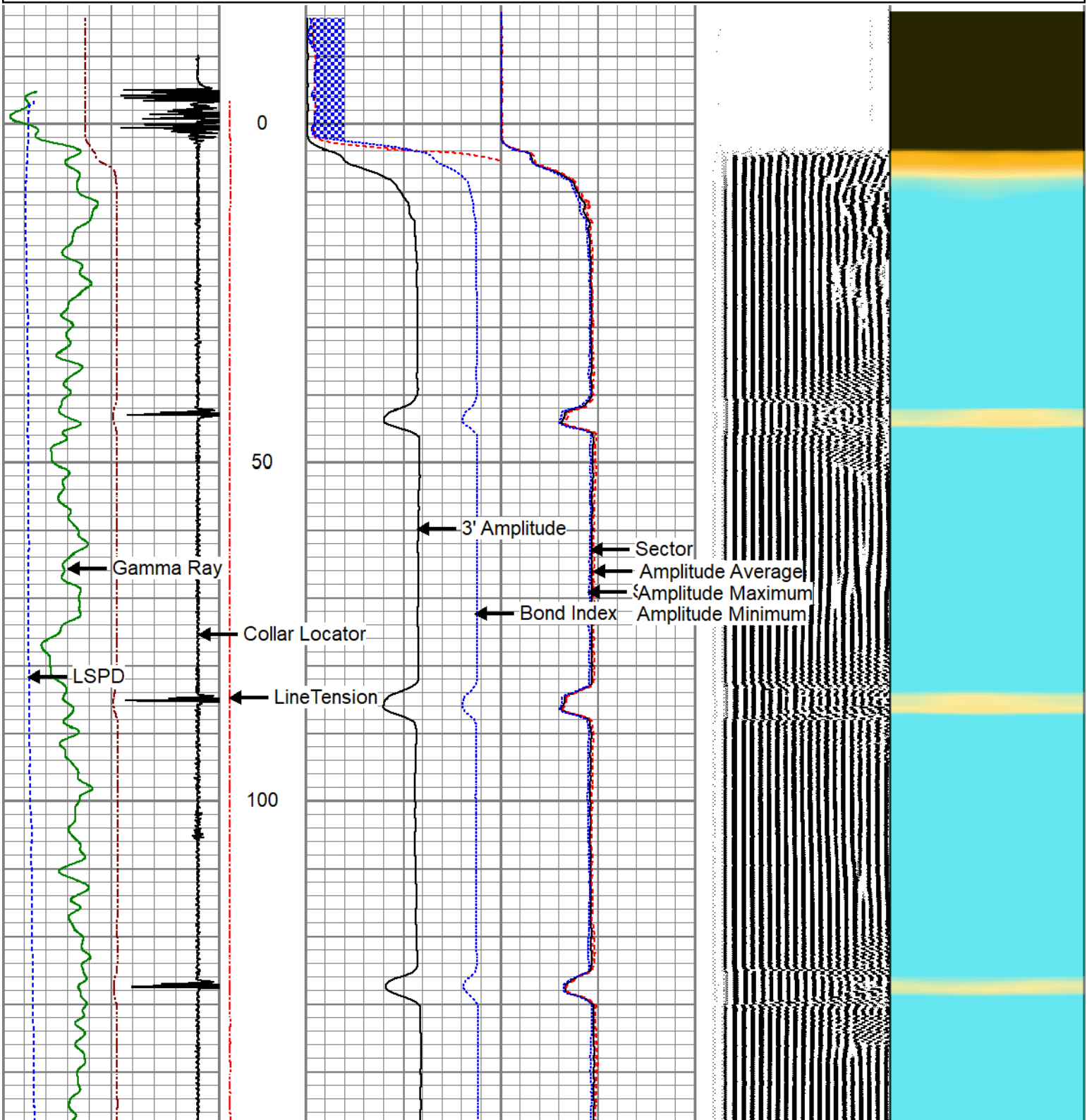
PIONEER
Pioneer Energy Services

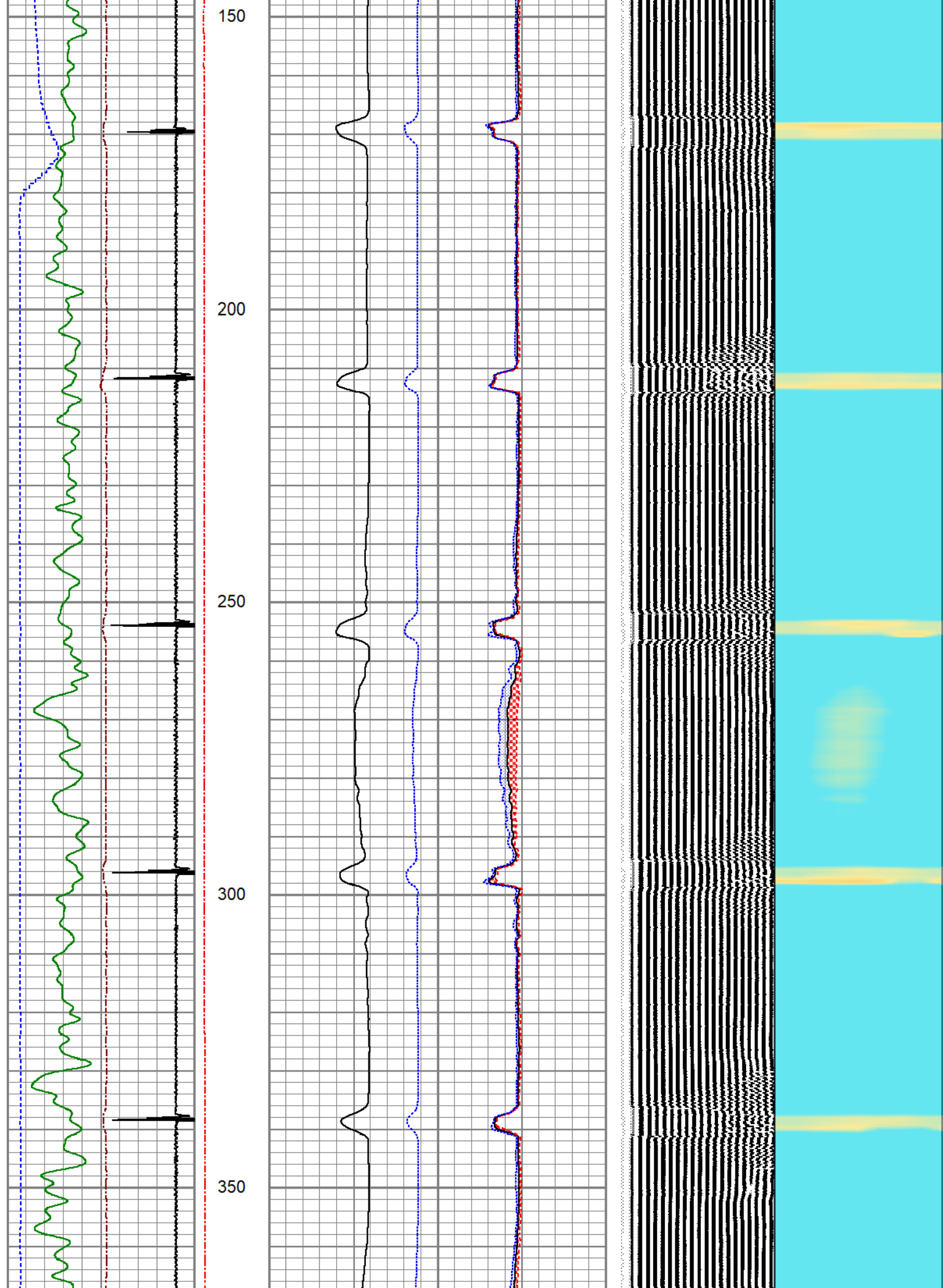
MAIN LOG

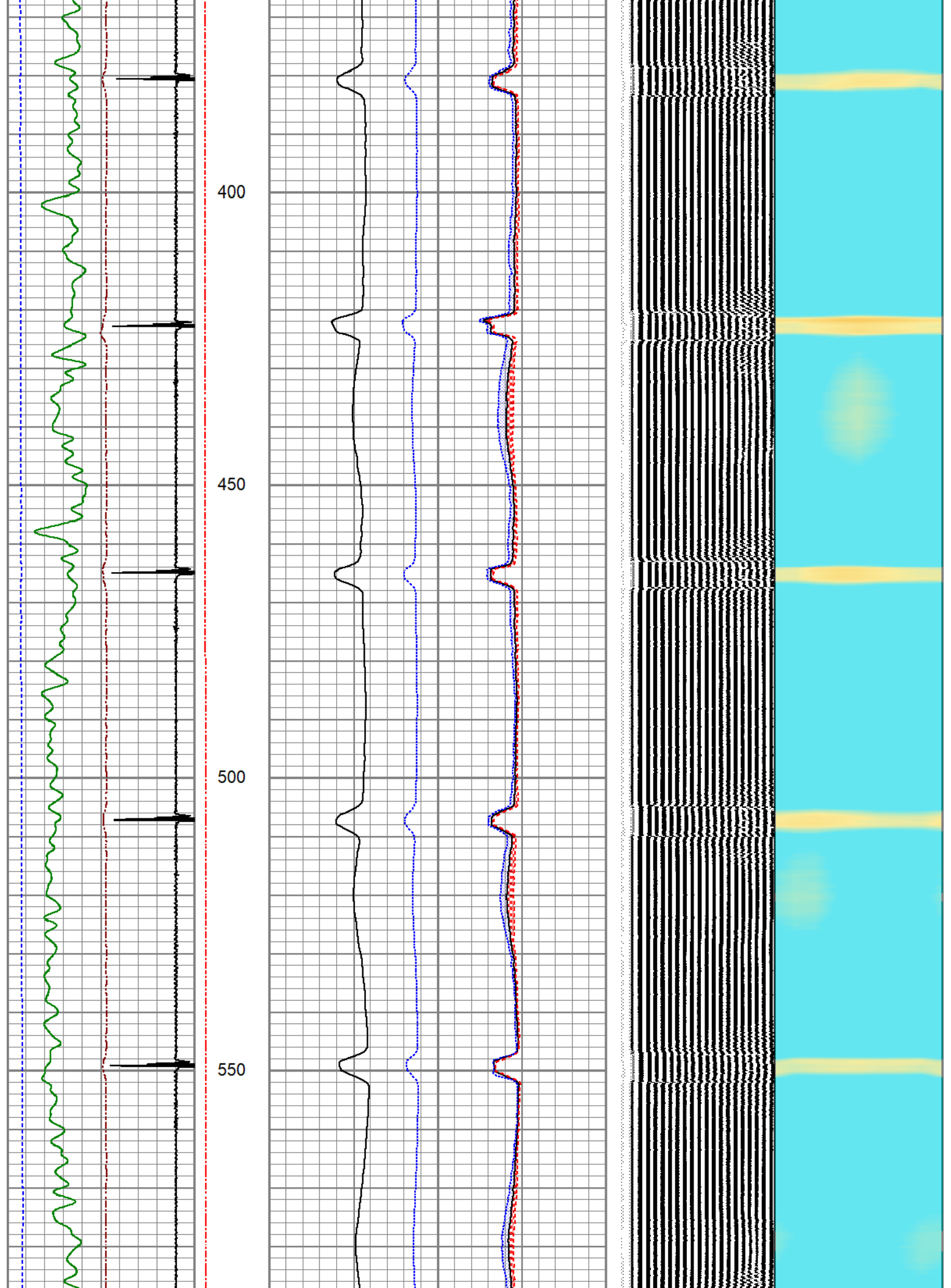
ZERO PSI APPLIED AT SURFACE

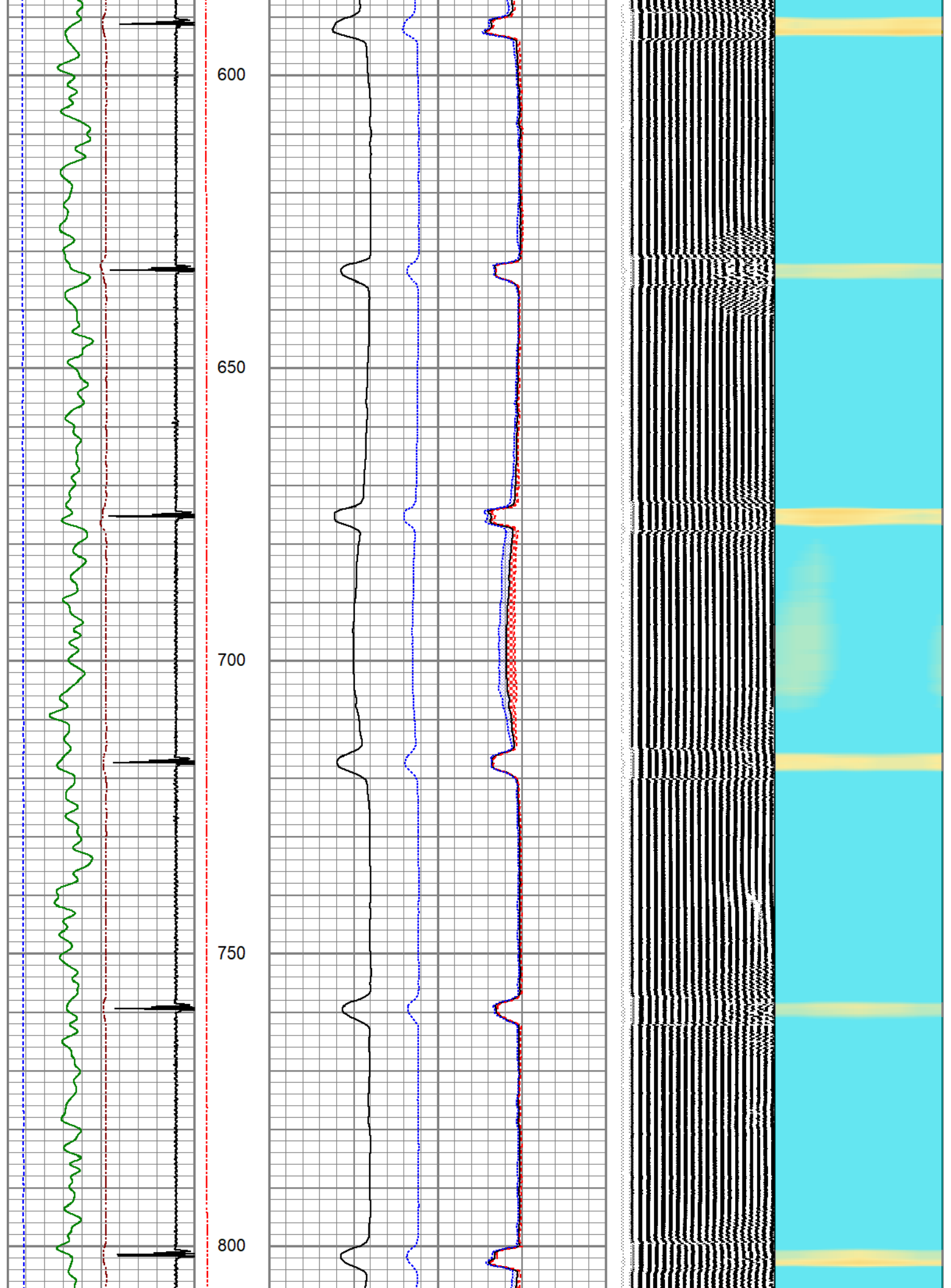
Database File	anadarko_weichel 15-14a_0512320338_20200212_scbl.db
Dataset Pathname	pass12
Presentation Format	pinr_scbl

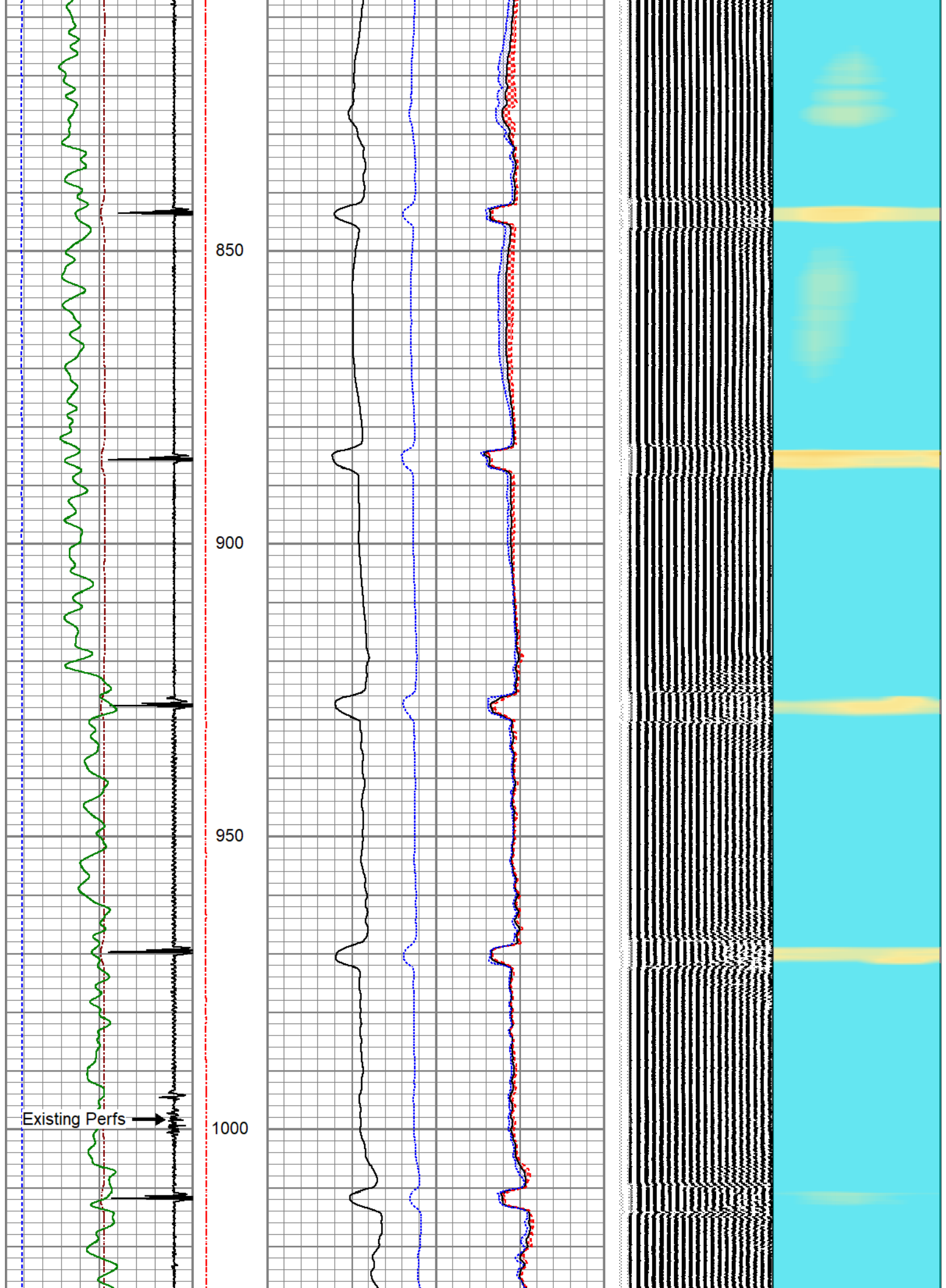
3Ft Travel Time			ineTensio	3' Amplitude		Sector		VDL		1	Sector Map	8
500	(usec)	0		(lb)	0	(mV)	100	Amplitude Average	200	(usec)	1200	
-9	Collar Locator	1		0	2000	3' Amplified Amplitude X 5		0	150			
Gamma Ray						Sector Amplitude Maximum						
0	(GAPI)	150		0	(mV)	20						
-100 LSPD (ft/min)		100		1	Bond Index	0	0	150				
					Sector Amplitude Minimum							
						0	150					

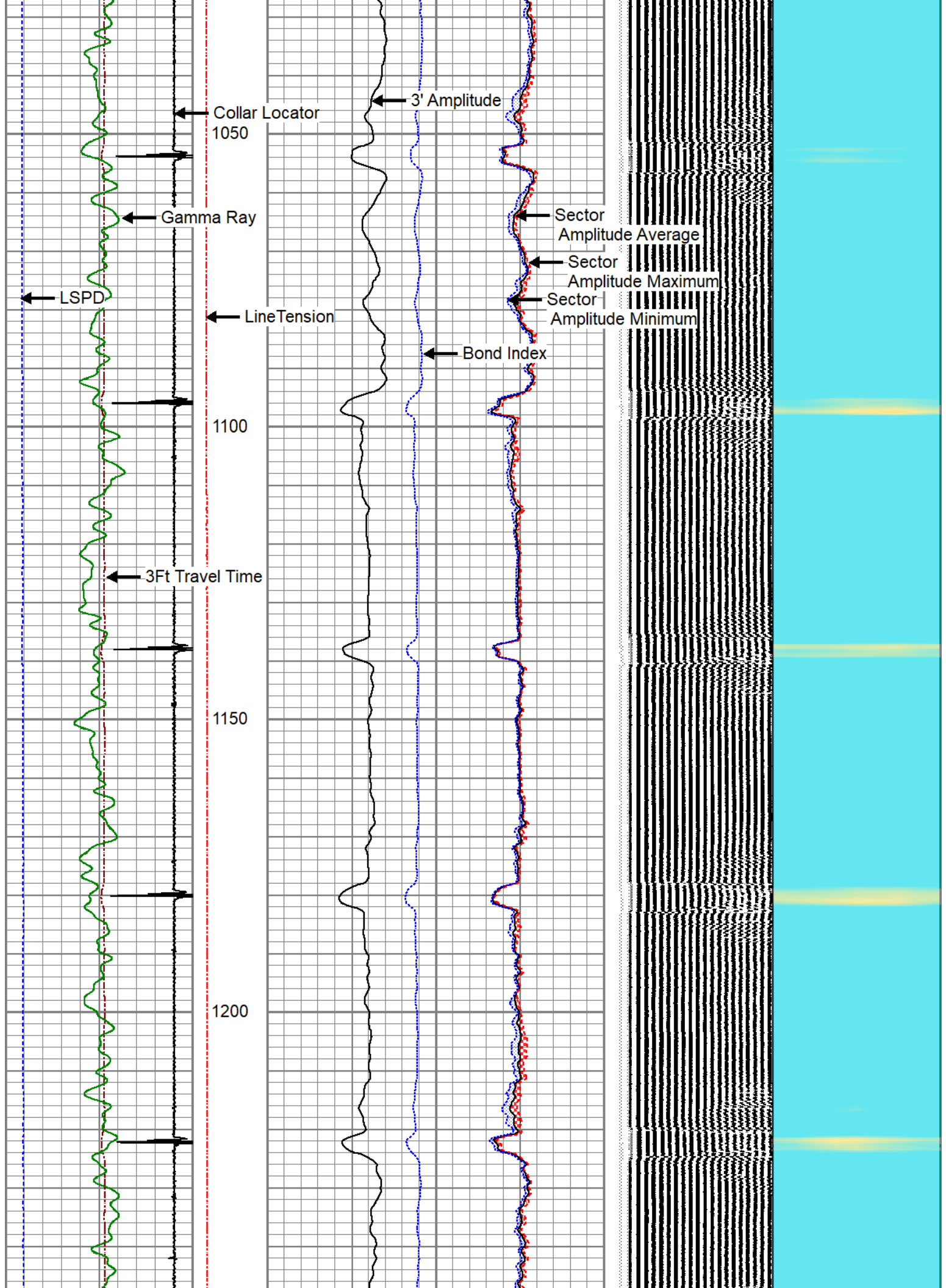


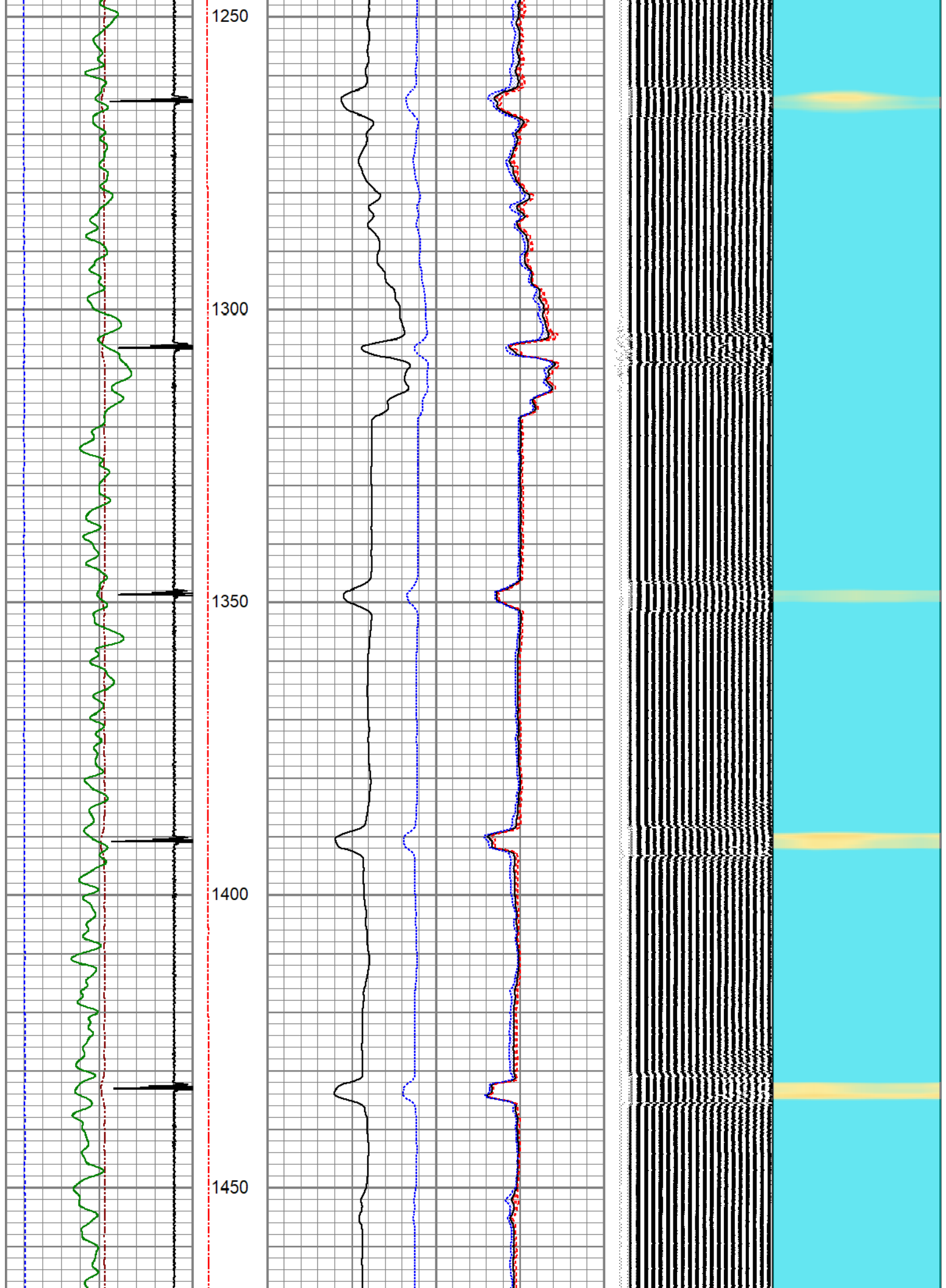


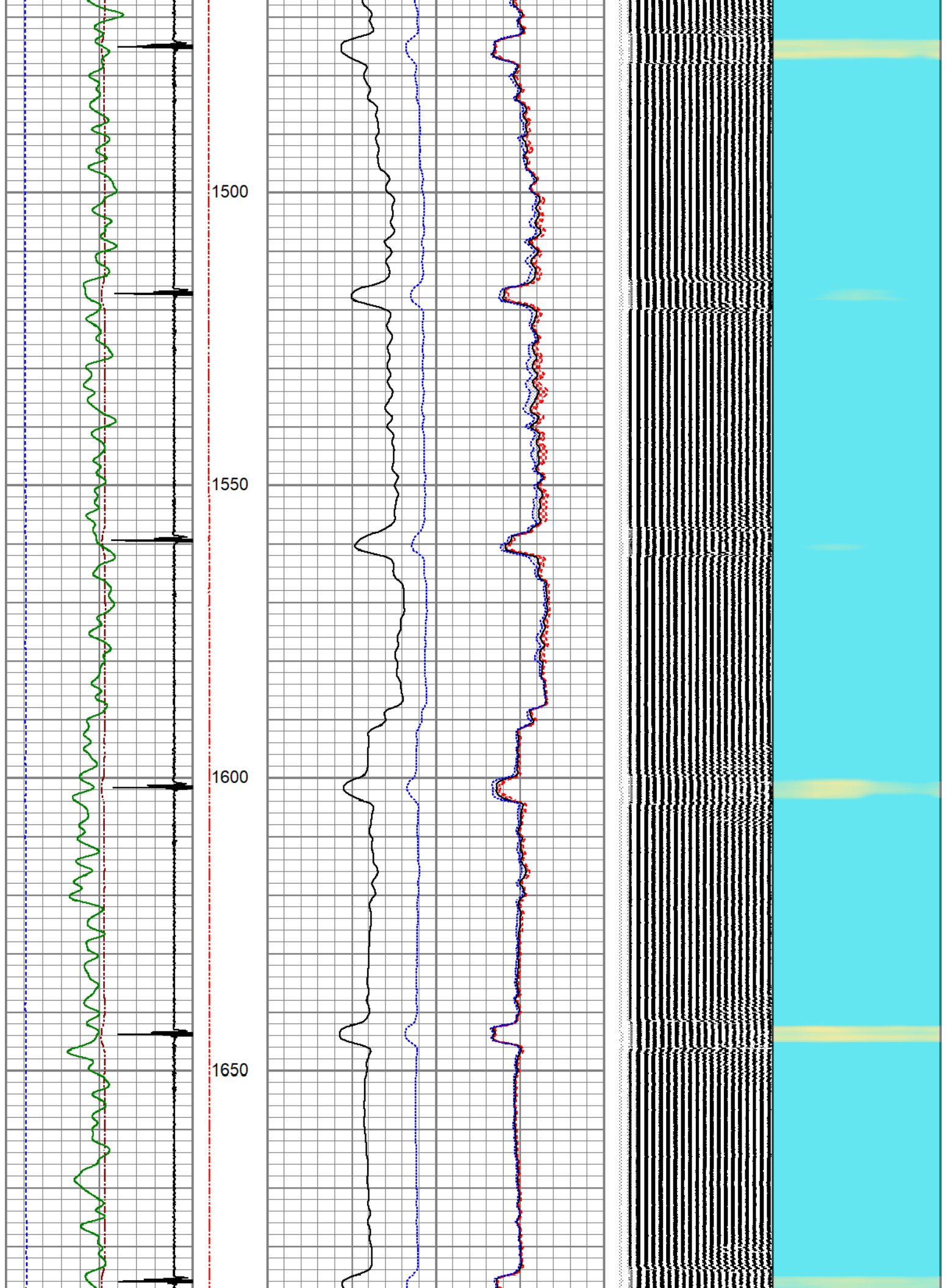




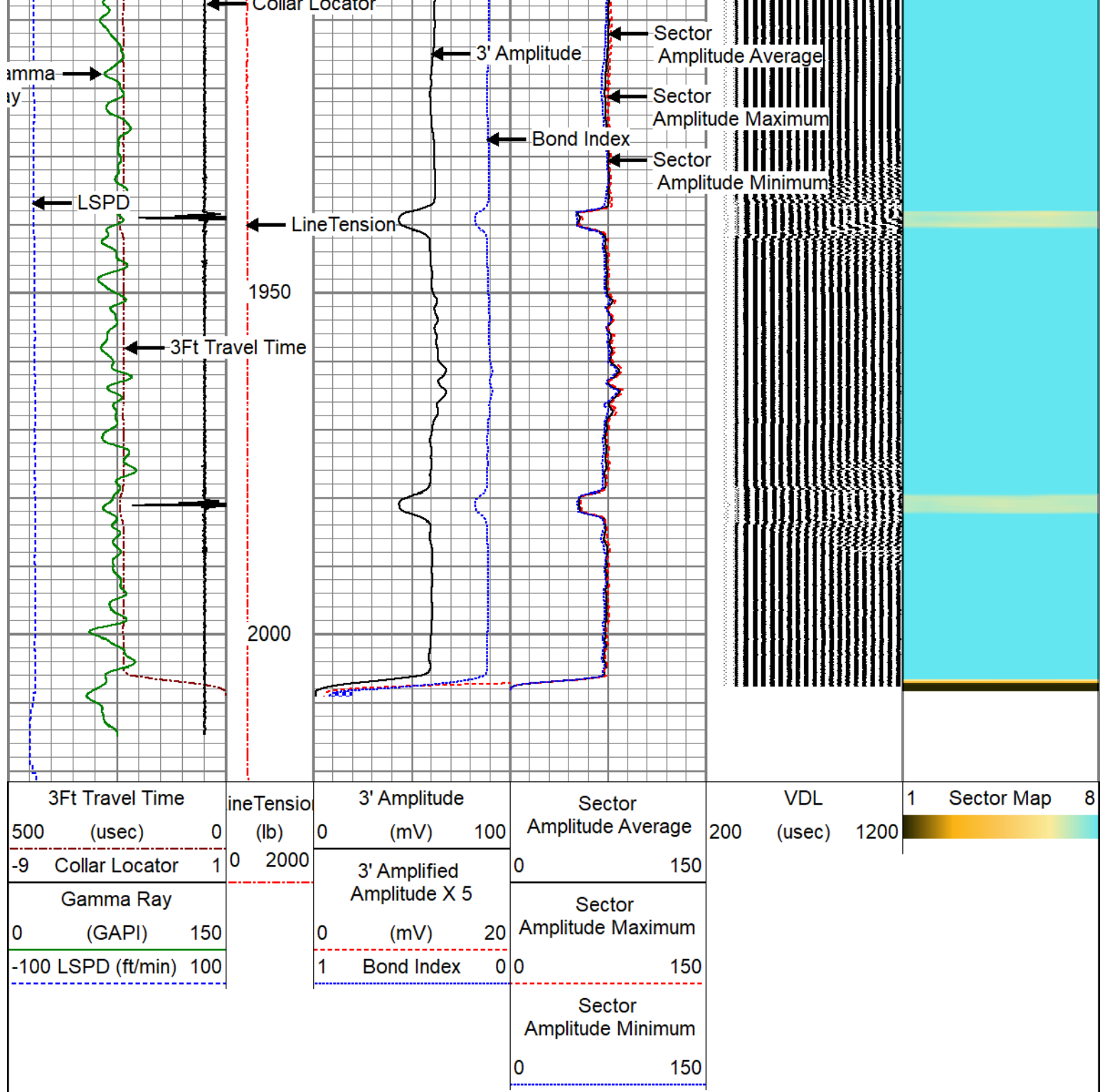















PIONEER
Pioneer Energy Services

REPEAT SECTION

ZERO PSI APPLIED AT SURFACE

Database File

Dataset Pathname

Presentation Format

Dataset Creation

Charted by

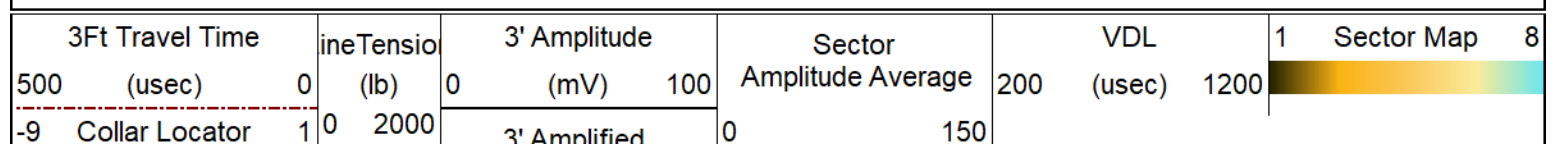
anadarko_weichel 15-14a_0512320338_20200212_scbl.db

pass10

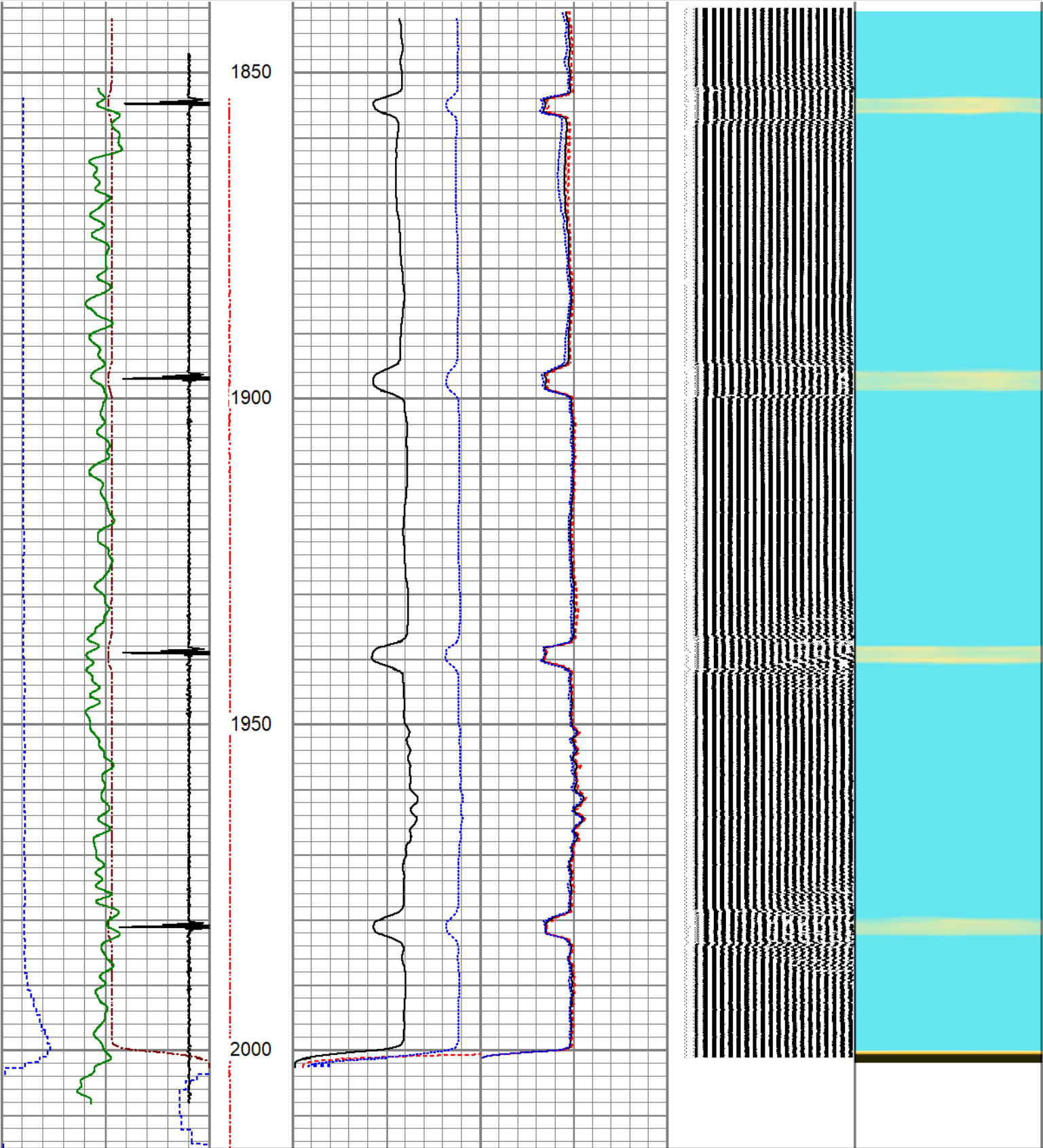
pinr_scbl

Wed Feb 12 10:13:45 2020

Depth in Feet scaled 1:240



Gamma Ray			Amplitude X 5			Sector		
0	(GAPI)	150	0	(mV)	20	Amplitude Maximum		
-100 LSPD (ft/min) 100			1	Bond Index	0	0	150	
						Sector		
						Amplitude Minimum		
						0	150	



3Ft Travel Time			Line Tension			3' Amplitude			Sector			VDL			Sector Map		
500	(usec)	0	0	(lb)	2000	0	(mV)	100	0	Amplitude Average	200	(usec)	1200	1		8	

-9	Collar Locator	1	0	2000	3' Amplified Amplitude X 5	0	150
0	Gamma Ray (GAPI)	150	0	(mV)	20	Sector Amplitude Maximum	
-100	LSPD (ft/min)	100	1	Bond Index	0	0	150
						Sector Amplitude Minimum	
						0	150

Calibration Report	
Database File	anadarko_weichel 15-14a_0512320338_20200212_scbl.db
Dataset Pathname	pass12
Dataset Creation	Wed Feb 12 10:17:03 2020

Gamma Ray Calibration Report		
Serial Number:	110246	
Tool Model:	GR/CCL-A	
Performed:	Mon Sep 09 12:21:39 2019	
Calibrator Value:	1.0	GAPI
Background Reading:	0.0	cps
Calibrator Reading:	1.0	cps
Sensitivity:	0.6660	GAPI/cps

Segmented Cement Bond Log Calibration Report		
Serial Number:	FW1401-41-T	
Tool Model:	RBL-DC	
Calibration Casing Diameter:	4.500	in
Calibration Depth:	1327.222	ft

Master Calibration, performed Wed Feb 12 10:08:36 2020:						
	Raw (v)		Calibrated (mv)		Results	
	Zero	Cal	Zero	Cal	Gain	Offset
3'	-0.001	1.222	1.000	81.196	65.590	1.042
CAL	-0.000	1.514				
5'	-0.001	1.330	1.000	81.196	60.271	1.035
SUM						
S1	-0.001	1.197	0.000	100.000	83.521	0.058
S2	-0.001	1.212	0.000	100.000	82.429	0.072
S3	-0.001	1.239	0.000	100.000	80.677	0.047
S4	-0.001	1.267	0.000	100.000	78.863	0.047
S5	-0.001	1.292	0.000	100.000	77.382	0.041
S6	-0.001	1.284	0.000	100.000	77.821	0.062
S7	-0.001	1.258	0.000	100.000	79.440	0.061
S8	-0.001	1.232	0.000	100.000	81.157	0.052

Air Zero Calibration, performed Thu Nov 29 15:24:07 2018:			
	Raw (v)		Results
	Zero	Zero	Offset
2'	0.000	0.000	0.000

S	0.000	0.000	0.000
5'	0.000	0.000	0.000
SUM			
S1	0.000	0.000	0.000
S2	0.000	0.000	0.000
S3	0.000	0.000	0.000
S4	0.000	0.000	0.000
S5	0.000	0.000	0.000
S6	0.000	0.000	0.000
S7	0.000	0.000	0.000
S8	0.000	0.000	0.000



Company	ANADARKO PETROLEUM CORP.
Well	WEICHEL 15-14A
Field	WATTENBERG
County	WELD
State	COLORADO