

Project: Garfield County, CO  
 Site: NPM G35 496 Pad  
 Well: BJU G35 FED 14B-35 496  
 Wellbore: Wellbore #1  
 Design: Design #1  
 Latitude: 39.660333  
 Longitude: -108.133988  
 Ground Level: 8164.0  
 RKB @ 8194.0usft (H&P#329)

FORMATION TOP DETAILS		
TVDPth	MDPath	Formation
2483.0	2571.2	Wasatch
5483.0	5710.3	Wasatch G
5795.0	6036.8	Fort Union
7804.0	8121.3	Ohio Creek
7804.0	8121.3	TOG
8050.0	8367.3	Williams Fork
10766.0	11084.3	Cameo
11367.0	11685.5	Rollins

REFERENCE INFORMATION	
Co-ordinate (N/E)	Reference: Well BJU G35 FED 14B-35 496 - Slot BJU G35 FED 14B-35 496, True North
Vertical (TVD)	Reference: RKB @ 8194.0usft (H&P#329)
Section (VS)	Reference: Slot - BJU G35 FED 14B-35 496(0.0N, 0.0E)
Measured Depth	Reference: RKB @ 8194.0usft (H&P#329)
	Calculation Method: Minimum Curvature

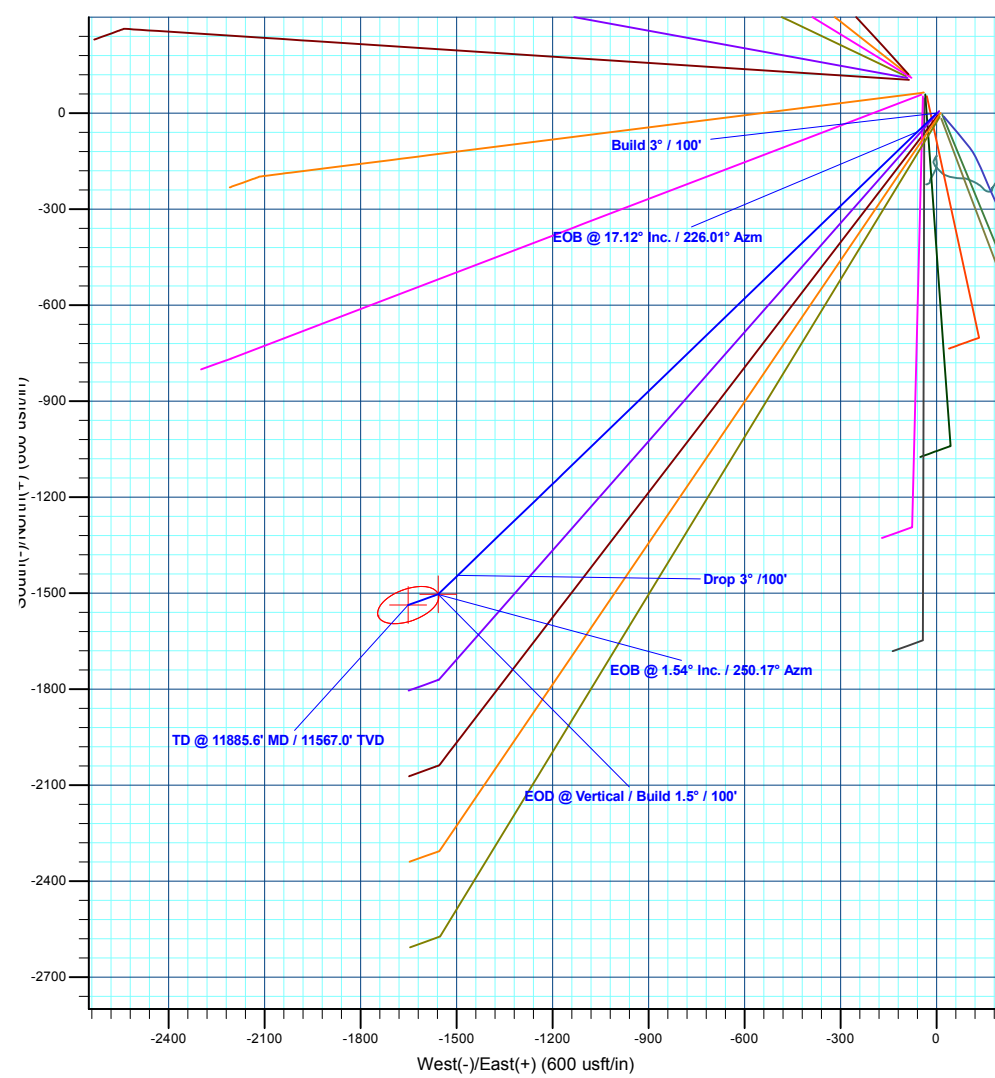
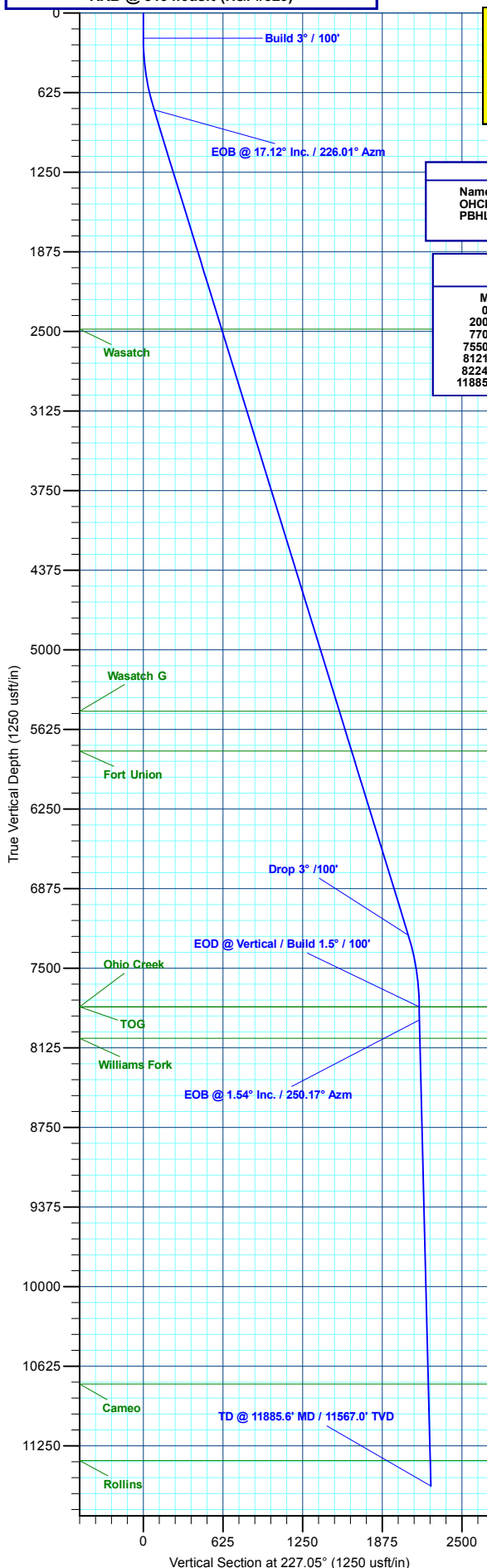
WELL DETAILS: BJU G35 FED 14B-35 496					
			8164.0		
+N/-S	+E/-W	Northing	Easting	Latitude	Longitude
0.0	0.0	14415246.40	2447092.80	39.660333	BJU-108.133988-14B-35 496

PROJECT DETAILS: Garfield County, CO	
Geodetic System:	Universal Transverse Mercator (US Survey Feet)
Datum:	NAD 1927 - Western US
Ellipsoid:	Clarke 1866
Zone:	Zone 12N (114 W to 108 W)
System Datum:	Mean Sea Level

**T M**  
 Azimuths to True North  
 Magnetic North: 9.48°  
 Magnetic Field  
 Strength: 51251.0nT  
 Dip Angle: 65.83°  
 Date: 12/11/2019  
 Model: HDGM\_FILE

DESIGN TARGET DETAILS							
Name	TVD	+N/-S	+E/-W	Northing	Easting	Latitude	Longitude
OHCR - BJ G35 14B-35 496	7804.0	-1503.5	-1557.7	14413693.88	2445583.95	39.656207	-108.139518
PBHL - BJ G35 14B-35 496	11567.0	-1537.4	-1651.6	14413657.00	2445491.10	39.656114	-108.139852

SECTION DETAILS										
MD	Inc	Azi	TVD	+N/-S	+E/-W	Dleg	TFace	VSect	Annotation	
0.0	0.00	0.00	0.0	0.0	0.0	0.00	0.00	0.0	Build 3° / 100'	
200.0	0.00	0.00	200.0	0.0	0.0	0.00	0.00	0.0	EOB @ 17.12° Inc. / 226.01° Azm	
770.6	17.12	226.01	762.2	-58.8	-60.9	3.00	226.01	84.6	Drop 3° / 100'	
7550.7	17.12	226.01	7241.8	-1444.8	-1496.8	0.00	0.00	2080.0	EOD @ Vertical / Build 1.5° / 100'	
8121.3	0.00	0.00	7804.0	-1503.5	-1557.7	3.00	180.00	2164.6	EOB @ 1.54° Inc. / 250.17° Azm	
8224.1	1.54	250.17	7906.8	-1504.0	-1559.0	1.50	250.17	2165.9	TD @ 11885.6' MD / 11567.0' TVD	
11885.6	1.54	250.17	11567.0	-1537.4	-1651.6	0.00	0.00	2256.5		



**Plan: Design #1 (BJU G35 FED 14B-35 496/Wellbore #1)**  
 Created By: Will Jircik Date: 16:06, December 18 2019



## **Caerus Oil & Gas**

**Garfield County, CO**

**NPM G35 496 Pad**

**BJU G35 FED 14B-35 496 - Slot BJU G35 FED 14B-35 496**

**Wellbore #1**

**Plan: Design #1**

## **QES Well Planning Report**

**18 December, 2019**



<b>Database:</b>	EDM 5000.1 Single User Db	<b>Local Co-ordinate Reference:</b>	Well BJU G35 FED 14B-35 496 - Slot BJU G35 FED 14B-35 496
<b>Company:</b>	Caerus Oil & Gas	<b>TVD Reference:</b>	RKB @ 8194.0usft (H&P#329)
<b>Project:</b>	Garfield County, CO	<b>MD Reference:</b>	RKB @ 8194.0usft (H&P#329)
<b>Site:</b>	NPM G35 496 Pad	<b>North Reference:</b>	True
<b>Well:</b>	BJU G35 FED 14B-35 496	<b>Survey Calculation Method:</b>	Minimum Curvature
<b>Wellbore:</b>	Wellbore #1		
<b>Design:</b>	Design #1		

<b>Project</b>	Garfield County, CO		
<b>Map System:</b>	Universal Transverse Mercator (US Survey Fee	<b>System Datum:</b>	Mean Sea Level
<b>Geo Datum:</b>	NAD 1927 - Western US		
<b>Map Zone:</b>	Zone 12N (114 W to 108 W)		

<b>Site</b>	NPM G35 496 Pad				
<b>Site Position:</b>		<b>Northing:</b>	14,415,354.00 usft	<b>Latitude:</b>	39.660635
<b>From:</b>	Map	<b>Easting:</b>	2,447,010.80 usft	<b>Longitude:</b>	-108.134267
<b>Position Uncertainty:</b>	0.0 usft	<b>Slot Radius:</b>	13-3/16 "	<b>Grid Convergence:</b>	1.83 °

<b>Well</b>	BJU G35 FED 14B-35 496 - Slot BJU G35 FED 14B-35 496					
<b>Well Position</b>	<b>+N/-S</b>	-110.2 usft	<b>Northing:</b>	14,415,246.40 usft	<b>Latitude:</b>	39.660333
	<b>+E/-W</b>	78.5 usft	<b>Easting:</b>	2,447,092.80 usft	<b>Longitude:</b>	-108.133988
<b>Position Uncertainty</b>		0.0 usft	<b>Wellhead Elevation:</b>		<b>Ground Level:</b>	8,164.0 usft

<b>Wellbore</b>	Wellbore #1				
<b>Magnetics</b>	<b>Model Name</b>	<b>Sample Date</b>	<b>Declination (°)</b>	<b>Dip Angle (°)</b>	<b>Field Strength (nT)</b>
	HDGM_FILE	12/11/2019	9.48	65.83	51,251.00000000

<b>Design</b>	Design #1			
<b>Audit Notes:</b>				
<b>Version:</b>	<b>Phase:</b>	PLAN	<b>Tie On Depth:</b>	0.0
<b>Vertical Section:</b>	<b>Depth From (TVD) (usft)</b>	<b>+N/-S (usft)</b>	<b>+E/-W (usft)</b>	<b>Direction (°)</b>
	0.0	0.0	0.0	227.05

<b>Plan Sections</b>											
Measured Depth (usft)	Inclination (°)	Azimuth (°)	Vertical Depth (usft)	+N/-S (usft)	+E/-W (usft)	Dogleg Rate (°/100usft)	Build Rate (°/100usft)	Turn Rate (°/100usft)	TFO (°)	Target	
0.0	0.00	0.00	0.0	0.0	0.0	0.00	0.00	0.00	0.00		
200.0	0.00	0.00	200.0	0.0	0.0	0.00	0.00	0.00	0.00		
770.6	17.12	226.01	762.2	-58.8	-60.9	3.00	3.00	0.00	226.01		
7,550.7	17.12	226.01	7,241.8	-1,444.8	-1,496.8	0.00	0.00	0.00	0.00		
8,121.3	0.00	0.00	7,804.0	-1,503.5	-1,557.7	3.00	-3.00	0.00	180.00	OHCR - BJ G35 14	
8,224.1	1.54	250.17	7,906.8	-1,504.0	-1,559.0	1.50	1.50	-106.85	250.17		
11,885.6	1.54	250.17	11,567.0	-1,537.4	-1,651.6	0.00	0.00	0.00	0.00	PBHL - BJ G35 14I	

<b>Database:</b>	EDM 5000.1 Single User Db	<b>Local Co-ordinate Reference:</b>	Well BJU G35 FED 14B-35 496 - Slot BJU G35 FED 14B-35 496
<b>Company:</b>	Caerus Oil & Gas	<b>TVD Reference:</b>	RKB @ 8194.0usft (H&P#329)
<b>Project:</b>	Garfield County, CO	<b>MD Reference:</b>	RKB @ 8194.0usft (H&P#329)
<b>Site:</b>	NPM G35 496 Pad	<b>North Reference:</b>	True
<b>Well:</b>	BJU G35 FED 14B-35 496	<b>Survey Calculation Method:</b>	Minimum Curvature
<b>Wellbore:</b>	Wellbore #1		
<b>Design:</b>	Design #1		

Planned Survey										
Measured Depth (usft)	Inclination (°)	Azimuth (°)	Vertical Depth (usft)	+N/-S (usft)	+E/-W (usft)	Vertical Section (usft)	Dogleg Rate (°/100usft)	Build Rate (°/100usft)	Turn Rate (°/100usft)	
0.0	0.00	0.00	0.0	0.0	0.0	0.0	0.00	0.00	0.00	
100.0	0.00	0.00	100.0	0.0	0.0	0.0	0.00	0.00	0.00	
<b>Build 3° / 100'</b>										
200.0	0.00	0.00	200.0	0.0	0.0	0.0	0.00	0.00	0.00	
300.0	3.00	226.01	300.0	-1.8	-1.9	2.6	3.00	3.00	0.00	
400.0	6.00	226.01	399.6	-7.3	-7.5	10.5	3.00	3.00	0.00	
500.0	9.00	226.01	498.8	-16.3	-16.9	23.5	3.00	3.00	0.00	
600.0	12.00	226.01	597.1	-29.0	-30.0	41.7	3.00	3.00	0.00	
700.0	15.00	226.01	694.3	-45.2	-46.8	65.1	3.00	3.00	0.00	
<b>EOB @ 17.12° Inc. / 226.01° Azm</b>										
770.6	17.12	226.01	762.2	-58.8	-60.9	84.6	3.00	3.00	0.00	
800.0	17.12	226.01	790.2	-64.8	-67.1	93.2	0.00	0.00	0.00	
900.0	17.12	226.01	885.8	-85.2	-88.3	122.7	0.00	0.00	0.00	
1,000.0	17.12	226.01	981.4	-105.7	-109.5	152.1	0.00	0.00	0.00	
1,100.0	17.12	226.01	1,077.0	-126.1	-130.6	181.5	0.00	0.00	0.00	
1,200.0	17.12	226.01	1,172.5	-146.5	-151.8	211.0	0.00	0.00	0.00	
1,300.0	17.12	226.01	1,268.1	-167.0	-173.0	240.4	0.00	0.00	0.00	
1,400.0	17.12	226.01	1,363.7	-187.4	-194.2	269.8	0.00	0.00	0.00	
1,500.0	17.12	226.01	1,459.2	-207.9	-215.3	299.3	0.00	0.00	0.00	
1,600.0	17.12	226.01	1,554.8	-228.3	-236.5	328.7	0.00	0.00	0.00	
1,700.0	17.12	226.01	1,650.4	-248.8	-257.7	358.1	0.00	0.00	0.00	
1,800.0	17.12	226.01	1,745.9	-269.2	-278.9	387.5	0.00	0.00	0.00	
1,900.0	17.12	226.01	1,841.5	-289.6	-300.1	417.0	0.00	0.00	0.00	
2,000.0	17.12	226.01	1,937.1	-310.1	-321.2	446.4	0.00	0.00	0.00	
2,100.0	17.12	226.01	2,032.7	-330.5	-342.4	475.8	0.00	0.00	0.00	
2,200.0	17.12	226.01	2,128.2	-351.0	-363.6	505.3	0.00	0.00	0.00	
2,300.0	17.12	226.01	2,223.8	-371.4	-384.8	534.7	0.00	0.00	0.00	
2,400.0	17.12	226.01	2,319.4	-391.8	-406.0	564.1	0.00	0.00	0.00	
2,500.0	17.12	226.01	2,414.9	-412.3	-427.1	593.6	0.00	0.00	0.00	
<b>Wasatch</b>										
2,571.2	17.12	226.01	2,483.0	-426.9	-442.2	614.5	0.00	0.00	0.00	
2,600.0	17.12	226.01	2,510.5	-432.7	-448.3	623.0	0.00	0.00	0.00	
2,700.0	17.12	226.01	2,606.1	-453.2	-469.5	652.4	0.00	0.00	0.00	
2,800.0	17.12	226.01	2,701.6	-473.6	-490.7	681.9	0.00	0.00	0.00	
2,900.0	17.12	226.01	2,797.2	-494.1	-511.8	711.3	0.00	0.00	0.00	
3,000.0	17.12	226.01	2,892.8	-514.5	-533.0	740.7	0.00	0.00	0.00	
3,100.0	17.12	226.01	2,988.4	-534.9	-554.2	770.1	0.00	0.00	0.00	
3,200.0	17.12	226.01	3,083.9	-555.4	-575.4	799.6	0.00	0.00	0.00	
3,300.0	17.12	226.01	3,179.5	-575.8	-596.6	829.0	0.00	0.00	0.00	
3,400.0	17.12	226.01	3,275.1	-596.3	-617.7	858.4	0.00	0.00	0.00	
3,500.0	17.12	226.01	3,370.6	-616.7	-638.9	887.9	0.00	0.00	0.00	
3,600.0	17.12	226.01	3,466.2	-637.2	-660.1	917.3	0.00	0.00	0.00	
3,700.0	17.12	226.01	3,561.8	-657.6	-681.3	946.7	0.00	0.00	0.00	
3,800.0	17.12	226.01	3,657.3	-678.0	-702.5	976.2	0.00	0.00	0.00	
3,900.0	17.12	226.01	3,752.9	-698.5	-723.6	1,005.6	0.00	0.00	0.00	
4,000.0	17.12	226.01	3,848.5	-718.9	-744.8	1,035.0	0.00	0.00	0.00	
4,100.0	17.12	226.01	3,944.0	-739.4	-766.0	1,064.4	0.00	0.00	0.00	
4,200.0	17.12	226.01	4,039.6	-759.8	-787.2	1,093.9	0.00	0.00	0.00	
4,300.0	17.12	226.01	4,135.2	-780.3	-808.3	1,123.3	0.00	0.00	0.00	
4,400.0	17.12	226.01	4,230.8	-800.7	-829.5	1,152.7	0.00	0.00	0.00	
4,500.0	17.12	226.01	4,326.3	-821.1	-850.7	1,182.2	0.00	0.00	0.00	
4,600.0	17.12	226.01	4,421.9	-841.6	-871.9	1,211.6	0.00	0.00	0.00	
4,700.0	17.12	226.01	4,517.5	-862.0	-893.1	1,241.0	0.00	0.00	0.00	

<b>Database:</b>	EDM 5000.1 Single User Db	<b>Local Co-ordinate Reference:</b>	Well BJU G35 FED 14B-35 496 - Slot BJU G35 FED 14B-35 496
<b>Company:</b>	Caerus Oil & Gas	<b>TVD Reference:</b>	RKB @ 8194.0usft (H&P#329)
<b>Project:</b>	Garfield County, CO	<b>MD Reference:</b>	RKB @ 8194.0usft (H&P#329)
<b>Site:</b>	NPM G35 496 Pad	<b>North Reference:</b>	True
<b>Well:</b>	BJU G35 FED 14B-35 496	<b>Survey Calculation Method:</b>	Minimum Curvature
<b>Wellbore:</b>	Wellbore #1		
<b>Design:</b>	Design #1		

**Planned Survey**

Measured Depth (usft)	Inclination (°)	Azimuth (°)	Vertical Depth (usft)	+N/-S (usft)	+E/-W (usft)	Vertical Section (usft)	Dogleg Rate (°/100usft)	Build Rate (°/100usft)	Turn Rate (°/100usft)
4,800.0	17.12	226.01	4,613.0	-882.5	-914.2	1,270.5	0.00	0.00	0.00
4,900.0	17.12	226.01	4,708.6	-902.9	-935.4	1,299.9	0.00	0.00	0.00
5,000.0	17.12	226.01	4,804.2	-923.4	-956.6	1,329.3	0.00	0.00	0.00
5,100.0	17.12	226.01	4,899.7	-943.8	-977.8	1,358.7	0.00	0.00	0.00
5,200.0	17.12	226.01	4,995.3	-964.2	-999.0	1,388.2	0.00	0.00	0.00
5,300.0	17.12	226.01	5,090.9	-984.7	-1,020.1	1,417.6	0.00	0.00	0.00
5,400.0	17.12	226.01	5,186.5	-1,005.1	-1,041.3	1,447.0	0.00	0.00	0.00
5,500.0	17.12	226.01	5,282.0	-1,025.6	-1,062.5	1,476.5	0.00	0.00	0.00
5,600.0	17.12	226.01	5,377.6	-1,046.0	-1,083.7	1,505.9	0.00	0.00	0.00
5,700.0	17.12	226.01	5,473.2	-1,066.5	-1,104.8	1,535.3	0.00	0.00	0.00
<b>Wasatch G</b>									
5,710.3	17.12	226.01	5,483.0	-1,068.6	-1,107.0	1,538.4	0.00	0.00	0.00
5,800.0	17.12	226.01	5,568.7	-1,086.9	-1,126.0	1,564.8	0.00	0.00	0.00
5,900.0	17.12	226.01	5,664.3	-1,107.3	-1,147.2	1,594.2	0.00	0.00	0.00
6,000.0	17.12	226.01	5,759.9	-1,127.8	-1,168.4	1,623.6	0.00	0.00	0.00
<b>Fort Union</b>									
6,036.8	17.12	226.01	5,795.0	-1,135.3	-1,176.2	1,634.4	0.00	0.00	0.00
6,100.0	17.12	226.01	5,855.4	-1,148.2	-1,189.6	1,653.0	0.00	0.00	0.00
6,200.0	17.12	226.01	5,951.0	-1,168.7	-1,210.7	1,682.5	0.00	0.00	0.00
6,300.0	17.12	226.01	6,046.6	-1,189.1	-1,231.9	1,711.9	0.00	0.00	0.00
6,400.0	17.12	226.01	6,142.2	-1,209.6	-1,253.1	1,741.3	0.00	0.00	0.00
6,500.0	17.12	226.01	6,237.7	-1,230.0	-1,274.3	1,770.8	0.00	0.00	0.00
6,600.0	17.12	226.01	6,333.3	-1,250.4	-1,295.5	1,800.2	0.00	0.00	0.00
6,700.0	17.12	226.01	6,428.9	-1,270.9	-1,316.6	1,829.6	0.00	0.00	0.00
6,800.0	17.12	226.01	6,524.4	-1,291.3	-1,337.8	1,859.1	0.00	0.00	0.00
6,900.0	17.12	226.01	6,620.0	-1,311.8	-1,359.0	1,888.5	0.00	0.00	0.00
7,000.0	17.12	226.01	6,715.6	-1,332.2	-1,380.2	1,917.9	0.00	0.00	0.00
7,100.0	17.12	226.01	6,811.1	-1,352.7	-1,401.3	1,947.4	0.00	0.00	0.00
7,200.0	17.12	226.01	6,906.7	-1,373.1	-1,422.5	1,976.8	0.00	0.00	0.00
7,300.0	17.12	226.01	7,002.3	-1,393.5	-1,443.7	2,006.2	0.00	0.00	0.00
7,400.0	17.12	226.01	7,097.8	-1,414.0	-1,464.9	2,035.6	0.00	0.00	0.00
7,500.0	17.12	226.01	7,193.4	-1,434.4	-1,486.1	2,065.1	0.00	0.00	0.00
<b>Drop 3° / 100'</b>									
7,550.7	17.12	226.01	7,241.8	-1,444.8	-1,496.8	2,080.0	0.00	0.00	0.00
7,600.0	15.64	226.01	7,289.2	-1,454.4	-1,506.8	2,093.9	3.00	-3.00	0.00
7,700.0	12.64	226.01	7,386.1	-1,471.4	-1,524.4	2,118.3	3.00	-3.00	0.00
7,800.0	9.64	226.01	7,484.2	-1,484.8	-1,538.3	2,137.6	3.00	-3.00	0.00
7,900.0	6.64	226.01	7,583.2	-1,494.6	-1,548.5	2,151.8	3.00	-3.00	0.00
8,000.0	3.64	226.01	7,682.8	-1,500.9	-1,554.9	2,160.7	3.00	-3.00	0.00
8,100.0	0.64	226.01	7,782.7	-1,503.5	-1,557.6	2,164.5	3.00	-3.00	0.00
<b>EOD @ Vertical / Build 1.5° / 100' - Ohio Creek - TOG</b>									
8,121.3	0.00	0.00	7,804.0	-1,503.5	-1,557.7	2,164.6	3.00	-3.00	0.00
8,200.0	1.18	250.17	7,882.7	-1,503.8	-1,558.4	2,165.3	1.50	1.50	0.00
<b>EOB @ 1.54° Inc. / 250.17° Azm</b>									
8,224.1	1.54	250.17	7,906.8	-1,504.0	-1,559.0	2,165.9	1.50	1.50	0.00
8,300.0	1.54	250.17	7,982.7	-1,504.7	-1,560.9	2,167.7	0.00	0.00	0.00
<b>Williams Fork</b>									
8,367.3	1.54	250.17	8,050.0	-1,505.3	-1,562.6	2,169.4	0.00	0.00	0.00
8,400.0	1.54	250.17	8,082.6	-1,505.6	-1,563.4	2,170.2	0.00	0.00	0.00
8,500.0	1.54	250.17	8,182.6	-1,506.5	-1,565.9	2,172.7	0.00	0.00	0.00
8,600.0	1.54	250.17	8,282.6	-1,507.4	-1,568.5	2,175.2	0.00	0.00	0.00
8,700.0	1.54	250.17	8,382.5	-1,508.4	-1,571.0	2,177.6	0.00	0.00	0.00

<b>Database:</b>	EDM 5000.1 Single User Db	<b>Local Co-ordinate Reference:</b>	Well BJU G35 FED 14B-35 496 - Slot BJU G35 FED 14B-35 496
<b>Company:</b>	Caerus Oil & Gas	<b>TVD Reference:</b>	RKB @ 8194.0usft (H&P#329)
<b>Project:</b>	Garfield County, CO	<b>MD Reference:</b>	RKB @ 8194.0usft (H&P#329)
<b>Site:</b>	NPM G35 496 Pad	<b>North Reference:</b>	True
<b>Well:</b>	BJU G35 FED 14B-35 496	<b>Survey Calculation Method:</b>	Minimum Curvature
<b>Wellbore:</b>	Wellbore #1		
<b>Design:</b>	Design #1		

Planned Survey										
Measured Depth (usft)	Inclination (°)	Azimuth (°)	Vertical Depth (usft)	+N/-S (usft)	+E/-W (usft)	Vertical Section (usft)	Dogleg Rate (°/100usft)	Build Rate (°/100usft)	Turn Rate (°/100usft)	
8,800.0	1.54	250.17	8,482.5	-1,509.3	-1,573.5	2,180.1	0.00	0.00	0.00	
8,900.0	1.54	250.17	8,582.5	-1,510.2	-1,576.1	2,182.6	0.00	0.00	0.00	
9,000.0	1.54	250.17	8,682.4	-1,511.1	-1,578.6	2,185.1	0.00	0.00	0.00	
9,100.0	1.54	250.17	8,782.4	-1,512.0	-1,581.1	2,187.5	0.00	0.00	0.00	
9,200.0	1.54	250.17	8,882.4	-1,512.9	-1,583.7	2,190.0	0.00	0.00	0.00	
9,300.0	1.54	250.17	8,982.3	-1,513.8	-1,586.2	2,192.5	0.00	0.00	0.00	
9,400.0	1.54	250.17	9,082.3	-1,514.7	-1,588.7	2,195.0	0.00	0.00	0.00	
9,500.0	1.54	250.17	9,182.2	-1,515.7	-1,591.3	2,197.4	0.00	0.00	0.00	
9,600.0	1.54	250.17	9,282.2	-1,516.6	-1,593.8	2,199.9	0.00	0.00	0.00	
9,700.0	1.54	250.17	9,382.2	-1,517.5	-1,596.3	2,202.4	0.00	0.00	0.00	
9,800.0	1.54	250.17	9,482.1	-1,518.4	-1,598.9	2,204.9	0.00	0.00	0.00	
9,900.0	1.54	250.17	9,582.1	-1,519.3	-1,601.4	2,207.3	0.00	0.00	0.00	
10,000.0	1.54	250.17	9,682.1	-1,520.2	-1,603.9	2,209.8	0.00	0.00	0.00	
10,100.0	1.54	250.17	9,782.0	-1,521.1	-1,606.4	2,212.3	0.00	0.00	0.00	
10,200.0	1.54	250.17	9,882.0	-1,522.0	-1,609.0	2,214.8	0.00	0.00	0.00	
10,300.0	1.54	250.17	9,982.0	-1,523.0	-1,611.5	2,217.2	0.00	0.00	0.00	
10,400.0	1.54	250.17	10,081.9	-1,523.9	-1,614.0	2,219.7	0.00	0.00	0.00	
10,500.0	1.54	250.17	10,181.9	-1,524.8	-1,616.6	2,222.2	0.00	0.00	0.00	
10,600.0	1.54	250.17	10,281.8	-1,525.7	-1,619.1	2,224.6	0.00	0.00	0.00	
10,700.0	1.54	250.17	10,381.8	-1,526.6	-1,621.6	2,227.1	0.00	0.00	0.00	
10,800.0	1.54	250.17	10,481.8	-1,527.5	-1,624.2	2,229.6	0.00	0.00	0.00	
10,900.0	1.54	250.17	10,581.7	-1,528.4	-1,626.7	2,232.1	0.00	0.00	0.00	
11,000.0	1.54	250.17	10,681.7	-1,529.3	-1,629.2	2,234.5	0.00	0.00	0.00	
<b>Cameo</b>										
11,084.3	1.54	250.17	10,766.0	-1,530.1	-1,631.4	2,236.6	0.00	0.00	0.00	
11,100.0	1.54	250.17	10,781.7	-1,530.3	-1,631.8	2,237.0	0.00	0.00	0.00	
11,200.0	1.54	250.17	10,881.6	-1,531.2	-1,634.3	2,239.5	0.00	0.00	0.00	
11,300.0	1.54	250.17	10,981.6	-1,532.1	-1,636.8	2,242.0	0.00	0.00	0.00	
11,400.0	1.54	250.17	11,081.6	-1,533.0	-1,639.4	2,244.4	0.00	0.00	0.00	
11,500.0	1.54	250.17	11,181.5	-1,533.9	-1,641.9	2,246.9	0.00	0.00	0.00	
11,600.0	1.54	250.17	11,281.5	-1,534.8	-1,644.4	2,249.4	0.00	0.00	0.00	
<b>Rollins</b>										
11,685.5	1.54	250.17	11,367.0	-1,535.6	-1,646.6	2,251.5	0.00	0.00	0.00	
11,700.0	1.54	250.17	11,381.5	-1,535.7	-1,646.9	2,251.9	0.00	0.00	0.00	
11,800.0	1.54	250.17	11,481.4	-1,536.7	-1,649.5	2,254.3	0.00	0.00	0.00	
<b>TD @ 11885.6' MD / 11567.0' TVD</b>										
11,885.6	1.54	250.17	11,567.0	-1,537.4	-1,651.6	2,256.5	0.00	0.00	0.00	

Design Targets										
Target Name	Dip Angle (°)	Dip Dir. (°)	TVD (usft)	+N/-S (usft)	+E/-W (usft)	Northing (usft)	Easting (usft)	Latitude	Longitude	
OHCR - BJ G35 14B- - hit/miss target - Shape - Point	0.00	0.00	7,804.0	-1,503.5	-1,557.7	14,413,693.88	2,445,583.95	39.656207	-108.139518	
PBHL - BJ G35 14B- - plan hits target center - Ellipse (radii L100.0 W50.0 on 250.00 azi)	0.00	0.00	11,567.0	-1,537.4	-1,651.6	14,413,657.00	2,445,491.10	39.656114	-108.139852	

<b>Database:</b>	EDM 5000.1 Single User Db	<b>Local Co-ordinate Reference:</b>	Well BJU G35 FED 14B-35 496 - Slot BJU G35 FED 14B-35 496
<b>Company:</b>	Caerus Oil & Gas	<b>TVD Reference:</b>	RKB @ 8194.0usft (H&P#329)
<b>Project:</b>	Garfield County, CO	<b>MD Reference:</b>	RKB @ 8194.0usft (H&P#329)
<b>Site:</b>	NPM G35 496 Pad	<b>North Reference:</b>	True
<b>Well:</b>	BJU G35 FED 14B-35 496	<b>Survey Calculation Method:</b>	Minimum Curvature
<b>Wellbore:</b>	Wellbore #1		
<b>Design:</b>	Design #1		

Formations						
Measured Depth (usft)	Vertical Depth (usft)	Name	Lithology	Dip (°)	Dip Direction (°)	
2,571.2	2,483.0	Wasatch				
5,710.3	5,483.0	Wasatch G				
6,036.8	5,795.0	Fort Union				
8,121.3	7,804.0	Ohio Creek				
8,121.3	7,804.0	TOG				
8,367.3	8,050.0	Williams Fork				
11,084.3	10,766.0	Cameo				
11,685.5	11,367.0	Rollins				

Plan Annotations					
Measured Depth (usft)	Vertical Depth (usft)	Local Coordinates		Comment	
		+N/-S (usft)	+E/-W (usft)		
200.0	200.0	0.0	0.0	Build 3° / 100'	
770.6	762.2	-58.8	-60.9	EOB @ 17.12° Inc. / 226.01° Azm	
7,550.7	7,241.8	-1,444.8	-1,496.8	Drop 3° / 100'	
8,121.3	7,804.0	-1,503.5	-1,557.7	EOD @ Vertical / Build 1.5° / 100'	
8,224.1	7,906.8	-1,504.0	-1,559.0	EOB @ 1.54° Inc. / 250.17° Azm	
11,885.6	11,567.0	-1,537.4	-1,651.6	TD @ 11885.6' MD / 11567.0' TVD	