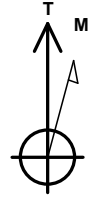


ANADARKO PETROLEUM CORP

Project: WELD COUNTY (NAD 83)  
Site: Windsock 15-21HZ  
Well: Windsock 21-10HZ  
Wellbore: OH  
Design: OH



Azimuths to True North  
Magnetic North: 8.05°  
  
Magnetic Field  
Strength: 51893.3nT  
Dip Angle: 66.46°  
Date: 11/25/2019  
Model: IGRF2015

PROJECT DETAILS: WELD COUNTY (NAD 83)  
  
Geodetic System: Universal Transverse Mercator (US Survey Feet)  
Datum: North American Datum 1983  
Ellipsoid: GRS 1980  
Zone: Zone 13N (108 W to 102 W)



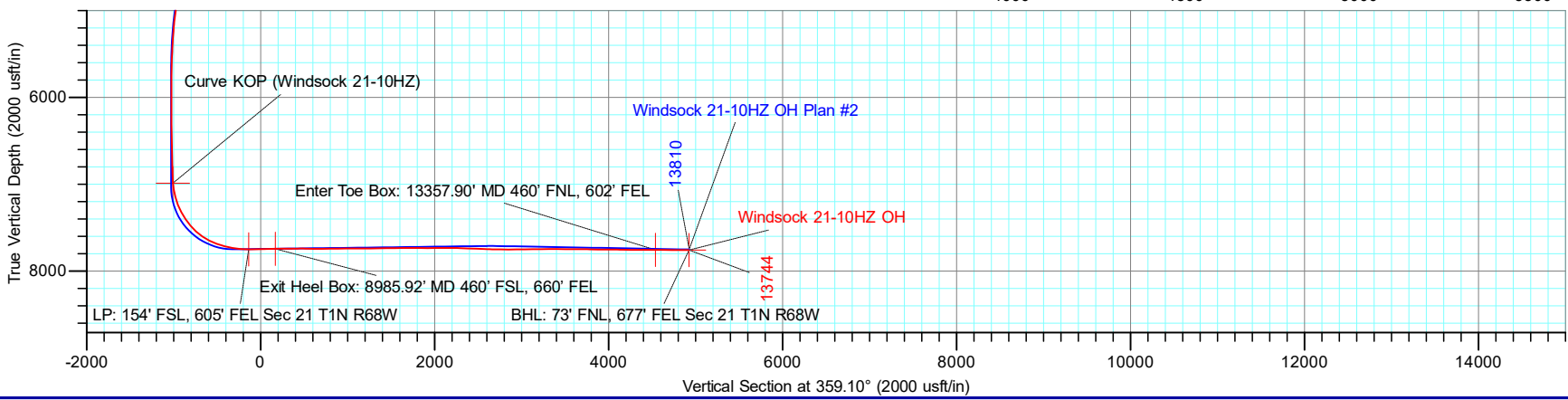
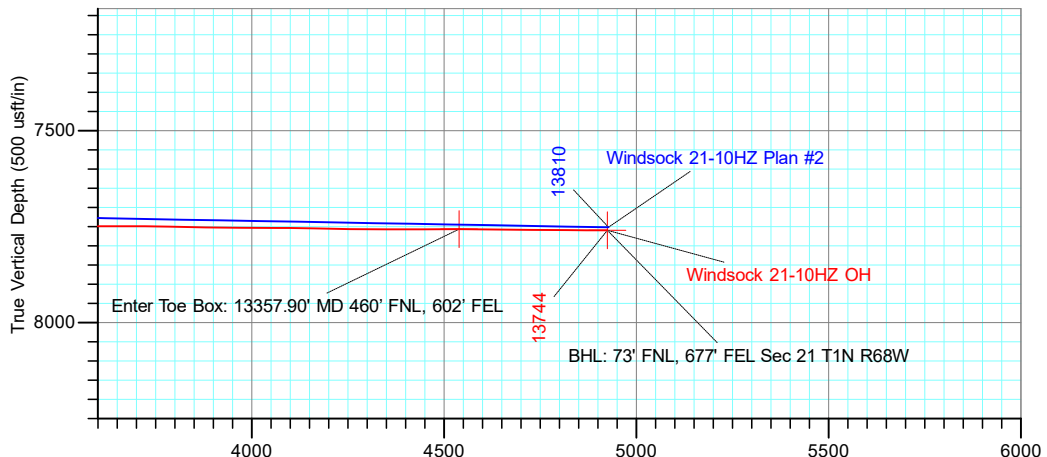
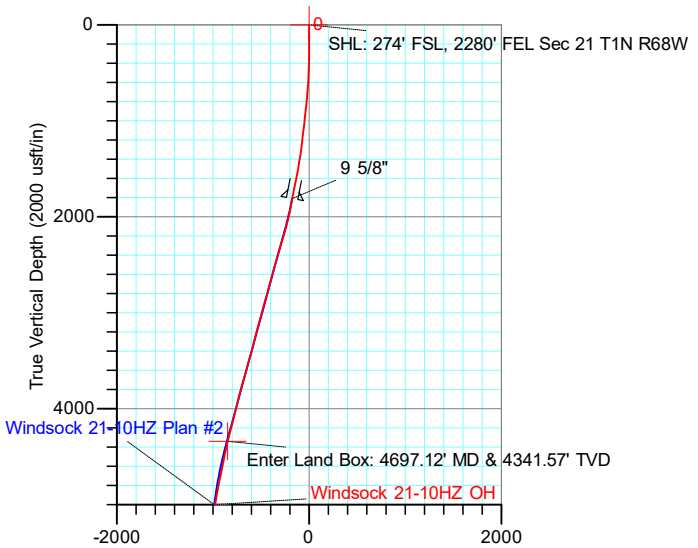
1N-68W-21

20' KB + 5222' GE @ 5242.00usft

DESIGN TARGET DETAILS

| Name                                           | TVD     | +N/-S   | +E/-W   | Latitude  | Longitude   |
|------------------------------------------------|---------|---------|---------|-----------|-------------|
| BHL: 73' FNL, 677' FEL Sec 21 T1N R68W         | 7759.88 | 4950.45 | 1587.29 | 40.043707 | -105.001602 |
| Curve KOP (Windsock 21-10HZ)                   | 6989.61 | -981.57 | 1692.28 | 40.027423 | -105.001228 |
| Enter Land Box: 4697.12' MD & 4341.57' TVD     | 4341.57 | -824.19 | 1401.63 | 40.027855 | -105.002266 |
| Enter Toe Box: 13357.90' MD 460' FNL, 602' FEL | 7756.96 | 4564.79 | 1605.35 | 40.042649 | -105.001537 |
| Exit Heel Box: 8985.92' MD 460' FSL, 660' FEL  | 7745.45 | 195.04  | 1676.78 | 40.030653 | -105.001283 |
| LP: 154' FSL, 605' FEL Sec 21 T1N R68W         | 7750.88 | -110.82 | 1675.05 | 40.029814 | -105.001290 |
| SHL: 274' FSL, 2280' FEL Sec 21 T1N R68W       | 0.00    | 0.00    | 0.00    | 40.030118 | -105.007271 |

**ACTUAL LINE CALLS**  
**SHL: 274' FSL, 2280' FEL Sec 21 T1N R68W**  
**HEEL: 154' FSL, 605' FEL Sec 21 T1N R68W**  
**BHL: 73' FNL, 677' FEL Sec 21 T1N R68W**



TOTAL DIRECTIONAL SERVICES LLC  
671 Academy Ct, Windsor, CO 80550  
Phone: (970) 460-9402

Design: OH (Windsock 21-10HZ/OH)  
Windsock 15-21HZ  
Created By: Micah Ault  
Date: 14:56, January 29 2020  
Approved: \_\_\_\_\_ Date: \_\_\_\_\_

# ANADARKO PETROLEUM CORP

Project: WELD COUNTY (NAD 83)  
 Site: Windsock 15-21HZ  
 Well: Windsock 21-10HZ  
 Wellbore: OH  
 Design: OH



Azimuths to True North  
 Magnetic North: 8.05°

Magnetic Field  
 Strength: 51893.3nT  
 Dip Angle: 66.46°  
 Date: 11/25/2019  
 Model: IGRF2015

PROJECT DETAILS: WELD COUNTY (NAD 83)  
 Geodetic System: Universal Transverse Mercator (US Survey Feet)  
 Datum: North American Datum 1983  
 Ellipsoid: GRS 1980  
 Zone: Zone 13N (108 W to 102 W)

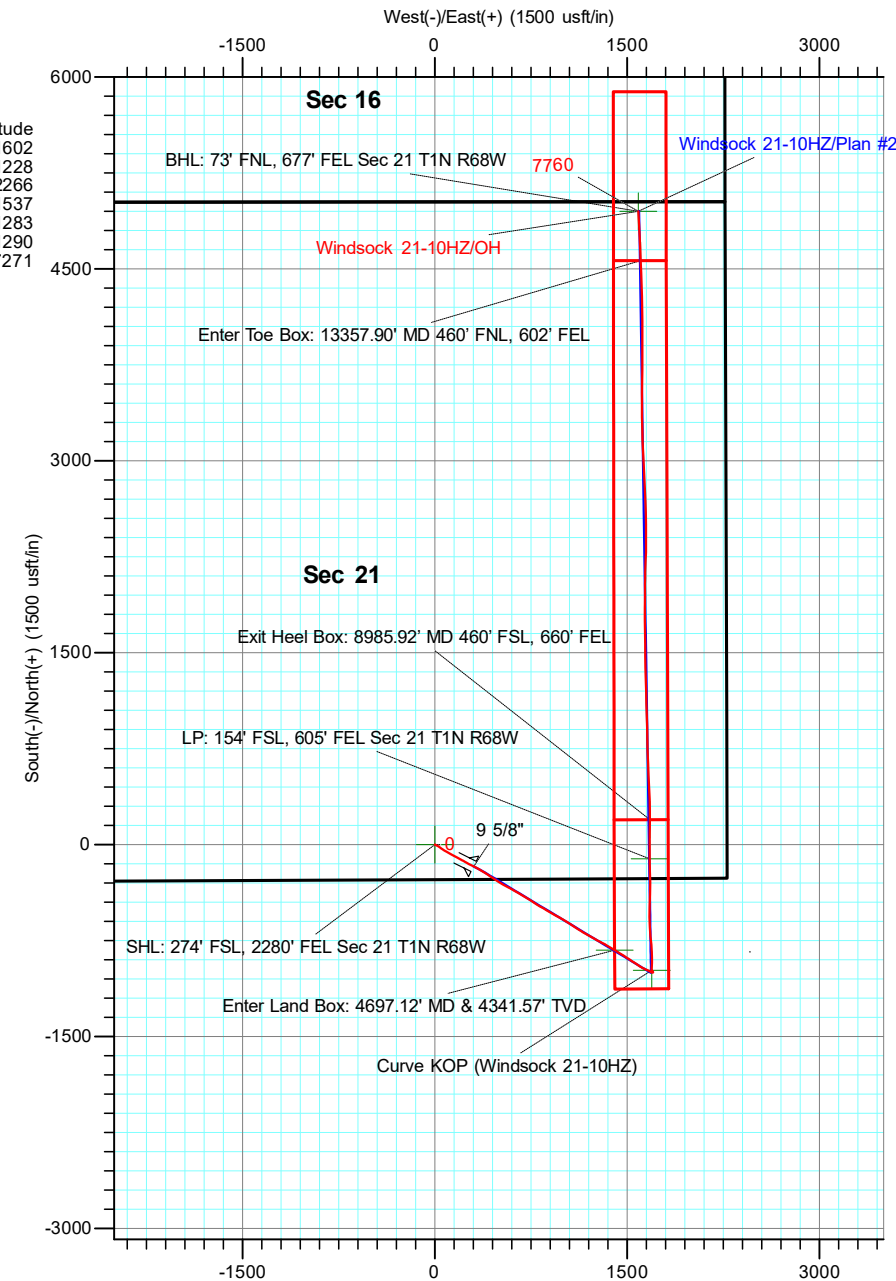
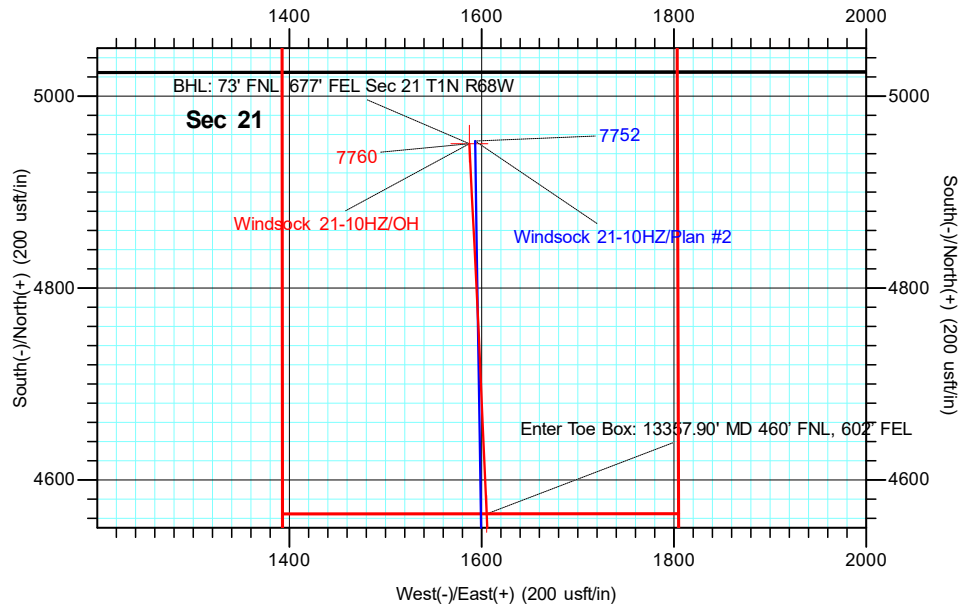


## DESIGN TARGET DETAILS

| Name                                           | TVD     | +N/-S   | +E/-W   | Northing    | Easting    | Latitude  | Longitude   |
|------------------------------------------------|---------|---------|---------|-------------|------------|-----------|-------------|
| BHL: 73' FNL, 677' FEL Sec 21 T1N R68W         | 7759.88 | 4950.45 | 1587.29 | 14542649.11 | 1639968.37 | 40.043707 | -105.001602 |
| Curve KOP (Windsock 21-10HZ)                   | 6989.61 | -981.57 | 1692.28 | 14536719.45 | 1640072.83 | 40.027423 | -105.001228 |
| Enter Land Box: 4697.12' MD & 4341.57' TVD     | 4341.57 | -824.19 | 1401.63 | 14536876.80 | 1639782.31 | 40.027855 | -105.002266 |
| Enter Toe Box: 13357.90' MD 460' FNL, 602' FEL | 7756.96 | 4564.79 | 1605.35 | 14542263.60 | 1639986.39 | 40.042649 | -105.001537 |
| Exit Heel Box: 8985.92' MD 460' FSL, 660' FEL  | 7745.45 | 195.04  | 1676.78 | 14537895.60 | 1640057.44 | 40.030653 | -105.001283 |
| LP: 154' FSL, 605' FEL Sec 21 T1N R68W         | 7750.88 | -110.82 | 1675.05 | 14537589.86 | 1640055.68 | 40.029814 | -105.001290 |
| SHL: 274' FSL, 2280' FEL Sec 21 T1N R68W       | 0.00    | 0.00    | 0.00    | 14537700.77 | 1638381.31 | 40.030118 | -105.002721 |

## ACTUAL LINE CALLS

**SHL: 274' FSL, 2280' FEL Sec 21 T1N R68W**  
**HEEL: 154' FSL, 605' FEL Sec 21 T1N R68W**  
**BHL: 73' FNL, 677' FEL Sec 21 T1N R68W**



**TOTAL DIRECTIONAL SERVICES LLC**  
 671 Academy Ct, Windsor, CO 80550  
 Phone: (970) 460-9402

Design: OH (Windsock 21-10HZ/OH)  
 Windsock 15-21HZ  
 Created By: Micah Ault  
 Date: \_\_\_\_\_  
 Approved: \_\_\_\_\_  
 Date: 14:58, January 29 2020



# **ANADARKO PETROLEUM CORP**

**WELD COUNTY (NAD 83)**

**Windsock 15-21HZ**

**Windsock 21-10HZ**

**OH**

**Design: OH**

## **Standard Survey Report**

**29 January, 2020**



|                  |                         |                                     |                                 |
|------------------|-------------------------|-------------------------------------|---------------------------------|
| <b>Company:</b>  | ANADARKO PETROLEUM CORP | <b>Local Co-ordinate Reference:</b> | Well Windsock 21-10HZ           |
| <b>Project:</b>  | WELD COUNTY (NAD 83)    | <b>TVD Reference:</b>               | 20' KB + 5222' GE @ 5242.00usft |
| <b>Site:</b>     | Windsock 15-21HZ        | <b>MD Reference:</b>                | 20' KB + 5222' GE @ 5242.00usft |
| <b>Well:</b>     | Windsock 21-10HZ        | <b>North Reference:</b>             | True                            |
| <b>Wellbore:</b> | OH                      | <b>Survey Calculation Method:</b>   | Minimum Curvature               |
| <b>Design:</b>   | OH                      | <b>Database:</b>                    | EDM 5000.15 Single User Db      |

|                    |                                                |                      |                             |
|--------------------|------------------------------------------------|----------------------|-----------------------------|
| <b>Project</b>     | WELD COUNTY (NAD 83)                           |                      |                             |
| <b>Map System:</b> | Universal Transverse Mercator (US Survey Feet) | <b>System Datum:</b> | Mean Sea Level              |
| <b>Geo Datum:</b>  | North American Datum 1983                      |                      |                             |
| <b>Map Zone:</b>   | Zone 13N (108 W to 102 W)                      |                      | Using geodetic scale factor |

|                              |                  |                          |                    |
|------------------------------|------------------|--------------------------|--------------------|
| <b>Site</b>                  | Windsock 15-21HZ |                          |                    |
| <b>Site Position:</b>        |                  | <b>Northing:</b>         | 14,537,796.91 usft |
| <b>From:</b>                 | Map              | <b>Easting:</b>          | 1,638,286.42 usft  |
| <b>Position Uncertainty:</b> | 0.00 usft        | <b>Slot Radius:</b>      | 13-3/16 "          |
|                              |                  | <b>Latitude:</b>         | 40.030382          |
|                              |                  | <b>Longitude:</b>        | -105.007610        |
|                              |                  | <b>Grid Convergence:</b> | 0.00 °             |

|                             |                  |                            |                                     |
|-----------------------------|------------------|----------------------------|-------------------------------------|
| <b>Well</b>                 | Windsock 21-10HZ |                            |                                     |
| <b>Well Position</b>        | <b>+N/-S</b>     | 0.00 usft                  | <b>Northing:</b> 14,537,700.77 usft |
|                             | <b>+E/-W</b>     | 0.00 usft                  | <b>Easting:</b> 1,638,381.31 usft   |
| <b>Position Uncertainty</b> | 3.28 usft        | <b>Wellhead Elevation:</b> | usft                                |
|                             |                  | <b>Latitude:</b>           | 40.030118                           |
|                             |                  | <b>Longitude:</b>          | -105.007271                         |
|                             |                  | <b>Ground Level:</b>       | 5,222.00 usft                       |

|                  |                   |                    |                            |
|------------------|-------------------|--------------------|----------------------------|
| <b>Wellbore</b>  | OH                |                    |                            |
| <b>Magnetics</b> | <b>Model Name</b> | <b>Sample Date</b> | <b>Declination (°)</b>     |
|                  | IGRF2015          | 11/25/2019         | 8.05                       |
|                  |                   |                    | <b>Dip Angle (°)</b>       |
|                  |                   |                    | 66.46                      |
|                  |                   |                    | <b>Field Strength (nT)</b> |
|                  |                   |                    | 51,893.26678509            |

|                          |                                |                      |                      |
|--------------------------|--------------------------------|----------------------|----------------------|
| <b>Design</b>            | OH                             |                      |                      |
| <b>Audit Notes:</b>      |                                |                      |                      |
| <b>Version:</b>          | 1.0                            | <b>Phase:</b>        | ACTUAL               |
|                          |                                | <b>Tie On Depth:</b> | 0.00                 |
| <b>Vertical Section:</b> | <b>Depth From (TVD) (usft)</b> | <b>+N/-S (usft)</b>  | <b>+E/-W (usft)</b>  |
|                          | 0.00                           | 0.00                 | 0.00                 |
|                          |                                |                      | <b>Direction (°)</b> |
|                          |                                |                      | 359.10               |

|                       |                  |                                  |                                                          |
|-----------------------|------------------|----------------------------------|----------------------------------------------------------|
| <b>Survey Program</b> | <b>Date</b>      | 1/29/2020                        |                                                          |
| <b>From (usft)</b>    | <b>To (usft)</b> | <b>Survey (Wellbore)</b>         | <b>Tool Name</b>                                         |
| 131.00                | 1,848.00         | Survey #1 - Surface Surveys (OH) | APC_ISCWSA REV 2 MWD+ Fixed:v2:crustal field declination |
| 1,928.00              | 13,689.00        | Survey #2 (OH)                   | APC_ISCWSA REV 2 MWD+ Fixed:v2:crustal field declination |
| 13,744.00             | 13,744.00        | Survey #3 - Proj to TD (OH)      | BLIND                                                    |
|                       |                  |                                  | OWSG BLIND                                               |

|                                                 |                        |                    |                              |                     |                     |                                |                                |                               |                              |
|-------------------------------------------------|------------------------|--------------------|------------------------------|---------------------|---------------------|--------------------------------|--------------------------------|-------------------------------|------------------------------|
| <b>Survey</b>                                   |                        |                    |                              |                     |                     |                                |                                |                               |                              |
| <b>Measured Depth (usft)</b>                    | <b>Inclination (°)</b> | <b>Azimuth (°)</b> | <b>Vertical Depth (usft)</b> | <b>+N/-S (usft)</b> | <b>+E/-W (usft)</b> | <b>Vertical Section (usft)</b> | <b>Dogleg Rate (°/100usft)</b> | <b>Build Rate (°/100usft)</b> | <b>Turn Rate (°/100usft)</b> |
| 0.00                                            | 0.00                   | 0.00               | 0.00                         | 0.00                | 0.00                | 0.00                           | 0.00                           | 0.00                          | 0.00                         |
| <b>SHL: 274' FSL, 2280' FEL Sec 21 T1N R68W</b> |                        |                    |                              |                     |                     |                                |                                |                               |                              |
| 12.00                                           | 0.05                   | 317.60             | 12.00                        | 0.00                | 0.00                | 0.00                           | 0.44                           | 0.44                          | 0.00                         |
| <b>SHL (Windsock 21-10HZ)</b>                   |                        |                    |                              |                     |                     |                                |                                |                               |                              |
| 131.00                                          | 0.57                   | 317.60             | 131.00                       | 0.48                | -0.44               | 0.49                           | 0.44                           | 0.44                          | 0.00                         |
| 226.00                                          | 0.31                   | 72.21              | 226.00                       | 0.91                | -0.51               | 0.92                           | 0.79                           | -0.27                         | 120.64                       |
| 321.00                                          | 2.20                   | 119.85             | 320.97                       | 0.08                | 1.31                | 0.06                           | 2.11                           | 1.99                          | 50.15                        |
| 416.00                                          | 2.86                   | 114.05             | 415.88                       | -1.79               | 5.06                | -1.87                          | 0.74                           | 0.69                          | -6.11                        |

|                  |                         |                                     |                                 |
|------------------|-------------------------|-------------------------------------|---------------------------------|
| <b>Company:</b>  | ANADARKO PETROLEUM CORP | <b>Local Co-ordinate Reference:</b> | Well Windsock 21-10HZ           |
| <b>Project:</b>  | WELD COUNTY (NAD 83)    | <b>TVD Reference:</b>               | 20' KB + 5222' GE @ 5242.00usft |
| <b>Site:</b>     | Windsock 15-21HZ        | <b>MD Reference:</b>                | 20' KB + 5222' GE @ 5242.00usft |
| <b>Well:</b>     | Windsock 21-10HZ        | <b>North Reference:</b>             | True                            |
| <b>Wellbore:</b> | OH                      | <b>Survey Calculation Method:</b>   | Minimum Curvature               |
| <b>Design:</b>   | OH                      | <b>Database:</b>                    | EDM 5000.15 Single User Db      |

| Survey                |                 |             |                       |              |              |                         |                         |                        |                       |  |
|-----------------------|-----------------|-------------|-----------------------|--------------|--------------|-------------------------|-------------------------|------------------------|-----------------------|--|
| Measured Depth (usft) | Inclination (°) | Azimuth (°) | Vertical Depth (usft) | +N/-S (usft) | +E/-W (usft) | Vertical Section (usft) | Dogleg Rate (°/100usft) | Build Rate (°/100usft) | Turn Rate (°/100usft) |  |
| 511.00                | 5.80            | 116.33      | 510.60                | -4.89        | 11.53        | -5.07                   | 3.10                    | 3.09                   | 2.40                  |  |
| 607.00                | 6.81            | 115.72      | 606.01                | -9.51        | 21.00        | -9.84                   | 1.05                    | 1.05                   | -0.64                 |  |
| 702.00                | 7.29            | 126.79      | 700.30                | -15.57       | 30.90        | -16.05                  | 1.51                    | 0.51                   | 11.65                 |  |
| 797.00                | 9.67            | 126.53      | 794.25                | -23.93       | 42.14        | -24.58                  | 2.51                    | 2.51                   | -0.27                 |  |
| 893.00                | 10.99           | 122.66      | 888.70                | -33.66       | 56.33        | -34.54                  | 1.55                    | 1.38                   | -4.03                 |  |
| 988.00                | 11.29           | 122.57      | 981.91                | -43.56       | 71.79        | -44.68                  | 0.32                    | 0.32                   | -0.09                 |  |
| 1,083.00              | 12.52           | 120.90      | 1,074.86              | -53.85       | 88.46        | -55.23                  | 1.34                    | 1.29                   | -1.76                 |  |
| 1,178.00              | 13.32           | 118.44      | 1,167.46              | -64.35       | 106.92       | -66.02                  | 1.02                    | 0.84                   | -2.59                 |  |
| 1,274.00              | 14.50           | 118.88      | 1,260.64              | -75.42       | 127.17       | -77.41                  | 1.23                    | 1.23                   | 0.46                  |  |
| 1,369.00              | 16.79           | 118.18      | 1,352.11              | -87.65       | 149.68       | -89.99                  | 2.42                    | 2.41                   | -0.74                 |  |
| 1,464.00              | 18.72           | 118.97      | 1,442.59              | -101.51      | 175.11       | -104.25                 | 2.05                    | 2.03                   | 0.83                  |  |
| 1,559.00              | 20.13           | 117.65      | 1,532.18              | -116.48      | 202.93       | -119.66                 | 1.55                    | 1.48                   | -1.39                 |  |
| 1,654.00              | 21.97           | 120.20      | 1,620.83              | -133.01      | 232.78       | -136.65                 | 2.16                    | 1.94                   | 2.68                  |  |
| 1,749.00              | 22.85           | 117.65      | 1,708.66              | -150.51      | 264.47       | -154.65                 | 1.38                    | 0.93                   | -2.68                 |  |
| 1,848.00              | 22.50           | 116.59      | 1,800.01              | -167.91      | 298.44       | -172.58                 | 0.54                    | -0.35                  | -1.07                 |  |
| 1,859.00              | 22.35           | 116.61      | 1,810.18              | -169.79      | 302.19       | -174.51                 | 1.33                    | -1.33                  | 0.18                  |  |
| 9 5/8"                |                 |             |                       |              |              |                         |                         |                        |                       |  |
| 1,928.00              | 21.44           | 116.74      | 1,874.20              | -181.34      | 325.19       | -186.43                 | 1.33                    | -1.32                  | 0.19                  |  |
| 2,021.00              | 21.81           | 122.03      | 1,960.66              | -198.15      | 355.02       | -203.70                 | 2.13                    | 0.40                   | 5.69                  |  |
| 2,114.00              | 23.22           | 122.91      | 2,046.57              | -217.28      | 385.05       | -223.30                 | 1.56                    | 1.52                   | 0.95                  |  |
| 2,207.00              | 26.68           | 122.33      | 2,130.88              | -238.41      | 418.10       | -244.95                 | 3.73                    | 3.72                   | -0.62                 |  |
| 2,300.00              | 28.87           | 123.92      | 2,213.16              | -262.11      | 454.38       | -269.21                 | 2.49                    | 2.35                   | 1.71                  |  |
| 2,393.00              | 29.47           | 123.11      | 2,294.37              | -287.13      | 492.17       | -294.83                 | 0.77                    | 0.65                   | -0.87                 |  |
| 2,485.00              | 29.00           | 120.10      | 2,374.65              | -310.68      | 530.42       | -318.97                 | 1.68                    | -0.51                  | -3.27                 |  |
| 2,579.00              | 29.01           | 117.27      | 2,456.87              | -332.55      | 570.40       | -341.47                 | 1.46                    | 0.01                   | -3.01                 |  |
| 2,671.00              | 29.20           | 120.14      | 2,537.25              | -354.04      | 609.63       | -363.57                 | 1.53                    | 0.21                   | 3.12                  |  |
| 2,765.00              | 27.19           | 119.70      | 2,620.09              | -376.20      | 648.12       | -386.33                 | 2.15                    | -2.14                  | -0.47                 |  |
| 2,858.00              | 27.38           | 121.51      | 2,702.75              | -397.90      | 684.81       | -408.61                 | 0.92                    | 0.20                   | 1.95                  |  |
| 2,952.00              | 27.88           | 121.00      | 2,786.03              | -420.52      | 722.08       | -431.81                 | 0.59                    | 0.53                   | -0.54                 |  |
| 3,046.00              | 26.85           | 122.96      | 2,869.51              | -443.39      | 758.73       | -455.25                 | 1.46                    | -1.10                  | 2.09                  |  |
| 3,140.00              | 27.27           | 123.22      | 2,953.22              | -466.74      | 794.56       | -479.16                 | 0.46                    | 0.45                   | 0.28                  |  |
| 3,233.00              | 27.18           | 118.78      | 3,035.93              | -488.64      | 831.00       | -501.63                 | 2.19                    | -0.10                  | -4.77                 |  |
| 3,327.00              | 27.43           | 121.29      | 3,119.46              | -510.22      | 868.32       | -523.80                 | 1.25                    | 0.27                   | 2.67                  |  |
| 3,420.00              | 27.03           | 121.00      | 3,202.15              | -532.23      | 904.74       | -546.37                 | 0.45                    | -0.43                  | -0.31                 |  |
| 3,513.00              | 26.27           | 118.75      | 3,285.27              | -553.01      | 940.90       | -567.72                 | 1.36                    | -0.82                  | -2.42                 |  |
| 3,607.00              | 26.63           | 118.17      | 3,369.43              | -572.96      | 977.71       | -588.25                 | 0.47                    | 0.38                   | -0.62                 |  |
| 3,699.00              | 29.39           | 122.27      | 3,450.65              | -594.76      | 1,014.98     | -610.63                 | 3.66                    | 3.00                   | 4.46                  |  |
| 3,792.00              | 26.48           | 121.73      | 3,532.81              | -617.85      | 1,051.92     | -634.30                 | 3.14                    | -3.13                  | -0.58                 |  |
| 3,888.00              | 26.21           | 123.30      | 3,618.84              | -640.75      | 1,087.85     | -657.75                 | 0.78                    | -0.28                  | 1.64                  |  |
| 3,981.00              | 26.31           | 123.07      | 3,702.24              | -663.27      | 1,122.28     | -680.81                 | 0.15                    | 0.11                   | -0.25                 |  |
| 4,074.00              | 28.04           | 121.61      | 3,784.97              | -685.97      | 1,158.17     | -704.08                 | 1.99                    | 1.86                   | -1.57                 |  |
| 4,167.00              | 27.22           | 118.50      | 3,867.37              | -707.58      | 1,195.48     | -726.27                 | 1.78                    | -0.88                  | -3.34                 |  |
| 4,262.00              | 26.56           | 120.34      | 3,952.10              | -728.68      | 1,232.91     | -747.95                 | 1.12                    | -0.69                  | 1.94                  |  |
| 4,356.00              | 26.00           | 116.59      | 4,036.39              | -748.52      | 1,269.47     | -768.36                 | 1.86                    | -0.60                  | -3.99                 |  |

|                  |                         |                                     |                                 |
|------------------|-------------------------|-------------------------------------|---------------------------------|
| <b>Company:</b>  | ANADARKO PETROLEUM CORP | <b>Local Co-ordinate Reference:</b> | Well Windsock 21-10HZ           |
| <b>Project:</b>  | WELD COUNTY (NAD 83)    | <b>TVD Reference:</b>               | 20' KB + 5222' GE @ 5242.00usft |
| <b>Site:</b>     | Windsock 15-21HZ        | <b>MD Reference:</b>                | 20' KB + 5222' GE @ 5242.00usft |
| <b>Well:</b>     | Windsock 21-10HZ        | <b>North Reference:</b>             | True                            |
| <b>Wellbore:</b> | OH                      | <b>Survey Calculation Method:</b>   | Minimum Curvature               |
| <b>Design:</b>   | OH                      | <b>Database:</b>                    | EDM 5000.15 Single User Db      |

| Survey                                     |                 |             |                       |              |              |                         |                         |                        |                       |  |
|--------------------------------------------|-----------------|-------------|-----------------------|--------------|--------------|-------------------------|-------------------------|------------------------|-----------------------|--|
| Measured Depth (usft)                      | Inclination (°) | Azimuth (°) | Vertical Depth (usft) | +N/-S (usft) | +E/-W (usft) | Vertical Section (usft) | Dogleg Rate (°/100usft) | Build Rate (°/100usft) | Turn Rate (°/100usft) |  |
| 4,451.00                                   | 26.59           | 118.73      | 4,121.56              | -768.06      | 1,306.74     | -788.49                 | 1.18                    | 0.62                   | 2.25                  |  |
| 4,544.00                                   | 27.48           | 120.71      | 4,204.40              | -789.02      | 1,343.44     | -810.02                 | 1.36                    | 0.96                   | 2.13                  |  |
| 4,637.00                                   | 26.56           | 121.65      | 4,287.25              | -810.89      | 1,379.59     | -832.46                 | 1.09                    | -0.99                  | 1.01                  |  |
| 4,697.12                                   | 24.15           | 120.50      | 4,341.57              | -824.19      | 1,401.63     | -846.10                 | 4.09                    | -4.00                  | -1.91                 |  |
| Enter Land Box: 4697.12' MD & 4341.57' TVD |                 |             |                       |              |              |                         |                         |                        |                       |  |
| 4,730.00                                   | 22.84           | 119.78      | 4,371.73              | -830.77      | 1,412.96     | -852.86                 | 4.09                    | -3.99                  | -2.20                 |  |
| 4,822.00                                   | 22.66           | 122.36      | 4,456.57              | -849.12      | 1,443.43     | -871.69                 | 1.10                    | -0.20                  | 2.80                  |  |
| 4,914.00                                   | 19.19           | 122.05      | 4,542.49              | -866.64      | 1,471.23     | -889.64                 | 3.77                    | -3.77                  | -0.34                 |  |
| 5,008.00                                   | 19.17           | 124.76      | 4,631.27              | -883.64      | 1,497.00     | -907.04                 | 0.95                    | -0.02                  | 2.88                  |  |
| 5,100.00                                   | 20.58           | 122.15      | 4,717.79              | -900.85      | 1,523.10     | -924.67                 | 1.81                    | 1.53                   | -2.84                 |  |
| 5,221.00                                   | 19.07           | 123.58      | 4,831.62              | -923.11      | 1,557.58     | -947.46                 | 1.31                    | -1.25                  | 1.18                  |  |
| 5,314.00                                   | 16.31           | 123.58      | 4,920.21              | -938.73      | 1,581.12     | -963.45                 | 2.97                    | -2.97                  | 0.00                  |  |
| 5,408.00                                   | 14.86           | 122.68      | 5,010.76              | -952.54      | 1,602.26     | -977.59                 | 1.56                    | -1.54                  | -0.96                 |  |
| 5,501.00                                   | 13.10           | 118.72      | 5,101.00              | -964.05      | 1,621.54     | -989.40                 | 2.15                    | -1.89                  | -4.26                 |  |
| 5,595.00                                   | 10.69           | 114.68      | 5,192.98              | -972.81      | 1,638.81     | -998.43                 | 2.71                    | -2.56                  | -4.30                 |  |
| 5,687.00                                   | 9.27            | 113.52      | 5,283.58              | -979.33      | 1,653.36     | -1,005.18               | 1.56                    | -1.54                  | -1.26                 |  |
| 5,781.00                                   | 8.09            | 109.62      | 5,376.50              | -984.57      | 1,666.53     | -1,010.63               | 1.40                    | -1.26                  | -4.15                 |  |
| 5,875.00                                   | 6.53            | 122.86      | 5,469.74              | -989.69      | 1,677.25     | -1,015.92               | 2.43                    | -1.66                  | 14.09                 |  |
| 5,968.00                                   | 3.93            | 127.36      | 5,562.35              | -994.50      | 1,684.23     | -1,020.83               | 2.83                    | -2.80                  | 4.84                  |  |
| 6,062.00                                   | 3.21            | 115.00      | 5,656.17              | -997.57      | 1,689.18     | -1,023.97               | 1.12                    | -0.77                  | -13.15                |  |
| 6,156.00                                   | 2.37            | 100.34      | 5,750.06              | -999.03      | 1,693.47     | -1,025.50               | 1.17                    | -0.89                  | -15.60                |  |
| 6,250.00                                   | 1.78            | 87.28       | 5,843.99              | -999.31      | 1,696.84     | -1,025.84               | 0.80                    | -0.63                  | -13.89                |  |
| 6,343.00                                   | 1.84            | 68.39       | 5,936.95              | -998.69      | 1,699.67     | -1,025.26               | 0.64                    | 0.06                   | -20.31                |  |
| 6,437.00                                   | 0.59            | 178.37      | 6,030.93              | -998.62      | 1,701.09     | -1,025.21               | 2.25                    | -1.33                  | 117.00                |  |
| 6,530.00                                   | 0.25            | 58.83       | 6,123.93              | -998.99      | 1,701.28     | -1,025.59               | 0.80                    | -0.37                  | -128.54               |  |
| 6,624.00                                   | 0.41            | 21.92       | 6,217.93              | -998.57      | 1,701.58     | -1,025.17               | 0.27                    | 0.17                   | -39.27                |  |
| 6,717.00                                   | 0.54            | 4.85        | 6,310.93              | -997.83      | 1,701.74     | -1,024.43               | 0.21                    | 0.14                   | -18.35                |  |
| 6,810.00                                   | 0.95            | 349.76      | 6,403.92              | -996.63      | 1,701.64     | -1,023.24               | 0.49                    | 0.44                   | -16.23                |  |
| 6,904.00                                   | 1.40            | 348.10      | 6,497.90              | -994.74      | 1,701.27     | -1,021.34               | 0.48                    | 0.48                   | -1.77                 |  |
| 6,998.00                                   | 1.39            | 334.34      | 6,591.87              | -992.59      | 1,700.54     | -1,019.18               | 0.36                    | -0.01                  | -14.64                |  |
| 7,092.00                                   | 1.50            | 322.28      | 6,685.84              | -990.59      | 1,699.29     | -1,017.16               | 0.34                    | 0.12                   | -12.83                |  |
| 7,185.00                                   | 1.78            | 321.01      | 6,778.80              | -988.50      | 1,697.64     | -1,015.05               | 0.30                    | 0.30                   | -1.37                 |  |
| 7,279.00                                   | 2.26            | 320.55      | 6,872.74              | -985.94      | 1,695.54     | -1,012.45               | 0.51                    | 0.51                   | -0.49                 |  |
| 7,372.00                                   | 2.67            | 319.69      | 6,965.66              | -982.87      | 1,692.97     | -1,009.34               | 0.44                    | 0.44                   | -0.92                 |  |
| 7,395.98                                   | 4.46            | 339.21      | 6,989.59              | -981.57      | 1,692.28     | -1,008.03               | 8.92                    | 7.47                   | 81.40                 |  |
| Curve KOP (Windsock 21-10HZ)               |                 |             |                       |              |              |                         |                         |                        |                       |  |
| 7,466.00                                   | 10.47           | 353.67      | 7,058.99              | -972.69      | 1,690.61     | -999.13                 | 8.92                    | 8.58                   | 20.65                 |  |
| 7,558.00                                   | 14.76           | 11.71       | 7,148.78              | -952.89      | 1,692.07     | -979.35                 | 6.28                    | 4.66                   | 19.61                 |  |
| 7,652.00                                   | 20.64           | 357.08      | 7,238.34              | -924.58      | 1,693.66     | -951.07                 | 7.80                    | 6.26                   | -15.56                |  |
| 7,745.00                                   | 29.71           | 0.33        | 7,322.42              | -885.08      | 1,692.95     | -911.56                 | 9.86                    | 9.75                   | 3.49                  |  |
| 7,839.00                                   | 32.78           | 358.65      | 7,402.78              | -836.34      | 1,692.49     | -862.82                 | 3.39                    | 3.27                   | -1.79                 |  |
| 7,932.00                                   | 40.90           | 353.04      | 7,477.17              | -780.84      | 1,688.20     | -807.26                 | 9.44                    | 8.73                   | -6.03                 |  |
| 8,026.00                                   | 47.06           | 355.44      | 7,544.78              | -715.93      | 1,681.73     | -742.25                 | 6.79                    | 6.55                   | 2.55                  |  |

|                  |                         |                                     |                                 |
|------------------|-------------------------|-------------------------------------|---------------------------------|
| <b>Company:</b>  | ANADARKO PETROLEUM CORP | <b>Local Co-ordinate Reference:</b> | Well Windsock 21-10HZ           |
| <b>Project:</b>  | WELD COUNTY (NAD 83)    | <b>TVD Reference:</b>               | 20' KB + 5222' GE @ 5242.00usft |
| <b>Site:</b>     | Windsock 15-21HZ        | <b>MD Reference:</b>                | 20' KB + 5222' GE @ 5242.00usft |
| <b>Well:</b>     | Windsock 21-10HZ        | <b>North Reference:</b>             | True                            |
| <b>Wellbore:</b> | OH                      | <b>Survey Calculation Method:</b>   | Minimum Curvature               |
| <b>Design:</b>   | OH                      | <b>Database:</b>                    | EDM 5000.15 Single User Db      |

| Survey                                               |                 |             |                       |              |              |                         |                         |                        |                       |
|------------------------------------------------------|-----------------|-------------|-----------------------|--------------|--------------|-------------------------|-------------------------|------------------------|-----------------------|
| Measured Depth (usft)                                | Inclination (°) | Azimuth (°) | Vertical Depth (usft) | +N/-S (usft) | +E/-W (usft) | Vertical Section (usft) | Dogleg Rate (°/100usft) | Build Rate (°/100usft) | Turn Rate (°/100usft) |
| 8,120.00                                             | 55.39           | 355.81      | 7,603.60              | -642.92      | 1,676.15     | -669.17                 | 8.87                    | 8.86                   | 0.39                  |
| 8,213.00                                             | 63.71           | 0.88        | 7,650.71              | -562.89      | 1,673.99     | -589.11                 | 10.10                   | 8.95                   | 5.45                  |
| 8,305.00                                             | 69.52           | 1.27        | 7,687.21              | -478.50      | 1,675.58     | -504.76                 | 6.33                    | 6.32                   | 0.42                  |
| 8,399.00                                             | 76.36           | 1.78        | 7,714.77              | -388.72      | 1,677.98     | -415.03                 | 7.30                    | 7.28                   | 0.54                  |
| 8,494.00                                             | 80.18           | 0.17        | 7,734.08              | -295.73      | 1,679.55     | -322.08                 | 4.35                    | 4.02                   | -1.69                 |
| 8,515.31                                             | 81.14           | 359.42      | 7,737.54              | -274.71      | 1,679.48     | -301.06                 | 5.67                    | 4.49                   | -3.51                 |
| <b>Heel (Windsock 21-10HZ)</b>                       |                 |             |                       |              |              |                         |                         |                        |                       |
| 8,586.00                                             | 84.32           | 356.97      | 7,746.49              | -204.64      | 1,677.27     | -230.96                 | 5.67                    | 4.50                   | -3.47                 |
| 8,680.00                                             | 90.32           | 0.31        | 7,750.88              | -110.82      | 1,675.05     | -137.12                 | 7.30                    | 6.38                   | 3.55                  |
| <b>LP: 154' FSL, 605' FEL Sec 21 T1N R68W</b>        |                 |             |                       |              |              |                         |                         |                        |                       |
| 8,772.00                                             | 90.99           | 359.75      | 7,749.83              | -18.83       | 1,675.10     | -45.14                  | 0.95                    | 0.73                   | -0.61                 |
| 8,866.00                                             | 91.52           | 0.94        | 7,747.77              | 75.15        | 1,675.66     | 48.82                   | 1.39                    | 0.56                   | 1.27                  |
| 8,958.00                                             | 90.81           | 0.30        | 7,745.90              | 167.12       | 1,676.66     | 140.76                  | 1.04                    | -0.77                  | -0.70                 |
| 8,985.92                                             | 91.03           | 0.20        | 7,745.45              | 195.04       | 1,676.78     | 168.68                  | 0.87                    | 0.79                   | -0.36                 |
| <b>Exit Heel Box: 8985.92' MD 460' FSL, 660' FEL</b> |                 |             |                       |              |              |                         |                         |                        |                       |
| 9,052.00                                             | 91.55           | 359.96      | 7,743.97              | 261.10       | 1,676.87     | 234.73                  | 0.87                    | 0.79                   | -0.36                 |
| 9,146.00                                             | 89.93           | 357.71      | 7,742.75              | 355.06       | 1,674.96     | 328.71                  | 2.95                    | -1.72                  | -2.39                 |
| 9,241.00                                             | 90.85           | 356.88      | 7,742.10              | 449.95       | 1,670.48     | 423.66                  | 1.30                    | 0.97                   | -0.87                 |
| 9,334.00                                             | 88.61           | 357.90      | 7,742.54              | 542.85       | 1,666.24     | 516.61                  | 2.65                    | -2.41                  | 1.10                  |
| 9,427.00                                             | 89.37           | 357.55      | 7,744.18              | 635.76       | 1,662.55     | 609.57                  | 0.90                    | 0.82                   | -0.38                 |
| 9,521.00                                             | 90.59           | 358.34      | 7,744.22              | 729.70       | 1,659.18     | 703.55                  | 1.55                    | 1.30                   | 0.84                  |
| 9,613.00                                             | 90.26           | 359.31      | 7,743.53              | 821.67       | 1,657.29     | 795.54                  | 1.11                    | -0.36                  | 1.05                  |
| 9,706.00                                             | 90.94           | 358.44      | 7,742.56              | 914.65       | 1,655.47     | 888.53                  | 1.19                    | 0.73                   | -0.94                 |
| 9,799.00                                             | 91.20           | 357.60      | 7,740.82              | 1,007.58     | 1,652.25     | 981.50                  | 0.95                    | 0.28                   | -0.90                 |
| 9,892.00                                             | 89.10           | 359.22      | 7,740.58              | 1,100.53     | 1,649.67     | 1,074.48                | 2.85                    | -2.26                  | 1.74                  |
| 9,987.00                                             | 89.93           | 359.00      | 7,741.38              | 1,195.52     | 1,648.20     | 1,169.48                | 0.90                    | 0.87                   | -0.23                 |
| 10,080.00                                            | 90.86           | 358.26      | 7,740.74              | 1,288.49     | 1,645.97     | 1,262.47                | 1.28                    | 1.00                   | -0.80                 |
| 10,174.00                                            | 91.27           | 357.61      | 7,738.99              | 1,382.41     | 1,642.59     | 1,356.44                | 0.82                    | 0.44                   | -0.69                 |
| 10,268.00                                            | 89.98           | 0.07        | 7,737.97              | 1,476.37     | 1,640.69     | 1,450.42                | 2.95                    | -1.37                  | 2.62                  |
| 10,360.00                                            | 91.51           | 359.54      | 7,736.77              | 1,568.36     | 1,640.37     | 1,542.40                | 1.76                    | 1.66                   | -0.58                 |
| 10,452.00                                            | 89.66           | 359.42      | 7,735.83              | 1,660.35     | 1,639.54     | 1,634.39                | 2.02                    | -2.01                  | -0.13                 |
| 10,547.00                                            | 90.76           | 358.66      | 7,735.49              | 1,755.33     | 1,637.95     | 1,729.39                | 1.41                    | 1.16                   | -0.80                 |
| 10,640.00                                            | 89.08           | 0.81        | 7,735.62              | 1,848.32     | 1,637.52     | 1,822.37                | 2.93                    | -1.81                  | 2.31                  |
| 10,735.00                                            | 89.87           | 0.72        | 7,736.49              | 1,943.31     | 1,638.78     | 1,917.33                | 0.84                    | 0.83                   | -0.09                 |
| 10,828.00                                            | 91.04           | 0.39        | 7,735.75              | 2,036.30     | 1,639.69     | 2,010.30                | 1.31                    | 1.26                   | -0.35                 |
| 10,921.00                                            | 90.77           | 1.58        | 7,734.28              | 2,129.27     | 1,641.28     | 2,103.23                | 1.31                    | -0.29                  | 1.28                  |
| 11,015.00                                            | 89.14           | 2.33        | 7,734.35              | 2,223.22     | 1,644.49     | 2,197.11                | 1.91                    | -1.73                  | 0.80                  |
| 11,108.00                                            | 87.56           | 0.27        | 7,737.03              | 2,316.15     | 1,646.60     | 2,290.00                | 2.79                    | -1.70                  | -2.22                 |
| 11,201.00                                            | 87.82           | 0.57        | 7,740.78              | 2,409.07     | 1,647.28     | 2,382.90                | 0.43                    | 0.28                   | 0.32                  |
| 11,295.00                                            | 88.29           | 358.77      | 7,743.97              | 2,503.01     | 1,646.74     | 2,476.83                | 1.98                    | 0.50                   | -1.91                 |
| 11,390.00                                            | 87.39           | 358.90      | 7,747.55              | 2,597.92     | 1,644.81     | 2,571.76                | 0.96                    | -0.95                  | 0.14                  |
| 11,482.00                                            | 89.13           | 357.54      | 7,750.34              | 2,689.83     | 1,641.95     | 2,663.70                | 2.40                    | 1.89                   | -1.48                 |
| 11,575.00                                            | 89.01           | 357.48      | 7,751.85              | 2,782.73     | 1,637.91     | 2,756.66                | 0.14                    | -0.13                  | -0.06                 |
| 11,668.00                                            | 90.68           | 357.38      | 7,752.10              | 2,875.63     | 1,633.74     | 2,849.61                | 1.80                    | 1.80                   | -0.11                 |

|                  |                         |                                     |                                 |
|------------------|-------------------------|-------------------------------------|---------------------------------|
| <b>Company:</b>  | ANADARKO PETROLEUM CORP | <b>Local Co-ordinate Reference:</b> | Well Windsock 21-10HZ           |
| <b>Project:</b>  | WELD COUNTY (NAD 83)    | <b>TVD Reference:</b>               | 20' KB + 5222' GE @ 5242.00usft |
| <b>Site:</b>     | Windsock 15-21HZ        | <b>MD Reference:</b>                | 20' KB + 5222' GE @ 5242.00usft |
| <b>Well:</b>     | Windsock 21-10HZ        | <b>North Reference:</b>             | True                            |
| <b>Wellbore:</b> | OH                      | <b>Survey Calculation Method:</b>   | Minimum Curvature               |
| <b>Design:</b>   | OH                      | <b>Database:</b>                    | EDM 5000.15 Single User Db      |

| Survey                                                           |                 |             |                       |              |              |                         |                         |                        |                       |  |
|------------------------------------------------------------------|-----------------|-------------|-----------------------|--------------|--------------|-------------------------|-------------------------|------------------------|-----------------------|--|
| Measured Depth (usft)                                            | Inclination (°) | Azimuth (°) | Vertical Depth (usft) | +N/-S (usft) | +E/-W (usft) | Vertical Section (usft) | Dogleg Rate (°/100usft) | Build Rate (°/100usft) | Turn Rate (°/100usft) |  |
| 11,762.00                                                        | 90.35           | 356.94      | 7,751.26              | 2,969.51     | 1,629.09     | 2,943.55                | 0.59                    | -0.35                  | -0.47                 |  |
| 11,856.00                                                        | 90.95           | 356.82      | 7,750.19              | 3,063.36     | 1,623.97     | 3,037.48                | 0.65                    | 0.64                   | -0.13                 |  |
| 11,949.00                                                        | 90.09           | 358.63      | 7,749.35              | 3,156.28     | 1,620.28     | 3,130.44                | 2.15                    | -0.92                  | 1.95                  |  |
| 12,041.00                                                        | 90.60           | 358.39      | 7,748.79              | 3,248.25     | 1,617.89     | 3,222.44                | 0.61                    | 0.55                   | -0.26                 |  |
| 12,134.00                                                        | 90.94           | 358.69      | 7,747.55              | 3,341.21     | 1,615.52     | 3,315.42                | 0.49                    | 0.37                   | 0.32                  |  |
| 12,228.00                                                        | 89.24           | 0.58        | 7,747.40              | 3,435.20     | 1,614.92     | 3,409.41                | 2.70                    | -1.81                  | 2.01                  |  |
| 12,322.00                                                        | 89.53           | 0.53        | 7,748.41              | 3,529.19     | 1,615.83     | 3,503.37                | 0.31                    | 0.31                   | -0.05                 |  |
| 12,415.00                                                        | 89.73           | 0.76        | 7,749.01              | 3,622.18     | 1,616.88     | 3,596.34                | 0.33                    | 0.22                   | 0.25                  |  |
| 12,509.00                                                        | 89.98           | 1.12        | 7,749.24              | 3,716.17     | 1,618.42     | 3,690.29                | 0.47                    | 0.27                   | 0.38                  |  |
| 12,604.00                                                        | 88.59           | 359.47      | 7,750.43              | 3,811.15     | 1,618.91     | 3,785.26                | 2.27                    | -1.46                  | -1.74                 |  |
| 12,698.00                                                        | 89.11           | 359.53      | 7,752.32              | 3,905.13     | 1,618.09     | 3,879.23                | 0.56                    | 0.55                   | 0.06                  |  |
| 12,793.00                                                        | 89.55           | 0.17        | 7,753.43              | 4,000.12     | 1,617.84     | 3,974.22                | 0.82                    | 0.46                   | 0.67                  |  |
| 12,887.00                                                        | 90.15           | 0.33        | 7,753.67              | 4,094.12     | 1,618.25     | 4,068.20                | 0.66                    | 0.64                   | 0.17                  |  |
| 12,981.00                                                        | 88.57           | 358.39      | 7,754.72              | 4,188.10     | 1,617.20     | 4,162.19                | 2.66                    | -1.68                  | -2.06                 |  |
| 13,074.00                                                        | 89.21           | 358.50      | 7,756.53              | 4,281.05     | 1,614.68     | 4,255.16                | 0.70                    | 0.69                   | 0.12                  |  |
| 13,169.00                                                        | 89.76           | 358.46      | 7,757.38              | 4,376.01     | 1,612.16     | 4,350.15                | 0.58                    | 0.58                   | -0.04                 |  |
| 13,264.00                                                        | 90.51           | 357.92      | 7,757.16              | 4,470.97     | 1,609.16     | 4,445.14                | 0.97                    | 0.79                   | -0.57                 |  |
| 13,357.90                                                        | 89.73           | 357.43      | 7,756.96              | 4,564.79     | 1,605.35     | 4,539.01                | 0.98                    | -0.83                  | -0.52                 |  |
| Enter Toe Box: 13357.90' MD 460' FNL, 602' FEL                   |                 |             |                       |              |              |                         |                         |                        |                       |  |
| 13,358.00                                                        | 89.73           | 357.43      | 7,756.96              | 4,564.89     | 1,605.34     | 4,539.11                | 0.98                    | -0.83                  | -0.52                 |  |
| 13,452.00                                                        | 89.52           | 357.40      | 7,757.57              | 4,658.79     | 1,601.10     | 4,633.07                | 0.23                    | -0.22                  | -0.03                 |  |
| 13,545.00                                                        | 89.31           | 357.56      | 7,758.52              | 4,751.69     | 1,597.01     | 4,726.02                | 0.28                    | -0.23                  | 0.17                  |  |
| 13,640.00                                                        | 89.63           | 356.95      | 7,759.40              | 4,846.58     | 1,592.46     | 4,820.97                | 0.73                    | 0.34                   | -0.64                 |  |
| 13,689.00                                                        | 89.77           | 357.21      | 7,759.66              | 4,895.52     | 1,589.97     | 4,869.94                | 0.60                    | 0.29                   | 0.53                  |  |
| 13,744.00                                                        | 89.77           | 357.21      | 7,759.88              | 4,950.45     | 1,587.29     | 4,924.91                | 0.00                    | 0.00                   | 0.00                  |  |
| BHL: 73' FNL, 677' FEL Sec 21 T1N R68W - PBHL (Windsock 21-10HZ) |                 |             |                       |              |              |                         |                         |                        |                       |  |



|                  |                         |                                     |                                 |
|------------------|-------------------------|-------------------------------------|---------------------------------|
| <b>Company:</b>  | ANADARKO PETROLEUM CORP | <b>Local Co-ordinate Reference:</b> | Well Windsock 21-10HZ           |
| <b>Project:</b>  | WELD COUNTY (NAD 83)    | <b>TVD Reference:</b>               | 20' KB + 5222' GE @ 5242.00usft |
| <b>Site:</b>     | Windsock 15-21HZ        | <b>MD Reference:</b>                | 20' KB + 5222' GE @ 5242.00usft |
| <b>Well:</b>     | Windsock 21-10HZ        | <b>North Reference:</b>             | True                            |
| <b>Wellbore:</b> | OH                      | <b>Survey Calculation Method:</b>   | Minimum Curvature               |
| <b>Design:</b>   | OH                      | <b>Database:</b>                    | EDM 5000.15 Single User Db      |

| Design Targets                                                               |                  |                 |               |                 |                 |                    |                   |           |             |
|------------------------------------------------------------------------------|------------------|-----------------|---------------|-----------------|-----------------|--------------------|-------------------|-----------|-------------|
| Target Name<br>- hit/miss target<br>- Shape                                  | Dip Angle<br>(°) | Dip Dir.<br>(°) | TVD<br>(usft) | +N/-S<br>(usft) | +E/-W<br>(usft) | Northing<br>(usft) | Easting<br>(usft) | Latitude  | Longitude   |
| SHL: 274' FSL, 2280' FE<br>- actual wellpath hits target center<br>- Point   | 0.00             | 0.00            | 0.00          | 0.00            | 0.00            | 14,537,700.77      | 1,638,381.31      | 40.030118 | -105.007271 |
| Enter Land Box: 4697.12<br>- actual wellpath hits target center<br>- Point   | 0.00             | 0.00            | 4,341.57      | -824.19         | 1,401.63        | 14,536,876.80      | 1,639,782.31      | 40.027856 | -105.002266 |
| Curve KOP (Windsock 2<br>- actual wellpath hits target center<br>- Point     | 0.00             | 0.00            | 6,989.61      | -981.57         | 1,692.28        | 14,536,719.46      | 1,640,072.83      | 40.027423 | -105.001229 |
| Exit Heel Box: 8985.92' I<br>- actual wellpath hits target center<br>- Point | 0.00             | 0.00            | 7,745.45      | 195.04          | 1,676.78        | 14,537,895.60      | 1,640,057.43      | 40.030653 | -105.001284 |
| LP: 154' FSL, 605' FEL<br>- actual wellpath hits target center<br>- Point    | 0.00             | 0.00            | 7,750.88      | -110.82         | 1,675.05        | 14,537,589.86      | 1,640,055.68      | 40.029814 | -105.001290 |
| Enter Toe Box: 13357.90<br>- actual wellpath hits target center<br>- Point   | 0.00             | 0.00            | 7,756.96      | 4,564.79        | 1,605.35        | 14,542,263.60      | 1,639,986.39      | 40.042649 | -105.001538 |
| BHL: 73' FNL, 677' FEL<br>- actual wellpath hits target center<br>- Point    | 0.00             | 0.00            | 7,759.88      | 4,950.45        | 1,587.29        | 14,542,649.11      | 1,639,968.37      | 40.043707 | -105.001602 |

| Casing Points               |                             |        |  |                           |                         |
|-----------------------------|-----------------------------|--------|--|---------------------------|-------------------------|
| Measured<br>Depth<br>(usft) | Vertical<br>Depth<br>(usft) | Name   |  | Casing<br>Diameter<br>(") | Hole<br>Diameter<br>(") |
| 1,859.00                    | 1,810.18                    | 9 5/8" |  | 9-5/8                     | 12-1/4                  |

|                   |                    |             |
|-------------------|--------------------|-------------|
| Checked By: _____ | Approved By: _____ | Date: _____ |
|-------------------|--------------------|-------------|