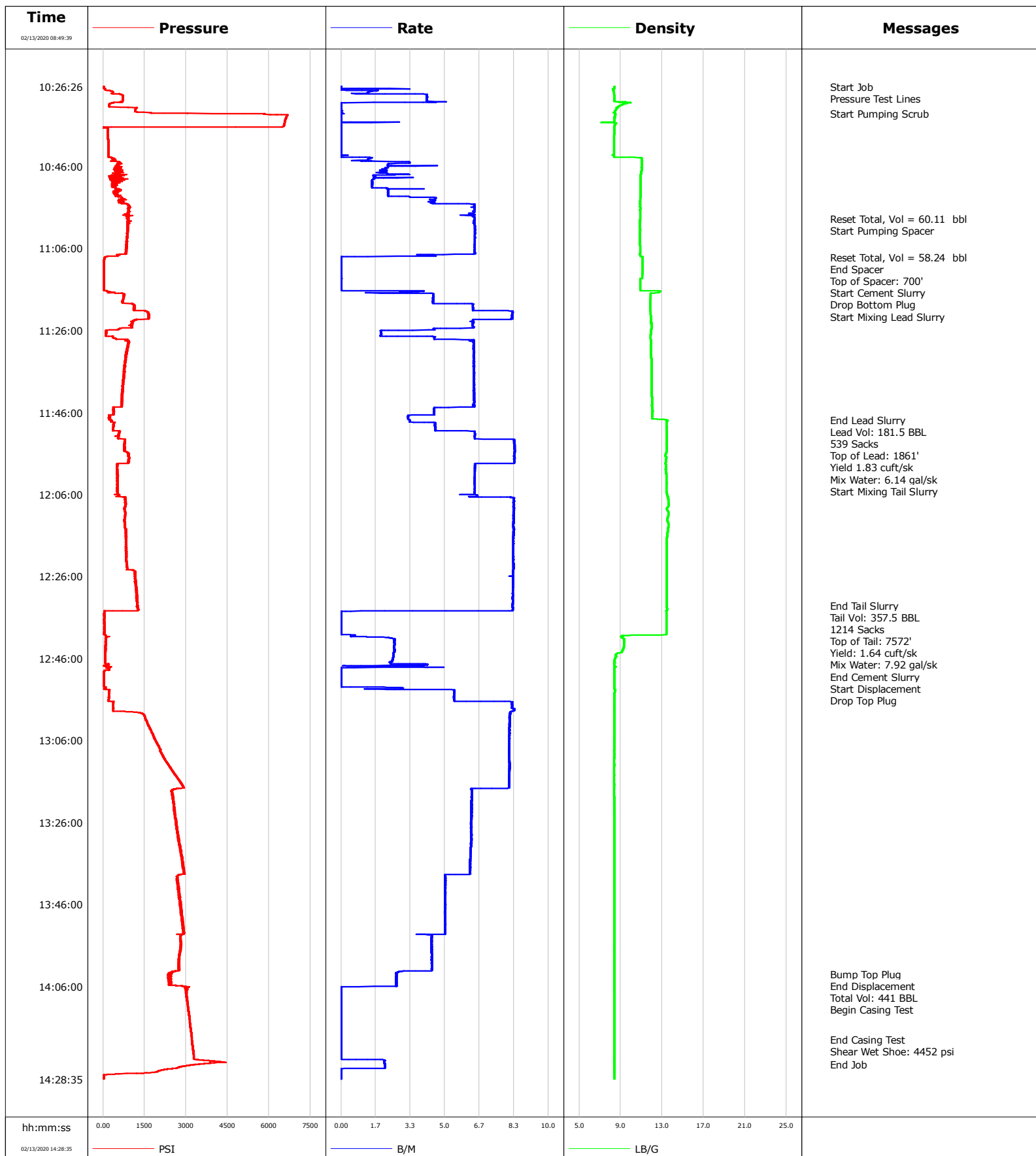


**Well** Windsock 21-2HZ  
**Field** Denver/Cheyenne  
**Engineer** Tyler Devillier  
**Country** United States

**Client** APC  
**SIR No.** EAJ7-01243  
**Job Type** 5.5" Production  
**Job Date** 02-13-2020



				Customer APC			Job Number EAJ7-01243				
Well Windsock 21-2HZ			Location (legal) PD461			Schlumberger Location Cheyenne			Job Start Feb/13/2020		
Field Denver/Cheyenne		Formation Name/Type		Deviation deg		Bit Size in		Well MD 19017.0 ft		Well TVD 7418.0 ft	
County Weld		State/Province Colorado		BHP psi		BHST 230 degF		BHCT 230 degF		Pore Press. Gradient lb/gal	
Well Master 0065959426		API/UWI 05-123-50631-00-00									
Rig Name PD 461		Drilled For Oil and Gas		Service Via Land		Casing/Liner					
						Depth, ft		Size, in		Weight, lb/ft	
Offshore Zone		Well Class New		Well Type Development		1896.0		9.6		36.0	
						19006.0		5.5		17.0	
Drilling Fluid Type		Max. Density lb/gal		Plastic Viscosity cP		Tubing/Drill Pipe					
						T/D		Depth, ft		Size, in	
Service Line Cementing		Job Type 5.5" Production									
Max. Allowed Tub. Press psi		Max. Allowed Ann. Press psi		WH Connection Double Cement Head		Perforations/Open Hole					
						Top, ft		Bottom, ft		shot/ft	
										No. of Shots	
										Total Interval ft	
										Diameter in	
						Treat Down		Displacement bbl		Packer Type None	
										Packer Depth ft	
						Tubing Vol. bbl		Casing Vol. bbl		Annular Vol. bbl	
										Openhole Vol. bbl	
Casing/Tubing Secured <input type="checkbox"/>		1 Hole Vol. Circulated prior to Cement <input type="checkbox"/>				Casing Tools			Squeeze Job		
Lift Pressure 2470 psi						Shoe Type Float			Squeeze Type		
Pipe Rotated <input type="checkbox"/>		Pipe Reciprocated <input type="checkbox"/>				Shoe Depth 19006.0 ft			Tool Type		
No. Centralizers		Top Plugs 1		Bottom Plugs 1		Stage Tool Type			Tool Depth ft		
Cement Head Type Double						Stage Tool Depth ft			Tail Pipe Size in		
Job Scheduled For Feb/13/2020 04:30		Arrived on Location Feb/13/2020 06:00		Leave Location Feb/13/2020 15:30		Collar Type Float			Tail Pipe Depth ft		
						Collar Depth 18996.0 ft			Sqz. Total Vol. bbl		
Date	Time 24-hr clock	Treating Pressure PSI		Flow Rate B/M		Density LB/G		Message			
02/13/2020	10:26:31	19		0.0		8.38		Start Job			
02/13/2020	10:27:00	21		0.0		8.38		Pressure Test Lines			
02/13/2020	10:27:01	59		0.9		8.38					
02/13/2020	10:27:31	252		1.8		8.29					
02/13/2020	10:28:01	360		1.3		8.36					
02/13/2020	10:28:31	678		4.1		8.38					
02/13/2020	10:29:01	711		4.2		8.38					
02/13/2020	10:29:31	708		4.1		8.38					
02/13/2020	10:30:01	714		4.1		8.38					
02/13/2020	10:30:31	345		0.0		9.67					
02/13/2020	10:31:01	224		0.0		9.07					
02/13/2020	10:31:31	635		0.0		8.75					
02/13/2020	10:32:31	1150		0.0		8.43					
02/13/2020	10:33:00	3049		0.1		8.44		Start Pumping Scrub			
02/13/2020	10:33:01	3050		0.1		8.40					
02/13/2020	10:33:31	6659		0.0		8.45					
02/13/2020	10:34:01	6619		0.0		8.43					
02/13/2020	10:34:31	6594		0.0		8.41					
02/13/2020	10:35:01	6573		0.0		8.39					
02/13/2020	10:35:31	6554		0.0		8.46					
02/13/2020	10:36:01	6537		0.0		8.40					

Well Windsock 21-2HZ			Field Denver/Cheyenne		Job Start Feb/13/2020	Customer APC	Job Number EAJ7-01243
Date	Time 24-hr clock	Treating Pressure PSI	Flow Rate B/M	Density LB/G	Message		
02/13/2020	10:37:01	163	0.0	8.39			
02/13/2020	10:37:31	164	0.0	8.39			
02/13/2020	10:38:01	169	0.0	8.38			
02/13/2020	10:38:31	173	0.0	8.38			
02/13/2020	10:39:01	177	0.0	8.38			
02/13/2020	10:39:31	179	0.0	8.38			
02/13/2020	10:40:01	182	0.0	8.38			
02/13/2020	10:40:31	185	0.0	8.38			
02/13/2020	10:41:01	186	0.0	8.38			
02/13/2020	10:41:31	187	0.0	8.38			
02/13/2020	10:42:01	189	0.0	8.38			
02/13/2020	10:42:31	190	0.0	8.38			
02/13/2020	10:43:01	189	0.0	8.38			
02/13/2020	10:43:31	190	0.0	8.38			
02/13/2020	10:44:01	414	1.4	11.00			
02/13/2020	10:44:31	323	0.9	11.00			
02/13/2020	10:45:01	643	3.3	11.01			
02/13/2020	10:45:31	498	2.2	11.00			
02/13/2020	10:46:01	553	2.3	11.00			
02/13/2020	10:46:31	550	2.2	11.00			
02/13/2020	10:47:01	637	2.1	11.00			
02/13/2020	10:47:31	648	1.9	10.97			
02/13/2020	10:48:01	536	2.6	10.94			
02/13/2020	10:48:31	649	1.6	10.94			
02/13/2020	10:49:01	367	1.6	10.93			
02/13/2020	10:49:31	325	1.5	10.93			
02/13/2020	10:50:01	463	1.5	10.93			
02/13/2020	10:50:31	496	1.5	10.93			
02/13/2020	10:51:01	431	1.5	10.93			
02/13/2020	10:51:31	565	2.4	10.93			
02/13/2020	10:52:01	480	2.3	10.93			
02/13/2020	10:52:31	473	2.3	10.93			
02/13/2020	10:53:01	541	2.3	10.93			
02/13/2020	10:53:31	659	4.3	10.93			
02/13/2020	10:54:01	565	4.3	10.88			
02/13/2020	10:54:31	680	4.4	10.86			
02/13/2020	10:55:01	675	4.4	10.86			
02/13/2020	10:55:31	937	6.4	10.87			
02/13/2020	10:56:01	938	6.4	10.90			
02/13/2020	10:56:31	923	6.4	10.89			
02/13/2020	10:57:01	944	6.4	10.89			
02/13/2020	10:57:31	880	6.3	10.88			
02/13/2020	10:58:01	916	6.4	10.87			
02/13/2020	10:58:31	877	6.4	10.86			
02/13/2020	10:58:45	899	6.4	10.86	Reset Total, Vol = 60.11 bbl		
02/13/2020	10:59:00	882	6.4	10.86	Start Pumping Spacer		
02/13/2020	10:59:01	918	6.4	10.86			
02/13/2020	10:59:31	883	6.4	10.85			
02/13/2020	11:00:01	897	6.5	10.84			
02/13/2020	11:00:31	890	6.5	10.84			
02/13/2020	11:01:01	909	6.4	10.85			
02/13/2020	11:01:31	886	6.4	10.86			
02/13/2020	11:02:01	900	6.5	10.86			
02/13/2020	11:02:31	883	6.5	10.85			

Well Windsock 21-2HZ			Field Denver/Cheyenne		Job Start Feb/13/2020	Customer APC	Job Number EAJ7-01243
Date	Time 24-hr clock	Treating Pressure PSI	Flow Rate B/M	Density LB/G	Message		
02/13/2020	11:03:31	879	6.5	10.85			
02/13/2020	11:04:01	842	6.4	10.85			
02/13/2020	11:04:31	867	6.5	10.85			
02/13/2020	11:05:01	884	6.4	10.85			
02/13/2020	11:05:31	833	6.4	10.87			
02/13/2020	11:06:01	857	6.4	10.88			
02/13/2020	11:06:31	832	6.4	10.88			
02/13/2020	11:07:01	836	6.5	10.88			
02/13/2020	11:07:31	623	3.8	10.87			
02/13/2020	11:08:01	126	0.0	11.13			
02/13/2020	11:08:04	107	0.0	11.12	Reset Total, Vol = 58.24 bbl		
02/13/2020	11:08:05	80	0.0	11.12	End Spacer		
02/13/2020	11:08:10	58	0.0	11.12	Top of Spacer: 700'		
02/13/2020	11:08:30	37	0.0	11.12	Start Cement Slurry		
02/13/2020	11:08:31	37	0.0	11.12			
02/13/2020	11:09:01	34	0.0	11.12			
02/13/2020	11:09:31	33	0.0	11.11			
02/13/2020	11:10:00	33	0.0	11.11	Drop Bottom Plug		
02/13/2020	11:10:01	32	0.0	11.11			
02/13/2020	11:10:31	33	0.0	11.11			
02/13/2020	11:11:00	31	0.0	11.11	Start Mixing Lead Slurry		
02/13/2020	11:11:01	31	0.0	11.10			
02/13/2020	11:11:31	32	0.0	11.10			
02/13/2020	11:12:01	32	0.0	11.09			
02/13/2020	11:12:31	31	0.0	11.10			
02/13/2020	11:13:31	31	0.0	10.87			
02/13/2020	11:14:01	32	0.0	10.87			
02/13/2020	11:14:31	32	0.0	10.87			
02/13/2020	11:15:01	32	0.0	10.87			
02/13/2020	11:15:31	31	0.0	10.87			
02/13/2020	11:16:01	31	0.0	10.87			
02/13/2020	11:16:31	196	3.8	12.81			
02/13/2020	11:17:01	736	4.4	11.89			
02/13/2020	11:17:31	751	4.4	11.89			
02/13/2020	11:18:01	746	4.4	11.89			
02/13/2020	11:18:31	730	4.4	11.84			
02/13/2020	11:19:01	716	4.4	11.82			
02/13/2020	11:19:31	1069	6.3	11.83			
02/13/2020	11:20:01	1132	6.3	11.82			
02/13/2020	11:20:31	1143	6.4	11.83			
02/13/2020	11:21:01	1099	6.4	11.84			
02/13/2020	11:21:31	1627	8.3	11.87			
02/13/2020	11:22:01	1633	8.2	11.88			
02/13/2020	11:22:31	1647	8.2	11.92			
02/13/2020	11:23:01	1655	8.2	11.93			
02/13/2020	11:23:31	1163	6.3	11.92			
02/13/2020	11:24:01	1081	6.3	11.95			
02/13/2020	11:24:31	1055	6.3	11.96			
02/13/2020	11:25:01	1025	6.4	11.98			
02/13/2020	11:25:31	605	4.5	11.97			
02/13/2020	11:26:01	115	1.9	11.93			
02/13/2020	11:26:31	108	1.9	11.92			
02/13/2020	11:27:01	105	1.9	11.91			
02/13/2020	11:27:31	354	4.4	11.89			

Well Windsock 21-2HZ			Field Denver/Cheyenne		Job Start Feb/13/2020	Customer APC	Job Number EAJ7-01243
Date	Time 24-hr clock	Treating Pressure PSI	Flow Rate B/M	Density LB/G	Message		
02/13/2020	11:28:31	950	6.4	11.91			
02/13/2020	11:29:01	943	6.4	11.92			
02/13/2020	11:29:31	909	6.4	11.92			
02/13/2020	11:30:01	890	6.4	11.93			
02/13/2020	11:30:31	876	6.4	11.93			
02/13/2020	11:31:01	871	6.4	11.94			
02/13/2020	11:31:31	879	6.4	11.94			
02/13/2020	11:32:01	822	6.4	11.94			
02/13/2020	11:32:31	815	6.4	11.95			
02/13/2020	11:33:01	825	6.4	11.96			
02/13/2020	11:33:31	793	6.4	11.96			
02/13/2020	11:34:01	792	6.4	11.96			
02/13/2020	11:34:31	774	6.4	11.96			
02/13/2020	11:35:01	776	6.4	11.96			
02/13/2020	11:35:31	787	6.4	11.96			
02/13/2020	11:36:01	750	6.4	11.97			
02/13/2020	11:36:31	780	6.4	11.97			
02/13/2020	11:37:01	747	6.4	11.97			
02/13/2020	11:37:31	728	6.4	11.97			
02/13/2020	11:38:01	756	6.4	11.96			
02/13/2020	11:38:31	729	6.4	11.96			
02/13/2020	11:39:01	727	6.4	11.96			
02/13/2020	11:39:31	712	6.4	11.96			
02/13/2020	11:40:01	711	6.4	11.97			
02/13/2020	11:40:31	724	6.4	11.99			
02/13/2020	11:41:01	724	6.4	11.99			
02/13/2020	11:41:31	704	6.4	11.99			
02/13/2020	11:42:01	698	6.4	12.00			
02/13/2020	11:42:31	674	6.4	12.01			
02/13/2020	11:43:01	707	6.4	12.02			
02/13/2020	11:43:31	688	6.4	12.03			
02/13/2020	11:44:01	682	6.4	12.03			
02/13/2020	11:44:31	666	6.4	12.02			
02/13/2020	11:45:01	383	4.5	12.00			
02/13/2020	11:45:31	386	4.5	12.06			
02/13/2020	11:46:01	400	4.5	12.05			
02/13/2020	11:46:31	365	4.5	12.05			
02/13/2020	11:47:01	240	3.2	12.03			
02/13/2020	11:47:31	247	3.2	12.02			
02/13/2020	11:47:46	283	3.3	13.29	End Lead Slurry		
02/13/2020	11:47:50	265	3.3	13.44	Lead Vol: 181.5 BBL		
02/13/2020	11:47:53	311	3.3	13.52	539 Sacks		
02/13/2020	11:47:55	317	3.3	13.54	Top of Lead: 1861'		
02/13/2020	11:47:57	320	3.3	13.52	Yield 1.83 cuft/sk		
02/13/2020	11:47:59	298	3.3	13.49	Mix Water: 6.14 gal/sk		
02/13/2020	11:48:00	273	3.3	13.48	Start Mixing Tail Slurry		
02/13/2020	11:48:31	395	4.5	13.42			
02/13/2020	11:49:01	376	4.5	13.40			
02/13/2020	11:49:31	381	4.5	13.44			
02/13/2020	11:50:01	366	4.5	13.43			
02/13/2020	11:50:31	589	6.1	13.47			
02/13/2020	11:51:01	566	6.4	13.47			
02/13/2020	11:51:31	575	6.5	13.46			
02/13/2020	11:52:01	574	6.4	13.46			

Well Windsock 21-2HZ			Field Denver/Cheyenne		Job Start Feb/13/2020	Customer APC	Job Number EAJ7-01243
Date	Time 24-hr clock	Treating Pressure PSI	Flow Rate B/M	Density LB/G	Message		
02/13/2020	11:53:01	793	8.3	13.44			
02/13/2020	11:53:31	797	8.3	13.44			
02/13/2020	11:54:01	779	8.4	13.43			
02/13/2020	11:54:31	792	8.4	13.45			
02/13/2020	11:55:01	789	8.4	13.46			
02/13/2020	11:55:31	815	8.4	13.44			
02/13/2020	11:56:01	907	8.3	13.36			
02/13/2020	11:56:31	917	8.4	13.30			
02/13/2020	11:57:01	932	8.4	13.42			
02/13/2020	11:57:31	937	8.3	13.35			
02/13/2020	11:58:01	935	8.4	13.36			
02/13/2020	11:58:31	541	6.5	13.30			
02/13/2020	11:59:01	521	6.5	13.37			
02/13/2020	11:59:31	512	6.5	13.34			
02/13/2020	12:00:01	512	6.5	13.37			
02/13/2020	12:00:31	527	6.5	13.35			
02/13/2020	12:01:01	499	6.4	13.38			
02/13/2020	12:01:31	514	6.4	13.42			
02/13/2020	12:02:01	532	6.4	13.41			
02/13/2020	12:02:31	511	6.5	13.41			
02/13/2020	12:03:01	512	6.4	13.40			
02/13/2020	12:03:31	514	6.4	13.43			
02/13/2020	12:04:01	506	6.4	13.41			
02/13/2020	12:04:31	540	6.4	13.40			
02/13/2020	12:05:01	525	6.4	13.41			
02/13/2020	12:05:31	533	6.4	13.44			
02/13/2020	12:06:01	546	5.7	13.48			
02/13/2020	12:06:31	600	6.6	13.53			
02/13/2020	12:07:01	819	8.3	13.58			
02/13/2020	12:07:31	835	8.3	13.60			
02/13/2020	12:08:01	815	8.3	13.61			
02/13/2020	12:08:31	791	8.3	13.62			
02/13/2020	12:09:01	799	8.3	13.58			
02/13/2020	12:09:31	764	8.3	13.45			
02/13/2020	12:10:01	777	8.3	13.54			
02/13/2020	12:10:31	801	8.3	13.59			
02/13/2020	12:11:01	793	8.3	13.59			
02/13/2020	12:11:31	789	8.3	13.55			
02/13/2020	12:12:01	784	8.3	13.50			
02/13/2020	12:12:31	796	8.3	13.52			
02/13/2020	12:13:01	786	8.3	13.58			
02/13/2020	12:13:31	799	8.3	13.59			
02/13/2020	12:14:01	792	8.3	13.58			
02/13/2020	12:14:31	828	8.3	13.56			
02/13/2020	12:15:01	823	8.3	13.53			
02/13/2020	12:15:31	820	8.3	13.52			
02/13/2020	12:16:01	825	8.3	13.49			
02/13/2020	12:16:31	832	8.3	13.47			
02/13/2020	12:17:01	823	8.3	13.46			
02/13/2020	12:17:31	851	8.3	13.46			
02/13/2020	12:18:01	829	8.3	13.46			
02/13/2020	12:18:31	828	8.3	13.46			
02/13/2020	12:19:01	841	8.3	13.46			
02/13/2020	12:19:31	837	8.3	13.45			

Well Windsock 21-2HZ			Field Denver/Cheyenne		Job Start Feb/13/2020	Customer APC	Job Number EAJ7-01243
Date	Time 24-hr clock	Treating Pressure PSI	Flow Rate B/M	Density LB/G	Message		
02/13/2020	12:20:31	843	8.3	13.45			
02/13/2020	12:21:01	853	8.3	13.45			
02/13/2020	12:21:31	825	8.3	13.45			
02/13/2020	12:22:01	843	8.3	13.46			
02/13/2020	12:22:31	851	8.3	13.46			
02/13/2020	12:23:31	853	8.3	13.46			
02/13/2020	12:24:01	877	8.3	13.46			
02/13/2020	12:24:31	1093	8.3	13.45			
02/13/2020	12:25:01	1155	8.3	13.45			
02/13/2020	12:25:31	1169	8.3	13.45			
02/13/2020	12:26:01	1171	8.3	13.46			
02/13/2020	12:26:31	1140	8.3	13.46			
02/13/2020	12:27:01	1157	8.3	13.46			
02/13/2020	12:27:31	1181	8.3	13.46			
02/13/2020	12:28:01	1162	8.3	13.46			
02/13/2020	12:28:31	1195	8.3	13.46			
02/13/2020	12:29:01	1209	8.3	13.47			
02/13/2020	12:29:31	1212	8.3	13.46			
02/13/2020	12:30:01	1218	8.3	13.46			
02/13/2020	12:30:31	1235	8.3	13.46			
02/13/2020	12:31:01	1224	8.3	13.47			
02/13/2020	12:31:31	1225	8.3	13.46			
02/13/2020	12:32:01	1221	8.3	13.46			
02/13/2020	12:32:31	1242	8.3	13.45			
02/13/2020	12:33:00	1222	8.3	13.46	End Tail Slurry		
02/13/2020	12:33:01	1225	8.3	13.46			
02/13/2020	12:33:05	1259	8.3	13.47	Tail Vol: 357.5 BBL		
02/13/2020	12:33:10	1248	8.3	13.47	1214 Sacks		
02/13/2020	12:33:15	1265	8.2	13.47	Top of Tail: 7572'		
02/13/2020	12:33:20	1258	8.2	13.47	Yield: 1.64 cuft/sk		
02/13/2020	12:33:30	1237	8.3	13.47	Mix Water: 7.92 gal/sk		
02/13/2020	12:33:31	1250	8.3	13.47			
02/13/2020	12:33:35	1248	8.3	13.47	End Cement Slurry		
02/13/2020	12:34:01	1302	8.3	13.50			
02/13/2020	12:34:31	37	0.0	13.40			
02/13/2020	12:35:01	36	0.0	13.40			
02/13/2020	12:35:31	36	0.0	13.39			
02/13/2020	12:36:01	37	0.0	13.39			
02/13/2020	12:36:31	35	0.0	13.39			
02/13/2020	12:37:01	36	0.0	13.39			
02/13/2020	12:37:31	36	0.0	13.39			
02/13/2020	12:38:01	36	0.0	13.39			
02/13/2020	12:38:31	36	0.0	13.39			
02/13/2020	12:39:01	35	0.0	13.39			
02/13/2020	12:39:31	36	0.0	13.39			
02/13/2020	12:40:01	35	0.0	13.39			
02/13/2020	12:40:31	90	0.5	9.06			
02/13/2020	12:41:01	98	2.4	9.15			
02/13/2020	12:41:31	91	2.6	9.34			
02/13/2020	12:42:01	90	2.6	9.34			
02/13/2020	12:42:31	90	2.6	9.32			
02/13/2020	12:43:01	90	2.6	9.31			
02/13/2020	12:43:31	90	2.6	9.26			
02/13/2020	12:44:01	89	2.6	9.19			

Well Windsock 21-2HZ			Field Denver/Cheyenne		Job Start Feb/13/2020	Customer APC	Job Number EAJ7-01243
Date	Time 24-hr clock	Treating Pressure PSI	Flow Rate B/M	Density LB/G	Message		
02/13/2020	12:45:01	83	2.5	8.54			
02/13/2020	12:45:31	85	2.5	8.58			
02/13/2020	12:46:01	84	2.5	8.46			
02/13/2020	12:46:31	82	2.5	8.41			
02/13/2020	12:47:01	81	2.3	8.38			
02/13/2020	12:47:31	200	4.2	8.39			
02/13/2020	12:48:01	244	3.7	8.53			
02/13/2020	12:48:31	227	0.0	8.39			
02/13/2020	12:49:01	43	0.0	8.39			
02/13/2020	12:49:31	29	0.0	8.39			
02/13/2020	12:50:00	27	0.0	8.39	Start Displacement		
02/13/2020	12:50:01	26	0.0	8.39			
02/13/2020	12:50:05	26	0.0	8.39	Drop Top Plug		
02/13/2020	12:50:31	25	0.0	8.39			
02/13/2020	12:51:01	24	0.0	8.39			
02/13/2020	12:51:31	24	0.0	8.39			
02/13/2020	12:52:01	25	0.0	8.39			
02/13/2020	12:52:31	24	0.0	8.39			
02/13/2020	12:53:01	90	2.1	8.40			
02/13/2020	12:53:31	74	2.2	8.42			
02/13/2020	12:54:01	226	5.5	8.43			
02/13/2020	12:54:31	212	5.4	8.42			
02/13/2020	12:55:01	213	5.4	8.41			
02/13/2020	12:55:31	212	5.4	8.41			
02/13/2020	12:56:01	207	5.4	8.40			
02/13/2020	12:56:31	372	8.1	8.41			
02/13/2020	12:57:01	374	8.2	8.40			
02/13/2020	12:57:31	372	8.2	8.39			
02/13/2020	12:58:31	367	8.3	8.39			
02/13/2020	12:59:01	965	8.2	8.39			
02/13/2020	12:59:31	1434	8.1	8.39			
02/13/2020	13:00:01	1499	8.1	8.39			
02/13/2020	13:00:31	1520	8.1	8.38			
02/13/2020	13:01:01	1559	8.1	8.39			
02/13/2020	13:01:31	1585	8.1	8.38			
02/13/2020	13:02:01	1623	8.1	8.38			
02/13/2020	13:02:31	1653	8.1	8.38			
02/13/2020	13:03:01	1678	8.1	8.38			
02/13/2020	13:03:31	1715	8.1	8.38			
02/13/2020	13:04:01	1766	8.1	8.38			
02/13/2020	13:04:31	1792	8.1	8.38			
02/13/2020	13:05:01	1829	8.1	8.38			
02/13/2020	13:05:31	1866	8.1	8.38			
02/13/2020	13:06:01	1900	8.1	8.38			
02/13/2020	13:06:31	1936	8.1	8.38			
02/13/2020	13:07:01	1979	8.1	8.38			
02/13/2020	13:07:31	2016	8.1	8.38			
02/13/2020	13:08:01	2050	8.1	8.38			
02/13/2020	13:08:31	2056	8.1	8.38			
02/13/2020	13:09:01	2099	8.1	8.38			
02/13/2020	13:09:31	2152	8.1	8.38			
02/13/2020	13:10:01	2185	8.1	8.38			
02/13/2020	13:10:31	2229	8.1	8.38			
02/13/2020	13:11:01	2280	8.1	8.38			



Well Windsock 21-2HZ			Field Denver/Cheyenne		Job Start Feb/13/2020	Customer APC	Job Number EAJ7-01243
Date	Time 24-hr clock	Treating Pressure PSI	Flow Rate B/M	Density LB/G	Message		
02/13/2020	13:12:01	2362	8.1	8.38			
02/13/2020	13:12:31	2422	8.1	8.38			
02/13/2020	13:13:01	2465	8.1	8.38			
02/13/2020	13:13:31	2523	8.1	8.38			
02/13/2020	13:14:01	2580	8.1	8.38			
02/13/2020	13:14:31	2631	8.1	8.38			
02/13/2020	13:15:01	2675	8.1	8.38			
02/13/2020	13:15:31	2728	8.1	8.38			
02/13/2020	13:16:01	2781	8.1	8.38			
02/13/2020	13:16:31	2819	8.1	8.38			
02/13/2020	13:17:01	2877	8.1	8.38			
02/13/2020	13:17:31	2928	8.1	8.38			
02/13/2020	13:18:01	2534	6.3	8.38			
02/13/2020	13:18:31	2467	6.3	8.38			
02/13/2020	13:19:01	2495	6.3	8.38			
02/13/2020	13:19:31	2537	6.3	8.38			
02/13/2020	13:20:01	2541	6.3	8.38			
02/13/2020	13:20:31	2529	6.3	8.38			
02/13/2020	13:21:01	2562	6.3	8.38			
02/13/2020	13:21:31	2541	6.3	8.38			
02/13/2020	13:22:01	2585	6.3	8.38			
02/13/2020	13:22:31	2599	6.3	8.38			
02/13/2020	13:23:01	2571	6.3	8.38			
02/13/2020	13:23:31	2583	6.3	8.38			
02/13/2020	13:24:01	2604	6.3	8.38			
02/13/2020	13:24:31	2622	6.3	8.38			
02/13/2020	13:25:01	2641	6.3	8.38			
02/13/2020	13:25:31	2612	6.3	8.38			
02/13/2020	13:26:01	2632	6.3	8.38			
02/13/2020	13:26:31	2677	6.3	8.38			
02/13/2020	13:27:01	2664	6.3	8.38			
02/13/2020	13:27:31	2683	6.3	8.39			
02/13/2020	13:28:01	2673	6.3	8.38			
02/13/2020	13:28:31	2665	6.3	8.38			
02/13/2020	13:29:01	2729	6.3	8.38			
02/13/2020	13:29:31	2727	6.3	8.39			
02/13/2020	13:30:01	2720	6.3	8.39			
02/13/2020	13:30:31	2748	6.3	8.39			
02/13/2020	13:31:01	2744	6.3	8.39			
02/13/2020	13:31:31	2787	6.3	8.38			
02/13/2020	13:32:01	2798	6.3	8.39			
02/13/2020	13:32:31	2789	6.3	8.39			
02/13/2020	13:33:31	2832	6.2	8.39			
02/13/2020	13:34:01	2843	6.2	8.39			
02/13/2020	13:34:31	2877	6.2	8.38			
02/13/2020	13:35:01	2847	6.2	8.39			
02/13/2020	13:35:31	2858	6.2	8.39			
02/13/2020	13:36:01	2880	6.2	8.39			
02/13/2020	13:36:31	2902	6.2	8.39			
02/13/2020	13:37:01	2924	6.2	8.39			
02/13/2020	13:37:31	2898	6.2	8.39			
02/13/2020	13:38:01	2911	6.2	8.38			
02/13/2020	13:38:31	2955	6.2	8.38			
02/13/2020	13:39:01	2698	5.0	8.38			

Well Windsock 21-2HZ			Field Denver/Cheyenne		Job Start Feb/13/2020	Customer APC	Job Number EAJ7-01243
Date	Time 24-hr clock	Treating Pressure PSI	Flow Rate B/M	Density LB/G	Message		
02/13/2020	13:40:01	2691	5.0	8.39			
02/13/2020	13:40:31	2663	5.0	8.39			
02/13/2020	13:41:01	2680	5.0	8.39			
02/13/2020	13:41:31	2700	5.0	8.39			
02/13/2020	13:42:01	2724	5.0	8.39			
02/13/2020	13:42:31	2737	5.0	8.39			
02/13/2020	13:43:01	2757	5.0	8.39			
02/13/2020	13:43:31	2773	5.0	8.38			
02/13/2020	13:44:01	2752	5.0	8.39			
02/13/2020	13:44:31	2759	5.0	8.38			
02/13/2020	13:45:01	2760	5.0	8.38			
02/13/2020	13:45:31	2768	5.0	8.38			
02/13/2020	13:46:01	2762	5.0	8.38			
02/13/2020	13:46:31	2782	5.0	8.38			
02/13/2020	13:47:01	2807	5.0	8.38			
02/13/2020	13:47:31	2812	5.0	8.38			
02/13/2020	13:48:01	2826	5.0	8.38			
02/13/2020	13:48:31	2852	5.0	8.38			
02/13/2020	13:49:01	2853	5.0	8.38			
02/13/2020	13:49:31	2859	5.0	8.38			
02/13/2020	13:50:01	2867	5.0	8.38			
02/13/2020	13:50:31	2857	5.0	8.38			
02/13/2020	13:51:01	2851	5.0	8.38			
02/13/2020	13:51:31	2888	5.0	8.38			
02/13/2020	13:52:01	2905	5.0	8.38			
02/13/2020	13:52:31	2908	5.0	8.38			
02/13/2020	13:53:01	2920	5.0	8.38			
02/13/2020	13:53:31	2821	4.4	8.38			
02/13/2020	13:54:01	2798	4.4	8.38			
02/13/2020	13:54:31	2811	4.3	8.38			
02/13/2020	13:55:01	2812	4.4	8.38			
02/13/2020	13:55:31	2810	4.4	8.38			
02/13/2020	13:56:01	2798	4.4	8.38			
02/13/2020	13:56:31	2817	4.4	8.38			
02/13/2020	13:57:01	2794	4.4	8.38			
02/13/2020	13:57:31	2793	4.4	8.38			
02/13/2020	13:58:01	2760	4.4	8.38			
02/13/2020	13:58:31	2741	4.4	8.38			
02/13/2020	13:59:01	2774	4.4	8.38			
02/13/2020	13:59:31	2732	4.4	8.38			
02/13/2020	14:00:01	2741	4.4	8.38			
02/13/2020	14:00:31	2747	4.4	8.38			
02/13/2020	14:01:01	2725	4.4	8.38			
02/13/2020	14:01:31	2768	4.4	8.38			
02/13/2020	14:02:01	2762	4.4	8.38			
02/13/2020	14:02:31	2503	2.8	8.38			
02/13/2020	14:03:00	2430	2.7	8.38	Bump Top Plug		
02/13/2020	14:03:01	2380	2.7	8.38			
02/13/2020	14:03:31	2425	2.7	8.38			
02/13/2020	14:04:00	2410	2.7	8.38	End Displacement		
02/13/2020	14:04:01	2354	2.7	8.38			
02/13/2020	14:04:03	2431	2.7	8.38	Total Vol: 441 BBL		
02/13/2020	14:04:31	2435	2.7	8.38			
02/13/2020	14:05:01	2367	2.7	8.38			

Well Windsock 21-2HZ			Field Denver/Cheyenne		Job Start Feb/13/2020	Customer APC	Job Number EAJ7-01243
Date	Time 24-hr clock	Treating Pressure PSI	Flow Rate B/M	Density LB/G	Message		
02/13/2020	14:06:01	2948	1.6	8.38			
02/13/2020	14:06:31	3007	0.0	8.38			
02/13/2020	14:07:01	2999	0.0	8.38			
02/13/2020	14:07:31	2994	0.0	8.38			
02/13/2020	14:08:01	3004	0.0	8.38			
02/13/2020	14:08:31	3018	0.0	8.38			
02/13/2020	14:09:00	3041	0.0	8.38	Begin Casing Test		
02/13/2020	14:09:01	3035	0.0	8.38			
02/13/2020	14:09:31	3048	0.0	8.38			
02/13/2020	14:10:01	3043	0.0	8.38			
02/13/2020	14:10:31	3058	0.0	8.38			
02/13/2020	14:11:01	3072	0.0	8.38			
02/13/2020	14:11:31	3081	0.0	8.38			
02/13/2020	14:12:01	3089	0.0	8.38			
02/13/2020	14:12:31	3096	0.0	8.38			
02/13/2020	14:13:01	3107	0.0	8.38			
02/13/2020	14:13:31	3116	0.0	8.38			
02/13/2020	14:14:01	3125	0.0	8.38			
02/13/2020	14:14:31	3134	0.0	8.38			
02/13/2020	14:15:01	3143	0.0	8.38			
02/13/2020	14:15:31	3152	0.0	8.38			
02/13/2020	14:16:01	3160	0.0	8.38			
02/13/2020	14:16:31	3169	0.0	8.38			
02/13/2020	14:17:01	3177	0.0	8.38			
02/13/2020	14:17:31	3186	0.0	8.38			
02/13/2020	14:18:01	3194	0.0	8.38			
02/13/2020	14:18:31	3202	0.0	8.38			
02/13/2020	14:19:00	3211	0.0	8.38	End Casing Test		
02/13/2020	14:19:01	3211	0.0	8.38			
02/13/2020	14:19:31	3219	0.0	8.38			
02/13/2020	14:20:00	3227	0.0	8.38	Shear Wet Shoe: 4452 psi		
02/13/2020	14:20:01	3227	0.0	8.38			
02/13/2020	14:20:31	3235	0.0	8.38			
02/13/2020	14:21:01	3244	0.0	8.38			
02/13/2020	14:21:31	3251	0.0	8.38			
02/13/2020	14:22:01	3259	0.0	8.38			
02/13/2020	14:23:01	3276	0.0	8.38			
02/13/2020	14:23:31	3284	0.0	8.38			
02/13/2020	14:24:01	3673	2.1	8.39			
02/13/2020	14:24:31	4068	2.1	8.38			

<b>Well</b> Windsock 21-2HZ	<b>Field</b> Denver/Cheyenne	<b>Job Start</b> Feb/13/2020	<b>Customer</b> APC	<b>Job Number</b> EAJ7-01243
--------------------------------	---------------------------------	---------------------------------	------------------------	---------------------------------

Post Job Summary

Average Pump Rates, bbl/min					Volume of Fluid Injected, bbl						
Slurry	N2		Mud	Maximum Rate		Total Slurry 539.0	Mud	Spacer 118.2	N2		
Treating Pressure Summary, psi					Breakdown Fluid						
Maximum	Final 0	Average	Bump Plug to 3277	Breakdown		Type		Volume bbl	Density lb/gal		
Avg. N2 Percent %		Designed Slurry Volume 532.0 bbl		Displacement 441.0 bbl		Mix Water Temp 68 degF		Cement Circulated to Surface?	<input checked="" type="checkbox"/>	Volume bbl	
								Washed Thru Perfs		<input type="checkbox"/>	To ft
Customer or Authorized Representative				Schlumberger Supervisor				Circulation Lost	<input type="checkbox"/>	Job Completed	<input checked="" type="checkbox"/>
Joe Wallem								-			