



Magnum Cementing Services LLC LLC
600 17th Street, Ste 2800S
Denver, Colorado 80202

Field Ticket

Job Date: March 18, 2020
Job Number: JOB00083335

Bill To:
PDC Energy
PO Box 26

Bridgeport, West Virginia
26330

UWI: SESW, Sec24, 4N, 67W
Surface: SESW, Sec24, 4N, 67W
Pricing Area: Area 1
Competitive: STDU
Depth: 2552
Job Type: Balanced Plug

	Units	Per	Unit Price	Cost
Services and Equipment				
PCMP Unit Travel	70.	MI		
PCMP - Remedial Set Up (6 Hr min)	2,552.	FT		
Equipment				
MDAC	1.	Job		
Communication Headsets	2.	UNIT		
Material Handling & Delivery				
Bulk Material Blending	464.6	SKS		
Bulk Material Delivery	32,522.	SKMI		
Products & Materials				
MAG S 14.1	416.	SKS		
MCFL-1	144.77	LB		
MCFR-2	180.96	LB		
MCDF-P	36.19	LB		
MCDF-L	4.	GAL		

Customer Stamp:

SERVICES PROVIDED BY MAGNUM CEMENTING SERVICES
LTD., ARE GOVERNED BY AND SUBJECT TO THE ATTACHED
TERMS AND CONDITIONS

Received By: Hector Terrazas 970-506-9272
Comments:

US Treatment Report



Customer: PDC Energy
Rep: Hector Terrazas
Supervisor: Stephen Cardos
Job Type: US Remedial
 Balanced Plug

Ria: Ranger 5531
Well: PDC JOHNSTON 1
UWI: SESW, Sec24, 4N, 67W
Surface: SESW, Sec24, 4N, 67W

Job #: JOB00083335
Job Date: 43908
Time Requested: 8:30
Time Arrived: 8:00
Time Released: 12:30

416 sk MAG S 14.1 + 0.40% MCFL-1 + 0.50% MCFR-2 + 0.10% MCDP-P

Yield: 1.28 ft³/sk = 94.83bbls Mix Water: 5.89 gal/sk = 2450.24gal

Casing 1 Casing Size (in)	8.625	Casing 1 Weight (lb/ft)	24	Casing 2 Casing Size (in)	4.5
Casing 2 Grade	TBD	Casing 2 Weight (lb/ft)	11.6	Hole Size (in)	10"
Max Pressure (psi)	1500	Mud Density (lb/gal)	8.4	Mud Type	WBM
TMD (ft)	2552	Tubing (in)	2.375	Tubing Grade	TBD
Tubing Length (ft)	2552	Tubing WT (lb/ft)	4.7	TVD (ft)	2552

Treatment Info: Sacks Used: 0 Sacks Not Used: 0

Preflush: 13bbls Fresh Water

Circulation Time:
 Slurry Temp: 68 Bulk Sample: Yes
 Water Temp: 68 Water Sample: Yes
 Bulk Temp: 60 Slurry Sample: Yes
 Pump Out Lines: No Float Held:

Slurry Returns: 1 Plug Bumped:

Displace: 7bbls Fresh Water

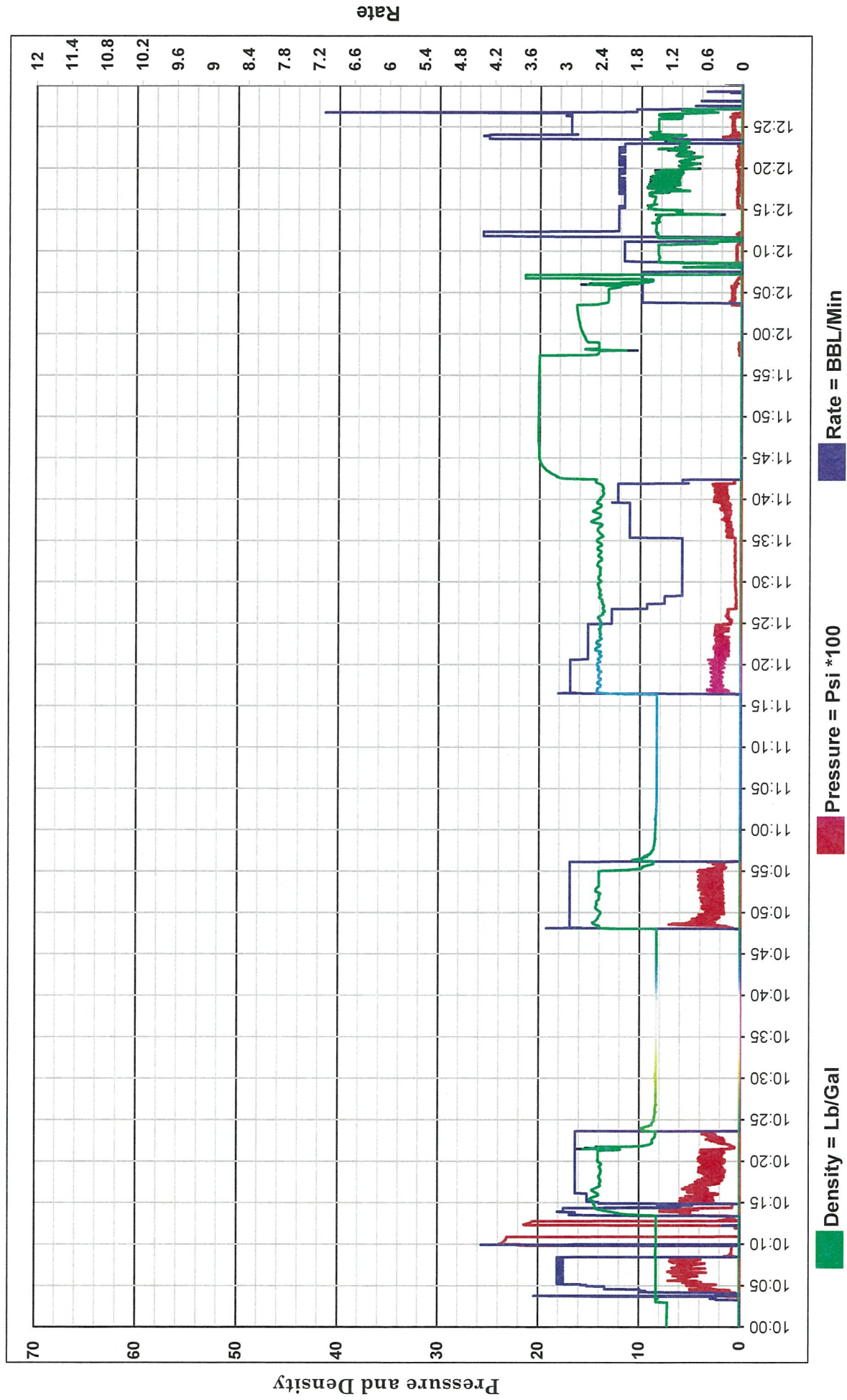
Time	Pressure psi	Annular Pressure psi	Volume Per Stage bbls	Total Stage Volume bbls	Rate bbls/min	Treatment Detail
08:00	0.00					Arrive on Location - ARRIVED AT 8:00 REQUESTED OL IS AT 8:30
10:08	0.00					Safety Meeting - DISCUSS JOB OUTLINE AND SAFETY
10:12	570.00		13		3	LOAD LINES
10:19	2,400.00					Start Pressure Test - PRESSURE TEST
10:22	500.00		20.5		3	Pump Slurry - PUMP 14.1 # CEMENT
10:31	134.00		7		3	Displace - DISPLACE
10:36	210.00		3		3	Displace - DISPLACE
10:36	0.00					Open Valve to Balance Plug - DOWN&BALANCE
10:57	350.00		19.5		3	Pump Slurry - PUMP 14.1# CEMENT
11:06	0.00					Open Valve to Balance Plug - OPEN&BALANCE
11:23	250.00		53		3	Pump Slurry - PUMP 14.1# CEMENT
11:55	0.00					SHUT DOWN&PULL PIPE
12:06	20.00		2		2	Pump Slurry - TOP OFF WELL
12:20	0.00					Wash Up Truck - WASH UP PUMP
12:30	0.00					De-Mobilization - RIG OUT


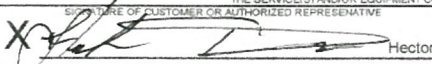
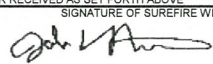


Customer: PDC Energy
Date: March 18, 2020
Ticket: 83335

Well Name: JOHNSTON 1
UWI: GILLCREST
Job Type: PLUG

Unit
1015



	CUSTOMER P. O. NUMBER		SERVICE ORDER 4038		PAGE 1 of 1	
	DATE 3/17/2020					
SureFire Wireline You are hereby requested to perform or attempt to perform the following service(s) or furnish the following equipment:						
SERVICE(S) AND/OR EQUIPMENT REQUESTED						
CUSTOMER	COMPANY	PDC Energy, Inc				
FURNISHED	LEASE	Johnston	WELL NUMBER	1		
LEASE/WELL	API	05-123-13652				
INFORMATION	FIELD	Wattenberg	PARISH/COUNTY	Weld	STATE	Colorado
THE UNDERSIGNED, HEREINAFTER REFERRED TO AS CUSTOMER AGREES TO PAY YOU FOR THE ABOVE SPECIFIED SERVICE(S) (INCLUDING LEASED EQUIPMENT) AND ANY ADDITIONAL SERVICE(S) REQUESTED, AT THE FIELD OFFICE OF SUREFIRE WIRELINE WEST COLORADO LLC., IN ACCORDANCE WITH THE APPLICABLE PROVISIONS OF YOUR CURRENT PRICE SCHEDULE. IN CONSIDERATION OF THE PRICES AS ARE SET OUT IN YOUR CURRENT APPLICABLE PRICE SCHEDULE WE CHOOSE TO BE BOUND BY THE TERMS AND CONDITIONS SET OUT IN THE CURRENT PRICE SCHEDULE (ALSO PRINTED ON THE REVERSE SIDE HEREOF), INCLUDING THE ASSUMPTION BY US OF THE LIABILITIES AND RESPONSIBILITIES CONTAINED IN THE RESPONSIBILITIES HEREIN ASSUMED BY US. WHEN SIGNED BY AN AGENT ON BEHALF OF CUSTOMER, SAID AGENT REPRESENTS THAT HE HAS FULL AUTHORITY FROM HIS PRINCIPAL TO EXECUTE SAME, IN THE ABSENCE OF AUTHORITY, THE SIGNER AGREES THAT HE SHALL BE OBLIGATED HEREUNDER AS CUSTOMER.						
CUSTOMER NAME PDC Energy, Inc						
INVOICE MAILING ADDRESS			CITY	STATE	ZIP CODE	
SIGNATURE OF CUSTOMER OR AUTHORIZED REPRESENTATIVE						
X			Thank you for using SureFire Wireline!!		Total runs, all pages	3
THE ESTIMATED CHARGES AND DATA SHOWN ARE SUBJECT TO CORRECTION BY SUREFIRE WIRELINE WEST COLORADO ACCOUNTING						
UNIT NUMBER 804	OPERATION TYPE	DAYLIGHT	WELL TYPE	WORKOVER	ROUND TRIP MILEAGE	
	TRIP	FIRST	HOISTING TYPE	WORKOVER RIG		
WIRELINE DEPTH	MAX. WELLHEAD PRESSURE		PSI		BOTTOM HOLE PRESSURE: PSI	
Desc. NO.	PERF. INTERVAL	PLUG DEPTH	OPERATION	ITEM	QUAN.	UNIT PRICE
1			P - Packoff	each	1	
2		6888'	P - Plug or Retainer - setting (3rd party)	each	1	
3		6888'	P - Dump Bailer (2 sxs Cement)	per run	1	
4	Cut - 2500'		P - Jet Cutters (all)	each	1	
5						
6						
7						
8						
9						
10						
11						
12						
13						
14						
15						
16						
17						
18						
19						
20						
21						
22						
23						
24						
STANDARD PRICING						
Runs for this job						3
ESTIMATED TOTAL C						
THE SERVICE(S) AND/OR EQUIPMENT COVERED BY THIS SERVICE ORDER HAVE BEEN PERFORMED OR RECEIVED AS SET FORTH ABOVE SIGNATURE OF CUSTOMER OR AUTHORIZED REPRESENTATIVE:  Hector LOGS RECEIVED AT WELL: <input type="checkbox"/> CUST. INITIALS:  Meisner, Jacob						
Casing/Tubing Record			PERM. DEPTH DATUM			
SIZE	WEIGHT	TYPE	FROM	TO	GROUND LEVEL	ELEV.
		Casing 1				
		Casing 2				
		Tubing				
		Liner				
		Drill Pipe				
LOG MEAS. FROM			WHICH IS			ABOVE PERM DATUM
Fluid Type			Fluid Weight			Fluid Level
Water Based			8.345 lbs/gal			Variable feet
Bottom Hole Temperature			Degrees F			
SUREFIRE ENGINEER NAMES			WORK WITNESSED BY NAME			
Meisner, Jacob			Hector T.			
SUREFIRE OPERATORS						
Schneider, Kyle						
Kuntz, Shane						
Crew 5						
Crew 6						
REMARKS						
District doing job:						Kersey, CO
Line of Business:						Completions
Type of Job:						Vertical P and A
Class:						Vert. Domestic
District job is in:						Kersey, CO
AFE#:						
Engineer:						Meisner, Jacob
MSA#:						