

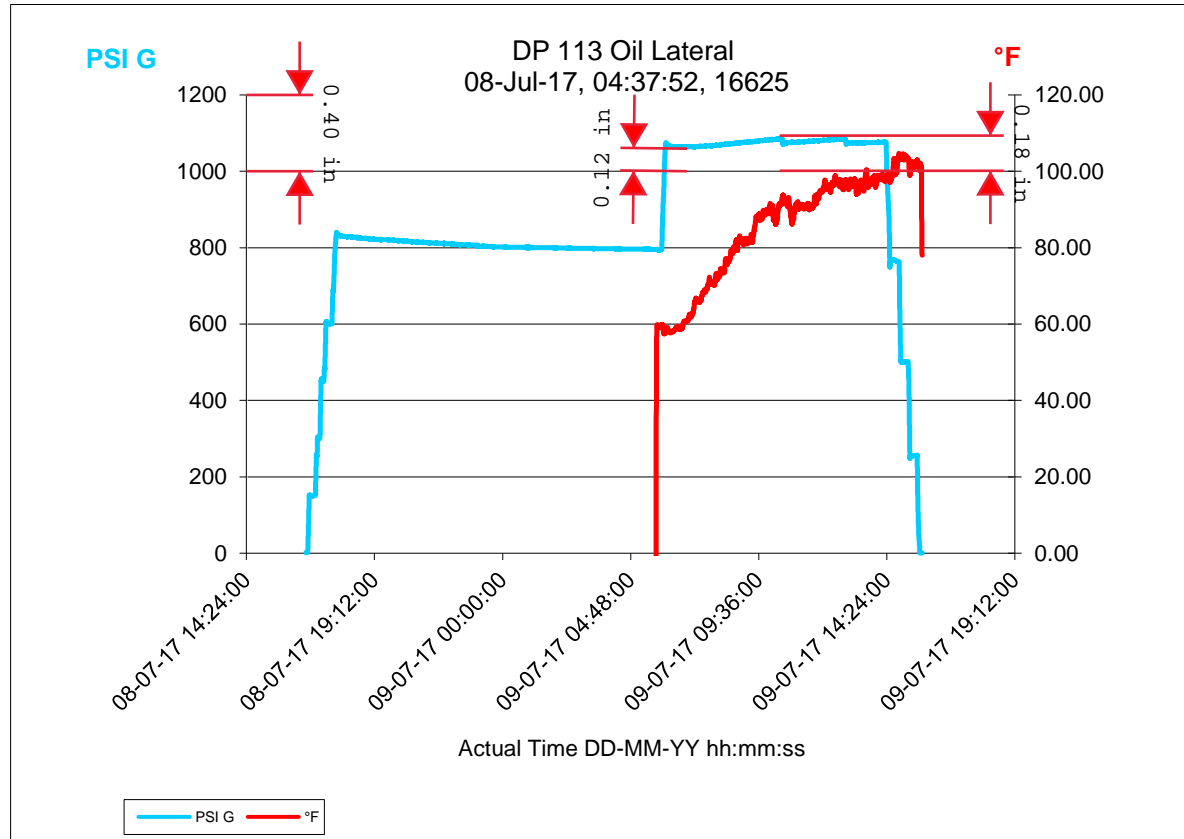
Data Collection Report

	Chassis	Left Scale	Right Scale
Serial Number	368121	460652	460799
Datatype		Lower	Upper
Units		PSI G	°F

Lower

Tested by Scott Zachary Test passed

Upper





7200 E. Dry Creek Rd, STE C-102, Centennial, CO 80112
Ph. 303-804-0667 Cal.Lab@Apex-Instruments.com

Calibration Certificate

#121

Certificate Number: 170989

Customer:

Silverline Services
Windsor, CO

Manufacturer: Crystal Engineering
Model Number: nVision 10,000 psi
Serial Number: 460652
Description: Pressure Module
Procedure: CRY_P_nVPM
Calibrated To: Manufacturer's Specifications
Technician: Steven Laupan

Calibration Date: 3/20/2017
Due Date: 3/20/2018
As Found: In Tolerance
As Left: In Tolerance
Temperature: 72 F
Humidity: 30 %

Tolerance Specs:

0 to 30% of FS: +/- 0.015% of FS
30% to 110% of FS +/- 0.05% of Rdg

Technician Notes:

As Left Userspan: 1.00000

Approved Signatory: 

Apex Instruments certifies that the instrument listed above meets the specifications of the manufacturer at the completion of its calibration. Standards used are traceable to the National Institute of Standards and Technology (NIST), or have been derived from accepted values, natural physical constants, or through the use of the ratio method of self-calibration techniques.

Methods used are in accordance with the procedure listed above. This calibration is a direct comparison of the unit under test to the listed reference standards and did not involve any sampling plans to complete. No allowance has been made for the instability of the test device due to use, time, etc. Such allowances would be made by the customer as needed.

This certificate does not guarantee the continued performance of the instrument listed above. Any modifications or services performed hereafter may void this certificate.

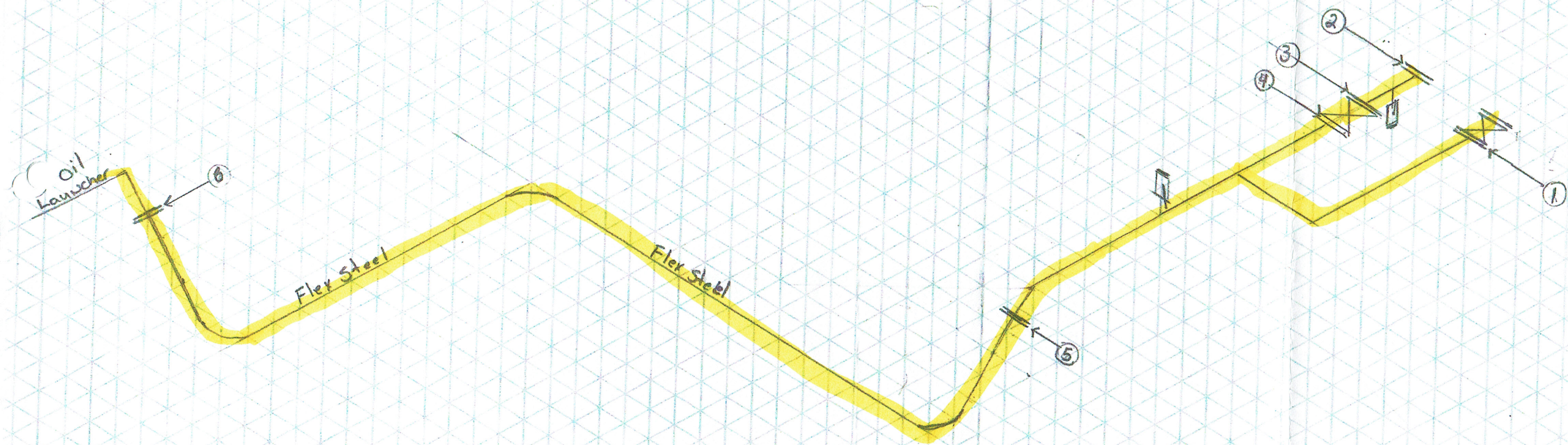
This certificate is not to be reproduced other than in full, except with prior written approval from Apex Instruments Inc.

Standards Used

Description	Model Number	Serial Number	Calibration Date	Due Date	ID
Electronic Deadweight Tester	RPM4-E-DWT A100M/A10M	1709	11/2/2016	11/2/2017	APX00024



APX01583



Oil line Piping from ESD valve to Launcher