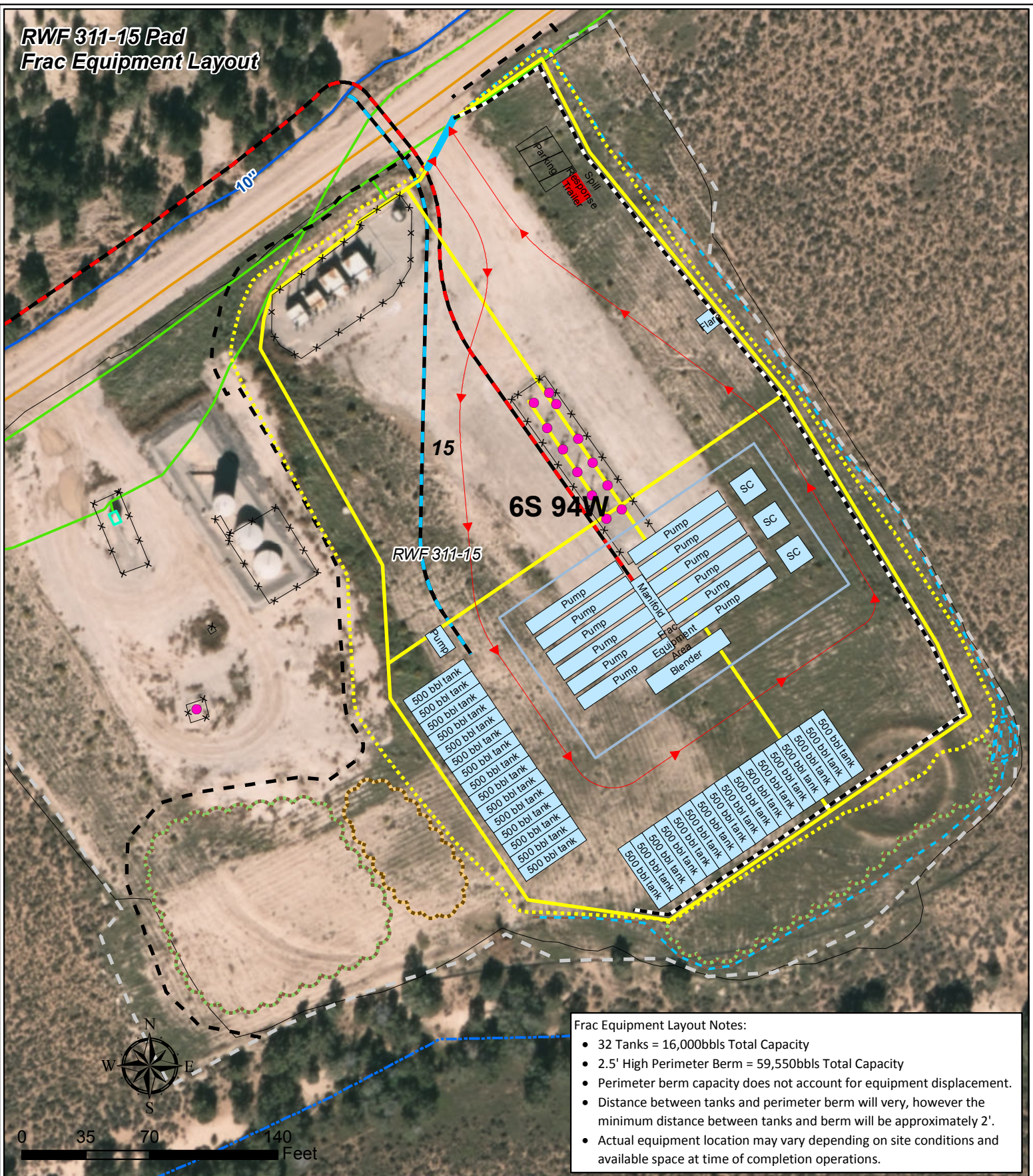


# RWF 311-15 Pad Frac Equipment Layout



- Frac Equipment Layout Notes:**
- 32 Tanks = 16,000bbls Total Capacity
  - 2.5' High Perimeter Berm = 59,550bbls Total Capacity
  - Perimeter berm capacity does not account for equipment displacement.
  - Distance between tanks and perimeter berm will vary, however the minimum distance between tanks and berm will be approximately 2'.
  - Actual equipment location may vary depending on site conditions and available space at time of completion operations.

## Legend

- |                                 |                                 |  |
|---------------------------------|---------------------------------|--|
| ● Production Gas Well           | ■ Proposed Excess Stockpile     | — Proposed Surface Frac Lines (5 - 4.5") |
| — Existing Gas Pipeline         | ■ Proposed Topsoil Stockpile    | — Proposed Surface Water Line (1-10")    |
| — Existing Water Pipeline       | × Existing Fence                | — Existing Road                          |
| — Propose Pad Edge              | — Existing Limit of Disturbance | ■ Frac Equipment                         |
| — Proposed Daylight Line        | — Stormwater Controls           | ■ Frac Equipment Area                    |
| — Proposed Limit of Disturbance | — Drainage                      | □ Parking                                |
| — Existing Production Equipment | — Proposed Berm (2.5' High)     | — Spill Response Trailer                 |
| — Drive Over Berm (2.5' High)   | — Existing Pad                  | — Traffic Flow                           |

