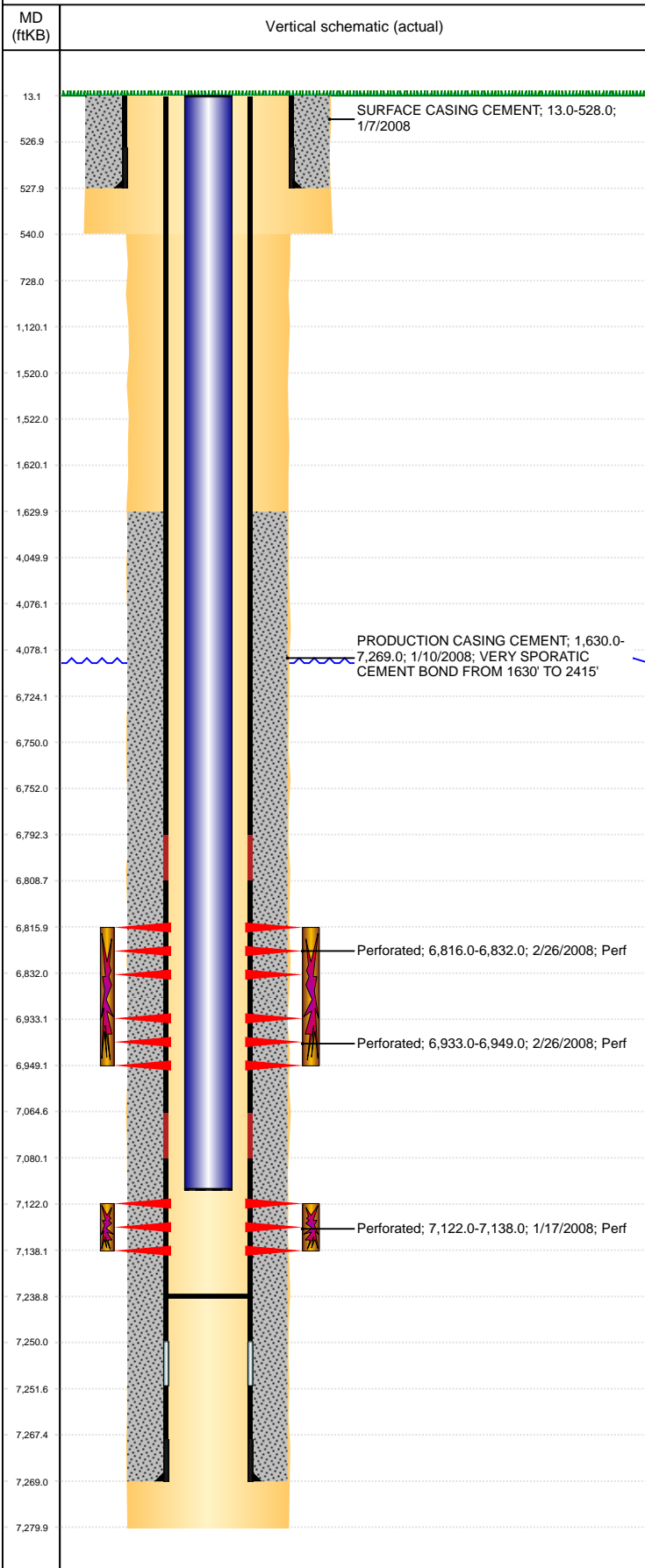


**Well Name: ALEXANDER F34-33**

DEVIATED, ORIGINAL HOLE, 4/14/2020 4:57:50 PM



Well Header									
API 05-123-25299		Business Unit DJ BASIN		District 15		Well Config DEVIATED			
KB - GL / MSL (ft... 13.00		Spud Date 1/6/2008		P & A Date		Well Production Status PR		SoRT No	
Comment STATE HAS BTM HOLE LOCATION@ 1340 S 57 E. FIELD OPS NOTICE-FLOWLINES ABANDONED PER RUL 1103, RCVD 10/21/17.									
Surface Location (Congressional)									
Qtr 3 NE	Qtr 4 SE	Section 33	Twnshp 5	Twnsh... N	Range 65	Rng E/... W	Actual Latitude (°) 40.35385132	Actual Longitude (°) -104.66122185	
Wellbore Sections									
Section Des		Size (in)		Act Top, MD (ftKB)		Act Btm, MD (ftKB)			
SURFACE		12 1/4		13		540			
PRODUCTION		7 7/8		540		7,280			
Casing Strings									
Csg Des		Run Date		OD (in)	Wt/Len (lb/ft)	Grade	Top, MD (ftKB)	MD (ftKB)	
Surface		1/7/2008		8 5/8	24.00	J-55	13.0	528.0	
PRODUCTION		1/10/2008		4 1/2	11.60	M-80	13.0	7,269.0	
Cement									
Des		Start Date		Top (ftKB)		Btm (ftKB)			
SURFACE CASING CEMENT		1/7/2008		13.0		528.0			
PRODUCTION CASING CEMENT		1/10/2008		1,630.0		7,269.0			
Zone Statuses									
Zone Name	Status Date	Status	Fluid Type	Job			Prod Method		
NIOBRARA	3/6/2008	PR	Gas	DRILLING/COMPLETION - ORIGINAL, 1/6/2008...			Flowing		
NIOBRARA	4/29/2008	PR	Gas	DRILLING/COMPLETION - ORIGINAL, 1/6/2008...					
CODELL	3/6/2008	PR	Gas	DRILLING/COMPLETION - ORIGINAL, 1/6/2008...			Flowing		
CODELL	4/29/2008	PR	Gas	DRILLING/COMPLETION - ORIGINAL, 1/6/2008...					
Perforation Data									
Linked Zone		Bnch/Stg	Entered Shot Total	Top (ftKB)	Btm (ftKB)	Date			
NIOBRARA, ORIGINAL HOLE		A	64	6,816.00	6,832.00	2/26/2008			
NIOBRARA, ORIGINAL HOLE		B	64	6,933.00	6,949.00	2/26/2008			
CODELL, ORIGINAL HOLE			64	7,122.00	7,138.00	1/17/2008			
Stimulation Intervals									
Zone		Start Date		Top (ftKB)		Btm (ftKB)			
NIOBRARA, ORIGINAL HOLE		2/26/2008		6,816.0		6,949.0			
CODELL, ORIGINAL HOLE		2/26/2008		7,122.0		7,138.0			
Other In Hole									
Run Date	Des		Make		OD (in)	Top (ftKB)	Btm (ftKB)		
10/24/2019	Plunger Lift				1 7/8				
Logs									
Date		Type				Top, MD (ftKB)	Btm, MD (ftKB)		
1/9/2008		Caliper/Comp.Density/Neutron/GR/SP/ML				2,800.0	7,260.0		
1/9/2008		DIL/GR/SP/Caliper				517.0	7,280.0		
1/16/2008		CBL/CCL/GR				1,490.0	7,232.0		
Plug Back Total Depths									
Date		Type	Com				Depth (ftKB)		
1/16/2008		FILL	DEPTH LOGGER ON CBL				7,239.0		
4/29/2008		FILL	DRILL/CIRC ON REMAINS OF PLUG, CLEANOUT TO 7239'				7,239.0		