

LARSON FV B16X  
Proposed P&A Wellbore

02/25/20

Rangely Weber Sand Unit

Well Details:	F.V. LARSON B 16X
STATE & CO	CO - Rio Blanco
State Location	SESE Section 26, T2N, R102W, 6TH P.M.
NAD83 location:	LAT: 40.11038997 & LONG: 108.8066231
API #	05-103-07024
CHEVNO	DE9863

Casing Details:	Depth
Type	
KB	5365
GL	5355
10.75 in. 40.5 #/ft. J-55	14 - 968,' 650 sxs cmt
7 in. 23 #/ft. J-55	14 - 5336,' sxs cmt
7 in. 23 #/ft. N-80	5336 - 6458,' 810 sxs cmt
4 in. 4 #/ft. 4	4 - 4,' 4 sxs cmt
5 in. 5 #/ft. 5	5 - 5,' 5 sxs cmt
Perfs, Top	6019
Perfs, Btm	6378
PBTD	6445
TD	6458

Formation	Depth
Mancos	0
Niobrara	2258
Frontier	3155
Mowry	3426
Dakota	3527
Morrison	3615
Hydrocarbon Zone	
Curtis	4211
Entrada	4335
Water Makeup & Disposal	
Camel	4491
Navajo	4533
Water Makeup & Disposal	
Chinle	5130
Shinarump	5273
Moenkopi	5360
Hydrocarbon Zone	
Weber	5981
Hydrocarbon Zone	
	6458

KB 5365  
GL 5354.5  
10.75 in. 40.5 #/ft. J-55  
14 - 968,' 650 sxs cmt

7 in. 23 #/ft. J-55  
14 - 5336,' sxs cmt

7 in. 23 #/ft. N-80  
5336 - 6458,' 810 sxs cmt

Perfs, B 6378  
PBTD 6445  
TD 6458

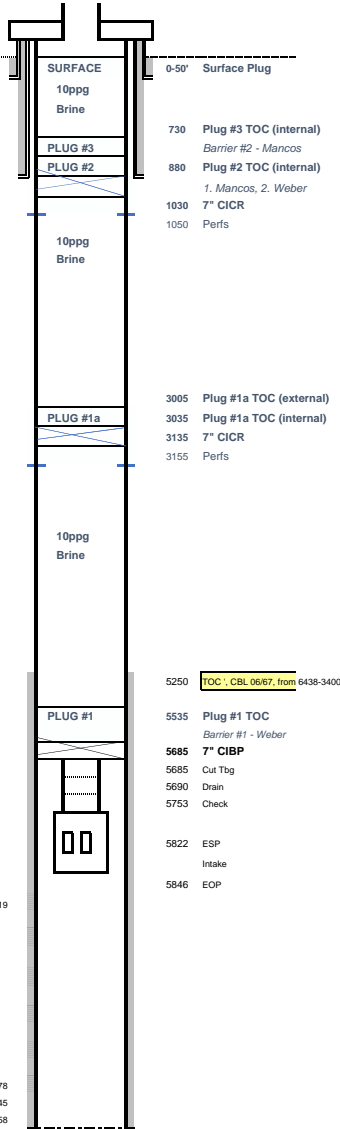
1-

2-

3-

Top	Btm	spl	Ft	pfs	Zn
6019	6024	1	5	5	1 P
6027	6030	1	2	2	1 P
6035	6037	1	12	12	1 P
6051	6063	1	7	7	1 P
6093	6100	1	8	8	1 P
6113	6121	1	15	15	3 P
6162	6177				

Top	Btm
6209	6214
6278	6288
6296	6313
6332	6346
6352	6354
6358	6365
6369	6378



Cement Plug #1		
Top of Cmt Plug	5535	
Bottom of Cmt Plug	5685	
Cmt thickness	150	ft
ID of 7" 23# casing	6.366	in
casing capacity	0.03937	bb/ft
Volume of Cmt needed	5.91	bbl
Conversion bbl to ft3	5.615	ft3/bbl
Cement Yield	1.15	ft3/sk
Cement w/o excess factor	29	sks
Excess per BLM/COGCC	0%	
Sks of Cmt Req'd	29	sks

Cement Plug #1a		
Top of Cmt Plug (casing)	3035	
Top of Cmt Plug (annulus)	3005	
Bottom of Cmt Plug	3155	
Planned Cmt thickness (casing)	120	ft
Planned Cmt thickness (annulus)	150	ft
ID of 7" 23# casing	6.366	in
Annular Capacity of 7" CSG x 8-1/2" OH	0.02259	bb/ft
Annular Capacity of 7" CSG x 10-3/4" CSG	0.05052	bb/ft
7# casing capacity	0.03937	bb/ft
Volume of Cmt needed	8.11	bbl
Conversion bbl to ft3	5.615	ft3/bbl
Cement Yield	1.15	ft3/sk
Cement w/o excess factor	40	sks
Excess per BLM/COGCC	0%	
Sks of Cmt Req'd (above & below CICR)	40	sks
Sks of Cmt Req'd Below CICR	20	sks
Sks of Cmt Req'd Above CICR	19	sks
Actual Cmt thickness (casing)	100	ft
Actual Cmt thickness (annulus)	150	ft

Cement Plug #2		
Top of Cmt Plug (casing)	880	
Top of Cmt Plug (annulus)	0	
Bottom of Cmt Plug	1050	
Planned Cmt thickness (casing)	170	ft
Planned Cmt thickness (annulus)	1050	ft
ID of 7" 23# casing	6.366	in
Annular Capacity of 7" CSG x 8-1/2" OH	0.02259	bb/ft
Annular Capacity of 7" CSG x 10-3/4" CSG	0.05052	bb/ft
7# casing capacity	0.03937	bb/ft
Volume of Cmt needed	54.99	bbl
Conversion bbl to ft3	5.615	ft3/bbl
Cement Yield	1.15	ft3/sk
Cement w/o excess factor	268	sks
Excess per BLM/COGCC	0%	
Sks of Cmt Req'd (above & below CICR)	268	sks
Sks of Cmt Req'd Below CICR	240	sks
Sks of Cmt Req'd Above CICR	29	sks
Actual Cmt thickness (casing)	150	ft
Actual Cmt thickness (annulus)	1050	ft

Cement Plug #3		
Top of Cmt Plug	730	
Bottom of Cmt Plug	880	
Cmt thickness	150	ft
ID of 7" 23# casing	6.366	in
casing capacity	0.03937	bb/ft
Volume of Cmt needed	5.91	bbl
Conversion bbl to ft3	5.615	ft3/bbl
Cement Yield	1.15	ft3/sk
Cement w/o excess factor	29	sks
Excess per BLM/COGCC	0%	
Sks of Cmt Req'd	29	sks

Surface Plug		
Top of Cmt Plug	0	
Bottom of Cmt Plug	50	
Cmt thickness	50	ft
ID of 7" 23# casing	6.366	in
casing capacity	0.03937	bb/ft
Volume of Cmt needed	1.97	bbl
Conversion bbl to ft3	5.615	ft3/bbl
Cement Yield	1.15	ft3/sk
Cement w/o excess factor	10	sks
Excess per BLM/COGCC	0%	
Sks of Cmt Req'd	10	sks